

# DIECAST

## COLLECTOR

Collectors Club www.ccofgb.co.uk • £6.99 • March 2026 • Issue 341

The UK's only diecast magazine!

**PLUS!**  
THE LATEST  
COLLECTING  
NEWS



## Touring

# Dolomite

How everyday saloon cars were transformed into iconic BTCC contenders

### ALSO INSIDE

#### A SPITFIRE WITH 'STARS AND BARS'

Corgi's milestone 1:72-scale Spitfire IXc

#### THE FLYING SQUAD'S FINEST

A closer look at The Sweeney's squad cars



### » DINKY'S ARMoured CLASSIC

Revisiting Dinky's classic Daimler armoured car

### » AMERICA'S CAR AND TOY SHOWS

Fom Carlisle and Hershey to Chicago and Allentown

Price: £6.99



WARNERS  
Display until 03/03/26



# EXCALIBUR AUCTIONS

THE COLLECTABLES AUCTION HOUSE

WE CARE FOR YOUR ITEMS AS MUCH AS YOU DO

## Whats in your loft?



SOLD  
£21,000



SOLD  
£3,000



SOLD  
£600



SOLD  
£600



SOLD  
£3000

SOLD  
£12,000



**Contact us for Vintage Toys, Comics, Movie Memorabilia,  
Trading Cards, Autographs, Retro Gaming and more!**

020 3633 0913

[www.excaliburauctions.com](http://www.excaliburauctions.com)

[DC@excaliburauctions.com](mailto:DC@excaliburauctions.com)

16 Abbots Business Park, Primrose Hill, Kings Langley WD4 8FR



# NOW INCLUDES COLLECTORS GAZETTE!



## 3 issues for only £15.99!

*Save over 23% when you subscribe quarterly!*

### Why subscribe...

- Stay up to date with the latest news, reviews, and price guides
- Get inspired by auctions, toy fair, and event reports
- Features on big-name brands
- Practical tips for buying, restoring, and displaying models
- Now has **10 pages** of price guides from diecast and trains to toys and tinsplate!
- Review fellows collectors' collections and have a chance to get your own featured!



### HOW TO ORDER YOURS...

Simply scan the QR code seen here, visit <https://ccofgb.uk/DiecastCollector> or call our team on **01778 392006** and quote **DCC/SUBS26**.

T&Cs apply, this subscription offer is valid only when paid via direct debit quarterly.



# CONTENTS

FOLLOW US AT  @ccofgb  @CollectorClubGB  CollectorsClubOfGreatBritain  CollectorsClubofGB

## Diecast Collector

### 06 News and events

What is happening in the world of collecting.

### 12 What's new

The latest new models and in-depth reviews.

### 22 Born in Italy

Our series of articles "Racing Colours" has been here since Francisco Mota started as a contributor to this magazine. After dozens of themes covered, here is an unexpected one, born in Italy.

### 26 A Spitfire with 'stars and bars'

Jarrod Cotter highlights the significance of Corgi's first 1:72-scale Spitfire IXc featuring US markings, marking a milestone in the Aviation Archive range.

### 28 The Renovation Game: Pt II

In the second part of this series, Ian McDermott looks at choosing a project to restore.

### 29 Driven to collect

Matt Palmer's meticulously cared-for Lesney collection showcases decades of passion, expert storage, and genuine knowledge.

### 30 The Sweeney's finest

For this month's Little and Large, Steve Coles turns detective and investigates a couple of likely suspects.

### 32 Collecting by numbers

Charting the evolution of the Matchbox Superfast range during the Lesney years.

### 49 Armoured car

DTCA Chairman, Michael Driver, picks another vintage favourite from Dinky.

### 50 On the road

Charles Barnett heads stateside for an autumn tour of America's biggest car and toy shows, from Carlisle and Hershey to Chicago and Allentown, uncovering standout models and memorable finds.

### 54 Price guide

Auction results from around the country.



### 64 eBays

Our guide to what's been selling well on eBay.

### 66 Mattel's Brick Shop Elite Series: Mercedes-Benz 300 SL

Premium vehicle collecting reaches beyond diecast. Keith D'Souza reviews Mattel's Brick Shop Elite Series Mercedes-Benz 300 SL.

### 68 A-Z of diecast

Alwyn Brice finally lays the letter T to rest and looks beyond vehicular transport to the rolling deep, exploring two miniature ship manufacturers, one pre-war and one post-war.

### 70 Barbie behind the wheel: Pt II

Having previously discussed Barbie's first venture into motoring, Hazel Ralston looks at some of the other cars driven by Mattel's famous fashion doll.

### 71 Your collection

A pictorial snapshot of your prized diecast models and collections.

### 72 A tram from Down Under

Mike Pigott looks at an iconic tram from Melbourne.

### 73 Model Shop

We've reviewed your models... now you can buy them directly from us!

## Collectors Gazette

### 35 Mighty Morphin' Zords

George Chrysostomou explores the history of the Power Rangers' mighty mechs!

### 38 BTCC cars vs road cars

Steve Coles explores how everyday saloon cars were transformed into British Touring Car Championship contenders, pairing iconic racers with their road-going counterparts from across the BTCC's most celebrated eras.

### 42 Tampers and grinders

You see them hanging around in sidings. You've no idea what they do. Neither has Mark Nolan, but he's going to find out about the machines they call 'On Track Plant'.

### 44 Comic Con: A toy fair to get dressed up for

This month, Ann Evans and Rob Tysall explore MCM Comic Con, where pop culture collecting meets costumes, characters and celebrities.

### 47 Toy stories

Ed Karswell ponders the world of model collecting.



42



**SUBSCRIBE TO  
DIECAST COLLECTOR  
FOR 12 MONTHS**

Turn to page 3 to find out more!







# NEWS

FOLLOW US AT  @ccofgb  @CollectorClubGB  CollectorsClubOfGreatBritain  CollectorsClubofGB



## HONDA CLASSICS FEATURE IN SPARK'S EAGERLY AWAITED 'F1 CELEBRATION' SET

**SPARK** has just announced another one of its 1:43 two-car sets!

On this occasion the theme is a Honda Formula One 'celebration'.

The first car in the set is Richie Ginther's Honda RA272 from the 1965 American Grand Prix. The American not only scored the first and only Formula One victory of his career at this race, but also the first for Honda (as well as the first for tyre supplier Goodyear).

For this set, Spark has officially stated that the model will be of the car as it was demonstrated by Yuki Tsunoda during this year's Mexican Grand Prix meeting.

Fast forward to early 2025, and at the Japanese Grand Prix Red Bull ran a special one-off livery paying homage to the Honda RA272 to commemorate the 60th anniversary of the achievement.

Fittingly, Max Verstappen took the win, after keeping the faster McLarens of Lando Norris and Oscar Piastri at bay throughout the race. ■



## ICONIC GAVIN & STACEY COACH LISTED FOR £200K

THE original Dave's Coaches from everyone's favourite TV show, Gavin and Stacey, has officially been listed on Autotrader at an asking price of £200,000. It is said that the coach is in brilliant condition with strong mileage and would be great for family use. It is also an artefact to members of the British public who love the TV series.

The listing has already attracted significant attention from fans of the show as well as vehicle enthusiasts and collectors of television memorabilia. As one of the most recognisable props from Gavin and Stacey, the coach represents a tangible piece of modern British television history. Its repeated appearances across the series have made it instantly recognisable to viewers, cementing its status as more than just a mode of transport.

For collectors, the appeal lies not only in its screen history but also in its practicality. Unlike many television props that are purely decorative, this coach remains fully functional and roadworthy, offering a rare blend of nostalgia and usability. Its generous seating capacity and robust build reflect the reliability associated with Mercedes-Benz commercial vehicles.

The coach's appearance in both the very first episode and the 2024 finale gives it a unique bookend status within the series, further enhancing its desirability. Few television artefacts can claim such consistent exposure across an entire run.

As interest in screen-used vehicles continues to grow, particularly those tied to beloved British shows, Dave's Coaches stands out as a standout example. Whether purchased by a dedicated fan, a collector, or a business seeking a truly unique vehicle, this iconic coach is undoubtedly a conversation-starter and a lasting tribute to one of the UK's most cherished TV comedies. ■





## JAPANESE ROBOT CAR SELLS FOR OVER \$233K

**MORPHY'S** November 11-13 Toys & General Collectables Auction launched a sweet honeymoon trip for a Japanese robot car that soared to an astronomical winning bid of \$233,700. Extraordinarily rare and possibly one of only two known that retain their original pictorial boxes, the sensational fantasy toy known to space toy collectors as the "Honeymoon Car" led a stellar 1,375-lot auction lineup that totalled \$1.66 million.

Made by ET (Japan), the silver convertible was complete and all original, with a blue windshield, large grille and tailfins typical of mid-century American cars. Undoubtedly, the colourful lithographed box added a tremendous amount to its desirability factor, perhaps even doubling the value of the elusive postwar gem. The box lid is lavishly illustrated in full colour, with a depiction of the sleek convertible against a setting reminiscent of Chicago's Lake Shore Drive. The lot attracted 37 bids before selling to a US-based buyer for almost three times its high estimate. ■

## ALDI AUSTRALIA SPARKS NEW COLLECTING CRAZE

**ALDI** Australia has sent shoppers into a frenzy after launching their own range of blind boxes. Since the popularity of Labubus soared, many brands have started to release their own collection of blind boxes, even Aldi has now decided to jump on the trend with their own Aldi Mini Collectables.

Each box costs five Australian dollars and customers are queuing outside Aldi early in the morning to make sure they can get their hands on all the designs. There are 30 to collect and the collectables replicate popular Aldi food brands in tiny forms. Each capsule also comes with five mini collectables inside, so the five dollars seems worth it when you are getting more than one surprise.

Fingers crossed that Aldi UK brings these to our stores! ■



## \$5.2M 'ILLUSTRATOR' POKÉMON UP FOR SALE

**LOGAN** Paul, YouTuber and internet personality, has announced that his Pokémon Illustrator card is expected to go up for auction early this year. Paul purchased what is widely regarded as one of the most high-profile collectables in existence back in 2022. He paid a staggering \$5.28 million for the card, a purchase that earned him a Guinness World Record for the most expensive Pokémon trading card ever sold.

The trading card itself has been graded PSA 10 and is one of only 53 examples to receive a perfect grade from PSA. Paul has famously taken to wearing the Pokémon card as part of a custom diamond and crystal necklace, using it as a symbolic statement piece. But where did this legendary card originally come from?

In November 1997, a



contest was announced in the Japanese magazine CoroCoro Comic. The competition invited readers to design and draw their own Pokémon cards and submit them to the magazine. Twenty contestants were awarded an Excellence Prize, with each winner receiving what would later become the now illustrious and incredibly rare Pokémon Illustrator card. ■



# NEWS

FOLLOW US AT  @ccofgb  @CollectorClubGB  CollectorsClubOfGreatBritain  CollectorsClubofGB

**RAILS** – one of Europe’s leading model railway retailers – has just opened a brand-new Station Shop inside Sheffield Railway Station, and the launch weekend has already broken company records.

The grand opening, held on Saturday 29th November, was officially launched by pop icon and model railway enthusiast Jools Holland, alongside industry legend Pete Waterman OBE, who together surprised attendees with a live performance on the station’s public piano. Hundreds of visitors attended throughout the day, including representatives from major model railway manufacturers such as Hornby, Bachmann Europe, Accurascale, Heljan, Revolution Trains and Cavalex.

The opening coincided with Rails’ Black Friday Weekender and became the highest-grossing



## NEW STATION SHOP OPENS IN SHEFFIELD

trading day in the company’s 55-year history. Over 500 customers were transported between the new station shop and the company’s flagship Chesterfield Road store using a vintage Leyland Tiger coach specially operated for the event.

This new retail destination marks a significant expansion for the Sheffield-based family business, which has already created new local jobs this year and is preparing to launch a bespoke customisation service before year-end.

“I’m very pleased to be here after playing last night in Sheffield and whenever I’m here I always go to Rails, as it’s one of the best model shops in the world.” said Jools Holland, “I came to help open this new branch on the station as there’s no better place for it!”

“This is proof that the model railway hobby isn’t dying. You can see how busy this shop is going to be!” added Pete Waterman OBE

Alex Hardcastle, Lead Business Development Manager at East Midlands Railway, said: “It is great to welcome Rails of Sheffield to the station. It will undoubtedly be very popular with our customers, as well as our staff. Sheffield station is a beautiful building, with such history and this new addition will perfectly compliment it. We can’t wait to see what our customers think of it.” ■

## NEXT MONTH APRIL 2026 Issue 342



### Radscale’s VW Beetle Dune: a long-awaited return

We take a look at the Volkswagen Dune Concept 1:18, finally resurrected from the DNA Collectables parts bin by Radscale Models.

### PLUS...

- Models ‘Now and then’
- Auction results
- All the latest news
- Extensive selection of new model releases
- And much more

**ON SALE  
3RD MARCH**

...or download the digital edition 7 days earlier!

*Please note: These planned editorial contents may be subject to change where necessary.*



# AMAZING DIECAST BARGAINS FROM KEITH'S CARS OF DERBY

"FOR LOTS MORE EXCITING MODELS, PLEASE VISIT MY WEBSITE: [WWW.KEITHSCARS.CO.UK](http://WWW.KEITHSCARS.CO.UK)"

## GREAT NEW 1/43 MODELS! ALL POST FREE!!



IXO AMERICA 1978 BUICK GRAND NATIONAL 29.99



IXO 1971 CHEVROLET NOVA SS 29.99



SPARK RESIN 2024 ASTON MARTIN VALOUR 69.99



IXO 2010 VOLVO VNL 730 TR220 38.99



SAVIER SG2 MB38 REFRIGERATED VAN 'CHAMBOURCY' FRANCE 1969



IXO AMERICA 1970 PLYMOUTH ROAD RUNNER SUPERBIRD 29.99



SOLIDO 1989 CITROËN CX GTI TURBO II 27.99



ATLAS MERCEDES-BENZ MB180 BRAZIL 1981 18.99



ALMOST REAL 2015 LAND ROVER DEFENDER 110 ADVENTURE EDITION 91.99



PEGASO 1060 TRUCK 'CAMPOFRIO' 1964



IXO VOLVO 121 AMAZON 29.99



IXO AMERICA 1985 FORD CL9000 38.99



ATLAS FORD ESCORT MEXICO SUSSEX POLICE 16.99



CMR FIAT 131 ABARTH WINNER MONTE CARLO RALLY 1980 WALTER ROHRL 35.99



PEGASO LI-Z 202 LOG TRUCK 'TRANSPORTES DEL MAZO' MADRID 1956

## BIG STUFF!! NEW 1/18 DIECASTS! ALL POST FREE!



SUNSTAR 1979-80 FORD ESCORT MK2 HARRIER DIAMOND WHITE 104.99



SUNSTAR 1979-80 FORD ESCORT MK2 HARRIER STRATO SILVER 104.99



MCG 1994 VAUXHALL CORSA MERIT 72.99



MCG 1995 VAUXHALL CORSA GSI 72.99

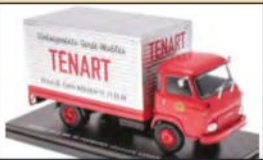
## FANTASTIC 1/43 ATLAS PRICE REDUCTION!! 16.99 EACH OR BUY ANY 6 FOR 74.99 POST FREE!!



RENAULT 2 TONNES COAL MERCHANTS TRUCK FRANCE 1947



RENAULT MASTER 2 'DARTY' ELECTRICAL RETAILER FRANCE 2009



RENAULT SAVIEM SG4 REMOVALS VAN 'TENART' FRANCE 1968



RENAULT ESTAFETTE PICKUP WITH SACK LOAD FRANCE 1966



FIAT 238 VAN 'TALMONE' (CHOCOLATE, SWEETS & BISCUITS) 1970 16.99



MAGIRUS DEUTZ 3506 'EDEKA' SUPERMARKETS GERMANY 1953

## CORGI CLUB ISSUE MODELS IN 1960'S FIRST ISSUE BOXES! POST FREE!!



CORGI MAJOR #1126 COMMER ECURIE ECOSSE RACING CAR TRANSPORTER 99.95



CORGI JAMES BOND ASTON MARTIN DB5 #270 EXCLUSIVE CLUB EDITION WITH GOLD GRILLE 74.99



RENAULT-SAVIEM SG4 D DROPSIDE WITH WOOD LOAD FRANCE 1967



RENAULT 4 VAN 'ASSISTANCE SAVIEM' FRANCE 1967



RENAULT JUVAQUATRE VAN PARIS FIRE BRIGADE 1953



RENAULT 206 E1 MOBILE SHOP FRANCE 1956



OM LEONCINO BOTTLE TRUCK 'BEVI GIOMMI' SOFT DRINKS 1957



RENAULT 2.5 TONNES EDF (ELECTRICITE DE FRANCE) MAINTENANCE TRUCK 1956



RENAULT GOELETTE 1400KG FRENCH POLICE 1962



RENAULT 2 TONNES CANVAS BACK PICKUP FRANCE 1947



RENAULT-SAVIEM SG2 MB35 ROAD MAINTENANCE CREW PICKUP FRANCE 1970



1948-51 MK5 DHC OPALESCENT SILVER BLUE 25.95



RENAULT-SAVIEM SG 2E 4X4 FRENCH MILITARY AMBULANCE 1968



RENAULT ESTAFETTE VAN 'GRAND BAZAR CENTRAL' FRANCE 1961



FIAT 1100 T TRANSPORTER VAN 'ZUEGG' 1961

CONTACT KEITH BY EMAIL: [SONOFCORNERSHOP@BTINTERNET.COM](mailto:SONOFCORNERSHOP@BTINTERNET.COM) CHEQUES/POSTAL ORDERS PAYABLE TO KEITH BRADLEY - SEND YOUR ORDER TO:

**KEITH'S CARS, 25 ALLESTREE LANE, DERBY DE22 2HQ TEL: 07976 917574**



# NEWS

FOLLOW US AT  @ccofgb  @CollectorClubGB  CollectorsClubOfGreatBritain  CollectorsClubofGB

## MATCHBOX PRESENTATION SET SMASHES ESTIMATE

A rare Matchbox presentation gift set proved one of the standout results at Vectis' 9 December auction, racing well beyond expectations to achieve £3,060 against a £700 estimate.

Made in the late 1950s, the set was built around the iconic M-1 Sales & Service Station and included a desirable selection of Regular Wheels models and accessories. Among them were

the Bedford Evening News van, Jaguar 3.4 Litre, Esso petrol pumps and Bedford car transporter, all housed in a white card base with a lift-off lid.

Despite some wear to the outer packaging, the survival of so many original components together clearly struck a chord with bidders, underlining the enduring appeal of scarce early Matchbox presentation sets. ■

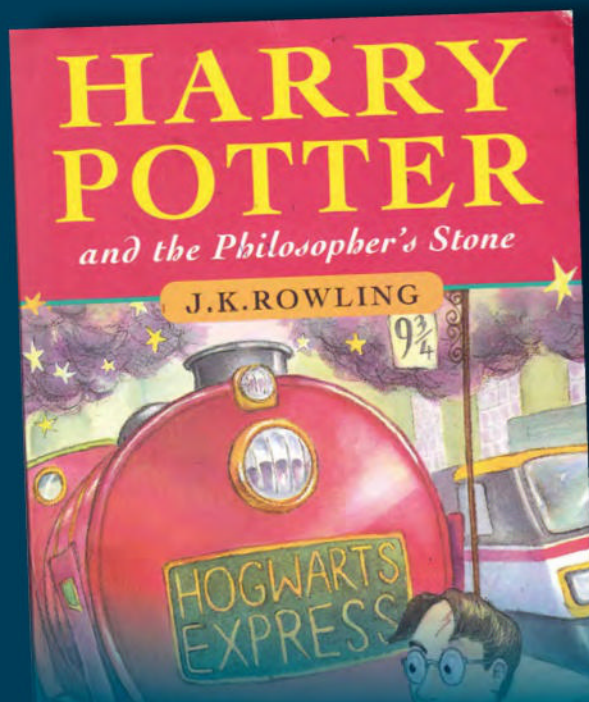


## STURDIToy PRESSED-STEEL VEHICLES FAR EXCEED AUCTION EXPECTATIONS

**CLASSIC** Sturditoy pressed-steel vehicles delivered strong results at Milestone Auctions' New Year's Toy Truck Spectacular, with two large-scale examples leading the way.

A 35-inch Tractor Trailer Oil Tanker, finished in red and graded Excellent with original paint and decals, sold for \$11,700 against a \$6,000–\$8,000 estimate. Close behind was a 30-inch Sturditoy Wrecker, also in outstanding original condition and retaining its original towing hook, which climbed to \$8,700 from a \$2,000–\$3,000 guide. ■





## SIGNED HARRY POTTER BOOK CASTS ITS SPELL

A signed copy of *Harry Potter and the Philosopher's Stone* proved magical at auction, selling at Vectis for £1,715. Bought for a modest sum at a school fête in Muswell Hill in 2002, the paperback was signed by Daniel Radcliffe, Emma Watson and Rupert Grint before the trio became household names. The signatures were obtained after a pupil from the school worked as an extra during filming in 2000, turning an everyday book into a standout result. ■



## HIGH EXPECTATIONS FOR SAS 'TOYS FOR THE COLLECTOR' SALE

**SPECIAL** Auction Services will host its next 'Toys for the Collector' sale on 24 February, featuring a strong mix of vintage toys and models.

Highlights include a rare Lehmann Royal Mail Van, a Denys Fisher Stretch Hulk, and an early G & J Lines wooden Pickfords lorry. The sale also features a superb single-owner Tri-ang Minic collection of more than 100 lots, spanning military vehicles, commercial models and classic cars. The auction will take place in Newbury, with bidding available online, by telephone and in person. ■

## HIGH HOPES FOR ART NOUVEAU POSTCARDS AT WARWICK & WARWICK

A selection of Art Nouveau postcards by celebrated Austrian glamour artist Raphael Kirchner will be offered in Warwick & Warwick's March Toys, Postcards and Cigarette Cards sale.

Known for his distinctive style and ability to capture

elegance and movement, Kirchner's postcards remain highly collectable, with strong demand for named series such as Mikado and Marionettes. The sale, scheduled for 18 March 2026, will include a varied group of examples spanning some of his most recognisable designs. ■







**T**he SD1 was a bit of a looker with the Bache and King “Daytona” inspired styling, which many a British toy brand at the time, such as Dinky, Matchbox and a more famous champion of the silhouette: Corgi, produced in small scale and with many a variation.

The Rover 800 (XX) emerged from a joint-venture agreement between Austin Rover Group/Rover Group (UK) and Honda Motor Co. (Japan) under a programme codenamed “XX” for the Rover side and “HX” for Honda’s equivalent. The idea was to produce an executive-class car to replace the Rover SD1, using shared structure with Honda (which produced the Honda Legend) but differentiating in styling and interior. The car gradually gained classic status, with fewer survivors on the road, with money being spent on securing the higher spec Vitesse and Coupe models. Sadly, many 800s simply didn’t survive due to the dreaded tin worm nibbling away at the bodywork, as well as the scarcity of parts to keep the ones on the road going.

However, unlike its SD1 predecessor, it is quite surprising that Rover’s XX Generation 800 series hasn’t been seen regularly in scale modelling. Many years ago, Corgi produced a fine 1:36 saloon version, but the fastback was somehow overlooked. Matchbox under the Universal years also produced a lovely version which is fondly remembered by many within their 1987 mainline range, cleverly marketed as ‘Sterling’ to cater for the US Market as well as appealing to the RoW.

## New model of the month

**Keith D’Souza** picks a standout new release. This month, he reviews the Rover 827 Vitesse.

### Cult Models

#### Rover 827 Vitesse

**PRICE:** £206.99 **SCALE:** 1:18

**PRODUCT REF:** CML191-3

**cultmodels.com**

Seasoned collectors will know about Cult Models and their niche to delve into the archives of British Motoring history, replicating classics in 1:18 scale. The vacancy of the Rover XX Fastback in scale size is redressed with Rover’s 1988 827 Vitesse press car – E555TON – as one of the examples of Cult’s new mould. Created in resin, the quality is top-notch, and the car is authentically replicated.

The eye for details has not been overlooked – the exterior coachwork has been deftly applied with minutiae such as the rear boot spoiler, factory added sunroof, correct vehicle badging, along with font correct front and rear license plates.

Although a closed model, peering inside showcases the well-appointed interior. The

dashboard is correctly defined, right down to the heater controls. The armchair inviting seats urge you to pilot and drive away. It is also a real pleasure to see the burr walnut veneer inserts within the dash and door cards.

It’s a clean, taut – dare say – handsome looking model, one of the last of the truly big Rover fastbacks finally captured in small scale. Also available as G444XHP in British Racing Green and E764MDO in Targa Red, this is a fine tribute to scaled Rover showpiece, and it will be very interesting if the R17 version gets a run out as a follow on from this model. ■





DIECAST • MODELS • HOBBIES • TOYS

**Clevelands Wholesale Limited**  
Woodcock Hill Industrial Estate  
Harefield Road, Rickmansworth  
Herts WD3 1PQ



**FOLLOW US**  
@ClevelandsTrade



**LIKE US**  
ClevelandsTrade



**SEE LATEST MODELS**  
user/ClevelandsTrade

Tel: +44 (0)1923 711772  
Email: sales@clevelandsdiecast.co.uk  
[www.clevelandsdiecast.co.uk](http://www.clevelandsdiecast.co.uk)

*Wholesale distribution of all major model, hobby and toy brands to the trade*

# TRADE ONLY

## UK DISTRIBUTOR FOR:

# MINI GT™

MGT01179 - 1/64 TOYOTA ALPHARD 40 KUHL BLACK

MGT01180 - 1/64 TOYOTA VELLFIRE 40 KUHL WHITE

MGT01163 - 1/64 NISSAN LB-SUPER  
SILHOUETTE 180SX 2026 TAS

MGT01187 - 1/64 NISSAN SKYLINE GT-R  
TOP SECRET VR32 STEALTH GREY

MGT01186 - 1/64  
CHEVROLET CORVETTE  
Z06 GT3.R ROAD AMERICA  
TEST CAR

MGT01185 - 1/64 NISSAN  
LB-SUPER SILHOUETTE  
S15 SILVIA #555 TEAM  
MINI GT LIBERTY WALK  
2025 FORMULA DRIFT  
HALLOWEEN SPECIAL



ALL ALSO AVAILABLE IN BLISTER PACKAGING



MGT01143 - 1/64 PORSCHE 911 GT3 R #77 AO RACING 2025 IMSA PETIT LE MANS 'SKELETON REXY'  
(UPDATED VERSION WITH RACE-CORRECT WHEELS IN BLACK)



MGT01155 - 1/64 SENNA KART FORMULA K #9 AYRTON SENNA  
DA SILVA 1981 KARTING WORLD CHAMPIONSHIP

# S SENNA



MGT01156 - 1/64 SENNA KART #2 AYRTON SENNA DA SILVA  
1993 MASTERS OF PARIS-BERCY



*Wholesale distribution of all major model, hobby and toy brands to the trade*







**AUTOART**  
Bugatti EB 16.4 Veyron Production  
Car (beige Interior/ Body black/ red)  
SCALE: 1:18 PRICE: £305  
PRODUCT NO: 70909

autoartmodels.com

Considered one of the world's first hypercars, the unprecedented speed and power of the Bugatti EB makes it a standout. Complete with stunning interior and exposible engine.



**AUTOART**  
Black Beauty - Green Hornet  
(Black)  
SCALE: 1:18 PRICE: £180  
PRODUCT NO: 71546

autoartmodels.com

Inspired by the hit TV series, this sleek and heroic vehicle comes equipped with a variety of weapons for an explosive finish. Complete with a Chrysler 440 V-8 engine.



**SPARK**  
Lotus 49 - 1968 Race Of  
Champions - #4 Graham Hill (Red)  
SCALE: 1:43 PRICE: £69.99  
PRODUCT NO: SPK6388

miniatures-minichamps.com

Accompanied by gold leaf decals, this replica of the vehicle driven by Graham Hill famously fell foul of a driveshaft failure at Brands Hatch. Beautifully finished with red and white detailing.



**BBURAGO**  
Lamborghini Temerario 2025 (Blue)  
SCALE: 1:18 PRICE: £52.99  
PRODUCT NO: B1-811052

bburago-shop.com

A thrilling hybrid super vehicle, with four openings, gorgeous bodywork and iconic profile. Lamborghini's first mid-engine car, this nimble, modern icon is a standout.



**BBURAGO**  
Ford Mustang GTA Fastback 1967  
(Black)  
SCALE: 1:18 PRICE: £52.99  
PRODUCT NO: 10-31166

bburago-shop.com

With authentic detailing and a high-quality finish, this stunning Mustang includes a finessed interior and detailed chassis. A strong reminder of the Mustang's key performance upgrades.



**OXFORD DIECAST**  
Ford Escort Mk2 Signal  
(Yellow)  
SCALE: 1:148 PRICE: £7.45  
PRODUCT NO: NES0002

oxforddiecast.co.uk

Vibrant and full of character, the Ford Escort Mk2 is a cult classic and one that enthusiasts still draw great joy from. Complete with a removable stand, perfect for display.

## Want to add one of these great models to your collection?

Check out our model shop online and find your favourite models from the magazine!



Simply scan this QR code with your phone's camera, then tap the link that appears to visit our online shop. Or turn to page 73 of this magazine.

**Happy collecting!**



**OXFORD DIECAST**  
Oxford Diecast Humber Super Snipe  
(Charcoal)  
SCALE: 1:76 PRICE: £9.95  
PRODUCT NO: 76SS007

oxforddiecast.co.uk

Becoming the company's flagship vehicle for a reason, the Humber Super Snipe is known for its luxury interior and boxy exterior. Make the most of its Armstrong Siddeley 4-cylinder engine.





# British Heritage Models

(Tel: 01244 320761)



ESVAL: 1952 BENTLEY R-TYPE COUPE, ABBOTT. SILVER/BLACK. £94.98

THE UK'S NUMBER ONE HAND-BUILT, MODEL CAR SPECIALIST:  
MAJESTY CLASSICS, EXCALIBUR, MATRIX, CULT, ESVAL, GOLDVARG,  
KESS, RIALTO, DERREZ, GLM/STAMP, ILARIO, AUTOCULT, ETC. THE  
BIGGEST SELECTION OF TOP-QUALITY, LIMITED EDITION MODELS.  
PHONE FOR FULL STOCKLIST OR VISIT  
[WWW.BRITISHHERITAGEMODELS.CO.UK](http://WWW.BRITISHHERITAGEMODELS.CO.UK)



ESVAL: 1952 BENTLEY R-TYPE COUPE, ABBOTT, STEEL GREY, REAR SPATS. £94.98



GOLDVARG: 1957 OLDSMOBILE STARFIRE COUPE, WHITE OVER YELLOW. £89.98



MATRIX: 1958-62 FORD ZODIAC OPEN CONVERTIBLE, TWO-TONES: WHITE/TURQUOISE, WHITE/DARK BLUE OR WHITE/YELLOW **PRE-ORDER NOW!**



GOLDVARG: 1959 FORD COUNTRY SQUIRE STATION WAGON, ROSE, OR METALLIC GREEN. £89.98 EACH



GOLDVARG: 1959 FORD COUNTRY SQUIRE STATION WAGON, FRUITLAND FIRE CHIEF. WHITE OVER RED. £89.98



MATRIX: 1968-71 MARCOS 3.0GT COUPE, YELLOW, GREEN, ORANGE. **PRE-ORDER NOW!**



GOLDVARG: 1960 MERCURY PARK LANE, SIGNAL RED OR WHITE/DARK BLUE. £89.98 EACH



GLM/STAMP: 1935 AUBURN SUPERCHARGED PHAETON, YELLOW, OPEN OR CLOSED. £89.98 EACH



MATRIX: 1985-89 MG METRO TURBO, RED, WHITE, BLACK. **PRE-ORDER NOW!**



GLM/STAMP: 1953 CADILLAC ELDORADO, CLOSED CONVERTIBLE, BLACK. £89.98



SCHUCO: DIECAST BMW ISETTA BUBBLE CAR, WHITE/RED, WITH TRAILER AND SKIS. £59.99



GLM/STAMP: 1957 IMPERIAL CROWN, OPEN, SINGLE HEADLIGHTS, BEIGE, OR RED. £89.98 EACH



GLM/STAMP: 1949 BUICK ROADMASTER SEDANETTE, METALLIC GREEN. £89.98



GLM/STAMP: 1969 CHEVROLET CORVETTE STING RAY, OPEN LIGHTS, METALLIC BLUE. £89.98



ALMOST REAL: DIECAST 1970 LAUNCH MODEL RANGE ROVER, DARK GREEN OR WHITE. £79.98 EACH

PRICE INCLUDES  
UK P & P

[www.britishheritagemodels.co.uk](http://www.britishheritagemodels.co.uk)

2 Alyn Road, Chester, CH2 4DY — Email: [bhm-uk@talktalk.net](mailto:bhm-uk@talktalk.net)

PRICE INCLUDES  
UK P & P

## Andrew Clark Models

Est. 1981



## Collectors Toys

Email: [andrew@andrewclarkmodels.com](mailto:andrew@andrewclarkmodels.com)

Or post list to: Andrew Clark Models,  
Unit 1, Toller Court, Shortbank Road,  
Skipton, North Yorkshire. BD23 2HG

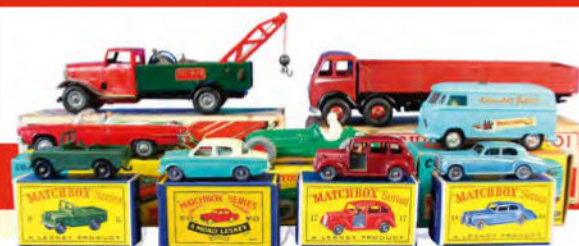
# WANTED NOW!

## All Diecast, Tinplate, Toys and Trains Top prices paid for;

Dinky, Corgi, Matchbox, Spot-On, Tinplate Toy,  
All Trains, Planes, Britains, Scalextric, White Metal  
Models, Minichamps, Quality 1/18 scale models,  
Plastic Kits (Airfix etc...), Modern Collectibles.

- Anything Considered
- Will collect and pay on the day
- Will pay in a method to suit you
- Large collections a speciality, established 1981
- Many auction prices beaten

Call Andrew Today on 07753 804232 (Best Number) or 01756 793354



Always a brilliant selection of Dinky, Corgi,  
Matchbox, Tinplate Toys, White Metal Models etc...  
With new stock everyweek on our superb website!

## Check out [andrewclarkmodels.com](http://andrewclarkmodels.com)

Also listing on ebay every week  
Username: [andrewclarkmodels2](http://andrewclarkmodels2)





## CORGI

James Bond

**Lotus Esprit Submarine  
'The Spy Who Loved Me'**

SCALE: 1:36 PRICE: £39.99

PRODUCT NO: CC04514

Inspired by one of the most memorable vehicles to emerge from Q Branch, this 1:36 scale Lotus Esprit Submarine recreates the famous car-submarine as seen in The Spy Who Loved Me. In the film, the Esprit transforms from road-going sports car into a fully fledged submarine, complete with an arsenal of gadgets including surface-to-air missiles. The model captures the clean lines and unmistakable silhouette of the original Esprit. The result is a distinctive piece that brings together Bond history, automotive design, and model-making, and makes a strong addition to any collection.

corgi.co.uk



**SPARK**  
Mercedes Actros Transporter  
McLaren Formula One Team (2024)

SCALE: 1:43 PRICE: £109.99

PRODUCT NO: SPK8609

sparkmodel.com

As used by McLaren during the 2024 Formula One season, this Mercedes Actros transporter carried the MCL38 cars of Lando Norris and Oscar Piastri across the championship calendar.



**CORGI**  
Wallace & Gromit Austin A35 Van  
"Cheese Please!" (Yellow)

SCALE: 1:43 PRICE: £31.99

PRODUCT NO: CC80506

corgi.co.uk

Corgi teams up with Aardman to bring Wallace & Gromit's trusty Austin A35 to life, finished in bright "Cheese Please!" livery inspired by the duo's much-loved animated adventures.



**OXFORD DIECAST**  
Foden FG 8 Wheel Dray  
Watneys (Green)

SCALE: 1:148 PRICE: £11.95

PRODUCT NO: NFG016

oxforddiecast.co.uk

A 1950s brewery vehicle, the 8 wheeler is decked out in the Watney colour scheme, complete with crated bottles. A representation of the first company to manufacture export keg beer.



**OXFORD DIECAST**  
Bedford CA Ice Cream Van Hockings  
(Cream)

SCALE: 1:148 PRICE: £7.45

PRODUCT NO: NCA030

oxforddiecast.co.uk

Making ice cream since 1936, the company was founded by David Hocking and started out with just a single van - a 1928 Morris Cowley modified for selling the award-winning dessert.



# DOUBLE DENNIS ON THE WAY FROM MODEL BUSES CREATIONS



**M**odel Buses Creations is preparing two new Stagecoach London Selkent Alexander Dennis Enviro400 MMC models, following strong interest in the type and feedback on route selection. One will represent route 261 to Locksbottom, Princess Royal Hospital, while a second will feature a Stagecoach special event destination, produced in a smaller run. Both models are finished to the same standard as previous releases and follow the sell-out success of recent Enviro200 models. ■

## Model Buses Creations

**Vehicle** Alexander Dennis Enviro400 MMC

**Scale** 1:76 **Price** £69.99 each

**Product No** UKBUS 0085 / UKBUS 0086

[www.modelbus.uk/creations](http://www.modelbus.uk/creations)



## NEW ALEXANDER Y-TYPE MODELS FROM EFE ROAD

**E**FE Road expands its 1:76 bus range with the introduction of the Alexander Y-Type, a versatile and long-lived body design that became a familiar sight across the UK from the 1960s through to the early 2000s. The design proved adaptable to multiple chassis, most notably the Leyland Leopard, and evolved over time into the AY and AYS variants. EFE Road's latest releases are based on updated tooling and include refinements such as mirrors, roof vents and correct door arrangements. ■

### EFE Road

**Vehicle** Alexander Y-Type Leyland Leopard

**Scale** 1:76 **Price** £46.95 **Product No** E39201

[www.efezone.co.uk](http://www.efezone.co.uk)



## MAGICAL MYSTERY TOUR BEDFORD VAL FROM CORGI

**R**ecreating the Bedford VAL used in the 1967 Magical Mystery Tour film, this model celebrates one of the most iconic vehicles in music history. Finished in the bold, psychedelic livery made famous by The Beatles, the bus reflects the era's colourful optimism and experimental spirit. The original film was first broadcast in the UK on Boxing Day 1967. Corgi's detailed 1:76 scale replica brings together pop culture, British coach design and diecast collectability, making it an eye-catching centrepiece on any display. ■

### Corgi

**Vehicle** The Beatles Magical Mystery Tour Bus

**Scale** 1:76 **Price** £29.99 **Product No** CC42419

[www.corgi.co.uk](http://www.corgi.co.uk)





**AT COLLECTIONS**  
**Liebherr L546 G8 wheel loader**  
 Scale: 1:32  
 Price: €124.99  
 Product no: 3200200

<https://shop.at-collections.nl/>

Liebherr L546 wheel loader, featuring high levels of detail, particularly with how the inner engine detailing has been implemented. The cabin door opens, and the toothed bucket can be detached.



**AT COLLECTIONS**  
**Atlas 185W wheeled excavator**  
 'Classic Edition'  
 Scale: 1:32 Price: €119.99  
 Product no: 3200153

<https://shop.at-collections.nl/>

Atlas 185W wheeled excavator which has been finished in the classic orange with white cabin. The model features working blade, opening cabin door, fully replicated cab interior.



**AT COLLECTIONS**  
**Claas Torion 1611 wheel loader**  
 Scale: 1:32  
 Price: €124.99  
 Product no: 3200201

<https://shop.at-collections.nl/>

The Claas Torion 1611 has been released, paired with a detachable material handling bucket. An opening cab door reveals the impressive interior, branded Ag tyres add interest.



**AT COLLECTIONS**  
**Volvo EC220E tracked excavator**  
 'Black Edition'  
 Scale: 1:32 Price: €149.99  
 Product no: 3200127

<https://shop.at-collections.nl/>

The Volvo EC220E tracked excavator has been produced in a run of 999 pieces. The model has an opening cab door, modelled interior, linked metal track chains and a fully working quick coupler.



**NZG**  
**Genie GTH-1256 telescopic handler**  
 Scale: 1:32  
 Price: €130.00  
 Product no: 1082

[www.nzg.de](http://www.nzg.de)

GTH-1256 telescopic handler. Working stabilisers at the front, operational steering of both axes and an extending telescopic boom are just some of the highlights on this 1:32nd scale release.



**Kranlab**  
**Gottwald AMK 126-63 mobile crane**  
 'SEU-M-IMO'  
 Scale: 1:50 Price: €369.00  
 Product no: 410294

<https://store.mammoet.com/>

Gottwald AMK126-63 mobile crane from Mammoet. Features include sprung suspension, steering axes, detachable counterweight and operational telescopic boom and winch.



**CONRAD**  
**Kobelco SK39SR-7 tracked excavator**  
 Scale: 1:50 Price: €75.00  
 Product no: 2235/0

[www.kobelcofanshop.com](http://www.kobelcofanshop.com)

The SK39SR-7 is the smallest Kobelco model produced in 1:50th scale. It has a working dozer blade on the undercarriage and fully posable digging equipment which captures that of the original.



**CONRAD**  
**Liebherr LTR1220**  
 telescopic crawler crane 'BMS'  
 Scale: 1:50 Price: €269.00  
 Product no: 2746/07

[www.conrad-modelle.de](http://www.conrad-modelle.de)

Liebherr LTR1220 finished in the colours of BMS. It has detachable track frames and counterweight to allow transport displays, with twin winches and extending telescopic boom.



[www.cheltenhammodelcentre.com](http://www.cheltenhammodelcentre.com)

Latest Releases Latest Releases Latest Releases Latest Releases Latest Releases Latest Releases Latest Releases

**Sun Star**

1:24 Scale Diecast Buses



**H2944** - Routemaster Bus RM16 VLT 16 London Transport Red.....£229.95



**H2943** - Routemaster Bus RM1000 100 BXL London Transport Red.....£229.95

**CORGI**

1:48 Scale Diecast Aircraft



**AA29303** - McDonnell Douglas AV-8B+ Harrier II 165001/01 VMA-214 Black Sheep.....£229.95



**AA28404** - English Electric Lightning F.6 XR726/N RAF No.5 Squadron Binbrook Wing RAF Leconfield Deployment May 1973.....£170.99

**OXFORD**

1:76 Scale Diecast Vehicles



**76CP005** - Ford Capri MK1 Light Blue Auf Wiedersehen Pet.....£9.45



**76MAZ003** - Mazda MX5 (Open) Mariner Blue.....£9.45



**76MET004** - Austin Mini Metro Applejack.....£9.45



**76SFT006** - Standard Flying Twelve Fawn.....£9.45



**76J4007** - Austin-Morris J4 Van Blue.....£9.45

**OXFORD**

1:76 Scale Diecast Vehicles



**76LR3S008** - Land Rover Series III Royal Mail.....£9.45



**76MET003** - Austin Mini Metro British School Of Motoring BSM.....£10.45



**76DXF005** - DAF XF Euro 6 Houghton Parkhouse Livestock Transporter Bert Christie.....£28.80

1:148 Scale Diecast Vehicles



**NAP007** - Austin Princess Black Beatles.....£6.95



**NRTL005** - RTL Bus London Transport.....£9.45

**CORGI**

2026 Announcements Available To Pre Order On Our Website!

**OXFORD**

1:72 Scale Diecast Aircraft



**AC127** - Curtiss P40F Warhawk X43 Miss Memphis North Africa 1943.....£18.00



**AC128** - De Havilland Mosquito Mk.II NF P.G.Wykeham-Barnes No.23 Squadron RAF Malta.....£18.90

1:120 Scale Diecast Vehicles



**120MN003** - Mini Almond Green/Old English White.....£7.45



**120RM002** - Routemaster Bus Shillibeer.....£9.45



**120TEA002** - Ferguson TEA Tractor Red.....£7.45

Cheltenham Model Centre  
39 High Street  
Cheltenham  
GL50 1DX

Email: [info@cheltenhammodelcentre.com](mailto:info@cheltenhammodelcentre.com)  
Telephone: 01242 523117

P&P £4.00 per order.

All items in stock at time of going to press. Prices and delivery dates are subject to change without notice.

**DSC Showcases**

The finest Glass Showcases and Wall Display Cabinets for Collectors & Modellers

**A TOUCH OF GLASS!**  
**BIG OR SMALL, WE MAKE THEM ALL!**  
**WALL CASES & SHOW CASES**



**'Merrill Ville'**  
**Enborne Row**  
**Wash Water**  
**Newbury**  
**RG20 0LX**

**01635 34656**

[admin@dscshowcases.co.uk](mailto:admin@dscshowcases.co.uk) [www.dscshowcases.co.uk](http://www.dscshowcases.co.uk)





## USK SCALEMODELS

### McHale Fusion 4 Plus Integrated Baler Wrapper

**PRICE:** £87.00 **SCALE:** 1:32 **PRODUCT NO:** 31022

USK Scalemodels' new Fusion4 Plus model is the latest baler it has made for McHale. Like the other balers, it's only available from McHale or its dealer network. It's beautifully engineered with many of the working features found on the real baler.

The drawbar is provided with a folding stand, yellow PTO shaft, and hydraulic pipes. While the pickup has freely rotating height wheels, tines and rotary crop guard. Both the pickup and crop guard float freely. Behind the pickup, there's the lateral feed augers and chopping rotor detail. Over the pickup on the platform, there

are realistic steps and handrails. Also detailed are red and white warning boards and film loading and storage mechanism.

There are safety and instructive decals on the side panels and all four panels are hinged. Under the front panels are five rolls of white wrap and drive detail. While behind the rear panels there's the wrapping mechanism detail. Opening the bale chamber door reveals, they do not rotate, 18 rollers. As it opens it lifts the frame holding the bottom five rollers, ejecting the bale onto the wrapping platform. Here a spring-loaded roller ejects the finished bale onto the ground.

The baler is supplied with an unwrapped, part wrapped and fully wrapped 37 mm dia x 35 mm wide round bale.

[www.mchale-shop.com](http://www.mchale-shop.com)



## ROS

### Ropa Keiler II RK22 Trailed Potato Harvester

**PRICE:** £160.00 **SCALE:** 1:32 **PRODUCT NO:** 013017200

Available from Ropa and its dealer network only, production for ROS's newly tooled, individually numbered, first edition harvester has been limited to 1350 models. It's a largely metal model, with good levels of detailing of Ropa's four pintle belted Keiler II trailed harvester.

The drawbar swings between transport to working positions and has a movable stand, hydraulic pipework and pto shaft. Two rams support the lifting unit, which has freely rotating diablo rollers, four lifting shares and four side discs and lowers. From the lifting unit the cleaning and separation conveyors are accurately detailed. The

four pintle belts, finger comb, leaf chain, deflector rollers and dirt discharge conveyor are all provided. On the platform the picking and trash conveyors have flexible, realistic looking belts. There's flexible black belting in the storage bunker and rams to lower the two-stage unloading conveyor.

Under the bunker there's a cabinet, with opening door, containing axial-piston pumps, controls and cooling radiator. Correctly sized ladders and gates are provided on the set width sorting platforms.

Neither the wheel track nor harvester inclination are adjustable and the wheels have Trellborg 850/50R30.5 branded tyres but do not steer. There's a beacon and a board with warning boards and plastic taillights detailed at the harvester rear.

[www.ropa-maschinenbau.de/en/shop/](http://www.ropa-maschinenbau.de/en/shop/)



# WANTED!

Andrew of Miniature Autoworld is looking for **all makes and scales of:**

- Modern & Vintage Diecast Models
    - White Metal & Resin Models
  - White Metal, Resin & Plastic Kits
  - Modern & Vintage Toy Soldiers
- Large Collections • Small Collections  
• Surplus Stock

**Selling couldn't be easier!**

We will travel **anywhere** in the UK & Ireland!

We can make payment by your preferred method!

Simply phone Andrew direct, anytime:  
01271 864061 or 07515 743152

Visit the website:

**WWW.MINIATURE-AUTOWORLD.CO.UK**

Email us:

miniature-autoworld@outlook.com

Or post details to:

Andrew Sutton, Miniature Autoworld,  
Green Ridge, West Down, Ilfracombe,  
Devon, EX34 8NF

# R. M. Toys Ltd



**Russell Martin - Over 30 years experience in the model trade!**

WANTED: Diecast, White Metal, Buses, Airplanes, 1/18th Scale, 1/43rd Scale, Formula 1, Modern Rally, Historic Rally  
**ANYTHING CONSIDERED COLLECTION AVAILABLE**



For more information please contact:-

Tel: 023 9226 2446 Mobile: 07957 823507

Email: russell@rmtoys.co.uk

Or post list to:-

RM Toys Ltd, 31 Aston Road, Waterlooville, Hampshire, PO7 7XQ

## THE TOY COLLECTORS PRICE GUIDE 2026 IS NOW HERE!

PRICE GUIDE: WE HELP PUT A VALUE ON YOUR COLLECTION!

**TOY COLLECTORS PRICE GUIDE 2026**  
YOUR ESSENTIAL FIELD GUIDE TO CLASSIC TOY COLLECTIBLES



**PUT AN ESTIMATE ON YOUR VINTAGE TOYS WITH THE TOY COLLECTORS PRICE GUIDE**

Nearly 100 pages of auction prices for diecast, model railways, tinplate, toy soldiers, and memorabilia. Don't overpay, undersell or miss a deal!

Order yours today!

By calling **01778 392480**

or visit **https://ccofgb.uk/26tcpg** by scanning the QR code



**SPA CROFT MODELS**  
Trusted for over 40 years  
Unrivalled Customer Service & Delivery.  
98, High Street, Tibshelf, Derby. DE55 5NU  
Tel: 01773 872780 Email: spacroft@aol.com

Please contact me to reserve forthcoming models.  
No payment needed until available  
All models are checked before I post them to you.  
Models are securely packed in approved postal boxes.

\*Prices marked with an asterisk could be subject to exchange rate fluctuations

<p><b>£95*</b> Coming soon Limited to 100</p>	<p><b>£95*</b> Coming soon Limited to 100</p>	<p><b>£95*</b> Coming soon Limited to 100</p>
<p>MATRIX MODELS 1985-1989 MG Metro Turbo: Red, White or Black. Due 1st Quarter 2026. Available to pre-order.</p>		
<p><b>£99</b> Limited to 100</p>	<p><b>£99</b> Limited to 100</p>	<p><b>£99</b> Limited to 100</p>
<p>MATRIX MODELS 2003-2005 MG ZT-T 260 Estate: Blue, Silver or Green. Now Available.</p>		
<p><b>£95</b> 100 only Blue Closed</p>	<p><b>£95</b> 100 only Turquoise</p>	<p><b>£95</b> 100 only Red</p>
<p>MATRIX MODELS 1995-6 Jaguar XJS 4.0 Celebration Convertible. Now Available.</p>		
<p><b>£95*</b> Limited to 100</p>	<p><b>£95*</b> Limited to 100</p>	<p><b>£95*</b> Limited to 100</p>
<p>MATRIX MODELS 1958-1962 Ford Zephyr Zodiac Mk.II Convertible. Available 2nd Quarter 2026. Available to pre-order.</p>		
<p><b>£95*</b> Limited to 100</p>	<p><b>£95*</b> Limited to 100</p>	<p><b>£95*</b> Limited to 100</p>
<p>MATRIX MODELS 1929-1932 MG M Type Midget. Red, Green or Blue. Available 1st Quarter 2026. Available to pre-order.</p>		
<p><b>£95*</b> Limited to 100</p>	<p><b>£95*</b> Limited to 100</p>	<p><b>£95*</b> Limited to 100</p>
<p>1968-1971 Marcos GT 3 Litre. Available 2nd Quarter 2026. Available to Pre-Order</p>		
<p><b>MANY OTHER MODELS AVAILABLE. GIVE ME A CALL. 01773 872780</b> <b>ALL MODELS ARE SENT ROYAL MAIL 1st CLASS TRACKED 24 (FREE UK)</b> Models ordered before 2pm (Mon-Fri) are normally delivered the next day.</p>		





To be honest, I'd have to go looking into our archives if I want to know how many articles we've published under the series "Racing Colours". The idea started with one of those "what if?" moments and could not be simpler than this: find as many 1:43 scale models as you can that raced with the same main sponsor and, therefore, with the same racing colours.

We've been through all the major Motorsport sponsors, like Marlboro, Rothmans, Martini, Red Bull and many others. To the point where we thought we had reached the end of the golden trail. At least in terms of scale replicas available for any collector to buy, not so much in terms of the real cars and sponsors. "Andrews Heat for Hire" is still one of those that we get many reader requests to write about. However, until now, I have only found less than a handful of 1:43 scale models, not enough to run an article, I'm afraid.

The sponsor of this new article came as quite a surprise. Not because it is an obscure subject; all of us, from a certain age, can remember cars racing in these colours. The surprise was to find many model makers that have launched replicas of such racing cars. Momo's striking

# Born in Italy

Our series of articles "Racing Colours" has been here since **Francisco Mota** started as a contributor to this magazine. After dozens of themes covered, here is an unexpected one, born in Italy.

colours make for an eye-catcher livery, and that's always a good reason for a car to be modelled. Bright red and yellow are amongst the best to this effect; even the Momo logo looks great, if a little vintage by now.

For those of you that do not know what Momo is about (I'm sure most know the answer...) it is a manufacturer of multi-brands after sales accessories and parts for cars. Simple things like alloy wheels, steering wheels, racing seats, racing gear sticks, exhaust systems and much more, all designed to stand out as

performance or racing parts. They also sell certified racing suits, gloves and shoes. It's one of those brands that works mainly for a niche market of amateur racing drivers or enthusiasts that want to personalise their road car. In the same way as Sparco and others.

Italian racing enthusiast and driver Gianpiero Moretti founded Momo in 1964, and the name comes from the first two letters of Moretti and Monza, the famous racing track near Milan, Italy. The first part, made by Momo/Moretti, was a racing steering wheel that Gianpiero used



**ABOVE.** From left to right, we have three very different models sponsored by MOMO. The first is a 1980 Porsche 935 Joest raced in the Daytona 24h (K-Model), followed by a 1984 Renault 5 Turbo Cup and the 1983 Porsche 936/81 Joest as raced in Riverside, the last two models are by Spark.

in his own racing car. It had a thicker grip than the norm in the mid-1960s, and the other drivers started to see the advantages of that idea. Next step, they were asking Moretti to sell them copies of this fat steering wheel, and that's how Momo was born.

The new steering wheels quickly started gaining fame throughout the racing community and even with Formula 1 stars. John Surtees requested a Momo steering for his single-seater Ferrari and, late in the year, he won a F1 Grand Prix with his Ferrari equipped with the Momo steering. It was the first big win for the Italian company.

#### A GROWING BUSINESS

The business was so good in 1969 that a new factory was opened in Tregnago, Verona. However, the increase in road safety rules, first in the US and then around the world, almost killed Momo. When the airbag started to be obligatory in all road cars, Momo didn't have the technology to do this, and Moretti sold the company in 1996 to Breed Technologies.

Ironically, this was an airbag manufacturer. Years later, private equity firm Carlyle Group bought Breed and merged it with another automotive company they owned, to form Key Safety Systems in 2003.

Key sold the Momo brand to an Italian private equity group in 2006, but retained almost all of Momo's technologies and plants. In 2011, Momo was again sold to Henrique Cisneros, a Venezuelan American businessman and racecar driver, who integrated Momo into his Cisneros Group.

The year after, Momo launched a series of road tyres in Europe, and those reached the US in 2017. Today, you can still find the brand Momo in products like steering wheels (now fitted with airbags) and racing helmets, as well as racing equipment. They have also produced a steering wheel for Logitech as a video game controller. Watches, eyewear, fragrances, clothing and accessories are still on sale, made by Momo Design.

#### SELF-SPONSORING

Motorsport involvement started in the early seventies with Moretti self-sponsoring his racing activities, both in the US and Europe. He liked driving GT cars and prototypes, and no money was saved to get the wheel (presumably a Momo one) of some of the best. The earliest car we found modelled is a Porsche 935 with number 30 that he drove in a race at Portland in 1978. The model is a release by Spark and painted half-red, half-yellow. It features all the details typical of this iconic car, like wide wheels and heavily enlarged wheel arches, a white safety net on the driver's window and mirrors in different positions. It has a flat nose and a long tail with a rear wing. A lovely scale model with Momo as the main sponsor.

Next to this, we have a different livery, this one with red as a base colour and a pair of yellow stripes on each side of the

**'The new steering wheels quickly started gaining fame throughout the racing community. John Surtees requested Momo steering for his single-seater Ferrari and, late in the year, he won a F1 Grand Prix with his Ferrari equipped with Momo steering.'**





car, the concept Momo would explore in the following decades. Door number is 592, and this is a different kind of Porsche 935, higher to the ground and with much shorter side skirts. That's because Moretti drove this car in the 1979 Giro d'Italia, an event that had races on track and tarmac rally stages. That's why four extra spotlights are fitted to the front hood. The model comes with the racetrack front bumper in red, but Spark supplies the shorter, white bumper used in rally stages. Moretti won the event outright.

**TOP** Racing or rallying, Moretti liked both disciplines and drove a Porsche 935 in both.

**ABOVE** Two versions of the Porsche 935 Joest, by Spark, on the left and K-Model, on the right.



## MORE PORSCHE 935S

For the next pair of 1:43 scale models, we have two different versions of the Porsche 935 Joest that Moretti drove in the 1980 season. They are both red with yellow arrows, the final scheme for the brand. There are some differences between those two, both featuring the number 30 on the door and front hood.

The model with golden wheels was raced in the Mid-Ohio race and features the different shape Joest gave to the 935, after the Porsche factory stopped the development. A good hint is the rear wing with straight side supports. The other car has some different stickers and shorter yellow arrows on the front, as seen in the Daytona 24-hour race. It is a K-Model release and seems slightly out

of scale, bigger than the Spark model, but full of small details outside and inside.

For the third pair of Momo-sponsored models, we have car number 30, Troféu's interpretation that looks a little too narrow at the front and correct at the rear. It also depicts the car raced at the 1980 Daytona 24 hours in the start of race configuration, still with the headlights covered with grey tape. A nice touch. Car with number 70 is a Look Smart release for the 1981 Porsche 935 Joest. The car was seriously widened, front and rear, has a different shaped front bumper, a longer tail and a new kind of adjustable rear wing painted grey. Some of the stickers are new, like the Penthouse magazine sponsoring close to the Momo word and

the sunshade on top of the windshield sponsored by Fila. This model has the same quality levels as the Spark products; in fact, they are two brands of the same company, Minimax.

For the last pair of scale models sponsored by Momo we found two very interesting subjects. The first one is yet another Porsche 935 Joest, only this time it is the famous 935/81, also known as the Moby Dick. Not one of the originals made by Porsche, but a car fabricated by Joest, according to Porsche's blueprints.

## RED AND BLUE

And it is exactly the blue colour that makes this Momo car so different from the others. The colour suits the needs of





**TOP** The Porsche 935 in two different configurations, but the same livery.

**ABOVE** From the Moby Dick 935 to the Renault 5 Turbo, Momo sponsored very different machines.



1. NACA air scoops on the enlarged wheel arches are a 935 trademark, directing fresh air into the engine compartment or tyres.
2. Joest used different rear wings on its Porsche 935 J, depending on the track.
3. The unpainted rear wing is fitted to the body via several adjustable rods, perfectly modelled.
4. Long tail and highest wing have a dominant aerodynamic effect in this 935/81 by Joest.

the new co-sponsor Andial and paints the lower half of the car. Obviously, the 935/81 had a unique shape, starting with a long tail with a much higher wing, narrow supports and adjustment cables. The front end is much lower and sloped; the headlights are covered with Bilstein and Goodyear stickers. Wollek/De Narvaez drove the car in the endurance US IMSA/GT series.

The last car for Part 1 of this Racing Colours is the smallest and very unexpected Renault 5 Turbo. It is true this homologation special had mid-engine and rear-wheel drive and was the star of the R5 Turbo Eurocup, a single maker competition raced in several tracks around the continent. This is the 1984 car as

driven by Italian star Maximo Sigala. The livery is a work of art for a scale model, with very narrow stripes of yellow going around the body and following some of the most difficult lines.

The car features very realistic wheel rims, a large tail pipe and rear hatch leather latches. The interior has a single racing seat, complete roll-bar and simple instrument panel; the driver had to give

his full attention to what was going on the track, with several identical cars disputing every place.

Moretti did not start with the Porsche 935 “monster” car. Before that, he had several small Italian cars, but none was Momo-sponsored. Except for a Porsche 934 with a unique Momo livery that looks gorgeous. Old resin and metal kit producer Maydero launched this as a kit or professionally built version. I saw one of the latter on an eBay auction, but I was too slow to get it. Of course, I could not find another. Regret is the worst part of collecting...

In the next issue we'll look at Momo from the 1980s until today, with a bunch of more diversified models. Do not miss the issue. ■

**‘It is the blue colour that makes this Momo car so different from the others. The colour suits the needs of the new co-sponsor Andial and paints the lower half of the car. Obviously, the 935/81 had a unique shape, starting with a long tail with a much higher wing.’**



**T**he Supermarine Spitfire, in various scales, has been part of the Aviation Archive range since its earliest days. However, few have worn the markings of the United States Army Air Force. Just released by Corgi is the 1:72 scale Spitfire Mk.IXc MH656 WZ-RR *Porky II*, as flown by Lt Robert Connor of the 309th Fighter Squadron, 31st Fighter Group in the Mediterranean Theatre circa 1943 (AA29104). This model is the first release in this tooling to wear USAAF markings.

#### HISTORY

The 309th Fighter Squadron was activated as part of the 31st Fighter Group at Baer Field, Fort Wayne, Indiana, on January 30, 1942. On February 6, the unit moved to New Orleans Army Air Field and was equipped with Curtiss P-40B Tomahawks for a short while before switching to P-39s. They shipped for England in early June and established themselves at High Ercall on June 11, 1942. The squadron was equipped with the Spitfire Vb and assigned the squadron code WZ.

When the 309th Fighter Squadron moved to support Allied operations in North Africa, and subsequently on to Sicily and Italy, they took their Spitfire Mk.V fighters with them. However, they received the upgraded Mk.IX variant of the Spitfire from April 1943 onwards. These more powerful aircraft were used to provide fighter cover for Allied bombers across the Mediterranean Theatre of Operations.

One of these, MH656, was the mount of Lt Robert Connor, who playfully embraced the less-than-flattering nickname his fellow pilots gave him by having distinctive artwork painted on the starboard side of his Spitfire. It featured the cartoon character Porky Pig and his Looney Tunes catchphrase 'That's All Folks' in what

resembled a slice of white bread. The aircraft was named *Porky II* because the pilot had named an earlier Spitfire V *Porky*, and he had to distinguish between the two.

The 309th kept their Spitfire Mk.IX fighters until they were exchanged for North American P-51B Mustangs in March 1944. The Spitfire IX had served the unit well.

#### THE CORGI MODEL

This model looks particularly attractive and interesting, wearing its USAAF markings. It wears dark green and grey camouflage on its topsides and light grey undersides. Added to this are the US 'stars and bars' denoting a USAAF unit was flying the aircraft.

The *Porky II* artwork is neatly applied and easily readable. Additionally, on its forward underside, in a yellow painted area, is the secondary name *Pud*.

The highly detailed model comes with a removable undercarriage and parts to represent it with undercarriage up or down. It has a rotating propeller, a pilot figure, and a sturdy stand for display purposes.

The 1:72 scale Spitfire has a wingspan of 15.4cm, a length of 13.3cm and a height of 3.8cm.

It has a limited-edition run of 1,100 units and a retail price of £59.99. At the time of writing, it was still available direct from Corgi but can also be bought from your favourite diecast dealers. ■

# A Spitfire with stars and bars

**Jarrold Cotter** highlights the significance of Corgi's first 1:72-scale Spitfire IXc featuring US markings, marking a milestone in the Aviation Archive range.



The Corgi Spitfire IX model, which represents MH656 WZ-RR.



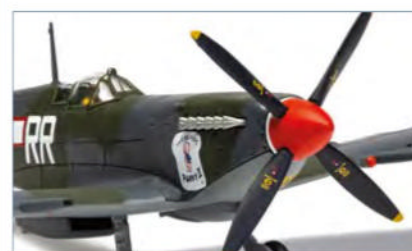
On the starboard side of the Spitfire in the Porky II artwork.



In this head-on view of the Spitfire, note the secondary name Pud in a yellow panel.



Note that the fuselage side US markings are outlined in red.



A close-up of the Porky II nose-art and red-painted propeller spinner.



As you'd expect, the box artwork is superb.



**ABOVE** Supermarine Spitfire Mk IXc in U.S. Army Air Forces service, 1943–44. Although best known as an RAF thoroughbred, a small number of Mk IXc Spitfires were operated by the USAAF for tactical evaluation, training, and comparative trials alongside American fighters such as the P-47 and P-51. Wearing U.S. markings but retaining their British character, these aircraft gave American pilots valuable insights into the Spitfire's handling, high-altitude performance, and combat strengths.



So, you've kitted out your workspace, and all you need now is something to work on. Much of what you take on will depend on your level of skill and personal preferences. There are collectors who deliberately seek out the worst basket cases they can find purely for the challenge they present. Others want models that have been well played with, but not to the point of contempt. Then, of course, there is the question of spare parts and where to get them.

When it comes to spares, most of the big UK diecast manufacturers are pretty well served. However, don't let that put you off foreign makers. American models are incredibly well catered for when it comes to spares. The huge demographic of homegrown collectors make it cost effective to reproduce even the most obscure parts.

Tinplate and pressed steel, always an American favourite, are very well catered for. Being overseas, suppliers may take some tracking down and don't forget to watch out for those postal charges. Similarly, the French and German home markets also have great spares suppliers. I have sourced from both with pleasing results on both occasions.

It might be lesser known UK makers that present a problem. Taylor and Barrett, Britain's and Johillco aren't too bad, but try finding wheels for your Jolly Roger saloon or parts for Scamold racing cars?

Aside from buying new parts, don't overlook buying scrap. The scrap or junk boxes at Toy fairs always contain a good selection of models deemed past saving and are usually priced accordingly. These can be broken down to yield useful parts such as wheels, suspension and seating. It's always preferable to be able to use original parts rather than copies. Also, you'll be surprised how some otherwise nice original models turn up often missing just one small piece. You never know, it might be in your spares box?

## SWOTTING UP

Whether you're a novice or not, you will certainly need good reference material to restore models to their factory spec. Fortunately, there are many excellent books available to aid with authenticity when restoring old models. For those on the internet, there are numerous auction

**TOP** A typical Toy fair selection of well-loved diecast, all ripe for restoration.



# The Renovation Game: Part Two

In the second part of this series, Ian McDermott looks at choosing a project to restore.

houses, Facebook groups, etc, to help with info and support. One thing to note, match your paint first before stripping a model down. I've lost count of how many times I've had to guess a paint match, as, in my enthusiasm, I've stripped away all traces of the original paint!

## CHOICES, CHOICES

Spares and paint are not cheap, but as restorers of full-sized vehicles will attest, that's not why they do it! There's an awful lot of satisfaction to be had from researching, crafting and ultimately having something you've restored sitting in the display cabinet.

So, what to choose? Well, I've plumped for one of the classic Dinky 50's Grand Prix racers, the Alfa Romeo, number 232. Why one of these, you may well ask? Well, for a start, it's in terrible condition and needs, well, just about everything!

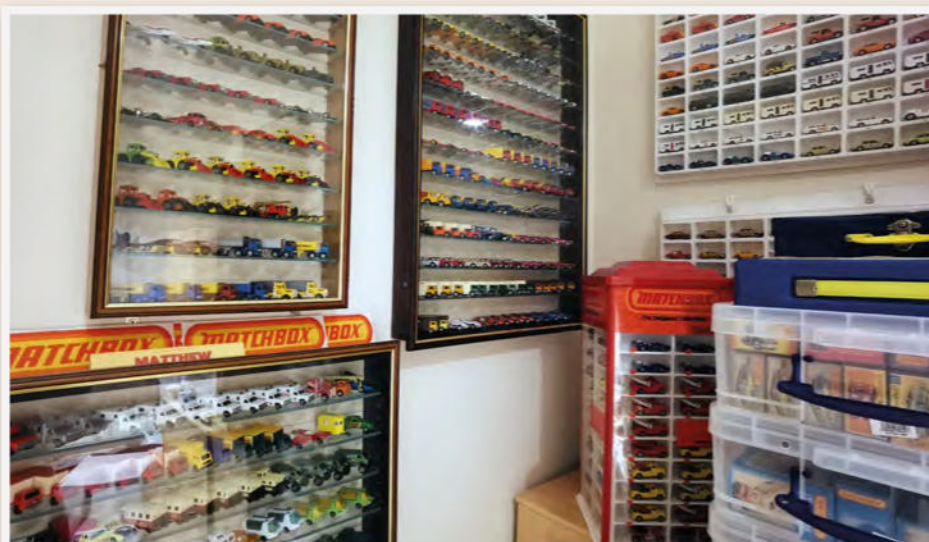
Next month, join me in the strip down to see just how bad or good it is. ■



**ABOVE** Virtually every spare is available for this 1930's Chrysler by US firm, Kingsbury.



**ABOVE** The classic Dinky Alfa Romeo racing car, indeed a prime candidate for restoration.



# Driven to collect

**Matt Palmer's** meticulously cared-for Lesney collection showcases decades of passion, expert storage, and genuine knowledge, with a rare SuperKings K-17 Ford D Series still awaiting discovery.

## WHAT GOT YOU INTO SCALE MODEL COLLECTING?

My interest was sparked as a young boy. My parents helped me learn different colours by looking at cars on the road, something I always enjoyed. Naturally, I had to have them in toy form so I could recreate the traffic I saw, and that started my obsession with toy cars. The first I remember receiving was the Matchbox Lesney MB74 Mercury Cougar Villager, bought by my Mum. With regret, I no longer have the original, but it inspired me to find a Mint version later in life, which eventually led me to collect several different variations. Over the years, this early fascination grew into a full-scale passion for scale models.

## WHAT DO YOU COLLECT?

I'm not sure what counts as a "big collection," but I estimate around 3,500 pieces, possibly

more. My main focus is the Matchbox Lesney Superfast range, roughly 1:64 scale, along with the larger SuperKings models, which always impress on display. I also have shop displays, sets, and carry cases from the Matchbox heyday, plus 1970s and 80s Hot Wheels and Majorette diecast I've picked up over time. These models offer a near-endless range of variations, which makes collecting very rewarding. It's nice to step away from a hectic world for a couple of hours and lose yourself admiring these miniature wonders, appreciating the detail, quality, and the history they represent within the hobby.

## WHAT ARE YOUR HINTS AND TIPS ABOUT COLLECTING?

Over the years, I've developed reliable storage habits that serve my collection well. Stackable lock-lid containers work for most models,

while smaller Matchbox boxes benefit from clear plastic protectors. These are made for Tomica but fit older Matchboxes perfectly, keeping dirt out and making display or storage easier. SuperKings are stored in a single layer per container, never stacked, as their weight can cause crushing. Everything stays away from sunlight and heat, a collector's worst enemies. Fakes are increasingly common, so I rely on trusted guides to identify variations and avoid mistakes. Charlie Mack's older books have been invaluable. Experience teaches which sellers to trust, and local toy fairs can still yield a gem or two.

## WHAT IS THE HOLY GRAIL THAT'S MISSING FROM YOUR COLLECTION?

The ultimate find for me is the Matchbox SuperKings K-17 Ford D Series, MIB. The K-17 is the SuperKing (Superfast) version produced in 1971/72, not the earlier KingSize (regular wheel) version, which is much easier to find. After more than 20 years of searching through sales, auctions, toy fairs, and online listings, I've never located one. I'll need to pay above the usual to acquire it. As an early 70s SuperKing with a production run of only around two years, it rarely appears for sale and remains exceptionally difficult to obtain. Securing one would complete a long-term collecting goal and mark a significant milestone in my hobby, making it the Holy Grail of my collection. ■

## What we reckon

Matt's Lesney collection certainly ranks among the finest we have seen. His deliberate approach to storage and care ensures that both models and packaging remain in excellent condition. His use of clear protective boxes for the Lesney Picture boxes is a simple but highly effective method. Matt also makes excellent use of reference books to confirm that the models he seeks are legitimate, in a hobby where counterfeit models sadly remain a constant challenge. We wait with anticipation to see whether he can finally secure the elusive SuperKings K-17 Ford D Series, a prize that would crown an already remarkable collection **Keith D'Souza**



**FAR LEFT** My favourite toy car of all time. Matchbox Superfast No. 74 Mercury Cougar Villager. It was the first memory of getting a toy car and I love American Station Wagons.

**LEFT** I have a vague memory of this being a hand me down and I loved how it could carry five cars. Of course, my original is lost in the mists of time.





**ABOVE** The front of the Richmond is either a bit too tall or not wide enough. The Oxford's proportions look right.

# The Sweeney's finest

**A**sk anyone over a certain age what they remember about The Sweeney, and you will probably be told to "Shut it!", and they'll mention a brown Ford Granada.

The Sweeney, so named after the Cockney rhyming slang: Sweeney Todd – Flying Squad, followed on from the highly successful pilot episode 'Regan', produced as part of Thames Television's Armchair Cinema series in 1974.

The series, written by Ian Kennedy-Martin, also made John Thaw and Dennis Waterman household names. The first series of The Sweeney was first aired in January 1975 and instantly became a ratings winner, with over 8 million regularly tuning in to see Detective Inspector Jack Regan and Detective Sergeant George Carter of The Flying Squad dealing with the hardened criminals of London. The series was quite a departure from the typical police series of the time.

The cosy world of Dixon of Doc Green and even Z-Cars was considered pedestrian in comparison to the rough, tough 'coppers' of the Flying Squad depicted in The Sweeney.

Crucial to Regan and Carter's role

For this month's Little and Large, **Steve Coles** turns detective and investigates a couple of likely suspects.

in chasing down the villains was a set of wheels capable of keeping up with the blagger's Jags. Early on, a deal was proposed with British Leyland, but they simply wouldn't guarantee the same cars would be supplied each time for filming, making continuity of cars almost impossible. Instead, a deal was done between Ford and Eusten Films, a subsidiary production company of Thames, to supply the vehicles.

For the first three series, Jack Regan was driven around (he never drove the squad cars himself) in NHK295M, a Copper Brown Ford Consul GT. The combination of power from the 3-litre Essex V6 and predictable rear wheel drive handling made it an ideal choice.

Ford was very insistent however, that none of their cars were to be damaged, so a couple of stand-in cars were sought. These appeared almost identical in appearance to the real car and were simply given NHK295M number plates. Notable episodes that contain a great deal of sideways Consul action include 'Stoppo Driver' from series one and

'Faces' from the second series. For this month's Little and Large, we are focussing on the Consul GT.

Despite the obvious popularity of the programme, models of its star cars have been rather few and far between. The earliest model of Regan's Consul GT was released in 2001 by Richmond Toys. Although this wasn't their first licensed model, as they had been producing generic emergency service vehicles under the branding of The Bill, London's Burning and Holby City, it was their first accurate model of a real vehicle.

First impressions are good. The window box is blue with the Sweeney logos and 'Sweeney Todd, Flying Squad' script behind all logos and images. A slightly blurred action shot still of the car, taken from the episode 'Faces' and a yellow "TV classic collectable" complete the front of the box.

The model itself is, it has to be said, something of a disappointment. At a glance, things look ok; correct number plates, fairly good colour match, the correct details for a GT spec Consul and



**ABOVE** Richmond Toys got the colour of Regan's squad car about right. The cast-in wipers could have been picked out in silver though, as could the window trims.

even the basic body shape looks about right.

However, there are slight issues with the shape of the front wheel arches, the awful door handles and oversize badges all round and the grille mounted spot lamps of the GT seem to be set within the grille. It also seems to be a completely random scale; it's clearly larger than 1:43 but smaller than Corgi and Matchbox's once popular 1:36.

Whilst the opening parts; doors and bonnet, certainly add play value, they don't really do the model justice. It is real shame; it's the first and to-date only fully licensed model of The Sweeney's Consul GT and it doesn't quite make the grade as a scale model. As a fully kitted out replica of The Sweeney's Consul GT though, it's bang on!

For the second model we need to downsize somewhat. It comes courtesy of Oxford Diecast and forms part of their extensive 1:76 range. NHK295M was the first livery of their Mk1 Granada/Consul casting and was released as 76FC001 in the first quarter of 2012.

This model comes without any reference to The Sweeney, with only the number plate as a pointer. Oxford simply label it as 'Ford Consul – Gold' but for NHK295M the colour is wrong; the shade of brown used is much too light.

However, this can be forgiven because



**ABOVE** The overall shape of Oxford's 1:76 Consul GT is good. The colour is noticeably different (and wrong) for NHK295M

the shape is spot on. The proportions look right and the details are great. It boasts the correct Granada grille that was fitted to the GT spec Consul with spot lamps mounted in front and badges that look in scale and correctly positioned, right down to the red 'GT' on the boot lid.

Like the Richmond Toys version this one has the outline of the Consul GTs

steel sunroof cast into the roof.

The only criticism of this model is the lack of over riders on front and rear bumpers. However, this is a small criticism for what is otherwise an excellent model. Add it to some of the other 1/76 models that Oxford produce and you can set up a number of interesting Sweeney dioramas. Now, get yer trousers on; you're nicked! ■





No.  
**68**

# Superfast 1969-1982

Charting the evolution of the Matchbox Superfast range during the Lesney years.

## PORSCHE 910

**Production:** 1970-75

**Catalogue:** 1970-75

**Box Styles:** G, I

Replacing the marvellous Mercedes Coach with its fabulous roofline windows, Porsche 910 could be forgiven as it's such a good replica of a classic racing car.

Like the Ford Group 6, the Porsche 910 was a relatively short-lived racing car although it was much more successful.

The Matchbox model was nearly always painted a rich metallic red, unlike the real cars, which were generally white with a red, blue or green panel on the nose when raced by the factory. The base was unpainted, the detailed interior was white, and the glazing was normally a light amber, but could also be in clear plastic. There was usually a white number "68" label on the nose, but it can be found with the "45" label from the Ford Group 6, whilst examples from the Racing Specials gift set have additional 68 labels on the sides. On the whole, this was an excellent model of

the real car, let down slightly by the prominent twin headlights being painted in body colour, rather than silver or being part of the base casting or window moulding.

The only colour variation of the 910 was when it was included in the "B-r-r-oom Stick" set (or "Zing-O-Matic" in the US). As a toy, it wasn't very impressive but at least it included an exclusive Porsche 910 in white as one of its car choices, which looked a lot more like the real car.

## COSMOBILE

**Production:** 1976-79

**Catalogue:** 1976-79

**Box Styles:** J

Cosmobile was another futuristic, space age vehicle and a companion model to Planet Scout. However, it was very different in appearance, with a short nose and narrow, single seat cockpit. It was painted metallic mid-blue, with a lemon yellow base, amber windows and chrome interior and headlights. There was a pair of chrome tubes along the

roof, although it was not certain if these were for propulsion or were some type of weapon.

In 1979, the colour scheme was changed so that it now matched Planet Scout with a red body and beige base, and the interior was now white. Cosmobile was also included in the Command Force set, in metallic light green with black base, and some dark blue and black examples were produced, the latter being very rare and worth a tidy sum if found.

## CHEVROLET VAN

**Production:** 1979-82

**Catalogue:** 1980-82

**Box Styles:** L

Matchbox was rather slow in catching up with the 1970s craze for custom panel vans and trucks. When they finally got around to it in 1980, the result was this handsome model of a lightly-customized Chevy van.

Originally, it was intended for the model to have opening rear doors and an interior, but cost-cutting measures led to these features being dropped. However, it had a pair of sunroofs, oval side windows and raked rear wheels.

Initially the body was painted orange, the base and grille were in bare metal, and the windows were blue tinted. Printed along the sides were a thick blue stripe and two thin red ones, although sometimes these colours could be reversed, and occasionally black or white stripes could be found.

The Chevrolet van proved to be a very popular model and was released in a large number of different colour schemes. In 1981, it was changed to green with yellow and black stripes, then the following year it was reissued in silver with a large vampire bat decal on the sides - it was called "Vampire"! ■



FOR COLLECTORS, BY COLLECTORS  
INSIGHT, STORIES, DISCOVERIES, AND MORE

# COLLECTORS GAZETTE

March 2026 • Issue No 503

[www.ccofgb.co.uk](http://www.ccofgb.co.uk)



Power Rangers

## Zord Evolution

The story of Power Rangers' mighty mechs, from toys to collectables

Hornby  
DUBLO

BREAKDOWN CRANE



### + MCM COMIC CON

Pop culture collecting meets  
costumes and characters

### + TOY STORIES

A nostalgic look back at the  
early days of model collecting

### » TAMPERS & GRINDERS

An in-depth look at models of the remarkable  
equipment used to keep the railways on the move





# TOYS & COLLECTORS' MODELS

LACY SCOTT  
& KNIGHT

est. 1869

Friday 27th February at 9.30am  
*further sales in April, June, August,  
October, December*



**to include** Live steam and sundry related items, all gauges of model railway & railwayana, diecast models including Corgi, Dinky, Matchbox, tinplate & Triang, juvenalia, Britains & plastic kits etc.



The Auction Centre | 10 Risbygate St | Bury St Edmunds | IP33 3AA  
e [olegett@lsk.co.uk](mailto:olegett@lsk.co.uk) t 01284 748628 [www.lskauktioncentre.co.uk](http://www.lskauktioncentre.co.uk)





# Mighty Morphin' Zords

George Chrysostomou explores the history of the Power Rangers' mighty mechs!

**T**he Power Rangers have been elevated to icons of a whole generation. The show, which originated in Japan before receiving a Western reinterpretation, has become a mega force within both the children's entertainment space and the toy industry. While it might have had plenty of younger fans during its heyday, *Power Rangers* has also built a significant adult fandom, which is entrenched in the history of the show. There's a lot of *Power Rangers* lore to get through as the continuity continuously shifts and new eras emerge. One consistent element throughout the franchise's life cycle is that of the Zords. Zords are huge mechanical tools in the

Power Rangers' arsenal, sometimes with bio-mechanical elements.

They are essentially big robots that the protagonists pilot from inside and are critical for battling the monstrous forces that have quite the habit of scaling up. Zords can combine to form a Megazord, a much larger, team-based mechanical juggernaut that is far more powerful. Over the years, there have been numerous Zord designs across *Power Rangers*' many seasons, but almost all of them have been immortalised in statue or action figure form.

With so many characterisations, designs and options to choose from, it's only logical that Zords soon became a collector's item within the community.

## ZORDS IN POWER RANGERS HISTORY

In Japan, *Power Rangers* is known as *Super Sentai* and originated from the 1975 show, *Himitsu Sentai Gorenger*. The series had a very basic mecha design that's inspired by sleek aircraft, but the Zord concept would shift as the franchise's audience grew. It wasn't until 1993 that *Mighty Morphin Power Rangers* would air, the western adaptation of the series which introduced its fan base to the animal-influenced Zords that would remain iconic throughout the show's run. The Zords themselves became popular toys and were widely available, with Bandai

1. Kyutama Gattai Kyuren'o from 2017's *Uchu Sentai Kyuranger* Zord figure



2. Dino Super Charge Megazord.
3. Gosei Sentai Dairanger.
4. King-Ohger Super Sentai Zord figure.
5. 2004 Thundersaurus Megazord from Power Rangers Dino Thunder.

working on the licence since the 1970s. In fact, while no collector's vault would be complete without these additions, they aren't exactly hard to come across, because of their importance.

In the years since, action figure sales have always been vital to *Power Rangers*' business model, but the Zords themselves were the big ticket item that everyone seemed to want. The ability to transform and connect to other Zords meant that fans continued to collect the whole line, with every season promoting a new range of Zord designs. In total, there are well over 300 different types of Zords from across *Power Rangers* and *Super Sentai* programming and thus a significant array of collectable items to purchase. Everyone will have their favourites, with many influenced by the show they grew up watching. While some seasons have more significance and longevity than others, the popularity of certain Zords is usually more likely to be influenced by the designs themselves.

However, there's been a turning of the tide in recent years, as the sales from *Super Sentai* products in Japan failed to warrant the cost of production on the series. After decades on top, it was announced that *Super Sentai* would be coming to an end. Naturally, there is always a chance to revisit the property down the line, but with this news, there was also a shift in the collecting community. Because products from a show that has now been cancelled are more likely to increase in value, as their rarity solidifies. Meanwhile, *Power Rangers* went through a similar cancellation, however reports have emerged that a brand-new show may be in development, with Disney+ eyed as its home. That means a new era is dawning, one that makes those initial Zord collectables more relevant.



4



2

## SUPER SENTAI SET THE STAGE

Many of the *Super Sentai* series and thus Zords were adapted to the western variation of *Power Rangers*, but there are plenty of seasons that never aired outside of those original markets. The Zords from these seasons are often more sought after, especially by European and North American collectors, because they were not available in general stores. As late as 2023, for instance, *King-Ohger Super Sentai* aired in Japan, but never in the US or UK. The Ohsama Gattai King-Ohger was the Megazord or giant robot of the series, which was beautifully remade by Bandai. The complex model comes with wings, horns, butterflies and all the other animal motifs that tie the product into the individual Zords, which are inspired by insects.

Historically speaking, though, *King-Ohger Super Sentai* is far from the most significant season in *Super Sentai*'s legacy and neither does it boast the best Zords. Many would point to 1993's *Gosei Sentai Dairanger* as a standout season, which was partially adapted for *Mighty Morphin Power Rangers* but never fully brought to international territories. The Zords here are exceptional, the robotic mechas based on a range of mythical beasts that combine together for a monstrous final form. While it's a simple toy design and one with blocky shoulders and a bulbous sphere at its centre, it is also a much-loved collector's item and demonstration of the show's early success.

Other incredible architectural pieces that highlight the design innovation of the product

line include the Galactic Megazord or Kyūtama Gattai Kyūren'ō from 2017's *Uchu Sentai Kyuranger*, which was intricately created to be modular in its design, thus placing any smaller Zord in any position on the main robot, and the Shogun-inspired Megazord from 1994's *Ninja Sentai Kakuranger*, which was built to resemble a Japanese castle.

## BELOVED ZORDS IN EVERY ERA

Whether it's the early *Mighty Morphin Power Rangers* or the new generation *Power Rangers S.P.D.* in 2005, the Zord and Megazord designs kept on coming, always inspired by the original *Super Sentai* shows but occasionally putting a twist on what the audience were familiar with. Take the *Power Rangers Ninja Storm* Storm Megazord in 2003, for instance. The final product design is still a fan-favourite for its absurdist lion and dolphin arms, and its genuine versatility. Bandai's recreation of the design was spot-on, standing tall as a mighty display piece.

As a product, the Wild Force Megazord from 2002's *Power Rangers Wild Force* is of a similar style, but nonetheless an attractive build, while the Supertrain Megazord from 2000's *Power Rangers Lightspeed Rescue* threw all the rules out the window with a more mechanical, vehicular-based armour. Admittedly, the final Bandai product was boxier and rather plain compared to predecessors, but these are the very reasons the collectable item stands out. Credit also has to go to a personal favourite, the 2004 Thundersaurus Megazord from *Power Rangers Dino Thunder*, for somehow making dinosaurs





even cooler. As a trio of Zords, those figures were already a strong ensemble, but considering the mechanics required to bring them together in a physical product, it is remarkable that a Megazord could be created at all. In each instance, it's obvious that the show's designs were partially based on creating toys with longevity.

### THE ZORDS THAT TURNED COLLECTABLES INTO CASH

Of course, it's not just the design of the Megazords and Zords which impact and influence the collecting community, it's also the rarity of an item. Some of the most expensive *Power Rangers* toys and collectables ever sold are Zords, which are truly difficult to find. The most expensive Megazord, for instance, is the Bandai-made *Denji Sentai Megaranger* or *Power Rangers in Space DX Galaxy Megazord* from 1997, which was produced in gold! The Japanese product utilised the original Megazord design but was entirely gold-painted, with some white detailing. It sold for \$4000 in an auction in 2021. A 14K gold iteration of the 1999 *Power Rangers Lost Galaxy* Galaxy Megazord was also released by Bandai, which sold for \$3,230 in 2022.

Elsewhere, two variations of the Dino Megazord have also proven to be high-ticket items, perhaps partially driven by the popularity of that original series and the Zord's aesthetic. Known as *Kyoryu Sentai Zyuranger* in Japan, Bandai's DX Dino Megazord, which was highly detailed, sold for \$1,800 in 2011. Not

to be outdone, a golden version of the 2016 *Dino Super Charge* Megazord was listed and sold at \$2,999.99. Nostalgia is a powerful thing, and evidently, those highly edited and golden versions of the Megazords are currently what the collector's community is most interested in.

It's worth noting that it was the *Kyoryu Sentai Zyuranger* Dragon Buckler that has been given the highest value so far, a vintage product from 1992 that sold for \$6,100. While the Megazords may prove to be highly valuable down the line, it would appear that it is those older products of limited availability that will continue to reappear as ones to watch for now. Since *Himitsu Sentai Gorenger* first aired in 1975, featuring the Mecha, chances are that those early Zord-adjacent toys from Bandai's Popy division will be of particular interest. The gorgeous 2000 *Power Rangers Lightspeed Rescue* Omega Megazord and premium Isis Megazord from 2013's *Power Rangers Mega Force*, in mint box condition, are especially difficult to find and will only increase in value.

### ZORDS ASSEMBLE

The Zord collecting space is expected to become much more competitive in the coming years, not just because fewer products will be available, but also because it is very difficult to find mint-condition collectable items. Both *Super Sentai* and *Power Rangers* figures are notorious for not quite being treated with the careful hand that other collectable items have been subject to. While products like *Star Wars* figures have been treated like collector's

items for years, the *Power Rangers* have been unboxed, played with, sold at car boot fairs, and generally been through extensive wear and tear. It's possible that plenty of collectors have Zords, in particular, in their collection, perhaps representing that one big purchase during their own childhood. However, the chances are that they are out of their box, crammed together with another connecting Zord and not suitable for auction.

This is very much a space to watch and a really exciting one for those who are at the forefront of discovering those classic items. As has been shown, there appears to be no limit on the range and scale of a sale and with some specific items, especially from the Japanese market, already sold in limited numbers, a few of those may just be the next big ticket item. The true legacy of the Zords is not in their collectability, nor in their potential as a product of great monetary value. Rather, they have always been action figures with character, charm and functionality. While both *Super Sentai* and *Power Rangers* might have always been designed to sell toys, both shows really cracked the code and will forever hold a special place in the hearts of fans. Because the unique blend of action-comedy, anime influences and classic mech design has meant that many of these Zord designs really stand the test of time as beautiful architectural pieces. ■





**W**hilst Formula One has long since been seen as the pinnacle of motorsport, both from a technological point of view and 'superstar' driver personalities, saloon car racing has brought motor racing to the masses. "Race it on Sunday and sell it on Monday" became the norm, and it was this showroom appeal that attracted both spectators and drivers alike. Since the first championship back in 1958, the British Saloon Car Championship (BSCC) and, more recently, the British Touring Car Championship (BTCC) have drawn massive spectator and manufacturer support. It has constantly evolved through several guises with different classes, different rules, and weight penalties, but the fundamentals have remained constant; the cars raced look identical, or nearly identical, to the road cars you and I drive every day. It was this everyday appeal that first attracted me, as a 12-year-old boy, to the BTCC. Watching Ford Sierras tearing round Britain's top racetracks on the BBC's Grandstand was just magical! Ok, so they weren't quite your average everyday Sierra, but the race-tuned 550bhp RS500 Cosworths. Nevertheless, it still looked like a Sierra.

Back in 1993, the British Touring Car Championship was riding on the crest of a wave. A new, single, 2-litre formula

# BTCC cars vs road cars

**Steve Coles** explores how everyday saloon cars were transformed into British Touring Car Championship contenders, pairing iconic racers with their road-going counterparts from across the BTCC's most celebrated eras.

had been introduced in 1991, which caused a steady increase in visitors to the circuits along with ever increasing TV coverage. This, in turn, meant more car manufacturers wanted a piece of the action. BBC's motoring programme 'Top Gear' (the original half-hour show on BBC 2 on a Thursday evening) saw an increase in popularity as an opportunity for a bit of fun. Jeremy Clarkson and fellow presenter (and BTCC racer) Tiff Needell pitched some of the top BTCC drivers against the clock, but not in their regular race cars, but in their road going equivalents (the rules back then insisted

the race cars be based very firmly on a road car). It was seeing this segment again on YouTube recently that gave me an idea; to look at some of the models I have of BTCC and BSCC cars and their road going equivalents. This is by no means a complete list of all BTCC models, or even championship winning cars. It is more of a snapshot through history, if you like, into the heart of these everyday looking racers. To make things easier, we shall look at them in chronological order.

By the time John Fitzpatrick won his championship title in 1966, the championship was well and truly





**FACING PAGE** Ralph Broad turned the humble Anglia into a championship winning car in 1966. The Atlas Broadspeed Anglia correctly features missing bumpers to save weight. The Lledo Vanguards Anglia featured here almost matches the Broadspeed colours.

**ABOVE & BELOW** The Broadspeed Dolomite Sprint here features the correct front bib spoiler and much more accurate looking wheels when compared to the Vanguards. The Vanguards Dolomite was one of several 1970s casting introduced by Corgi in the year 2000.

established. The class system meant that the champion didn't need to win races outright, but simply win their class each time. This is what Fitzpatrick did; although he tied on points at the end of the season, his greater number of class wins in his Broadspeed prepared 105E Ford Anglia awarded him the title. The race car featured here, like the majority in this feature, is from the Atlas Editions British Touring Car Collection; first launched back in 2016. Whilst very similar looking to the Vanguards Broadspeed Anglia from their 1996 two car set, it is a different (possibly the existing IXO) casting. Whilst ever so slightly larger than the Vanguards casting, the shape is good. This one trumps the Lledo version thanks to its impressive detailing, as you would perhaps expect from a model 20 years newer. Highlights for me are the side exiting exhaust, fine badging (including the Broadspeed logos) and the wheels. The road car I've chosen is from the early days of Lledo Vanguards, and when seen alongside the race version, it becomes more apparent why I've chosen this particular version. Being from the Lledo days, it is missing the additional windscreen wipers and jewelled headlights of the later Corgi releases, but it does have a nice level of detail and really shows the charm these early Lledo Vanguards brought to the collector's market.







**LEFT** Andy Rouse built his own SD1 Vitesse for 1984 after Austin Rover withdrew from the championship at the end of 1983.

Our next car takes us into the 1970s. The class system was still in place during the 1975 season, which was the second year of running to Group 1 rules in an attempt to reduce costs, as Group 1 required more of the original car and components to be used for racing. With one more class victory than Win Percy racing a Class A Toyota Celica GT, Andy Rouse won the first of his four titles in 1975, driving a Class B Triumph Dolomite Sprint prepared by the Broadspeed team. The racing model here is, again, taken from the Atlas Editions series, while the road car is once again from the Vanguards stable. Whilst Lledo also produced a replica of Rouse's car, it is more interesting to compare the two different castings. The basic shape of the Lledo casting is good, although the entire front looks too squat or small. It does, however, have two big criticisms; the poorly replicated wheels and the total lack of the Sprint's characteristic front spoiler. The Atlas car, fortunately, does not suffer in the same way. In fact, I reckon these wheels are superb. The finer detailing, such as the crosses over the headlights and neat side exiting exhaust, are also very neatly done.

1984 marked the start of a new era of saloon car racing in Britain; the previous four-class system (classified according to engine size) was replaced by just three classes, as dictated by the FIA's Group A regulations. Once more, it was possible to

win the championship without winning a single race overall. For 1984, however, this was not the case. Andy Rouse was once again triumphant, this time at the wheel of his mighty Rover SD1 Vitesse. This was the second of a trio of back-to-back titles for Rouse, finishing 7 points ahead of Richard Longman driving a Class C Escort RS1600i. Rouse won the '83 title, despite finishing third in the overall standings, because the RAC disqualified the entire Rover team over bodywork irregularities and engine installation issues, thus handing the title to Rouse. Austin Rover withdrew from the championship with immediate effect. In 1984, Rouse developed his own car, under what would become his long-time sponsor, Industrial Control Services Ltd. The model here is another from the excellent Atlas BTCC collection, to which I have paired a Corgi Vanguards SD1 Vitesse.

One of the stalwarts of the BTCC throughout the 1990s was Vauxhall. Having introduced the Cavalier in 1990 in the then new 2-litre class, it quickly established itself as one of the front running cars as the 2-litre formula became the single 'rule'. 1993 was the last season the works cars were run by Dave Cook Racing Services (DCRS) as for 1994 the works contract was awarded to Ray Mallock, who had run a pair of 'semi-works' Cavaliers in both '93 and '94. By 1995, the Cavalier with its new

aerodynamic package (no longer requiring homologation but kept within strict boundaries) was a winning combination with John Cleland taking the title that year. I have chosen the 1993 Cavalier for this feature as it has one of my favourite liveries (and awesome looking 19-inch OZ Racing wheels in gold). The model is from the short-lived Racing Replicas brand, who specialised in touring car models. These featured some great detailing with correct, negative stance, wheel camber on most models. Whilst the basic casting is rather crude by today's standards, it is a most charming model. The BTCC Cavaliers were initially based on the top of the range GSi2000 model, so I have paired the Corgi Vanguards Cavalier GSi2000 in Westminster Blue, the only colour they have released of this particular spec. Side by side, the road car sits naturally taller than the race car, something that can't be said of all models (although the Vanguards Cavalier does seem to sit rather tall).

After two seasons learning front wheel drive racing and steadily improving the Toyota Carinas, Andy Rouse lost the works Toyota contract for 1993, but landed the Ford works deal to develop the brand-new Mondeo into a successful touring car. After a lot of pre-season testing, Andy concluded that the Mondeo was not yet competitive to race, so the team missed the first half of the season. Although a rear





**ABOVE LEFT** The Moonraker Blue Vanguards model here is of a Series 2 car, with the deeper front spoiler fitted to the Vitesse model.

**BELOW LEFT** The Atlas race car is one of several here to feature a side exiting exhaust.

wheel drive Mondeo was tested, a clever interpretation of the rules whereby Rouse effectively “disconnected” the drive to the front wheels of a four wheel drive Mondeo; it was a front wheel drive car that debuted at Round 8, Pembrey, in June. Andy had hired New Zealander Paul Radisich to drive the second car. The Mondeo was, by the end of the season, the fastest car, and although Radisich didn’t win the title that year (that went to German Joachim Winkelhock driving a BMW), he did finish a very credible third overall. 1994 started strongly for the Fords; often fastest behind the all-conquering Alfa Romeos. Both Mondeos here are from Minichamps, although Racing Replicas did also produce the 93, 94 and 95 Mondeos. The road car appears to represent the sporty Si model, although curiously, Minichamps have omitted the rear spoiler. The racing version, also without a rear spoiler, is correct for 94; as Rouse realised the Ghia saloon without the Si’s rear spoiler was actually more suited to the BTCC. This model also features the correct single front wiper as well as the internal roll cage and fire extinguisher.

1994 also saw the arrival of the works Alfa Romeo team from Italy. They had very cleverly interpreted the rules surround aerodynamic aids fitted to race cars; Alfa had produced a special homologation version of the 155 complete with ‘bolt on’ wings and spoilers, significantly improving

the aerodynamics of the car. The 155 was to revolutionise what would become known as Super Touring racing. The rules stated that aerodynamic wings could be used provided they were fitted to a limited number of road cars. Alfa supplied said road cars with these parts in the boot for owners to fit themselves. On track, their aerodynamic advantage meant that the scarlet red Alfas dominated the first part of the season, until protests from several teams meant they had to run the cars with the wings in the retracted positions. By the midpoint of the season, BMW and Renault had hastily homologated their own road cars with additional wings. 1995 saw the addition of rear wings and front splitters form part of the racing regulations. The 1994 Alfa 155 models here are from the Atlas BTCC Collection and Minichamps. The Minichamps model represents a 155 Twin Spark 2.0, which formed the basis of the ‘Silverstone’ homologation special. The BTCC version here shows the spoilers in their retracted positions. The detailing on this model is once again superb, both inside and out.

The Super Touring bubble burst at the end of the decade, with only 3 manufacturer entries for the 2000 season. Costs had escalated so much that the BTCC was seen as unviable by most teams. New rules brought in to reduce costs did change the shape of the championship but

did also lead to increased manufacturer entries over the next few years. The new rules permitted larger wheel arch extensions and a much larger rear wing. These made the cars look a little like the DTM German Touring Championship cars from the late 1990s/early 2000s; except in the BTCC these were more for appearance’s sake rather than actual aerodynamic purpose. Vauxhall continued to enter a ‘factory’ team throughout these new regulations. For 2008, under the VX Racing banner but run by the Triple-8 team, Vauxhall ran their Super2000 Spec Vectra for its second season, and for the second season in a row, Italian Fabrizio Giovanardi won the title. The youngest BTCC model featured is from Atlas Editions while the road car is an Opel badged Vectra OPC (The Opel equivalent of Vauxhall’s high performance VXR badge) from Schuco. Both models are crisp and highly detailed; the Arden Blue of the Schuco road car I think, is particularly striking. When placed side-by-side, the larger wheel arches of the BTCC car are easy to see compared to the road car.

There are numerous other BSCC/ BTCC models out there, plus their road going counterparts. I hope this snapshot has perhaps opened a door of curiosity. Maybe you already have similar pairings in your own collections? Maybe you want to start to track some down. ■



**W**as there a time when the council used to clear up fallen leaves, or am I imagining it? It was just something you took for granted. Someone must have tended the flowers in the park, dug out the weeds growing in the kerbs, and cleared the drains so they didn't back up and flood the road.

I'm sure these guys had some rudimentary power tools, but a lot of it was done with a shovel. Or maybe a spade. Now there's a tool which has fallen out of favour. Everything has to be mechanical and powered these days. Someone could put their back out with one of those spade things. The trouble is, it's quite expensive to have a machine replicate what a man can do with a spade.

So, our railways used to be maintained with picks, shovels and barrows. Said tools being brought in by rail. If the location happened to be accessible by road, so much the better. Of course, you might have to scramble up or down an embankment and climb a fence to actually transition between road and rail. Since rail privatisation, and its accompanying health and safety standards, scrambling up the embankment like generations before you is no longer acceptable. Hence the plethora of galvanised steel staircases with gates, platforms and warning signs which have sprung up across the network in the last thirty years.

In olden days, when rail preceded roads, the easiest way to move around the network was on said rails. Not anymore. The slimmed down railway doesn't have room for maintenance trains and equipment to hang around. New high speed lines all have access roads running alongside them. All rail maintenance is now road based as much as possible. As for remote lines without road access, if it's a bit wet or windy, it's now considered acceptable to just cancel the services. Especially if the storm has a name. Oh look, here comes Storm Edith. Better shut down the network to be on the safe side (and for our operational convenience). Luckily most rail travel is booked online, so you'll get an email to say your train is cancelled!

## TAMPING AND BALLASTING

Tampers are probably the most often seen items of On Track Plant: they lift the track and pack ballast stones under sleepers so that the track is level, smooth, and correctly aligned. They use hydraulics, vibration and precise measurement systems to adjust track geometry automatically. Stoneblowers are an alternative to tamping; they inject small stones beneath sleepers using compressed air to correct alignment.

Ballast regulators shape and redistribute ballast (the stone bed beneath the tracks)



1

# Tampers and grinders

You see them hanging around in sidings. You've no idea what they do. Neither has **Mark Nolan**, but he's going to find out about the machines they call 'On Track Plant'.

after tamping or renewal work. They even help prevent washouts after rain. Meanwhile, grinding units are used to remove small amounts of metal from the rail head, extending life and improving ride quality.

## MPVS

Network Rail uses Multi Purpose Vehicles like the Windhoff-built units, for tasks such as weed spraying, de-icing, sandite application, and rail head cleaning. This is particularly important in autumn and winter. The Windhoff MPV is a purpose-built two-car engineering and infrastructure train introduced in 1999. The MPVs replaced an ageing fleet of departmental vehicles, many of which had been adapted or repurposed to meet departmental needs rather than being designed for the role they would eventually serve.

The MPVs entered service with Railtrack

and are now operated by Network Rail.

Bachmann Branchline produces a set of two highly detailed vehicles each adorned with multiple removable modules which sit on the two decks.

This year (2025), Network Rail awarded around £1.1 billion in contracts for around 70 On-Track Machines to multiple suppliers, showing the massive industry investment in maintaining the UK network. These machines operate 24/7 and are designed to be highly reliable and available.

## WHY COLLECT?

OTP models tend to have complex underframes with lots of pipework and brushes. They reward close-up viewing, making them ideal for display cabinets, cameo layouts and dioramas. The models tend to be produced in small runs which appeal to a niche audience and disappear





2

1. Hornby-Dublo 4620 76 ton breakdown crane; a hugely popular heavy diecast model which was produced by Meccano Ltd from 1959.

2. Bachmann 31-578 Windhoff MPV 2-car set Network Rail Yellow. The Windhoff MPV is a purpose-built two-car engineering and infrastructure train introduced in 1999.

quickly from retailers. This makes them surprisingly collectible, especially specialist machines rather than generic tampers.

These models bridge the gap between railway operation and infrastructure, representing the modern railway just as much as the trains themselves. OTP models sit at a fascinating crossroads between infrastructure and rolling stock, which is why they punch above their weight in both collectability and visual interest.

## THE BIG HOOK

To go back to the daddy of them all, no amount of tinplate or plastic says 'heavy mechanical model' like over half a kilo of Meccano Mazak. The 4620 Hornby-Dublo 76 ton breakdown crane was a hugely popular model which was produced from 1959. It was the perfect 'add-on' present, with both presence and play value. The two crank handles for the jib and winch drums somehow manage to disappear, or at least not look too prominent.

The boom itself is a work of diecast art, with a fine lattice. It's so strong, I've never seen one broken. The castings are incredibly consistent, detailed and long lived. The model uses green string to represent the chains which operate the crane. A diecast hook on the end has enough weight to hang convincingly.

Despite the complexity of the wheels, bogies and trucks, the crane will still negotiate most model track formations, and pass line side furniture without fouling or derailing. Quite an achievement by the Meccano engineering department. There is a wealth of detailing on the casting, although much of it is lost beneath the thick coat of



3

3. Graham Farish 377-700ZDW weathered Network Rail JJA MK2 auto-ballaster with generator unit curved top.



4

4. Graham Farish 377-700A weathered Railtrack JJA MK2 auto-ballaster with generator unit.

5. Liliput 38010 HO Gauge Plasser Thuermer Track Tamer Machine (non motorised).



5



6

6. Oxford Rail OO gauge Land Rover Defender with road rail equipment. The hydraulics position the rail style wheels into position, leaving the rubber tyres touching the track. The die-cast model features poseable rail wheels which can be set up for road use or down for rail use.

red paint carried by the model. The paint finish was matt until 1961 when it changed to gloss, and these versions command a premium. Even more valuable is a late version (1964) with yellow box lid, thin Delrin couplings and plastic grips on the winding handles.

The steam crane was supplied with a match truck (essentially a flat wagon with a boom rest). There were also two short trolley wagons, known as 'relieving bogies' to spread the weight of the crane. Each carried two screw jacks which are often missing. Replicas are available.

## RRVS

Road-Rail Vehicles (RRVs) are excavators and lorries that can lower rail wheels and drive on the track. Though technically OTP, the models are visually closer to construction plant, but still great for small displays.

Even the Land Rover Defender comes with Road Rail equipment. These cars access the track via a crossing or purpose built ramp. The hydraulics position the rail style wheels into position, leaving the rubber tyres touching the track. Now that's what I call a self-driving car!





**A**s toy fairs go, the MCM Comic Con events are toy fairs with that extra pizzazz! Hundreds of merchandise stands with everything for collectors of models, figures, and collectables of classic TV and film titles, such as *Star Wars*, *Doctor Who*, *Batman*, *Superman* and *Aliens*. Not necessarily the place to find Airfix, diecasts, tinplate, and Dinky, however.

In addition to there being row upon row of fascinating stands to browse, there's also the entertaining option of rubbing shoulders with a variety of superheroes and villains. Cosplay enthusiasts – that is, people who like to dress up as their favourite character. And Cosplay is a key factor of Comic Con shows.

MCM Comic Con is held at major exhibition halls such as Olympia London and the Birmingham NEC, amongst other large locations. And seeing the amazing costumes that many Cosplay enthusiasts create really has to be admired.

# A toy fair to get dressed up for!

Every other month, **Ann Evans** and **Rob Tysall** head out to review the UK's finest toy fairs. This month, they explore MCM Comic Con, where pop culture collecting meets costumes, characters and celebrities.

Visiting the London and the Birmingham Shows recently, the *Gazette's* team of Ann and Rob were stopped in our tracks after seeing an extremely authentic Night King from *The Game of Thrones*, who looked as if he'd just walked off the film set.

The man behind the mask was Ashley, who explained that his costume had been made for him in America, which he'd

adapted to give the look that he wanted. It included a realistic ice sword made from resin and a young dragon perched on his arm made from acrylic putty and balsa wood. Very effectively, its wings flapped, its head turned, and the next incarnation of it, he explained, will have it breathing smoke!

At Comic Con events, you can also usually see the celebrities themselves, as





1. Who called Ghostbusters? 2. As if clowns aren't scary enough! 3. Creepy horror merchandise.

they sit, signing photographs (for a fee) for their fans. The London Olympia Show had something of a star-studded line-up of well-known actors – including three Doctor Who's – David Tennant, Sylvester McCoy and Colin Baker. The Birmingham event saw Peter Davison, Paul McGann, Sylvester McCoy and Colin Baker again.

The Olympia event also, a line-up of five *Aliens* stars, namely Mark Rolston (Private Drake), Ricco Ross (Private Frost), Cynthia Scott (Corporal Dietrich), Carl Troop (Alien Warrior Xenopedia) and William Hope (Lieutenant Scott Gorman). At a panel event, talking to a packed hall, they related anecdotes about their time on *Aliens* – including stunts and even who had the best death! They all commented on how impressed they were by the young Director, James Cameron, who constantly came up with ground-breaking effects in the film that the cast didn't really appreciate until they actually sat and watched the whole film at the premiere or a cinema much later.

Chris Barrie, who played Arnold Rimmer in *Red Dwarf*, was also there and gave an interview on the main stage. Ade Edmundson, of *The Young Ones* and *Bottom* fame, was a very popular celebrity there, meeting his fans. Then there was Sam Jones, who played Flash Gordon in the 1980s film, sitting next to Brian Blessed OBE, who played Prince Vultan – still sporting that bushy beard and booming voice!



The *Gazette* were fortunate enough to chat to actor Paul Blake, who played the Bounty Hunter Greedo in *Episode IV Star Wars: A New Hope*. Paul, who hails from the Black Country, considers himself very lucky to get the opportunity to attend shows all around the world. "They are a lot of fun, and I really enjoy talking about my work", Paul added that he'd had a number of replica Greedo heads over the years, but the original one is kept at George Lucas' Skywalker Ranch in California.

As you might expect, there was a Dalek or two trundling around the hall, threatening to exterminate anyone who



4. Ashley in his Night King attire, complete with dragon. 5. *Aliens* actor Ricco Ross signs an *Aliens* keepsake. 6. Batman's armour-plated car, Tumbler.

got in their way, and a stunning display of replica Batmobiles brought in by Character-Cars that Batman fans could get up close to. Amongst them was the 1966 Batmobile that Adam West would have driven. Also, the car from the 2016 *Batman v Superman: Dawn of Justice* film, starring Ben Affleck in the leading role, and the Tumbler – the impressive, armoured vehicle recreated for the *Dark Knight Trilogy*, which featured Christian Bale as Batman.

There were plenty of merchandise stands





**7.** Horror masks. **8.** Brian Blessed OBE meeting fans. **9.** Meanwhile, Sylvester McCoy and Peter Davison sign autographs for eager Doctor Who fans. **10.** One of the stands selling movie props.

selling figures, vehicles and collectables from all of these popular TV programmes and movies, and for some people getting the relevant star's autograph tied in well with their shopping!

Naming just a few stands, there was Planet K, who specialise in Doctor Who toys and collectables. They said they were on a mission, travelling through time and space to help fill the gaps in your Dr Who collection. And with five different Dr Who's attending these shows, I'm sure many fans will have been spoilt for choice.

For collectors of tabletop games, trading cards, Pokémon and the like, then 7th City Collectables of Nottingham had lots on offer. And for anyone fascinated by the horror genre, not only could you bump into the Texas Chainsaw Massacre character or a zig-zag of zombies as you browsed the stalls, but you could indulge in some pretty gruesome figurines, masks and models.

The *Gazette* chatted to Baz and Stu, who run Space-o-matic, based in Warrington. Their stand was the stuff of nightmares, selling all kinds of scary stuff from Latex horror masks to killer clowns from outer space! Baz said he'd got into horror growing up in the 1980s when, as a young teenager, he would head to the video shop and rent out a VHS horror video – then invite all his friends around on a Saturday



afternoon to watch it.

Comic Con was definitely the place to indulge in replica film accessories such as swords and weapons, as well as genuine movie props and cinematic rarities – Movie Mania OnLine was one of the stands offering the real thing, along with other replica stands to browse. You could even sign up for a session with the Silver Sabres Combat Academy to learn how to wield a sword safely with fully trained instructors.

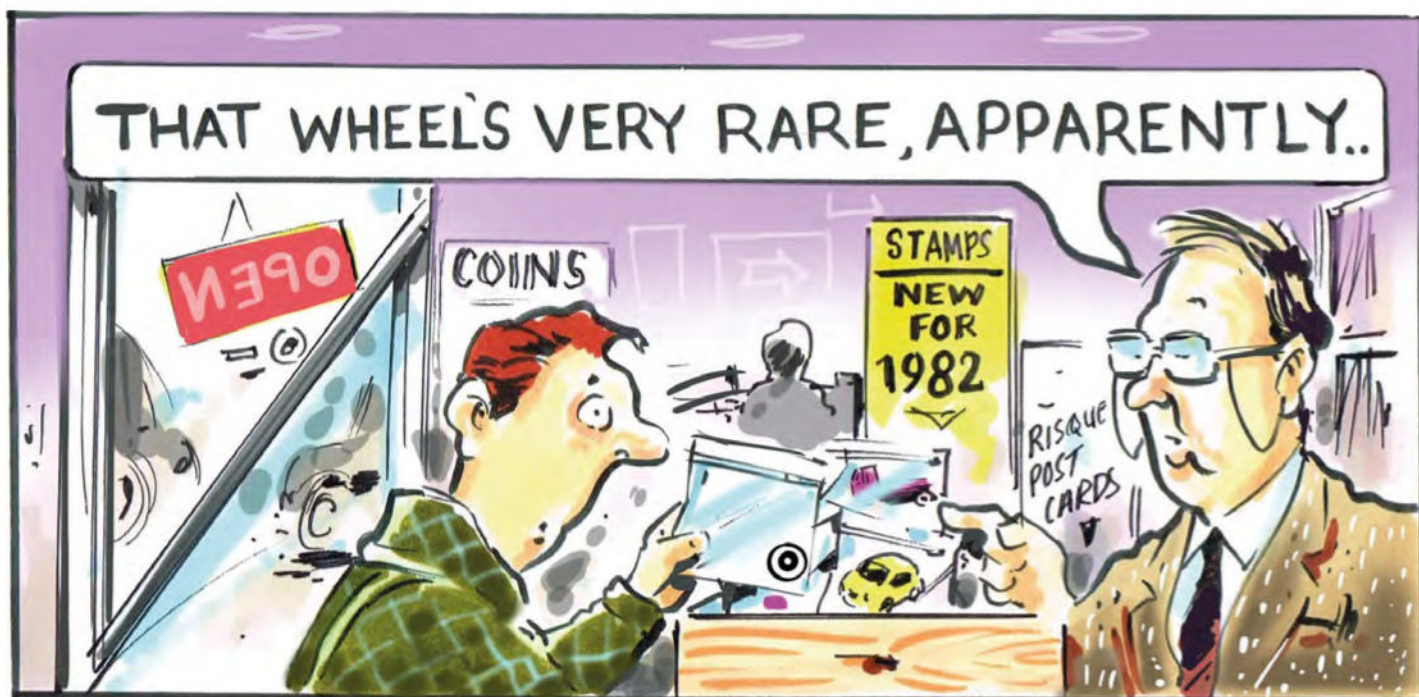
Anime and Manga collectables are a big thing these days, particularly amongst the younger generation. Japanese Manga brings you comics and graphic novels, while Anime is animated in the form of film, TV, video games, etc. And while it's not Dinky and Corgi, the Japanese trend has certainly got younger people hooked on collecting.

One of the nice things about the stands at the show was the individuality and uniqueness of what was being offered.



It wasn't all big brands and well-known names. A lot of stands were independent artists creating something quirky and unique, whether it was art, sculptures, comics, pins, clothing, metal toys – in fact, a whole range of items that might just become the antiques and rare collectables of tomorrow. ■





# Old Friends

Ed Karswell ponders the world of model collecting.

**S**talling out at a toy fair recently, I met two collectors, both of whom hailed from the same local market town as myself. As we talked, it became clear that we had all been regulars at the same collectors' shops in the past and the floodgates of memories of were well and truly opened.

There were only about four places where you could find vintage toys and models back in the early 80's. One was in the town centre and mainly traded in coins, stamps and postcards, which was pretty much the norm back then. However, the proprietor kept two trays of obsolete diecasts under the counter. Each model was contained in a clear zip lock plastic bag regardless of its condition. He would stand slightly bemused, sucking loudly on a boiled sweet whilst you rifled through these 'treasures'. Needless to say, in retrospect, none of these things were bargain prices.

The other shop was a little further across town. It was a general Antique shop owned by an elderly man who would slowly make his way down the back of his ill-lit premises to meet you, as all the toys were in the shop window. It was best to keep conversation to a minimum as he would regale you with tales of how proper collectors preferred this or that condition etc. I always felt slightly unworthy

following our exchanges but still returned regularly to see if the stock had changed at all.

Further up the road and away from the town centre was an enormous junk shop. Much of the stock was piled waist high in the window, and it was famous in the area. It looked almost impenetrable! It had been there so long that my father had frequented it as a boy back in the early 1950's. The opening times were erratic, to say the least. Its proximity to town kept me away at the time, but in later years, I struck up a friendship with the proprietor and mentioning my father assisted greatly. Several successful purchases were subsequently made.

The last shop initially sold second-hand railway items and had branched out into obsolete diecasts. This was really a collector's delight, and we were more than grateful to have it on our doorstep. The proprietor, an avuncular chap and his knowledgeable assistant put up with collectors just using it as a focal point. I can recall rainy afternoons standing around debating the merits of Dinky 38

series cars or the accuracy of Matchbox's first series Yesteryears. The stock was large and seemed at first dominated by multiples of some models such as Matchbox Austin A55's, Dinky Talbot Lago racing cars and not to mention a whole car park of Corgi Decca airfield lorries... work that one out? It was also the first place I encountered *Collectors Gazette*, which was then published quarterly and in a tabloid size format. It was full of faraway swap meets and dealers with ever more promising stock. On top of everything, the shop also gave one sense of belonging to a community. Of course, good things seldom last, and after a couple of relocations, the shop disappeared.

The jogged memories, though, were great, and all of us had a story to share about each of them. It was of course, second time around nostalgia, and the proprietors of these stores are now themselves sadly gone too. It was a sweet spot for us as collectors, and now I can see how lucky we were. I built my first collection on it and learned so much from other collectors who frequented the shops, too.

Like most people, I love the Internet and all it offers. I've bought models from all over the world, but there's something special about walking into a small collectors' shop and being told, "I've just bought these in, I thought you might be interested?" ■

**'I love the Internet and all it offers. I've bought models from all over the world, but there's something special about walking into a small collectors' shop.'**





Est. 1958

# Warwick & Warwick

**Auctioneers and Valuers**

01926 499 031

[www.warwickandwarwick.com](http://www.warwickandwarwick.com)

We hold bi-monthly specialist Toys, Postcards and Cigarette Cards auctions, live on Easy Live Auction, commencing at 10.00 am.

Bids can be placed live on Easy Live Auction, alternatively, call or email us with your commission or telephone bids.

- 21<sup>st</sup> January

- 18<sup>th</sup> March

- 20<sup>th</sup> May

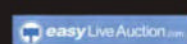
- 15<sup>th</sup> July

- 16<sup>th</sup> September

- 18<sup>th</sup> November



Warwick & Warwick Ltd, Chalon House, Scar Bank, Millers Road, Warwick, England, CV34 5DB  
[info@warwickandwarwick.com](mailto:info@warwickandwarwick.com)





**A**fter the war, there were quite a number of military vehicles, many of which were seen on the country's roads. I had some military toys and enjoyed seeing the real ones. Mostly, they were trucks rather than armoured vehicles. However, when we went on outings through the Dukeries, we passed military areas, and if you were lucky, you might see tanks or armoured cars out on manoeuvres.

The Dinky Toys range had included military models, and in the 1950s, new ones were introduced. In September 1954, the Dinky Toys Armoured Car number 670 arrived with a revolving turret and was finished in military green with Royal Armoured Corps transfers on the mudguards. It had plain black tyres, and on the later models these were treaded and had plastic wheels. The models came in illustrated card end flap boxes, or plain yellow or plain red and yellow ones. In the November 1954 Meccano Magazine, the Dinky Toys News review by the Toyman discusses the military models and says, 'In view of the keen interest in the range of Army Vehicles that collectors generally are taking, I feel sure that these will be welcomed', this referring to the Armoured Car. It continues saying 'Following the introduction of the Centurian Tank, many collectors asked for an armoured car, so that it could make up an effective and realistic armoured column'. The model is illustrated in colour in the 1955 Dinky Toys catalogue and continued in the catalogues until it was eventually deleted in 1971.

In 1973, the model was reissued and was available in France. It now had a plastic arial in the turret, concave wheels with treaded tyres and French tricolour transfers on the mudguards. There was a camouflage net, and the card-end flap box was illustrated with a camouflage section and indicated 'Fabrique en France', despite the model's base plate being marked 'Made in England'. It was only available until 1974.

**BELOW** Dinky Toys Armoured Cars first model, then with plastic wheels no 670, followed by speed wheels and plastic arial as no 676 and with a new base unit now no 667 and described as an Armoured Patrol Car.



**ABOVE** French Dinky Toys Engin Blinde Daimler no. 676 using English casting.

## Armoured Car

DTCA Chairman, **Michael Driver**, picks another vintage favourite from Dinky.

The English model was also sold in America in the gold card and cellophane box, and in other countries in the yellow card cellophane box version.

A further reissued model of 1973, number 676, had a plastic arial and speed wheels with a matt military green finish. This appears in the 1973 Dinky Toys catalogue as a new model. It was in a blister pack and was deleted in 1976. Also, in this year, the model reappeared as number 667 using the previous model's gun turret but with a new body casting and plastic speed wheels. It is shown in the Dinky Toys catalogue of 1976 and was available in a hanging window box before its deletion in 1978.

The Dinky Toys model is based on the Daimler Armoured Car, which had been designed during the Second World War. It was based on the Daimler Scout Car and was fitted with four-wheel drive, four-wheel steering and independent suspension. It continued in service during the 1950s in England and other countries. ■

### The Dinky Toys Collectors' Association

The Dinky Toys military models are collectable and especially the later issues from 1954. They often feature in the DTCA Journal with illustrations. You can find out more or join by visiting the website [www.dtcawebsite.com](http://www.dtcawebsite.com).







I was lucky enough to make a trip that took in several of the larger American car and toy shows in the fall (autumn).

There was so much to see, from familiar items to those not so familiar, and plenty of surprises. Taking the shows in date order, we have:

#### FALL CARLISLE

Carlisle Events is a professionally run organisation that runs some eight or nine large car shows each year, all held on the "Carlisle Fairgrounds", a huge area set aside for outdoor entertainment and sports, on the outskirts of the town of Carlisle, about 20 miles from Pennsylvania's capital city, Harrisburg. The Fall Carlisle show is probably the biggest, incorporating a large classic car auction, hundreds of classic cars on sale by individual vendors, and a huge "fleamarket" for parts, accessories and everything else car-related, including, of course, toys and models. Plenty of specialist

## On the road

### America's great car and toy shows

**Charles Barnett** heads stateside for an autumn tour of America's biggest car and toy shows, from Carlisle and Hershey to Chicago and Allentown, uncovering standout models and memorable finds.

dealers come along to provide a wide variety and, of course, there are plenty more, usually in lesser condition, on the tables of the more general dealers.

The largest and widest variety this time was that of local model dealer Craig Holler, who had taken over virtually the whole of one of the buildings on the grounds, with a massive selection, around the same as a medium-size

British toy fair. From a wide range of 1/64 Hot Wheels and similar, to 1/18 and larger, the variety encompassed a huge stock of 1/24 plastic kits, built and unbuilt, and the "promotional" models of American cars, through American and European diecast like Tootsietoy, Manoil and Renwal, as well as our familiar Dinky, Corgi and Matchbox, to a fine collection of 1/43 handbuilt from





Brooklin, Western Models, Motor City and the like. Something for absolutely everyone (including, I must admit, me).

Another huge display was that of Mark Lewis from Massachusetts, a dealer known for his expertise in plastic models and "promos", but who had diversified big-time into diecast and white metal, with excellent selections of each. Again, I left Mark with my backpack a little heavier and my wallet a little lighter.

Chicago-based Automodello was exhibiting here for the first time and, besides their range of excellent 1/43 and 1/24 resin models, also had a fine selection of pre-owned white metal 1/43s from a collection recently acquired by proprietor Jim Cowen, all at very good prices.

Among the massive quantity of other models on offer at the show was a range I've not seen before of 1/24 solid-cast hot rods, nicely detailed and not expensive, \$15.00 upwards. I didn't see a maker's name, but apparently they are a recent innovation and widely available online.

As ever, a terrific event, well worth a trip on its own, but the following week, there was...



1. Part of Craig Holler's display of 1/64 models at Carlisle. 2. 1/24 resin hot rods at Carlisle. Red is a popular colour! 3. Japanese Bandai toys at Hershey. 4. Unusual Saunders "Sportster" with box at Hershey. 5. Austin-Healeys in all scales at Hershey, along with Barbie in hers! 6. Veteran car doing the rounds at Hershey. 7. Model T Ford in action at Hershey





## HERSHEY

Even bigger than Carlisle, this show is legendary, and rightly so.

The Fall Meet of the Eastern Chapter of the Antique Automobile Club of America, to give it its full name, is almost certainly the biggest car-related marketplace in the world. There are some 7–8000 vendor spaces in the “fleamarket” and around 1000 full-size cars for sale.

Held on the grounds of the Hersheypark entertainment complex, just outside the town of Hershey itself and around 10 miles from Harrisburg, it has an atmosphere all of its own and, incredibly, entry is absolutely free. Pay for car parking, buy an essential programme guide for \$5.00, and that’s it, start walking the aisles. (You’ll cover around 14 miles if you check out every single one, so wear comfy shoes.) It’s the only event I know where genuine veteran cars can frequently be seen trundling around the grounds as their owners give them some exercise at the end of the day.

Naturally, quite a few of the dealers from Carlisle had decamped to Hershey, and there were hundreds more from all over the USA, so plenty of new variety and temptation, in all scales, types and sizes.

Notable items I saw included a fine group of Japanese Bandai tinplate models, including a very fine Triumph TR3A, though a tad pricey at \$195, an early Datsun Bluebird saloon at the same price, and a Toyota Crown at \$225. Another eye-catching line-up on another stall was a group of neat Austin-Healey models, including the large “Barbie” version with Barbie herself, and the lovely Tri-ang 1/24 scale electric version, mint and boxed alongside it. This table also sported a nice group of Corgi models and a fine array of “promos”. An old toy I don’t recall seeing before with its box was a “Saunders Sportster”, a 1950s-style open roadster in plastic, around 1/20 scale, and made in Aurora, Illinois.

As an aside, if you should go to Hershey, you really must see the Friday-only car show in an adjoining showfield, where members bring another 1000 or so of their treasured cars to display and compete for “Best in Class”. The standard of presentation on each and every one is remarkable, and you see cars there that you don’t see anywhere else.

## COUNTRYSIDE TOY SHOW

We travelled some 700–800 miles for this toy show, held around 25 miles west of

Chicago. A medium-size show, it always has a good choice of European diecast and white metal models on offer alongside the more usual older Tootsietoy, Renwal, Hubley etc., and of course the ubiquitous Hot Wheels. One particularly well-priced older item, though, was a tinplate Kingsbury “Golden Arrow” record car. It had one side ponton missing but was otherwise complete with driver, windscreen and all the tyres, and was in very good overall condition. Quite a bargain at \$100, less than half the price I expected to see.

## CHICAGO TOY SHOW

One of the largest and most venerated toy shows in America, this show took place the week after the Countryside one, and the organisers had once again filled all five halls and two outdoor “pavilions” of the Kane County Fairgrounds in St Charles, a western suburb about 30 miles outside Chicago. The show has retained its popularity by moving with the times, and the majority of goods on offer were the currently fashionable Star Wars and character toys, of which I never knew there was such an incredible variety, going back

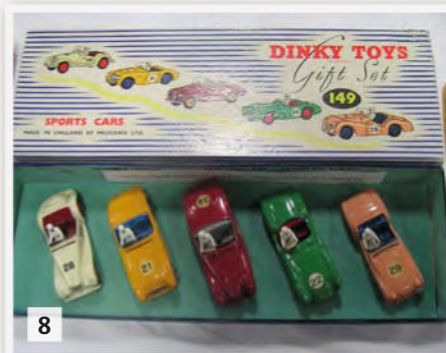




6



7



8

1. Selection of Brooklin Models and others at Countryside. 2. Kingsbury Golden Arrow at Countryside. 3. Part of a room display for the Chicago show. 4. Fine display of tinplate at Chicago. 5. Fine general display at Chicago. 6. Eiffel Tower at Allentown. 7. Taylor & Barrett trolleybus at Allentown. 8. Dinky Sports Cars gift set at Allentown.

to the 1950s and beyond. However, there was still plenty of classic diecast and, at the show, I was pleased to pick up a small group of boxed Dinky cars for reasonable prices from one of the old-established traditional dealers.

A traditional feature of this event is the "room trading" at the hotel in the days leading up to the weekend. Dealers simply open their hotel rooms for visitors to see the frequently comprehensive and complex displays they have set up, and there is generally some very good business done. This year was no exception but, like the show itself, the majority of room traders were those with the character figures and toys.

The show itself opened at 8.00am and closed around 3.00pm, and you needed the full day to get to see everything. It was busy from start to finish and the good thing about its evolving with the fashions meant there were plenty of keen younger, under-30 collectors there, which has to be a good thing for our hobby in general...

#### ALLENTOWN ANTIQUE TOY SHOW

By contrast, and as the name suggests, a more traditional show, held just once a

year, and we're back in Pennsylvania again. Allentown is near the state border with New Jersey and not far from the New York conurbation, so the event attracts customers from that part of America's East Coast, and dealers from all across the country.

Among the high-end items, some were truly spectacular, like a massive travel-agency display model of Paris' Eiffel Tower, which dominated both the tables on which it was offered (it changed hands for a four-figure sum between dealers early in the day), and for Britains enthusiasts, a magnificent diorama comprising the 1937 Coronation Coach of King George VI, complete with all outriders and foot soldiers, against a backdrop of London landmarks, all within a custom-made display case and priced around \$450. Alongside was a boxed State Open Landau set at \$295, two very fine pieces, I thought.

Other notables were a mint boxed Taylor & Barrett trolleybus at \$395, which sold early in the day, and a Dinky "Sports Cars" gift set from the mid-1950s, again mint boxed and around \$600. Another early sale was that of an Italian Mercury Maserati 3500

GT, mint and boxed and complete with its set of suitcases in the boot.

This was priced at \$100.00, about the same as you'd see here. But these were just a few of the more eye-catching items among literally hundreds on offer.

Overall, the level of business was good, and the dealers to whom I spoke at all the shows were generally happy with their sales. Even though things may be evolving and fashions may be changing, there are still plenty of keen collectors and enthusiasts out there.

As you can imagine, a wonderful trip; I saw a lot, learned a lot, met friends old and new, and brought back rather more souvenirs than I should have. It wasn't inexpensive, but it was memorable. If you are able to consider any of these shows, I'd certainly encourage you to go, model collecting in America is alive and well, and quite an experience.

#### MORE DETAILS AND 2026 DATES

Carlisle: [www.carlisleevents.com](http://www.carlisleevents.com)

Hershey: [www.aaca.org](http://www.aaca.org)

Countryside: [www.uniqueeventsshos.com](http://www.uniqueeventsshos.com)

Chicago: [www.chicagotoyshow.com](http://www.chicagotoyshow.com)

Allentown: <https://tinyurl.com/mdmjz9f5>



# PRICE GUIDE

Rounding up the latest toy sales from across the country with a brief visit to specialist auction rooms...



♦ A Wooden Scratch Built Car Transporter Lorry. Although unchecked for completeness condition appears Fair to Good. **Sold for £280, Vectis Auctions, December**



♦ A Minichamps 1:18 scale diecast model, BMW 635 CSi Gubin Sport, as driven by Volker Strycek – DPM Winner 1984. Excellent to Near Mint – model factory wrapped in box, packaging excellent with only minor storage wear. **Sold for £70, Vectis Auctions, December**



♦ AUTOart, a boxed 1:43 Scale 52745 Mad Max 2 “The Road Warrior Interceptor / Enemy Car”. conditions generally appear Near Mint to Mint in a generally Good to Excellent box and rigid Perspex case. **Sold for £160, Vectis Auctions, December**



♦ Danbury Mint, a boxed “James Bond” Aston Martin DB5 1:24 Scale. conditions generally appear Near Mint in a generally Excellent box with internal polystyrene. **Sold for £120, Vectis Auctions, December**



♦ Hot Wheels Elite (Mattel), a boxed 1:43 Scale James Bond “007” BLY26 Aston Martin DB5 “Goldfinger”. conditions generally appear Near Mint in a generally Near Mint box and rigid Perspex case. **Sold for £60, Vectis Auctions, December**



♦ TrueScale Miniatures, 1:43 scale diecast model 1969 Porsche 917 Kyalami 9H – Team Perfect Circle/Coca-Cola, finished in white with sponsor logos. Condition generally appears Mint in clear case and original box **Sold for £45, Vectis Auctions, December**



♦ Tecnomodel Mythos 1:18 scale Ferrari 625 F1, #38 Mike Hawthorn, 1954 Spanish Grand Prix, with figure and presentation case. Condition generally appears Excellent to Excellent Plus in Near Mint box. **Sold for £80, Vectis Auctions, December**



♦ BBR Models 1:18 scale Ferrari 750 Monza #548. Condition generally appears Excellent to Excellent Plus in Near Mint box. **Sold for £110, Vectis Auctions, December**



♦ BBR Models 1:18 scale Ferrari 315 S #535. Condition generally appears Excellent to Excellent Plus in Near Mint box. **Sold for £120, Vectis Auctions, December**



♦ LookSmart 1:18 scale Ferrari 488 GTE. Condition generally appears Excellent to Excellent Plus in Near Mint box. **Sold for £100, Vectis Auctions, December**



♦ GP Replicas 1:18 scale 1977 Ferrari 312T2, Niki Lauda – 1977 World Champion, in display case and black presentation box. Condition generally appears Excellent to Excellent Plus in Near Mint box. **Sold for £220, Vectis Auctions, December**



♦ GT Spirit, a boxed 1:18 Scale GT914 Ferrari F40. conditions generally appear Near Mint in a generally Excellent box with some slight tearing. **Sold for £70, Vectis Auctions, December**



♦ Franklin Mint B11YP95 1999 Road King Classic. Near Mint with certificate/paperwork with inner packing Near Mint outer card box and a Good transit carton. **Sold for £60, Vectis Auctions, December**



♦ Corgi 1:50 scale Limited Edition CC99154 “Moreton C. Cullimore & Son Ltd. – A Dickensian Tale” two-piece set. Condition generally appears Excellent in a Good + illustrated box with light edge and surface wear. **Sold for £45, Vectis Auctions, December**



♦ Corgi Aviation Archive World War II Europe & Africa AA33303 Boeing B-17 Fortress IIA FL459 220 Squadron RAF Coastal Command Ireland 1942. Condition generally appears to be Excellent to Near Mint **Sold for £80, Vectis Auctions, December**



♦ Dinky Toys 103 “Captain Scarlet” Spectrum Patrol Car. Excellent (couple of minor marks) in a Good Plus displays well yellow and red carded picture box. **Sold for £90, Vectis Auctions, December**





♣ Dinky Toys 103 "Captain Scarlet" Spectrum Patrol Car. Good Plus to excellent displays well in a Fair (discoloured) bubble - carded base is Good Plus. **Sold for £120, Vectis Auctions, December**



♣ Dinky Toys 351 "UFO" Shado interceptor. Good Plus with Good inner pictorial stand Only. **Sold for £130, Vectis Auctions, December**



♣ Corgi Toys 1450 "James Bond" Lotus Esprit Little And Large Set. Good to Good Plus in a Good late issue orange, yellow and black window box with front flash. **Sold for £190, Vectis Auctions, December**



♣ Sun Star Routemaster - a boxed 1/24 scale model red double decker Routemaster London Bus. mint or near mint in excellent picture box with internal poly packing pieces. **Sold for £65, British Toy Auctions, December**



♣ Dinky Toys 104 "Captain Scarlet" Spectrum Pursuit Vehicle. Excellent Plus (very small corrosion mark to roof fin, inner pictorial stand is Excellent Plus in a Excellent yellow and red carded picture box with instruction leaflet still a Superb example. **Sold for £180, Vectis Auctions, December**



♣ Corgi Toys 268 "the Green Hornet" Black Beauty. Excellent Plus with a Excellent inner pictorial stand, outer blue and yellow carded picture box is Fair to Good. **Sold for £140, Vectis Auctions, December**



♣ Joyride "James Bond" Lotus Esprit (1/18th). Mint in a Excellent window box. **Sold for £120, Vectis Auctions, December**



♣ Sun Star Routemaster - a boxed 1/24 scale model green double decker Routemaster London Bus. for spares or restoration with damage to sections of the rear and one side, in vg or better picture box with internal poly packing pieces. **Sold for £40, British Toy Auctions, December**



♣ Dinky Toys 105 "Captain Scarlet" Maximum Security Vehicle. Excellent in a Good bubble pack. **Sold for £200, Vectis Auctions, December**



♣ Corgi Toys 497 "The Man From UNCLE" Thrushbuster. Fair still display well with a Good to good Plus inner pictorial stand. **Sold for £160, Vectis Auctions, December**



♣ Joyride - A boxed Austin Powers 1/18 scale diecast model Shaguar E-Type. Good condition with some minor dust, comes in a Good condition window box. **Sold for £60, British Toy Auctions, December**



♣ Sun Star Routemaster - a boxed 1/24 scale model red double decker Routemaster London Bus. in factory sealed excellent or better picture box, contents presumed to be mint. **Sold for £80, British Toy Auctions, December**



♣ Dinky Toys 353 "UFO" Shado 2 Mobile. Good Plus overall (some small chips on edges) in a Fair bubble pack. **Sold for £100, Vectis Auctions, December**



♣ Corgi Toys 258 "The Saint" Volvo P1800 RARE ISSUE. Good Plus still a lovely bright example in a Good Plus yellow and red carded picture box. **Sold for £380, Vectis Auctions, December**



♣ Corgi - A boxed Corgi toys gift set No. 41. Good condition with some minor dust and minor marks, comes in Fine condition box with some minor dust and creasing. **Sold for £170, British Toy Auctions, December**



♣ Dinky Toys 514 Guy (Type 1) Van "Weetabix". Fair still a bright example in a generally Good blue lift off lid box with paper label. **Sold for £320, Vectis Auctions, December**



♣ Dinky Toys 353 "UFO" Shado 2 Mobile. Excellent lovely bright example in a Good to Good Plus window box (slight crushing) with Good Plus inner polystyrene tray. **Sold for £380, Vectis Auctions, December**



♣ Gilbert "James Bond" Tinplate Aston Martin DB5. Excellent Plus beautiful example in a generally Good Plus Lift off lid box with "Thunderball" colour detailed picture. **Sold for £440, Vectis Auctions, December**



♣ Sun Star Routemaster - a boxed 1/24 scale model red double decker Routemaster London Bus. appears mint or near mint in excellent picture box with internal poly packing pieces. **Sold for £70, British Toy Auctions, December**



♣ Dinky Toys 902 (502) Foden (Type 2) Flatbed Truck. Excellent overall (couple of minor marks on flatbed) in a Good to Good Plus blue and white striped lift off lid box. **Sold for £140, Vectis Auctions, December**





♣ **Dinky Toys 903 Foden (Type 2) Flatbed Truck With Tailboard.** generally Good (slightly grubby) blue and white striped lift off lid box. **Sold for £120, Vectis Auctions, December**



♣ **Dinky Toys Military Gift Set.** (RARE) Issue With detachable back)- conditions Fair including blue and white striped lift off lid box. **Sold for £90, Vectis Auctions, December**



♣ **Matchbox Regular Wheels 10b Scammell Scarab Mechanical Horse & Trailer.** Excellent with some small rubs, axles are rusty in Excellent Plus type B1 box very clean crisp box. **Sold for £80, Vectis Auctions, December**



♣ **Matchbox Regular Wheels 32c Leyland "ARAL" Tanker.** Excellent Plus in a Good Plus Type E Colour picture box with correct model instruction illustration. **Sold for £320, Vectis Auctions, December**



♣ **Matchbox Regular Wheels 69b Hatra Tractor Shovel.** Good overall bright example. **Sold for £440, Vectis Auctions, December**



♣ **Matchbox Regular Wheels 31b Ford Fairlane Station Wagon.** Near Mint in Good box - crisp but a little grubby. **Sold for £100, Vectis Auctions, December**



♣ **Matchbox Reproduction Retailers Counter or Shop Window Display Stand.** Near Mint Unboxed, back section can be stored flat. **Sold for £80, Vectis Auctions, December**



♣ **Matchbox Regular Wheels 1a Aveling Barford Road Roller.** Near Mint in Good Plus type B1 box - nice example. **Sold for £140, Vectis Auctions, December**



♣ **Matchbox Regular Wheels 2a Muir Hill Site Dumper.** Excellent in Good box - crisp but a little grubby. **Sold for £80, Vectis Auctions, December**



♣ **Matchbox Regular Wheels 4c Triumph Motorcycle & Sidecar Stannard Code 1.** Near Mint in Excellent box - nice example of model & box. **Sold for £70, Vectis Auctions, December**



♣ **Matchbox Regular Wheels, 7b Ford Anglia.** Mint, nice example, in Excellent box. **Sold for £80, Vectis Auctions, December**



♣ **Matchbox Regular Wheels 27c Cadillac Sixty Special.** Near Mint in Fair box - stained, creased & dealer stamp to side. **Sold for £320, Vectis Auctions, December**



♣ **Matchbox Regular Wheels 27c Cadillac Sixty Special.** Near Mint in Excellent box. **Sold for £140, Vectis Auctions, December**



♣ **Matchbox Regular Wheels 58a BEA Airport Coach.** Excellent in Fair rare box. **Sold for £460, Vectis Auctions, December**



♣ **Matchbox Regular Wheels 22b Vauxhall Cresta.** Excellent Plus in a Good Plus box. **Sold for £220, Vectis Auctions, December**



♣ **Corgi 1/50 diecast model truck issues.** All look to be without fault and complete, in original boxes. **Sold for £85, M & M Specialist Auctioneers, December**



♣ **Corgi 1/50 diecast model truck issues.** All look to be without fault and complete, in original boxes. **Sold for £55, M & M Specialist Auctioneers, December**



♣ **Corgi 1/50 diecast model truck issues.** All look to be without fault and complete, in original boxes. **Sold for £70, M & M Specialist Auctioneers, December**



♣ **Corgi 1/50 diecast model truck issues.** All look to be without fault and complete, in original boxes. **Sold for £65, M & M Specialist Auctioneers, December**



♣ **Lion Toys 1/50 diecast model truck issue.** trucks in the Livery of Scania Nootboom Lowloader. **Sold for £55, M & M Specialist Auctioneers, December**



♣ **DAN Toys diecast model truck.** Excellent in box. **Sold for £75, M & M Specialist Auctioneers, December**



♣ **Scalextric Slot Car. Wizardry on Wheels 1959 Mini 50 Years Boxed.** All appear to be without fault in original boxes. **Sold for £55, M & M Specialist Auctioneers, December**



♣ **Scalextric Slot Car. 1977 ATCC Ford XB Falcons Legends (Limited Edition 3000) Boxed.** All appear to be without fault in original boxes. **Sold for £70, M & M Specialist Auctioneers, December**





♣ **Scalextric Slot Car.** The Classic Collection, Alan Mann Racing Ford Lotus Cortina and Ford Escort (Limited Edition 3000) Boxed. All appear to be without fault in original boxes. *Sold for £90, M & M Specialist Auctioneers, December*



♣ **Ertl 1/12 diecast farm model.** comprising a Ford 8600 Tractor. Displays excellent. *Sold for £55, M & M Specialist Auctioneers, December*



♣ **Autoart 1/18 diecast model.** comprising Porsche 917K. Excellent and secure in box. *Sold for £70, M & M Specialist Auctioneers, December*



♣ **Autoart 1/18 diecast model.** comprising Steve McQueen's Porsche 917K from the movie 'Le Mans'. Excellent and secure in box. *Sold for £100, M & M Specialist Auctioneers, December*



♣ **Minichamps 1/18 diecast model.** comprising Michael Schumachers Jordan Ford 191 - 1991 Belgium GP. Excellent and secure in box. *Sold for £75, M & M Specialist Auctioneers, December*



♣ **EMCO Models 1/43 precision model.** comprising the Jensen FF in white. Excellent with original box. *Sold for £70, M & M Specialist Auctioneers, December*



♣ **Britains 1/32 farm model.** comprising no.9320 Massey Ferguson 135 Tractor. Appears excellent in very good - excellent box. *Sold for £80, M & M Specialist Auctioneers, December*



♣ **Britains 1/32 farm model.** comprising no.9572 Massey Ferguson 135 Tractor with Front Loader. Excellent never removed from box. *Sold for £110, M & M Specialist Auctioneers, December*



♣ **Britains 1/32 farm model.** comprising no.9324 County 1884 Powerfarm Tractor in White, excellent (no fading) in unopened box. *Sold for £120, M & M Specialist Auctioneers, December*



♣ **Britains 1/32 farm model.** comprising no.9598 Ford 7710 Tractor and Rear Digger Set. Excellent and secure in original packaging and box. *Sold for £140, M & M Specialist Auctioneers, December*



♣ **Marge Models 1/32 model.** comprising Scania R500 6 x 2 Tractor Unit (Dark Grey), excellent and secure in excellent box - unopened. *Sold for £90, M & M Specialist Auctioneers, December*



♣ **Corgi Toys Ford Zephyr Estate Car (424).** Example with the later dishd spun wheels. Boxed, minor wear. Vehicle in very good condition, a few very small marks only. *Sold for £60, Wallis & Wallis Auctions, December*



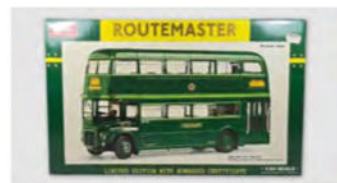
♣ **A rare Corgi School of Motoring Radio Control Car.** Boxed with inner packing, some wear, vehicle very good. *Sold for £70, Wallis & Wallis Auctions, December*



♣ **A rare Spot-On Z Cars Ford Zephyr Six (309).** Boxed, minor wear/creasing/pen marking, window has been replaced, complete with Z Cars badge Vehicle Mint. *Sold for £240, Wallis & Wallis Auctions, December*



♣ **Spot-On Ford Zodiac 100SL (287).** Boxed, minor wear, with picture paperwork. Vehicle very good, minor chips. *Sold for £130, Wallis & Wallis Auctions, December*



♣ **Sun Star 2904: RMC 1453 453 CLT 'The Original Green Line Routemaster Coach'.** Boxed, minor wear. One end flap requires regluing. Mint condition. *Sold for £100, Wallis & Wallis Auctions, December*



♣ **Spot-On Ford Zephyr Six (270).** Boxed, minor wear/damage to one end flap. Vehicle Mint. *Sold for £100, Wallis & Wallis Auctions, December*



♣ **Dinky Toys, 238 Jaguar D Type Racing Car.** Very good in a very good box. *Sold for £50, Lacy Scott & Knight, December*



♣ **Dinky Toys No. 930 Bedford Pallet Jekta van.** Very good in a very good box. *Sold for £180, Lacy Scott & Knight, December*



♣ **Dinky Toys, 908. Mighty Antar with transporter.** complete in the original box, box and model with some wear. *Sold for £200, Lacy Scott & Knight, December*



♣ **Dinky France, 586 Camion Latier 55 Citroen.** Near mint, in a very good box. *Sold for £230, Lacy Scott & Knight, December*





♣ A Hornby 00 gauge locomotive and tender. R.099, 4-6-2 in LNER grey livery 'Silver Fox', in the original box. **Sold for £55, Mendip Auction Rooms, December**



♣ A LGB Lehmann G Scale 2071D 0-6-0 steam tank locomotive. In black livery with red trim, 'Zillertalbahn' 4506. In the original box. **Sold for £95, Mendip Auction Rooms, December**



♣ Hornby-Dublo 00 Gauge 3-Rail boxed 3250 BR SR green Electric Motor Coach Brake/2nd EMU Power Car. very good condition, box is fair. **Sold for £110, Special Auction Services, December**



♣ A Barrie Stevenson/Brian Badger Models kitbuilt 00 Gauge LNWR 1st/3rd Composite Corridor Passenger Coach No 1897. Built and finished to an excellent standard. **Sold for £210, Special Auction Services, December**



♣ A Tri-ang 00 gauge CKD EM2 Electric Locomotive Kit, R388, built, in BR green livery, 27000, in the original box with the instructions. **Sold for £45, Mendip Auction Rooms, December**



♣ A Lehmann LGB G Gauge locomotive, No.2774, 0-4-0, having a green cab and red chassis. **Sold for £55, Mendip Auction Rooms, December**



♣ Hornby-Dublo 00 Gauge boxed 3-Rail late issue 3235 BR green rebuilt West Country Class 34042 'Dorchester' Locomotive and Tender. excellent condition in a very good box. **Sold for £130, Special Auction Services, December**



♣ A Rocar EM Gauge LNWR/WCJS 12-wheel Clerestory Third Class Dining Saloon No 486. built and finished to a very good standard. **Sold for £230, Special Auction Services, December**



♣ A Hornby 00 gauge digital 'Somerset Belle' train set, containing a Train Set containing 0-6-0 Somerset & Dorset Joint Railway blue livery 3F Class Jinty Tank No.24 in the original box with instructions. **Sold for £75, Mendip Auction Rooms, December**



♣ A Mamod T.E.1a Traction Engine. In green livery, with accessories, in the original box with the packaging. **Sold for £120, Mendip Auction Rooms, December**



♣ Limited Edition Wrenn boxed 00 Gauge W2400 BR green Castle Class 7007 'Great Western' Locomotive and Tender. excellent condition in a very good box. **Sold for £170, Special Auction Services, December**



♣ A Willets Scale Models 00 Gauge MSWJS crimson Lake Clerestory 12-wheel Dining/Kitchen Carriage No MS 4, signed Lawrence Goddard Nov 1994, built and finished to an excellent standard. **Sold for £250, Special Auction Services, December**



♣ A Bachmann 00 gauge Local Freight Set, containing a GWR Pannier tank locomotive, three wagons, a controller and lengths of track, in the original box. **Sold for £80, Mendip Auction Rooms, December**



♣ Uncommon Tri-ang TT Gauge T87 BR blue/grey Main Line Composite Coach. in original late issue buffer design box with original tissue and two packing rings, excellent condition. **Sold for £110, Special Auction Services, December**



♣ Premier Kits ML Models and Leisure Castings Ltd 00 Gauge kitbuilt GWR green Dean Single Class 3047 'Lorna Doone' Engine and Tender. very good condition in a good box. **Sold for £110, Special Auction Services, December**



♣ GEM 00 Gauge kitbuilt LNWR lined black Dreadnought Class 2-4-0 510 'Leviathan' Locomotive and Tender. built and finished to a very good standard, in original box. **Sold for £120, Special Auction Services, December**



♣ Hornby-Dublo 00 Gauge Pre-war 3-Rail DL7 boxed LNER black 2690 0-6-2 Tank Engine. Very Good, minor paint loss, box poor. **Sold for £100, Special Auction Services, December**



♣ Will's Finecast 00 Gauge kitbuilt GWR green De Glenn 4-4-2 105 'President' Locomotive and Tender. very good condition in a good box. **Sold for £110, Special Auction Services, December**



♣ Samhonsa Korea for Westside Model Company unpainted brass HO Gauge Class Southern black Class MS-2 Duplex. excellent condition in a very good box. **Sold for £340, Special Auction Services, December**







♣ Precision Scale Co Korea for Iron Horse Models painted brass HO Gauge New York Central grey, 'The Mercury' streamline 4-6-2 Locomotive and tender. excellent condition in a very good box. **Sold for £700, Special Auction Services, December**



♣ Hornby 0 Gauge No.2 4-4-2 Special Tank Loco LNER green. excellent condition in a very good box. **Sold for £220, Special Auction Services, December**



♣ David Andrews (2001) Kit built 0 Gauge 4-6-2 Loco & Tender BR lined maroon Coronation class 'City of Nottingham'. excellent with wooden carrying case. **Sold for £850, Special Auction Services, December**



♣ Bachmann OO Gauge 32-400TF Bo-Bo Intercity livery (ex 25314) Ethel 3 Diesel Locomotive No. 97252. Condition is Near Mint in generally Good but crushed box. **Sold for £60, Vectis Auctions, December**



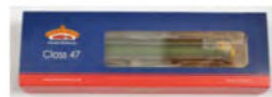
♣ A DJH kitbuilt HO Gauge South African Railways black GMAM Garratt Locomotive. built and finished to a very good standard, in original box. **Sold for £320, Special Auction Services, December**



♣ Hornby 0 Gauge E420 4-4-0 Loco & Tender SR Schools 'Eton'. good condition, unboxed. **Sold for £290, Special Auction Services, December**



♣ Overland Models (Ajin Precision - Korea) 0 Gauge 4-8-4 Streamlined Loco & Tender Norfolk & Western 'J' class. excellent condition in a very good box. **Sold for £550, Special Auction Services, December**



♣ Bachmann Branchline OO Gauge 31-656 Class 47 47256 in BR green livery with full yellow ends (weathered). Conditions appear Near Mint to Mint in Near Mint to Mint packaging. **Sold for £90, Vectis Auctions, December**



♣ Hornby 0 Gauge E320 4-4-2 Loco & Tender GWR lined green 'Caerphilly Castle' No.4073. good condition in a reproduction style box. **Sold for £120, Special Auction Services, December**



♣ A restored Bassett Lowke 0 Gauge LMS 4-6-2 'Duchess of Montrose' 3 Rail Electric 5613/0 Locomotive & tender. overall Good in Fair red presentation box. **Sold for £360, Special Auction Services, December**



♣ River Raisin Models (Boo-Rim Precision - Korea) S Gauge 4-8-2 Loco & Tender Southern Pacific black MT-4 Mountain class. excellent condition in a very good box. **Sold for £680, Special Auction Services, December**



♣ Hornby (China) R2798 (Limited Edition) 4-6-2 BR A4 Class Steam Locomotive No. 60027 'Merlin'. Condition is Near Mint to Mint in Excellent to Excellent Plus box and outer sleeve. **Sold for £100, Vectis Auctions, December**



♣ Hornby 0 Gauge Princess Elizabeth LMS 6201 4-6-2 Locomotive & Tender 20 Volt 3 Rail Electric. overall Good in Fair red presentation box. **Sold for £700, Special Auction Services, December**



♣ Bassett Lowke 0 Gauge BR lined blue 4-6-2 60103 'Flying Scotsman' 3 Rail Electric Locomotive & Tender. overall very good in good box. **Sold for £400, Special Auction Services, December**



♣ Bachmann 31-255DC 6-car Nanking Blue Midland Pullman Diesel Motor Unit. Condition is Near Mint to Mint in Excellent to Near Mint boxes and outer sleeve. **Sold for £220, Vectis Auctions, December**



♣ Heljan OO Gauge 1812 Class 80 BR Rebuilt 18100 Gas Turbine Electric Prototype Diesel Locomotive No. E2001. Condition is Mint in Near Mint box. **Sold for £110, Vectis Auctions, December**



♣ Hornby 0 Gauge No.2C 4-4-0 Special Loco & Tender LNER 'Yorkshire'. excellent condition in a very good box. **Sold for £480, Special Auction Services, December**



♣ Fulgurex 0 Gauge Ref: 2518 0-8-0 SBB/CFF 4/4 Tank Loco. excellent condition in a very good box. **Sold for £260, Special Auction Services, December**



♣ Bachmann 31-318K (Limited Edition) 0-6-0 Great Central Robinson J11 Class Steam Locomotive No. 316. Condition is Near Mint in Good to Excellent box and outer sleeve. **Sold for £170, Vectis Auctions, December**



♣ Bachmann EFE Rail Ref E84005 Class 58 Railfreight Diesel Locomotive No. 58011. Condition is Mint in Near Mint box. **Sold for £130, Vectis Auctions, December**



♣ HRCA Hornby Dublo (Limited Edition) refurbished 3-rail 4-6-2 BR A4 Class Steam Locomotive No. 60014 'Silver Link'. Condition is Near Mint to Mint (rear pony fixing screw is incorrect) in Near Mint box. **Sold for £280, Vectis Auctions, December**





♣ Hornby Dublo 3-rail 3235 4-6-2 BR West Country Class Steam Locomotive No. 34042 "Dorchester". Condition is Excellent to Excellent Plus in Good to Good Plus box. **Sold for £120, Vectis Auctions, December**



♣ Heljan O gauge BR Class 47/4 diesel locomotive. The locomotive appears in excellent condition, supplied in its original Heljan blue box with foam inserts and user manual. **Sold for £240, Vectis Auctions, December**



♣ A boxed Classic Collections limited edition C4 'Duchess of Buccleuch' in LMS photographic grey livery. Mint, box near perfect, complete with certificate. **Sold for £340, Minster Auctions, December**



♣ A refurbished Hornby Dublo 3-rail EDL18 2-6-4T Locomotive expertly finished in satin BR blue No.80143. Excellent plus condition. **Sold for £100, Minster Auctions, December**



♣ Hornby Dublo 3-rail 3235 4-6-2 BR West Country Class Steam Locomotive No. 34042 "Dorchester". Condition is Excellent to Excellent Plus in Good Plus box with Beatties label to lid. **Sold for £140, Vectis Auctions, December**



♣ A boxed Hornby Dublo EDL7 LNER 0-6-2T. mint condition in an excellent box. **Sold for £95, Minster Auctions, December**



♣ A boxed Hornby Dublo 2250 EMU. Mint, showing no signs of use. Box superb, slight tape residue, complete with instructions. **Sold for £360, Minster Auctions, December**



♣ A boxed Jodel BR Bayer-Garrett Locomotive. Excellent plus, complete with box and certificate No.29. **Sold for £580, Minster Auctions, December**



♣ Triang Railways R257 Bo-Bo Double Ended Transcontinental Overhead Electric Locomotive in green and orange. Condition is generally Excellent in Good box. **Sold for £130, Vectis Auctions, December**



♣ A boxed Hornby Dublo D1 SR Goods Brake Van. mint condition in an excellent box. **Sold for £280, Minster Auctions, December**



♣ A boxed Hornby Dublo EDL1 'Sir Nigel Gresley'. superb example showing no signs of use. Box in superb condition as it left the factory. **Sold for £700, Minster Auctions, December**



♣ A Peakco Hornby Dublo Never Was GWR 56XX 0-6-2T in matt black livery commissioned by Michael Foster. unused in Near perfect box. **Sold for £620, Minster Auctions, December**



♣ DJH OO Gauge Kitbuilt K71 4-6-0 LMS Large Boiler Claughton Steam Locomotive No. 6004. Condition is generally Excellent (unchecked for completeness) in Fair box. **Sold for £120, Vectis Auctions, December**



♣ A boxed Hornby Dublo 3235 'Dorchester'. mint condition in an excellent box. **Sold for £260, Minster Auctions, December**



♣ A boxed Hornby Dublo pre-war EDL7 SR 0-6-2T. superb example in mint condition, no signs of fatigue, pick-ups show slight use. **Sold for £1,600, Minster Auctions, December**



♣ A boxed Hornby Dublo Export 2306 black 0-6-0T with NPC couplings and red plastic buffers. mint condition in an excellent box. **Sold for £95, Minster Auctions, December**



♣ A boxed Hornby Dublo EDL2 C.P.R. Locomotive and Tender. mint condition in an excellent box. **Sold for £420, Minster Auctions, December**



♣ Nu-Cast OO Gauge Kitbuilt 4-4-0 BR Pickersgill Steam Locomotive No. 54470. Condition is Near Mint (unchecked for completeness) in Excellent box. **Sold for £160, Vectis Auctions, December**



♣ A boxed Classic Collections limited edition C43 E1/6 0-6-2T Locomotive. Mint, box near perfect, complete with certificate. **Sold for £500, Minster Auctions, December**



♣ A boxed Hornby Acho 6390 BB12.061 electric Locomotive. mint condition in an excellent box. **Sold for £95, Minster Auctions, December**



♣ A finescale 4mm OO gauge kit built Beattie Well Tank 2-4-0T Locomotive in lined brown livery. finished to an exceptionally high standard with superb paintwork. **Sold for £200, Minster Auctions, December**





♣ **A BUILT LEGO TECHNIC ROUGH TERRAIN CRANE.** appears complete although not checked for missing parts, great condition. *Sold for £60, Richard Winterton Auctioneers, December*



♣ **A BUILT LEGO GHOSTBUSTERS ECTO-1 VEHICLE.** appears complete although not checked for missing parts, great condition. *Sold for £90, Richard Winterton Auctioneers, December*



♣ **A BOXED LEGO IDEAS #015 'THE BEATLES YELLOW SUBMARINE' MODEL.** ppears complete but not checked if all blocks included, instructions inside the box, box in good condition. *Sold for £120, Richard Winterton Auctioneers, December*



♣ **Lego Modular Buildings Collection no.10312, Jazz Clubset.** has been previously assembled, but complete with instruction booklet in very good to excellent original box. *Sold for £110, M & M Specialist Auctioneers, December*



♣ **A BUILT LEGO TECHNIC HEAVY DUTY TOW TRUCK.** appears complete although not checked for missing parts, good condition. *Sold for £60, Richard Winterton Auctioneers, December*



♣ **A BOXED CORGI 50TH ANNIVERSARY VINTAGE GLORY OF STEAM GALLOPERS.** appears to have been on display due to dust on model, not tested for working condition. *Sold for £120, Richard Winterton Auctioneers, December*



♣ **Lego Harry Potter Set no.71043 Large Hogwarts Castle.** set has been previously assembled, but complete with instruction booklet in very good to excellent original box. *Sold for £160, M & M Specialist Auctioneers, December*



♣ **Lego Batman The Animated Series no.7627 boxed and sealed.** excellent with minor scuffs. *Sold for £190, M & M Specialist Auctioneers, December*



♣ **A BUILT LEGO TECHNIC LAND ROVER DEFENDER.** appears complete although not checked for missing parts, great condition. *Sold for £60, Richard Winterton Auctioneers, December*



♣ **A BOXED VINTAGE LEGO BETA 1 COMMAND BASE.** unknown if complete, but includes instructions, base board, additional green base board. *Sold for £50, Richard Winterton Auctioneers, December*



♣ **Lego Icons Set no.10326 Natural History Museum.** set has been previously assembled, but complete with instruction booklet in very good to excellent original box. *Sold for £170, M & M Specialist Auctioneers, December*



♣ **Lego Harry Potter Set no.76419 Hogwarts Castle and Grounds** boxed and sealed. excellent. *Sold for £95, M & M Specialist Auctioneers, December*



♣ **A BUILT LEGO TECHNIC MACK ANTHEM TRUCK.** appears complete although not checked for missing parts, great condition. *Sold for £60, Richard Winterton Auctioneers, December*



♣ **A BUILT LEGO TECHNIC CAR TRANSPORTER.** appears complete although not checked for missing parts, great condition. *Sold for £60, Richard Winterton Auctioneers, December*



♣ **A BOXED LEGO THE HOBBIT BATTLE OF THE FIVE ARMIES BUILDING BLOCK SET.** contents not checked for completion. *Sold for £80, Richard Winterton Auctioneers, December*



♣ **Lego Modular Buildings Collection no.10297 Boutique Hotel.** set has been previously assembled, but complete with instruction booklet in very good to excellent original box. *Sold for £130, M & M Specialist Auctioneers, December*





♣ **Lego Icons Set no.10335 The Endurance.** Set has been previously assembled but this historic vessel comes complete with a stand, nameplate and instruction booklet. Very good to excellent box. **Sold for £170, M & M Specialist Auctioneers, December**



♣ **The Fall Guy - Arco - A boxed vintage The Fall Guy Fast Shot Target Action Game # 1402.** It appears in Very Good condition in its Fair original box with some storage wear. **Sold for £55, British Toy Auctions, December**



♣ **Action Man - Captain Zargon - A vintage Captain Zargon figure with a stand and a reproduction box.** he figure appears in Very Good condition overall with fingers intact, his weapon is not original. **Sold for £50, British Toy Auctions, December**



♣ **Action Man - Space Ranger - A vintage brown flock hair Eagle Eye Action Man figure in Space Ranger outfit with a stand and a reproduction box.** The figure appears in Very Good condition overall with reproduction gripping hands fitted. **Sold for £55, British Toy Auctions, December**



♣ **Lego - Star Wars - A boxed Lego Star Wars Death Star # 10188.** The condition of the bricks contained within the unassociated plastic bags appears Very Good. The Vendor appears to have marked some of the bags with the relevant page numbers from the instruction book. **Sold for £240, British Toy Auctions, December**



♣ **Action Man - Space Ranger - A vintage blonde flock hair Eagle Eye Action Man figure in Space Ranger outfit with a Battle Pack and Laser.** The figure appears in Very Good condition overall, the hands appear to be replacements, he also comes with a display stand. **Sold for £40, British Toy Auctions, December**



♣ **Star Wars - Kenner - A vintage carded Kenner Star Wars 'Rebel Commando' 3 action figure on unpunched ROTJ 77A back.** The figure appears to be in Mint condition. **Sold for £60, British Toy Auctions, December**



♣ **Star Wars - Kenner - A vintage carded Kenner Star Wars 'Admiral Akbar' 3 action figure on punched ROTJ 65A card.** he figure appears to be in Mint condition. **Sold for £70, British Toy Auctions, December**



♣ **Star Wars - Promotional - A rare life size R2-D2 display model from the time of the cinema premiere of the New Hope movie which stands 100 cm tall.** It would benefit greatly from dusting and some reassembly with adhesive where the original slot together assembly fittings have become loose. **Sold for £100, British Toy Auctions, December**



♣ **Trendmasters - Lost In Space - A boxed 1997 dated Robot B9.** appears Near Mint, it is a little dusty from display, the box has some storage creases. **Sold for £50, British Toy Auctions, December**



♣ **Star Wars - A boxed vintage The Empire Strikes Back AT-AT All Terrain Armoured Transport.** it appears Fair overall, unchecked for completeness and the box is Fair with storage wear. **Sold for £110, British Toy Auctions, December**



♣ **Star Wars - A boxed vintage Land Speeder # 38020.** The model appears in Very Good condition overall, would benefit from cleaning, unchecked for completeness. The box is Fair to Good with a tear on one end flap. **Sold for £100, British Toy Auctions, December**



♣ **Star Wars - A boxed vintage Return Of The Jedi Rebel Transport Vehicle.** he model shows some signs of age and use and appears in Good condition overall, unchecked for completeness. **Sold for £50, British Toy Auctions, December**



♣ **Star Wars - A boxed vintage Return Of The Jedi Millennium Falcon.** It appears Fair to Good overall, unchecked for completeness. **Sold for £400, British Toy Auctions, December**



♣ **A Tri-ang tinplate 'Puff Puff' push along train.** The red body numbered '73000', length 45cm. **Sold for £24, Mendip Auction Rooms, December**



♣ **A Tucker and Wather tinplate carousel.** with 3 modern Herman teddy bears. For repair. **Sold for £30, Key Fine Art Auctioneers, December**



♣ **A Wilescos working model of an early Magirus steam driven self-propelled fire engine.** Tinplate frame and wheels painted red with brass boiler, flywheel, cogs and piping. Complete with hoses and 4 fireman. **Sold for £190, Wallis & Wallis Auctions, December**





♣ **A KO YOSHIYA TINPLATE CLOCKWORK ROBOT.** complete and in fairly good condition with only very minor paint loss, marking and wear. *Sold for £60, Richard Winterton Auctioneers, December*



♣ **Burnett tinplate and clockwork open back truck.** comprising red and black body with fixed key mechanism and black tinplate wheels, additional lead driver fitted with barrel load added. *Sold for £260, Lacy Scott & Knight, December*



♣ **After Heyde Lead Painted figure set and tinplate boat.** 50mm painted set of solid blue jacketed 4 sailor figures, with white steering man and admiral. *Sold for £25, Lacy Scott & Knight, December*



♣ **Dinky Toys Pre-War No.43 "RAC" Set.** comprising of Motorcycle with side car black, blue, white wheels, "RAC" tinplate Hut and 2 x Figures, housed in the original blue card box with card insert. *Sold for £230, Lacy Scott & Knight, December*



♣ **Schuco No.1073 Ferrari Formula 2 racing car.** housed in the original card box, box with end flaps missing. *Sold for £200, Lacy Scott & Knight, December*



♣ **French Dinky, 60B Potez 58.** yellow diecast body with tinplate wings, wings are finished with a grey trim. *Sold for £25, Lacy Scott & Knight, December*



♣ **Lincoln International plastic and battery-operated model of a Lotus Indianapolis Racing Car.** housed in the original card box. *Sold for £10, Lacy Scott & Knight, December*



♣ **An early 20th century Bing of Germany tinplate grain grader/chute.** finished in maroon and yellow with a hand-operated handle, suitable to be run from a steam engine, working order. *Sold for £120, Lacy Scott & Knight, December*



♣ **Arnold tinplate steam workshop toy.** comprising of tinplate base with 4 workers operating various tools, powered via a hand-operated dynamo-style mechanism, working order. *Sold for £75, Lacy Scott & Knight, December*



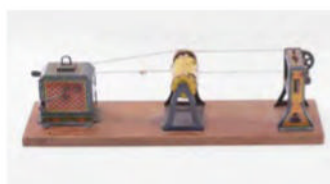
♣ **Dinky Toys Pre-War No.45 tinplate Garage.** green, cream, and orange building with green doors, overall in very good condition. *Sold for £100, Lacy Scott & Knight, December*



♣ **Louis Marx tinplate model of a crawler tractor.** comprising silver body with black tracks, fixed key mechanism. *Sold for £30, Lacy Scott & Knight, December*



♣ **Early 20th century Doll Et Cie tinplate.** hand-operated well, tinprinted and decorated in shades of green and red, working example. *Sold for £100, Lacy Scott & Knight, December*



♣ **Hess tinplate steam workshop.** comprising Dynamobil tinplate dynamo with on/off switch, powering 2 workshop line shaft accessories, working example. *Sold for £55, Lacy Scott & Knight, December*



♣ **A Chad Valley Weekin No.502 Guy van.** comprising green body with tinplate black doors and Guy Motors Ltd livery, housed in the original box. *Sold for £150, Lacy Scott & Knight, December*



♣ **CIJ of France Alfa Romeo P2 racing car.** repainted and altered Alfa Romeo insignia to the front of bonnet, restoration marks to the base plate due to heavy corrosion that is still visible underneath. *Sold for £2,800, Lacy Scott & Knight, December*



# eBuys

From collectables of the future to old favourites, eBay always manages to produce some amazing finds... and even more amazing prices!



**Item:** Tekno Like Wsi Irish Bullnose Scania In The Livery Of Hunky Dory's.  
**Condition:** Brand new, unboxed.  
**Sold for:** £157.08 (7 bids)



**Item:** Tekno Like Wsi Irish Scania 143 In The Livery Of Joe Gwynne From Ireland.  
**Condition:** Brand new, unboxed.  
**Sold for:** £172.30 (9 bids)



**Item:** Moko Lesney Matchbox Series Diecast Model No74 Mobile Canteen  
**Condition:** In original box, in very good condition.  
**Sold for:** £220.00 (26 bids)



**Item:** 1/12 CMC Ferrari Dino 156 F1 1961 No.4 Red Diecast model car.  
**Condition:** In a very good condition, unboxed.  
**Sold for:** £1,047.10 (34 bids)



**Item:** 1/18 Almost Real RUF CTR Yellow bird Porsche 911 Turbo Diecast model car.  
**Condition:** Excellent condition, and in original box.  
**Sold for:** £236.78 (16 bids)



**Item:** Corgi Aviation P-51D Mustang Flight Line Pilot Ground Crew US34405.  
**Condition:** Mint condition with excellent box.  
**Sold for:** £167.09 (3 bids)



**Item:** Trucker Tim Scania V8 Topline Limited Edition WSI 1/50 Scale Diecast Model.  
**Condition:** Brand new and in original box.  
**Sold for:** £397.58 (19 bids)



**Item:** Corgi Toys, 462 Commer Van Promotional issue.  
**Condition:** rare, Original, and in its original box.  
**Sold for:** £337.00 (28 bids)



**Item:** 1:18 Scale Autoart Pagani Zonda R Nurburgring Lap Time Record Edition.  
**Condition:** Excellent condition, and in original box.  
**Sold for:** £475.90 (13 bids)





**Item:** Komatsu PC4000 Backhoe Excavator 1/50 Diecast Model.

**Condition:** Brand new in box.

**Sold for:** £338.20 (14 bids)



**Item:** Marx Tin Wind Up Toy Popeye Express, 1935.

**Condition:** great condition considering age, slight age wear and tear to tin body, unboxed.

**Sold for:** £388.37 (1 bid)



**Item:** Dinky Space 1999 Eagle Transporter.

**Condition:** Good condition, slightly damaged box, but original box.

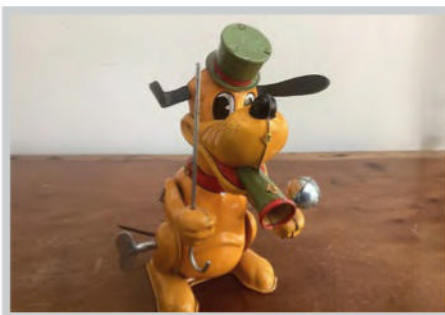
**Sold for:** £156.00 (20 bids)



**Item:** Vintage Disney Mickey Mouse/Donald Animated Talking Wall Clock.

**Condition:** Excellent condition, in original box.

**Sold for:** £185.90 (8 bids)



**Item:** Vintage Marx Disney Pluto The Drum Major 1950s.

**Condition:** working condition, small scratches.

**Sold for:** £193.82 (22 bids)



**Item:** Disney Polly Pocket Daisy's Boutique 1995.

**Condition:** Excellent Used Condition with ALL Three Characters and ALL Four Plastic Outfits.

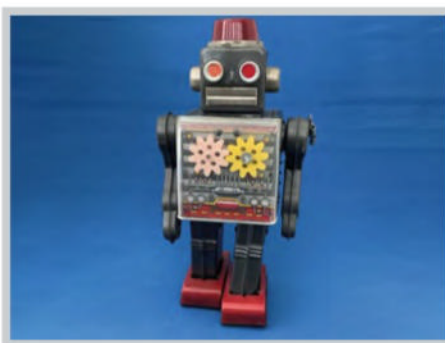
**Sold for:** £136.00 (24 bids)



**Item:** Tinplate Battery-Operated Circus Lion.

**Condition:** Excellent condition with minor playwear.

**Sold for:** £225.00 (23 bids)



**Item:** Vintage 1960s Japanese Robot Horikawa Gear Robot Tin Plate Wind Up Robot Working.

**Condition:** Great condition, minimal rust.

**Sold for:** £411.64 (5 bids)



**Item:** Vintage Tinplate Clockwork Miss Bruin The Typist, Kanto Toys.

**Condition:** In excellent used working condition.

**Sold for:** £225.00 (34 bids)



**Item:** Triang MG Magic Midget Tin Plate Toy Car.

**Condition:** Good condition, front left wheel is damaged.

**Sold for:** £745.99 (15 bids)



**Item:** Dinky Toys AEC Double Decker Bus Dunlop.

**Condition:** Rare solid cream colour, visible rusting, fair condition overall.

**Sold for:** £175.00 (20 bids)



**Item:** Question Mark cast iron Fokker C2-A.

**Condition:** From the 30's. White rubber wheels have crazing, very good original paint.

**Sold for:** £685.25 (39 bids)





1

# Mattel's Brick Shop Elite Series Mercedes-Benz 300 SL

**L**et's face it: Mattel's earlier stint with Mega Bloks is best forgotten. One of those misjudged moments that should have quietly been swept under the carpet. LEGO has long dominated the modular brick-building world, and for good reason. Mega Bloks evolved alongside it, focusing on licensed themes, but it was never in a position to challenge LEGO's crown. Now, however, Mattel clearly wants a slice of the premium brick-build model market and has responded with a trio of new ranges aimed directly at LEGO's territory.

We took the Elite Series 1:12-ish Mercedes-Benz 300 SL from The Brick Shop (TBS) to see how this ambitious newcomer measures up against the established benchmark of the LEGO Icons range.

TBS's 300 SL sits in interesting company. To give it proper context, we compared it not only with TBS's own interpretation of the Gullwing but also the LEGO Icons Porsche 911. Different eras, different design philosophies, and both proven yardsticks for premium brick-based display cars. With the growing popularity of high-quality MOCs, LEGO's approach in recent years has been to release licensed versions of iconic silhouettes with support from the manufacturers. Mattel has followed a similar strategy, drawing on its extensive licensing portfolio from the Hot Wheels universe, which already boasts an

Premium vehicle collecting now reaches beyond diecast. **Keith D'Souza** reviews Mattel's Brick Shop Elite Series Mercedes-Benz 300 SL.

envious list of automotive partners.

The 300 SL set itself is a faithful recreation of Rudolf Uhlenhaut's masterpiece. TBS hasn't shied away from employing bespoke moulds, a route LEGO avoids unless absolutely essential, to preserve the authenticity of the design. The instructions follow the familiar step-by-step format, mercifully free from guesswork. From the moment we opened the numbered bags, any doubts quickly evaporated. The elements look and feel remarkably similar to LEGO, and as the build progresses there's the same reassuring click-and-lock with every connection. Mattel has clearly invested heavily in the quality of the brick system, and it shows.

Where TBS really shifts the game is with its use of metal parts. These cast elements, such as the three-pointed star, wing mirrors and wheel hubs, are pieces that plastic simply cannot replicate with the same finesse, adding a subtle but undeniable premium feel to the finished model. Over roughly ten hours of building, less for seasoned veterans, the experience stays consistently smooth: follow, click, lock, move on. Bespoke elements and unique colour palettes elevate the level of detail, and there's

a generous surplus of extra pieces in case one goes astray.

The steerable front wheels add poise, the gullwing doors function well, if slightly delicate, and the rear wheel arches require gentle handling. The engine and interior are replicated with style and finesse, but the pièce de résistance is the bonnet release mechanism. Smartly designed, executed flawlessly, and unlike anything we've seen in a LEGO set to date.

So how does it compare to the LEGO Icons Porsche 911? Surprisingly closely. Both are superb display pieces with strong presence and thoughtful detail, but TBS edges ahead in several key areas. LEGO's attempt to replicate the Porsche's Fuchs wheels using a generic five-spoke rim, a part previously used on the Ford Mustang, feels like a compromise born from parts-bin convenience. In contrast, TBS's specially fabricated Mercedes-Benz rims are spot-on, slide into place effortlessly, and elevate the overall model.

Inside, the 300 SL's dashboard is smooth, flowing and beautifully proportioned. The LEGO 911's dash, by comparison, looks chunkier and far more generic. These small touches highlight where TBS has invested





**1. You would be hard pressed to differentiate between Mattel's elements and LEGOs.**

extra care, and where LEGO's modular heritage sometimes limits accuracy.

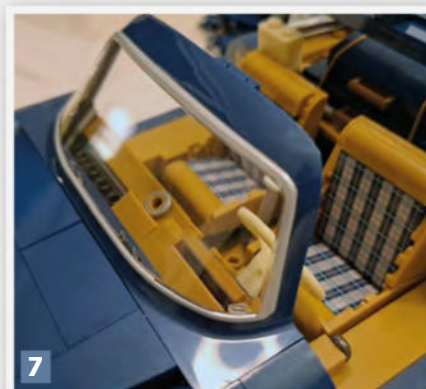
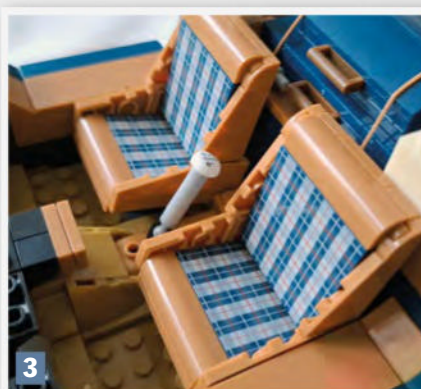
TBS does offer room for customisation. Optional elements allow builders to convert the standard Gullwing into a racing variant inspired by the 2018 IWC Race Team Silverstone car, a thoughtful bonus for those who enjoy modifying or displaying multiple configurations.

Not everything hits the mark. The plastic parts bags feel excessive in an era when LEGO is moving steadily towards fully paper-based packaging. Mattel had an opportunity to mirror that shift and missed it. The 'exclusive' Hot Wheels miniature included with the set, while nicely finished, adds little real value. It doesn't feel premium enough and is essentially a dressed-up mainline casting with opening doors. Once again, it reinforces that Mattel's Premium 1:64 efforts still lag behind the likes of Tarmac Works, Mini GT and AutoArt.

Taken as a whole, the 300 SL marks a confident debut for TBS. We began sceptical but came away genuinely impressed by the accuracy, detailing, build quality and use of metal components, not to mention the price, which undercuts the LEGO Icons Porsche 911 by £13. LEGO hasn't been dethroned, but it's certainly taken a sharp jab to the ribs. In the realm of premium-scale vehicle builds, The Brick Shop's arrival is impossible to ignore. If TBS maintains this standard, LEGO would do well to glance over its shoulder. There's a new contender in town.

## VERDICT

TBS's Mercedes-Benz 300 SL is a triumph. Stunning detail, smart engineering and metal accents combine to put LEGO firmly on notice. 9/10 ■



**2.** You can tell the difference between the bespoke parts on the Merc and the standard bin parts on the Porsche – the former looks a lot better in places due to this.

**3.** The detailed interior works very well – the flat plate tartan elements help re-create the texture of the upholstery well. **4.** Sticker free – the printed flat plate elements to create the dashboard elements are superb – no frustrating alignment stress! **5.** Both models have opening features, but somehow TBS Merc does it slightly better... **6.** Simple use of parts creates the 3.0-litre straight-six SOHC with minimalistic detail. **7.** No fiddly hinged parts needed – the bespoke windscreen part fits the car beautifully – LEGO take note...



**T**refores Mouldings (generally referred to as Tremo) was one of the very few toy manufacturing companies to settle in Wales. In this instance, 1937 was the founding year, and the guiding light behind the manufacture of model ships in 1/2000 scale was one F. Winkler, himself a refugee from Hitler's Germany. (It's interesting to reflect on how many British manufacturing companies owed their origins to someone who settled on these shores). The founder needed little prompting when it came to subject matter, having worked for German model manufacturer Wiking.

Like many companies of this era, its production was put on hold during the global conflict, but on the resumption of peace in 1945, the factory was once again in action. Sadly, though, its days were numbered – and 1946 saw its demise.

The world of diecast shipping is somewhat narrow when compared to that of the diecast vehicle, and its clientele is proportionately smaller. All that said, there was (and indeed still is), an interest in scale model ships and back in the 1930s, the choice was pretty limited. The Tremo output hasn't weathered the test of time too well, I feel: the models are a little crude when viewed today, although they were well painted and featured movable turrets. They also lent themselves to sets, a number of which were marketed.

For its part, Lines Brothers, with its Tri-ang Minic label, started to populate the shipping lanes in 1958/9, and quickly proceeded to monopolise the marketplace with ships, tugs, submarines, aircraft carriers and the all-important dockside addenda. Quality was much better than that of Tremo (separate plastic parts helped here), and the range expanded until a factory fire intervened in 1964. Revived by Hornby in the 1970s, the toys again enjoyed popularity, although production was now based in Hong Kong. Yet another change of ownership occurred in 2003, with Modern Minic Ships becoming the new moniker.

Tri-ang Minic's first series (prior to the factory fire) are still plentiful today, and the bonus of the various dockside and quayside accessories has doubtlessly brought more enthusiasts into the arena.

#### A COLLABORATIVE EFFORT

Unique Toys (or UT Models, as it became better known) was an active company in the 1980s and 1990s.

From what I've unearthed, it was the result of a collaboration involving Unique Toys (of Hong Kong), Paul's



# A-Z of collecting

**Alwyn Brice** lays the letter T to rest and looks beyond vehicular transport to the rolling deep.

Model Art (the Minichamps link) and Gateway Global (the parent company of manufacturer Autoart).

Model cars in 1/18 scale was its stock in trade, although UT did have associated brands, such as the 1/64 scale MicroChamps and MiniChamps 64.

From the start, the focus was on high-quality, detailed models; as time has passed, so these have now begun to appeal to collectors looking for something less mainstream. In consequence, prices have remained firm. Track cars, road cars and rally cars are all to be found within the range and indeed some are very eye-catching because of their livery.

Opening features such as doors, bonnets and boots have been incorporated, and whilst interior detailing is good, the only drawback to these models is that of the hefty, unrealistic

door hinges. Alas, UT wasn't alone in committing that fault; coming up with a more accurate but probably less robust solution would have entailed extra investment – and possibly disgruntled customers, should a door have parted company with the bodywork.

Auction sites are your best hunting ground for these miniatures, but note that prices can vary wildly.

#### FOR VALOUR (Or valor, as our American cousins would have it).

Forces of Valor is one of the ranges that were marketed under the Unimax banner, which really got into its stride just after the turn of the millennium. I say "was" because the company was taken over around 2016; production of its mainstays, namely military models, did continue,





2



3

1. Lovely boxed set from Tremo has survived the years, despite everything
2. I have fond memories of the BMW M3 in Dakar yellow. This is the UT model
3. If you like colourful, then UT's Porsche 911 with its racing livery will fit the bill
4. Tremo aircraft carrier with colourful box art

but it seems that insofar as the collector is concerned, it's the earlier output that appeals more.

Producing tanks, soft skins, aircraft, ships and even figurines, Unimax sought to do things differently from the start. Models were generally diecast with plastic parts and pre-painted, but the pre-painting wasn't limited to a single colour or dual composition, like competitors, for here we have realistically camouflaged and weathered vehicles, all ready for that diorama display. Add to this the evident attention to detail, and you are confronted with a very addictive

5. Tremo's waterline model of HMS Sydney
6. Still around! Shop-fresh, unopened harbour set with ships, from Tri-ang Minic
7. A busy superstructure evident on this Unimax model of the ill-fated Bismarck
8. Stupendous amount of detail on the large (1/16) scale Tiger tank from Unimax

range, which I feel will gain even more in popularity as the years pass. Of course, you need to be keen on military subjects, especially those relating to World War II; but Unimax also covered the conflicts in Iraq and Afghanistan. In terms of scale, the traditional 1/72 is served, but there are also choices in 1/32 and larger.

Another Chinese company (offices were opened in the UK at one point), the quality here is high and, thanks to the careful application of exterior detailing (see the sandbags on tanks for protection, or detachable vehicle accessories), they stand out in a crowd. This is particularly



4



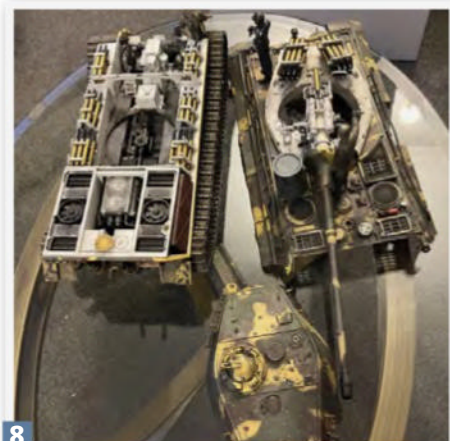
5



6



7



8

the case with the 1/16 scale models, which feature breathtaking amounts of interior detail. You can even find German tanks retailed in wooden packing crates... Don't expect these latter to come cheap, though! There's an interesting range of 1/72 aircraft from the Second World War, and if ships are your thing, then how about a Chinese aircraft carrier, complete with a plane taking off, in 1/700 scale? ■



In 1959, Barbara and Elliot Handler, founders of Mattel Inc, launched their Barbie doll, which was such a success that it was quickly followed by various accessory items, among them an open-topped Austin Healey 3000 in 1962. This proved to be the first of a long line of vehicles driven by Barbie.

The sporty note struck by the choice of a Healey was sustained over the years that followed with many other European and American performance cars. One early offering was a Mercedes Sports, not quite as well-proportioned or realistic as the Austin Healey, as it seems to incorporate styling cues from both the 190SL and 300SL models. Much better were the Porsche 911 of the 1990s (complete with working lights, too), the Porsche Boxster which had a retracting hood and especially the 1987 Ferrari 328, possibly the most accurate of her fleet in model terms.

Most of all, though, Barbie liked that most glamorous of all American sports cars, the Corvette. She drove many of them, carrying various names like the 'Silver Vette' which looked relatively restrained – unlike the 'Star Vette' of 1976 which, with its gaudy decals and purple finish, looks a bit like a Hot Wheels car on steroids! Boyfriend Ken wasn't forgotten, either: he got a blue 'Dream Vette' complete with luggage rack and safety harness.

But Barbie didn't just drive convertibles. Being in the fortunate position to enjoy a life of leisure, she had access to a variety of other vehicles, cleverly designed to appeal to the tastes of the target market. What little girl, for example, doesn't love horses? Barbie had her own horse (called Dallas) and the 'Western Barbie' set consisted of a Jeep and horse trailer which, with a total length of nearly three feet, made up quite an impressive ensemble. Of course, the doll and horse were not included, and those who possessed one or other of these would certainly want the complete series, all of which increased sales.

Also chosen for their play value rather

**TOP** Barbie's Jaguar XJS is quite a good likeness of the real thing. (Photo: Vectis Auctions)

**BELOW LEFT** The Western Barbie set.

**BELOW RIGHT** The Corvette from the 'Barbie' movie.

than simply as vehicles were the numerous camping cars. Though flat and boxy in appearance, the 'Country Camper' was brightly coloured and allowed for imaginative play through its opening panels, interior fittings, awning, folding stools and so on. Then there was the 'Star Traveller Motor Home' of 1976, inspired by a GMC prototype. This enormous (three feet long) six-wheeler could accommodate several people (or rather dolls!) and was generously supplied with interior fittings so that in terms of amusing a child it was almost like a dolls' house on wheels. This was featured on an American television advertisement which excitedly explained how Barbie "fixes dinner in the kitchen, gets the dishes out and sets the table", so she certainly had a domesticated side to her!

The transport theme continues for today's girls, and the ageless Barbie has more recently found herself at the wheel of modern cars like the Volkswagen New Beetle and the Fiat 500. Now, with the launch of a Barbie film, things have, in a sense, come full circle, for the vehicle chosen for this was a 1956 Chevrolet Corvette finished – naturally – in pink. Battery-powered via a remote-control handset, this retails at anything between £60 and £90.

Over the last sixty or so years, Barbie's driven everything from glamorous Corvettes and Porsches to more prosaic camper vans and Fiats – all of which led one blogger to conclude that "Mattel's Barbie doll is something of a car connoisseur but by no means a brand snob." ■



## Barbie behind the wheel (Pt II)

Having previously discussed Barbie's first venture into motoring, Hazel Ralston looks at some of the other cars driven by Mattel's famous fashion doll.





Chris Gray, a long-time subscriber from Scarborough, tells us how his diecast collection naturally grew into a series of detailed garage dioramas. Diorama building was something I only got into once my shelves filled up with restored diecasts of models I had as a kid. In fact, I even won a couple of models from *Diecast Collector* earlier this year when my car collection was featured.

My dioramas are never drawn out or planned. I wanted to display some models in a scene but couldn't quite decide what. Being ex motor trade, I eventually thought, "Garage scenes." From there, I scoured eBay for materials and props, which took quite some time.

I tend to just go with the flow in my head. The Land Rover scene, for example, features buildings that are all homemade, apart from the caravan office, which has been suitably weathered and scratched, complete with a tyre on the roof. The workshop itself is made from plastic card, with doors and windows sourced from Scalemodel Scenery.

The toolboxes and tools were a great find, but separating the spanners and equipment from the sprues, painting them, and then placing them into toolboxes, on wings of cars and around the scene was a bit of a pain. The trolley jacks, axle stands and cans all came from the same supplier. The old Castrol van body acts as a typical 1960s storage shed, something I remember seeing in many garages.

The scrap cars in the top left are 3D prints from eBay. Sadly, one Land Rover was sacrificed for spare parts, now scattered around the site. And don't worry, the figure lying in front of the red Land Rover hasn't been run over – it's on ramps. The blue Land Rover has its front wheels removed and is sitting on axle stands.

Altogether, it took around three months to put everything together, but it's now finished.

The car spares and workshop scene was inspired by a place I worked at in the 1970s, which had a scrapyard next door. The Morris



## Your collection

Every collector has a story. Each month we feature one of our readers and the treasures that mean the most to them. Want to share yours?

Email: [CollectingEditorial@warnersgroup.co.uk](mailto:CollectingEditorial@warnersgroup.co.uk)

Traveller is in for a new wing – well, second-hand. The wing was carefully cut off using a razor saw, which was a bit scary. The freshly painted wing sits on an oil drum, while the front bumper is stacked on another can.

The yard features damaged and rusty wrecks, ready for breaking for spares. All were lightly damaged with a small hammer and weathered to look old and decrepit. The 'A' hanging off one vehicle was accidental – there wasn't enough glue, and when it moved, I thought it looked good, so I left it. The actual garage building itself is a Hornby railway structure.

The A&T Classics garage is another scratch-built scene, again with no drawings, just built straight from my head. It uses Lego windows because they open and are the right size for the cars. It's filled with classics for sale, with people looking around. I found the RAC box in a second-hand shop and added HO/OO scale tubs of flowers to brighten it up, along with handmade bushes in one of the corner windows.

I've also made a few other dioramas, including a Leyland dealer, two Ford classic garages, and a barn find with several wrecks hidden inside. ■





Melbourne has the largest urban tram network in the world, and the tram is an iconic symbol of the city. In particular, the vintage round-nosed wooden trams, many of which are still in service, are loved by residents and visitors alike, and are as closely associated with Melbourne as the Routemaster buses are with London. Trams have been running in Melbourne since the 1870s, initially as cable cars, with electric trams introduced in 1906. In the early days, trams were run by a variety of different local councils and private operators, but in 1919 these were amalgamated into the state-owned Melbourne & Metropolitan Tramways Board (MMTB). During the 1950s, when other cities in Australia and around the world were decommissioning their tram networks, Melbourne didn't; the wide streets could accommodate trams alongside other vehicles, and much of the fleet was relatively new.

By the 1970s, however, there was a need for new trams, and the modern Z-Class was introduced. This type of tram had a more angular appearance, and required passengers to enter via the front doors to pay a seated conductor positioned by the entrance. This often caused hold-ups when large crowds were boarding, so when additional new trams were ordered in 1984, these featured an additional doorway and a roving conductor.

This was the A-Class tram, of which 70 were built. An articulated version was also produced, classified as the B-Class, for use on disused rail lines that had been converted to light rail systems.

## MODEL TRAMS

As the most recognised icon of Melbourne, the vintage W-Class trams have always been a popular subject for souvenirs. There have even been high-quality diecast models, made by companies such as EFE and Cooe Classics. However, the more modern trams are rarely featured in any form of marketing. On a recent trip to Australia, I picked up a model of an A-Class tram in its current livery.

The model was, surprisingly, made in India by a company called Centy Toys, which claims to be India's leading manufacturer of model vehicles. Most of its toys are fairly generic, and the tram appears to be its most realistic product. Australian trams are not exactly famous in India, and it appears that the model was commissioned by Belta Brands, a Melbourne-based company specialising in souvenirs, toys and sporting goods.

The tram is quite a well-proportioned replica of an A-Class tram and appears to be around OO gauge. At first impression it looks diecast, but it is actually made



# A tram from Down Under

Our resident Aussie **Mike Pigott** looks at a new model of one of the iconic trams from his home town of Melbourne, Australia.

from thick polystyrene. The glazing is a separate component but is very dark-tinted, disguising the lack of an interior. The body is moulded in white plastic and represents the tram as it appears today, complete with air-conditioning pods on the roof and a heavy pantograph. The livery is current, in white with yellow doors and a two-tone green 'leaf' pattern. The base is black plastic, incorporating two fake bogies; the tram actually runs on four concealed rubber wheels and features a pull-back motor.

Although the livery is accurate, there is no reference to the company that operates

the trams. The 'Yarra Trams' branding on the sides is replaced with 'City Tram', and the PTV (Public Transport Victoria) logo is changed to CT, presumably for Centy Toys or 'City Tram'. In addition, the destination display simply reads 'Melbourne'; real trams show the route number and specify the area of the city they are travelling to.

The model comes packaged on a large blister card, featuring an image of the tram set against Melbourne's famous Flinders Street Station. Although clearly a budget toy, it's notable as the only available model of a modern Australian tram. ■





# DIECAST COLLECTOR MODEL SHOP

**We've reviewed them... now you can buy them directly from us!**

Simply complete and return the form below...



£24.99

Corgi 1/76 Routemaster -  
Paddington 3

Ref: CC89206 **Our Price: £24.99**



£70.00

Britains Farm 1/50 Cash IH CX210E  
Excavator

Ref: BF43397 **Our Price: £70**



£50.00

Solido 1/18 Ford Focus RS MK2 -  
Ultimate Green Metallic 2009

Ref: SOL1813101 **Our Price: £50.00**



£54.99

Solido 1/18 Shelby Mustang Super  
snake race red 2025

Ref: SOL1813801 **Our Price: £54.99**



£29.99

Oxford Diecast 1/76 Volvo Boniface  
Recovery Truck Crouch Recovery

Ref: OX76VOL09REC **Our Price: £29.99**



£149.99

TopSpeed 1/18 Lamborghini  
Countach LPI 800-4 Bianco Siderale

Ref: TS0438 **Our Price: £149.99**

**ALL MODELS COME WITH FREE POSTAGE AND PACKAGING!**



Prefer to speak to our friendly UK-based team to place your order? Call us today on 01778 392006 or complete this form and return it to us at: Diecast Collector Model Shop, Warners Group Publications, The Maltings, West Street, Bourne, Lincs, PE10 9PH

Title: \_\_\_\_\_ First name: \_\_\_\_\_ Surname: \_\_\_\_\_

Address: \_\_\_\_\_

Postcode: \_\_\_\_\_

☐ Yes, I am happy to receive relevant special offers via post.

Tel: \_\_\_\_\_ Email: \_\_\_\_\_

☐ Yes, I would like to receive the FREE Collecting email newsletter.

**Please send me the following model (s) and I enclose a cheque made payable to Warners Group Publications**

	Quantity	Unit price	Total
<input type="checkbox"/> Corgi 1/76 Routemaster - Paddington 3 (CC89206)		£24.99	
<input type="checkbox"/> Britains Farm 1/50 Cash IH CX210E Excavator (BF43397)		£70.00	
<input type="checkbox"/> Solido 1/18 Ford Focus RS MK2 - Ultimate Green Metallic 2009 (SOL1813101)		£50.00	
<input type="checkbox"/> Solido 1/18 Shelby Mustang Super Snake Race Red 2025 (SOL1813801)		£54.99	
<input type="checkbox"/> Oxford Diecast 1/76 Volvo Boniface Recovery Truck Crouch Recovery (OX76VOL09REC)		£29.99	
<input type="checkbox"/> TopSpeed 1/18 Lamborghini Countach LPI 800-4 Bianco Siderale (TS0438)		£149.99	
<b>Total Price</b>			

*Please allow up to 4 weeks for models to arrive. T&Cs apply. Available while stocks last. See <https://ccofgb.uk/terms> for details.*



*Join the club  
today*

Sign up at  
**ccofgb.uk/register**



## KRJ VINTAGE TOY FAIRS

### DITTON, KENT

**SUNDAY 8 FEBRUARY** 9.45am - 1.15pm

DITTON COMMUNITY CENTRE, KILN BARN ROAD, DITTON, KENT, ME20 6AH

### RAYLEIGH, ESSEX

**SUNDAY 15 FEBRUARY** 9.45am - 1.15pm

SWEYNE PARK SCHOOL, RAYLEIGH, ESSEX SS6 9BZ

### RAYLEIGH, ESSEX

**SUNDAY 8 MARCH** 9.45am - 1.15pm

SWEYNE PARK SCHOOL, RAYLEIGH, ESSEX SS6 9BZ

### BROMLEY, KENT

**SUNDAY 22 MARCH** 9.45am - 1.15pm

BROMLEY HIGH SCHOOL, BLACKBROOK LANE, BROMLEY, KENT. BR1 2TW

### DITTON, KENT

**SUNDAY 3 MAY** 9.45am - 1.15pm

DITTON COMMUNITY CENTRE, KILN BARN ROAD, DITTON, KENT, ME20 6AH

### RAYLEIGH, ESSEX

**SUNDAY 7 JUNE** 9.45am - 1.15pm

SWEYNE PARK SCHOOL, RAYLEIGH, ESSEX SS6 9BZ

### BROMLEY, KENT

**SUNDAY 28 JUNE** 9.45am - 1.15pm

BROMLEY HIGH SCHOOL, BLACKBROOK LANE, BROMLEY, KENT. BR1 2TW

### DITTON, KENT

**SUNDAY 12 JULY** 9.45am - 1.15pm

DITTON COMMUNITY CENTRE, KILN BARN ROAD, DITTON, KENT, ME20 6AH

### RAYLEIGH, ESSEX

**SUNDAY 20 SEPTEMBER** 9.45am - 1.15pm

SWEYNE PARK SCHOOL, RAYLEIGH, ESSEX SS6 9BZ

ADMISSION £2.50 - UNDER 16'S FREE!

**FOR MORE INFORMATION:**

**07977 646386 and 07889 901729**



## MODEL TOY & TRAIN FAIRS 2026

Open 9.30am to 12.30 pm, Children FREE, Parking & Refreshments

	Jan	Feb	Mar	Apr	May	Jun	Jul	Aug	Sep	Oct	Nov	Dec
<b>ASHINGTON Centre</b> , Foster Lane, Ashington, RH20 3PG (£2)	4	1	8	19	24		12	9	6	11	15	20
<b>BOGNOR (SATURDAYS)</b> Felpham Community College, (near BUTLINS) Bognor Regis PO22 8EL (£2)			21			20			26		7	
<b>HOLLYCOMBE</b> Iron Hill, Midhurst Road, Liphook GU30 7LP (£4)						14		16				
<b>MIDHURST</b> The Grange Leisure Centre, Bepton Road, Midhurst GU29 9HD (£2.50)		15			31		19		20			
<b>STEYNING</b> Centre, Fletchers Croft, (off Church Street) BN44 3XZ (£2)					10		26				29	
<b>WALBERTON Hall</b> , The Street, Walberton, Near Arundel, BN18 0PJ (£2)			1								22	
<b>WORTHING</b> Charmandean Centre A27 / Forest Road, BN14 9HS (£2.50)			22			7			13		1	27

**Call: PETE 01424 846676 or DAVID 07742 609865**

**E: modelcarmart@gmail.com W: modeltoyauctions.co.uk/news/**



**gth** Greenslade Taylor Hunt

# COLLECTOR'S SALE

**Wednesday  
February 25th**



Sedgemoor Auction Centre, North Petherton, TA6 6DF  
01278 410250 • [antiques.saleroom@gth.net](mailto:antiques.saleroom@gth.net) • [www.gth.net](http://www.gth.net)

# TOY & TRAIN COLLECTORS FAIR

## WALSALL WOOD

Oak Park Active Living Centre, Coppice Road, Walsall Wood. WS9 9BH  
(situated off A461 Walsall - Lichfield Road - close to junction with A452)

**Sunday 8th March 2026**

10.30am - 3.00pm Admission: Adults £2.00, Seniors £1.70, Child £1.00

Over 80 tables - spacious well lit venue - Buy, sell, swap collectable toys - Refreshments available

**Future dates (all Sundays):**  
May 10th 2026  
20th September 2026 - November 29th 2026

For table bookings and enquiries please call Geoff or Linda Price on 01922 643385  
[www.transtarpromotions.com](http://www.transtarpromotions.com)

Jackson & Jackson Events  
*Toy & Train Collector Fair*

**Saturday 7th March**  
10.30am - 2.30pm • Admission £3  
Oswestry Showground, SY11 4AS

For more information call:  
**David: 07967 681080**

STOWMARKET MODEL RAILWAY CLUB

# TRAIN & MODEL FAIR

10AM - 2:30PM  
**SUN 1ST MARCH 2026**

NEEDHAM MARKET COMMUNITY CENTRE, NEEDHAM MARKET, SUFFOLK, IP6 8BB

enquiries@stowmodelrailclub

**TOY, TRAIN & SCI FI FAIRS** 07504 035955

**RAINTON SUNDAY 8TH FEBRUARY**  
RAINTON ARENA  
Mercantile Road, Houghton le Spring, Tyne & Wear, DH5 5PH - 10.30am-3pm  
• Admission: Adults £4.00, Children/Senior Citizens £3.00, Early Bird £7  
• Buy, sell and swap trains, model cars, buses and trucks, soldiers and more! • Free parking, working exhibitions and cafe facilities

**GATESHEAD SUNDAY 22ND FEBRUARY**  
GATESHEAD STADIUM  
Nelson Road, Gateshead, Tyne & Wear, NE10 0EN - 10.30am-3pm  
• Admission: Adults £4.00, Children/Senior Citizens £3.00, Early Bird £7  
• Buy, sell and swap trains, model cars, buses and trucks, soldiers and more! • Free parking, working exhibitions and cafe facilities

**GLASGOW SUNDAY 1ST MARCH**  
BELLAHOUSTON LEISURE CENTRE  
Bellahouston Drive, Bellahouston, Glasgow, G22 1PH - 10.30am-3pm  
• Admission: Adults £4.00, Children/Senior Citizens £3.00, Early Bird £7  
• Buy, sell and swap trains, model cars, buses and trucks, soldiers and more! • Free parking, working exhibitions and cafe facilities

**RAINTON SUNDAY 29TH MARCH**  
RAINTON ARENA  
Mercantile Road, Houghton le Spring, Tyne & Wear, DH5 5PH - 10.30am-3pm  
• Admission: Adults £4.00, Children/Senior Citizens £3.00, Early Bird £7  
• Buy, sell and swap trains, model cars, buses and trucks, soldiers and more! • Free parking, working exhibitions and cafe facilities

Interested in selling your collection or want a table to sell your stock?  
Contact Jim on 07504 035955 or email: [jim\\_corr73@hotmail.co.uk](mailto:jim_corr73@hotmail.co.uk)

**MAIDSTONE VINTAGE TOY FAIR**  
**SATURDAY 28TH FEBRUARY 2026**  
9.00 a.m. to 2.30 p.m. Admission £3.00

TO THE BEST VINTAGE TOY SHOW IN KENT

5 MINS WALK FROM TOWN CENTRE.  
MAIDSTONE WEST & EAST RAILWAY STATIONS. CLOSE TO MOTORWAYS M20 AND M2. LARGE ON-SITE CAR PARK (P&D). ALL DAY REFRESHMENTS

**PLENTY TO SEE ALL DAY!**

**-TOYS, TRAINS, MODELS & MORE!**

**FURTHER INFORMATION**  
[www.maidstonevintagetoyfair.co.uk](http://www.maidstonevintagetoyfair.co.uk)

**TEL: (01622) 298159  
(01732) 840787**

[www.j-jwebbtoyfairst.com](http://www.j-jwebbtoyfairst.com)

**J&J FAIRS** 01522 880383 **J&J FAIRS**

**LINCOLNSHIRE SUNDAY 1ST MARCH 2026**  
The Exhibition Centre, Lincolnshire Showground, Lincoln, LN2 2NA  
10am - 2pm >> approx. 150 tables >> 6ft table £35  
>> Admission (16+) £3.50, Accompanied Ch (15 and under) Free

**SPALDING SUNDAY 15TH MARCH 2026**  
Springfields Events & Conference Centre, Camelgate, Spalding, Lincs PE12 6ET  
10am - 2pm >> approx. 150 tables >> 6ft table £35  
>> Admission (16+) £3.50, Accompanied Ch (15 and under) Free

**BRENTWOOD SATURDAY 25TH APRIL 2026**  
The Brentwood Centre, Doddinghurst Road, Brentwood, Essex, CM15 9NN.  
10am - 2pm >> approx. 180 tables >> 6ft table £40  
>> Admission (16+) £4 per person, Accompanied Ch (15 and under) Free

**LINCOLNSHIRE SUNDAY 24TH MAY 2026**  
The Exhibition Centre, Lincolnshire Showground, Lincoln, LN2 2NA  
10am - 2pm >> approx. 150 tables >> 6ft table £35  
>> Admission (16+) £3.50, Accompanied Ch (15 and under) Free

**SPALDING SUNDAY 31ST MAY 2026**  
Springfields Events & Conference Centre, Camelgate, Spalding, Lincs PE12 6ET  
10am - 2pm >> approx. 150 tables >> 6ft table £35  
>> Admission (16+) £3.50, Accompanied Ch (15 and under) Free

**BRENTWOOD SATURDAY 4TH JULY 2026**  
The Brentwood Centre, Doddinghurst Road, Brentwood, Essex, CM15 9NN.  
10am - 2pm >> approx. 180 tables >> 6ft table £40  
>> Admission (16+) £4 per person, Accompanied Ch (15 and under) Free

For bookings and further information please telephone Lorraine on **01522 880383**  
Email: [jandjfairst@gmail.com](mailto:jandjfairst@gmail.com)

**NEW VENUE!**

# Windsor International Toy & Train Collector's Fair 2026

Promoters of the 1st Ever UK Toy Fair in 1971 57th Year

**Sunday 1st March**  
New Windsor Community Association Centre,  
Hanover Way, Windsor, SL4 5NW

Public Admission £ 2  
from 10.30am to 2.00pm  
Early Bird Entry (from 9.00am) £ 5  
No Pets Except Service Dogs - Free Parking

Trudy's REFRESHMENTS SERVED BY HOMEMADE KITCHEN  
SNACKS • CAKES • LIGHT LUNCHES

**On Site Refreshments!**

• Huge variety of old toys, plus some new ones and other collectables, available for sale & exchange from traders & collectors •

Organised by the Maidenhead Static Model Club  
Visit our website: [www.windsortoyfair.co.uk](http://www.windsortoyfair.co.uk)  
For more information or to book a table please ring: 07810 513576 (New Number)

**Future Dates:** 10th May 2026  
18th October 2026

**NOW IN WINDSOR!**



# TOYFAIR TIMES

## FAIRS

### 5 FEBRUARY

- Theydon Bois  
Joe Lock  
07866 641215

### 7 FEBRUARY

- Ludlow  
Tony Oakes  
01270 652773

### 8 FEBRUARY

- Ditton  
KRJ Vintage Toy Fairs  
07534 939022
- Rainton  
Jim Corr  
07504 035955
- Kempton Park  
R M Toys  
02392 262446 / 07957 823507

### 14 FEBRUARY

- Oxford  
Richard Atkins  
01869 347489

### 15 FEBRUARY

- Midhurst  
David Parsons  
07742 609865
- Rayleigh  
KRJ Vintage Toy Fairs.  
07534 939022

- Walberton  
David Parsons  
07742 609865

### 24 FEBRUARY

- Newbury  
Special Auction Services  
01635 580595

### 27 FEBRUARY

- Bury St Edmunds  
Lacy, Scott & Knight  
01284 748625

### 28 FEBRUARY 28

- Maidstone  
Mike Spencer  
01622 298159 / 01732 840787



ABOVE: Just some of the great selection of cars and toys available at the recent Spalding toy fair.

### 1 MARCH

- Lincoln  
J & J Fairs  
01522 880383

- Glasgow  
Jim Corr  
07504 035955

- Windsor  
Windsor Toy & Train Fairs  
07810 513576

### 7 MARCH

- Oswestry  
Jackson & Jackson Events  
07967 681080

### 8 MARCH

- Ashington  
David Parsons  
07742 609865
- Rayleigh  
KRJ Vintage Toy Fairs  
07534 939022

### 8 MARCH

- Walsall Wood  
Transtar Promotions  
01922 643385

### 15 MARCH

- Port Sunlight  
Jackson & Jackson Events  
07967681080

- Spalding  
J & J Fairs  
01522 880383

## AUCTIONS

### 1 FEBRUARY

- Kenardington  
C & T Auctions  
01233 510050

### 13 FEBRUARY

- Canterbury  
Canterbury Auction Galleries  
01227 763337

### 13 FEBRUARY

- Kings Langley  
Excalibur Auctions  
0203 6330913

### 14 FEBRUARY

- Canterbury  
Canterbury Auction Galleries  
01227 763337

### 21 FEBRUARY

- Kings Langley  
Excalibur Auctions  
0203 6330913

### 25 FEBRUARY

- Sedgemoor  
Greenslade Taylor Hunt  
01278 410250

### 9 MARCH

- Deeside  
UK Toy & Model Auctions  
01270 652773



# TO ADVERTISE YOUR BUSINESS HERE OR ONLINE



Contact **Alex** on  
**07350 360313**  
[Alex.lyon@warnersgroup.co.uk](mailto:Alex.lyon@warnersgroup.co.uk)  
or **Stuart** on  
**07345 599868**  
[Stuart.day@warnersgroup.co.uk](mailto:Stuart.day@warnersgroup.co.uk)



Welcome to the home of  
**CITIBUS Models**  
[www.citibusmodels.co.uk](http://www.citibusmodels.co.uk)  
07788 106064  
[citibusmodelskits@outlook.com](mailto:citibusmodelskits@outlook.com)  
Discount code: DIECAST10

**CHURCH STREET MODELS**  
01256 358060  
10A Church Street, Basingstoke, Hants, RG21 7QE  
Open Monday (December only), Tuesday (October to March), Wednesday-Saturday 9:30-17:00  
[www.churchstreetmodels.co.uk](http://www.churchstreetmodels.co.uk)

00, N & 1/43 Diecast Cars, 00/N  
Commercials, 00, N & 1/72 WW2 Military, 1/72  
Planes, from Base, Classic, Corgi, EFE, Oxford  
and more.  
Use our secure online shop  
or visit in person.  
Tel: 01256 358060

## Jaunty Jalopies of Hunmanby

6 Church Hill, Hunmanby, Nr Filey, YO14 0JU  
Landline 01723 890060 Mobile 07889 286559

- Good stock of Corgi Classics, Vanguards, Modern Trucks
- Heavy Haulage, Plant & Construction, Farm, Classic Cars, Steam, Trackside, Aviation Archive
- Vintage Commercials, 1:76 Buses - EFE & Omnibus
- Massive quantity of Herpa 1:87
- Huge Selection of Fire & Police Vehicles
- Lots more: Obsolete Corgi, Dinky, Spot-On
- Matchbox, Conrad, NZG, Joal, Britains, Minichamps, Universal Hobbies, 1:18 etc

Open every  
Wednesday!

Other days  
on demand!

Always ~ 150 "BUY IT NOW" Offers on eBay. Search using seller ID: jauntyjalopies  
Shop can Open most days On Demand. Simply Arrive & Call for Access.  
\*If making a long journey call first to avoid disappointment.

**COLLECTIONS PURCHASED, Large & Small, New or Old  
with Fairness, Discretion & Sensitivity. Will travel nationwide**

Email: [info@jauntyjalopies.co.uk](mailto:info@jauntyjalopies.co.uk) "Diecast is What we Do" [www.jauntyjalopies.co.uk](http://www.jauntyjalopies.co.uk)

**MonkBar Model Shop**  
Established 1963  
Find us by Monk Bar  
Only 2 minutes from  
York Minster  
Open Monday - Saturday 9am - 5pm  
2 Goodramgate  
York - YO1 7LQ  
01904 659423

**Diecast Planes - Diecast Cars & Buses  
Model Railways - Plastic Kits - Scalextric**

**MONK BAR MODEL SHOP LTD**  
Handley Page Halifax MkV  
'London's Revenge' / 'L for Lana' -  
RCAF No.427 Sqn - RAF Leeming  
AA37210

Stockists of Corgi Aviation, Collectables, Vanguards, OOC, Plus Bburago, Solido  
IXO Models, MCG, Oxford Diecast, W.Britain, Hobby Master, Siku & Britains and more  
[www.monkbarmodelshop.co.uk](http://www.monkbarmodelshop.co.uk)

# Ramsay's 19th THE ULTIMATE DIECAST GUIDE!

Ramsay's British Diecast Model Toy Catalogue has  
been the trusted resource  
for collectors since 1983!

The comprehensive guide features over 19,000 listings,  
up-to-date market valuations, detailed information on  
manufacturers, and insights into model variations,  
making it an essential tool for any diecast collector.

Ramsay's 19th Edition will be shipping this November.

**Ramsay's**  
**BRITISH DIECAST**  
19th Edition  
MODEL TOYS CATALOGUE  
356 PAGES • OVER 19,000 LISTINGS • 50+ MANUFACTURERS  
The Collector's Price Guide to:  
• Models of YesterYear • Tri-Ar  
PLUS comprehensive listings from  
From the publishers of  
Collectors Club

**ORDER FOR  
£34.99**

Order now by using one of these three methods:

- Visit the link: <https://ccofgb.uk/ramsay-19th-edition>
- Scan the QR code
- Call our friendly team at +44 1778 392080 to place your order over the phone





## >> RETAILERS

### NORTHERN IRELAND

**MY OLD TOYBOX** For collectable diecast and kits, Matchbox, Dinky, Corgi, Action Man, Star Wars, sci-fi, Subbuteo, etc. The Old Toybox, Unit 14, Smithfield Market, Belfast BT1 1JE. Tel: **07719 100483** Email: [james1gilliland@hotmail.com](mailto:james1gilliland@hotmail.com) Web: [www.myoldtoyboxbelfast.co.uk](http://www.myoldtoyboxbelfast.co.uk)

### WARWICKSHIRE

**METROPOLIS VINTAGE TOYS** We are specialists in vintage collectables, particularly TV and Film related toys, Action Man and other Action Figures, also selling Dinky, Corgi and Model Railways. Mail order worldwide is always a pleasure. Your surplus quality toys are always wanted and top prices are paid for fine examples. Open 11am - 6pm Thursday - Saturday. 41b Smith Street, Warwick, CV34 4JA. Tel: **01926 400311** [www.metropolistoys.co.uk](http://www.metropolistoys.co.uk) Email: [chris@metropolistoys.co.uk](mailto:chris@metropolistoys.co.uk)

### WALES

**COLWYN BAY** - Clwyd Models Second hand Model Railways, Books, Videos, Diecast etc bought & sold. Open Times: Thurs, Fri, Sat only 10am-1pm & 2pm-5pm. 447 Abergele Rd,

Old Colwyn, Conwy. Tel: **01492 518709** Email: [clwydmodels@tiscali.co.uk](mailto:clwydmodels@tiscali.co.uk)

### WEST MIDLANDS

**SPRINGHILL MODELS** Stockists of Corgi, Oxford Diecast, Greenlight, Whitebox, and others. Thursday to Saturday 10am - 4pm. Contact: Pete Skilton, 4 Springhill Lane, Penn, Wolverhampton, W/ Mids, WV4 4SH. Tel: **01902 341302** Web: [www.springhillmodels.co.uk](http://www.springhillmodels.co.uk) Email: [pete@springhillmodels.co.uk](mailto:pete@springhillmodels.co.uk)

### WEST SUSSEX

**CLASSIC TOY COLLECTIBLES:** Items for sale from 1950s to 1990s, include Dinky, Corgi, Matchbox, Spot-on to TV/Film related, Scalextric, tinplate/novelty, trains, action figures and popular culture, also later Vanguards, Oxford Diecast, and more. Located at The Cabinet Rooms, 39 High Street, Arundel BN18 9AG. Tel. **0773 894 7522**. "Online prices, but without the added P&P costs!"

### YORKSHIRE

**DALESMAN DIECAST** Vast range of diecast models available, many at discounted prices.

Collections and unwanted stock purchased for cash. Contact: Ken Hartshorne, Victoria Rd, Guiseley, Leeds, LS20 8DG Tel: **01943 873420** Email: [info@dalesmandiecast.co.uk](mailto:info@dalesmandiecast.co.uk) Web: [www.dalesmandiecast.co.uk](http://www.dalesmandiecast.co.uk)

### WANTED

**VINTAGE FIREWORK COLLECTOR.** Do not light the blue touch paper and burn British Heritage, private collector will pay cash and collect from anywhere, licensed explosive storage, call Tony on **07956 506300**

**TO ADVERTISE YOUR BUSINESS  
HERE OR ONLINE**

Contact Alex on  
**07350 360313**  
or email  
[Alex.lyon@warnersgroup.co.uk](mailto:Alex.lyon@warnersgroup.co.uk)



## >> AUCTIONEER LISTING

### BEDFORDSHIRE

#### ■ W&H PEACOCK

Bedford, Tel: 01234 266 366  
[toys@peacockauction.co.uk](mailto:toys@peacockauction.co.uk)  
[www.peacockauction.co.uk](http://www.peacockauction.co.uk)



### BERKSHIRE

#### ■ SPECIAL AUCTION SERVICES

Newbury, Tel: 01635 580595  
[dave@specialauctionservices.com](mailto:dave@specialauctionservices.com)  
[dominic@specialauctionservices.com](mailto:dominic@specialauctionservices.com)  
[www.specialauctionservices.com](http://www.specialauctionservices.com)



### BUCKINGHAMSHIRE

#### ■ OVERTURE AUCTIONS

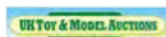
Great Missenden, Tel: 07359 915784/07391 049072  
[info@overtureauctions.co.uk](mailto:info@overtureauctions.co.uk)  
[www.overtureauctions.co.uk](http://www.overtureauctions.co.uk)



### CHESHIRE

#### ■ UK TOY & MODEL AUCTIONS

Ledsham, Chester  
Tel: 01270 652773 / 07892 870729  
[www.uktoyauctions.com](http://www.uktoyauctions.com)  
[enquiries@uktoyauctions.com](mailto:enquiries@uktoyauctions.com)



#### ■ BRITISH TOY AUCTIONS

Runcorn, Tel 01928 579032  
[enquiries@britishtoyauctions.co.uk](mailto:enquiries@britishtoyauctions.co.uk)  
[www.britishtoyauctions.co.uk](http://www.britishtoyauctions.co.uk)



### DEVON

#### ■ GREENSLADE TAYLOR HUNT

Tiverton, Tel: 01278 410250  
[www.gth.net](http://www.gth.net)  
[antiques.saleroom@gth.net](mailto:antiques.saleroom@gth.net)



### DEVON

#### ■ PIERS MOTLEY AUCTIONS

Exmouth, Tel: 01395 267403  
[www.piersmotleyauctions.co.uk](http://www.piersmotleyauctions.co.uk)  
[info@piersmotleyauctions.co.uk](mailto:info@piersmotleyauctions.co.uk)



### ESSEX

#### ■ STACEY'S AUCTIONEERS AND VALUERS

Rayleigh, Tel: 01268 777122  
[info@staceyauction.com](mailto:info@staceyauction.com)  
[www.staceyauction.com](http://www.staceyauction.com)



### HERTFORDSHIRE

#### ■ EXCALIBUR AUCTIONS

Kings Langley, Tel: 02036 330913  
[www.excaliburauctions.com](http://www.excaliburauctions.com)



### KENT

#### ■ C&T AUCTIONEERS AND VALUERS

Kent, Tel: 01233 510050  
[enquiries@candtauctions.co.uk](mailto:enquiries@candtauctions.co.uk)  
[www.candtauctions.co.uk](http://www.candtauctions.co.uk)



### LINCOLNSHIRE

#### ■ GOLDING YOUNG

Bourne Tel: 01778 422686  
Grantham Tel: 01476 565118  
Lincoln Tel: 01522 524984  
[www.goldingyoung.com](http://www.goldingyoung.com)



### LANCASHIRE

#### ■ OUTHWAITE & LITHERLAND

Southport Tel: 01704 538489  
[www.lots.uk.com](http://www.lots.uk.com)



### SOMERSET

#### ■ GREENSLADE TAYLOR HUNT

North Petherton, Tel: 01278 410250  
[www.gth.net](http://www.gth.net)  
[antiques.saleroom@gth.net](mailto:antiques.saleroom@gth.net)



### SUFFOLK

#### ■ LACY, SCOTT & KNIGHT

Bury St Edmunds,  
Tel: 01284 748 625  
[www.lskauctioncentre.co.uk](http://www.lskauctioncentre.co.uk)



### WARWICKSHIRE

#### ■ WARWICK & WARWICK

Warwick, Tel: 01926 499031  
[www.warwickandwarwick.com](http://www.warwickandwarwick.com)



### WEST SUSSEX

#### ■ TOOVEYS

Washington, Tel: 01903 891955  
[auctions@tooveys.com](mailto:auctions@tooveys.com)  
[www.tooveys.com](http://www.tooveys.com)



### YORKSHIRE

#### ■ TENNANTS AUCTIONEERS

Leyburn, Tel: 01969 623780  
[enquiry@tennants-ltd.co.uk](mailto:enquiry@tennants-ltd.co.uk)  
[www.tennants.co.uk](http://www.tennants.co.uk)



### INTERNATIONAL

#### ■ TRAINS, PLANES & AUTOMOBILES

Sydney, Australia +612 4787 7974  
[auctions@antiquetoys.com.au](mailto:auctions@antiquetoys.com.au)  
[antiquetoys.com.au](http://antiquetoys.com.au)





# The Canterbury Auction Galleries

FINE ART AUCTIONEERS SINCE 1911

## 2026 AUCTION DATES

**13th & 14th  
February**

Consignment deadline  
now closed

**10th & 11th  
April**

Consignment deadline  
6th March

**5th & 6th  
June**

Consignment deadline  
1st May

**31st July  
& 1st August**

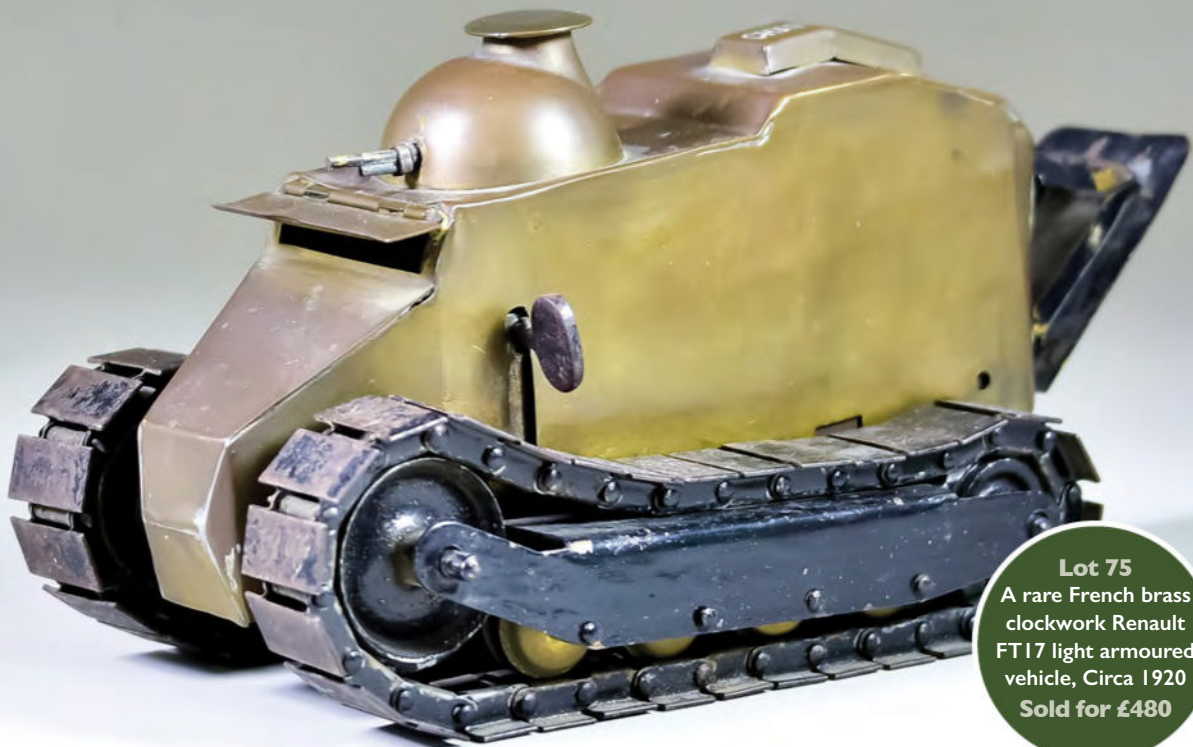
Consignment deadline  
26th June

**2nd & 3rd  
October**

Consignment deadline  
28th August

**27th & 28th  
November**

Consignment deadline  
23rd October



**Lot 75**  
A rare French brass  
clockwork Renault  
FT17 light armoured  
vehicle, Circa 1920  
**Sold for £480**

## DO YOU HAVE SOMETHING TO SELL?

The Canterbury Auction Galleries are experts when it comes to auctioning your toy car collections, action figures, Barbie dolls, Pokemon trading cards, games consoles and many cult classics...

## CONTACT US TO BOOK A FREE VALUATION

Either at home or at our Canterbury salerooms: 40 Station Road West, Canterbury, Kent CT2 8AN  
Telephone **01227 763337** Email **general@tcag.co.uk** Visit **thecanterburyauctiongalleries.com**

## BUYING?

Our app allows you to both browse the current catalogue and follow an auction in real time, wherever you are.  
Our auctions are online only and there are many easy ways to bid - see our comprehensive website.





specialauctionservices.com

## TOYS FOR THE COLLECTOR AUCTION

### 24TH FEBRUARY 2026



We hold at least ten large toy auctions a year, offering something for everyone, from great rarities to modern toys and models. We are picking up consignments from around the UK and would be happy to visit.

Please call Dominic Foster, Bob Leggett or Dave Kemp on +44 (0)1635 580595 or [Dominic@specialauctionservices.com](mailto:Dominic@specialauctionservices.com)

**SPECIAL AUCTION SERVICES**  
Nexus Park, Plenty Close, Newbury RG14 5RL