

THE DIE-CAST COLLECTOR & CUSTOMIZER AUTHORITY

DIE CAST XX

SPRING 2026 | VOL. 22 | ISSUE 1



BLOCK PARTY

JADA'S SMALL BLOCKS SERIES CELEBRATES 25 YEARS OF FAST & FURIOUS

COLLECT & PLAY



HOT WHEELS XL
El Segundo Coupé

JOHNNY LIGHTNING
Mercedes-AMG GT3



BBURAGO
McLaren MCL38



ZR1



OFFICIAL LICENSED PRODUCT General Motors Trademarks used under license to May Cheong Group.

1:18
DIE-CAST METAL



WWW.MAISTO.COM

BMW



1/24

2023 BMW  TOURING



WWW.BBURAGO.COM

Vehicle Features

12 BLOCK PARTY

Jada's Small Blocks Series Re-Imagines *Fast & Furious* Favorites with a Stance-Ready Twist

18 IT'S NOT ABOUT THE CAR

Jada's Nano Scene Brings Han's Garage to Life with Two Nano-Scale Rides & a Display-Ready Backdrop

20 MAIDEN VICTORY

Bburago's 1:24-scale McLaren MCL38 Celebrates Lando Norris's First-Place Finish at the 2024 Miami Grand Prix

26 THE GRIFO RETURNS

Automodello ONE24 1969 Iso Grifo Series I

30 BUILT TO BE SEEN

Jada's Pink Slips Liberty Walk C8 Brings Show Car Style to 1:24 Scale

34 ALL FOR PLAY

Majorette's Ride Now Series Is Built for Fun

42 ALWAYS BET ON BLACK

Johnny Lightning Mercedes-AMG GT3

46 GO BIG!

Hot Wheels XL El Segundo Coupé

General Features

38 TOKYO TREASURE HUNT

Exploring Tokyo's Packed Die-Cast Shelves & Collector Hotspots

Departments

6 EDITOR'S LETTER

8 SHOWROOM

New Releases & First Looks

10 SHOW & TELL

Let's See What You Got!

DIE CAST X SPRING 2026, VOL. 22, ISSUE 1





DIE CAST X

EDITORIAL

EDITORIAL DIRECTOR

THE DIE CAST X EDITORIAL TEAM

MANAGING EDITOR

KARL FUNKE

CONTRIBUTORS

JERRY TSAI, JAMES YORK

DESIGN

ART DIRECTOR

THE AIR AGE DESIGN TEAM

DIGITAL MEDIA

WEB PRODUCER

CIRRATA

ADVERTISING

BEN HALLADAY

203.295.8852 | benh@airage.com

CONSUMER MARKETING

MAST CIRCULATION SERVICES

PUBLISHING

GROUP PUBLISHERS

LOUIS V. DEFRANCESCO JR.,

YVONNE M. DEFRANCESCO

FOLLOW US

ON FACEBOOK: [diecastxmag](#)

ON TWITTER: [@DCXmag](#)

ON INSTAGRAM: [@diecastx](#)

VISIT US ONLINE: [DCXmag.com](#)

COMMENTS MAY BE SENT TO: DCX@airage.com

REPRINTS & LICENSING

WRIGHT'S MEDIA

airage@wrightsmedia.com

[877]652-5295

EDITORIAL

57 DANBURY ROAD, SUITE 202, WILTON, CT 06897

PHONE (203) 529-4635 EMAIL DCX@airage.com

SUBSCRIPTION SERVICES

TO SUBSCRIBE, SUBMIT A CHANGE OF ADDRESS,

OR FOR QUESTIONS ABOUT YOUR SUBSCRIPTION,

GO TO <https://www.diecastxmagazine.com/help-contact-us/>

YOU CAN ALSO SEND AN EMAIL TO service@airage.com,

OR CALL +203-529-4638 8AM TO 6PM EST

editor's letter



After a short interruption, we're back—bringing you the latest from the world of die-cast collecting.

In today's challenging print landscape, we've made the move to a digital format. But the content you expect from Die Cast X hasn't changed. You'll still find the same product features, collector-focused stories, and coverage of new releases—now available instantly on your phone, tablet, or computer. Going digital allows us to deliver content faster, include more images, and share more of what's out there. No waiting for an issue to arrive, and no limits on how much we can show.

Thanks for sticking with us. We're looking forward to continuing to cover the models, brands, and stories that make this hobby what it is.

This issue brings together a range of releases and perspectives, from highly detailed replicas to pieces that are simply fun to collect and display. Leading the way is our cover feature on Jada's Small Blocks series. With its stylized proportions and mix of scales, the line stands out as something different—cars that don't take themselves too seriously while still tapping into familiar favorites from the Fast & Furious franchise.

We also take a look at Automodello's 1969 Iso Grifo Series I, a model that reflects a strong focus on accuracy and detail. On

the Formula 1 side, Bburago's 1:24 McLaren MCL38 captures a key moment from the 2024 Miami Grand Prix, marking Lando Norris's first win with a display piece that ties directly to that event.

For those who enjoy variety, Majorette's Ride Now series and the Hot Wheels XL El Segundo Coupé offer a different approach. These are models built with play and accessibility in mind, whether it's exaggerated styling, larger scale, or features that invite interaction rather than careful handling.

We also check out themed releases like the Fast & Furious Nano Scene "Han's Garage" set, which combines die-cast vehicles and a display environment into a compact package that works well on a shelf or desk.

Beyond individual models, this issue also steps into the broader collector experience with a feature on shopping for die-cast in Tokyo. From dedicated collector shops to department stores and toy chains, the range of products available shows just how deep and global the hobby has become.

Whether you're focused on accuracy, display, or just picking up something that looks good to you, this issue covers multiple sides of the hobby—and that's what keeps it interesting.

– The Die Cast X Editorial Team

WHAT'S NEW AT



#235110 - 1:64 TOKYO TORQUE SERIES 10

PRE-ORDER NOW!

235110-A
2019 Nissan 370Z



235110-A

235110-B
1972 Nissan Skyline GT-R (50th Victory)



235110-B

235110-C
2024 Nissan GT-R Nismo



235110-C

235110-D
2007 Nissan GT-R (R35)



235110-D

235110-E
1994 Acura Integra GS-R



235110-E

235110-F
2018 Honda Civic Type-R



235110-F

START YOUR ENGINES! INTRODUCING
HIGH-QUALITY RC CARS ARE COMING SOON TO GREENLIGHT!



FAST & FURIOUS™



1994 Toyota Supra MK IV*



1999 Nissan Skyline GT-R BNR34*

*Pre-Production Sample - Not Final
Subject to Licensor's Final Approval

SHOWROOM

BY DCX STAFF

NEW RELEASES
& FIRST LOOKS



01



03



02



04

01 THE BROOKLIN COLLECTION 1939 GRAHAM COMBINATION COUPE

This 1:43-scale 1939 Graham Combination Coupe by The Brooklin Collection is a finely crafted white-metal replica finished in an elegant beige tone. Showcasing period-correct styling, intricate trim, and precise proportions, this hand-assembled model captures the distinctive character of pre-war American design, making it a stand-out addition to any serious collection.

Scale: 1:43

P/N: K2-6-1-BRK38

MSRP: \$69.95

URL: awesomediecast.com

02 GREEN-LIGHT 1972 CONDOR II RV

GreenLight's 1972 Condor II RV from *National Lampoon's Christmas Vacation* captures the spirit of classic road trips with retro charm. Featuring authentic striping, realistic detailing, and period-correct proportions, this compact motorhome brings vintage camping vibes to your display, making it a fun and nostalgic addition to any die-cast collection.

Scale: 1:64

P/N: 30551

MSRP: \$15.99

URL: 3000toys.com

03 GOLDVARG COLLECTION 1962 LINCOLN CONTINENTAL (ROYAL RED)

The Goldvarg Collection 1962 Lincoln Continental in Royal Red showcases the elegance of a true American luxury icon. With crisp body lines, finely detailed trim, and a rich, glossy finish, this precision-crafted model captures the timeless sophistication and presence that made the Continental a standout of early 1960s design.

Scale: 1:43

P/N: GV-GC088B

MSRP: \$104.95

URL: diecastdirect.com

04 JOHNNY LIGHTNING 1970 FORD RANCHERO SQUIRE

This 1:64-scale 1970 Ford Ranchero by Johnny Lightning, offered as an Auto World Store exclusive, brings classic car-truck styling to life in collectible form. Featuring authentic detailing, period-correct trim, and a finely finished exterior, this limited release captures the unique blend of muscle and utility that defined the iconic Ranchero.

Scale: 1:64

P/N: SCM201

MSRP: \$19.99

URL: autoworldstore.com



FAST & FURIOUS



**CELEBRATE 25 YEARS OF
FAST & FURIOUS
WITH ALL-NEW SMALL BLOCKS**

AVAILABLE IN 1:28 & 1:43 SCALES



SHOW & TELL

LET'S SEE WHAT YOU GOT!

COMPILED BY DCX STAFF
IMAGES PROVIDED BY THE OWNERS

Welcome to the latest installment of Show & Tell! We welcome our readers to share their favorite vehicles from their personal collections with us so that we can help show them off to fellow Die Cast X readers. Let's see what our readers have to Show & Tell!

Die Cast X loves to see our readers' rare and customized die-cast rides. If you have a rare collectible or custom die-cast that you'd like to "show and tell" in a future issue of DCX, submit your ride at: www.diecastxmagazine.com/dcx-readers-collection.



DANIEL METCALF

Location: Gilbert, Arizona
Brand: First Gear
Series: Release #22 (green)
Model: 1949 International Harvester Metro Delivery Van
Scale: 1:24
From the Owner: "This 1949 International Harvester Metro Delivery Van was purchased at the Brass Armadillo Antique Mall in Goodyear, Arizona, in April 2025. It is now part of my collection—the Metcalf Model Vehicles Collection!"



AAQIB AHMED

Location: Bangalore, Karnataka, India

Brand: Poprace

Model: 1991 Mazda 787B

Scale: 1:64

From the Owner: "A legend of Le Mans, now captured in miniature. The iconic Mazda 787B #55, winner of the 1991 24 Hours of Le Mans, sits patiently in the garage in this beautifully detailed 1:64-scale model by Pop Race. Wearing its unmistakable Renown orange and green livery, the car represents the only rotary-powered machine ever to conquer Le Mans. The fine proportions, crisp decals, and race-ready stance bring the spirit of endurance racing to life—even as it's carefully loaded onto the recovery truck after its stint on the track."

JIMMY AIKIN

Location:

Pensacola, Florida

Brand: Tomica

Series: Dream Tomica

Model: No. 161 Nissin

Cup Noodle W Tab

Scale: 1:64

From the Owner: "Cup Noodles is one of my favorite go-to snacks and when I saw this die-cast, I had to have it. It's hilarious and a great display piece parked in between all the racecars in my collection."



BLOCK E

**JADA'S SMALL BLOCKS
SERIES RE-IMAGINES FAST
& FURIOUS FAVORITES WITH
A STANCE-READY TWIST**

TEXT & IMAGES BY JERRY TSAI



PARTY



SPECS

BRAND
JADA SMALL BLOCKS

SCALES
1:28, 1:43

P/N
54134, 24126

URL
JADATOYS.COM



The larger 1:28-scale Small Blocks are satisfying to play with and look great on display.

Jada continues to find new ways to keep things fresh, and the Small Blocks series is a good example of that. Instead of chasing strict realism, this line leans into a stylized, cartoony look that still keeps each car recognizable. The result is something that feels just as much like a collectible as it does a toy you'll want to pick up and mess with.

This first wave ties into the 25th anniversary of *The Fast and the Furious*, and Jada chose three of

the franchise's most recognizable cars to kick things off. In 1:28 scale, you get Brian O'Conner's Toyota Supra, Dominic Toretto's Dodge Charger R/T, and Brian's Nissan Skyline GT-R. The proportions are exaggerated, with chunky bodies, oversized wheels, and a stance that already hints at customization right out of the box.

Step up to the more compact 1:43-scale line, and the selection grows. Alongside the Supra, Charger, and Skyline, Jada adds

Brian's Mitsubishi Eclipse, Han's Mazda RX-7, and the Racer's Edge Ford F-150 SVT Lightning delivery truck. It's a well-rounded mix that covers multiple eras of the franchise while keeping a consistent design language across the board.

What really makes Small Blocks stand out is the adjustable camber feature. It's a simple idea, but it adds a layer of interaction that most die-cast models don't offer. You can dial in a mild street look or push things

Both scales of Small Blocks vehicles feature adjustable wheel camber. No tools required—just apply pressure to the wheels to dial in your stance.





further into exaggerated-stance territory depending on your preference. It's a small touch that makes these models feel more personal and, frankly, more fun.

The finishes are bright and clean, with graphics that translate well to the stylized proportions. These aren't meant to replace traditional scale models on your shelf—they're intended to complement them. Whether you're a longtime Fast &

Furious fan or just looking for something different to break up a display case, Small Blocks hits that middle ground between collectible and play piece.

If this first release is any indication, there's plenty of room for Jada to expand the lineup. And with a franchise as deep as Fast & Furious, there's no shortage of cars that would fit right into this format.



The 1:43-scale Small Block collection includes many favorite vehicles from the Fast & Furious movie franchise.



25 YEARS OF FAST & FURIOUS

When *The Fast and the Furious* hit theaters in 2001, it helped push import tuning and street racing into the mainstream. Cars like the Toyota Supra and Mitsubishi Eclipse became icons overnight, influencing everything from aftermarket parts trends to car meets across the country. That impact carried over into die-cast collecting, where Fast & Furious replicas remain some of the most popular models today. Twenty-five years later, the franchise continues to shape both car culture and the collectibles built around it.



VETTE COUPE



The 1967 Corvette® Stingray™ stands as a true icon of American performance and design. Finished in elegant Marina Blue, it features a striking blue-and-white interior accented by white leather bucket seats. Beneath the hood lies a formidable 427-cubic-inch V8 engine, delivering an impressive 435 horsepower through a 4-speed manual transmission. Distinctive side pipes, a bold White Stinger hood, and classic Chevy® Rally Wheels wrapped in redline tires complete the aggressive, unmistakable look of this two-door legend. The L71 option catapulted the 1967 Corvette® into automotive legend. This high-performance setup combined a big-block V8 with a Tri-Power system—three two-barrel carburetors—delivering an astonishing 435 horsepower. With only 3,754 Corvettes equipped with the L71 that year, it remains one of the rarest and most coveted configurations among serious speed enthusiasts.

- High Quality Die-cast Metal
- Detailed Chassis and Interior
- Removable Hardtop
- Opening Doors, Hood, & Trunk
- Detailed Engine
- Steerable Front Wheels



Don't Miss These Other Auto World Releases!

'79 Dodge Adventurer Sweptline
#AMM1355



TRUE 1:64 2026 Release 1 (A&B Versions Available)
#AW64532



Cruise by your local hobby store,
or see our entire selection of
available replicas online at:
autoworldstore.com



Ford Motor Company Trademarks and Trade Dress used under license to Round 2, LLC. GENERAL MOTORS Trademarks used under license to Round 2, LLC. DODGE and related logos, vehicle model names and trade dress are trademarks of FCA US LLC and used under license by Round 2 LLC. ©2025 FCA US LLC. AMERICAN MUSCLE is a registered trademark of TOMY International, Inc. used under license to Round 2, LLC. ©2025 TOMY International, Inc. All rights reserved. AW AUTO WORLD and design is a registered trademark of Round 2, LLC. ©2025 Round 2, LLC, South Bend, IN 46628 USA. Product and packaging designed in the USA. Made in China. All rights reserved.

IT'S NOT ABOUT THE CAR

JADA'S NANO SCENE BRINGS HAN'S GARAGE TO LIFE WITH TWO NANO-SCALE RIDES & A DISPLAY-READY BACKDROP

TEXT & IMAGES BY JERRY TSAI

Two Nano-scale rides—Lancer Evolution IX and Silvia S15—complete this replica of Han's laid-back workshop.



SPECS

BRAND
JADA TOYS NANO
SCENE

SERIES
FAST & FURIOUS
HAN'S GARAGE

P/N
36403

URL
JADATOYS.COM

Jada's Nano Scene lineup continues to push forward into display-ready sets, and the Fast & Furious "Han's Garage" scene is a solid example of how much character can be packed into a compact footprint. Centered around Han's laid-back, detail-filled workspace from the Fast & Furious franchise, this set includes two nano-scale vehicles along with a stylized backdrop that recreates the garage environment fans have come to love.

The included nano-sized Mitsubishi Lancer Evolution IX and Nissan Silvia S15 are instantly recognizable, giving the set two fan-favorite builds that tie directly into Han's garage scene.

The appeal here isn't just the cars—it's the full scene. The included garage structure adds context, turning what would

otherwise be a pair of small die-cast pieces into a cohesive display. Shelving, tools, and environmental graphics help sell the setting, giving collectors something that feels more like a diorama than a simple pack-in.

The nano-scale vehicles themselves are basic in construction, as expected at this size, but they carry the recognizable shapes and liveries tied to Han's on-screen rides. They're clearly designed to complement the scene rather than stand alone.

For collectors who enjoy the cinematic side of die-cast, this set works well as a shelf piece. It's affordable, easy to display, and captures a specific moment and vibe from the franchise without requiring a large footprint.

1979 Ford F-250 "Walking Tall"
1:18 - 13606

Garbage Pail Kids Series 9
40th Anniversary
1:64 - 54130 A thru F

1959 Chevy Impala
1:24 - 32946R

1:18 Assortments

NTT IndyCar Series
1:18 and 1:64 Scale

Stocking all New IXO Releases

Models in 1:64, 1:43, 1:24, and 1:18 Scales

EST. 1966
Germany

CLA Shooting Brake
1:18 - 1102-11

Arocs 8x4 Dump Truck
1:50 - 1066-55

AMG G 63 W465
1:18 - 1109-52

Over 50 brands and 10,000 items to choose from.

Customer Service: 800-684-3650 / service@3000toys.com

1971 Oldsmobile 442 W30 - "Dr Olds"
1:18 - A1805632

1969 Ford Mustang Boss 429
1:18 - A1801888

1967 Chevrolet Camaro MCACN
1:18 - 1329

1966 Pontiac GTO Hemmings
1:18 - 1346

1:64 Collectible Diecast
Buy Singles, Sets, or Factory Sealed Cases

JLCT018-3
52500-A61-B
IND64036
64522-A-CASE
AWBC003-5

4.9
1,448 reviews

5	93%
4	5%
3	1%
2	0%
1	1%

"Wow, customer service still exists in a fantastic price and awesome products as advertised. I wish I had stumbled onto your company years ago!"

"Of all the online stores I purchase 1/18 scale models from, 3000toys is my favorite. Very reasonably priced, quick shipping and delivery and great customer service."

MAIDEN VICTORY

**BBURAGO'S 1:24-SCALE MCLAREN
MCL38 CELEBRATES LANDO NORRIS'S
FIRST-PLACE FINISH AT THE 2024
MIAMI GRAND PRIX**

TEXT & IMAGES BY JERRY TSAI





SPECS

BRAND
BBURAGO RACE

MODELS
MCLAREN MCL38
MIAMI GRAND PRIX
2024

SCALE
1:24

P/N
18-28040

URL
BBURAGO.COM



Here, the MCL38 wears its authentic Miami GP livery, making it identical to the car Lando Norris piloted to his first F1 victory.

Bburago's McLaren MCL38 Miami GP 2024 release taps into a moment Formula 1 fans will remember for a long time. This model re-creates Lando Norris's No. 4 McLaren from the 2024 Miami Grand Prix, the race where he scored his first Formula 1 victory. On that alone, it has more built-in appeal than a standard season livery release. The connection to a breakthrough win gives it a little more meaning on the shelf.

The model itself is a 1:24-scale die-cast with plastic parts, and Bburago presents it as an officially licensed collectible with authentic Miami GP livery. That is really the main draw here.

McLaren's darker, special-event look already stood apart from the team's usual papaya color scheme, and in scale form it gives the car a different personality from the regular 2024 MCL38 releases. It feels a bit more event-specific, which is exactly what many collectors want from modern Formula 1 replicas.

One of the better touches is the included standing Lando Norris figure. Extras like this help a model feel more complete, especially for collectors who like compact display scenes without stepping up to a much larger scale or a full resin presentation piece.



This Bburago release comes with a Lando Norris driver figure, making it perfect for collectors looking to re-create the excitement of the Miami race.





BEST SELLER

1981 Jeep Grand Wagoneer
(Black w/Wood Panels)
(1:24 Scale)
#WB124260 - \$39.95



NEW!

1980 Jeep CJ-7 Renegade (Red)
(1:24 Scale)
#WB124267 - \$39.95



BEST SELLER

1977 Dodge Royal Monaco Coupe
(Brown) (1:24 Scale)
#WB124261 - \$39.95



View All White Box Items

MODEL CAR GROUP



View All Model Car Group Items



NEW!

1982 Cadillac Fleetwood Brougham (Gray)
(1:18 Scale)
#MCG18377 - \$74.95



BEST SELLER

1987 Chevrolet Caprice "NYPD"
(1:18 Scale)
#MCG18360 - \$74.95



BEST SELLER

1976 Cadillac Eldorado Convertible (Red)
(1:18 Scale)
#MCG18471 - \$84.95



NEW!

1964 Pontiac Safari (Saddle Bronze)
(1:43 Scale)
#GV-GC093B - \$99.95



NEW!

1962 Lincoln Continental (Oxford Gray)
(1:43 Scale)
#GV-GC088A - \$104.95



NEW!

1958 Mercury Parklane (Shadow Rose/Black)
(1:43 Scale)
#GV-GC090A - \$104.95



View All Goldvarg Items



NEW!

1956 Mercury Monclair Phaeton (Lauderdale Blue/Niagara Blue)
(1:43 Scale)
#GV-GC086B - \$104.95



NEW!

1976 Oldsmobile Custom Cruiser (Cream Gold w/Wood Panels)
(1:43 Scale)
#GV-GC078A - \$104.95



NEW!

1967 Ford Galaxie (Burnt Amber Poly)
(1:43 Scale)
#GV-GC079B - \$104.95



NEW!

1961 Chevrolet Biscayne "Ohio State Highway Patrol"
(1:43 Scale)
#GV-GC097A - \$99.95



NEW!

HIGHLY DETAILED!

1979 Lincoln Continental Town Car (Dark Blue)
(1:64 Scale)
#SS-60002 - \$37.95



LIMITED!

MINI GT

Nissan Skyline 2000GT-R (KPGC10) Kaido Works V2 (White)
(1:64 Scale)
#MGT-KHMG211 - \$21.99



LIMITED!

MINI GT

Mazda RX-7 LB-Super Silhouette (Liberty Walk Black)
(1:64 Scale)
#MGT00785 - \$14.99



LIMITED!

Nissan LB-Super Silhouette S15 SILVIA #555 V2 2024 Formula Drift Japan (Green)
(1:64 Scale)
#MGT0823 - \$19.99

Check out these and other popular brands on our website!





The figure gives the set a little more presence and makes this release feel less like just another F1 car in a blister or window box. The car is also described as display-ready straight from the box, which suits collectors who want something simple and clean to put straight into a case.

As with many Bburago Formula 1 pieces, this one looks aimed at the sweet spot between affordability

and recognizable detail. It may not chase the ultra-premium crowd, but that's not really the point.

This is the kind of model that works well for collectors who enjoy marking important current F1 moments without spending top-shelf money on every release. For McLaren fans, Norris fans, or anyone building a collection around first wins and milestone races, this is an easy one to understand.

ABOUT THE ACTUAL CAR

The McLaren MCL38 was McLaren's 2024 Formula 1 challenger, and was driven by Lando Norris and Oscar Piastri. Norris gave the car its first win at the Miami Grand Prix on May 5, 2024, which was also his first Formula 1 victory. By season's end, the MCL38 had become one of the standout cars on the grid.



By the end of the 2024 season, the No. 4 car had become one of the standout entries on the grid.



The BIGGEST Name in Diecast Miniatures



Pre-Order Now!

NEW CASTING!

64-0671

1:64 Scale 1979 Kenworth K100 Aerodyne w/ Trailer:
BJ and the Bear

\$119.95



NEW CASTING!

Pre-Order Now!

\$119.95



64-0682

1:64 Scale Peterbilt 379 Condo Sleeper Tractor & Trailer:
Western Distributing Transportation

NEW CASTING!

\$119.95



64-0670

1:64 Scale 1976 Kenworth W900A w/ Reefer Trailer:
Bandit Trucking - Special Edition Paint

Pre-Order Now!

\$49.95 EACH!

2026 World Cup Team Buses

or **\$39.95 EACH** if you purchase **ALL 10 MODELS!**



87-0715 MCI J4500 Coach:
United States National Soccer Team **1:87 Scale**



87-0719 Prevost H3-45 Coach:
Canada National Soccer Team **1:87 Scale**



87-0718 Scania Touring HD Coach:
Mexico National Soccer Team **1:87 Scale**



87-0716 Van Hool CX-45 Coach:
Brazil National Soccer Team **1:87 Scale**



87-0723 Prevost X3-45 Coach:
Argentina National Soccer Team **1:87 Scale**



87-0726 Mercedes-Benz Tourrider:
Spain National Soccer Team **1:87 Scale**



87-0724 MCI D4520 Coach: **1:87 Scale**
England National Soccer Team



87-0721 Mercedes-Benz Tourrider: **1:87 Scale**
Germany National Soccer Team



87-0717 Scania Touring HD Coach: **1:87 Scale**
France National Soccer Team



87-0730 Van Hool CX-45 Coach: **1:87 Scale**
Netherlands National Soccer Team

For a complete listing of all items visit... Iconic-Replicas.com

AwesomeDiecast.com



or Call Us at 561.350.4045 M-F 9am-6pm EST



Not responsible for typographic errors. Quantities are limited. Expires without prior notice. Prices are subject to change without prior notice.

THE GRIFO



**AUTOMODELLO ONE24
1969 ISO GRIFO SERIES I**

TEXT & IMAGES BY JERRY TSAI

RETURNS



*Automodello
1969 Iso Grifo*

The Iso Grifo was known for blending Italian styling with American muscle; this highly detailed model is the result of a collaboration between Automodello and Iso Grifo expert Darren Frank.



Automodello's Iso Grifo Series I has been a long time coming. First proposed in 2018 by Iso Grifo expert Darren Frank, the project has gone through years of development before finally reaching production. The result is a model aimed squarely at collectors who value accuracy and limited production runs.

Frank, an Iso Grifo owner himself, worked directly with Automodello throughout the process. His involvement shows in the final product, which focuses on getting the

proportions, stance, and small details right rather than relying on overdone features.

The real Iso Grifo is known for blending Italian styling with American V8 power. Developed under Renzo Rivolta, the car combined design work by Giorgetto Giugiaro at Bertone with engineering input from Giotto Bizzarrini. Power came from Chevrolet Corvette-sourced engines, giving the Grifo strong performance to match its clean, low-slung shape.





SPECS

BRAND
AUTOMODELLO

MODEL
1969 ISO GRIFO SERIES I

SERIES
ONE24

SCALE
1:24

P/N
241011

MSRP
\$249.99 (IN VERDE
AINTREE METALLIZZATO;
PRICE VARIES FOR OTHER
EDITIONS)

URL
AUTOMODELLO.COM

Automodello's replica captures that look well. The body is finished in Verde Aintree Metallizzato, with crisp trim details and properly scaled wheels. The interior is fully detailed, with attention paid to layout and materials. Like other releases in the ONE24 series, the model comes mounted on a display plinth, ready for the shelf.

Each example includes a hand-signed Certificate of Authenticity from Darren Frank, tying the model back to the enthusiast who helped guide its development. That kind of connection adds some extra appeal for collectors who follow specific marques.

Production numbers are tight. The Standard Edition is limited to 99 pieces per color, offered in Rosso Chiaro and Verde Aintree Metallizzato. The Encomium Edition drops to 49 pieces in Arancio and Argento Auteuil Metallizzato. At the very top, a Nero version is limited to just six examples.

With those numbers, this release leans heavily toward the serious collector market. Between the limited production, subject matter, and direct involvement from a marque expert, Automodello's Iso Grifo stands out as a focused, well-executed addition to any 1:24 collection.

ABOUT THE REAL CAR

The 1969 Iso Grifo Series I combined Italian styling with American V8 power. Designed by Giorgetto Giugiaro and engineered by Giotto Bizzarrini, it used Corvette-sourced engines to deliver strong performance. Low production numbers and a distinctive design make it one of the more sought-after grand tourers of its era.



BUILT TO BE SEEN

TEXT BY JAMES YORK
IMAGES BY JERRY TSAI

JADA'S PINK SLIPS LIBERTY
WALK C8 BRINGS SHOW CAR
STYLE TO 1:24 SCALE



The candy metallic red paint really sells this model: bright enough to grab your attention, but dark enough to set off the body's contours.

Jada's Pink Slips line usually leans hard into modified street machines, and this 1:24-scale 2023 Corvette C8 Liberty Walk fits that theme perfectly. Finished in candy metallic red, it takes the already-sharp shape of Chevrolet's mid-engine Corvette and pushes it in a more dramatic direction with Liberty Walk-inspired aero and stance. The result is a model that looks less like a stock sports car and more like something built for



SPECS

BRAND
JADA PINK SLIPS

MODEL
2023 CHEVROLET
CORVETTE LIBERTY
WALK

SCALE
1:24

P/N
36019

URL
JADATOYS.COM

a show display, a social media reel, or a late-night cruise spot.

What makes this release work is that the C8 already has the right proportions to carry a wide-body treatment without looking forced. The low nose, cab-forward profile, and short rear deck all give Liberty Walk's visual style a solid foundation. On this Jada replica, the widened look, deeper

body add-ons, and large rear wing give the car a more planted and aggressive presence than a standard Stingray. It is exaggerated, but that's also the point.

The metallic red finish helps sell the model. It's bright enough to catch attention immediately, but still dark enough to show off the contours on the body. That matters on a casting like this, where

“THE LOW NOSE, CAB-FORWARD PROFILE, AND SHORT REAR DECK ALL GIVE LIBERTY WALK’S VISUAL STYLE A SOLID FOUNDATION.”



the fenders, side treatment, and rear surfaces all play a big role in the overall look. It is the kind of finish that looks good in the package and continues to hold up once it's out on a shelf.

As with many Jada 1:24 releases, this one is aimed more at collectors who enjoy presence and style than those chasing total scale accuracy. That's not a knock against it. Jada has long been good at producing models that feel substantial in-hand and visually satisfying in

a display. This Corvette follows that formula well. It is bold, easy to appreciate, and instantly readable from across the room.

For collectors who like modern Corvettes, tuner culture, or Liberty Walk builds in general, this Pink Slips C8 has a lot going for it. It is a strong shelf piece with a custom look that suits the real car surprisingly well. Sometimes a die-cast does not need to be subtle to be effective. This is one of those times.

Along with faithfully replicating the Liberty Walk body treatments, this model features an opening boot, decklid, and doors, so you can inspect all the hidden details.

ABOUT THE REAL CAR

The 1:1 C8 Corvette Stingray marked a major shift for Chevrolet by moving the platform to a mid-engine layout. In Stingray form, Chevrolet rates it at up to 495 horsepower with the available performance exhaust. Liberty Walk later gave the C8 its own Silhouette Works treatment, adding a widebody kit, revised bumpers, diffusers, and a large rear wing.





- ✓ **HUGE SELECTION**
- ✓ **LOW PRICES**
- ✓ **SUPERIOR CUSTOMER SERVICE!**

As a family-owned and operated business we at DiecastModelsWholesale.com have been satisfying diecast collectors for more than 10 years. As one of the top direct distributors of diecast in the USA we are able to offer some of the most competitive prices around on the most sought-after models, and our selection is absolutely second to none. But as we have grown we have never lost our focus on providing the best personal service to our customers. Together with our experience, that commitment to customer service helped us win Dealer of the Year in 2017 from the Diecast Hall of Fame.

Visit us online or call us toll-free and give us the opportunity to show you why we are the best!

UPCOMING ARRIVALS!



NEW ARRIVALS!



DiecastModelsWholesale.com

Toll Free: 888-242-4227 • Phone: 213-614-7971 • Fax: 213-614-7973

Email: cs@diecastmodelswholesale.com • Wholesale Inquiries: wholesale@diecastmodelswholesale.com
1604 Beach Street Montebello, CA 90640

**SPECIAL
10% DISCOUNT
FOR DIE CAST X READERS**

Use Code: DIECASTXPROMO

ALL FOR PLAY

MAJORETTE'S RIDE NOW SERIES IS BUILT FOR FUN

TEXT BY JERRY TSAI
IMAGES BY JAMES YORK

The Ride Now collection spans a wide array of vehicles—from sports cars and muscle cars to commercial vehicles and aircraft. We can't wait to see what they'll add next.



Majorette's Ride Now series sits in an interesting spot in the 1:64 world. Yes, these are die-cast models with metal bodies, but this line feels aimed much more at play than at serious collecting. The assortment covers 18 different vehicles in the range, each measuring about three inches long, with a die-cast body, plastic base, and free-rolling wheels. Majorette also leans hard into variety, mixing road cars, utility trucks, emergency vehicles, and even an aircraft in one line.

While there are 18 vehicles in the entire series, we'll focus on just six of them here. The Toyota Yaris and BMW M3 Touring bring in modern passenger-car flavor, while the Chevrolet C10 adds an easy classic-truck presence. The Iveco EuroCargo gives the lineup a work-truck angle, the Dodge Charger supplies some familiar American muscle, and the Airbus H130 pushes the series beyond ordinary street traffic. That kind of spread makes it feel less like a focused collector series and more like a toybox fleet built for action.

SPECS

BRAND
MAJORETTE

SERIES
RIDE NOW SERIES

SCALE
1:64

URL
JADATOYS.COM /
MAJORETTE.COM

CMC Ferrari 250 LM

The revolution in racing car construction at Ferrari



M-261, M-262, M-263,
M-264, M-265, M-266,
M-267, M-268, M-278
CMC Ferrari 250LM.
Nine versions, nine characters.



These models are 100% collector selectable, so you can get exactly the ones you need to complete your set.

And that is really the point here. Ride Now is about mixing vehicles into a city scene, construction setup, rescue scenario, or improvised race course. The line is also sold by selectable model rather than blind assortment, so buyers can pick the exact vehicles they want instead of hunting through random packaging. That can be ideal for parents, kids, and even casual hobbyists who just want a specific casting without the usual chase.

As miniatures, these pieces look fun and recognizable, with tampo graphics, distinct body shapes, and enough detail to clearly separate one vehicle type from another. Still, they do not come across as premium shelf pieces. Our take is simple: This is not really a collectible series in the enthusiast sense. It is a fun toy line that happens to be die-cast.

And honestly, that is fine. Not every 1:64 release needs to be about rarity, accuracy, or display-case appeal. Sometimes it's enough to have a small, affordable model that rolls well, looks good from across the room, and invites you to put it on the floor and actually use it. Ride Now seems built exactly for that.



With 18 vehicles in the Ride Now lineup, there's plenty to choose from, but the BMW M3 Touring and Dodge Charger stand out as a couple of our favorites.

AUTOMODELLO™

Free Automodello Catalogue
888.212.5160 • Automodello.com

1969
ISO GRIFO



1969 CHEVROLET
KINGSWOOD ESTATE



1961
Cadillac Series 62



Coming Soon!
3 Editions, 5 Colors

FREE MUG with coupon code **26DIECASTX** WHILE SUPPLIES LAST

We Buy 1:24 Danbury/Franklin Mint, 1:18 and 1:43 Collections

WE WANT YOUR DIECAST!

Save yourself the stress of tire-kickers, scammers, refund requests, transit damage, and porch pirates.



4.9 ★★★★★ 598 Google reviews



We make selling your collection easy
Call 1-866-285-5840 today!

Sellmytrains.com

TOKYO TREASURE



EXPLORING TOKYO'S PACKED DIE-CAST SHELVES & COLLECTOR HOTSPOTS

RE HUNT

TEXT & IMAGES BY JERRY TSAI

Shopping for die-cast in Tokyo is an experience that can quickly turn from casual browsing into a full-on hunt. The city's retail landscape blends new releases, rare finds, and long-discontinued models into a collector's environment that feels hard to match anywhere else. Whether you're after modern castings or vintage pieces, Tokyo delivers in both variety and volume.

What stands out immediately is the sheer selection. Walk into almost any hobby shop or department store and you'll find shelves filled with brands from all across the world. Japanese staples like Tomica, Ebbro, and Kyosho are well-represented, often with exclusive releases you won't easily find outside Japan. At the same time, international names such as Hot Wheels, Matchbox, and Minichamps line the shelves alongside them, creating a truly global mix in one place.



On these pages:
Located in the heart of Tokyo, Tamiya Plamodel Factory is packed with model-kits, RC cars, and die-cast collectibles.

Bottom right: Tamiya Plamodel Factory even has a rotating collection of 1:1-scale vehicles on display. When we visited, the store displayed a Honda RA273 from the 1966 and 1967 Formula 1 race seasons.



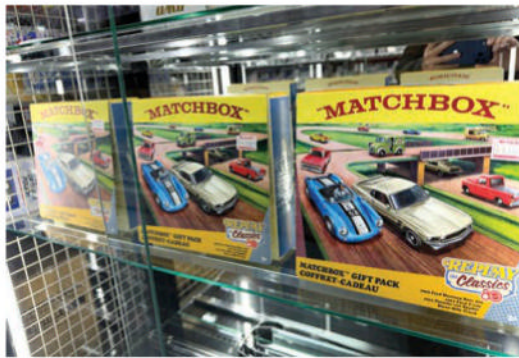
A highlight of our visit was a stop in Shinbashi at Spark, a shop well-known in collector circles. The store focuses heavily on premium and motorsport models, with detailed replicas that appeal to serious enthusiasts.

Directly across the street sits the Tamiya Plamodel Factory, which adds another layer to the experience. Between the two, it's easy to lose track of time as you pore over

display cases and scan stacked shelves. This part of the city alone feels like a destination for die-cast fans.

Beyond specialty shops, the broader retail scene is just as impressive. An official Tomica store offered a deep lineup of current models and exclusive items, while department stores carried well-curated selections that mix toys with collectible-grade pieces. Even a stop at Toys "R"





Us revealed aisles packed with die-cast options, reinforcing how accessible the hobby is across different types of retailers.

Then there's the secondary market, which is where Tokyo really separates itself from the rest of the world. Reseller shops throughout the city stock everything from loose vintage cars to mint-in-box rarities. It's not unusual to find older releases sitting next to newer ones, giving col-

lectors the chance to fill gaps in their collections without relying on online auctions. Prices vary widely, but the opportunity to see and inspect models in person adds real value.

Put it all together, and Tokyo lives up to its reputation. For die-cast collectors, it's not just a shopping trip—it's a deep dive into one of the most complete and accessible markets on the planet.

Die-cast hunting in Japan is incredible. We found troves of die-casts from brands such as Hot Wheels, Matchbox, Tomica, and even some brands that we've never heard of before.

ALWAYS BET ON BLACK

**JOHNNY LIGHTNING
MERCEDES-AMG GT3**

TEXT BY JAMES YORK
IMAGES BY JERRY TSAI





SPECS

BRAND
JOHNNY LIGHTNING

MODEL
MERCEDES-AMG GT3
(BLACK)

SCALE
1:24

P/N
JL24020

MSRP
\$26.99

URL
AUTOWORLDSTORE.COM



The deep front splitter and prominent rear wing and diffuser complete a silhouette that is all business.

Johnny Lightning's 1:24-scale Mercedes-AMG GT3 in black brings a modern endurance racer into a format that's easy to appreciate on the shelf. Rather than leaning on bright race liveries, this release takes a cleaner approach, letting the GT3 platform's shape and proportions do most of the work.

Finished in an all-black livery, the model leans into a stealthy, understated look that highlights the shape of the car rather than relying on busy graphics. The long hood, wide stance, and aggressive aero package are all well-represented. Up front, the Panamericana-style grille and deep front splitter give the model a proper race-ready presence, while the

rear wing and diffuser complete the GT3 silhouette in a way that looks right—even at a glance.

In hand, the model's 1:24 scale strikes a nice balance. It's large enough to appreciate details like the sculpted vents, race-style wheels, and low-profile tires, but still compact enough for shelf or desk display. Johnny Lightning keeps things straightforward here—this isn't a fully opening, highly detailed premium piece—but the proportions and overall finish carry the model. The gloss-black paint is evenly applied, and the trim details are clean, which goes a long way on a monochromatic car like this.

“IT'S SIMPLE,
GOOD-LOOKING,
AND CAPTURES
THE ESSENCE
OF THE REAL
CAR...”



Collectors who typically focus on classic American subjects may find this an interesting departure, while European performance fans will appreciate seeing a modern GT3 platform represented in an accessible format. It also works well as a standalone display piece thanks to its clean, no-nonsense presentation.

For those building out a mixed display of racecars or modern performance machines, this AMG GT3 fits right in. It's simple, good-looking, and captures the essence of the real car without overcomplicating things.



The model's 1:24 scale makes it large enough to appreciate the nicely finished details like sculpted vents, racing wheels, and low-profile tires.

THE REAL CAR

The Mercedes-AMG GT3 is a customer racing car built to FIA GT3 regulations and based on the road-going AMG GT. Powered by a naturally aspirated 6.3-liter V8, it's designed for durability and balance over long races, competing in series like IMSA and GT World Challenge.



www.carneyplastics.com

THE SERIOUS COLLECTOR'S CHOICE SINCE 1986

1-800-372-6688

Custom Display Cases Available!

24/43



21/24A



DISPLAY CASE STANDS



12/18



108/64



MADE IN USA

Since 1986

Shop Online Today

carneydisplaycase.com

protectopak.com

PROTECTO PACK COVERS



Available in:

- 12 pcs..
- 24 pcs..
- 48 pcs..
- 240 pcs..

DISPLAY CASES FOR ALL COLLECTIBLES • See our LARGE selection at...www.carneyplastics.com

GO BIG!

HOT WHEELS XL EL SEGUNDO COUPÉ

TEXT & IMAGES BY JERRY TSAI





SPECS

BRAND
HOT WHEELS XL

MODEL
EL SEGUNDO COUPÉ

SCALE
1:43

URL
[HOTWHEELS.COM](https://www.hotwheels.com)

Hot Wheels collectors are used to seeing the brand work in 1:64 scale, so the new XL line stands out right away. Hot Wheels XL is a 1:43-scale series that essentially takes familiar mainline castings and enlarges them while carrying over their general look, deco treatment, and wheel style. That alone makes the line worth a closer look, especially for collectors who have long wondered what some of Hot Wheels' modern fantasy castings might feel like in a larger format.

One of the most interesting early entries is the El Segundo Coupé. The casting itself began life as a Hot Wheels original design by Sonny Fisher and was first produced in 2023. Fellow Hot Wheels nerds may recognize this retro-futuristic coupe as the wheeled version of the Coupe Clip, carrying over an identical tampo and a very similar overall appearance. That connection is part of what makes this release fun. For Hot Wheels fans who recognized the Coupe Clip right away, the XL El Segundo Coupé morphs it into a substantial piece you can actually park on a shelf.

What works especially well here is the design itself. The El Segundo Coupé has the proportions of a small European-inspired sports coupe, with



Not only is the Hot Wheels XL car bigger, but the packaging is as well.



The tampo on the El Segundo Coupé lends the car the look of a European rally racer from the 1960s.



To get an idea of the XL's large scale, here's a standard Hot Wheels Mainline parked next to it.

hints of 1960s club racing style mixed in with the exaggerated stance that makes it unmistakably Hot Wheels.

In 1:64 scale that character already comes through, but the XL version gives the design more presence. It is easier to appreciate the shape of the roofline, the curve of the fenders, and the graphic treatment that ties it back to the smaller release. The larger size also makes it more satisfying to handle. It feels less like a tiny collectible that you have to be careful with and more like something you can pick up, examine, and even roll across the desk without overthinking it.

That may be the strongest argument for Hot Wheels XL. It is not trying to replace mainlines, premiums, or higher-end collector pieces. Instead, it offers a different kind of enjoyment. The El Segundo Coupé shows exactly why that works. It has the same playful design energy as the standard casting, but the larger 1:43 format makes it more noticeable in a display and more fun in the hand. If this is the direction Hot Wheels wants to take with XL, we would be glad to see the line grow.



VETTE COUPE



The 1967 Corvette® Stingray™ stands as a true icon of American performance and design. Finished in elegant Marina Blue, it features a striking blue-and-white interior accented by white leather bucket seats. Beneath the hood lies a formidable 427-cubic-inch V8 engine, delivering an impressive 435 horsepower through a 4-speed manual transmission. Distinctive side pipes, a bold White Stinger hood, and classic Chevy® Rally Wheels wrapped in redline tires complete the aggressive, unmistakable look of this two-door legend. The L71 option catapulted the 1967 Corvette® into automotive legend. This high-performance setup combined a big-block V8 with a Tri-Power system—three two-barrel carburetors—delivering an astonishing 435 horsepower. With only 3,754 Corvettes equipped with the L71 that year, it remains one of the rarest and most coveted configurations among serious speed enthusiasts.

- High Quality Die-cast Metal
- Detailed Chassis and Interior
- Removable Hardtop
- Opening Doors, Hood, & Trunk
- Detailed Engine
- Steerable Front Wheels



Don't Miss These Other Auto World Releases!

'79 Dodge Adventurer Sweptline
#AMM1355



TRUE 1:64 2026 Release 1 (A&B Versions Available)
#AW64532



Cruise by your local hobby store,
or see our entire selection of
available replicas online at:
autoworldstore.com



Ford Motor Company Trademarks and Trade Dress used under license to Round 2, LLC. GENERAL MOTORS Trademarks used under license to Round 2, LLC. DODGE and related logos, vehicle model names and trade dress are trademarks of FCA US LLC and used under license by Round 2 LLC. ©2025 FCA US LLC. AMERICAN MUSCLE is a registered trademark of TOMY International, Inc. used under license to Round 2, LLC. ©2025 TOMY International, Inc. All rights reserved. AW AUTO WORLD and design is a registered trademark of Round 2, LLC. ©2025 Round 2, LLC, South Bend, IN 46628 USA. Product and packaging designed in the USA. Made in China. All rights reserved.