

CHIEF'S SHOP PLAN OF THE WEEK

SIMPLE WOODWORKING: KID'S TOTE



WHAT YOU'LL NEED

LUMBER

- 1 - 1 x 3 x 2
- 1 - 1 x 6 x 2
- 1 - 3/4" round dowel

(availability will vary)

HARDWARE/SUPPLIES

- 1/4" dowel pins
 - wood glue
 - paint/stain
- #### TOOLS
- miter saw
 - drill/driver with 7/8" Forstner bit
 - 1/4" bit
 - wooden mallet or hammer
 - clamps
 - square

ABOUT THESE PLANS

On this first page you will see above the project complete. On the last page you'll find the finished outer dimensions. Be sure to read ALL of the project steps before you start.

To the right is a list of the Lumber, Hardware/Supplies, and Tools you will need to complete this project. A measuring tape and pencil are not included because that should be pretty standard and self explanatory.

Below What You'll Need is the Parts list. This also is included on the Cutting Diagram page, which is the last page of this plan document.

Throughout these plans you'll find the icons below:



LAYOUT

This indicates a diagram detailing the dimensions of a project part and/or the placement for pocket holes, screws, nails, etc.



NOTE

Notes are the instructions for a particular step/section of the project.



TAKE CARE!

This indicates when to pay close attention to the diagrams, take precautions for safety, etc.



PARTS



- Ends (2)** - 3/4 x 5 1/2 x 5 1/2
- Bottom (1)** - 3/4 x 5 1/2 x 10
- Rails (2)** - 3/4 x 2 1/2 x 10
- Handle (1)** - 3/4 x 12 1/2

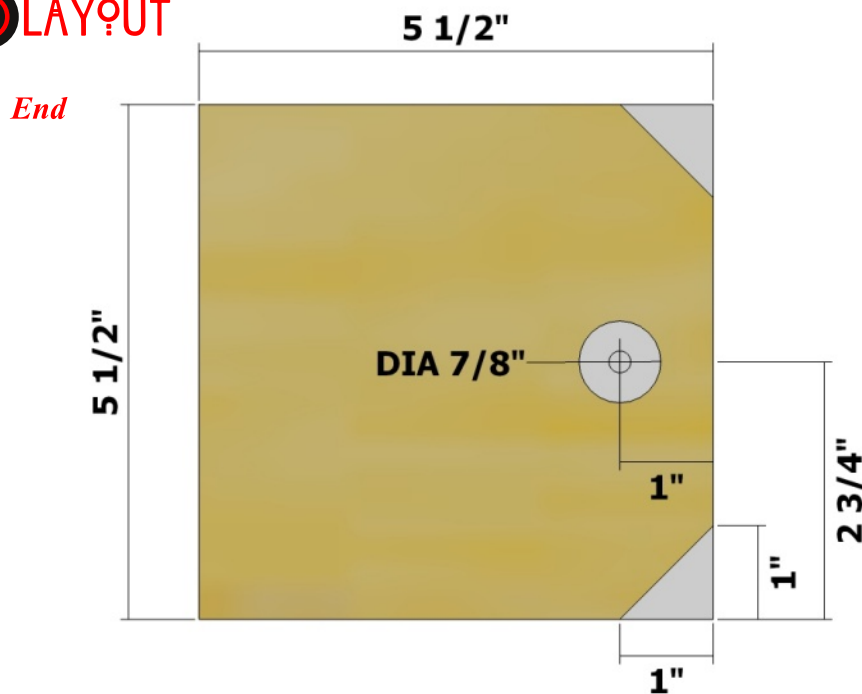
All parts are listed in actual dimensions. Refer to the Cutting Diagram on the last page of this plan as a guide for determining the specific board from which to cut the parts.



MORE PLANS

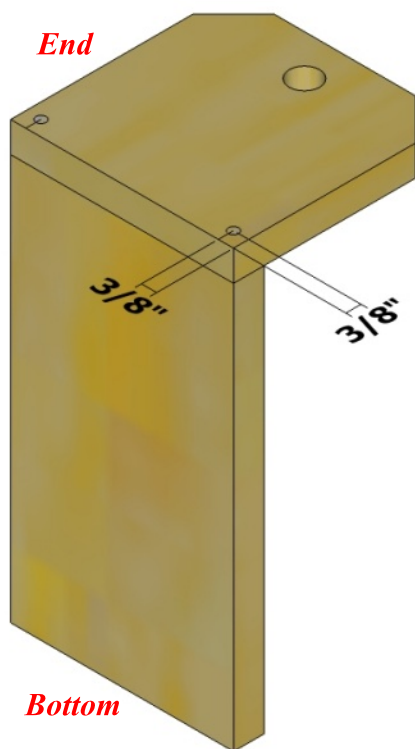
Want more Chief's Shop plans? Visit chiefs-shop.com and look through the Plans section. Be sure to "Like" Chief's Shop on facebook by heading over to facebook.com/ChiefsShop.

LAYOUT



NOTE

Use the layout as a guide for measuring, marking, and cutting the **Ends**. Drill a 7/8-inch hole as indicated. The corners are cut at a 45-degree angle.

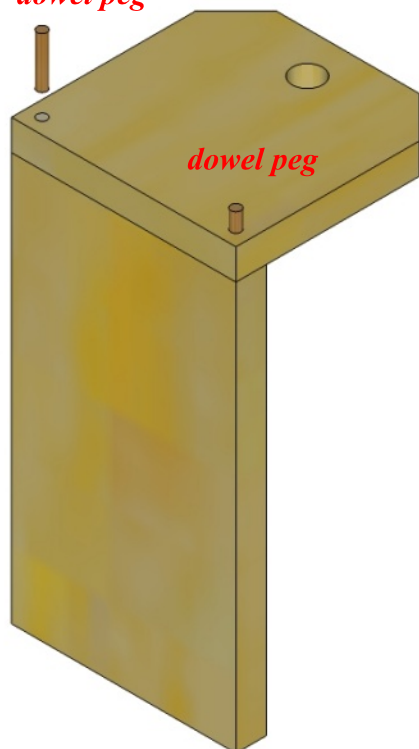


NOTE

Position one **End** flush with the end of the **Bottom** as shown at left. Clamp in place and drill 1/4-inch holes 1 1/4-inch deep as shown at left.

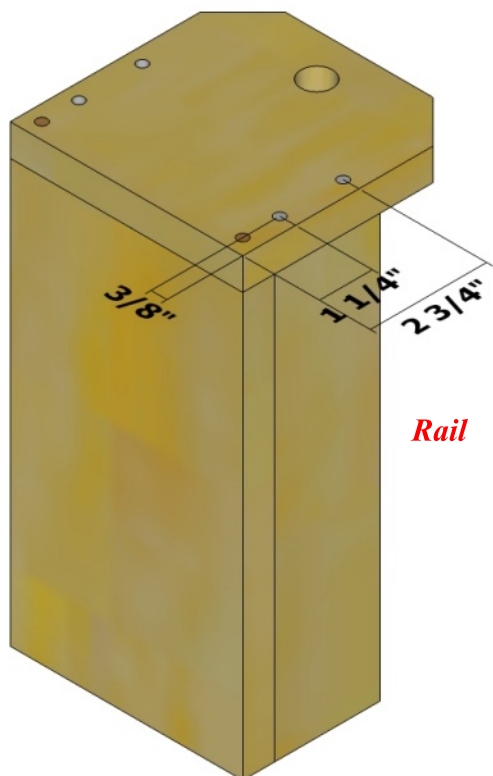
Tip: Wrap a piece of tape around your drill bit to mark the depth to which you need to drill.

dowel peg



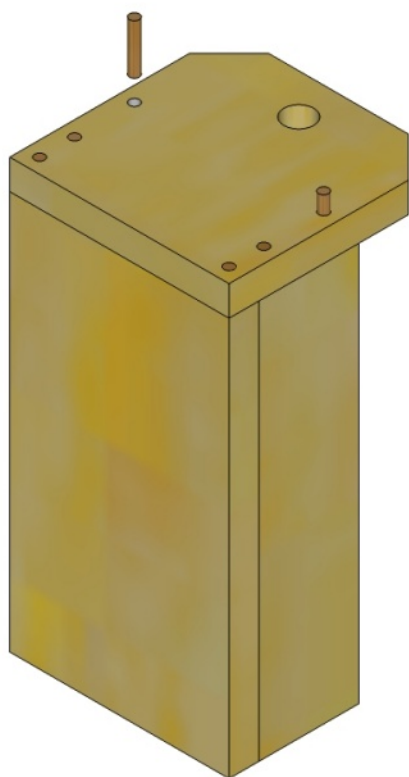
NOTE

If desired, apply glue to the holes. Tap in 1/4-inch **dowel pegs** into the holes. Use a wooden mallet to drive in the pegs. If you don't have a wooden mallet, place a piece of scrap wood over the pegs and use a light-duty hammer.



NOTE

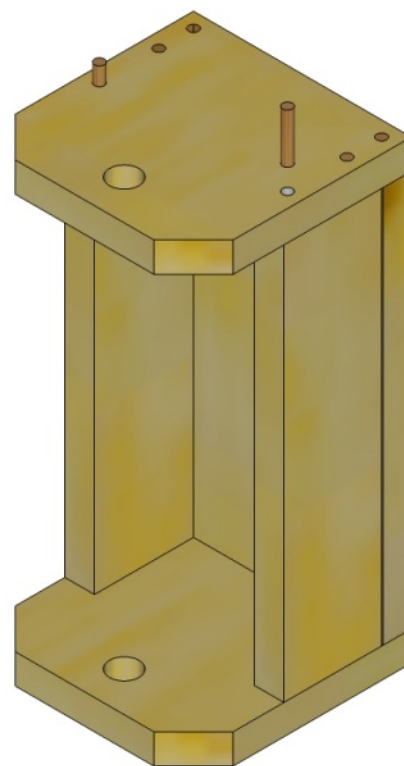
Position the **Rails** as shown at left, clamp in place, and drill 1/4-inch holes 1 1/4-inch deep where indicated.



NOTE

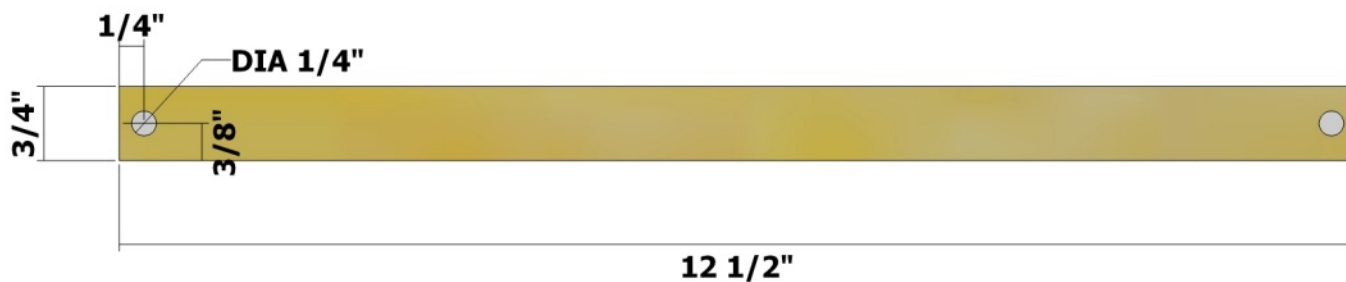
Tap in 1/4-inch **dowel pegs** into the holes. As shown at left.

Repeat the process with the other **End** on the other side of the assembly as shown at right.



LAYOUT

Handle

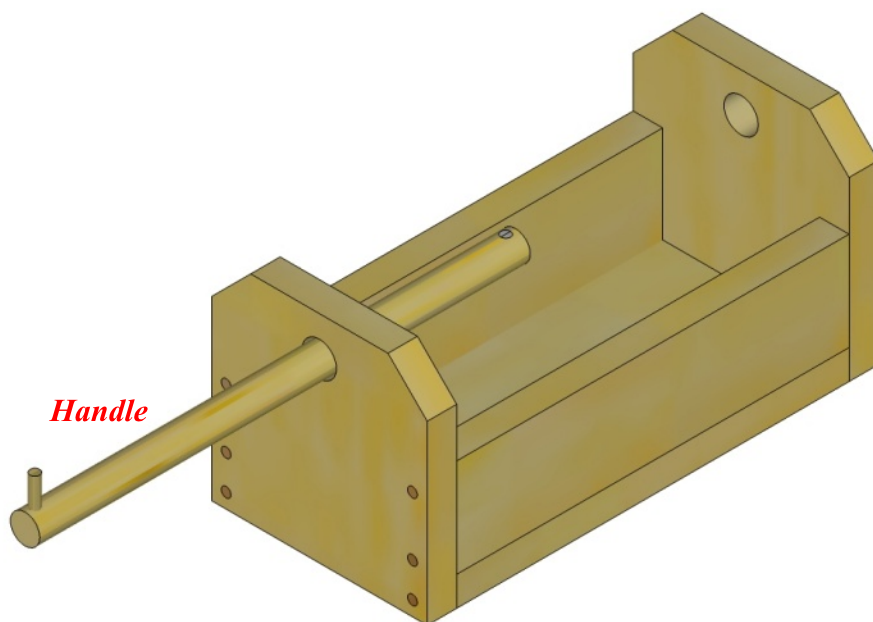


NOTE

Use the layout as a guide for measuring, marking, and cutting the **Handle**. Drill 1/4-inch holes 1/2-inch deep as indicated.

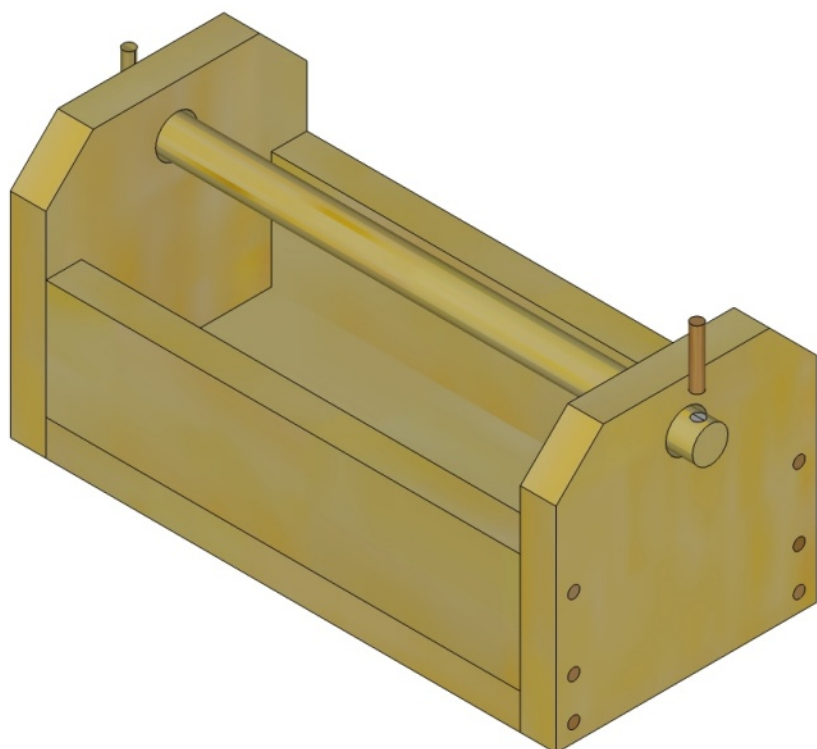
 **NOTE**

Tap in a 1/4-inch **dowel peg** into one of the holes in the **Handle**. Slide the **Handle** through the holes in the **Ends** as shown at right.

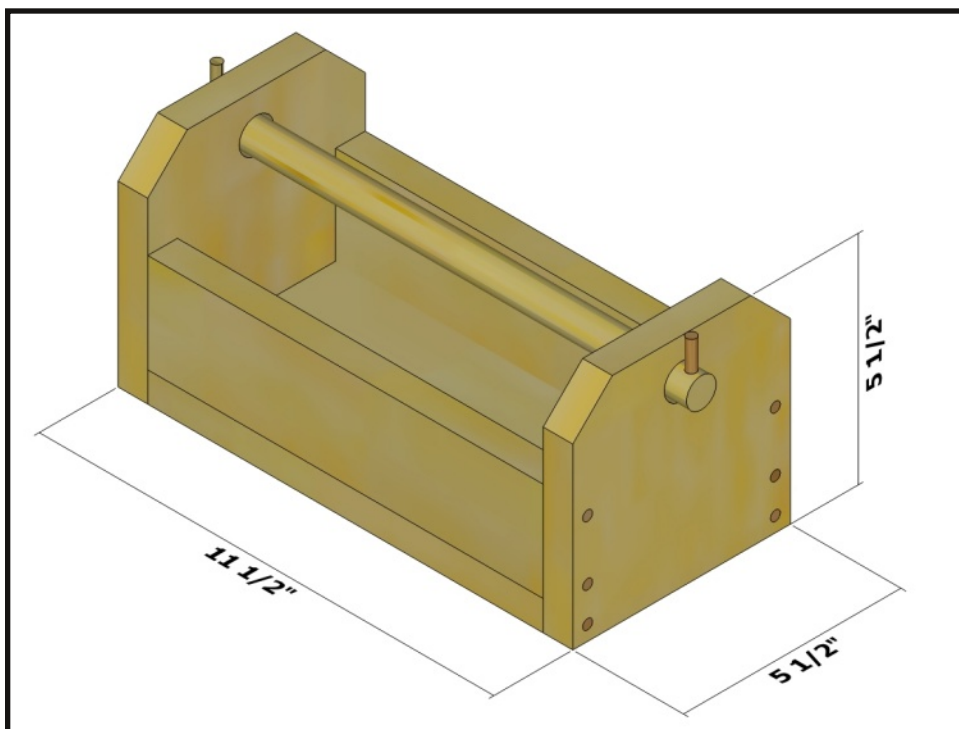
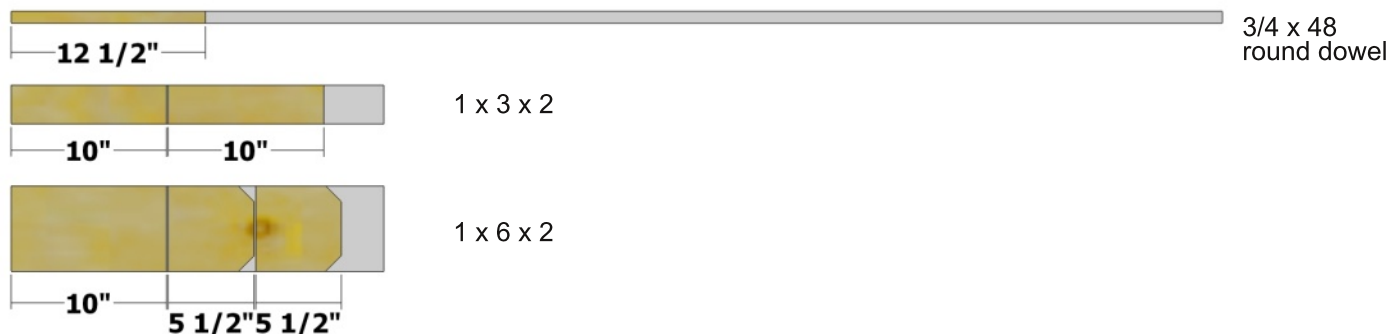


 **NOTE**

Tap in another 1/4-inch **dowel peg** into the other hole in the **Handle**.



K CUTTING DIAGRAM



PARTS

Ends (2) - 3/4 x 5 1/2 x 5 1/2
Bottom (1) - 3/4 x 5 1/2 x 10
Rails (2) - 3/4 x 2 1/2 x 10
Handle (1) - 3/4 x 12 1/2

All parts are listed in actual dimensions. Refer to the Cutting Diagram on the last page of this plan as a guide for determining the specific board from which to cut the parts.

TAKE CARE!

Follow ALL SAFETY GUIDELINES AND RECOMMENDATIONS provided by the manufacturers of your tools, and any chemicals such as glue and finishes you use in this project. YOU are responsible for your safety, so use common sense when working in the shop!