



**Want to reach a captive woodworking  
and crafting audience?**

*Then be a sponsor of*

**CHIEF'S SHOP**

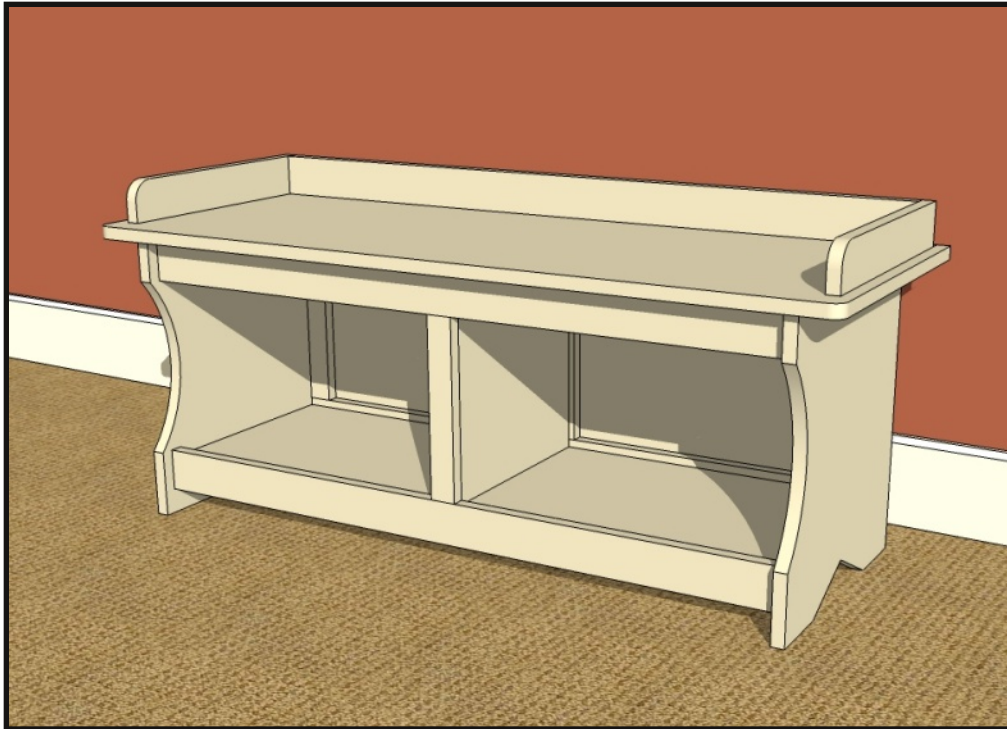
Plan of the Week

Contact Chris Hill for more details  
[chief@chiefs-shop.com](mailto:chief@chiefs-shop.com)  
205-432-8013

# CHIEF'S SHOP PLAN OF THE WEEK



## SIMPLE WOODWORKING: ENTRY STORAGE BENCH



### ABOUT THESE PLANS

On this first page you will see above the project complete. On the last page you'll find the finished outer dimensions. Be sure to read ALL of the project steps before you start.

To the right is a list of the Lumber, Hardware/Supplies, and Tools you will need to complete this project. A measuring tape and pencil are not included because that should be pretty standard and self explanatory.

Below What You'll Need is the Parts list. This also is included on the Cutting Diagram page, which is the last page of this plan document.

Throughout these plans you'll find the icons below:



**LAYOUT** This indicates a diagram detailing the dimensions of a project part and/or the placement for pocket holes, screws, nails, etc.



**NOTE** Notes are the instructions for a particular step/section of the project.



**TAKE CARE!** This indicates when to pay close attention to the diagrams, take precautions for safety, etc.



### MORE PLANS

Want more Chief's Shop plans? Visit [chiefs-shop.com](http://chiefs-shop.com) and look through the Plans section. Be sure to "Like" Chief's Shop on facebook by heading over to [facebook.com/ChiefsShop](https://www.facebook.com/ChiefsShop).

### WHAT YOU'LL NEED



#### LUMBER

- 1 - 1 x 2 x 4
- 3 - 1 x 3 x 8
- 1 - 3/4" x 4' x 4'  
sheet of plywood
- 1 - 1/4" x 2' x 4'  
sheet of plywood

(availability will vary)

#### HARDWARE/SUPPLIES

- 2" brads
- 1 1/4" pocket hole screws
- 1 1/4" brads
- 3/4" brads
- pocket hole plugs
- wood glue
- wood filler
- paint/stain

#### TOOLS

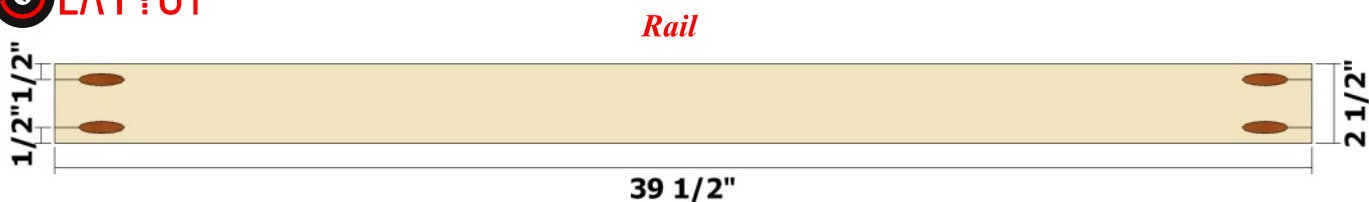
- table saw w/crosscut sled or circular saw with Kreg Rip-Cut
- miter saw
- jigsaw
- pneumatic nailer/hammer drill/driver
- Kreg Pocket Hole Jig
- clamps
- square
- compass

### PARTS

- Rails (4)** - 3/4 x 2 1/2 x 39 1/2
- Stiles (4)** - 3/4 x 1 1/2 x 10 1/2
- Legs (2)** - 3/4 x 16 x 17
- Cleats (3)** - 3/4 x 2 1/2 x 13
- Bottom (1)** - 3/4 x 13 x 39 1/4
- Back (1)** - 1/4 x 15 1/4 x 39 1/4
- Divider (1)** - 3/4 x 13 x 13 1/2
- Seat (1)** - 3/4 x 17 1/2 x 45 3/4
- Seat Ends (2)** - 3/4 x 2 1/2 x 15
- Seat Back (1)** - 3/4 x 2 1/2 x 42 3/4

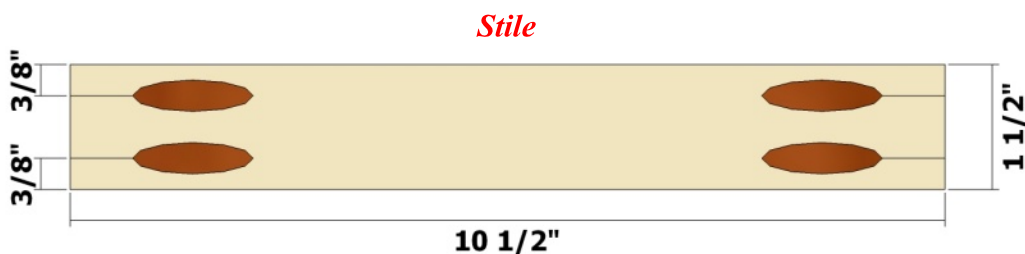
*All parts are listed in actual dimensions. Refer to the Cutting Diagram on the last page of this plan as a guide for determining the specific board from which to cut the parts.*

**LAYOUT**



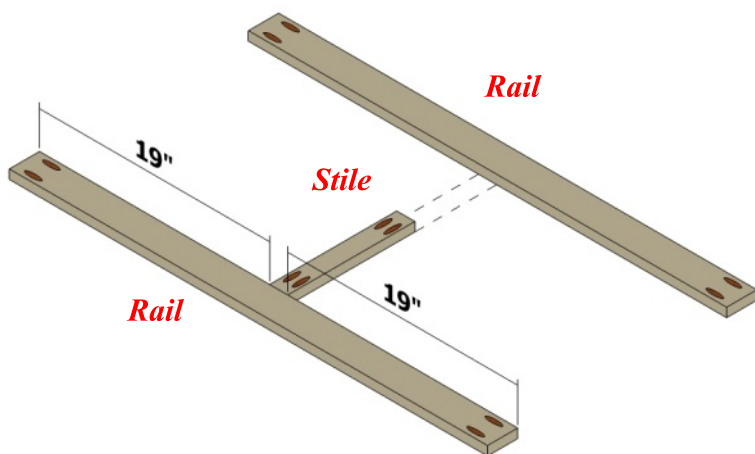
**NOTE**

Use the layouts as guides for measuring, marking, cutting and drilling pocket holes in the **Rails** and **Stiles**. Be sure to set your pocket hole jig and drill bit for 3/4-inch stock.



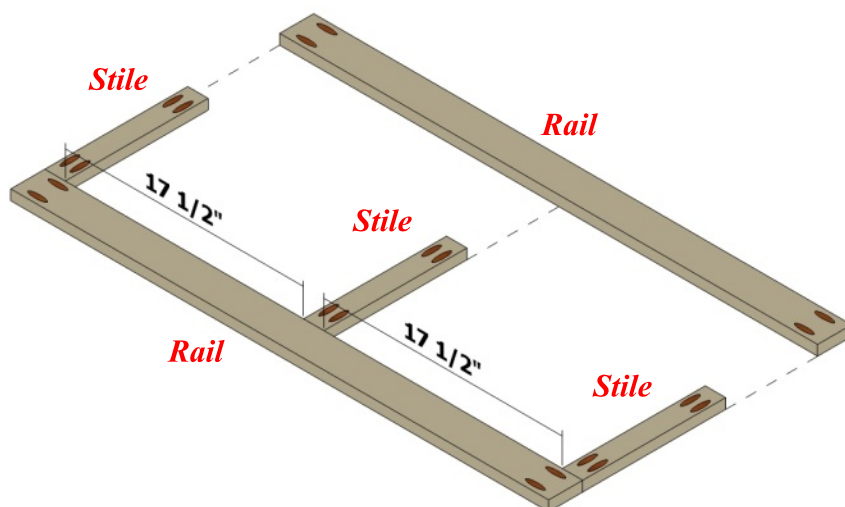
**NOTE**

Position a **Stile** centered on two **Rails** as shown at left, and attach using glue and 1 1/4-inch pocket hole screws.



**NOTE**

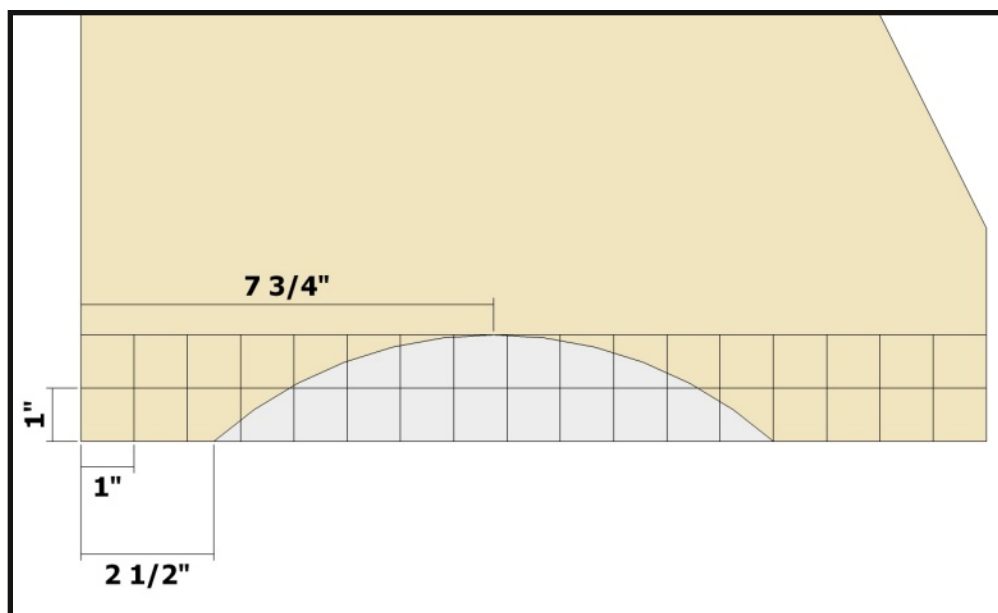
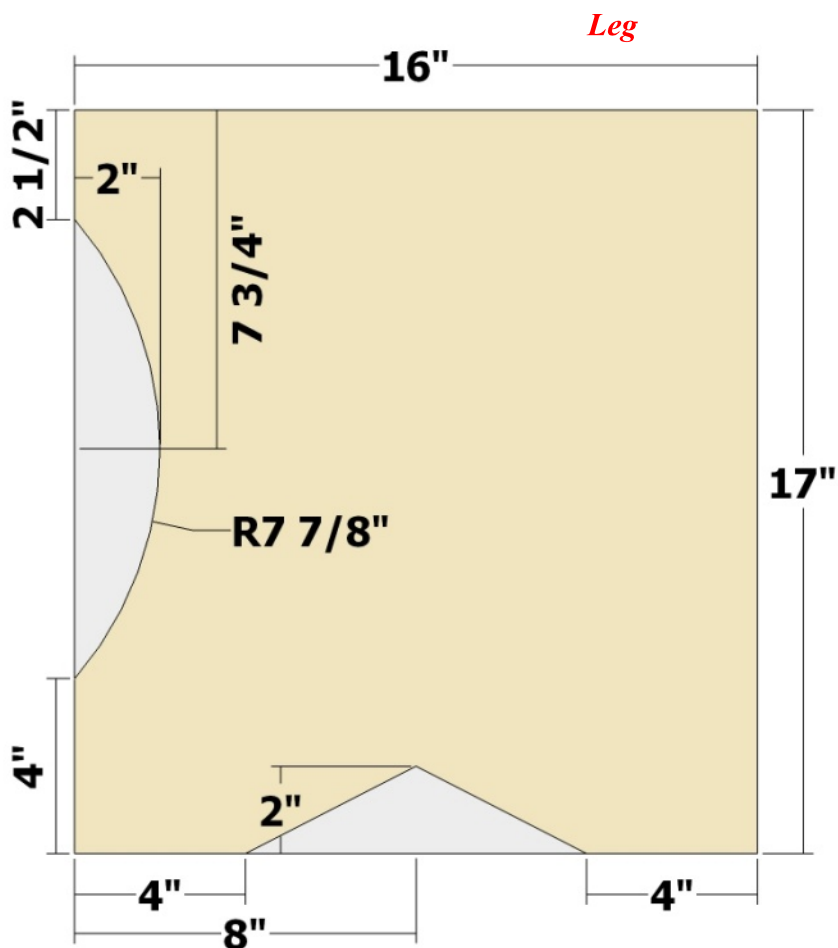
Position the remaining **Stiles** as shown at right (one centered, two flush with the ends of two **Rails**), and attach using glue and 1 1/4-inch pocket hole screws.

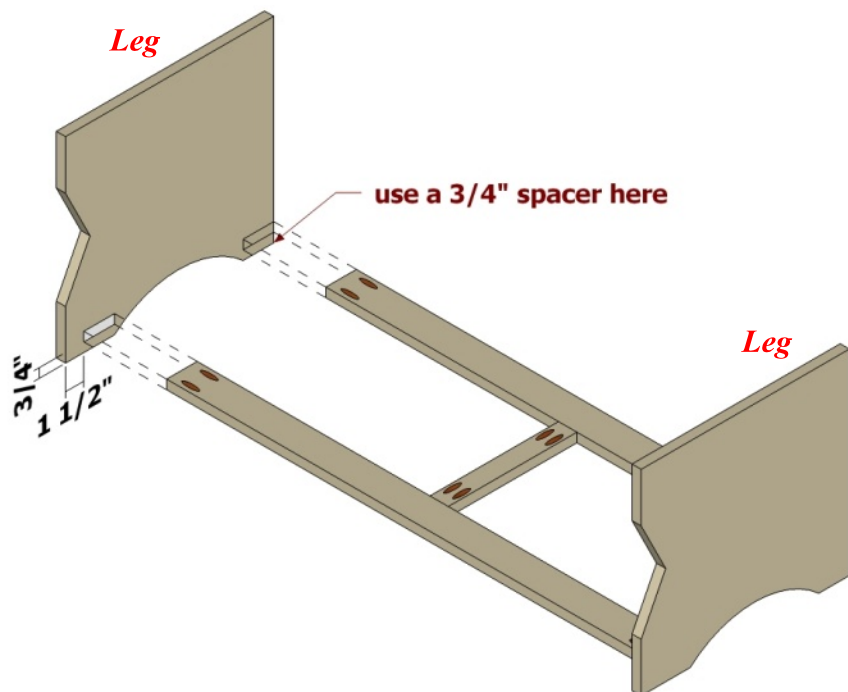


**LAYOUT**

**NOTE**

Use the layouts as guides for measuring, marking, and cutting the **Legs**.





**NOTE**

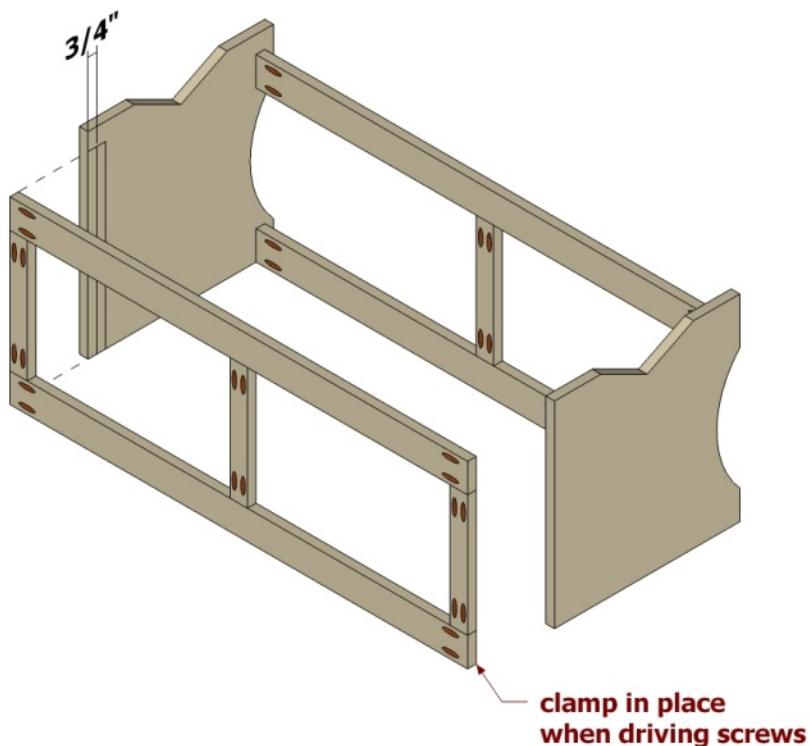
Position the assembly with one **Stile** as shown at left and attach to the **Legs** using glue and 1 1/4-inch pocket hole screws.

Use a piece of 3/4-inch scrap to position the assembly and be sure to clamp in place.

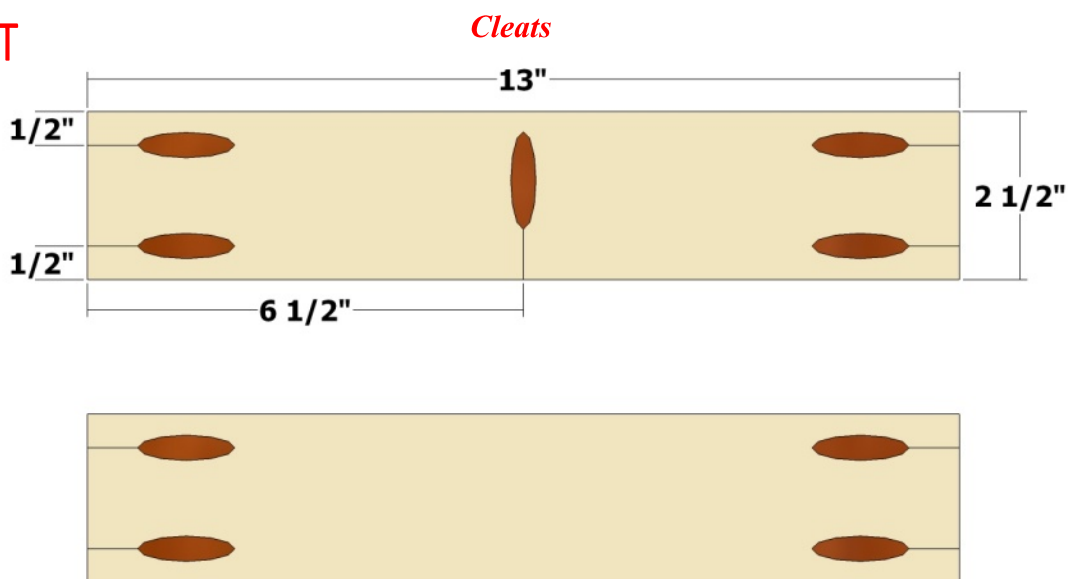
**NOTE**

Position the remaining rail/stile assembly as shown at right and attach to the **Legs** using glue and 1 1/4-inch pocket hole screws.

Use a piece of 3/4-inch scrap as a spacer to position the assembly and be sure to clamp in place. Make sure you apply glue to the edges of the outer **Stiles** as well, and clamp those in place until the glue sets. As an option, you can drive 2-inch nails/brads through the **Stiles** and into the **Legs**.



**LAYOUT**



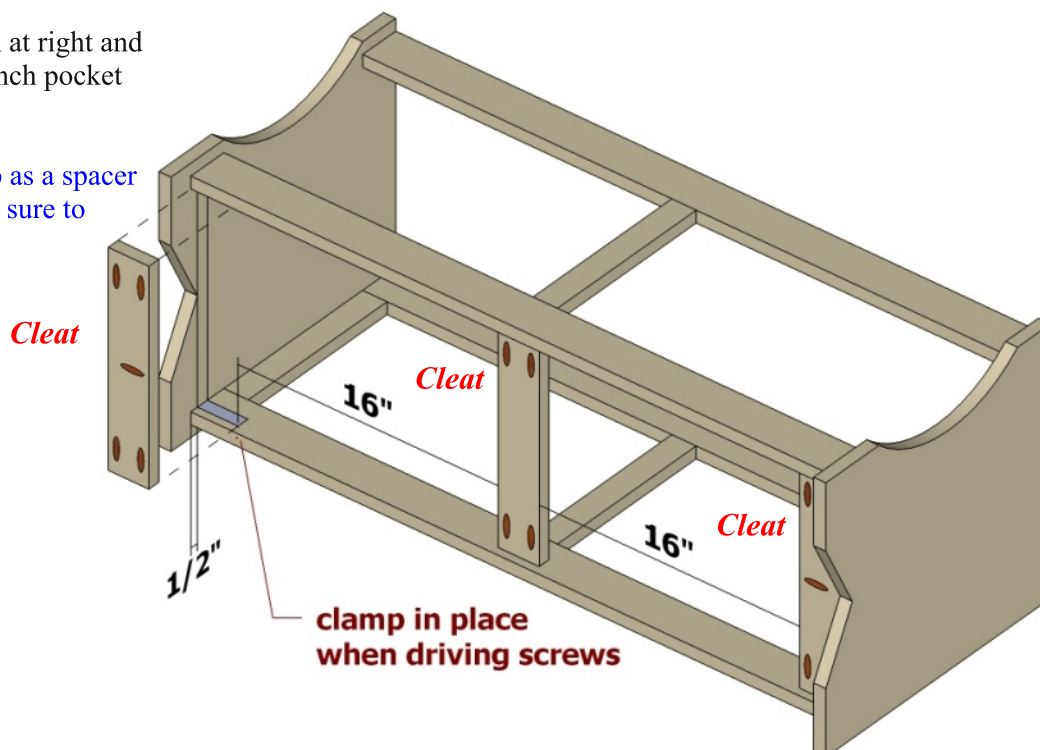
**NOTE**

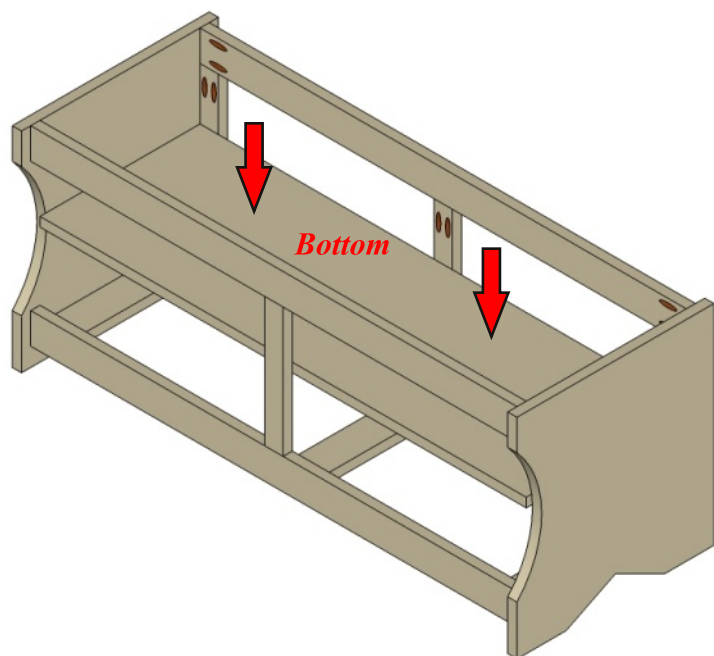
Use the layouts as guides for measuring, marking, cutting and drilling pocket holes in the **Cleats**. Create two of the top **Cleats**, and one of the bottom **Cleat**. Be sure to set your pocket hole jig and drill bit for 3/4-inch stock.

**NOTE**

Position the **Cleats** as shown at right and attach using glue and 1 1/4-inch pocket hole screws.

Use a piece of 1/2-inch scrap as a spacer to position the **Cleats** and be sure to clamp in place.



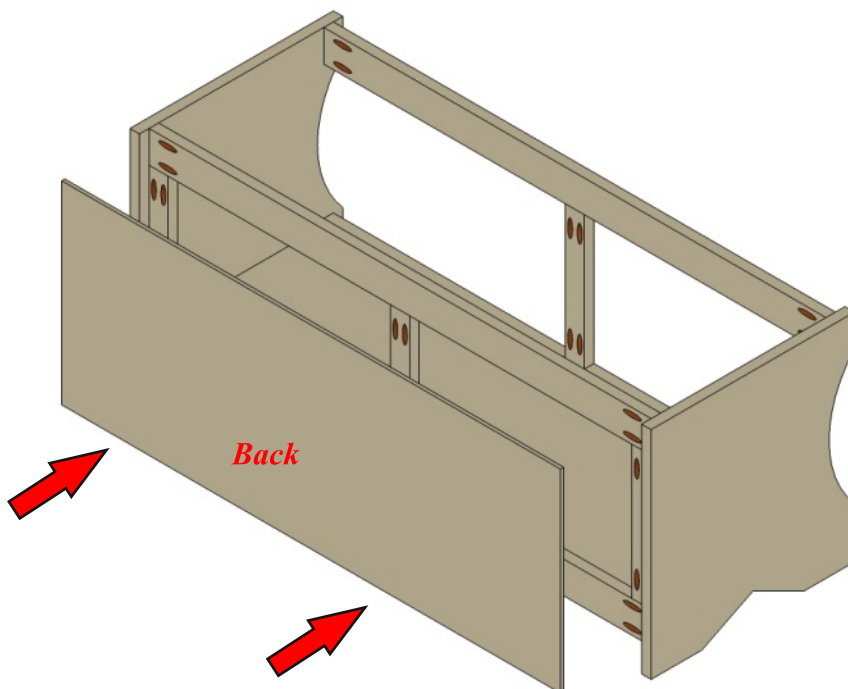


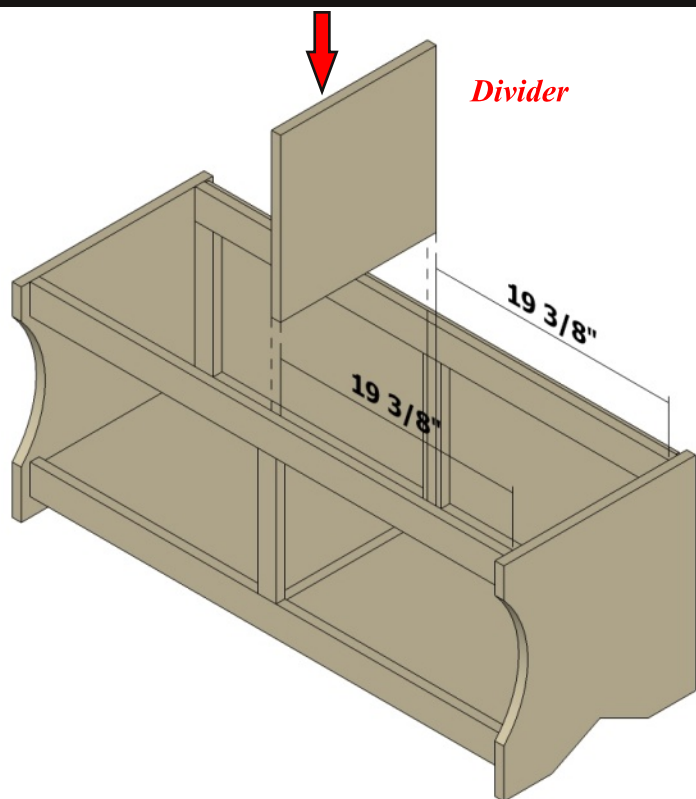
 **NOTE**

Position the **Bottom** as shown at left (flush against the **Cleats**) and attach using glue and 1 1/4-inch brads driven into the **Cleats**.

 **NOTE**

Position the **Back** as shown at right (centered on the rear portion of the assembly) and attach using glue and 3/4-inch brads driven into the **Rails** and **Stiles**.



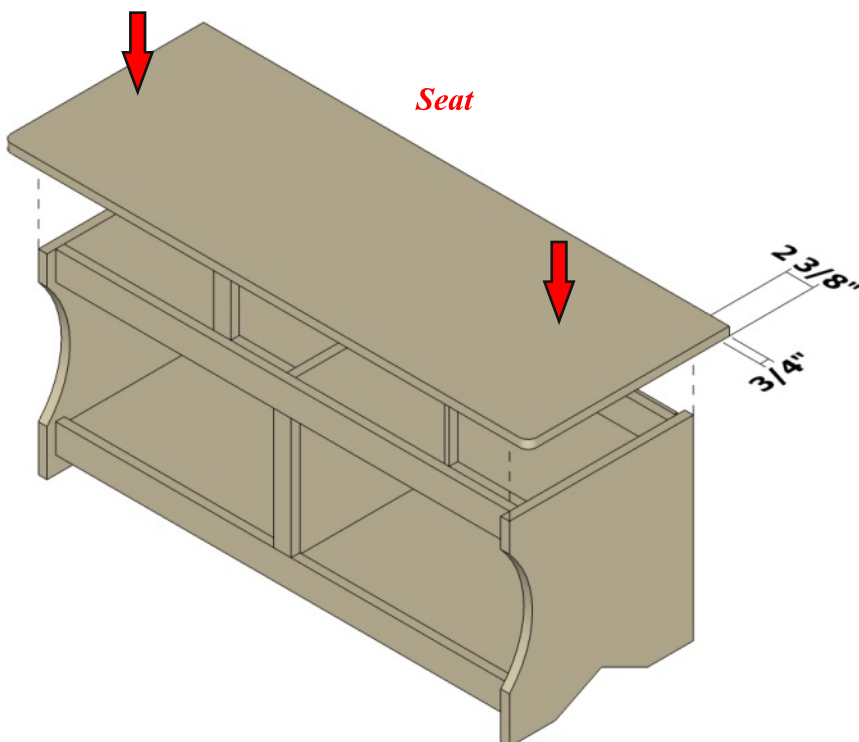


 **NOTE**

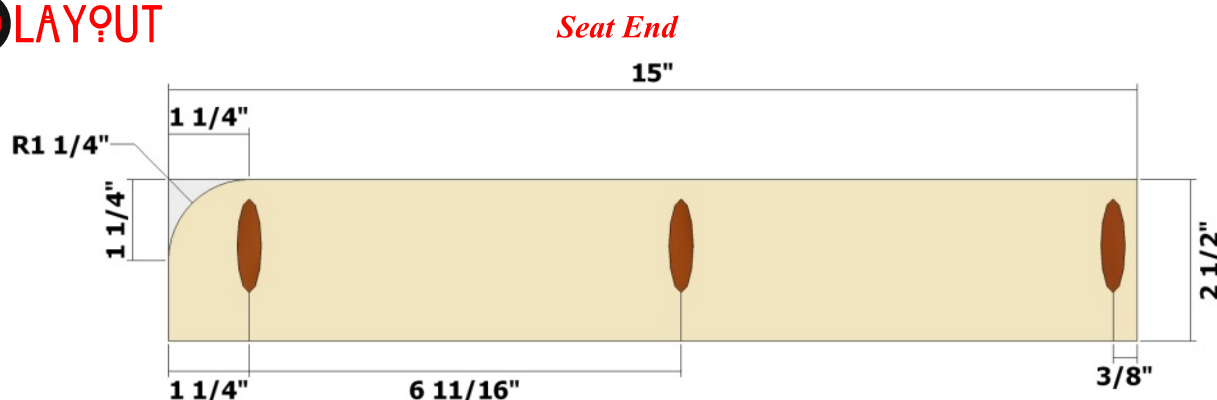
Position the **Divider** as shown at left (centered in the assembly) and attach using glue and 2-inch brads driven through the front **Stile** and through the **Back** and rear center **Stile**. Make sure you mark a centerline as a guide for driving the brads.

 **NOTE**

Position the **Seat** as shown at right (centered in the assembly) and attach using glue and 2-inch brads driven through the front **Seat** and into the **Legs, Rails, and Divider**. Make sure you mark a guide line for driving the brads.



**LAYOUT**

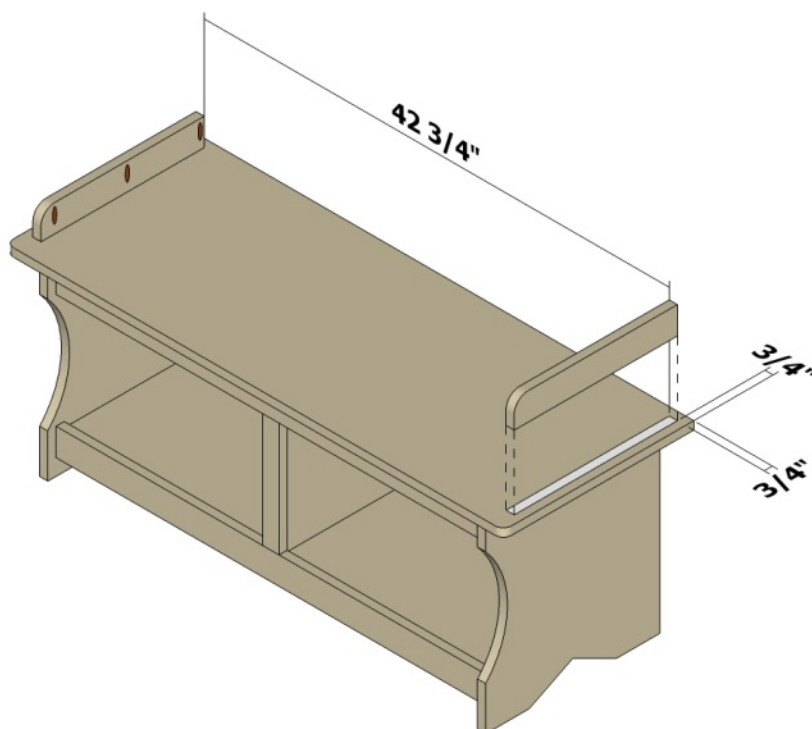


**NOTE**

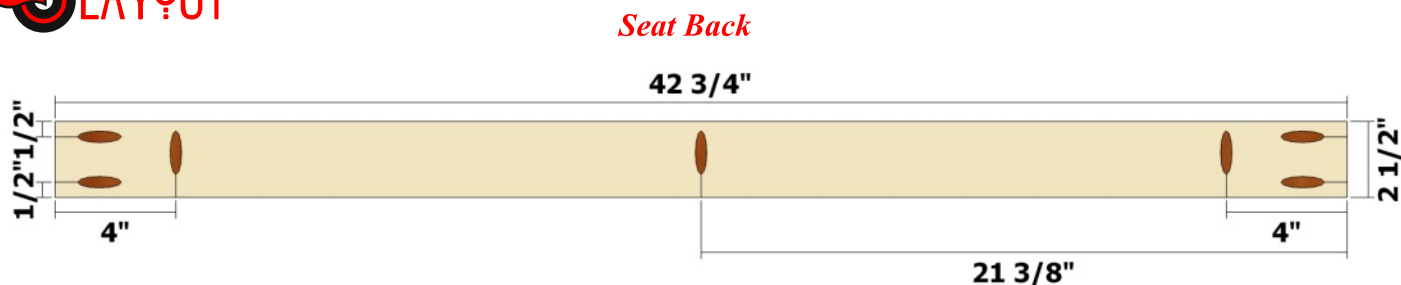
Use the layout as a guide for measuring, marking, cutting and drilling pocket holes in the **Seat Ends**. Create one of the **Seat Ends** as a mirror image of the one shown above. Be sure to set your pocket hole jig and drill bit for 3/4-inch stock.

**NOTE**

Position the **Seat Ends** as shown at right and attach using glue and 1 1/4-inch pocket hole screws.



**LAYOUT**

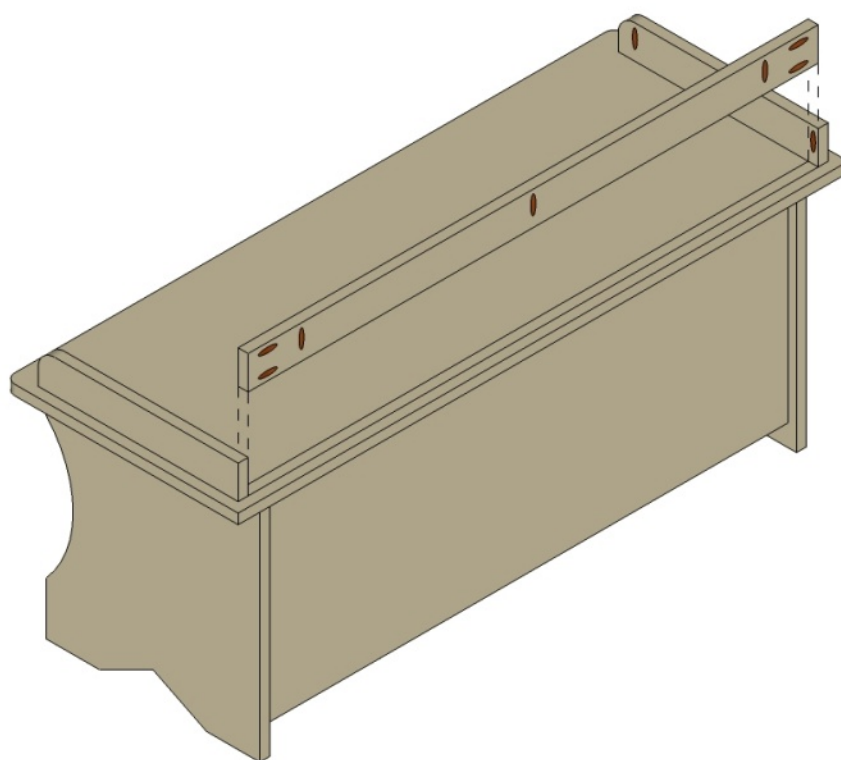


**NOTE**

Use the layout as a guide for measuring, marking, cutting and drilling pocket holes in the **Seat Back**. **DO NOT cut this part until you check the measurement between the Seat Ends and adjust as needed.** Be sure to set your pocket hole jig and drill bit for 3/4-inch stock.

**NOTE**

Position the **Seat Back** as shown at right and attach using glue and 1 1/4-inch pocket hole screws. The ends of the Seat Back will cover up the last pocket hole on the Seat Ends.

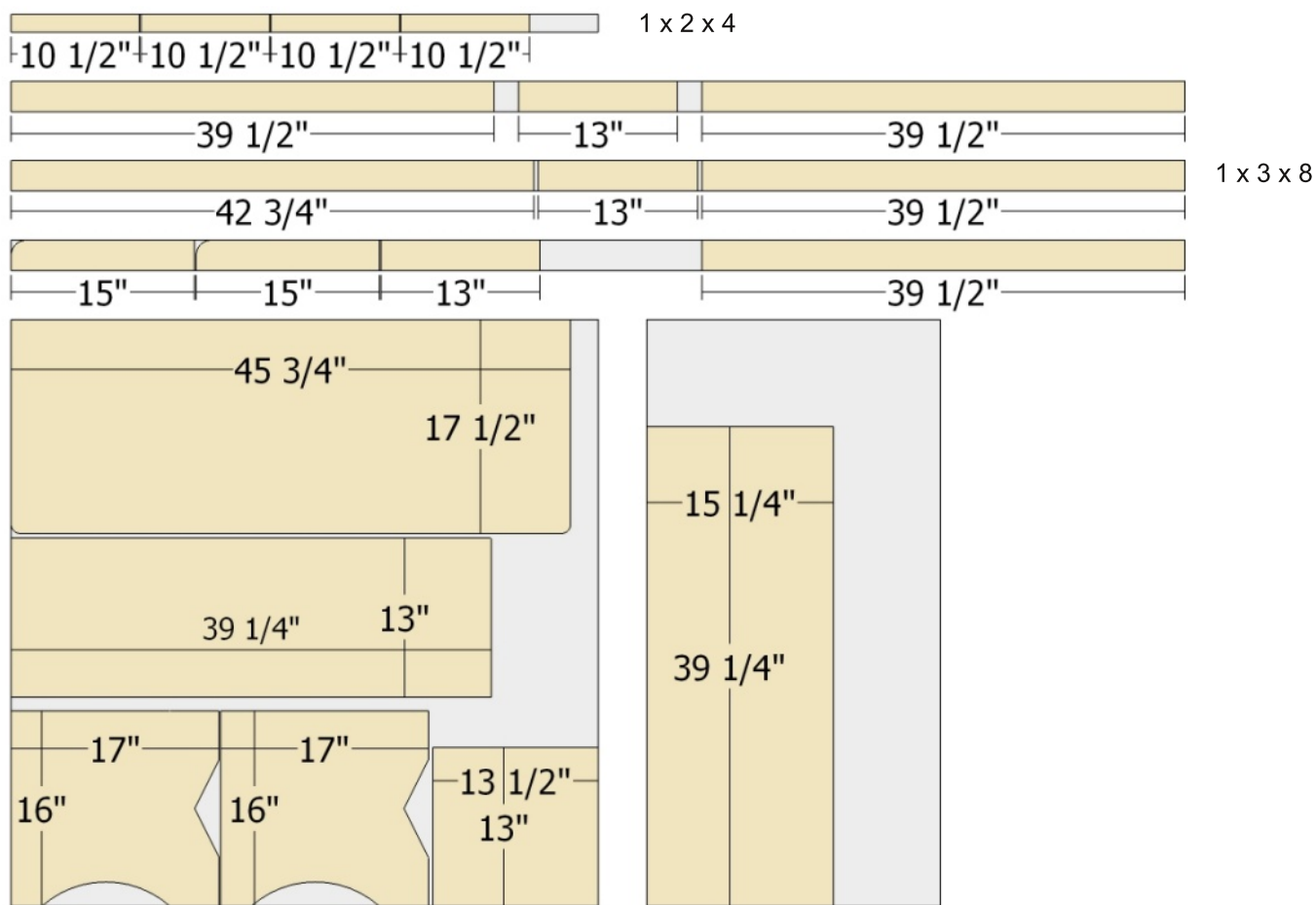


**NOTE**

Use pocket hole plugs to fill the pocket holes in the **Seat Back** and **Seat Ends**, and apply your desired finish. Add a seat cushion for additional seat comfort.

To learn how to make your own pocket hole plugs, visit <https://chiefs-shop.com/html/videos.html> for a tutorial.

# K CUTTING DIAGRAM



3/4 x 4 x 4 sheet of plywood (availability will vary)

1/4 x 2 x 4 sheet of plywood

## PARTS

- Rails (4)** - 3/4 x 2 1/2 x 39 1/2
- Stiles (4)** - 3/4 x 1 1/2 x 10 1/2
- Legs (2)** - 3/4 x 16 x 17
- Cleats (3)** - 3/4 x 2 1/2 x 13
- Bottom (1)** - 3/4 x 13 x 39 1/4
- Back (1)** - 1/4 x 15 1/4 x 39 1/4
- Divider (1)** - 3/4 x 13 x 13 1/2
- Seat (1)** - 3/4 x 17 1/2 x 45 3/4
- Seat Ends (2)** - 3/4 x 2 1/2 x 15
- Seat Back (1)** - 3/4 x 2 1/2 x 42 3/4

All parts are listed in actual dimensions. Refer to the Cutting Diagram on the last page of this plan as a guide for determining the specific board from which to cut the parts.

## TAKE CARE!

*Follow ALL SAFETY GUIDELINES AND RECOMMENDATIONS provided by the manufacturers of your tools, and any chemicals such as glue and finishes you use in this project. YOU are responsible for your safety, so use common sense when working in the shop!*

