

CELEBRATING

40
YEARS

WOODSHOP

SHAPING THE SUCCESSFUL SHOP™

www.woodshopnews.com

FEBRUARY 2026

NEWS®

The upmarket pivot

Northland Woodworks ditched low-margin builder cabinets for high-end custom work after recession revealed new opportunities

Going beyond
basic cabinets

Precision tools
that measure up

Sanding machines
for problem surfaces

NEW TOOLS

- Festool PROfile abrasives
- Felder 700 sliders with PCS
- Guffey Flex Spray Connect
- Oneida Filter Shaker

\$3.95 (Canada, \$5.95)



OVERBUILT. NOT OVERPRICED



**ANDERSON SPECTRUM-M SERIES 48
COMPACT FOOTPRINT,
INDUSTRIAL GRADE**



SPECTRUM-M 48-4'X8' CNC ROUTER COMPLETE PACKAGE

- FANUC OiMF Controller System with PC Front , Handheld, & AGMVP
- FANUC Electronics, Drives, and Servos with 2-year warranty
- 12HP 4-Pole Air Cooled Router Spindle with Aggregate Capability
- 6 Spindle Vertical Multi-Drill Block is standard
- 6 Position Aggregate Capable Tool Changer pick-up station is standard
- 6 HSK-63F Tool Holders, 6 Chuck Nuts, 6 Collets are included
- Automatic Tool Length Measuring Device is standard
- 9HP Becker Vacuum Pump with Duplex Vertical Rack for 2nd pump
- Automatically Controlled, High Flow Vacuum Table with 3 pop-up-pins
- Vacuum Grid Table - Ready for Pods, Clamps, or Spoil Boards
- 60M/min Feed Speeds with 85M/min combined axis movements
- Lifetime Technical Phone Support & Online Remote Diagnostics
- Includes Freight, Installation, Training, Travel, Lodging, & multi-tap transformer
- Pre-wired for Pusher/Sweeper & Automatic Material Conveyor
- Includes Anderson's AGMVP Simplified User Interface Software for ease of use
- Also Available in 5'x10' & 5'x12 sizes with automatic multi-zone tables
- Costs less than you imagine. Delivers more than you expect.

ANDERSON AMERICA INC. 
Anderson Group

10620 Southern Loop Blvd.
Pineville, NC 28134

P: 704.522.1823

E: sales@andersonamerica.com

www.AndersonAmerica.com



FANUC



Solutions for every home
**ALL UNDER
ONE BOOTH**



From smart storage to finely engineered accessories, Rev-A-Shelf® creates solutions that make every space smarter, sleeker, and effortlessly functional. With breakthrough ideas, premium craftsmanship, and a portfolio that spans lighting, pullouts, brackets, wood hoods and more, if it belongs in a cabinet, closet or kitchen, we make it!

Step into one booth where true kitchen innovation comes together. Rev-A-Shelf® unifies organization, integrated lighting and premium wood products into a single elevated experience, all under one booth! Intuitive pullouts, crafted hoods and subtle illumination all working together to inspire.



REV-A-SHELF
Innovation through Organization™

NKBA | KBIS Feb. 17–Feb. 19
ORLANDO 2026

VISIT US AT KBIS 2026!
BOOTH # W328

TEN \$10,000 WOODSHOP GRANTS

For Independent Furniture Makers

- ✓ US-Based woodworkers
- ✓ In the early stages of building out an independent business
- ✓ In need of a boost for sustainability and growth

HOW TO APPLY

Tell us your woodworking and shop journey so far with photos via email to grants@paulandpascale.com by March 31, 2026. Follow on Instagram @pauledelman

**RECIPIENTS SELECTED AND NOTIFIED
BY END OF APRIL 2026**

GRANTS MADE BY END OF MAY

Presented by

Paul and Pascale Edelman

Not affiliated with Active Interest Media Inc., publisher of Woodshop News
Visit paulandpascale.com for Terms and Conditions

Table of Contents



Jennifer Hicks (top, cover)

30

Features

- 14 GOING BEYOND BASIC CABINETS:** New hardware and storage systems that address common pain points while improving accessibility.
- 30 THE UPMARKET PIVOT:** Northland Woodworks ditched low-margin builder cabinets for high-end custom work after recession revealed new opportunities.
- 34 MEASURE SMARTER:** Innovative squares, gauges and digital systems take the guesswork out of workshop precision.
- 42 SANDING PROBLEM SURFACES:** Specialized machines address inconsistent surfaces, complex profiles and production bottlenecks.

News Desk

- | | | | |
|----|--|----|---|
| 8 | Michigan woodworking school raises \$16.5M for campus expansion. | 10 | Builder confidence edges up. |
| 10 | Kitchen trends favor technology. | 12 | WOOD MARKETS: Black walnut sales stay steady. |




Woodshop News, (ISSN 0894-5403, U.S.P.S. 000-966), Vol. XXXX, NO. 3, is published monthly by Active Interest Media, Holdco, Inc. The known office of publication is 2143 Grand Ave., Des Moines, IA 50312. Periodicals postage paid at 2143 Grand Ave., Des Moines, IA 50318-9652, and additional mailing offices. \$21.95 for one year; \$35.95 for two years (Canadian subscribers add \$12 per year for postage; U.S. funds, foreign subscribers add \$14 per year for postage; U.S. funds). Postmaster: Send address changes to WOODSHOP NEWS, PO Box 37274, Boone, IA 50037-0274. Printed in the U.S.A. POSTMASTER: Send all UAA to CFS. (See DMM 507.1.5.2); NON-POSTAL AND MILITARY FACILITIES: Woodshop News, Circulation Department, PO Box 37217, Boone, IA 50037.

RAZORGAGE

PRECISION SIMPLIFIED



OPTIMIZE YOUR WORKFORCE

-  Reduce Waste
-  Minimize Rework
-  Improve Efficiency

Click Here
to watch
videos &
learn more!



RG



MARTIN

Woodworking Machines



Quality
Made in
Germany



T12 T27

The T27 Flex simplifies setup with touchscreen control and tool conversion, while the compact T12 offers premium features and precision engineering for diverse applications.

Discover our range of machines and Accessoires for your workshop.



www.martin-usa.com

info@martin-usa.com, 8715 Sidney Circle, Suite 100 Charlotte, NC 2829, 704-921-0360



42

Tools & Techniques

- 22 Felder adds PCS to 700 sliding table saw series.
- 23 New Festool abrasives target intricate surface work.
- 24 Flex Spray Connect offers scalable solution.
- 24 Oneida's Filter Shaker automates dust collector maintenance.



34



14

Departments

- 6 Taking Stock
- 20 Finishing
- 25 New Products
- 47 At the Galleries
- 49 Calendar
- 53 Marketplace
- 55 Advertiser Index
- 56 Out of the Woodwork

Visit us online at www.woodshopnews.com

BLOGS



Over the Workbench

Talkin' shop with former editor A.J. Hamler

2026 Online Resource Guide
<http://resourceguide.woodshopnews.com>

- **Contact Customer Service**
www.woodshopnews.com/subscribe
- **Tools & Machinery**
www.woodshopnews.com/tools-machines
- **Contact the Staff**
www.woodshopnews.com/contact-us
- **Advertising Information**
www.woodshopnews.com/advertise

PREMIUM SHARPENING SERVICES

For all types of woodworking tooling including:

- Saw Blades
- Planer & Jointer Knives
- Router Bits
- CNC Spiral &
- Shaper Cutters
- Compression Bits



QUICK TURN-AROUND & COMPETITIVE PRICING

Connecticut Saw & Tool is one of the most experienced and capable tool sharpening facilities in the U.S. Professional woodworkers from all over the country send their woodworking tools to CST. We pride ourselves on our decades of experience, as well as using the best equipment available. Our highly trained staff utilizes fully CNC controlled machinery, ultra high grit diamond wheels and oil coolant ensuring your

100% satisfaction guaranteed!

We also offer the BEST tooling with the BEST discounts from top manufacturers - in stock & ready to ship same-day!

Call or email for pricing & up-to-date availability



Call Today! 800.404.1220
Free Shipping One Way

140 Avon Street • Stratford, CT 06615
info@ctsaw.com • www.CTSAW.com



Northtech, AW Machinery strike dealer agreement

By Tod Riggio

Northtech and AW Machinery have announced a strategic partnership designed to expand access to Northtech's woodworking machines throughout Pennsylvania and surrounding regions.

AW Machinery will become an authorized dealer for Northtech products. In return, AW Machinery has agreed to discontinue its proprietary Stonewood-branded line.

"We are excited to unite with AW Machinery to bring Northtech's robust line of machinery to a broader audience in Pennsylvania," said Alex Dillon, national sales manager of Northtech. "This partnership reflects our commitment to delivering durable, high-value equipment conveniently to customers who demand quality and reliability."

"By offering Northtech equipment through our new AW Machinery East showroom, we can now provide our customers in the Pennsylvania area with a broader, more consistent line of machines — supported by our local sales and service team," said Isaac Roth at AW Machinery. "We believe this shift will better meet the needs of our customers by partnering with Northtech, while strengthening our service capabilities across the region."

Charles G.G. Schmidt & Co. is celebrating its 100th year in the woodworking tool business.

"For 100 years, the Schmidt Company has been manufactur-

ing and distributing high quality woodworking tools for all stages of woodworking," the company said. "From our modest beginning in a fourth-floor location in downtown New York City to our home now in Montvale, New Jersey, we have become a trusted name for quality tools and solutions.

"Combined with years of experience in the sales and manufacturing departments and keeping current with the latest CNC equipment, we can help solve your production problems. Servicing one-man shops to large architectural woodworking companies, Schmidt has both stock and custom-made tooling of all types. Made-to-order knives for your particular machine, insert tools, molder and shaper heads, Esta Knives and accessories are just some of the tools and services we provide."

The company's catalog is available at cgggschmidt.com.

Richelieu has introduced a new product lineup featuring its collaboration with Granberg, a European manufacturer of accessible kitchen and living solutions.

The partnership "marks an exciting step forward in Richelieu's mission to bring inclusive, design-driven innovation to the North American market," the company said.

Products include the Butler 730 pushbutton wardrobe lift, the Base-lift 6600 height-adjustable worktop system and the Verti 840 motorized lift for upper cabinets. **W**

EDITOR TOD RIGGIO
ART DIRECTOR CHRIS CIRILLI
STAFF WRITER JENNIFER HICKS
CONTRIBUTING WRITERS
JOHN ENGLISH, DAVID GETTS AND TED BRUNING

SALES & MARKETING
PUBLISHER
RORY BEGLIN
203-952-6790; rory@woodshopnews.com

CLASSIFIED MARKETPLACE ADVERTISING
203-952-6790
marketplace@woodshopnews.com



SENIOR VICE PRESIDENT, CONTENT **ROB YAGID**
GROUP ADVERTISING DIRECTOR, WOODWORKING
ALEX ROBERTSON
DIRECTOR, DATA, AUTOMATION, AND AUDIENCE
MATTHEW BOYLES
ADVERTISING SALES COORDINATOR **JULIE DILLON**
CIRCULATION, FULFILLMENT MANAGER **JAMES JACKSON**
DIGITAL INFORMATION & MARKETING TECHNOLOGY MANAGER
DORIAN HENAO



CHAIRMAN & CEO **ANDREW W. CLURMAN**
CHAIRMAN EMERITUS **EFREM ZIMBALIST III**
CHIEF FINANCIAL OFFICER **ADAM SMITH**
SENIOR VICE PRESIDENT, MARKETING **ERICA MOYNIHAN**
VICE PRESIDENT, CIRCULATION **PAIGE NORDMEYER**
SENIOR VICE PRESIDENT, SALES **MIKE BURNS**
VICE PRESIDENT, SALES OPERATIONS **CHRISTINE NILSEN**
VICE PRESIDENT, DIGITAL PRODUCT DEVELOPMENT **ASHLEY MACDONALD**
VICE PRESIDENT, STRATEGY & RESEARCH **KRISTINA SWINDELL**
DIRECTOR, HUMAN RESOURCES **SCOTT ROEDER**
DIRECTOR, PRODUCTION **PHIL GRAHAM**
DIRECTOR, RETAIL SALES **SUSAN A. ROSE**
TECHNOLOGY OPERATIONS ANALYST **MICHAEL LEWIS**

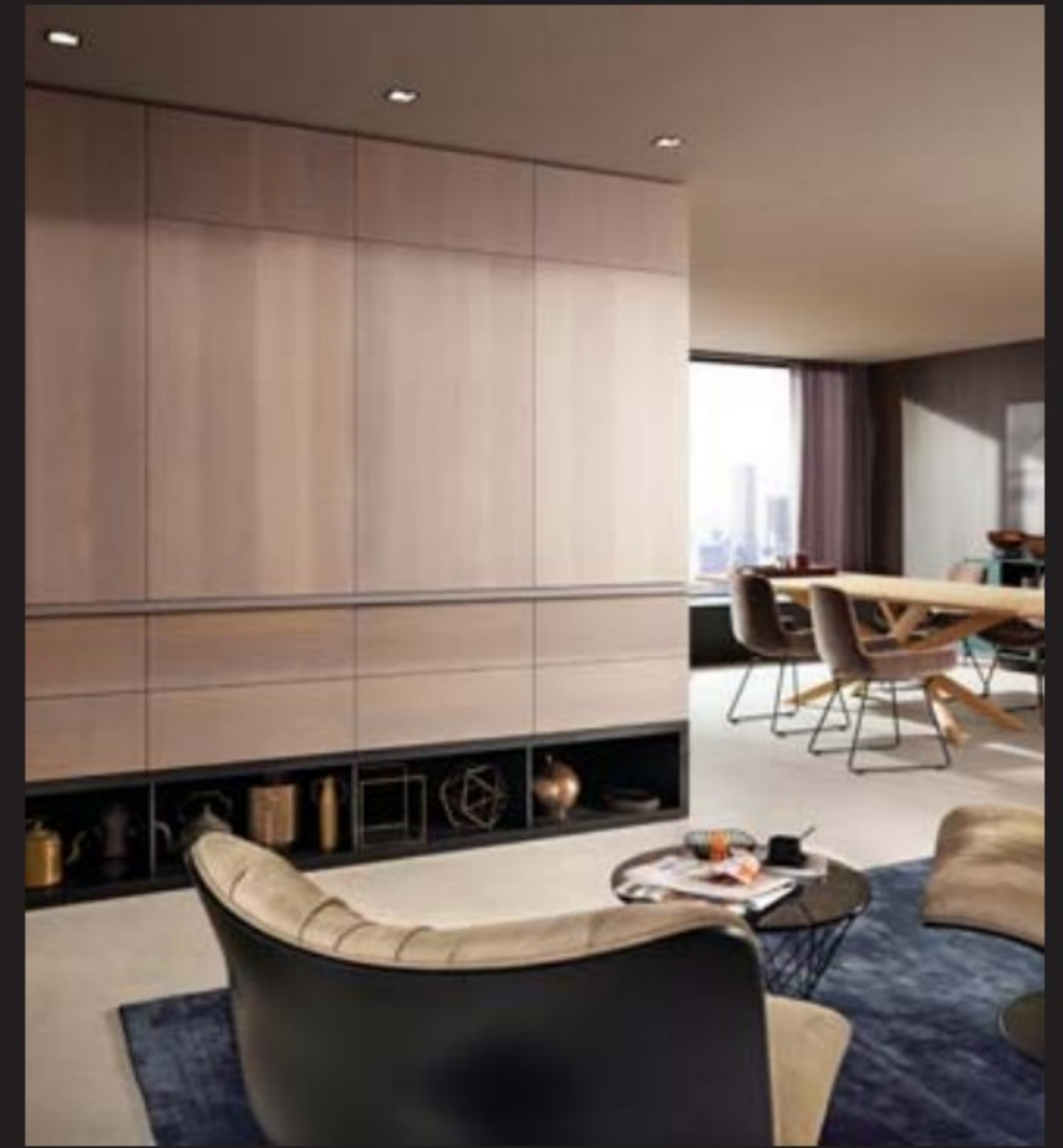
HEADQUARTERS:
Active Interest Media 2143 Grand Ave. Des Moines, IA 50312
Editorial E-mail: editorial@woodshopnews.com
Advertising E-mail: sales@woodshopnews.com
Website: www.woodshopnews.com
Advertising Billing Questions: (661) 965-9925

SUBSCRIPTION SERVICES:
For questions, problems, or changes to your Woodshop News subscription,
Online: www.woodshopnews.com/customerservice
Call: 800-243-9177
EMAIL: subscriptions@aimmedia.com
write: Woodshop News, PO Box 433212, Palm Coast, FL 32143-3212
Canada Post Return Address undeliverable to:
APC-PLI, P.O. Box 503, RPO West Beaver Creek,
Richmond Hill, ON L4B 4R6.
Canada Post Publication Mail Agreement No 40624074.

REVEGO

Unlock New Possibilities with REVEGO

REVEGO pocket doors reveal beverage stations, coffee corners, or prep zones—keeping counters clear and spaces seamless. Effortless to plan, and simple to install.



Learn more about REVEGO at blum.com

blum



Michigan woodworking school raises \$16.5M for campus expansion

By Jennifer Hicks

WOODSHOPNEWS
FEBRUARY 2026

The **Sam Beauford Woodworking Institute (SBWI)** in Adrian, Mich., has raised more than \$16.5 million for the first phase of its campus expansion project. School officials plan to break ground this year on a new 31.3-acre site.

The funding includes \$12 million from the state of Michigan and \$4 million from the S.L. Hickman Family Foundation, along with contributions from local supporters.



Architectural renderings of the new building.

"After more than a decade of shaping woodworkers from around the world, we are deepening our roots in Lenawee County with the purchase of 31.3 acres from Gleaner Life Insurance Society," said SBWI President Luke Barnett. The property, at the northwest corner of Forrister and Hamilton roads, sits near the school's current location.

Barnett credited state Rep. Nancy Jenkins-Arno for helping secure the state funding. "Her belief in the value of hands-on education has given this vision a foundation to stand on," he said.

The new campus will feature workshops, student housing, design studios and public exhibition spaces built with mass timber construction. Plans call for breaking ground in 2026 and opening in fall 2027.

According to Barnett, the school aims to expand from



20 graduates annually to more than 200 to meet what he described as Michigan's growing demand for skilled woodworkers, furniture makers, timber framers and preservation carpenters.

SBWI launched a fundraising campaign in December seeking public donations. The school needs an additional \$1.5 million to complete the campus project and \$2 million for an endowment, Barnett said.

Learn more at sbwi.edu. **W**



Are You Feeling **OVERWHELMED** by All the Different Dust Collection Systems and Setups?

Dust collection may be a science but that doesn't mean you have to be an expert to have a dust-free shop. No matter how big or small your shop is, our team of systems experts is here for YOU!



Not sure where to start?

Contact us today for your **FREE** dust collector consultation. We'll walk you through the process of selecting a collector that works for you, reviewing everything from the port sizes on your tools, the layout of your shop, electrical requirements and more. **Talk to our systems experts today.**

**Free
Consultation**

Kitchen trends favor technology

By Jennifer Hicks



The National Kitchen & Bath Association has released its 2026 Kitchen Trends Report, based on a survey of 634 industry professionals including

designers, manufacturers, remodelers, and architects.

The report predicts kitchens will become more intelligent, personalized and health-conscious over the next three years. Homeowners will replace dining tables with custom storage, choose minimalist designs over intricate details, and add smart technology upgrades, according to the association.

"The integration between the kitchen and whole home is a really exciting opportunity for the kitchen and bath industry," Bill Darcy, global president and CEO of NKBA/KBIS, said in a statement.

"The 2026 Trends Report further confirms this evolution, as homeowners desire connection and cohesive design between spaces for entertainment, functionality and wellness. This report helps provide an inside look at what the market demands so that designers can be empowered to offer cli-

ents beautiful spaces tailored to their individual needs."

The report found most kitchen trends are in the growth phase, including smart technology integration, open layouts, hybrid products, generational customizations, and wellness-focused spaces. While U.S. homes are shrinking overall, 76 percent of respondents expect kitchen footprints to increase over the next three years.

Neutral colors and natural materials will dominate, with 60 percent of respondents identifying minimalism as a popular design style for the next three years. Growing features include flat, slab cabinet door styles (69 percent), panel-faced refrigeration (72 percent) and dishwashers (85 percent), and slab or solid surface backsplashes (75 percent).

All respondents agreed lifestyle enhancements will be popular kitchen layout features in the next three years. Top features include dedicated beverage areas (85 percent), pet feeding stations (64 percent), and eat-in kitchens (59 percent).

Smart technology is gaining traction across kitchen categories, including Wi-Fi-enabled, mobile app-controlled appliances and lighting, and embedded wireless charging.

The NKBA represents nearly 55,000 North American kitchen and bath industry professionals. The online survey included respondents who are NKBA community members working as designers, showroom staff, dealers, specialists, manufacturers, kitchen and bath remodelers or contractors, and architects.

The full report is available at nkba.org. **W**

Builder confidence edges up

By Jennifer Hicks



The National Association of Home Builders/Wells Fargo Housing Market Index released in December shows builder confidence rose slightly at year-end but remained negative amid rising construction costs, tariff un-

certainty and affordability concerns.

Builder confidence in the market for newly built single-family homes rose one point to 39 in December, according to the report. Overall sentiment levels stayed below the breakeven point of 50 every month this year and hovered in the high 30s during the fourth quarter.

"Market conditions remain challenging with two-thirds of builders reporting they are offering incentives to move buyers off the fence," NAHB Chairman Buddy Hughes said in a statement. "Meanwhile, builders are contending with rising material and labor prices, as tariffs are having serious repercussions on construction costs." Hughes is a home

builder and developer from Lexington, N.C.

NAHB Chief Economist Robert Dietz said builders see improvements ahead, though current cost increases make timing uncertain.

"In positive signs for the market, builders report that future sales expectations have been above the key breakeven level of 50 for the past three months and the recent easing of monetary policy should help builder loan conditions at the start of 2026," Dietz said. "However, builders continue to face supply-side headwinds, as regulatory costs and material prices remain stubbornly high. Rising inventory also has increased competition for newly built homes."

The survey found 40 percent of builders cut prices in December, marking the second consecutive month at 40 percent or higher since May 2020. Sales incentives reached 67 percent in December, the highest level in the post-COVID period.

The NAHB/Wells Fargo HMI is based on monthly surveys that gauge builder perceptions of current single-family home sales and sales expectations for the next six months as good, fair or poor. The survey also asks builders to rate buyer traffic as high to very high, average, or low to very low. Scores for each component calculate a seasonally adjusted index where any number above 50 indicates more builders view conditions as good than poor.

Learn more at nahb.org/hmi. **W**

SLEEK. SLIM. SUBTLE.

HÄFELE



Thinking differently creates space. **Häfele's Free Slim** does just that - offering maximum flexibility, efficiency and convenience in a minimal space. At 8 mm (5/16"), it is the thinnest of its' kind in the market, engineered to be either surface-mounted or recessed into a side panel for a nearly invisible finish.

Häfele's revolutionary and patented U-Spring technology used in Free Slim replaces traditional springs commonly seen in lift up fittings, resulting in smooth, continuous door movement wherever installed. The final look? A clean, minimalist aesthetic that doesn't compromise functionality or style.

- > Ultra-thin 8 mm (5/16") profile
- > Revolutionary U-Spring technology
- > Seamlessly integrates into a 16 mm (5/8") side panel
- > Three finishes: grey, white and anthracite

IF YOU HAVE QUESTIONS, WE CAN HELP.
Online & Live Chat: www.hafele.com
Phone: 800-423-3531 | Email: experts@hafele.us

Maximizing
the value of space.
Together.

Black walnut sales stay steady

By Jennifer Hicks

Black walnut (*Juglans nigra*) hardwood sales have remained steady as 2026 begins, with consistent orders and quality logs available, according to suppliers interviewed by Woodshop News. Customers are primarily seeking FAS (First and Seconds) and premium grades.

Rick Hearne of Hearne Hardwoods in Oxford, Pa., regularly sells premium unsteamed walnut and says it remains a steady seller despite tariff discussions that can influence buyers.

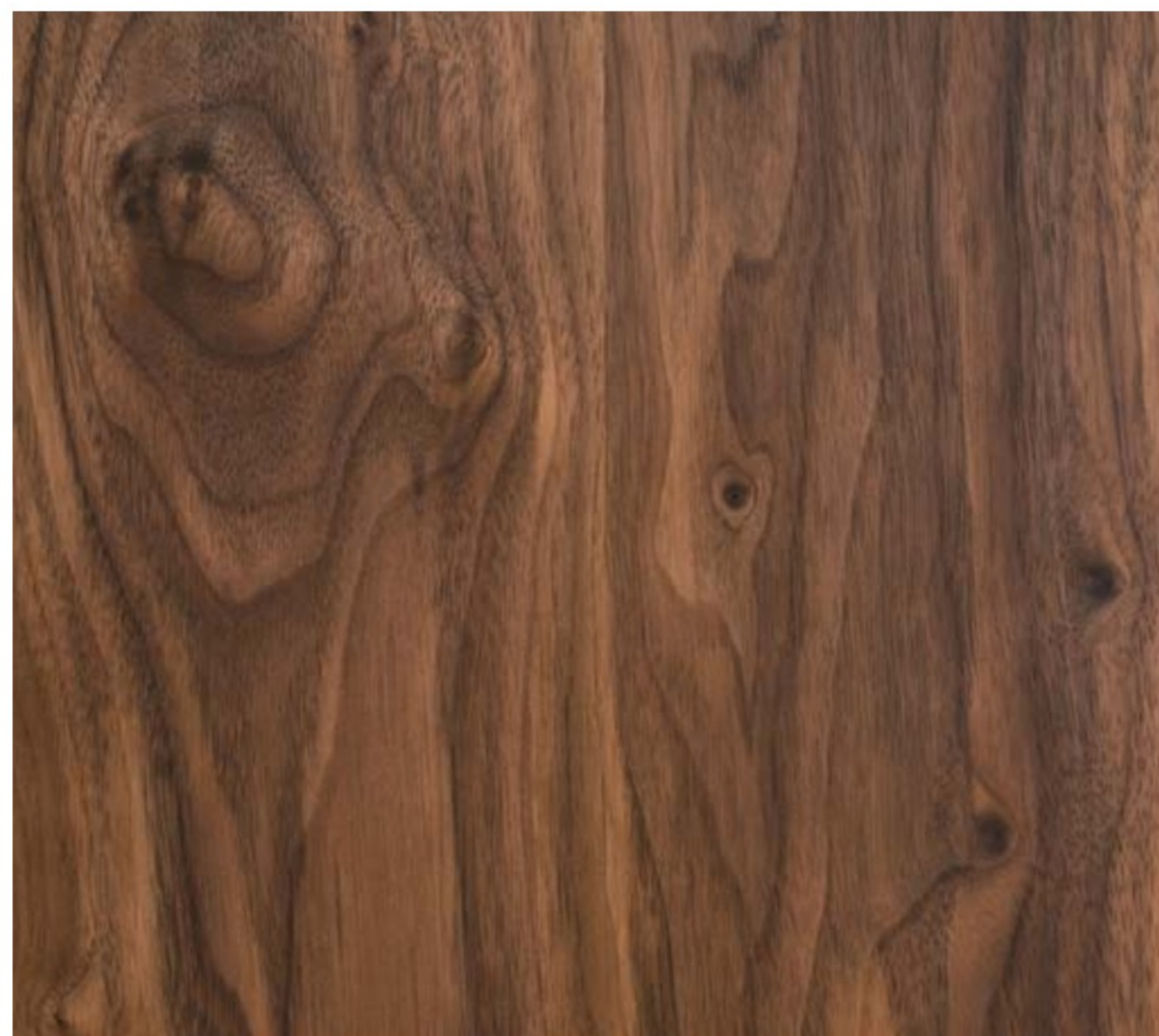
"The price has been holding fairly steady. The year started off with a better supply of logs because when Trump hit China with tariffs, they immediately stopped buying logs, and they were buying a tremendous amount of walnut logs from the Midwest, so the competition for the logs went down, but it didn't last long. The tariffs being on and off again affects that and puts pressure on the quality of the material, but the price has been holding steady during that whole period," Hearne says.

"We are very well inventoried on it. We really don't pay much attention to commodity pricing. If it's a super log, we want to buy it. So, we've had walnut stocked from 4/4 through 16/4 and boards up to 8 feet wide and 18 feet long."

Hearne says he offers only unsteamed walnut in boards and slabs due to customer preference. Projects range from furniture and niche products to high-end architectural millwork. He adds that walnut demand matches white oak, with both being the strongest sellers.

Paul Kroffon of Kroffon Hardwoods and Cabinets in Tiffin, Iowa, has seen increased demand for walnut in recent months, mostly for tables and smaller craft projects.

"There seems to be a little bit of an uptick on it. We produce a lot of the 8/4 and 10/4 walnut and we've seen more activity on that. The 4/4, it goes in spells, but it seems there's a little more increased activity on that," Kroffon says.



"It's usually a pretty steady item but sometimes you see a little increased activity and we're seeing that. I don't know if it was down, but it's not the top seller we have. It seems like the white oak right now, everyone wants the quartersawn white oak."

Carl Mahlstedt of Goosebay Sawmill and Lumber in Chichester, N.H., offers steamed standard dimensional walnut lumber and says demand remains high because of walnut's unique color.

"It's been very popular. We can't seem to keep enough in stock. It's been very steady; there could be a slight increase this year, but I think the overall view on it is that it's still strong and it's just still very popular. If anything, from at least what I see, the standard FAS grade is looking a little better than it used to. We try to stick with the premium grades because our customers would rather pay a little bit more to guarantee the nicer color and wider widths," Mahlstedt says.

He also offers unsteamed live-edge slabs cut and dried on the premises. Among live-edge slabs offered, walnut is one of the more popular choices because of its color variation.

FAS walnut in 4/4 thickness was quoted at \$10 to \$13.25 per board foot. **W**

Adobe Stock

12 FEBRUARY 2026 WOODSHOPNEWS

Moisture Meters

Pinless, Pin and Hygrometers

Choose Lignomat for Reliability, Accuracy and Competitive Prices.

Questions about which meter to buy, call and talk to our experts.

800-227-2105
www.Lignomat.com



Pin or Pinless - Your Choice

Pin meters are more versatile. They measure all thicknesses of wood, a wide moisture range from dry to wet and all shapes from flat boards to round shapes.

Pinless meters are very convenient. A lot of boards can be measured in a short time leaving no pin holes, but pinless meters require a flat measuring surface.



EXCELLENT ACCURACY & RELIABILITY

*Quality machines with
proven performance.*



grizzly.com/shopfox

**TWO-
YEAR
WARRANTY**



Available at these fine retailers:

grizzly.com

JB TOOLS


ACME TOOLS

THE TOOL NUT

& MORE!
See website for details



Rev-A-Shelf's Girasolo
Blind Corner Optimizer.

Going beyond basic cabinets

New hardware and storage systems that address common pain points while improving accessibility

By Ralph Bagnall

Only about a hundred years ago, the height of kitchen design was the Hoosier Step Saver, a freestanding baking cabinet containing everything a cook needed in the kitchen of their day. We have come a long way since then with plywood and melamine products allowing for the built-in cabinets we know today, and the innovation just keeps continuing as you will see below.

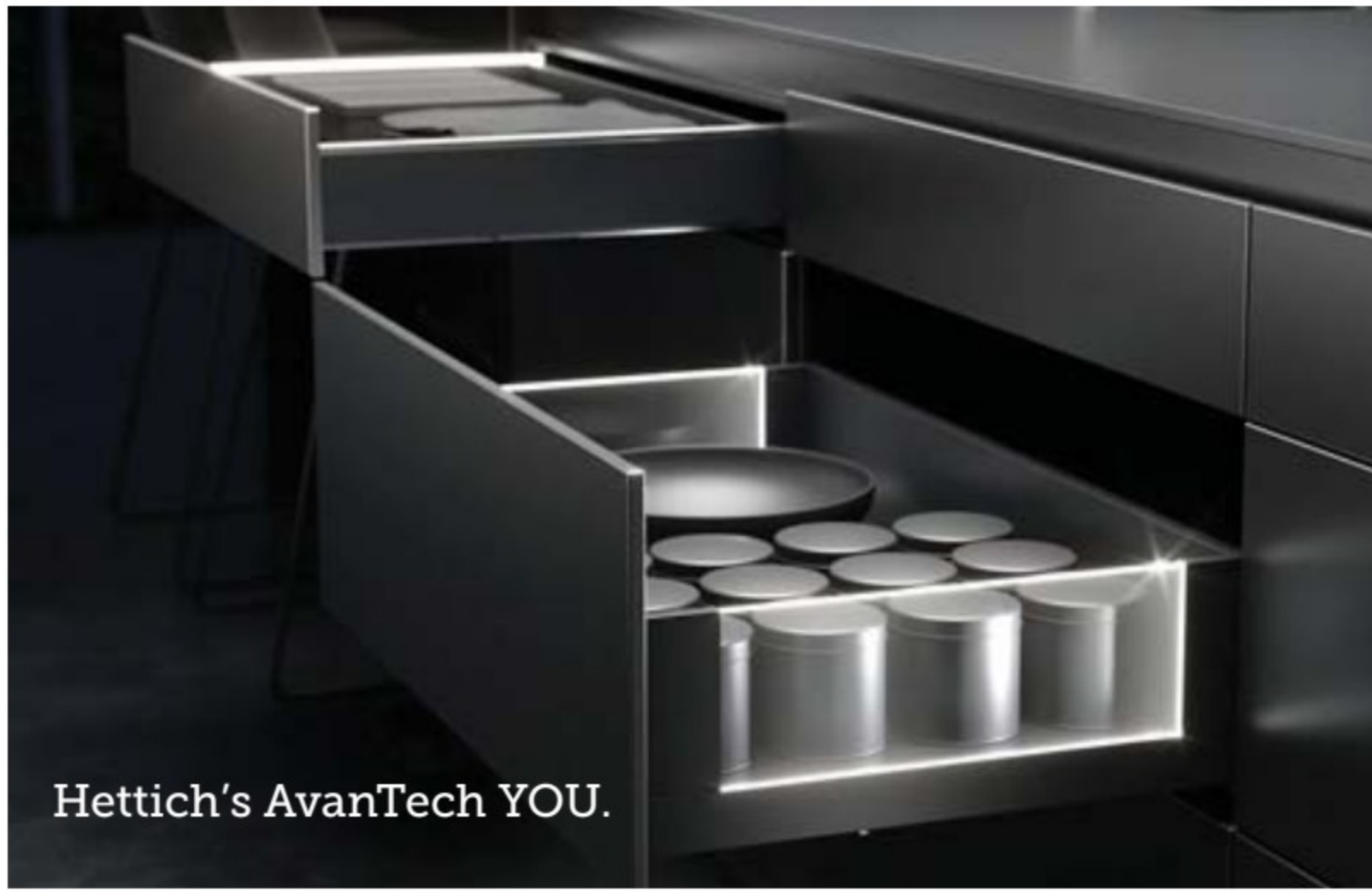
The kitchen is a workspace and as such requires good lighting. Overhead and undercabinet LED lights combine to brighten work areas efficiently. A new concept illuminates drawer and cabinet interiors with edge-lit drawer sides of glass or acrylic. The **AvanTech YOU drawer system** from Hettich provides a soft glow along the edges of pullouts, highlighting how these light systems make it easy to find ingredients anywhere in the kitchen from breakfast time to midnight snacking. For solid side drawers they offer a frosted LED trim strip that glows to provide light. Everything is built around a rechargeable battery power system allowing for maximum flexibility even in remodels.

Cabinet doors are for when you do not want to see what is inside, but design is not limited to simple side opening hinged doors. Drop doors that double as a work surface and garage style lifts that raise doors out of the work area allow for entirely new workspace designs.

The **Exedra Gravity pocket door system** from Salice makes the doors disappear completely into the cabinets themselves. These are not manual pocket door slides, but an assisted sliding system with dampeners to ensure soft operation. The system is available in a "Push" style that opens at a touch and a "Pull" option that when released pulls the door out of the cabinet. With a weight capacity of up to 88 lbs., these doors can close over cabinets and counters for a completely flat kitchen design that hides everything.

Physically reaching up into wall cabinets and down into bases no longer has to be the chore it once was. Adaptive designs that make life easier for folks with mobility or reach issues make these spaces work better for everyone, and more options are available than ever.

Appliance lifts that raise heavy mixers and such to



Hettich's AvanTech YOU.

double wall construction serving up a clean design. Grass offers Nova Pro Scala in four heights, nine lengths, and three finishes: Silver, Ice, and Stone. You can even shop-build covers for the drawer sides for a completely custom design. And Grass America also has a solution for keeping their large drawers organized. The **Tivanea Optima** system is made up of aluminum profiles that can be assembled to create discrete areas within a drawer providing everything with its own space. Organizers like this make it easier to

working height have been around for a while featuring counterbalances and soft close. Individual pull-out drawers and full cabinet units like the Häfele **SmartCab Base Pull Outs** make it easy to find and reach everything stored under the counters. These can be fitted for different storage needs and even offer an optional custom-fit cutting board. They attach to the floor of a cabinet with just four screws, making them easy to install in new construction or existing cabinets.

Large drawers are convenient for storing pots and pans without needing to kneel on the floor to find them. Metal sided drawer boxes make it fast and easy for cabinet shops to make and install large drawers.

Grass America's **Nova Pro Scala drawers** feature a



The iMove from Häfele.

We give you more options than anyone in the industry!

Custom Drawers To Fit All Your Unique Needs

CCF is known for customization. If you can draw it, we can build it! We have a highly skilled customs department that is waiting for your unique projects



Scan the QR Code for more information on our custom drawers.



ccfdrawers.com

use a kitchen and put things away afterwards.

Corner base cabinets present special issues for storage. A special corner cabinet can be installed with fixed or lazy susan shelves or uses a deep cabinet with the door on one end only. Space is lost and items can be hard to reach way back under the counter.

Rev-A-Shelf's **Girasolo Blind Corner Optimizer** uses soft close pivoting trays that turn the corner and reach out through the cabinet opening to combine storage space with easy access. There are 12 options available for left and right swing with wood or metal trim to expand the usable cabinet space with elegance. The finger-jointed maple shelf rims are just one feature that shows off the quality of the units. They maximize space utilization while eliminating the need to reach within inaccessible areas.

Kitchen designs often end up with narrow spaces between cabinets or next to appliances that are typically covered with trim or pilasters, but this can be usable space. Rev-A-Shelf's **Sidekick** attaches to the side of a larger "hero" pullout to increase the space and function of a cabinet. It uses a wider front that can be made to cover an extra space hiding or eliminating narrow spaces inside a run of cabinets. The Sidekick adds 3" to the width of the Rev-A-Shelf 448 pullouts. Tall narrow units can be useful for storing cookie sheets and there are even some companies making fold-out step stools that can be inserted between cabinets where needed.

Soft closing hardware is well established within our industry, and soft opening is not all that new either. But now Grass America has introduced its **Sensomatic** electronic opening system. Drawers in a case are literally opened with a touch. Electronically controlled ac-



Hafèle's SmartCab Pullout.

tuators on the back wall of the cabinet extend to begin opening individual drawers as they are touched. The self-contained low voltage system can be configured for single or multiple drawers and connected together across a run of cabinets, easing installation. The system allows easy drawer access to everyone even if they have limited strength in hand or arm. This sort of system would be very useful indeed inside a bedside table.

On a strictly practical level, sink base cabinets will al-



Salice's Exedra Gravity pocket door system.

most certainly get wet any number of times during their lifespan. Even if there is never a leak or broken pipe, cleaning out traps, installing new faucets and even refilling soap dispensers can make a mess.

There are many liners and mats for protecting sink cabinet decks, but Doug Mockett Co. offers a new **aluminum liner**, custom sized, to fit the cabinet. The embossed tray features a rubber flange on three sides that rests along the cabinet sides and back to trap and hold spills. A plastic lip on the front protects the door in front and floor below. It is ordered to size and will help keep the sink cabinet from being damaged by typical drips and spills.

Tall pantry cabinets are very useful,



Sidekick from Rev-A-Shelf.

but only if they are fairly shallow and wide. Otherwise, things tend to end up hidden behind others and hard to find. Hettich has introduced its **Iseo tall unit storage system** to solve these problems. It maximizes space with storage racks mounted on the inside of the door, and their Silent System pullout racks within the actual cabinet. Everything in the pantry stays neat and easy to find. No more hunting around in the dark depths of the pantry.

The revolution in cabinet hardware has not passed wall cabinets by either. There are many options for adding accessibility to the upper spaces. One of the most challenging to reach is the cabinet above a refrigerator. Hard-



Tivanea Optimu from Grass.



Trusted Dovetail Solutions



650A Dovetailer



750CN-C Dovetailer



SCM1200 Clamp



ICM300 Gluer

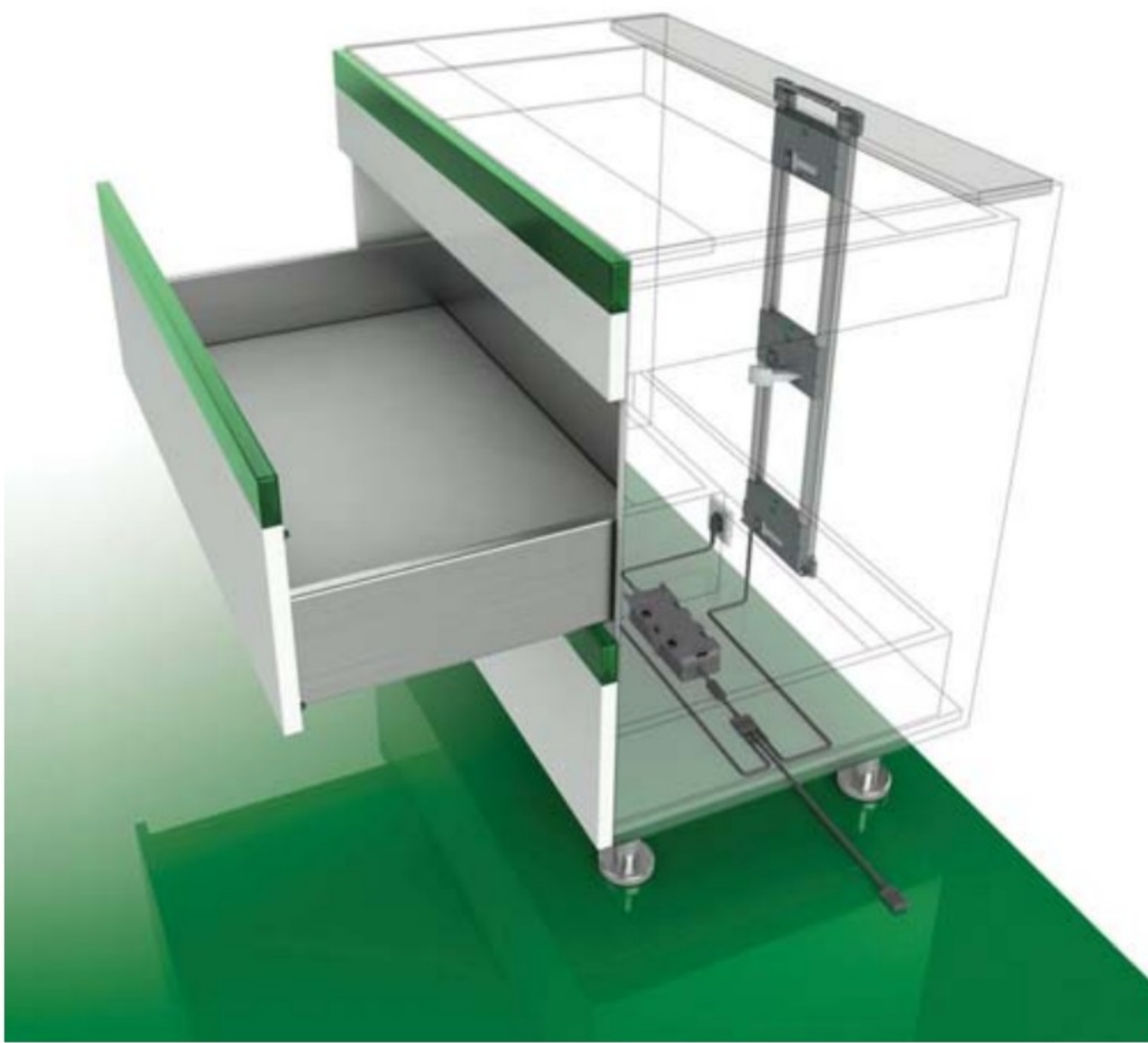


OmeC, a global leader since 1964, proudly manufactures and distributes dovetail machines for the woodworking industry, all produced in Italy. Our extensive range encompasses dovetailers, gluers, hot brand stamping, and clamps. Crafted to meet the diverse needs of woodworking shops of any size, from high-end artisanal craftsmen to high-production facilities, OmeC dovetail machines are renowned for their precision and reliability. Whether you operate on a kitchen-a-month scale or are a component manufacturer, OmeC's automatic dovetailers stand out for delivering the highest quality machines.

EXCLUSIVE U.S. IMPORTER

MACOSER INC

www.macoser.com - 704-392-0110



A diagram of Grass Sensomatic.



The Iseo Tall Pullout from Hettich.



Richelieu's BaseLift 6600.



Richelieu's Verti 840.



Universal Overhead Swingout from Hardware Resources.

Hardware Resources has unveiled its **Universal Overhead Swingout** to help everyone utilize this space better. It can be mounted left-handed, right-handed or even both in the same cabinet if it is more than 30" wide. It features easy installation with the door mounted to the Swingout. Just set the unit in place and screw it in. The Universal Swingout can support up to 30 pounds making it as useful as possible.

Shelving inserts that are counterbalanced to arc down over the counter space have been around for some years now. They can safely lower the contents of wall cabinets to a more easily reached height. Hafele's **iMove single and double trays** make it easy to bring items within reach from cabinets that might otherwise be hard to access for children or wheelchair users.

Richelieu has taken this concept a leap forward with an electric lift system that lowers the entire contents of a cabinet down to countertop level. The company's **Verti 840 System** lowers cabinet shelves and can carry up to 132 lbs. (59 Kg) as it lowers or raises with the touch of a button. A built-in safety switch stops the action if any objects are encountered, and the system is nearly undetectable when stored away.

Taking this concept to the final level, imagine a counter, even with sink and/or cooktop, that can be raised or lowered on command to accommodate whoever is using it at the time. Richelieu's **Electric Worktop Base Lift 6600** does exactly that. The counter does not have a base cabinet under but comes in lengths up to 94" wide and with a height range from 27-1/2 (700mm) to 38-3/8" (975mm). Sinks and electric cooktops can be fitted and overlapping panels conceal plumbing and electrical fittings for a clean, sophisticated look. This is a level of accessibility and flexibility that allows nearly anyone to share the kitchen space without compromise.

This article started out being a simple review of the new and interesting cabinet products and accessories on the market. But as I worked on it, I noticed a trend; a great many of the new products being introduced across the industry are about accessibility. These items may or may not have been developed specifically for people with different physical needs, but they tend to work better for all of us. Which is just a nice way for our industry to be heading. **W**

Courtesy of manufacturers

CONQUER SANDING PROBLEM SURFACES WITH KLINGSPOR!



When sanding problem surfaces, several issues can arise when sanding various types of materials.

We're quite possibly stating the obvious that:

- Loading or clogging of the abrasives - soft or "gummy" materials can fill in the space between the abrasive grains and render them unable to abrade the material.
- Tearing of the abrasive's backing - It is important to match the backing to the demands of the application.
- The abrasives are wearing out too fast - An abrasive must be sufficiently harder than the material it is intended to abrade. Hardness is an abrasive's resistance to being scratched or worn away.
- Chatter marks when belt sanding - It is very important to match the abrasive belt's joint type with the application requirements.

To match the proper abrasive, backing, and belt joint with your application, send your question to our product support department at productsupport@klingspor.com or call (828) 326-0273.



"Call today to speak with one of our technical advisors about your sanding project."

– Nick, Technical Advisor



KLINGSPOR
The Most Sanding Power for Your Money Since 1893!

800-645-5555 • www.klingspor.com



When saving money costs you more

From substitute materials to discount suppliers, common cost-cutting measures can backfire for finishing shops

By Diane Shattuck

When trying to save money and improve cash flow, shops sometimes overlook true costs — thinking that paying less for materials or cutting corners is the answer.

Hoping to win the lowest bid, we cut material costs and compress timelines. But consider this: Customers have a vision. Your job is to discover what they want and need, then use your expertise to deliver that vision. If customers have seen your work and chosen you to bid, why base your proposal on someone else's pricing? What products will competitors use? What are their quality standards, overhead and deadlines? Are there penalties for missing deadlines? Even if all factors were equal — which they never are — bids should differ. Only you know your worth and how long the job will take.

The truth about saving money isn't always in the dollars squeezed from materials and tools. Time spent on jobs can cost more if you overlook the basics. Labor costs, not materials, represent the largest expense. In many cases your suppliers can help prevent costly rework from insufficient products or lack of knowledge. Good suppliers can become valuable resources in helping you save time and money. Many have specialists on staff — use them.

COMMON COST MISTAKES

Using substitute substrates: The customer loves the cherry wood sample from your presentation. But cherry's cost exceeds their budget, so you suggest maple with similar grain that can be finished to look like cherry. The extra steps needed to achieve that look cost more than using cherry. Where's the savings?

Switching coating systems: Your shop uses post-catalyzed coating at

\$105 per gallon, applying two coats as a self-sealing system without issues. To trim costs, you switch to pre-catalyzed coating at \$73 per gallon. But did you save money?

The post-catalyzed coating has 39 percent solids. Applying two coats at 5 wet mils each yields 3.9 mils dry film build. With HVLP spray systems, you get approximately 438 square feet per gallon at one dry mil. Cost: 48 cents per square foot for two coats.

The pre-catalyzed system has 25 percent solids. The same application yields 2.5 mils dry film build and 281 square feet per gallon. Cost: 52 cents per square foot for two coats.

Despite the lower gallon price, the pre-catalyzed system costs more per square foot while providing less durability and coverage.

Rushing cure times: Accelerating coatings produces the same result as baking a cake too quickly — golden outside, gooey inside. Stains and glazes need proper dry time before applying finish coats. Their solvents must evaporate to ensure adhesion. Applied too soon, solvents migrate into the coating, causing resins to separate and creating a blush similar to humidity damage.

If you deliver goods immediately after finishing, you may never see reactions that occur weeks, months or even years later. These problems exist throughout the finishing industry — and addressing them after delivery is rarely pleasant.

Don't rush. Allow proper dry times to avoid redoing finishes. Cold temperatures double dry times for every 11-12 degrees below 78 F.

Chasing cheaper suppliers: A common mistake shops make is buying from struggling suppliers offering rock-bottom prices. The thinking goes: "I'll save money because they're

selling the same product cheaper."

Stop and consider why they're selling below market. How much inventory do they carry? Will products be in stock when you need them?

Struggling suppliers often discount to generate cash flow. They may lack adequate inventory, forcing you to either pay higher prices elsewhere to stay on schedule or lose money waiting for restocks. Suppliers constantly running out of materials may have cash flow problems that prevent them from maintaining inventory.

Lower prices require trade-offs. What are you sacrificing? Fewer delivery days? Reduced staff, leading to picking errors and returns? Technical expertise? Inventory depth? Flexible return policies? Credit terms?

Price is just one factor. Choose suppliers that best serve your needs efficiently.

Consider this analogy: You need a vehicle for deliveries. Based solely on price, you'd buy a Smart car. It's cheaper to buy, maintain, and fuel. It's easier to maneuver and doesn't require weight station stops. But you'd need multiple trips to deliver everything. Despite the fuel savings, a box truck remains the better choice for delivery needs.

The same logic applies to suppliers. The lowest price rarely delivers the best value when you factor in reliability, service, and hidden costs.

Know your true costs. Save money by saving time. Finishing is a process — shortcuts often lead back to square one. **W**

Diane Shattuck is a finisher, consultant, guest speaker, writer and teacher. She can be contacted at dianeshattuck@msn.com. Questions, suggestions and comments are always welcome.

MAINE SCHOOL OPENS COURSE REGISTRATION

Registration has opened for 2026 Workshops at the Center for Furniture Craftsmanship in Rockport, Maine.

“Running June through October, the workshop season brings a wide assortment of one-, two-, and three-week classes in furniture making, woodturning, finishing, carving, and more,” the school explained.

“New classes include Bend and Cooper with Aaron Fedarko and Chelsea Witt, Authentic Casework with Tim Coleman and Frank Strazza, Tambour Doors with Reuben Foat, and The Hand-Sculpted Chair with Japanese Hand Tools with Yuri Kobayashi and Takahiro Yashino.

“Some of the courses making a return are The Unplugged Woodshop with John Cameron and Clark Kellogg, Next Steps in Furniture Making with Erik Curtis and Mike Korsak, and Just Joinery with Rob Chamberlin. Our perennial favorite foundational class, Basic Woodworking, will be offered five times throughout the season.”

For a complete course list, visit wood-school.org.

GAIN VALUABLE TRADE INSIGHTS AT THE WORLD OF WOOD CONVENTION

The International Wood Products Association’s (IWPA) 70th annual World of Wood Convention is scheduled for March 17-19 in Colorado Springs, Colo.

“2026 may be a year of uncertainty, but there is one thing to know for sure – you can’t miss the 2026 World of Wood. It’s the perfect opportunity to connect, conduct business, and learn all in one place,” the IWPA said in a statement.

“With an agenda full of essential sessions on trade and regulatory policy, you’ll walk away with fresh perspectives and the latest information on trade. But that’s not all! There will be plenty of time for networking with colleagues, sharing business challenges, and forging new relationships that can help you grow, all nestled in the beautiful mountains of Colorado. Don’t miss the chance to engage with industry leaders and IWPA staff at our biggest event of the year. If you have yet to register, do so before early bird registration rates expire on December 29th and be part of the conversation that will shape the future of the wood products industry.”

Register at iwpawood.org.

NORTHPOINT EARNS KCMA CERTIFICATION FOR ASSEMBLED CABINETS

NorthPoint Cabinetry, a manufacturer of cabinets from Hardware Resources, has announced its line of assembled cabinets has earned certification from the Kitchen Cabinet Manufacturers Association (KCMA).

Certification requires cabinets to meet ANSI/KCMA A161.1 performance and construction standards recognized across the industry.

“KCMA certification is more than just a

symbol – it’s an independent confirmation that our assembled cabinetry meets the highest standards of craftsmanship and reliability,” said Jami Harmon, Senior Director of Product Management for NorthPoint Cabinetry at Hardware Resources. “This achievement reinforces our commitment to offering dependable, builder-friendly cabinetry that delivers exceptional value to our customers.”

Learn more at nortpointcabinetry.com.



The Logical, Reliable, & Affordable Solution!









TOP SPECS, TOP VALUE.





USA: +1.626.968.6330
West: 637 Vineland Ave, La Puente, CA 91746
East: 331 Jim Cline Rd, Lawndale, NC 28090



Canada: +1.579.420.1794
803 Rte 202 Ouest, Bedford, QC, Canada J0J 1A0

Email: info@castalymachine.com

Website: www.castalymachine.com



Felder adds PCS to 700 sliding table saw series

By Jennifer Hicks

Felder Group USA is now offering the K 700 PCS series sliding table saws in the U.S., featuring the company's Preventative Contact System (PCS) that drops the blade below the table when it detects human contact.

The company developed the three-saw lineup to bring its safety technology to machines with a lower price point and smaller footprint than existing PCS models, while adding a single-phase power option.

"The 700 sliding table saw series has been around for a long time, but since we launched the PCS, we've been having more and more requests from people to get it into a more economically priced machine," says Ruan du Toit, CEO at Felder Group USA.

"The K 700 PCS series brings that safety technology into a smaller footprint, and also, the availability of it in single-phase. Up until now, where we've had the safety



The Felder K 700 S PCS.

system, it's only been on three-phase machines for more industrial shops. So now that it's available in single-phase, it opens that door a little more to smaller shops, in some cases to schools, and things like that."

The three models — K 700 PCS, K 700 Professional PCS and K 700 S PCS — differ in sliding table lengths. The K 700 PCS has a cutting length of 51-1/8" to 98-3/8", the K 700 Professional PCS cuts 80-3/4" to 98-3/8", and the K 700 S PCS cuts 98-3/8" to 145". Each machine features an X-roll sliding table with a 10-year guarantee, according to the company, and comes in single- or three-phase configurations.

The PCS technology, launched in 2019, was previously available only on Felder's Format 4 line and Felder 900 series machines. The system uses sensors to detect unexpected, fast approaches within the saw blade area and triggers the safety mechanism.

"The main thing about it is it's a non-touching system, so you don't actually touch the blade to activate the system, and there's no damage to the machine or the blade," du Toit says. "It simply drops the blade below the table's surface with an incredible amount of speed, and you can reset the system within 30 seconds."

All three models will debut in the U.S. at the International Woodworking Fair in August.

Learn more at felder-group.com. **W**

Courtesy of Felder

FEBRUARY 2026

22

WOODSHOPNEWS

VISTA FINISHING™
CUSTOM WITHIN REACH

CUSTOM RANGE HOODS

16 Wood Species
Easy Installation
Made to Order

MADE IN USA

5727 Dodge Rd, Rome, OH 44085 | (216) 243-8660

New Festool abrasives target intricate surface work

By Jennifer Hicks

Festool recently introduced PROfile, a new addition to its Granat soft foam abrasives line designed for surface preparation and complex shapes.

The company says Granat PROfile offers precision and durability for detailed work, targeting finishers, woodworkers and painters who need control, flexibility and consistent surface quality.



"Festool has long championed premium abrasives that match the performance of our line of sanders," Rick Bush, senior product marketing manager, said in a statement. "After all, the sandpaper is what touches the surface, so it must be right. And now we have a solution engineered to tackle intricate detail-based sanding such as moldings, carvings, crevices, and other odd shapes."

Designed for use with sanding power tools, the abrasives feature a half-inch layer of soft foam backing that conforms to contours, edges, curves and profiles. They work on moldings, spindles, raised panels, decorative details and other intricate projects on surfaces



ranging from clear coats to unfinished material.

Products come in three grit levels (medium, fine and superfine) and five pad shapes: 5" and 6" round, 3" x 4" and 3" x 5" rectangle, and 4" x 6" delta. Mixed-grit packs are available for each size. Learn more at festoolusa.com. **W**



KCD Software

ASK ABOUT
VERSION
25

The design to manufacture software solution for cabinet and closet professionals.

Whether you're a small traditional cabinetmaker, a boutique closet designer, or a CNC manufacturing powerhouse, we have the design to manufacture software solution made just for you. Discover a new level of efficiency with KCD Software. Ask about our new Version 25.

Let's discuss the ideal solution for you.

Call 508-760-1140 or Visit KCDSoftware.com

DESIGNER PROFESSIONAL WORKSHOP CNC COMMANDER



Flex Spray Connect offers scalable solution

By Jennifer Hicks

Guffey Systems, a manufacturer of vertical finishing systems for the cabinetry, furniture and millwork industries, has launched Flex Spray Connect for its Flex Spray product line. The portable, scalable solution expands spray and storage capacity without permanent installation.

Nathan Guffey, president and founder of Guffey Systems, said the new product builds on the company's Flex Spray Station, a recirculating spray booth introduced earlier this year.

"We launched the Flex Spray Station at the beginning of this year, which gives you flexibility and mobility in your spray booth. The Flex Spray Connect also gives finishers a mobile option," Guffey said.

The system uses the company's patented mobile rails and new mobile rail connectors to create a modular spray area that can be repositioned throughout a spray booth. Standard mobile rails provide up to 20 feet of additional spray area with a 6-foot connector, 18 feet with a 4-foot connector, or 16 feet with a 2-foot connector.

"The standard rails can give you up to 20 feet of addi-



tional space to be able to run another 30 parts. Say you're running a two-color kitchen, which is very popular — you could actually be running one in your regular spray booth, and then you can set this up to run your second color, so that you're not having to wait on getting those two colors finished," Guffey said.

Customers who already own mobile rails through the company's PivotLine system can purchase just the connectors.

The portable system moves as a complete unit while connected. Setup requires one person and takes a few hours. The connectors lock securely into mobile rails for reliable alignment.

Two scalable kits are available: a 30-part kit with standard rails and a 20-part kit with compact rails. Each includes two mobile rails, a 6-foot connector and components. Custom connectors are available in 2-, 4- and 6-foot lengths.

Learn more at guffeysystems.com. **W**

FEBRUARY 2026

24

WOODSHOPNEWS

Oneida's Filter Shaker automates dust collector maintenance

By Jennifer Hicks

Oneida Air Systems has launched an attachment that vibrates filters to remove embedded dust from industrial dust collection systems.

The Quick-Clean Filter Shaker attaches to any Oneida dust collector using an 18-inch pleated cartridge filter. The device uses vibration to loosen fine dust particles, eliminating the need for manual cleaning with compressed air, according to the company.

"The Quick-Clean Filter Shaker was designed to be easily attachable and retrofittable to our units in the field, and to be easily integrated into our new system purchases as well," said Alex Witter, Oneida's general manager.

The company's dust collectors use cyclone separators that remove more than 99 percent of dust before it reaches the filter media, Witter said. The remaining dust



that bypasses the cyclone can form a layer on the filter.

"Before this product, our recommendation would be to take compressed air or some sort of reversed air method to knock out that fine material that does get through the cyclone," Witter said. "With the Filter Shaker, you turn on the switch and in a few minutes it will shake the filter so that fine filter cake drops off into the dust

bin below, and that prolongs the need to really deep clean the filter."

The Filter Shaker features a 40-watt, single-phase motor and an interval timer that runs up to five minutes. Dislodged dust falls into a collection bin beneath the filter.

The device costs \$349 and includes a steel mounting plate, hardware and 20-foot power cord.

Learn more at oneida-air.com. **W**

Courtesy of Guffey Systems, Oneida

LAGUNA TOOLS 

introduces the Revo 10|14 Benchtop Lathe in a compact 10" x 14" design. Features include a cast iron headstock and tailstock, digital speed control system, 10" swing over the bed, and 14" between centers. Learn more at lagunatools.com.



ELIAS WOODWORK 

has a new line of Modern Range Hoods available in wood and thermofoil finishes. "Designed to meet the growing demand for clean-lined, contemporary kitchen aesthetics, this new collection delivers elevated style paired with everyday performance," the company said. Learn more at eliaswoodwork.com.

DENIOS 

offers Flexible Heating Jackets for gas cylinders. "Complete coverage ensures uniform warming of the entire gas cylinder, providing advantages for gases such as SF6, Propane, Nitrogen, Oxygen, BC13, WF6, and HF," the company explained. "Thermostatically controlled blankets operate in a range from -40 to 104 degrees F, and feature 'fit and forget' 24/7 operation with no regular maintenance required." The jackets fit cylinders from 27-33 inches in circumference. Learn more at denios-us.com.



IRON BULL MFG., a manufacturer of standard scrap and waste hoppers, also makes custom hoppers with a size and design for specific applications. They are available with self-dumping, bottom drop, or 180-degree dumping functions. Learn more at ibullmfg.com.



ROCKLER

has introduced the Handy Bench that converts sawhorses, countertops, tables or the company's Rock-Steady Work Stand Kit into a go-anywhere workbench. The 16" x 32" benchtop is made of 1-1/2"-thick solid beech and features a Moxon-style, twin-screw vise that clamps workpieces up to 3" thick and about 10" wide between the vise screws, and a 4" x 4" gridded bench dog hole pattern. The Handy Bench sells for \$259.99. Learn more at rockler.com.

REV-A-SHELF presents the Girasolo Blind Corner Optimizer from its Craftsman Collection. It features two pullout trays that glide on a soft-close pivot hardware system, providing access to items stored in the back, and adjustable shelving. It fits 12", 15" or 18" openings. Learn more at rev-a-shelf.com.



Courtesy of manufacturers



WOODPECKERS

introduces the Adjusta-Joint Box Joint Sled, a template system that can be used to create any combination of pins and sockets. "A series of 62 steel spacers, each 1/8" thick, can be arranged in any configuration representing the pins and sockets of your box joint," the company explained. "Unlike the traditional box joint, where the pins and sockets are exactly the same along the length of the joint, Adjusta-Joint lets you put thin pins next to fat sockets, make the pins wider from one end to the other, make them grow to the center and then repeat the pattern to the other end." Learn more at woodpeck.com.

FEBRUARY 2026

27

WOODSHOPNEWS

THE QUIET EDGE

SOUND SOLUTION FOR TRANQUILITY



JUNIOR ACOUSTICS

This low-profile hardware and retractable seal system for wood doors up to 100 kg (220 lbs) offers effective sound attenuation while blocking odours, drafts, and light. Ideal for pocket and wall-mount sliding doors, these smooth automatic seals create a quiet interior perfect for office spaces and residential kitchens. Open the door to a peaceful environment.

Richelieu
YOUR HARDWARE
CHAMPION



TALK TO AN EXPERT
1-800-619-5446
media@richelieu.com



FREE 644-PAGE CATALOG!

The Industry's Leading Sourcebook for Metalworking & Woodworking Machinery
Request yours at grizzly.com/free-catalog

12" 7½ HP 3-Phase Table Saw

Industrial strength, compact frame

- Digital readout for bevel angle
- 36" Rip capacity
- Precision-ground cast-iron table
- Cast-iron trunnions
- Heavy-duty miter gauge
- Footprint: 22½" x 24"
- Shipping weight: ≈ 698 lbs.



MADE IN AN ISO 9001 FACTORY

G0697X // ONLY \$3295

\$349
FREIGHT
LOWER 48 STATES

14" 10 HP 3-Phase Sliding Table Saw

Rapid cutting for high-volume output

- Digital controls for blade height and tilt
- Programmable CNC rip fence
- Cross-slide table with chrome-plated slideway
- Adjustable blade guard with dust hood
- Vertical guide system with precision bearing rollers
- Footprint: 75" x 37"
- Shipping weight: ≈ 2176 lbs.



MADE IN AN ISO 9001 FACTORY

G0853 // ONLY \$16,950

\$599
FREIGHT
LOWER 48 STATES

15 HP 3-Phase Straight-Line Rip Saw

Repeatable accuracy, all day long

- 30–112 FPM variable feed speed
- 6"-Wide chain-feeding conveyor table
- Extra-long infeed table and rip fence
- Built-in anti-kickback fingers
- Heavy-duty pressure rollers
- Footprint: 35" x 35"
- Shipping weight: ≈ 2243 lbs.



G0524 // ONLY \$12,995

\$599
FREIGHT
LOWER 48 STATES

20" 5 HP Variable-Speed Planer

Engineered for heavy-duty surfacing

- 92-Indexable-carbide insert helical cutterhead
- Digital table height scale
- 10–28 FPM variable-feed control
- Precision-ground cast-iron extension wings
- Pedestal-mounted controls
- Footprint: 23½" x 29½"
- Shipping weight: ≈ 820 lbs.



MADE IN AN ISO 9001 FACTORY

SB1109 // ONLY \$4895

\$399
FREIGHT
LOWER 48 STATES

17" 5 HP Bandsaw

Feature-packed and production ready

- 16" Resaw capacity
- Cast-iron fence with extruded aluminum resaw fence
- Rack-and-pinion upper guide adjustment
- Blade tracking window
- Foot brake stop
- Footprint: 29½" x 23½"
- Shipping weight: ≈ 784 lbs.



MADE IN AN ISO 9001 FACTORY

G0636X // ONLY \$3995

\$399
FREIGHT
LOWER 48 STATES

5 HP Sliding Table Shaper

Master end-grain with sliding precision

- ¾", 1", and 1¼" Spindles
- Precision-ground cast-iron sliding table
- Extruded aluminum miter fence
- 0–60° Left/right cast-iron miter gauge
- Four spindle speeds
- Footprint: 25½" x 26¾"
- Shipping weight: ≈ 757 lbs.



G8621 // ONLY \$4895

\$399
FREIGHT
LOWER 48 STATES

Horizontal Boring Machine

End guesswork with exact hole placement

- Pneumatic clamp and spindle travel
- Accepts RH threaded boring bits
- Precision-ground cast-iron table
- Dovetailed miter gauge and slots
- Foot pedal control
- Footprint: 15½" x 27½"
- Shipping weight: ≈ 346 lbs.



G4185 // ONLY \$2495

\$255
FREIGHT
LOWER 48 STATES

21-Bit Line Boring Machine

Expedite cabinet and furniture making

- 32mm line boring system
- Numerical downfeed stroke indicator
- Back- and cross-fence scale positioning
- Adjustable fence flip stops
- See-through guard
- Footprint: 36¼" x 28¾"
- Shipping weight: ≈ 514 lbs.



G0643 // ONLY \$5850

\$349
FREIGHT
LOWER 48 STATES

5 HP Cyclone Dust Collector

Dust collection for professional shops

- 0.2–2 Micron filtration
- Ramped inlet maximizes dust movement
- Dual pleated filters with cleaning brushes
- 55-Gallon steel collection drum with casters
- 2184 CFM airflow capacity
- Footprint: 63" x 56⅞"
- Shipping weight: ≈ 632 lbs.



G0442 // ONLY \$4650

\$349
FREIGHT
LOWER 48 STATES

Extreme Series Dovetail Machine



Dual Pneumatic Clamping System



Micro-Adjustable Spindle Head

Spring-Loaded Carriage

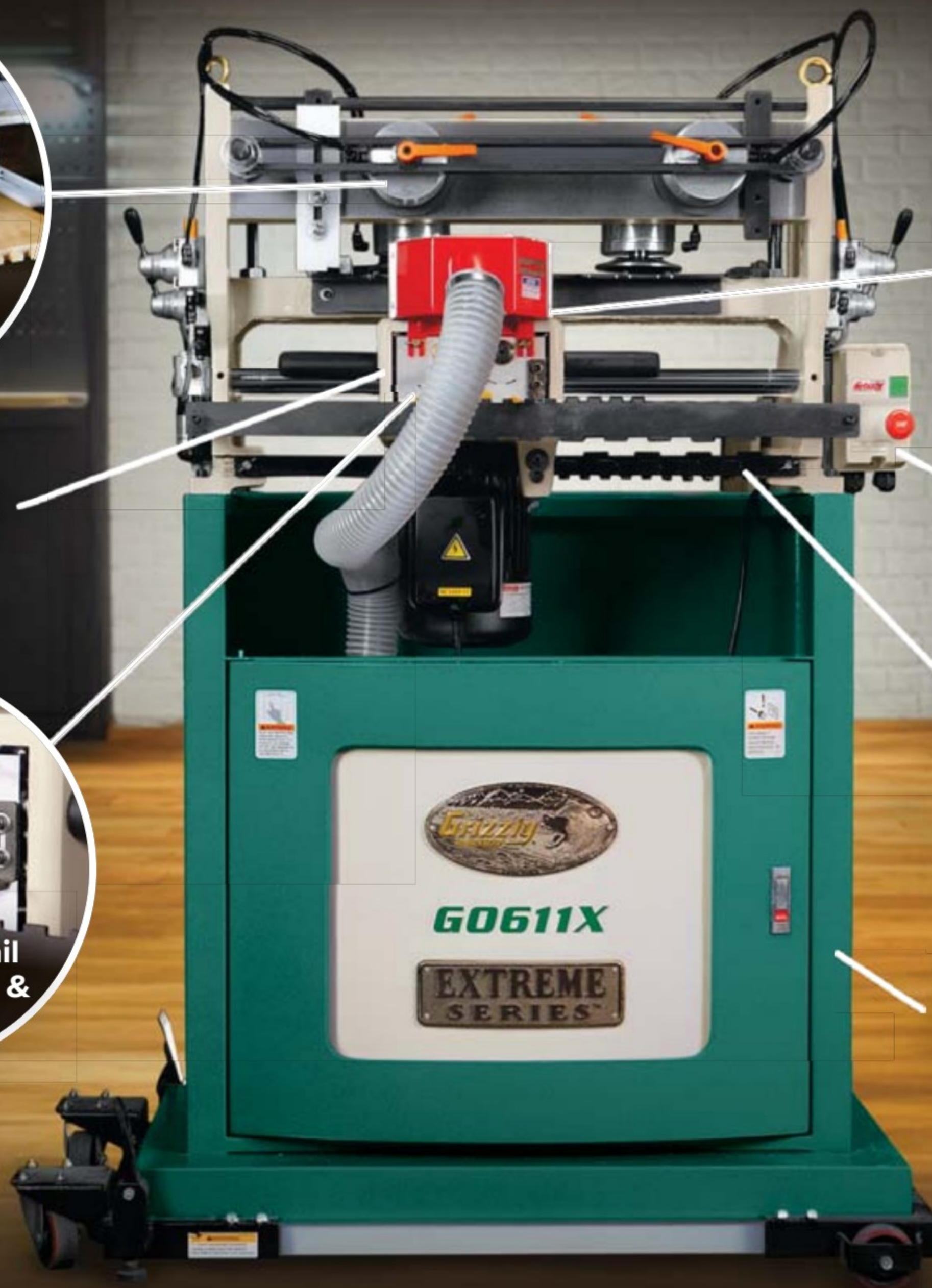
Magnetic Switch with Thermal Overload Protection



Adjust Dovetail Height, Depth, & Thickness

Four-Way Template for Different Size Dovetails

Precision-Milled Cast-Iron Frame



See the Grizzly dovetail machine in action!

G0611X

COMPETITIVE PRICE

\$5050

\$299
FREIGHT
(LIMIT 48 STATES)

Precision Dovetails in Minutes

If your dovetail jig is limiting your production, it's time to upgrade. The Grizzly G0611X quickly makes strong, attractive half-blind dovetails, allowing you to cut a 4-sided drawer in under two minutes. Its robust cast-iron frame and spring-loaded carriage allow smooth operation, while the micro-adjustable spindle ensures a perfect joint fit every time. With 16½" capacity and quick-acting pneumatic clamps, this machine is the ultimate efficiency upgrade for all your precision joinery needs.

Specifications:

- Required power: 110V/220V, single-phase, 10A/5A (prewired 220V)
- Spindle speed: 18,500 RPM
- Dovetail bit: 10° Angle x 5/8" long
- Maximum dovetail height: 3/4"
- Maximum thickness: 2 3/8"
- Maximum stock size: 59" L x 16 1/2" W
- Minimum stock size: 7 7/8" L x 2 3/8" W
- Footprint: 37" W x 21 1/4" D
- Dimensions: 38 5/8" W x 26 1/2" D x 56 7/8" H
- Approximate shipping weight: 539 lbs.

grizzly.com

800-523-4777
#GRIZZLYTOOLS



FINANCING AVAILABLE

Please visit grizzly.com for up-to-date pricing.

Due to rapidly changing market conditions, our advertised prices may be changed at any time without prior notice.

WARNING! †1: Cancer & Reproductive Harm

Some products we sell can expose you to chemicals known to the State of California to cause cancer and/or birth defects or other reproductive harm. For more information go to www.P65Warnings.ca.gov.





THE UPMARKET PIVOT

Northland Woodworks ditched low-margin builder cabinets for high-end custom work after recession revealed new opportunities

By Jennifer Hicks

Northland Woodworks of Blaine, Minnesota, has transformed from a garage startup into a high-end custom cabinetry firm serving wealthy clients throughout the Minneapolis region and beyond.

Now run by husband-and-wife team Matt and Leah Krig, the company was founded in 1977 by Matt's father, Gary. Matt, who joined full-time in 2003, says he was frustrated with the company's direction until the 2008 recession forced a strategic pivot.

"When the recession happened, it forced us to get better and forced us to find a way to become recession-proof. The people that were spending money at that point were the people that had it," Krig says. "We found some pretty wealthy clients through our network, and what they wanted was not what we were producing."

Krig emphasizes that he and Leah turned the company around by having the mantra of being a business first and a cabinet shop second. Working from an 18,000-sq.-ft. shop and showroom, they continue investing in manufacturing improvements while employing eight craftspeople ready to build unique projects to the highest standards.

JOINING THE FAMILY BUSINESS

Gary initially operated Northland Woodworks from his garage in Mounds View, Minn., later purchasing a building as the company grew. In 1993, he bought the current 30,000-square-foot facility, which the company shares with a tenant.

Matt Krig first joined his father's operation as a teenager to earn money for a BMX bike, spending years sweeping and sanding. A 1996 trip to the International Woodworking Fair (IWF) in Atlanta opened his eyes to industry possibilities.

"That trip was wild for a 16-year-old. It was my first exposure to the possibilities of automation, exotic European methods, tooling, hardware, and so much more," Krig says.

"There was so much energy at that show, but I felt dampened by my dad as I was told the behemoths of machinery that were spitting out products were not for us. It was hard to come back to plunge cutting notches for double demountable hinges in face frame cabinets after seeing some really cool concealed hinges from Austria, but I was told that they were too expensive, and 'our customers would never pay for that.'"

Krig studied business at Western State College of Colorado in 1998 before transferring to the University of Wisconsin-Stout. He switched from business and accounting to industrial design. He also met Leah, who was studying interior design. Both graduated in fall 2003, and Matt joined the



family business.

"During my last summer break from college, my dad and I began talking about my future," he says. "Up until this discussion, I had given little consideration to the idea of coming to work full-time and working into owning the shop. I didn't care for the culture or the aversion to change and technology."

EXPLORING POSSIBILITIES

When Matt joined, the shop employed about 15 workers and primarily built kitchen cabinets. Matt married Leah in 2006 and recruited her to the business in 2007.

"I needed her skills from her background in commercial and residential interior design, sales and project management. We worked our tails off at the shop by day and at night we were rehabbing rental properties we'd picked up cheap and remodeling houses to flip," he says.

Matt pushed for technology upgrades, noting the company's aging point-to-point router couldn't compete with newer nested routers with spoil boards. Despite progress, the 2008 recession threatened the business.

"We barely survived the big recession, and in the end the silver lining is that it pushed us to get uncomfortable. The slowdown forced us to work on the business instead of only working in the business. Leah and I worked to get outside of our shop and gain new perspectives and skills we weren't going to get organically. We began being more deliberate and saying 'no', defining our marketplace and becoming a better business.

"Up until that point we just filled orders, we showed up and did a lot of builder homes, just repeats of the same things for the same builders."



The shop takes the extra step of printing 3D mockups.

While the company had previously offered basic face-frame overlay cabinets, recession-era clients demanded elaborate designs, frameless styles and grain-matched veneers. The company now specializes exclusively in inset and full-overlay cabinet styles.

"We'd never done a six-figure job until 2009, then we started getting into multi-six-figure jobs," he says.

BRANCHING OUT

The Krigs started attending the Association of Woodworking & Furnishings Suppliers (AWFS) Fair in 2011, joined the Cabinet Makers Association and visited shops nationwide.

"We worked on building a great company culture and cultivating trust and communication with architects, designers and GCs. Eventually, it got to a point where I was asked to speak and present at some of the trade shows that I'd previ-

ously received some of my education," Matt says.

"We were making margins previously unheard of and lining up the sort of work we had only dreamt of doing some exciting new types of projects, while my dad was pushing to do high volume, low margin builder cabinets. He ended up retiring in 2013, and we began to purchase the business."

The company now focuses on residential projects for affluent Twin Cities clients, with additional work on luxury cabins, lake homes and vacation properties nationwide.

"With our background and what we learned, we were able to differentiate ourselves from other cabinet shops that didn't speak the language of architects and designers," Krig says. "We put a very heavy emphasis on professional shop drawings. The cabinets will be the cabinets, but ultimately, getting the job has to do with how well you communicate with an architect or designer."

THE NEXT CHAPTER

Through networking, the Krigs say they've gained mentorships, discovered new methods and built industry friendships.

Krig has stepped back from speaking at trade shows to



Matt and Leah Krig in the shop's showroom.

focus on touring shops nationwide with three other shop owners twice a year. He consults with other shops on business management and finishing, and invites collaboration with industry peers.

This year, he and Jeff Langford of Outlaw Woodworks in Three Forks, Mont., will host a spring woodworking business event in Bozeman, Mont., and another this summer in Minneapolis at their respective shops. They'll share solutions for project management, pricing and procedures, plus discuss financials, operational metrics and strategies for running high-margin residential cabinet businesses.

Meanwhile, Krig continues retooling the shop and planning for succession.

"The goal is to create a business — by that I mean a saleable entity, not just a cabinet shop that's only worth what it produces or the value of the sale of the used machines," he says. "We have three boys — 8, 11 and 15 — who all enjoy various parts of the business, but

the odds of three partners and a third generation succeeding are statistically abysmal.

"The best we can do is continue on the path we're on by creating operating procedures and systems. I'd love to see them take it and run with it, and I hope I'm smart enough to get out of their way."

Learn more at northlandww.com. **W**

New England Drawer

3 DAY * Turnaround on beautiful Dovetail Drawers

- The gold standard of Dovetail Drawers
- Fast turnaround times
- Competitive pricing
- 2 Drawer grades available
- High customer satisfaction
- Undermount slides available
- USA Made
- Ships nation wide

ORDERS & INFORMATION:

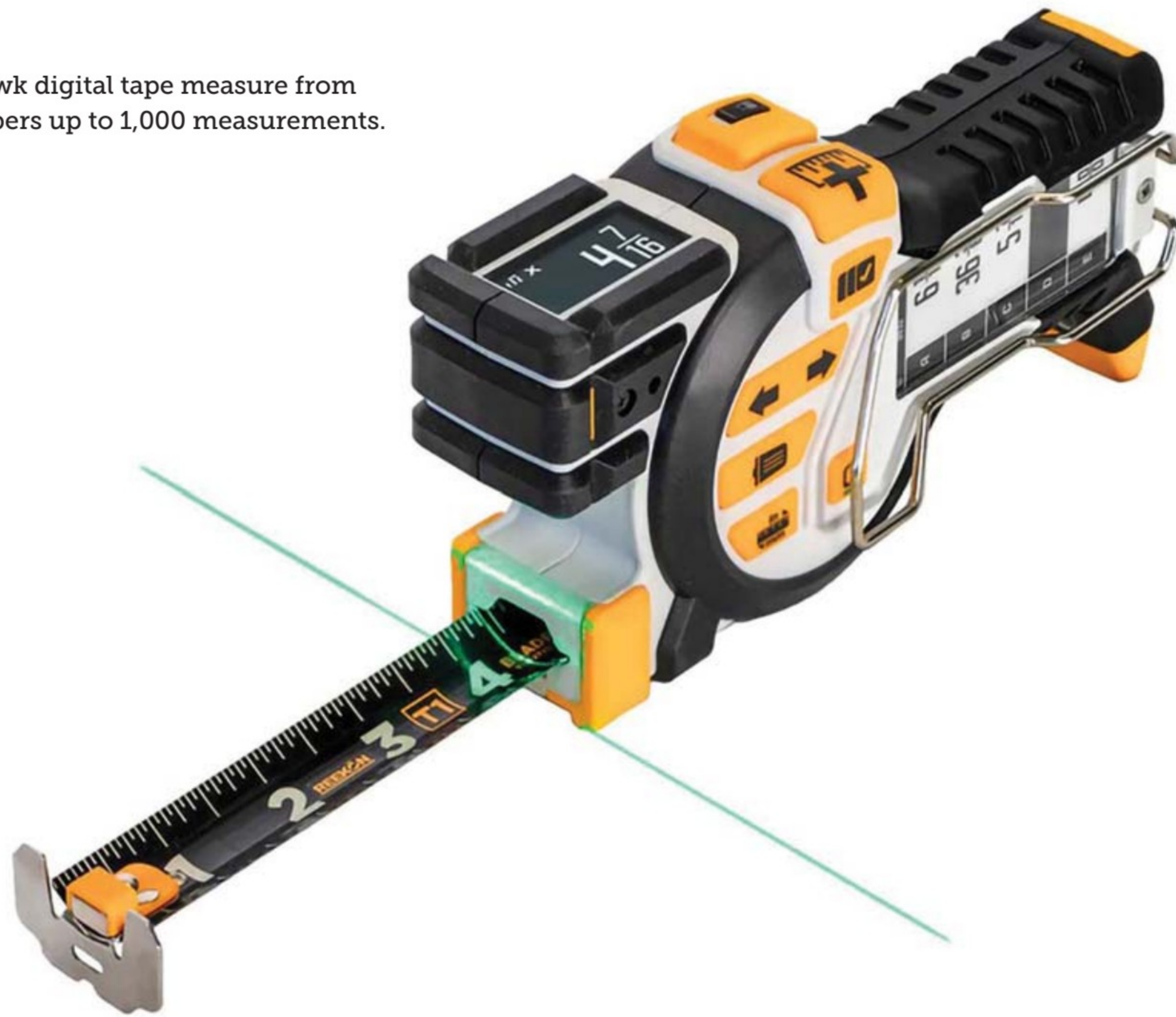
603-926-2588 | 866-391-3863
www.newenglanddrawer.com

*Restrictions apply



Made by
cabinetmakers
for cabinetmakers

The T1 Tomahawk digital tape measure from Reekon remembers up to 1,000 measurements.



Measure smarter

Innovative squares, gauges and digital systems take the guesswork out of workshop precision

By John English

Measure twice and cut once. That's one of the oldest adages in woodworking, and most of the time it's still true. But not always ...

The Morgan Square (themorgansquare.com) is a measure-once device for framing. It's been around since 2018 but gained some real traction at the 2025 AWFS Fair in Las Vegas. A carpenter clicks a tape measure into the square, hangs the tape's clip on one end of a top or bottom plate, and then slides the square along the tape to mark both sides of each stud. It can be used around openings to locate trimmers, king studs, cripples and sills, and it can really speed up the design and layout processes. Made from aluminum with laser-etched markings in imperial and metric scales, it's compatible with most types and brands of tape measures. There are 8" x 8" and

8" x 12" sizes in a variety of colors, and a less expensive plastic 8" x 8" version.

Another measure-once device, the **MicroFence System** (microfence.com) eliminates test cuts. It turns a hand-held router into a precision milling machine for straight, circular and elliptical tasks. The system can be fitted to more than 60 models of routers, laminate trimmers and rotary tools. It's ideal for plowing dadoes and grooves for slightly over- or under-sized sheet goods and boards, and it can also be used for inlay work, mortise and tenon joinery, hinge and lock installations, fluting, reeding, mating radii, and sliding dovetails, for example. Plus, it's easy to reset so a woodworker can reproduce previous set-ups.

The very simple **WoodRiver Micro-Adjust Flip Stop** from Woodcraft (woodcraft.com, item 194950) is ideal



The WoodRiver Micro-Adjust Flip Stop from Woodcraft has a knurled knob for making micro-measurements up to 38" either way.

for pre-measuring on miter saws, router tables or drill press tables. It's machined from aluminum extrusions and when it's not needed, it just flips out of the way. The stop is micro-adjustable, front and rear, and there's a knurled barrel with nylon wear surfaces for adjustments up to 3/8" on either side.

JessEm Tool (jessem.com) has recently added a new quick angle square; a collection of 6", 8", 12",



The Micro-Fence system allows for minute adjustments when measuring for cuts such as plowing dadoes for under-sized plywood.

150mm, 200mm and 300mm layout squares; a line of 6", 12", 18" and 24" Sword T-squares, and several versions of a new Tool Setting Gauge.

Woodpeckers (woodpeck.com) have taken the idea of trammel points on a ruler to new lengths with the introduction of the **Cal-ZILLA**. It comes with a 49-1/2"-long rule, although it will fit several shorter models from the company. The caliper jaws can handle inside or outside measurements up to 46", and they ride across the top of the rule on low-fiction UHMW glide strips. The locking mechanism con-

tact point is machined from Delrin, which will lock securely without marring the anodized aluminum of the rule. The ruler is graduated with metric measurements on one edge and inches on the other, both starting from the same end. And Cal-ZILLA's inside measuring tips match the outside jaws precisely, so when a woodworker measures a stopped groove, the tool provides the required length of the tongue on the joining piece. An included pair of conical Hole Center Attachments are used to measure the precise distance between any two

Raw wood and sealer sanding with one machine

Key advantages:

- 18 pre-set programs for top flexibility & abrasives change overs
- Easy to Program, Run and Maintain
- Fast & Easy to change sanding heads/abrasives
- Highly economical to operate



GIBBS GROUP
NORTH AMERICA

877-785-0274
A.STAALNER@GIBBSGROUPNA.COM
GIBBSGROUPNA.COM

Wagner has launched the new L5300 industrial hand-held wood moisture meter that can measure moisture in stickered stacks.



holes, center-to-center.

Garrett Wade (garrettwade.com) has introduced new 7" and 12" layout squares that are marked for 16th and 32nd scales (with fractions) and all major angles. They also have marking holes every 16th of an inch. The base is magnetized for stability, and the set includes both squares, a mechanical pencil with additional leads, and a sturdy plastic storage case.

A couple of snap gauges from **Carter Products** (carter-products.com) can accurately measure board thickness, and the company says that they're quicker, more accurate and easier to use than standard caliper gauges. The gauges are spring loaded and have flat disc contact pads for even, accurate measurements of flat-to-flat surfaces. They come with a battery and protective storage case.

The deceptively simple **FitFinder** from MicroJig (microjig.com) will center stock instantly with no measuring

or math. It's ideal for half-laps, setting router table bit heights, centering shaper cutters and the like.

Measuring for shelf pins just got a bit easier with Rockler's new **Shelf Pin Drilling Jig** (rockler.com, item 74448). It sets up rows of evenly spaced shelf pin holes in assembled or unassembled cabinets using just a handheld drill. There are two rows of holes with 32mm hole spacing, and the jig is auto-indexing. It comes with both 1/4" and 5mm self-centering drill bits and indexing pins.

MEASURING ON MACHINES

There are several systems available that allow a woodworker to type in a measurement on a touchscreen and then a stop on a miter saw fence will automatically move to the correct position.

The **SawGear Touch** from TigerStop (tigerstop.com) was recently updated and features a new touchscreen

RazorGage offers two programmable measuring systems for miter saws, the basic RGxT and the high-volume RG3 (shown inset).



control that easily adapts to a shop's existing miter saw. It includes Optimization and Crown+MiterPro software, which is full compatibility with PyperServer Lyte (a program that lets a shop cut parts directly from BIM or CAD models). The company makes it easy for existing customers to update by swapping out an older SawGear power head for the new SawGear Touch. The latest version of Crown+Miter can be used for crown molding, trim and baseboard on the jobsite. SawGear Touch also supports label printing, toggling between metric and imperial, and conversions from fractions to decimals.

Among its many industrial saw accessories, **RazorGage** (razorgage.com) offers two programmable saw measuring systems, the basic automatic positioning RGxT and the high production level RG3 that use a Windows interface. The RGxT has a hi-resolution touchscreen interface, and it eliminates both the opportunity for misreading tape

measures or scales, and the need to walk over to reset manual stops. The RG3 can be used as an automatic pusher or measuring stop.

MEASURING DIGITALLY

Wixey (wixey.com) is perhaps familiar to woodworkers because of its table saw fence digital readouts. The company also makes gauges for setting table saw tilt angles and blade heights, plus digital monitors for routers, planers and drill presses. And the catalog includes digital protractors and rulers for layout and measuring.

The **ELaser Pro 3D CL** and **Xpress 3D** from ETemplate Systems (etemplatesystem.com) can measure a space including doors, windows, switches, and outlets, and then import the 3D room to cabinet design software for layout and fabrication.

Several manufacturers including **Lexivon**, **Idara**,



New measuring tools from JessEm Tool include small and large tool setting gauges, Sword T-squares, and a quick angle square.



The Morgan Square can dramatically reduce the layout, measuring and marking time spent on wall, window and door framing.



MicroJig's FitFinder completely eliminates the need to measure when setting up machines to make cuts that are exactly half height.

Fanttik and **Prexiso** have developed affordable digital tape measures that combine a laser and digital readout with a traditional recoiling steel rule. And **Reekon** offers the T1 Tomahawk, a digital tape that can store up to 1,000 measurements.

The new and compact **Blaze GLM100-23 Professional laser measuring device** from Bosch (boschtools.com) includes a brighter graphic display for work in low-light conditions. The straightforward display includes intuitive icons, a big-number mode, and upgraded contrast to make it easier to read. It has two-button operation, one for measuring and one for rounding from 1/2" up to 1/32". There's a default real-time measurement mode that automatically adjusts closer to or farther from the target, and a click wheel for easy setting and function navigation.

MEASURING MOISTURE

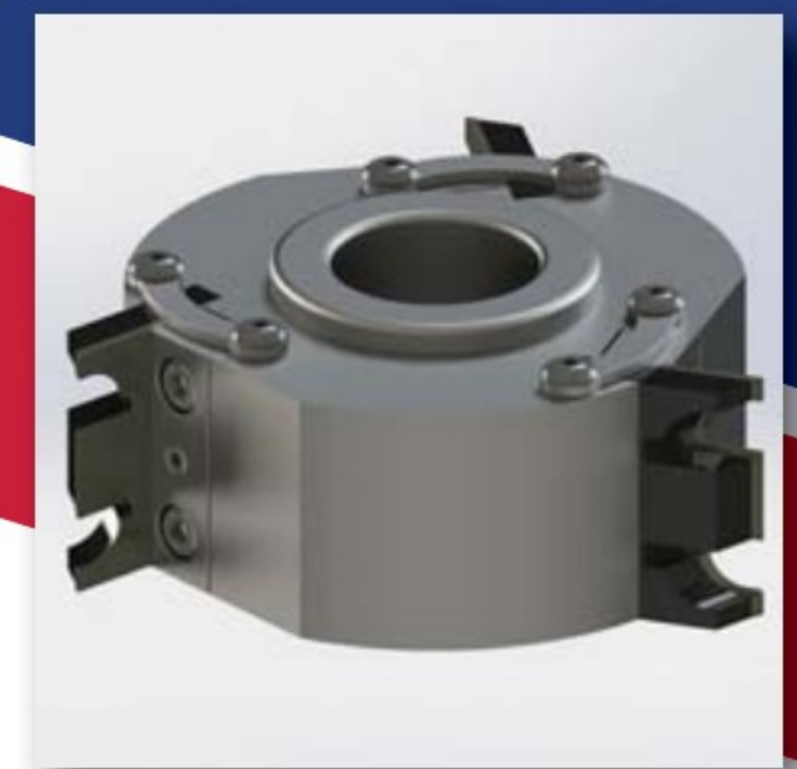
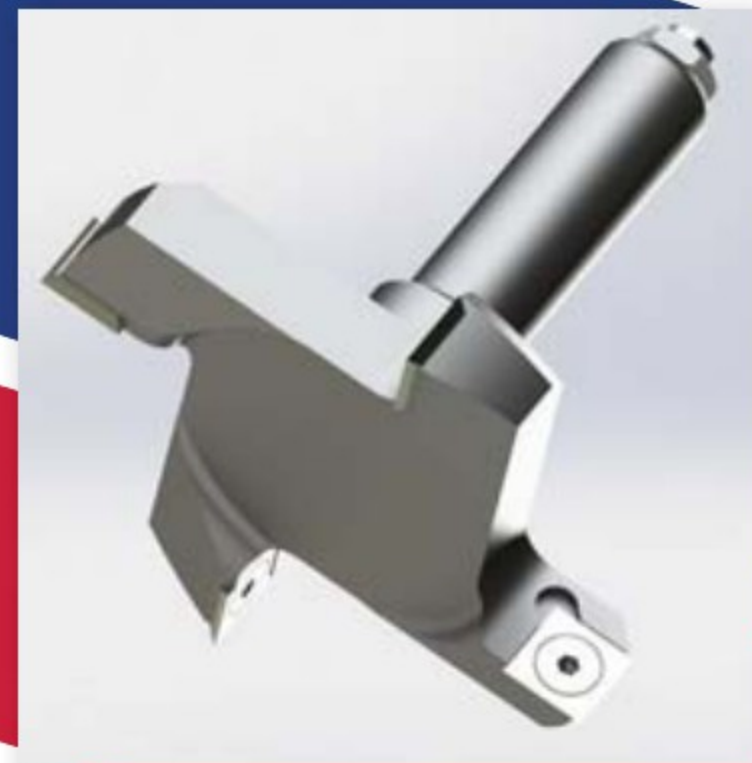
Not all measurements in the woodshop are linear, and one of the most important quantifiable values is moisture level.

The **Ligno-Scanner D** from Lignomat USA (lignomatusa.com) is a single depth pinless moisture meter that measures moisture content (MC) down to 3/4" inside



VEXOR

Custom Woodworking Tools
Denver, CO



Router bits, shaper cutters,
insert tools, profile knives and
more for the woodworking industry.
Family owned and operated for over 40 years

Vexorcwt.com | Toll Free: 877.879.8906



Woodpeckers' new Cal-ZILLA can deliver accurate measurements up to 46", and the inside tips match the outside jaws precisely.



Bosch offers a brighter, sharper and more user-friendly experience with its new Blaze GLM100-23 professional laser measuring tool.



SawGear Touch from TigerStop works with specialty software for crown moldings, optimized lengths, and cutting parts from CAD.



The Ligno-Scanner D.

the wood. Simply dial in the species, lightly press the meter to the wood, and learn its MC. The idea of pin-free meters is that they are non-invasive and don't leave any dimples or holes in the wood. That's a serious issue for some of the more expensive species in cabinet and furniture building. Lignomat offers a wide range of meters

Wagner Meters (wagnermeters.com) has introduced its new L5300 industrial hand-held moisture meter to replace the existing L622 model. The new meter is engineered to enhance performance, streamline workflows, and deliver precise insights for lumber producers, sawmills, and kiln operations, according to the company. It features visual histogram readings, a bright backlit screen for use in dark kilns or storage areas, and a customizable species list. It's also compatible with Wagner's L722 Lumber Stack Probe, allowing users to detect hidden moisture deep within stickered stacks. That can help reduce drying defects, improve quality control, and prevent costly rework. The new meter is also integrated with Wagner's new WoodStat Pro software, which enables users to import, analyze, and report moisture data. **W**

SANDMAN Products

Sanding Tables, Sanding Booths, & Inspection Lighting



SAND PRO®

- Sanding Tables
- Sanding Booths
- Inspection Lighting

Phone: 800-265-2008 • info@sandmanproducts.com • www.sandmanproducts.com



The Minimax LS stroke sander can sand problem surfaces where some areas of a panel or board need more work.

Sanding problem surfaces

Specialized machines address inconsistent surfaces, complex profiles and production bottlenecks

By John English

Standard sanding does a great job on standard surfaces but often falls short when materials misbehave or assume nonlinear shapes or profiles. Fortunately, specialty machines can address most of the challenges presented by problem surfaces.

A manufacturer of several all-in-one sanding machines, **Apex Machine Group** (apexmachinegroup.com) has identified five reasons to upgrade in this area. The first of these is when the surface quality is inconsistent to the point that achieving a smooth, uniform finish across different types of wood can be difficult. Next up is the amount of time that hand-held sanders can take, which can slow up other automated processes and increase labor costs. Then there are the different ways that softwoods, hardwoods, plywood and engineered materials respond to abrasives. Beyond that, uneven thicknesses and tolerances can be an issue. And dust management, always on our minds, is easier to handle on stationary machines rather than handheld tools.

Apex offers three wide belt machines — the entry-level 1000, the heavier production 2000, and the heaviest grade 3000. They're designed to handle such applications as calibrating, white-wood sanding, veneer, sealer, brushing/denibbing, distressing, or a combination of these applications. The two larger machines can also be set up for cross-grain removal.

For moldings and thin strips, the **Chatternator** (profile-sander.com) may be the solution. It was specifically designed to sand out router and knife chatter marks on trim or molding, which can be a tedious and time-consuming task. It was invented by Colorado woodworker Bill Grom, and there are models for 6" and 12" material widths. The patented machine can mold and sand trim in one operation, completely eliminating hand sanding.

Another specialty solution, the **Gibbs Cup Brush Sealer Sander** (gibbsgroupna.com), uses up to eight flat circular plates that have abrasive flaps attached to their undersides to address door faces being passed beneath



Apex Machine Group offers wide belt sanders that can handle tasks such as veneer sanding, distressing and cross-grain removal.

com) is a family of nine woodworking drum sanders that use brushes and/or abrasives to deliver coating-ready surfaces. There are models with both open and closed ends to accommodate a surprising range of panel or board widths. Some of these machines are appropriate for small shops, while others are designed for large production runs.

Grizzly Industrial (grizzly.com) carries a vast range

of sanders from brands that also include South Bend, Woodstock and Shop Fox, among others. There are single- and double-head wide belt machines that can handle stock from 15" to 51" wide, plus oscillating edge sanders, single- and double-drum units, stroke and brush sanders, disc models, oscillating spindle sanders, belt and disc combos, and even benchtop baby drum and oscillating drum sanders. The catalog also includes several specialty machines such as drum and flap units. Of particular interest to smaller shops making doors and drawer fronts is the G0404, which is an 11" open-ended benchtop oscillating drum sander. Its side-to-side oscillating action minimizes sandpaper clogging and heat buildup, but that feature can be turned off for highly figured woods or unique projects. It can handle stock up to 3" thick and 22" wide, and panels all the way down to 1/8" in thickness. The variable feed conveyor runs up to 15 fpm, and the single-phase machine uses hook-and-loop sandpaper.

Felder Group USA offers two brushing machines, three brushing and sanding units, three edge sanders, and 13 wide belt sanders. Among several new models showcased on the company website (felder-group.com) is the Finebrush 953, which now joins the 1353 and 1355 in this category. These machines are designed to sand paneled doors, profiles, frames, and textured wooden surfaces. They use either three or five sanding brushes, disc brushes, or cleaning brushes for coarse, fine, finish, and intermediate lacquer sanding. And each individual brush sanding unit can be equipped with two different sanding grits. The new 953 has a smaller footprint than the others and has an infeed table that can be adjusted electrically in 1/10mm increments. Roller table extensions on both the infeed and outfeed are available for all three machines, and the two larger machines can also be equipped with a vacuum table.

In addition to edge, shape/sand, wide belt, planer sanders and units built to handle curved and round stock, **Castaly Industries** (lobomachine.com) also builds half a dozen machines that are specifically made for sanding contoured surfaces. They range from a sander with two top heads (the SD-1242T2-TEX) that accommodates work up to 12" x 4" to the DS-5404-TEX which has four heads and a 54" width capacity. Among the other models

Martin Woodworking Machines carries half a dozen wide belt machines from the Italian manufacturer EMC with widths up to 53".

EMC
Woody 1100



EMC
Mercury 1350



EMC
Mercury 1100



EMC
Giant Dual CC



EMC
Giant 1350



EMC
Giant 650



between these two is a 25" unit, the DS-2502-TEX, that can handle most cabinet shop requirements. It can be used with either two or four steel and nylon brushes to enhance wood grain, or it can deliver an aged appearance by scratching the surface. It comes equipped with a high-efficiency dust collection system, an industrial-grade conveyor belt, and variable speed.

WIDE BERTHS

Woodcraft (woodcraft.com) carries more than 50 sanders from makers such as Powermatic, JET, Safety Speed Mfg., Laguna, Oliver, Festool and Rikon. One small-shop machine earning solid reviews is a JET 18" open-ended drum sander (item 423465, model JT9-723530K) that runs on household current. The drum is a sizeable 3-1/2" in diameter, and the sander can dress panels up to 36" wide in two passes. Open-ended sanders can quickly tame



The G0404, an 11" open-ended benchtop oscillating drum sander, is one of a huge range of sanders available from Grizzly Industrial.



Cantek's new compact E6 edge sander has adjustable speed, and the company's larger LBS300-5S is a three-sided brush sander.

uneven glue joints and, with grit changes, reduce or eliminate problem surfaces such as scratches, swirls, raised grain and blotch. They can also help reduce sanding all the way through veneers, which is all too common with belt or random orbit tools. The drum on the JT9-723530K is designed to dissipate heat, and the variable speed can feed stock at rates up to 10 fpm. Feed rate control is another feature worth looking for on any sander that will be used to address problem surfaces.

Safety Speed (safetyspeed.com) offers 37" and 43" wide belt sanders with photo-electric belt tracking and pneumatic belt tensioning. The narrow model's belt length is 60" and the wider one takes a 75" long belt. That's an important consideration when sanding challenging surfaces such as veneer or softwoods. A longer belt has more abrasive surface, so it takes longer to wear or clog, which means less downtime changing belts. But there's also less heat build-up. Softwoods often exhibit pockets or streaks of sap or pitch/resin, and these fluid residues can heat up during sanding if the belt doesn't have a chance to cool down. Softened pitch will become more integrated within the grain, which often causes problems later during staining, or while coating in the spray booth.

Martin Woodworking Machines (martin-usa.com) now carries six new wide belt sanders that are manufactured



DS-3702-TEX



DS-2502-TEX



SD-1242T2(TEX)



DS-5404-TEX



DS-5402-TEX

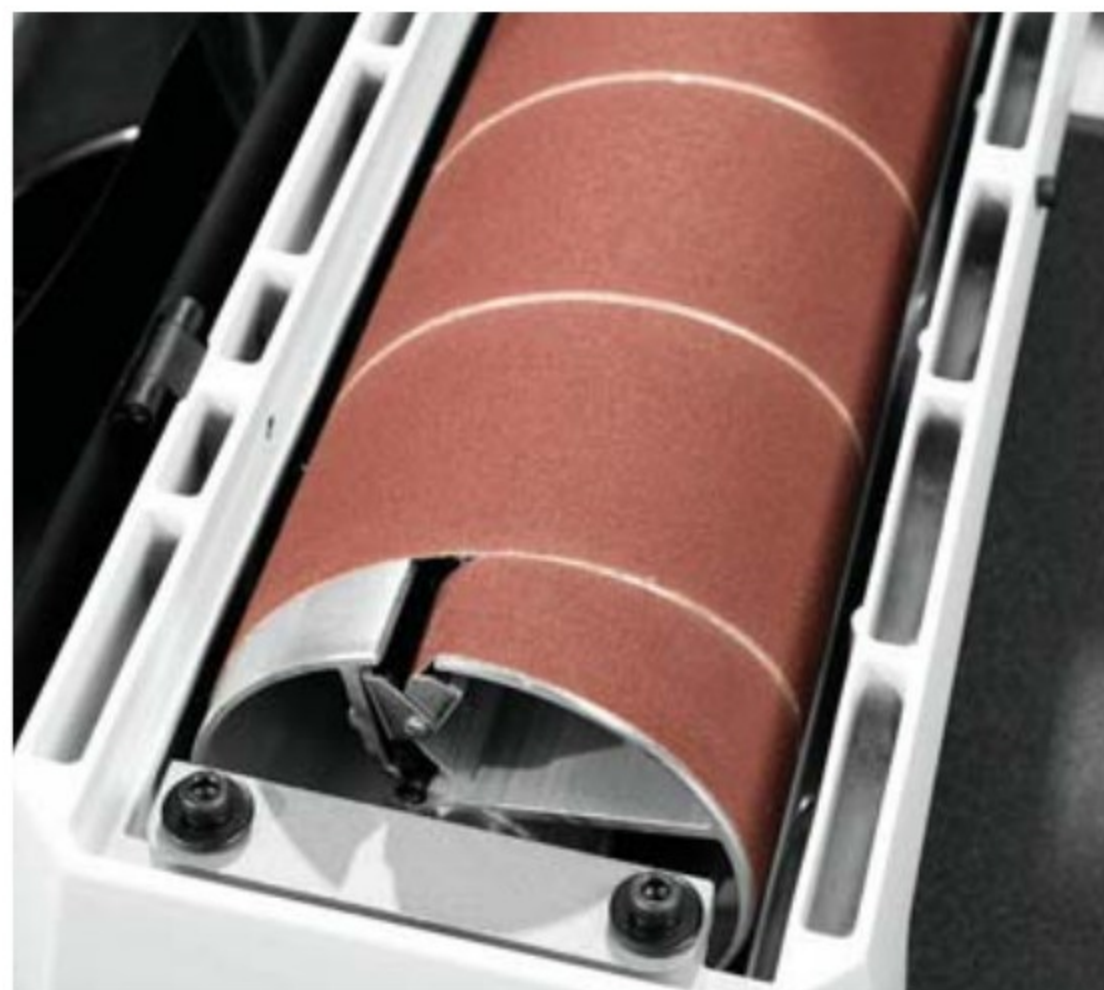


DS-2504-TEX

Lobo/Castaly makes half a dozen machines specifically for sanding contoured surfaces, including the 25"-wide DS-2502-TEX.



Woodcraft Supply carries the JET JT9-723530K, an 18" to 36" open-end sander with tool-free paper changing.



by the Italian company Ercolina Macchine Calibratrici (EMC), which has been part of the Felder Group since 2023. Some of the models have capacities up to 53" wide. Various machines have single or multiple sanding heads, and there are options for roller, roller/pad, and segmented pad abrasion. Because of features such as variable speed, touchscreen controls and vacuum tables, they're capable of fine calibration, high-level stock removal, and extremely fine finishing on panels, cabinets, and doors.

A very broad and comprehensive line of DMC, Minimax and Formula specialty sanders from **SCM Group North America** (scmgroupp.com) can sand any problem surface, using options such as wet, stroke, and multiple head machines. Among these, the Minimax LS stroke sander has a long, narrow belt with a double gooseneck for sanding panels and boards. The big advantage of a stroke sander over a wide belt machine is the level of spot control. The entire workpiece is visible at all times, and the operator simply moves a platen down to let the traveling belt make contact with the wood. This is an excellent way to sand problem surfaces where specific areas of a panel or board may require a little more work than others.

The bottom line is that sanding problem surfaces can certainly be addressed with elbow grease and excessive shop time, but they can also be tackled with specialty machines that are designed to reduce the workload, speed up the process, and deliver more consistent results. **W**

Fine Furnishings honors top exhibitors at 30th show

By Jennifer Hicks

The Providence Fine Furnishings Show concluded its 30th anniversary Nov. 7-9 at the WaterFire Arts Center in Providence, R.I. The three-day event featured furniture, accessories, home decor and fine art. The show included work from students in the furniture-making program at North Bennet Street School in Boston. A select group of craftsmen also offered jewelry, fiber arts and clothing.

A highlight was the Exhibitor Choice Awards. Winners received blue ribbons for their booths and gift cards from Rockler Woodworking & Hardware.

The winners by category:

- Furniture: Sam French, Gill CC Woodworks in Gill, Mass.
- Accessories: Alyssa Franklin, Lady & the Lamp Studio in Coventry, R.I.
- Fine Craft: Jana Rice, Coiled Rice Studio in Providence
- Fine Art: Nathaniel Fuchs, Nathaniel Fuchs Art in Warwick, R.I.
- Student: Zach Reynolds, North Bennet Street School in Boston
- Other: Lincoln Pollock, Arcwood Jewelry in Warren, RI; and Shanna Barrow, Phyllis & Elsie Jewelry in Waltham, Mass.

Learn more at finefurnishingsshows.com.

FIVO AT THE MANIFEST GALLERY

fivo Design in Andover, Mass, recently had its work featured in *Furniture*, a juried exhibition at Manifest Gallery



Sam French, owner of Gill CC Woodworks.



The booth of Gill CC Woodworks at Fine Furnishings.



Fine Furnishings featured student work, including this music stand by Zach Reynolds.

in Cincinnati. The modern furniture company's MOD5 Pro was among 23 works by 18 artists selected from 85 submissions representing 21 states and five countries.

Jason Franz, executive director of Manifest, organized the exhibition to highlight functional and conceptual works exploring the intersection of design, craft and living spaces. Selected works will be included in the Manifest Exhibition annual publication.

"It is humbling to be selected for Manifest's *Furniture* exhibition and a true honor to be included amongst such a talented group of artists," said Stewart Junge, fivo founder.

The company's work features clean lines and geometric forms characteristic of Bauhaus design principles.

Learn more at fivodesign.com. **W**

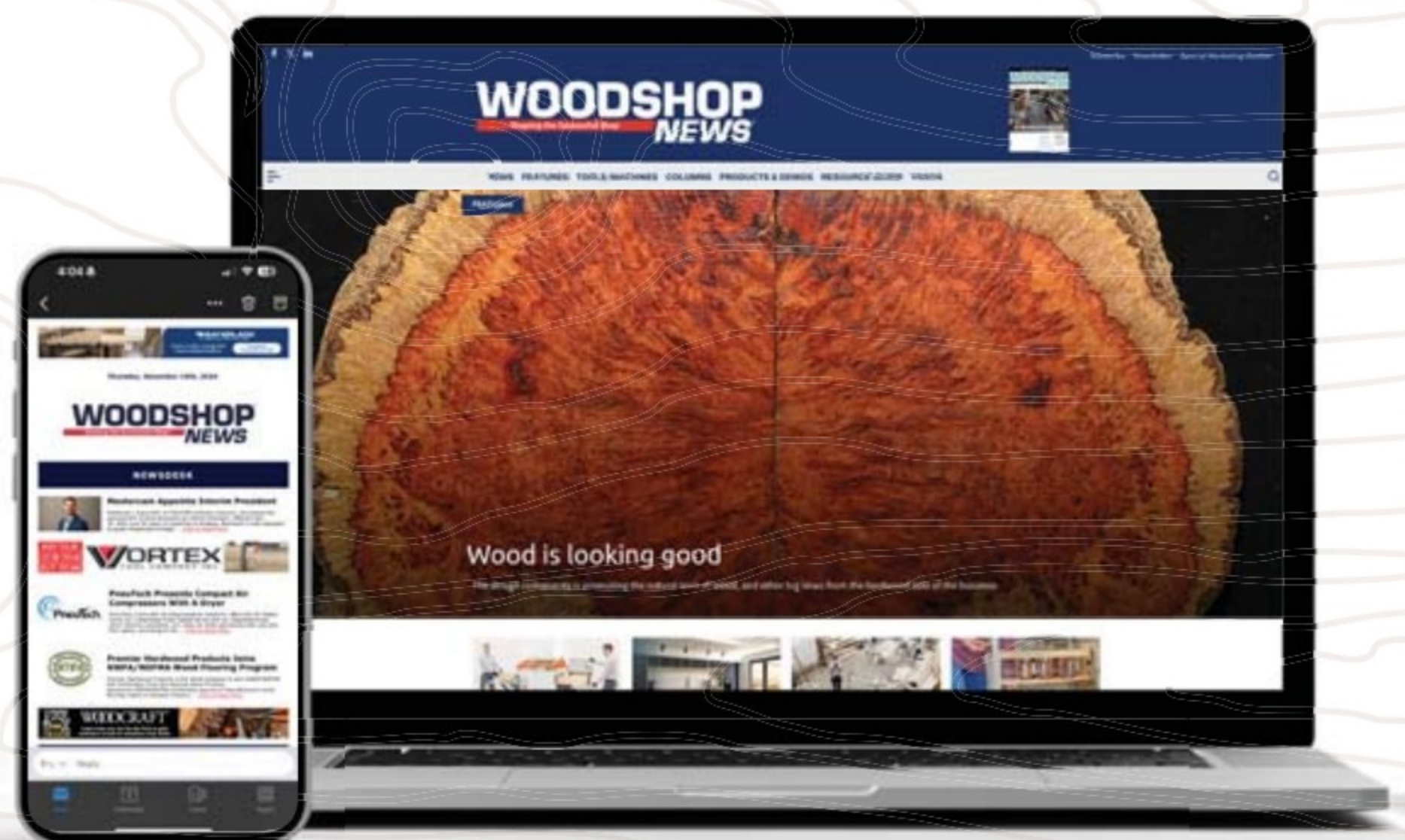
WOODSHOP NEWS



STAY UP TO DATE:

Subscribe for Expert Advice Relevant for Small to Mid-Sized Professional Woodshops.

- Be the first to know about the latest news, business trends, advice, and new products for professional woodworkers.
- Exclusive Offers and Discounts
- Free & Easy to Join



Love what you're reading?
Sign up now for our Woodshop News e-newsletter.
It's quick, simple, and completely free!
Just scan or click on the QR code to get started.



Organizations sponsoring meetings, classes or shows of interest to professional or hobbyist woodworkers are invited to submit items to editorial@woodshopnews.com.

Include name, dates, location, description of event and a contact address or telephone number. Calendar items, which should be typed or printed clearly, must be received at least 60 days before the event.

Please note that fees, as listed, might not include materials or shop fees. Check with a specific class for further details.
— Compiled by Jennifer Hicks

ARIZONA

April 29 - May 1 — Wood Industry Conference hosted by the Wood Industry Association. Connect with woodworking machinery importers, manufacturers, distributors and suppliers, attend keynotes with business solutions and strategies, and more. Location: Fairmont Scottsdale Princess. woodindustry.org

CALIFORNIA

Monthly — San Fernando Valley Woodworkers meetings are held on the third Thursday of each month at 7 p.m. at the Balboa Sports Center in Encino. sfvw.org

Monthly — Society of Wood Manufacturing, a chapter of AWFS consisting of educators, manufacturers, hardware and industrial suppliers, and machinery dealers, meets during the second week of each month. For location and dates, visit awfs.org.

Monthly — San Joaquin Fine Woodworkers Association meetings are open to all experience levels at members' shops. For locations and dates, visit sjfwa.com.

COLORADO

March 17-19 — International Wood Products Association World of Wood Convention. Join importers, U.S. manufacturers, exporters, wholesalers, offshore suppliers and service providers for market insights. Location: The Broadmoor in Colorado Springs. iwpaewood.org

FLORIDA

Ongoing — The Dunedin Fine Art Center is offering six-week woodturning classes at its Cottage Campus taught by AAW professional member Tony Marsh for beginners and intermediate-level participants. Full-day classes are held on Thursdays. Call 727-298-3322 or e-mail education@dfac.org.

Monthly — Woodcrafters Club of Tampa meets every third Thursday evening at 3809 W. Broad St. in Tampa. tampawoodcrafters.org

Feb. 17-19 — Design & Construction Week. An industry event, co-hosted by the Kitchen & Bath Industry Show and the International Builders' Show, featuring the latest products, trends and networking opportunities for residential construction and design professionals. Location: Orange County Convention Center in Orlando. designandconstructionweek.com

GEORGIA

Aug. 25-28 — International Woodworking Fair, the largest showcase of machinery, materials, supplies and services in North America for woodworking and related industries. Show features include hundreds of exhibitors, an extensive education curriculum taught by industry experts, live product demonstrations on the show floor, the Design Emphasis student competition, and networking opportunities. Location: Georgia World Congress Center in Atlanta. iwfatlanta.com

IDAHO

March 21-22 — Idaho Artistry in Wood Show. Annual event



Serving Small Custom Cabinet Makers Since 1982

1-800-237-1326

WalzCraft.com

Custom Doors, Drawer Boxes & Cabinet Components

featuring wood artists from the region and beyond. Location: JUMP in Boise. idahoartistryinwood.org

MAINE

Ongoing — The Center for Furniture Craftsmanship offers year-round classes in woodworking to the highest degree of craftsmanship. One- and two-week workshops from June through October; 12-week Furniture Intensives; a nine-month Comprehensive; eight-week Turning Intensives, and Fellowships. woodscool.org

MARYLAND

Monthly — The Howard County Woodworkers Guild meets the first Saturdays of the month at the Bain Senior Center at 5470 Ruth Keeton Way in Columbia from 9 a.m. to 12 p.m. Contact: Manny Flecker at aaron0641@hotmail.com.
Feb. 18-19 — American Craft Made Baltimore, hosted by the American Craft Council. Largest juried craft show in the region with nearly 400 artists presenting their work. Location: Baltimore Convention Center. craftcouncil.org

MICHIGAN

Feb. 14-15 — Farmhouse Table with Peter Densmore and Michael O'Connor. Location: Sam Beauford Woodworking Institute in Adrian. Fee: \$850. sbwi.edu

March 2-6 — Veneer Mastery with Scott Grove. Learn the fundamentals of working with veneer, including selecting, cutting, seaming, matching, pressing, inlay and more. Location: Sam Beauford Woodworking Institute in Adrian. Fee: \$1,275. sbwi.edu

March 23-29 — Windsor Continuous Arm Chair with Luke Barnett. Students will start with logs on Monday and finish with a continuous arm chair on Saturday. Location: Sam Beauford Woodworking Institute in Adrian. Fee: \$1,450. sbwi.edu

MINNESOTA

Monthly — The Minnesota Woodworkers Guild meets on the second Tuesday of each month at various locations. mnwwg.org

Monthly — The Minnesota Woodturners Association meets on the first Saturday of each month (except July) in Plymouth. They also offer a wide range of classes for beginners and advanced turners. mnwoodturners.com

MISSOURI

April 28 - May 2 — Stairbuilders and Manufacturers Association' annual conference, featuring seminars, networking opportunities and more. Location: Marriot Country Club Plaza in Kansas City. stairways.org

FEBRUARY 2026

50

WOODSHOPNEWS

Compressed Air Filtration

Remove moisture and contaminants from compressed air lines to protect tools and improve finished products



Common Uses:

- Finishing Booths
- CNC Machines
- Edgers
- Sanders
- Routers

Features:

- Remove liquids & contaminants down to .01 micron
- Activated Carbon to absorb oil mists & vapors
- Automatic Float Drain Standard
- Mounting hardware included



800-348-2463
www.laman.com

A Chatterator™ Stand Alone Inline Profile Sander will make you fall in LOVE with Sanding!

- The Inline profile sander is ideal for the woodworking professional who wants increased efficiency and output
- Dual sanding hubs offer maximum flexibility – mix and match sandpaper grits to meet your unique sanding requirements
- The Chatterator™ is proudly manufactured in the USA

6" Inline*



12" Inline*



* Machines ship with top and side covers

Your hands will thank you!



Bill Grom, Owner and Inventor
 970-872-2322 | www.profilesander.com | bgrom38@gmail.com

NEW JERSEY

Monthly — The North Jersey Woodworkers Association meets the third Monday of every month. njwawoodworkers.org

Monthly — The Professional Woodworkers Guild of Upper New Jersey meets the third Wednesday of every month. njwoodguild.com

NEW YORK

Monthly — The Woodworkers of Central New York holds meetings on the first Thursday of each month at 6:30 p.m. at the Belgium Cold Springs Fire Department in Baldwinsville. woodcny.org

Monthly — Northeast Woodworkers Association holds meetings on the second Thursday of the month at various locations in the Albany area. woodworker.org

Monthly — The Long Island Woodworkers meet on the first Wednesday of each month at 7 p.m. at the Frank Brush Barn of the Smithtown Historical Society in Smithtown. liwoodworkers.org

May 17 - 19 — International Contemporary Furniture Fair. Over 450 established and emerging design brands from more than 35 countries will present a broad range of furnishing products for residential, contract and hospitality environments. Location: Javits Center in New York City. Learn more at icff.com.

NORTH CAROLINA

Monthly — Triangle Woodworkers Association meetings are held on the third Tuesday of each month at 7 p.m. at Klingspor's Woodworking Shop. Location: MacGregor Village in Cary. trianglewoodworkers.com

Monthly — Charlotte Woodworkers Association meets the third Tuesday of each month, except December, at 6:15 p.m. Location: 8801 Park Road in Charlotte. charlottewoodworkers.org

Feb. 20-22 — 39th National Arts & Crafts Conference and Shows featuring exhibitions, demonstrations, networking opportunities, and more. Location: Grove Park Inn in Asheville. arts-craftsconference.com

April 25-29 — Spring High Point Market, a wholesale home furnishings trade show. highpointmarket.org

OHIO

Ongoing — Cincinnati Woodworking Club meets the second Saturday in the months of Jan., March, May, Sept. and Nov. from 8:30 a.m. to 12:30 p.m. at the E.B. Mueller in Reading. cincinnatiwoodworkingclub.org

PENNSYLVANIA

Monthly — Lehigh Valley Woodworkers Guild meets at 6:30 p.m. every third Tuesday of the month at the



Wooden Tambour

Top 4 profiles
now available
in **93"**
length!



12 Patterns Available!



(800) 849-8876 • www.osbornewood.com



Dovetail Drawer Boxes

- Custom Designs for Unique Applications
- Numerous Roll Out Applications
- Pantry Storage
- Base/Vanity Storage
- Drawer in Drawer
- Online Order System
- KCD users, send door report to AWD

Custom Cabinet Doors | Floating Shelves | RTA Cabinets

479-968-5486
order@arkansaswooddoors.com
www.arkansaswooddoors.com

Woodcraft in Allentown. Various craftspeople provide presentations on their woodworking techniques. lvwwg.com

PUERTO RICO

May 5-7 — Woodwork Industry Conference, hosted by the Wood Industry Association. Connect with fellow woodworking machinery importers, manufacturers, distributors and suppliers. Hear informative keynotes, take part in networking opportunities, and more. Location: El Conquistador Resort in Fajardo. woodindustry.org

SOUTH DAKOTA

Monthly — The South Dakota Woodworkers Guild meets the last Thursday of every month, except August, at various members' shops. The club has hand tool and woodturning groups. Learn more at sdwoodworker.org. **W**

DURA SUPREME CABINETRY CELEBRATES ITS 33RD ANNUAL KIDS SWITCH DAY

Dura Supreme Cabinetry recently celebrated its 33rd annual Kids' Switch Day. What started as a Cub Scout project in the early 1990s, in November of 1992, is now a highly anticipated company event every year. Each year, fifth graders who are children or grandchildren of a Dura Supreme employee are invited to participate in the event.

"The day is full of fun, educational games, a tour of the Dura Supreme factory, where participants learn what their parents and grandparents do each day," the company explained. "They discuss what it means to be a good employee, learn about manufacturing and cabinet making, enjoy movie time, and more. Next, the students dive into a hands-on activity, where each child gets to build their own cabinet to take home as a keepsake to remember their day at Dura Supreme."

"The kids appeared to thoroughly enjoy the day while learning about Dura

Supreme and getting to see where their parents and grandparents work. It was evident that many of the children had a sense of pride that their parent or grandparent worked here. This is a great event supporting community outreach, and it represents the overall culture at Dura Supreme," said Karen Wistrom, vice president of Marketing for Dura Supreme Cabinetry.

EVENT TO EXPLORE THE MAGIC BEHIND THE MILLWORK

Registration has opened for the 2026 INNERGY Summit & Microvellum Tech-Con, scheduled for Feb. 8-11, 2026, at the Marriott in Anaheim, Calif.

Event highlights include three days of software workshops and education sessions, a plant tour of the Taber Co., and Microvellum TechCon sessions for CAD/CAM users.

Learn more and register at events.innenergy.com.

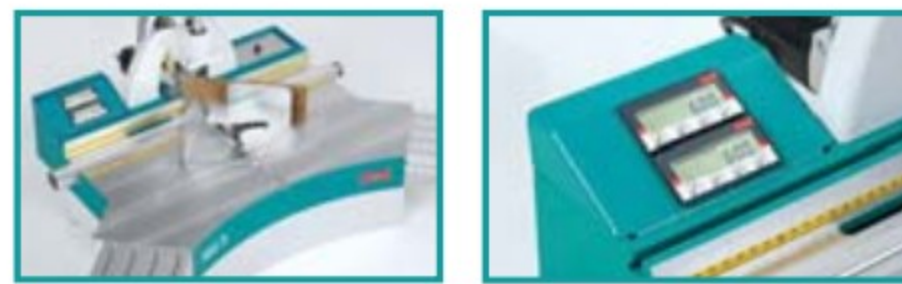
FEBRUARY 2026

52

WOODSHOPNEWS

**JOIN WOOD AT ANY ANGLE
NO CLAMPS, NO NAILS, NO STAPLES**

- Bench-top routing machines with manual or pneumatic operation for any size shop
- Equipped with larger motors and greater machining capacities vs. previous models
- Available with digital displays for keyway locations and routing heights
- View videos and technical specs. online at www.hoffmann-usa.com



MU-3PD Bench-top Routing Machine

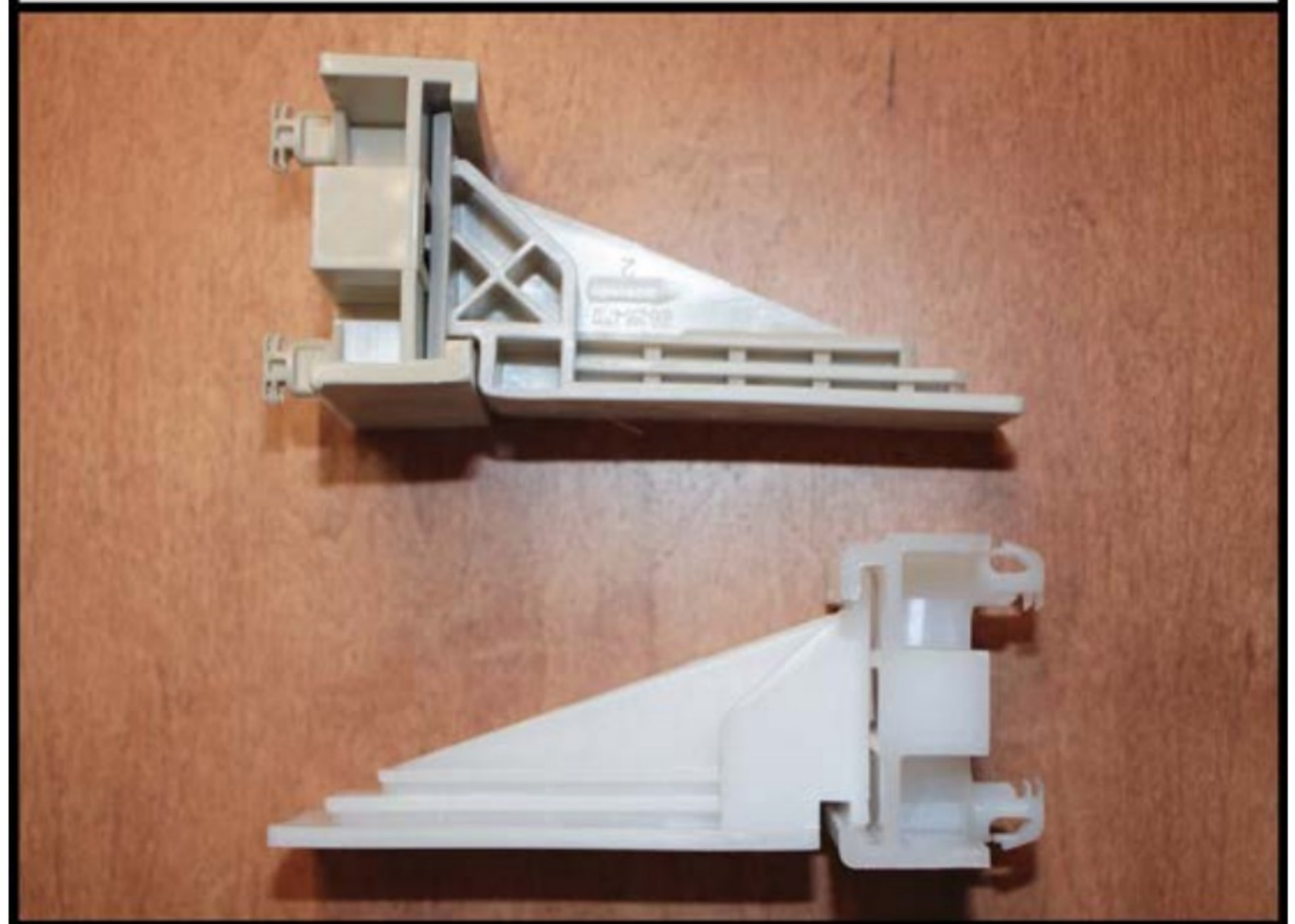


Hoffmann-USA.com
Toll-free: (866) 248 - 0100



Bainbridge Manufacturing, Inc.
Plastic Hardware Specialists
Cabinet Master® Plastic Hardware

Drawer Slide Sockets



Please visit our website www.bainbridgemfg.com




Call 1-800-255-4702
Or
[email sales@bainbridgemfg.com](mailto:sales@bainbridgemfg.com)

CLASSIFIED MARKETPLACE


E-Mail marketplace@woodshopnews.com for Advertising Information

Clamp Hold

PROFESSIONAL EDGE CLAMP



PANEL CARRIER **HOFFMANN**



Hoffmann-USA.com Toll-free: (866) 248-0100

Doors Drawers

Custom **Components** to Complete **Cabinetry**



Elias Woodwork

1-800-665-0623
www.eliaswoodwork.com

Fasteners

MONARCH METAL FABRICATION

Easy Wall Panel System

Simple, decorative aluminum trim



(631) 750-3000
monarchmetal.com

THE ULTIMATE VACUUM-POWERED, ROTATING & FINISHING STAND!



SNX

www.snstechnologies.com
(320) 380-3800

"Your Single Source Provider"



Doors, Drawers & More

- No Quantity Limits
- Over 70 Different Grades/Wood Species
- Design Flexibility
- Custom Sizes
- Finished or Unfinished
- Timely Delivery

Walz Craft

WalzCraft.com 800-237-1326

Hardwoods

RARE WOODS USA

www.rarewoodsusa.com • (207) 364-1520

120 species of exotic & domestic woods
Ebony, Olive, Rosewood, Satinwood, etc.
\$3 million inventory – buy 1 plank or 1000!

STEVE WALL LUMBER CO.
Quality Hardwoods and Woodworking Machinery
For The Craftsman and Educational Institutions.


The trusted supplier from the Heart of North Carolina Furniture County.

- HARDWOODS • EXOTICS • THIN CRAFTWOOD • AROMATIC CEDAR
- HARDWOOD PLYWOOD • CUSTOM PANEL DOORS • HARDWOOD FLOORING

See Our Catalog on the WEB: walllumber.com

BOX 287 • MAYODAN, N.C. 27027
336-427-0637 • 1-800-633-4062
Email: wood@walllumber.com
SEND \$1.00 FOR CATALOG

Place your ad here!



CALL 203-952-6790

WOODSHOP NEWS

PLACE YOUR AD HERE! CALL 203-952-6790

WOODSHOP NEWS

Advertise Here!

Call 203-952-6790 or email: rbeglin@aimmedia.com

CLASSIFIED MARKETPLACE

E-Mail marketplace@woodshopnews.com for Advertising Information

Lumber



KILN DRIED HARDWOODS: Domestic, Imported, Figured & Quartersawn
PLYWOOD: Domestic, Imported, Cabinet & Marine Grade



LL JOHNSON LUMBER MFG CO & JOHNSON'S WORKBENCH

theworkbench.com | 800-292-5937

Scraping & Sanding

THE HANDY HEAVY-DUTY EDGE BAND TRIMMING TOOL



SNX
 www.snstechnologies.com
 (320) 380-3800

Veneer

SUPERIOR VENEER Artisan Thick

1/16" Artisan Thick domestic & exotic veneers

4 x 8 & 4 x 10
 5 x 8 & 5 x 10

Available as:
 Face
 Paperbacked
 MDF, Particle Board, Veneer Core substrates



www.superiorveneer.com
 ph:855.940.7827 fax:812.941.8780
 1819 Dewey St. New Albany, IN 47150

The classifieds have what you need.
 Call: 203-952-6790

Moisture Meters

Moisture Meters
 multiple use
 in-kiln and everywhere else



Call
800-227-2105
 www.Lignomat.com

Services

CNC ROUTER BIT SHARPENING

Spiral & Compression Router Bits
 Sharpened to Factory Specifications,
 using 5 Axis CNC Grinder

DISCOUNTED PRICING
 ON CNC TOOLING FROM:



100% Satisfaction
 Guaranteed

FAST TURN-AROUND &
 FREE SHIPPING ONE WAY!

CONNECTICUT SAW & TOOL

800.404.1220

140 Avon Street • Stratford, CT 06615
 info@ctsaw.com • www.CTSAW.com

PLACE YOUR AD HERE!
CALL 203-952-6790

WOODSHOP NEWS

Advertise Here!

Call 203-952-6790 or
 email: rbeglin@aimmedia.com

**Place
 your
 AD
 here!**

CALL

203-952-6790

Place your ad

TODAY!

CALL: 203-952-6790



THE LOG & TIMBER HOME SHOW

Find everything you need to build your dream wood home — all under one roof!



Meet with the industry's foremost log and timber home producers. See first-hand how various building systems are constructed.



BECOME A KNOW-IT-ALL!

Attend our **Log & Timber University** for detailed, step-by-step instructions on budgeting, planning and building your dream home.

The course is \$95 per person or \$129 per couple (plus \$30 for each additional attendee with the group). This fee covers the Course Guide, a comprehensive textbook to guide you through the entire homebuilding process; a notepad and assorted log & timber magazines; continental breakfast or snacks; plus FREE Lifetime Alumni Pass to the Log & Timber Home Shows.

presented by

LOG HOME LIVING

Timber Home Living

Cabin LIFE .com

Visit www.LogHome.com/shows to find a show near you!

FEBRUARY 2026

ADVERTISING INDEX

Amana Tool.....	www.amanatool.com	C4	Lignomat USA, LTD.....	www.lignomat.com	12
Anderson America Corp.	www.andersonamerica.com	C2	Macoser, Inc	www.macoserwood.com	17
Arkansas Wood Doors	www.ArkansasWoodDoors.com	51	MARTIN Woodworking Machines	www.martin-usa.com	4
Bainbridge Manufacturing.....	www.BainbridgeMfg.com	52	New England Drawer.....	www.newenglanddrawer.com	33
Blum Inc.....	www.blum.com	7	Oneida Air Systems Inc	www.oneida-air.com	9
Castaly Machine	www.castalymachine.com	21	Osborne Wood Products, Inc	www.osbornewood.com	51
CCF Industries.....	www.ccfdrawers.com	15	Paul Elderman	www.paulandpascale.com	2
Charles GG Schmidt & Co.....	www.cggschmidt.com	43	RazorGage	www.razorgage.com	3
Chatterator.....	www.profilesander.com	50	Resource Guide	http://resourceguide.woodshopnews.com	C3
Connecticut Saw & Tool.....	www.ctsaw.com	5	Rev-a-Shelf.....	www.rev-a-shelf.com	1
Gibbs Group N.A.	www.GibbsGroupNA.com	35	Richelieu.....	www.richelieu.com	27
Grizzly Industrial, Inc	www.grizzly.com	28-29	SandMan Products	www.sandmanproducts.com	41
Hafele America Co.....	www.hafele.com/us	11	Shop Fox	www.shopfox.biz	13
Hoffmann Machine Company	www.hoffmann-usa.com	52	Vexor Custom Woodworking Tools	www.vexorcwt.com	39
KCD Software.....	www.KCDsoftware.com	23	Vista Finishing	www.vistafinishing.com	22
KLINGSPOR Abrasive	www.klingspor.com	19	WalzCraft Industries Inc.....	www.WalzCraft.com	49
La-Man Corp.....	www.laman.com	50			

55

WOODSHOPNEWS

Arkansas nonprofit restores century-old barn

Historic Cane Hill, a nonprofit organization in Cane Hill, Ark., saw significant progress last year on restoring the historic Colburn Barn through a national timber frame workshop. The project brought together the Heartwood School in Alstead, N.H., and the Timber Framers Guild. The organization hopes to complete the building for renewed use later this year.



Restoration of the Colburn Barn began with a week-long course on timber frame construction.

Located in northwest Arkansas, the barn is an approximately 100-year-old structure measuring 36 by 60 feet. It features a sandstone foundation and oak timber framing joined with mortise-and-tenon joints using wooden pegs. Historic Cane Hill acquired the property two years ago but needed skilled craftsmen to restore the structure.

"This was on the property of a private landowner just south of Cane Hill, a tiny suburb with many 100-plus-year-old structures. Our nonprofit has preserved and maintained more than 15 structures that are on the National Register of Historic Places," says Amanda Cothren, programs and events coordinator at Historic Cane Hill.

"We were aware of this building, and when the opportunity came to purchase this property, one of the main attractions was an approximately 100-year-old timber frame structure that we know at some point in its history was



used for apple storage. It needed quite a bit of repair, and the beam structure needed quite a bit of work."

Jackson Wells, historic sites manager for the organization, contacted Rudy Christian of Christian & Son, a timber structure consultant and restoration specialist based in Burbank, Ohio. Christian is a founding member and past president of the Timber Framers Guild.

Christian connected the group with the Heartwood School, which led to a barn restoration workshop May 29 through June 4 that drew participants from across the country. The workshop, held in collaboration with the National Center for Preservation Technology and Training, taught attendees timber frame repair techniques.

"Rudy and the Heartwood School put together the seven-day workshop over the summer. They got a lot of work done, but there still is quite a bit of work left to do. We have contracted with another individual, and we're hoping to get the framing portion of the structure completed under their watch. We will still need to reroof it and will go from there," says Wells.

Wells and Cothren say the next step is having the timber frame contractor continue where the workshop ended, with completion expected by summer or fall.

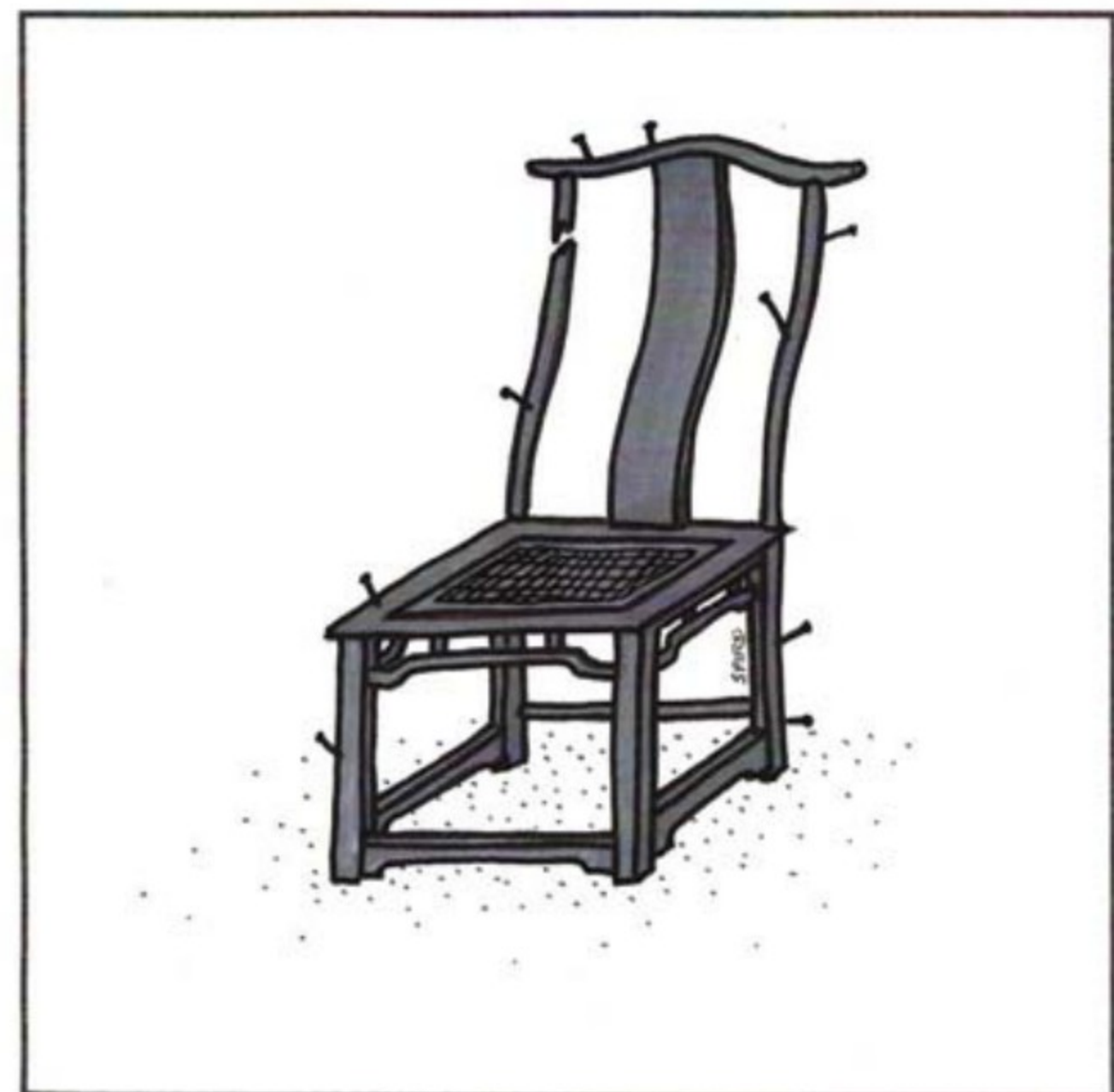
"The intended use has not been set in stone yet. One of the options being tossed around is an events facility for a gathering space. We would be open to other options, but now the most pressing need as a nonprofit organization is an accessible space where a large group could gather," says Cothren.

Learn more at historiccanehill.org. **W**

—Jennifer Hicks

60 Grit

Rough humor by Steve Spiro



FURNITURE REPAIR IN ANCIENT CHINA.

Your online solution to finding the products you need

Over 300 companies listed, covering well over 250 products and services categories.
If you are looking for it, we can help you find it.

Link through your website www.WoodshopNews.com or go direct
Resourceguide.WoodshopNews.com



Resource Guide Showcase Sponsors



A fast and easy research tool to help you determine which companies can supply the products and services you are looking for.



2026 Resource Guide

For marketing information,
sales@woodshopnews.com*

THE ONE & ONLY!

MADE IN USA

EXTREME PERFORMANCE CNC BITS



The original colorful extreme coated Industrial Spektra™ router bits feature a micro-thin nACo ceramic coating that enables the tool's cutting edge to retain crucial sharpness and lubricity.



**HARDER
CARBIDE**

UP TO
2.5X
LONGER LIFE



INDUSTRIAL SAW BLADES DESIGNED TO OUTPERFORM!

Large, European Micrograin Carbide Tips

German Steel Saw Bodies Hand Hammered to Ensure Minimum Runout

Improved Laser Slot Geometry Reduces Noise & Vibrations for a Smoother Operation



Amana Tool®