

WOODSHOP

SHAPING THE SUCCESSFUL SHOP™

www.woodshopnews.com

SEPTEMBER 2025

NEWS®

In good hands

With new owners joining the founder, Custom Creations begins its next chapter

Software for identifying and solving bottlenecks

Hardware: New lights, pulls, slides and lifts

How technology is changing CAD/CAM software

NEW TOOLS

- Felder Finebrush 953
- Grizzly automatic edge bander
- Northtech Universal Telescopic Feeder
- C.R. Onsrud A-Series CNC

\$3.95 (Canada, \$5.95)



EXCELLENT ACCURACY & RELIABILITY

*Quality machines with
proven performance.*



grizzly.com/shopfox



Available at these fine retailers:

grizzly.com

JB TOOLS


ACME TOOLS

THE TOOL NUT

& MORE!
See website for details



Looking for new inspiration for extraordinary furniture design?



Discover entirely new possibilities with the innovative **FurnSpin** fitting – for rotating solutions that impress in kitchens, bathrooms, and living spaces alike. Maximum functionality meets elegant design: **FurnSpin** transforms furniture into dynamic highlights – surprising, intuitive, and space-saving.
DISCOVER THE FULL POTENTIAL NOW.



OVERBUILT, NOT OVERPRICED

ANDERSON EXXACT DUO TC2+D2 TWIN TABLE CNC ROUTER
COMPLETE PACKAGE DELIVERED & INSTALLED



Anderson Exxact Duo TC2+D2 Twin Table CNC Package

- FANUC OiMF Controller System with AGMVP PC Front Interface & Handheld
- FANUC Electronics, Drives, and Servos with 2-year warranty
- DUAL 18HP 4-Pole Air Cooled Router Spindles with Aggregate Capability
- DUAL 10 Position Ride-Along Aggregate Ready Tool Changers
- DUAL 9 spindle multi-drill blocks with DUAL X+Y swivel-able sawing heads
- TWIN 5' X 6' TABLES can be locked together for 5' X 12' or Pendulum Process
- 20 HSK-63F Tool Holders, 20 Chuck Nuts, 40 Collets
- Automatic Tool Length Measuring Device works for both spindles
- 2 - 9HP Becker Vacuum Pumps with Duplex Vertical Rack
- Vacuum Grid Table - Ready for Pods, Clamps, or Spoil Boards
- 22 Pop-up Positioning Pins w/3 Datum Points per table (11 pins per table)
- Tool Change Look Ahead allows tool changes to be performed while multi-drilling
- Lifetime Technical Phone Support & Online Remote Diagnostics
- Includes Freight, Installation, Training, Travel, and Lodging
- **Achieve 100% Spindle uptime of TWO Routing Spindles with only ONE operator**

ANDERSON AMERICA
Anderson Group



TC2+D2

Two Anderson air-cooled HSK 63F Spindles with 10 pos. tool change carousel
Two Boring units with 9 vert.drills, Grooving saw + hor. drills unit as option.

Visit our Showroom

10620 Southern Loop Blvd.
Pineville, NC 28134

P: 704.522.1823

E: sales@andersonamerica.com
www.AndersonAmerica.com

Table of Contents

Jennifer Hicks (top, cover)



30

Features

- 14 WIZARDRY IN THE WOODSHOP:**
How technology is changing CAD/CAM software.
- 30 IN GOOD HANDS:**
With new owners joining the founder, Custom Creations begins its next chapter.
- 34 BYPASSING BOTTLENECKS:**
How software such as ERP can help.
- 39 TURNING BOXES INTO CUSTOM CABINETS:**
The latest lights, pulls, slides and lifts for next-level cabinetry.

News Desk

- 8 Nine exhibitors win AWFS Visionary Awards.**
- 10 Fresh Wood winners celebrated at AWFS.**
- 12 WOOD MARKETS:**
Sellers report slower white oak sales.

Woodshop News, (ISSN 0894-5403, U.S.P.S. 000-966), Vol. XXXIX, NO. 10, is published monthly by Active Interest Media, Holdco, Inc. The known office of publication is 2143 Grand Ave., Des Moines, IA 50312. Periodicals postage paid at 2143 Grand Ave., Des Moines, IA 50318-9652, and additional mailing offices. \$21.95 for one year; \$35.95 for two years (Canadian subscribers add \$12 per year for postage; U.S. funds, foreign subscribers add \$14 per year for postage; U.S. funds). Postmaster: Send address changes to WOODSHOP NEWS, PO Box 37274, Boone, IA 50037-0274. Printed in the U.S.A. POSTMASTER: Send all UAA to CFS. (See DMM 507.1.5.2); NON-POSTAL AND MILITARY FACILITIES: Woodshop News, Circulation Department, PO Box 37217, Boone, IA 50037.

OUTFIT YOUR CABINET SHOP WITH TOOLS & SUPPLIES — DIRECT FROM KLINGSPOR!

When you're building high-quality custom cabinetry, having a single, reliable source for your tools and materials isn't just convenient — it saves you time, money, and hassle.

Klingspor Abrasives offers an extensive selection of top-tier abrasives, blades, bits, and more — everything you need for nearly every stage of cabinet construction and finishing:

- Saw Blades for table saws, sliding table saws, miter saws, jigsaws, and reciprocating saws
- Router Bits for CNC machines, handheld routers, router tables, and laminate trimmers
- Sanding Belts for wide-belt sanders, edge sanders, and portable belt sanders
- Sanding Discs in aluminum oxide, silicon carbide, alumina-zirconia, and ceramic — available from 24 to 2000 grit with paper, cloth, or film backing
- Hand Sanding Sheets for fine-tuning details
- Foam-Backed Sanding Sponges & Pads for contours and curves
- Mesh-Backed Abrasives (Klingnet) for superior dust extraction & long life
- Attachment Options including Kling-On® (hook & loop), PSA (pressure-sensitive adhesive), and plain backings for clamp-in systems
- High-Speed Steel Countersink Bits ideal for precision cabinetry work

And that's just the beginning. Whether you're just setting up shop or restocking for production, Klingspor has the quality supplies cabinetmakers rely on — all in one place.



"Call today to speak with one of our technical advisors about your sanding project."

— Nick, Technical Advisor



KLINGSPOR

The Most Sanding Power for Your Money Since 1893!

800-645-5555 • www.klingspor.com

MARTIN

Woodworking Machines



Quality
Made in
Germany

T45 T54

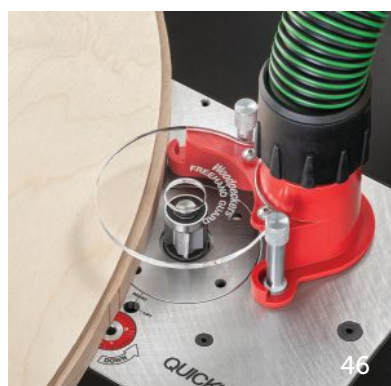
The T45 planer features a user-friendly control system for 99 planing dimensions, while the T54 offers a sturdy frame and optional quieter Xplane cutter block, both with robust cast iron tables and optional extended support for larger workpieces.

Discover our range
of machines and Accessoires
for your workshop.



www.martin-usa.com

info@martin-usa.com, 8715 Sidney Circle, Suite 100 Charlotte, NC 2829, 704-921-0360



Tools & Techniques

- 20 Grizzly's new automatic edge bander offers pre-milling.
- 21 C.R. Onsrud unveils A-Series at AWFS.
- 22 Felder debuts the compact Finebrush 953.
- 23 Northtech presents the Universal Telescopic Feeder.

Departments

- 6 Taking Stock
- 24 Finishing
- 48 New Products
- 50 At the Galleries
- 51 Calendar
- 53 Marketplace
- 55 Advertiser Index
- 56 Out of the Woodwork

Visit us online at www.woodshopnews.com

BLOGS



Over the Workbench

Talkin' shop with former editor A.J. Hamler

2025 Online Resource Guide
<http://resourceguide.woodshopnews.com>

- **Contact Customer Service**
www.woodshopnews.com/subscribe
- **Tools & Machinery**
www.woodshopnews.com/tools-machines
- **Contact the Staff**
www.woodshopnews.com/contact-us
- **Advertising Information**
www.woodshopnews.com/advertise



Smarter Cabinetmaking STARTS HERE

Affordable. Powerful. Proven.

Get the accuracy and efficiency of high-end software without the high-end price. Cabinet Pro delivers the tools your shop needs to grow - without the complexity.



3D Renderings & Shop Drawings

Cutlists, Panel Optimization & Bidding reports

Grain Matching & CNC Code Generation

Personalized U.S.-Based Support

Your shop. Your workflow. Your software.



(702) 370-3611



admin@cabinetpro.com



www.cabinetpro.com



CMA re-elects three board members

By Tod Riggio

Hans Parker of Board Foot Co. (Kalamazoo, Mich.), Randy Niewind of Randy's Cabinets & Woodworks (Grand Rapids, Minn.), and Jason Norvell of Norvell Inc. (Slidell, La.) were re-elected by the Cabinet Makers Association's (CMA) general membership to serve a three-year term on the board of directors, effective July 1, 2025.

Niewind was also appointed President. Other officers for the 2025-2026 term are Vice President Amy Thrasher of Price, D & H Cabinets (Lindale, Texas); Treasurer Terry Steffey of Dibbleville Woodworks (Fenton, Mich.), and Secretary Norvell.

"The CMA appreciates the continued commitment of these leaders and looks forward to another productive year under their guidance," the CMA said in a statement. "Their collective experience, insight, and passion for the craft industry are invaluable assets to the organization and its members."

Rev-A-Shelf has acquired all rights to the InnovaShelf floating shelf and cabinet bracket systems.

"This strategic acquisition follows the formal partnership between Rev-A-Shelf and InnovaShelf," the company said in a July 8 statement. "Starting August 1st, 2025, as part of this agreement, all orders and distribution of InnovaShelf branded products will now be handled exclusively through Rev-A-Shelf."

"This acquisition reinforces our commitment to expanding thoughtfully engineered solutions for both homeowners and industry professionals," said Steve Jones Jr.,

general manager of Rev-A-Shelf. "The InnovaShelf bracket systems is a natural complement to our Omega National Products by Rev-A-Shelf line of wood floating shelves, and we are excited to fully integrate it into our offering."

Hettich America has closed on its acquisition of fellow hardware giant, FGV America.

"The merger represents a key milestone in both companies' shared strategy to strengthen market presence and exposure across the competitive North America market," Hettich said in a statement. "With aligned values, long-term vision, and deep industry expertise, the merger brings together two family-owned businesses with over 200 years of combined experience, signifying a profound and future-focused partnership built on mutual respect and a shared commitment to advancing the furniture fittings industry."

"Hettich and FGV are the perfect match in the functional hardware industry," added Matthias Bertl, CEO of Hettich America. "With this new partnership, clients of both brands will benefit from our different value propositions and efficiencies in our operations, ensuring reliability in the current volatile market."

Bertl was recently appointed CEO of Hettich America.

"In his new role, he will be based at Hettich America's headquarters in Buford, Georgia, where he will oversee the company's U.S. operations with a focus on expanding brand visibility, growing market share, and driving innovation in the North American market," the company said. **W**

EDITOR TOD RIGGIO
ART DIRECTOR CHRIS CIRILLI
STAFF WRITER JENNIFER HICKS
CONTRIBUTING WRITERS

JOHN ENGLISH, DAVID GETTS AND TED BRUNING

SALES & MARKETING

PUBLISHER
RORY BEGLIN
 203-952-6790; rory@woodshopnews.com

CLASSIFIED MARKETPLACE ADVERTISING
 203-952-6790
 marketplace@woodshopnews.com



SENIOR VICE PRESIDENT, CONTENT ROB YAGID
GROUP ADVERTISING DIRECTOR, WOODWORKING ALEX ROBERTSON
DIRECTOR, MARKETING OPERATIONS & AUTOMATION MATTHEW BOYLES
ADVERTISING SALES COORDINATOR JULIE DILLON
CIRCULATION, FULFILLMENT MANAGER JAMES JACKSON
DIGITAL INFORMATION & MARKETING TECHNOLOGY MANAGER DORIAN HENAO



CHAIRMAN & CEO ANDREW W. CLURMAN
CHAIRMAN EMERITUS EFREM ZIMBALIST III
CHIEF OPERATING OFFICER BRIAN VANHEUVERSWEYN
CHIEF FINANCIAL OFFICER ADAM SMITH
SENIOR VICE PRESIDENT, MARKETING ERICA MOYNIHAN
VICE PRESIDENT, MARKETING AMANDA PHILLIPS
VICE PRESIDENT, CIRCULATION PAIGE NORDMEYER
SENIOR VICE PRESIDENT, SALES MIKE BURNS
VICE PRESIDENT, SALES OPERATIONS CHRISTINE NILSEN
VICE PRESIDENT, DIGITAL PRODUCT DEVELOPMENT ASHLEY MACDONALD
VICE PRESIDENT, STRATEGY & RESEARCH KRISTINA SWINDELL
DIRECTOR, HUMAN RESOURCES SCOTT ROEDER
DIRECTOR, PRODUCTION PHIL GRAHAM
DIRECTOR, RETAIL SALES SUSAN A. ROSE
DIRECTOR, INFORMATION TECHNOLOGY ANDREW SHATTUCK

HEADQUARTERS:

Active Interest Media 2143 Grand Ave. Des Moines, IA 50312
 Editorial E-mail: editorial@woodshopnews.com
 Advertising E-mail: sales@woodshopnews.com
 Website: www.woodshopnews.com
 Advertising Billing Questions: (661) 965-9925

SUBSCRIPTION SERVICES:

For questions, problems, or changes to your Woodshop News subscription,
 Online: www.woodshopnews.com/customerservice
 Call: 800-243-9177

EMAIL: subscriptions@aimmedia.com
 write: Woodshop News, PO Box 433212, Palm Coast, FL 32143-3212
 Canada Post Return Address undeliverable to:
 APC-PLI, P.O. Box 503, RPO West Beaver Creek,
 Richmond Hill, ON L4B 4R6.
 Canada Post Publication Mail Agreement No 40624074.



OVERWHELMED

by all the different dust collection systems and setups?

No matter how big or small your shop is, our team of systems experts is here for YOU!



**Free
Consultation**

Not sure where to start?

Contact us today for your **FREE** dust collector consultation. We'll walk you through the process of selecting a collector that works for you, reviewing everything from the port sizes on your tools, the layout of your shop, electrical requirements and more.

Talk to our systems experts today.

Visionary Awards presented at AWFS

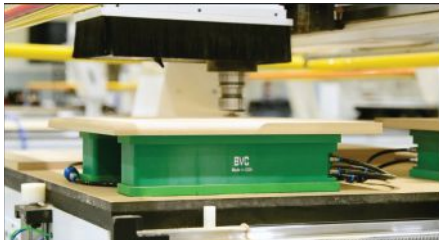
By Jennifer Hicks

Nine exhibitors won Visionary New Product Awards at the 2025 AWFS Fair in Las Vegas. The awards recognize creativity and innovation, and are evaluated on quality, production impact, practicality, innovation, and user-friendliness.

Descriptions of the winning products, based on interviews and descriptions provided by the exhibitors, are as follows:

Components

Better Vacuum Cups for the SS Series Vacuum Cup: The double-sided vacuum cups allow shops to maximize the flexibility of their vacuum tables so they can do solid woodworking or edge detail by raising the material off the table on top of an existing spoil board. They work with routers of various sizes. No foam gaskets are needed to use, unless the cup has been damaged. Cups are available in standard heights of 105, 150, and 200 mm. Learn more at greenbvc.com.



Machinery Over \$50,000

Felder Group USA for the Format-4 Tempora F1000 edge bander: A high-capacity automatic edge bander that combines durability, precision and efficiency for maximum performance. It's equipped with a belt feed drive on the upper pressure bar to ensure careful material handling of surface materials and has a redesigned corner rounding unit with CNC-controlled positioning



axes to deliver precise results, minimize maintenance and increase efficiency. Other key features include an 18" 'smartouch' control system, centric edge jointing unit, and top-mounted controlled glue pot with cleaning function. Learn more at felder-group.com.

Machinery Under \$50,000

Shaper Tools for the Shaper BenchPilot: Turns the company's flagship product, the Shaper Origin, into a hands-free CNC machine, capable of vertical or horizontal cutting. Operators can simply remove the Origin from the BenchPilot to go back to portable hand-held CNC machine for making cuts at any scale. Learn more at shapertools.com.



Power Tools

Apollo Sprayers for the AtomiZer Black Edition spray gun: Delivers enhanced true HVLP performance and flawless finishing results with any make turbine or air compressor (3-hp/20-gallon tank or larger). Key features include



improved fan control through the Xpansive Fan Control Ring, all stainless-steel fluid parts, dual air inputs and material inputs, and OS control installed to reduce overspray. Learn more at hvlp.com.

Software (tie)

Advanced Dimensions for the Leica iCON iCS: The Leica iCS series is a



breakthrough in precision layout technology, bringing seamless digital workflows to the woodworking and construction industries. Designed for ease of use, the system enables direct CAD integration, real-time visualization, and unmatched accuracy on the jobsite. By reducing errors, labor costs, and material waste, the iCS revolutionizes how professionals approach measurement and layout. Learn more at advanceddimensions.com.

Hexagon for Field to Machine: An innovative workflow product that combines an all-new Leica measurement device (from Advanced Dimensions) for templating with integration with Alphacam software that allows manufacturers to drastically reduce the time it takes to perform jobsite measurements and put their job into production. Learn more at hexagon.com.

Tooling

Make it Snappy Tools for the iCARB Indexable Carbide Countersink: Features a double-sided replaceable carbide insert that doubles the tool's life while reducing replacement cost and waste. Featuring a durable, precision-machined steel body, they're built for high-performance and long-term value. Learn more at snappytools.com.



(Continued on page 10)

The background of the advertisement is a photograph of a modern kitchen cabinet. A lift-up door is shown in its open position, revealing a light-colored wooden interior. A black Häfele Free Space fitting is mounted on the top edge of the door, holding it open. The fitting is a sleek, angular metal piece. The cabinet's exterior is a light-colored wood with vertical grain. The overall lighting is warm and focused on the mechanism.

HÄFELE

FREE TO MOVE. FREE TO DESIGN. FREE SPACE.

Incorporating the elegance of Häfele's Free Space fittings into your design unlocks new possibilities for your project. Free Space is smooth, silent and compact, offering a very sleek and cleanly-designed fitting for lift-up cabinet doors. Through this intelligent use of space, you gain more design freedom for more application possibilities, and more "wow" factor.

IF YOU HAVE QUESTIONS, WE CAN HELP.

Online & Live Chat: www.hafele.com | Phone: 800.423.3531 | Email: experts@hafele.us

**Maximizing
the value of space.
Together.**

General

ICRO Coatings for isocyanate- and formaldehyde-free 2K acrylic solvent topcoat: Features technology which promotes a healthier environment and well-being for its customers without sacrificing performance. Learn more at icro.it.



PaintLine for the Pro Face Frame & Door Mover: A mobile rack for moving cabinet doors, panels, and face frames around



the production floor while protecting them from damage. Its slotted tray and fiberglass rods simplify loading and secures transport. All material is non-marring and easy to clean. Fully loaded, the PFFDM easily rolls on heavy-duty, 5" casters. Available in an angled model for shops with up/down ramps/inclines. It is highly configurable with optional shelves. Learn more at paintline.com. **W**

MASTERCAM RELEASES MASTERCAM 2026

Mastercam, a provider of CAD/CAM software, announces the release of Mastercam 2026 with several productivity enhancements, advanced machining capabilities, and AI-enabled CAM intelligence.

"Built on extensive customer feedback and industry research, Mastercam 2026 focuses on eliminating bottlenecks in the programming workflow while providing more precise control over complex machining operations," the company said in a statement.

Learn more at mastercam.com.

Fresh Wood winners celebrated at AWFS

By Jennifer Hicks

Eliot Childress, representing the Center for Furniture Craftsmanship in Rockport, Maine, won Best of Show at the 2025 AWFS Fresh Wood student competition.

The biennial competition recognizes top student work from high school through post-secondary level woodworking education programs in the categories of Tables, Seating, Case Goods, Design for Production, and Other. This year's contest included 40 finalist pieces from 16 schools across the country.

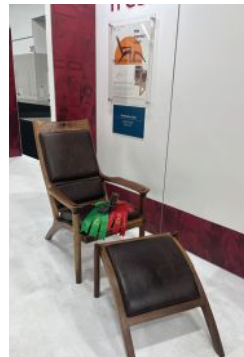


Eliot Childress won Best of Show for "The Next Chapter", a cabinet, inspired by the work of James Krenov.



"My heart is still racing a little bit," Childress, from Davis, Calif., told Woodshop News after the awards ceremony. "I didn't expect it because there's a lot of people in my class who have very awesome pieces here, so I feel very honored to be chosen amongst them."

Childress won for a cabinet, titled "The Next Chapter." He says the idea behind the piece was to encompass a transitional point in his life: when he decided to venture into professional furniture making. The curve on the door, for example, represents him turning a page into a new



"The Mentor's Chair", by Dustin Grant, won the People's Choice Award.

chapter. As for technical inspiration, the idea arose from a request by his father, who wanted a cabinet for his home, inspired by the work of James Krenov, founder of the Fine Furniture Program at the College of the Redwoods.

"My father was a student of James Krenov and he requested a specific cabinet to hold a plane given to him by Krenov. So, I had to really go for it with that cabinet. I wanted a rectilinear cabinet, but I wanted every little thing to be curved," says Childress.

Childress is trying to move to Japan to start a furniture making career. He left Japan to attend the

Center for Furniture Craftsmanship.

Dustin Grant of Utah Valley University won the People's Choice Award for "The Mentor's Chair."

Post-secondary winners also included Wesley Terrell, Center for Furniture Craftsmanship (Tables); Childress (Case Goods, Open), and Matthew McDermott, Center for Furniture Craftsmanship (Seating).

High school winners were Jacob Hamblin, Corner Canyon High School (Tables); Gavin Richards, Fremont Public High School (Case Goods); Ashton Anderson, Mustang High School (Open), and Ky Frederick, Lincoln East High School (Design for Production). **W**



Fresh Wood featured five students from the Center for Furniture Craftsmanship.



ROCKLER®

We build in
our shops,
so we can help
with yours



Rockler.com



Over 40 retail locations



800-279-4441

Sellers report slower white oak sales

By Jennifer Hicks

While still a leading hardwood for cabinetry, trim and other woodworking projects, white oak has become slightly less prominent lately, according to suppliers interviewed by Woodshop News.

Sean Eaton at O'Brien Hardwoods & Specialty Lumber in Portland, Maine, says fluctuation in consumer design trends seems to be the main reason sales are cooling off.

"With white oak, we've been seeing a decline in sales over the last few months. It's kind of leveled off. From about 2015 to 2020, the demand kept growing, and especially the rift sawn. It absolutely exploded. It's still popular, but it has definitely worn out. I'm not sure what's taking its place, but there were times when we had trouble keeping it in stock, and now that's not a problem at all," says Eaton.

Eaton adds that log length and board quality has been a concern, attributed to competition from the whisky barrel industry.

"It's not as common to get longer lengths, and 12' is considered long now. You can still get the 14' and 16', but you've got to really ask for it, and there are a lot of vendors, if not all, that will charge you extra. So, the lengths tend to run a little shorter. I'm going to say 7' to 10' is more average. There's a lot more sap now than there has been over the years, just because of the tree size. There's not as much care put into the drying process, and we do a lot more face checking and end checking.

"The whisky barrel manufacturers are buying a majority of white oak. I've been doing this since '95 and just heard from a vendor that about three years ago whisky barrel manufacturers bought two-thirds of all white oak that was cut in the U.S. And because they don't care about the size,



since they're cutting it into small staves, that opens the tree that can be cut and harvested. So those harvesting it aren't really on the lookout for the big mature trees now. They want to meet that demand and being in this industry we get what's left over. It's driven by whoever will pay the most for it."

Alex Wellsfry of MacDonald and Owen in West Salem, Wis., says demand for white oak is steady, but buyers are shifting away from the lower grades.

"The No. 1 common white oak is definitely softening in the market. The demand is not as much as it used to be. Sales in the FAS uppers are firm, but nothing crazy. There's demand, but not over-demand for it, and customers have a bit more availability in it. But they also are a bit more specific as far as color sorting, grading and clarity," says Wellsfry.

Doug White of Doug White Hardwoods in Marissa, Ill., says white oak continues to be his top seller and he's trying to order more.

"White oak's hot. It's a little scarce and still expensive," says White. "It seems like the more the price goes up, the more people want it. I'm waiting to hear back from a mill where we're trying to get a unit of 10's and 14's. I'm not sure if they have those lengths. We've got a lot of it here. It's just that we've been selling quite a bit of it and want to keep it in stock." **W**

Moisture Meters

Pinless, Pin and Hygrometers

Choose Lignomat for Reliability, Accuracy and Competitive Prices.

Questions about which meter to buy, call and talk to our experts.

800-227-2105
www.Lignomat.com



Pin or Pinless - Your Choice

Pin meters are more versatile. They measure all thicknesses of wood, a wide moisture range from dry to wet and all shapes from flat boards to round shapes.

Pinless meters are very convenient. A lot of boards can be measured in a short time leaving no pin holes, but pinless meters require a flat measuring surface.



Lignomat



Flexible, Scalable, and Ready to Spray: Introducing the Flex Spray Station™

The Flex Spray Station™ from Guffey Systems sets a new standard in convenience and flexibility for your finishing process. Arriving fully assembled on locking casters, this self-contained spray booth can be rolled into place and readied for use in under half a day.

Fully Assembled and Quick Setup

- Arrives ready to roll and can be operational within half a day

Scalable for Growth

- Easily add more mobile rails, hangers, and accessories to expand your system for increased production volumes

Industrial-Grade Construction

- Constructed with durable high-quality steel and aluminum materials

Built for Flexibility

- Its innovative recirculating design means no ductwork is needed for water-based coatings. Solvent-based coatings require venting to the outside, so we offer easy-to-install wall/roof ventilation kits

Learn more



For more information visit
guffeysystems.com/flexsprystation

Or contact us at: (865) 316-9633



Guffey Systems
The Power of Productivity



An AI-generated image of a kitchen design/rendering.

Wizardry in the woodshop

How technology is changing CAD/CAM software

By John English

Over the past few years, advanced visual technologies such as photorealistic rendering, 360-degree viewability, and real time adjustment that instantly show changes have all become mainstream in cabinet showrooms. Customers can see their completed kitchens or baths before a single saw cut is made, and they can virtually twist and turn casework to examine details such as cabinet interiors, LEDs, or drawer dividers. Designers can move walls or windows and design cabinetry in homes or offices

that haven't even been built yet.

So, with all of that magic happening, how could there possibly be anything new?

MYSTERIOUS MANIPULATION

Well, most of what's new is happening behind the scenes.

Design and presentation changes are becoming less obvious even as they become more profound. For example, parametrics are gaining ground in new ways that simplify design and make it far more flexible. A parametric design changes

dimensions and shapes by using algorithms rather than mechanical manipulation. What that means is that artificial intelligence (AI) is now changing parameters within a drawing in a domino effect, and it's doing that wherever a single change affects any other parts. The CAD designer no longer has to make a whole series of manual modifications or corrections.

Up until now parametrics meant that, for example, if a drawer front gets taller, the door above it will be resized automatically. But now the

process is much more agile. If the angle on a raised panel change, the stiles and rails can micro-adjust themselves to accommodate the new profile, or a change in hinges can be automatically passed along to a CNC so that the machining for the recess can be modified instantly and the toolpaths are updated. This concept is called dynamism, or dynamic modeling, and it brings advanced levels of automation to computers and design in much the same way that robots are doing so on the shop floor.

Dynamic modeling depends on algorithms, which are sets of rules or guides that the computer 'learns' and then uses to make decisions without any operator input. What's new is that algorithms can be modified by artificial intelligence and even created by AI. For that to happen, the programmer develops an original algorithm that lets the computer create new sets of rules based on unforeseen actions and consequences. So, if a certain thing happens, the software can now search among a vast range of instructions that have been designed as solutions and apply the most appropriate ones. If, for example, the length of a wall is

a certain dimension, then a change in the width of a cabinet, a spacer, a sink, a piece of hardware, window trim, or dozens of other elements can trigger an algorithm that suggests ways to squish or expand something somewhere that makes the most sense. As the database of possible parts and machining expands over time, the number of correct solutions also expands. AI is being used now to choose among the viable options and present the 'best' solution. But that may not just be driven by function as in the past, but perhaps by appearance, or the immediate availability of hardware or other materials, or even by a combination of these factors.

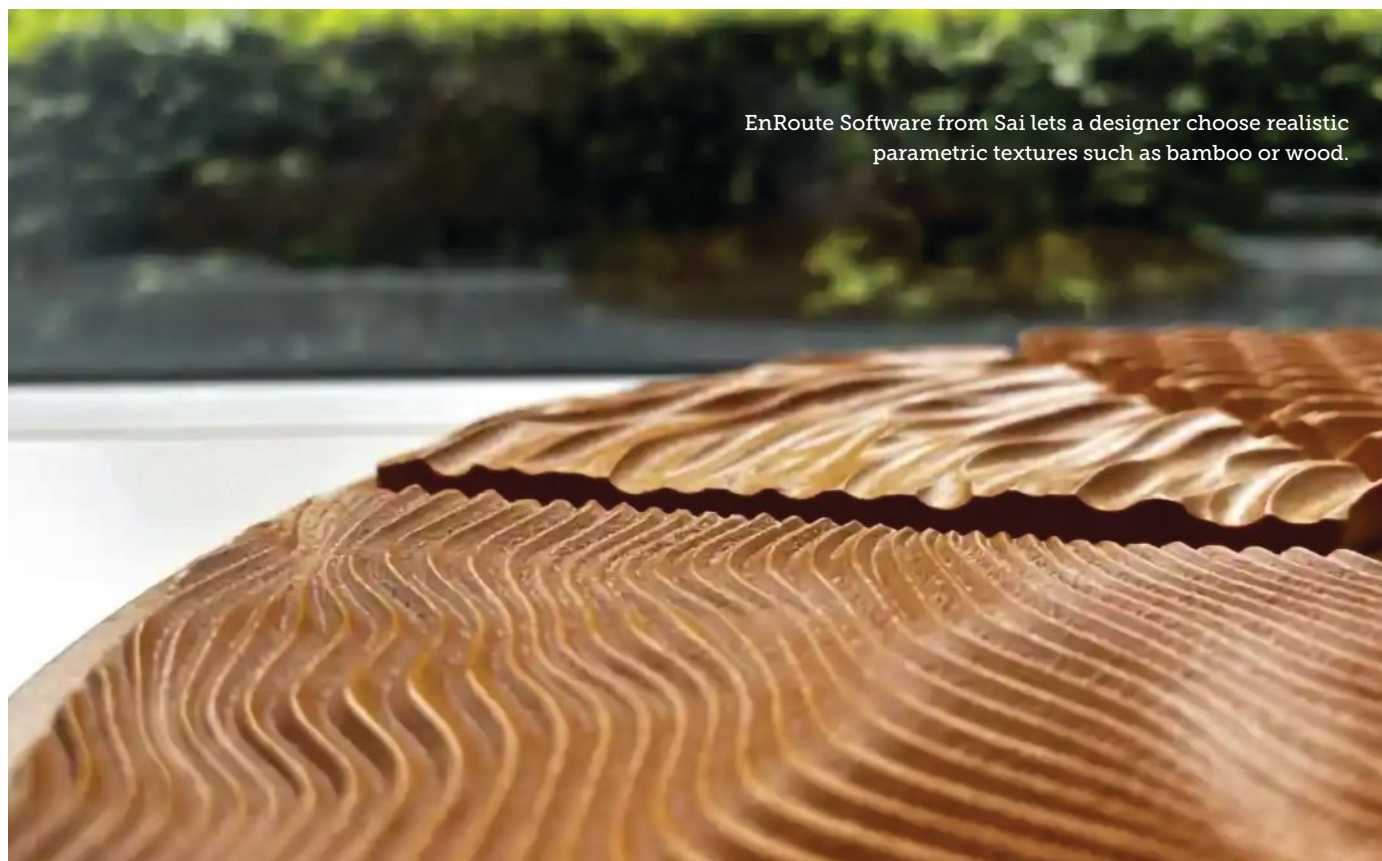
SPELLBINDING SENSES

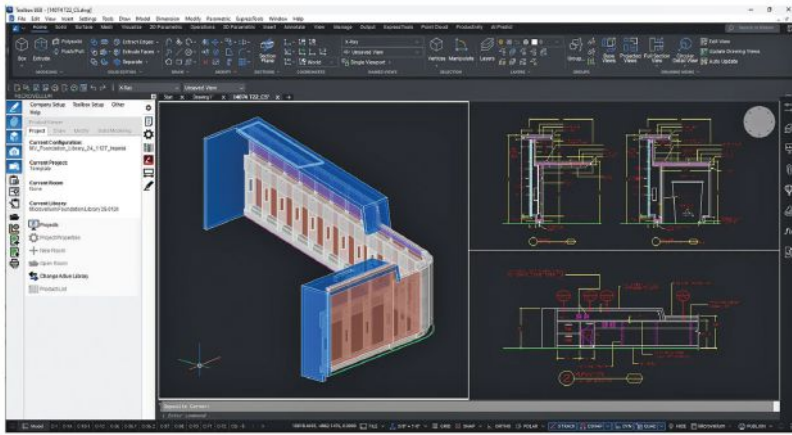
One trend in design that has gained some ground (but perhaps not as much as one might have expected) is virtual reality (VR). The concept of putting on a headset to walk through a completed kitchen is still catching on, but slowly. This type of immersive experience isn't completely comfortable for some clients, which is unfortunate because it's a very valuable tool. It elevates a 3-D model that appears on a 2-D screen

to a tactile, resonant experience that addresses more of the senses, and also allows the programmer to make both structural and decorative changes digitally. That resonance, of course, is the very reason that some people shy away from it: disconnecting from VR is not as simple as just turning one's head from a photorealistic rendering on a computer screen. Virtual reality can involve muscles involuntarily because the brain sees itself inhabiting a physical reality that is at odds with the actual surroundings. We react to objects and spaces that aren't actually there. VR also allows biased voluntary reactions, such as reaching for an object on a shelf that doesn't exist. But it's the involuntary muscle movement that seems to intimidate new users.

Augmented reality (AR) is a version of VR that uses the actual room as a base, and then just digitally overlays changes within that environment. So, it alters what's there, rather than completely replacing it in the way that virtual reality does. AR might let a client see what their existing kitchen would look like with new doors or wall paint, while VR can take them to an entirely different room.

EnRoute Software from Sai lets a designer choose realistic parametric textures such as bamboo or wood.





The new Toolbox BSB from Microvellum unites intelligent engineering tools with a professional-grade CAD foundation in BricsCAD.

There's also a trend toward mixed reality (MR), which is a hybrid of virtual and augmented experiences. The University of Queensland defines this as "a view of the real world — physical world — with an overlay of digital elements where physical and digital elements can interact". So, one could change a drawer pull without, well, changing the drawer pull.

Other common terminology in this arena includes non-immersive VR which is just shown on a 2-D screen; semi-immersive VR which is a mix of reality and VR; and the term 'fully immersive VR' which means putting on the hel-

met and controls.

While overexposure to virtual reality gaming has been known to cause headaches, eye strain, motion sickness and nausea (especially among video gamers), the chances of ill effects in a cabinet showroom are remote. Certain medical conditions are also prohibitive in this area including anxiety, stress, and migraines, so cabinet shops might want to develop a liability policy before introducing VR.

AI is also being used now to suggest a new level of subtlety in design that's based on individual client input. This can make the process very customizable and personal, where elements such as color bias or a preference in furniture style or accents can influence everything from LED lighting to molding profiles. For AI to be able to include this level of intuition, the shop needs to first record the customer's preferences by having them make enough broad selections from online catalogs for the program to be able to discern notions and trends.

CHARMING CONNECTIONS

Ever since Covid, cloud-based collaboration has become a growing trend where designers, builders and clients all come together online for design conferences. They use templates and libraries on laptops, tablets or desktop computers to travel through the options. One

Courtesy of Microvellum





XTREME

PERFORMANCE

COMPRESSION SPIRALS



XP Tools Boost Production And Reduce Downtime And Waste

- Engineered For Cutting HPL/Melamine On Particle Board And MDF Core
- 3-5 X More Tool Life Compared To Standard Compression AND Coated Tools
- Precise, Clean Cuts By Design

5605 East Jelinek Avenue • Schofield, WI 54476

1-800-355-7708 • fax 715-355-7353 • WWW.VORTEXTOOL.COM





INSERTS
CUSTOM TOOLING
ACCESSORIES
SHARPENING
ROUTER BITS



The xShaping module in Hexagon's Cabinet Vision can parametrically shape assemblies and parts while creating CAM instructions.

Courtesy of Hexagon

quirk that's emerging is that the participants often prefer to be connected via cellphone to a group chat, rather than using the conferencing software that became so popular during the pandemic. They still use their computers but they're also on a

video chat at the same time.

This separation of audio and visual elements seems to facilitate more input and more independent contributions to the design session. Video-device-plus-phone conferencing lets a woodshop that's working with an

outsourcing supplier provide technical data, while the client presents decorative and aesthetic preferences, and the factory can simultaneously align those technical and decorative parameters with its own competencies. So, the woodworkers assess

PRECISION, POWER, PERFECTION – THE MAKSIWA LINEUP YOU CAN TRUST



PLATINUM AUTOMATIC EDGEBANDER
CBC.PCR - Corner Rounding



SLIDING PANEL SAW
BMD.3200.IR - CNC Rip Fence



AUTOMATIC EDGEBANDER
CBC.TPM - Pre-Milling





Coohom is home design software that offers high-resolution photo-grade rendering, 360 panoramas, top views and video.

the space, the customer chooses colors and shapes, and the factory says what's possible — all in a single conversation.

Such consultations take place in real time where the design software delivers instant updates. So, rather than the traditional approach where the woodworker and client have conversations and the outcome is relayed by the woodworker to the outsourcing designer, everything happens all at once. The process requires a level of trust between the shop and the supplier, and the client needs to be assured that the shop still plays a significant role beyond installation. A custom woodshop isn't just a sales outlet for the factory, and it's up to the woodworker to educate the client about the shop's value.

Cabinet and part libraries have come a long way too, and most are now very customizable. Parts such as hardware items can become seamlessly integrated into a shop's CAD programs and CAM software. That allows woodworkers to add more details to outsourced projects, while retaining design integrity. And hardware libraries have expanded exponentially. For example, one of the most useful advances in design software is the ability to order full drawer systems, rather than just slides. Extruded plastic and metal boxes with concealed slide mechanisms are becoming very popular, and not just in minimalist kitchens. That's due to aesthetics on one level, but the physical quality of the latest drawer systems is also quite impressive.

What it all comes down to is this: design and presentation software is evolving faster than ever, and AI is at its core. What CNCs did for production lines, AI is doing for sales and marketing. Despite a much larger catalog of styles and finishes, purchasing casework for a kitchen, bath, office or retail store is actually getting easier.

Customers understand the metrics of buying from a computer screen, and AI is simplifying that process even as it expands their choices. **W**

Courtesy of Coohom

YOUR NEXT BEST SELLER

MURPHY BEDS WITH CREATE-A-BED



Discover why specialty woodworkers are adding Murphy beds to their best sellers. **Create-A-Bed's unique patent protected Adjustable Mechanism Kit** makes it seamless to customize builds, install in hours, and adjust within seconds. We offer training. So that you can **start now**.

- ✓ Made in the USA
- ✓ Designed for Woodworkers
- ✓ U.S. Patent Protected
- ✓ CNC Compatible
- ✓ Commercial Grade Pistons
- ✓ Kentucky Based Team

Get up to \$100 OFF + a FREE 1:1 Consultation

Email team@createabed.com with passcode
"WOODSHOPNEWS" to learn more.

Create-A-Bed®
MURPHY BED MECHANISMS
Proudly Made in America Since 1985

WPE[®]

Wood Pro Expo

LANCASTER PA.

October 23-24, 2025

The only professional woodworking event in the Mid-Atlantic and Northeast regions.

Spooky Nook Sports Center
Manheim, PA, Lancaster County

Wood Pro Expo Lancaster is the largest, most comprehensive professional woodworking industry event in the region. It's where woodworking businesses go to explore, discover and educate.

- An expo floor filled with leading-edge technology and the latest in materials and supplies for small to large-size shops and manufacturing facilities.
- A strong educational program on best practices for shop production and management.
- Free daily keynotes.
- Machinery demos in the Running Machine Pavilion and Classic Machine Pavilion.

Interested in exhibiting?

To reserve booth space, advertising or sponsorship opportunities, please contact:

Lewis Goldman

lewis@woodproexpo.com | 800-969-2212

Wood Pro Expo Lancaster is produced by **Woodworking Network**



REGISTER NOW!

<http://bit.ly/4eLC9iL>



Hourly tool raffle giveaway.

Complimentary breakfast sandwiches and coffee.

WoodProExpoLancaster.com

Grizzly's new automatic edge bander offers pre-milling

By Jennifer Hicks

Grizzly Industrial presents a new automatic edge bander, model G0985, with a pre-milling function.

Boasting a 10' table, the machine also features a heated fence and trim and buffer units.



"We introduced this to expand on the other two automatic edge banders (models G0774 and G0854) that are smaller and are very successful units for us. This one has all the features and performance you'd expect in a higher-priced edge bander. The pre-milling is probably the biggest upgrade because it makes sure the edge is super smooth," says product manager Pat Raynor.

Raynor adds that the edge bander is ideal for cabinet shops with medium to large production loads, doing commercial paneling, laminate doors, and frameless cabinets.

The pre-milling function features dual diamond cutterheads that prep the panel edge for gluing, while the heated infeed fence prepares it for optimal adhesion. Other key features include the radius scraping unit that removes squeeze out, and the trimming and buffing units to clean up the edges for a polished finish.

The bander also features a PLC system with LED display to let users quickly adjust settings and oversee machine performance with individual controls for each process.

The Grizzly model G0985 sells for \$26,175. Learn more at grizzly.com. **W**

OMEGA RANGE HOODS AVAILABLE IN PROKITCHEN

Rev-A-Shelf announces that the Omega National Products by Rev-A-Shelf catalog is now live in ProKitchen, software for kitchen and bath design.

"Designers and cabinetmakers can now easily incorporate our full line of wood range hoods and floating shelves into photorealistic kitchen layouts, making it easier than ever to specify, present, and sell," the company said. "Now you can visualize Omega hoods and shelves in your kitchen layouts with realistic color and detail."

Learn more at rev-a-shelf.com.

Courtesy of Grizzly



PERFORMANCE - RELIABILITY - SERVICE

750CN-C Dovetailer

The Omec 750CN-C features a powerful 4 HP, 18,000 RPM spindle engineered for optimal performance and durability. Its advanced spindle cover enhances workplace safety by minimizing sawdust and noise, ensuring a cleaner and quieter working environment. Additionally, the Omec 750CN-C pre-scores workpieces to achieve precise, high-quality finishes in every production run. Designed for efficiency, the Omec 750CN-C processes single or simultaneous male and female workpieces, achieving output rates of up to 60 drawers per hour. It accommodates drawer widths up to 20.86" and material thicknesses up to 1.18", making it a highly versatile solution for dovetail production.

Choosing Omec means investing in more than just a machine—it's a commitment to long-term reliability and support. We provide comprehensive training, dependable after-sales service, and guaranteed availability of genuine spare parts for up to 10 years after the model is discontinued. The 750CN-C is a strategic investment in precision, efficiency, and lasting performance.



EXCLUSIVE U.S. IMPORTER

MACOSER INC

www.macoser.com - 704-392-0110

C.R. Onsrud unveils A-Series at AWFS

By Jennifer Hicks

C.R. Onsrud introduced the A-Series CNC router for cutting wood, metal, plastic and composites at the 2025 AWFS Fair in Las Vegas, where it demonstrated a melamine cabinet nest for optimal material yield.

Ideal for starter shops and smaller companies who want high-quality performance without the need for elaborate add-ons, the machine performs all the essential CNC functions in a small footprint at a low price-point, the company said.



"Our new machine performs all the essential CNC functions in a small footprint and at an attractive price," Jeff Onsrud, the company's director of sales and business development, said in a statement.

"The A-Series achieves programmable feed rates up to 1,000 inches per minute, providing the end user with production capabilities typically found on more expensive machines. It gets operators up and running quickly, safely, and confidently."

The 3-axis machine is offered with a 4' x 8' or 5' x 12' table and has a FANUC control system with a custom HMI (human machine interface) that essentially gives end-users easy button functionality, the company said.

The A-Series starts under \$90,000. The machine arrives fully assembled with a 'plug and play' design and includes on-site training and machine setup.

Learn more at cronsrud.com. **W**

SLOWER GROWTH PROJECTED FOR REMODELING INTO NEXT YEAR

Annual expenditures for improvements and maintenance to owner-occupied homes are expected to soften in 2026, according to the Leading Indicator of Remodeling Activity (LIRA) from the Remodeling Futures Program at the Joint Center for Housing Studies of Harvard University. The LIRA projects that year-over-year spending for home renovation and repair will increase by just 1.2 percent by the second quarter of 2026.

"Weakness in the current housing market is expected to have a dampening effect on home improvement spending," said Rachel Bogardus Drew, Director of the Remodeling Futures Program at the Center, in a statement. "Slowing construction

starts and remodeling permitting activity, which are key factors in predicting future remodeling expenditures, are also putting downward pressure on home improvement growth."

"It will be important to keep an eye on whether the housing market shows any sign of rebound in the second half of the year, to assess if this slowdown is the beginning of a more significant downturn," added Chris Herbert, Managing Director of the Center. "However, federal cuts to incentives for home energy improvements could spur an increase in remodeling activity in the short term, as homeowners seek to take advantage of programs before they disappear."

I USE A WAGNER
MOISTURE METER BECAUSE:

*I care
about
my work*



80% of all problems in wood projects are caused by moisture content issues. A quick and simple, non-damaging moisture meter reading can save you from angry customer calls, unnecessary repair time, and a bad reputation. Call today and learn why Wagner's industry-leading Orion meters may just be the most important tool for your shop.



(888) 266-8093 | www.shop.wagnermeters.com

Felder debuts the compact Finebrush 953

By Jennifer Hicks

Felder introduced the Finebrush 953 at the 2025 AWFS Fair in July, the latest edition to its Format 4 line of brushing and brush sanding machines. The model features a space-saving design and the ability to process panels, profiles, frames and more.

"We've had many requests for something with a smaller footprint with the same type of capabilities as our larger models in this type of machine. We worked with our suppliers and this 953 is the result of that, so now we're able to offer a smaller machine at a lower price point that's still reducing lots of labor intensive work," says Felder Product Manager Jesse Maynerich.

The Finebrush 953 is distinct from a wide belt sander as it's not removing material. Rather, its functions include rough brushing and intercoat sanding to break edges and



prep pieces for finishing.

"This machine breaks the surface and gives the homogenous cut on the entire part so that when it gets to the finishing process, that spray lays down evenly. One application that comes to mind is running MDF to make Shaker-style doors. This can break the inner

edges of that door panel and outer edges and then it can go straight to paint from there," says Maynerich.

The Finebrush 953 is 5' tall, 5'-1/2" wide and 4' deep, taking up about the same amount of floor space as a cabinet saw. It features three brushing units controllable in counter/clockwise rotation, two longitudinal units, and a disc brushing unit. It has a working width of 950mm, according to the company.

Other features include simple operation thanks to an intuitive control panel, a handwheel to adjust the engagement height, and variable speed control. The machine can also be equipped with roller table extensions on both the infeed and outfeed ends.

The three-phase machine includes a transformer to eliminate voltage conflicts. The Finebrush 943 starts at about \$50,000. Learn more at felder-group.com. **W**

Courtesy of Felder

SEPTEMBER 2025

22

WOODSHOPNEWS

LEVEL UP ANY SURFACE

WITH
NATURE+



TALK TO AN EXPERT
media@richelieu.com
1-800-619-5446

Our Italian-designed Thermo-Structured Surface offers unbeatable durability and versatility while enhancing any style of decor. Resistant to scratching and sun fading, **Nature+** has endless application possibilities and comes in twelve distinguished textures featuring natural wood grains and abstract motifs.



Richelieu
richelieu.com

Northtech presents universal material feeder

By Jennifer Hicks

Northech Machine introduced its new Universal Telescopic Feeder at the 2025 AWFS Fair in Las Vegas, designed to simplify and streamline material feeding across a wide range of woodworking equipment.

"At the heart of its performance is a telescopic frame, allowing a wide range of length processing while maintaining a compact design," the company explained.

"This, paired with the hopper and adjustable side-wall design, allows continuous and smooth feeding of parts, minimizing handling, maximizing throughput, and reducing downtime.

"This all results in greater throughput with faster machine feeds and less operator fatigue."

The accessory requires a mounting plate to be fitted to each



of the machines being fed.

The feeder "is compatible with planers, shapers, molders, double surfacers, straight-line and gang rip saws, band saws, brush sanders, and wide belt sanders.

"Whether you're handling short, long, wide, narrow, thick, or thin stock, this feed system is designed to adjust and perform continuous feeding with precision," the company said.

The feeder is also plug-and-play with single-phase voltage and is adaptable to other major brands of machines, not just Northtech's.

"Often, we are seeing shops want automation, but the flexibility and entry cost prevents a lot of them from making the move. This feeder creates a solution for all that," added Brandon Koetter, president at Northtech Machine.

Northtech's Universal Telescopic Feeder, a finalist for the Visionary New Product Awards at AWFS, starts at \$16,500.

Learn more at northtechmachine.com. **W**

Quality Engineered Custom Cabinetry & Components

- Affordable luxury!
- Wood, Thermofoil and Laminate doors & drawer fronts
- Drawer Boxes, Pullouts & Inserts
- Flat rate shipping on 30 or more 5 piece doors
- Custom AOS (Assemble on Site) Cabinet Boxes
- Thousands of Moldings Profiles
- Refacing Products & Accessories
- Superior finishing with trending colors!



Your Cabinetry Component Supplier!



*Quality Committed, Timely Delivered,
Environmentally Driven*

1-800-665-0623
www.eliaswoodwork.com



Sanding goes smoother with the proper tools

By Diane Shattuck

Choosing the wrong backup pad, sanding block or sander can add time, expense and headaches to our daily tasks. When components are not properly aligned with one another, our results fall short of what we are trying to achieve.

Remember, sanding is an art and a science. Our primary reason for sanding is to create a profile for our coatings to adhere to. The appearance and performance of our coating depends on the success of the adhesion process. But the tools we use play a big factor.

Sanding by hand allows you to feel what you are doing on a more tactile

and emotional level. It is best for soft detail work but be sure to sand in the direction of the grain for an even and scratch-free result. There are better options for large surfaces.

Sanding blocks are made in all shapes and sizes and with different densities. The reason for the selection is that we can choose the proper density that will give us consistent contact with the shape without distorting the profile or character.

Hard sanding blocks are used to level or flatten the surface. If there are any slopes, curves, rounds or profiles, a medium density block is a better choice, as hard blocks can

create flat spots and could remove the definition of the profile. Hard blocks also tend to only have small or lower contact points when the paper is applied.

Medium density blocks will bend slightly and make better contact for general sanding, allowing the sandpaper to make full contact and create an even scratch. Soft sanding blocks allow for softer contact taking the aggressiveness off the cutting stroke, allowing only the mineral to really do the cutting. Many hand blocks are rectangular, but manufacturers now offer backup pads to fit their 5" or 6" discs.

New England
Drawer

3 DAY * Turnaround on beautiful
Dovetail Drawers

- The gold standard of Dovetail Drawers
- Fast turnaround times
- Competitive pricing
- 2 Drawer grades available
- High customer satisfaction
- Undermount slides available
- USA Made
- Ships nation wide

ORDERS & INFORMATION:

603-926-2588 | 866-391-3863
www.newenglanddrawer.com

*Restrictions apply



Made by
cabinetmakers
for cabinetmakers

Sanding with a sander can eliminate long hours of hand sanding but can also introduce new obstacles to master and be aware of. The rotation or stroke moves quickly and can produce a pattern if not managed correctly. Understand how your sander operates and apply the correct pressure, speed and abrasive to get optimum results.

Random orbital sanders are designed to rotate in a random pattern while also moving in an orbital motion. The orbit of the tool — 3/8", 3/16", 5/16", or 3/32" — indicates how aggressive the sander will travel across the workpiece and cut. The sanders are specific to their rotation, so it is important to pay attention to which sander is good for which process. They are available with 3", 5", 6" and 8" discs as electric, cordless or pneumatic models. To properly maintain a pneumatic sander, add one or two drops of air tool oil in the quick disconnect fitting at the end of every

eight-hour day. Then reconnect the airline and press the hand pedal several times to swirl the oil through the tool. Disconnect and set the tool on a flat surface for the night. With electric sanders, blow out any dust collected under the backup pad and around the motor area.

3/8" orbit — For aggressive removal, like stripping off paint or flattening uneven surfaces.

3/16" and 5/16" orbit — Used for general sanding. It can leave swirl marks if moved too quickly across the surface. The sanding pattern should always be north/south and east/west with a 35 to 50 percent overlap.

3/32" orbit — Used for sanding sealers, primers and veneers, or where the need for delicate care is required. This type of sander can give the appearance of sanding slower due to its tighter orbit. But it is likely running at 10,000 to 12,000 rpm like the 3/16" DA.

3"x4" orbital sander — Sands in a

continuous orbit. A great size for detail work, as well as sanding corners, profiles and insets.

Pad savers — Should be used on every sander and backup pad. They offer a better contact experience and will extend the life of backup pads.

Interface pads — Great for roundovers or bullnose without creating flat spots. They are available in different thicknesses to accommodate the curves and pressure points needed.

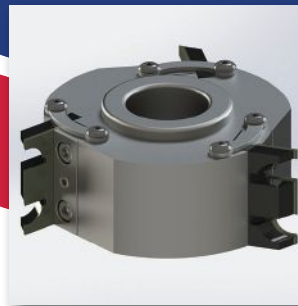
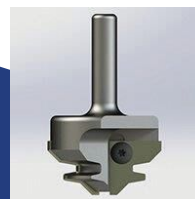
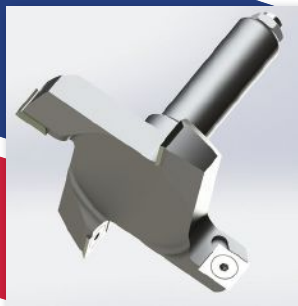
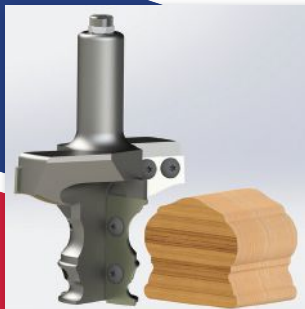
Backup pads vary in their firmness to give the sandpaper different contact and performance traits. There are many manufacturers but be sure to use the size designed for your sander. The weight of the different backup pads is specific to the size of the tool. The wrong size will make the tool unbalanced.

Firm/hard pads — Used to level and flatten solid wood. Not a good choice on plywood or veneer. Since plywood isn't perfectly flat, the hard pad can burn through veneer in high spots.



VEXOR

Custom Woodworking Tools
Denver, CO



Router bits, shaper cutters,
insert tools, profile knives and
more for the woodworking industry.
Family owned and operated for over 40 years

Vexorcwt.com | Toll Free: 877.879.8906

CUSTOM PROFILE KNIVES

for Shapers & Moulders

Corrugated

Lock Edge

Jet/Powermatic

Woodmaster

Williams & Hussey/Shopfox

Steel & Carbide Knives



SUPERIOR QUALITY

26 For over 25 years, Connecticut Saw & Tool has been producing custom profile knives for the most discerning customers. We are experts at manufacturing knives for custom window and door production. All cope and stick knives are test run in house for **guaranteed tight fit & accuracy**. We will make an EXACT match to your wood sample, CAD, or faxed drawings. Our fast delivery, competitive pricing and superior quality all add up to a truly exceptional knife grinding service that is

100% satisfaction guaranteed!

We also offer the BEST tooling with the BEST discounts from top manufacturers - in stock & ready to ship same-day!

Call or email for pricing & up-to-date availability



Call Today! 800.404.1220

140 Avon Street • Stratford, CT 06615
info@ctsaw.com • www.CTSAW.com

FINISHING

Medium density pads — Should be used for most sanding tasks. It makes great contact with the surface, especially when there's a need to sand flat without being aggressive.

Medium density angle pads — Firm yet soft on the outer edges. Great for veneers, profiles or soft edges.

Soft backup pads — Designed to give, relieve or hug the surface. Good for scuffing but not leveling.

Next month we will discuss abrasives. Until then, remember to respect the process because shift happens. **W**

Diane Shattuck is a finisher, consultant, guest speaker, writer and teacher. She can be contacted at dianeshattuck@msn.com. Questions, suggestions and comments are always welcome.

TOTAL FINISHING SOLUTIONS ADDS CERAKURE TO ITS VENDOR NETWORK

Total Finishing Solutions (TFS), a provider of finishing equipment and integrated system solutions, announces a new partnership with Cerakure, a manufacturer of gas and propane-fired catalytic ovens.

Engineered for consistent heat, energy efficiency, and clean combustion, Cerakure ovens offer precise thermal curing ideal for small to mid-sized shops and specialized production lines. This addition allows TFS customers to access a broader range of innovative equipment and supplies, the company said in a statement.

"We are beyond excited to announce that we will be working with Total Finishing Solutions moving forward," added Mike Hernon, owner of Cerakure.

"You'll now find our advanced curing technology alongside their extensive catalog of spray equipment, automation, and consumables."

Learn more at totalfinishingsupplies.com.

MICROVELLUM INTRODUCES TOOLBOX BSB

Total Microvellum presented Toolbox BSB, a new BricsCAD-based version of its design-to-manufacturing platform, at the 2025 AWFS Fair in Las Vegas.

"Toolbox BSB delivers the trusted Microvellum experience, now also running within the BricsCAD environment," the company said in a statement. "It brings together intelligent engineering tools and a professional-grade CAD foundation in a bundled installation that's fast, efficient, and familiar to current users.

"BricsCAD is a professional CAD platform supporting both 2D drafting and 3D modeling using the industry-standard DWG file format. With a familiar command structure, a highly customizable interface, and performance tuned for large-scale drawings, BricsCAD is designed for detail-oriented design and engineering work."

Learn more at microvellum.com.

WOODWORKING IN AMERICA



Des Moines, Iowa • October 10-11, 2025

An exclusive event where passionate woodworkers of every skill level come together led by some of the craft's foremost experts.



woodworkinginamerica.com





Grizzly[®] Industrial

FREE 640-PAGE CATALOG!

The Industry's Leading Sourcebook for Metalworking & Woodworking Machinery
Request yours at www.grizzly.com/forms/catalog-request

10" 3 HP 240V Cabinet Table Saw with 7' Rails

Award-winning saw with massive capacity

- 60" Rip capacity
- Extra-large 74" cast-iron table
- Shop Fox[®] Classic fence
- Locking magnetic switch
- Max. depth of cut @ 90°: 3"
- Footprint: 20½" x 20½"
- Shipping weight: ≈ 558 lbs.



MADE IN AN ISO 9001 FACTORY

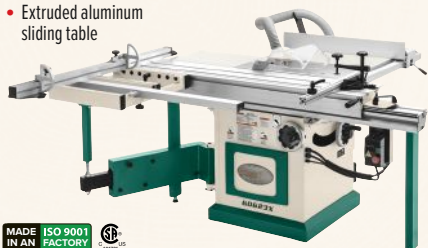
G1023RLX // ONLY \$2889

\$349
FREIGHT
(POWER & INSTALL)

10" 5 HP Sliding Table Saw

Produce accurate, repeatable cuts

- 33" Rip capacity
- Full-sheet cutting capacity
- Scoring blade for tearout-free cuts
- Extruded aluminum sliding table
- Miter fence with two flip stops
- Footprint: 25½" x 28"
- Shipping weight: ≈ 688 lbs.



MADE IN AN ISO 9001 FACTORY

G0623X // ONLY \$4929

\$349
FREIGHT
(POWER & INSTALL)

8" x 83" 3 HP Parallelogram Jointer

Achieve flawless edges for amazing joinery

- 36-Indexable-carbide insert helical cutterhead
- Parallelogram tables
- Digital readout for infeed table height
- Heavy-duty center-mounted fence
- Fence stops at 45°, 90°, and 135°
- Footprint: 46" x 18"
- Shipping weight: ≈ 730 lbs.



MADE IN AN ISO 9001 FACTORY

SB1091 // ONLY \$3459

\$349
FREIGHT
(POWER & INSTALL)

25" 15 HP 3-Phase Planer

Dimension wide stock with immense power

- 174-Indexable-carbide insert helical cutterhead
- Digitally controlled table elevation
- 3-Speed feed rate
- Precision-ground cast-iron table
- Serrated steel infeed roller
- Footprint: 47½" x 22"
- Shipping weight: ≈ 2054 lbs.



MADE IN AN ISO 9001 FACTORY

G0603X // ONLY \$13,645

\$599
FREIGHT
(POWER & INSTALL)

17" 2 HP Bandsaw

Our best-selling 2 HP bandsaw

- Cutting capacity: 16¼" left
- Resaw capacity: 12"
- Blade speeds: 1700, 3500 FPM
- Oversized cast-iron table
- Cast-iron table trunnion
- Footprint: 27" x 18"
- Shipping weight: ≈ 421 lbs.



MADE IN AN ISO 9001 FACTORY

G0513X2 // ONLY \$2095

\$255
FREIGHT
(POWER & INSTALL)

17" Floor Variable-Speed Drill Press

Engineered for accuracy and efficiency

- Adjustable Class II laser guide
- Spindle speed digital readout
- Rack-and-pinion table elevation control
- Built-in LED work light
- Square chuck guard with micro switch
- Footprint: 23" x 16½"
- Shipping weight: ≈ 232 lbs.



MADE IN AN ISO 9001 FACTORY

T33961 // ONLY \$1195

\$199
FREIGHT
(POWER & INSTALL)

6" x 108" Variable-Speed Oscillating Edge Sander

Streamline your shop's sanding workflow

- Variable-speed motor with touch screen controls
- VFD inverter for 3-phase power
- Sanding surfaces tilt vertically and horizontally
- T-slot table and miter gauge
- Quick-release belt lever
- Footprint: 32" x 19½"
- Shipping weight: ≈ 597 lbs.



SB1097 // ONLY \$4149

\$349
FREIGHT
(POWER & INSTALL)

37" 15 HP 3-Phase Wide-Belt Sander

Deliver professional sanding results

- Digital readout and control panel
- Independent motor control
- Pneumatic belt tracking and tensioning
- Amp meter for load measurement
- Safety shut-off bar
- Footprint: 51½" x 19"
- Shipping weight: ≈ 1781 lbs.



MADE IN AN ISO 9001 FACTORY

G0539 // ONLY \$15,225

\$599
FREIGHT
(POWER & INSTALL)

10 HP Industrial Dust Collector

Powerful dust extraction for heavy use

- 2.5-Micron upper bag filtration
- 5360 CFM air suction capacity
- 17" Radial fin impeller
- Heavy-duty steel stand with 3" casters and brakes
- 48 Cubic feet collection capacity
- Footprint: 80" x 80"
- Shipping weight: ≈ 472 lbs.



MADE IN AN ISO 9001 FACTORY

G0673 // ONLY \$2469

\$299
FREIGHT
(POWER & INSTALL)

INTRODUCING

1½ HP Quiet Series® Horizontal Cyclone Dust Collector



Powerful Dust Collection, Designed for Peace and Productivity

The 1½ HP Cyclone Dust Collector delivers powerful performance with a 1-micron filter that captures fine dust for a cleaner, healthier workspace. Operating at just 71 dB, it ensures a peaceful work environment without sacrificing suction.

Its box-style design saves floor space and can support a custom wood top, turning your dust collector into a versatile workstation. Whether you're outfitting a compact shop or upgrading your dust management system, this cyclone delivers the performance and flexibility you need — without the noise or clutter.

Specifications:

- Required power: 110V, single-phase, 15A/7.5A
- Main inlet size: 6"
- Adapter inlet size: 4" (2)
- Filtration: 99.97% @ 1-Micron, two-stage
- Filter type: MERV-16 pleated cartridge
- 735 CFM airflow capacity
- Wireless remote control
- Footprint: 53" x 26"
- Dimensions: 53" W x 27½" D x 40½" H
- Approximate shipping weight: 510 lbs.



See the Grizzly dust collector in action!

60991

**INTRODUCTORY
PRICE**

\$2295



MADE IN AN ISO 9001 FACTORY

grizzly.com®

800-523-4777
#GRIZZLYTOOLS



FINANCING AVAILABLE



Please visit grizzly.com for up-to-date pricing.

Due to rapidly changing market conditions, our advertised prices may be changed at any time without prior notice.

⚠ WARNING! ††: Cancer & Reproductive Harm

Some products we sell can expose you to chemicals known to the State of California to cause cancer and/or birth defects or other reproductive harm. For more information go to www.P65Warnings.ca.gov.



A kitchen (top) and breakroom by Custom Creations, which serves the residential and commercial markets near Nicholasville, Ky.





New owner Brad Blunt (left) with Bill Horine.

IN GOOD HANDS

With new owners joining the founder, Custom Creations begins its next chapter

By Jennifer Hicks

Custom Creations in Nicholasville, Ky., is forging ahead with business as usual under new ownership. The turnkey company, which specializes in commercial casework and residential cabinetry, was founded in 1987 by Bill Horine, who had a vision of building high quality custom cabinets. In 2022, after years of growth and several shop moves, Horine decided to sell. The buyers, Brad and Renae Blunt, share Horine's same enthusiasm for success.

"My wife and I were looking to purchase a business for stability. I worked as a contractor running IT projects for the state, and she was a CPA. She's since retired. We wanted something profitable but also ethically run, and something that we could learn," says Brad Blunt.

"We met Bill through a business broker, looked at the business and the books, and decided that Bill could run the craftsman side of it and I could do the business side. He had a partner prior to this that ran the business side, and that's really what I do is run the administrative aspects of contracts, insurance, working up quotes, etc."

Horine, who joined Blunt for an interview with Woodshop News, has remained with the company doing field work and estimating. The 14,000-sq.-ft. shop is staffed by four full- and one part-time woodworker, and four full-timers in the office, plus Renae.

STARTING IN THE BASEMENT

Horine got hooked on woodworking in junior high school and worked at several shops for about 10 years after high school. His first shop was in his brother's basement, then in a two-car garage, followed by three other industrial spaces after employees joined the picture. His previous shop was about 7,500 sq. ft., big enough for digital fabrication machinery.

"That's where we started growing," says Horine. "In 2006, we added our first CNC in that shop. When I first started, I had a Powermatic table saw, then we got the Altendorf sliding table saw and the MultiCam CNC. The CNC increased production, we needed fewer skilled workers, and it could do mortise-and-tenon joints to make things look nicer and more custom."

At that point, the business was focused on laminate projects for commercial jobs and did occasional residential work. Things were going pretty well until Horine faced a health setback that prompted him to make some changes, namely bringing on business partner and co-owner Neal Durnil.

"I was diagnosed with cancer in 2006 and brought on Neal for multiple reasons. One to grow the business, but also if something happened, I wanted to be able to have somebody continue the company as far as employees and



everything because it's family," says Horine.

Once Horine was well and back to work, he and Durnil continued their partnership. By 2016, they needed more space and purchased their current shop in the Nicholasville Industrial Park. The 2022 sale happened because Durnil wanted to retire and Horine wanted to take a step back.

"I wanted the company to grow, and I felt we took it to the level we could, and that's where Brad's knowledge and experience, as far as large companies go, lends itself to growing this company and creating a business plan," says Horine.

GETTING ACCLIMATED

Blunt, who's from Lexington, says he and his wife were not dissuaded by a lack of woodworking experience. They had plenty of business experience. He'd been a project manager, implementing lean manufacturing concepts at previous jobs, and Renae had her CPA skills.

Blunt's role includes managing the business and integration aspects of the company, just as Durnil did.

"What I've done, because all successful businesses run on a system and have sales processes, is look at writing down our processes, standardizing them, and looking at ways to get organized. The whole idea is to make this more profitable and efficient," says Blunt.

"This was already a well-run business. It was just a matter of codifying what we do. But I also brought in my analytic skills to look at pricing and track down hours on each job to see if we are meeting metrics based on a consistent percentage spent in each area.

"So, if we come up with a job that takes 200 hours in materials and labor after we price it, then we'll say 30 percent should be assembly, 10 percent design, etc. If we go over, I know where the issues are and ideally address them when I see them going higher than expected."

The business continues to focus on the commercial mar-



A hotel bar (top) and cabinetry by Custom Creations.

ket, producing laminate cabinetry and casework, through contractors and their referrals. Residential work is offered on a limited basis.

"Ninety percent of our business is commercial, and we delve more into residential when we're slower. We might do a kitchen or a lobby room when it's not quite as busy, but we do mostly commercial because our shop is set up that way," says Blunt.

The service area is central Kentucky with many projects going into hospitality, healthcare, and educational settings.

"We like to work in healthcare settings because we're familiar with that space. They have different requirements that we're knowledgeable about so we can build cabinets to meet their needs. Each project is different, and we will never have the same project twice," says Blunt.



Finisher Erin Mills (above) and cabinetmaker Casey Boggs (below).

WHAT'S IN THE SHOP

Altendorf F 45 table saw • C.R. Onsrud
4' x 8' CNC • Dantherm dust collector • Holz-
Her Sprint 1417 edge bander • Kreg DK 1100
pocket hole machine • MultiCam 5000 Series
CNC router • Oneida Dust Gorilla Pro dust
collector • Stiles Ironwood jointer • Timesav-
ers Speed Sander wide belt

SEEING RESULTS

Blunt says the company's best year was in 2024.

"We got our pricing right, and we got jobs that fit us and that we can be profitable at. Each woodworking shop has its own niche or area where they can be more profitable than others, so ours happens to be solid surface because it's something we can do very well. We have employees that can make it very efficient and be successful at it.

"Sometimes we get work that requires a lot of craftsmanship and that's helpful because we have some excellent craftsmen," says Blunt. "But we also try to find work that is distinctive enough that others can't do, but we can do it productively and efficiently.

"There are quite a few small woodworking shops that we compete against. We can't be competitive if they can do it cheaper, so the jobs have to be larger in size and of a certain complexity for us to take on."

Blunt is happy with the size of the company.

"There's a concept called the dip, whereas when you grow larger in size, your own personal income goes down. The dip is you add more employees and your expenses go up, but you're not necessarily seeing more profit. You have to push through that and keep growing, so you can be out of the dip where you can handle more capacity to become more profitable."

"I want to avoid that, and frankly, our work is cyclical and I'm trying to take care of everybody here. If we go through a slow period, which is generally January and February, I don't want to ask people to take time off, close up on Fridays or make other adjustments because we don't have work in the queue."

He's aware of the talent he has on staff and knows it would be difficult to find skilled replacements.

"This is a small town and these skills really take years to develop, so my challenge is everyone really is essential at this point. I do what I can to pay people competitively and make it a great working environment that they would want to stay, offering benefits where I can, and bonuses," says Blunt.

Horine is very pleased with the Blunts' progress and confident that they'll help the legacy he built continue. He will stay on as long as he can.

"I just want Brad and Renea to be successful with the business and employees. It's one of those things that it is a business that is very self-satisfying when you take a sheet of wood and you create furniture, cabinets, whatever. There's no amount of money that you can really express what you get out of the beautiful end product. I thoroughly enjoy the business, and as long as my health is there, and I get up every day, I will continue to be a part of it."

Learn more at customcreationsky.com. **W**



Bypassing bottlenecks

How software such as ERP can help

By John English

The word 'finishing' suggests a small step that will complete a project, but in reality it can be the most challenging process in cabinetmaking. This is where shops building solid wood kitchens and baths tackle parts that need to be sanded and coated and sanded and coated and... so on. The repetitive process often leads to bottlenecks and that makes sense: this is the only area where reworking the same pieces occurs on a regular basis, so it takes twice or three times as long for parts to be completed.

There's no way to avoid it, but there are ways to manage it. And that's where software comes in.

Almost every woodshop has a bookkeeping program that tracks and arranges expenditures and receipts. The spreadsheet that this generates is used to present a summary to a tax preparer, but it can also be a doorway to a more efficient management system. All those tiresome entries can paint a

very detailed picture of how the business is currently being run, and they can also be used to make it more profitable. The woodshop management is already tracking most of the information that can be used to ease bottlenecks. Expanding the software can make those numbers sing.

The key here is something called enterprise resource planning, or ERP. Basically, it's a way to track and then project numbers, where history is used to predict and alter the future. ERP software looks at everything from payroll and training to supply chain options and production line performance, and it does so through a financial lens. It can measure anything that happens in the woodshop in terms of its potential — where is there room to become more efficient, streamline workflow, or improve the bottom line?

Where bookkeeping only watches money, ERP also watches time and performance. It introduces new ways to communicate data so that the person designing cabinets, or



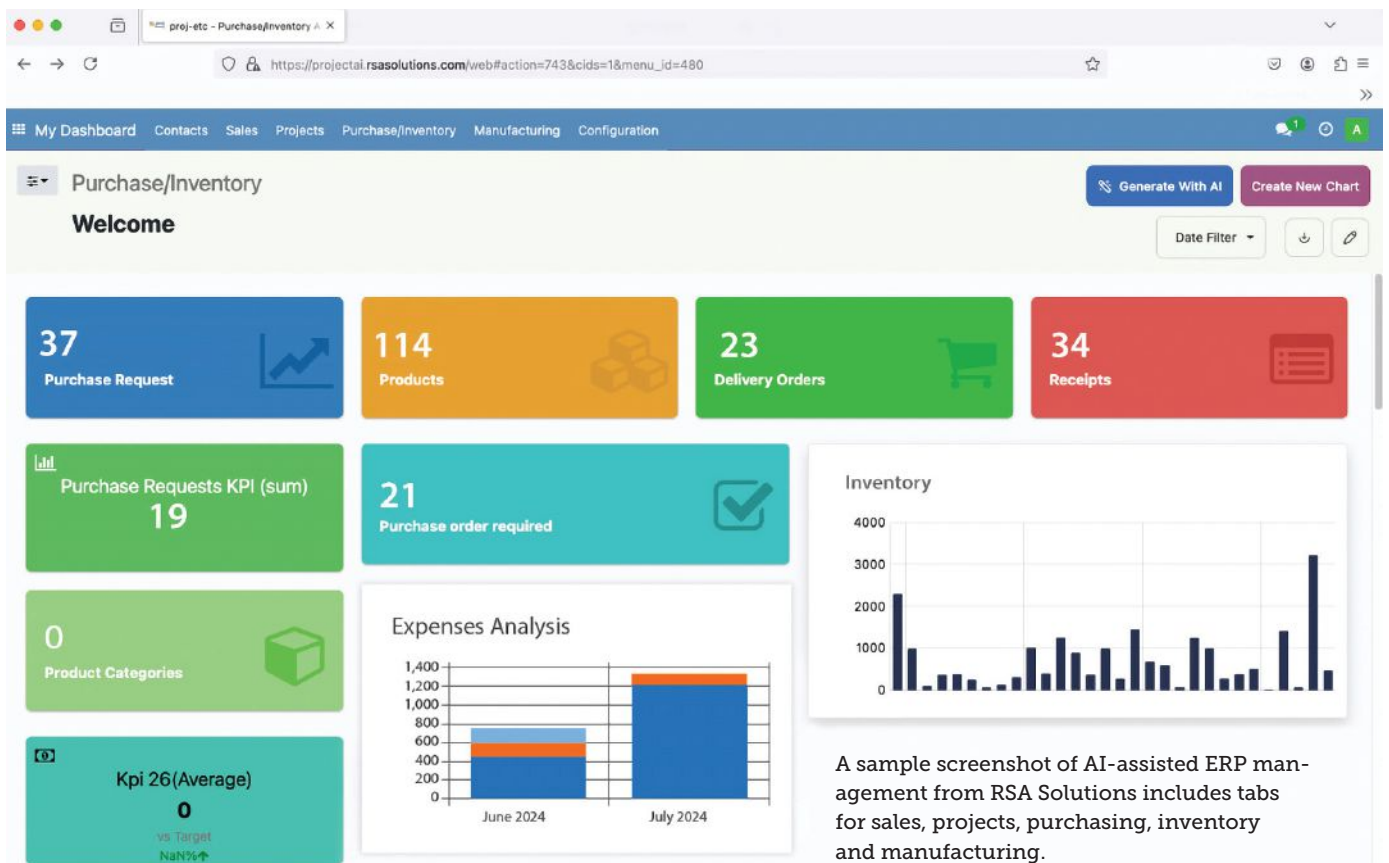
ERP software from Global Shop Solutions helps with labor costs, quality, costing, inventory, sales, pricing, and moving parts through the shop.

buying drawer slides, or loading the CNC all have the same information available, and it lets them learn how to use it as a cohesive team. Any data that can possibly be shared is available in a central resource, so that anyone can access it easily. And as much as possible, the data collection and organization are automated, so when something changes somewhere, it changes everywhere. That automation also extends to tasks, so for example when an inventory runs low, the employee installing cabinet slides doesn't need to stop what he's doing and find a manager to order more. And it streamlines processes, so an employee who is assembling drawers will know exactly when more parts are coming, and the person producing a job can use optimizing to turn scraps into pieces for the next job.

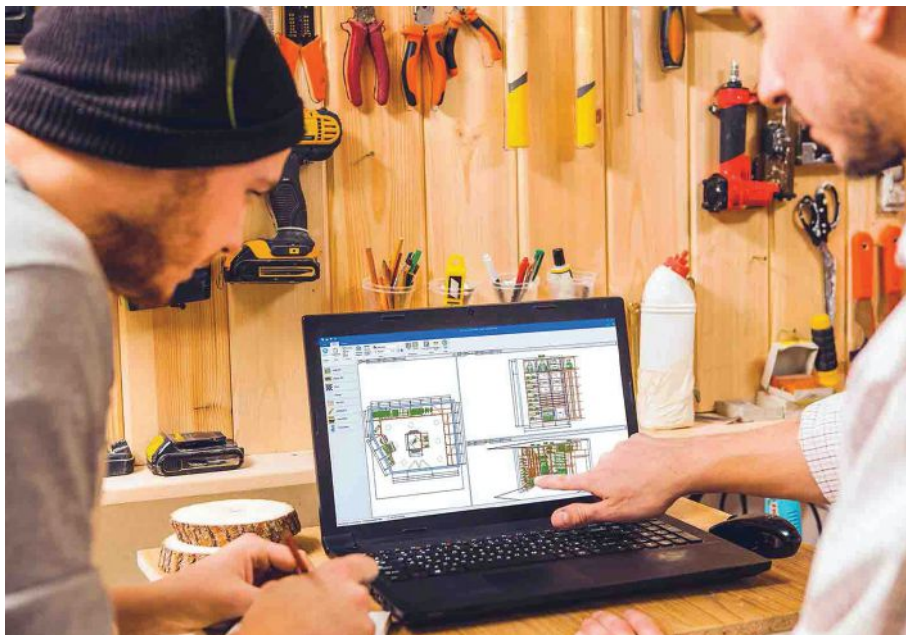
Of course, access to certain sensitive areas such as bank or personnel records can be limited and controlled.

The biggest effect of ERP is that it's instantaneous. The information is available in real time, so nobody must wait until a production meeting at the end of the week to learn that the shop just ran out of Baltic birch sheets or is running low in oak edge banding. And a manager who is at a meeting with a banker, a client or a supplier always has reliable, instantaneous info at his or her fingertips. There's no more "I'll get back to you on that..."

ERP even manages human resources, and tracks everything from attendance to performance and payroll. When a shop owner is considering an investment in a second CNC or perhaps a new robot, there's no need to create a research project to discover viability. The shop's ERP software already knows what the business can produce, what



A sample screenshot of AI-assisted ERP management from RSA Solutions includes tabs for sales, projects, purchasing, inventory and manufacturing.



EcoSys from Hexagon provides resource planning and management for all types of resources including human, equipment, materials and financial.

so that the shop can steer its production goals in that direction.

But where ERP really shines is in manufacturing and project management. The data it presents can help the woodshop manager plan and track projects in minute detail without expending a lot of time, which consequently makes the most of existing resources and also curtails expense excesses. ERP can minimize bottlenecks and waste because it lets a shop owner manage materials and monitor production processes both in real time and in projection models. Most ERP software can also integrate machine performance programs to schedule maintenance and avoid downtime. And if the shop has several employees, ERP can suggest their best and most efficient task assignments, so that everyone isn't building more boxes as the paint booth backs up.

SOFTWARE OPTIONS

Beyond bottlenecks in the production sequence, ERP can address some of the new challenges facing woodshops such as robotics, hacking, and artificial intelligence (AI).

ECi Software (ecisolutions.com) creates software with embedded AI that can improve job tracking efficiency and support sales. The company's JobBOSS2 package manages scheduling including rush orders,

net Vision suite offers seamless CNC integration, task automation, labor and material cost tracking, and smart streamlining of workflows.

KCD Software (kcdsoftware.com) has teamed up with several ERP module suppliers such as Allmoxy and Tractivity to help woodshops become more efficient. **Allmoxy** (allmoxy.com) offers a sales/order taking software system that "can get an order and send it to the shop floor within minutes, with cut-lists and files all ready

to go." And **Tractivity** (tractivity.com) offers functions such as time tracking, HR and payroll prep, cost analysis, materials and inventory purchasing and receiving, production scheduling, workflow management, estimating, and product and component tracking.

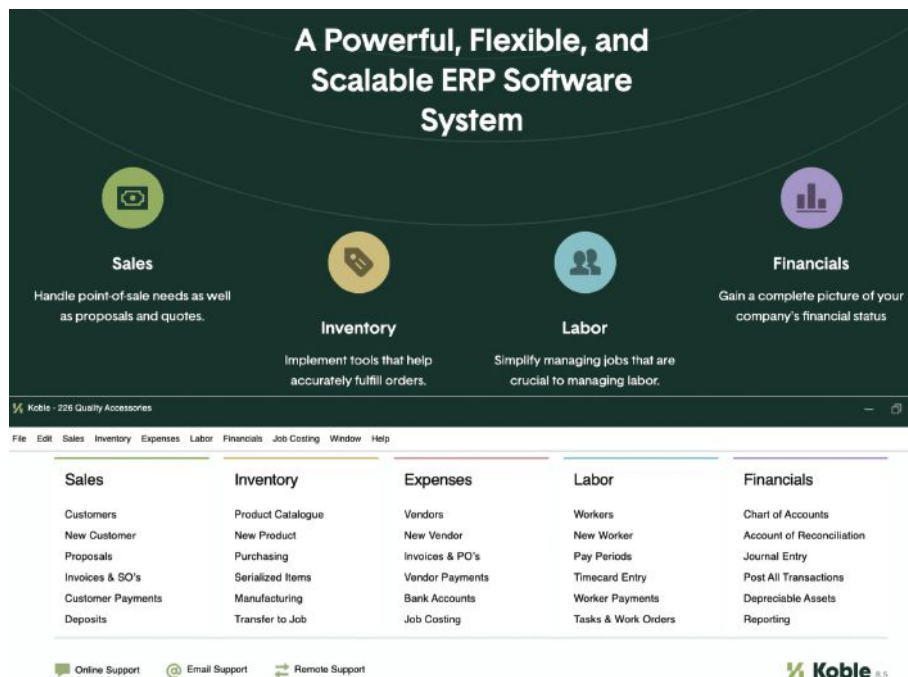
The suite of tools from **Abacus Solutions** (abacusg.com) includes IT service management, cyber security, resourcing and staffing services, help in developing, updating and managing security policies and procedures, program management services for oversight and coordination of complex projects, machine learning, and artificial intelligence.

ERP software from **Global Shop Solutions** (globalshopsolutions.com) has integrated software with "all the modules a manufacturer needs to deliver a quality part on-time every time." They include scheduling, shop floor data collection, and reports on quality, inventory, shipping and purchasing, job costing, AR, AP, payroll, human resources, financial statements, and performance indicators. GSS says that its ERP package will let a woodshop owner know the shop's true capacity, ensure that employees know what to work on next, and avoid inventory problems by using automated purchasing. In all, the company offers more than 35 apps.

Koble Systems (koblesystems.com) offers ERP software to control inventory, sell products, manage



Another benefit of ERP software is more time for the creative side of the business.



Koble Systems has developed ERP software for small businesses to help control inventory, sell products, manage labor and connect financials.

labor and connect financials. The company says its software is "like having an administrative assistant who can be everywhere in your business at once, improving operational efficiency and supporting your goals for growth."

Orderwerks (orderwerks.com) is

another software system built for production shops. This is a B2B (business to business) management suite that creates quotes, tracks and processes inventory, streamlines fulfillment and allows both internal and external user ordering. It seamlessly integrates with tools such as Quick-

Books and Shopify, and produces reports and interactive dashboards that "turn data into decisions".

RSA Solutions (rsasolutions.com) is business software that covers everything from personnel management and materials handling to deadlines and communication. The company's Projectc.ai is a CRM and ERP package that provides customizable dashboards, activity scheduling, and performance analytics. For shops with bottlenecks in production, RSA's Project Management module "offers a comprehensive suite of features designed to streamline project planning, execution, and tracking. It provides tools for task management, where users can create, assign, and prioritize tasks, while also tracking progress through customizable workflows and stages."

Most cabinetmaking software suites offer some elements of ERP. For example, **CabMaster Software** (cabmastersoftware.com) delivers design tools, 3D drawing, nesting solutions, toolpaths and G-code in a single app, and **Crows Nest Software** (crowsnestsoftware.com) includes estimating, communication, inventory management, scheduling, milestone tracking, financials, and reporting. **W**





Shown here is the STAR version of Salice's Exedra pocket door system, which won acclaim at Interzum in May this year.

Turning boxes into custom cabinets

The latest lights, pulls, slides and lifts for next-level cabinetry

By John English

In the August 2012 issue of *Psychology Today*, Dr. Jordan Gaines Lewis wrote that "people dressed conservatively are perceived as self-controlled and reliable, while those wearing more daring clothing are viewed as more attractive and individualistic."

She could have been talking about kitchens!

It's astonishing how well our habitat aligns with our personalities. We decorate rooms in colors, shapes and accents that please us, but those choices also telegraph our disposition and temperament. The funny thing is that most of us absolutely deny the conclusions that such revelations reveal: we rarely think the person looking at our private world really gets us.

So, what can a kitchen say about its owner?

LIGHTING UP THE ROOM

Illumination has entered a new age and how it is being used says a lot.

LEDs were invented almost a century ago (in 1927) by a Russian engineer named Oleg Lesev, but it took until the late 1990s for the bugs to be worked out. Light-emitting diodes finally began showing up on billboards and outdoor advertising about 25 years ago, and by 2010 they had become the primary energy-conscious option for homes, commercial spaces and institutional buildings.

LEDs can be up to 90 percent more efficient than traditional incandescent bulbs, but they have two other attributes that cabinetmakers also admire – they stay cool, and they can be quite flexible. Creating bendable strips of LEDs is possible because each light is a separate unit that is independent of its neighbors except for current. So, wherever a wire can go, light can go. The flowing current causes electrons in a semiconductor microchip to release photons in the form of electro-magnetic radiation that becomes visible light. And their color can be changed by simply altering the amount of energy that's required for the electrons to 'jump' across a gap in the semiconductor. We're all familiar with conductors such as copper wire or steel rods that can carry a current. A semiconductor is just a material that allows us to control

Lamello



How Lamello Improved My Business

"It's a very versatile system. It's easy to use, it's accurate and it allows a lot of flexibility. We can ship things out knock-down with the guarantee that it's going to go back together the same way in the field."

Tony Aubin

Owner | Aubin Woodworking

The P-System



Joinery solutions trusted by woodworkers worldwide.

- Precise
- Efficient
- Swiss-quality



www.csaw.com/lamello

info@csaw.com

888-777-2729

COLONIAL SAW

Lamello USA is a division of Colonial Saw



A two-part hanging system from Stronghold Brackets includes one unit that wraps a stud and another that's attached to the load.

that current.

A good example of how versatile these LEDs have become is the new Neon Flexible Lighting from **Task Lighting & Power** (hardwareresources.com/task-lighting), a brand of Hardware Resources. This is a 24-volt LED that is housed in a bendable silicone housing, so it can deliver seamless, dot-free accent lighting for curved and recessed surfaces. It's available in either Top Bend, which bends up and down for curved surfaces and comes in 120, 225 or 400 lumens per foot (LPF), or Side Bend which delivers 80 LPF. The Top Bend product comes in 16' long rolls and is easy to cut and reconnect. And the Side Bend comes in 3', 10' and 16' lengths. and can be used in surface and recess mount applications.

HIDDI is a new lighting system from **Richelieu Hardware** (richelieu.com) that's recommended for use in cabinets with drawers or vertical opening systems. It's also ideal for pull-out baskets. The device is only 19/32" thick and comes with an infrared sensor that automatically switches it on and off when the door or drawer is opened and closed. It can be installed on the inside wall of the cabinet. Options include neutral white, super warm white and warm white light colors, and it does require a dimmable or non-dimmable 24-volt power supply, which Richelieu also sells.

Hera Lighting (heralighting.com) is riding on the crest of the AI wave with its new Spot-AI. The company's first 'fully intelligent' LED product was introduced last year, and it has four key benefits: AI tunable color, foot traffic monitoring, data analytics, and energy management. The system lets a cabinet shop build casework for lighting installation in a retail space that can be completely managed from a phone. With color variance from 2700k to 6500k, it's an ideal complement to cabinetry in department stores and hotels (where the traffic counts can be very useful), or even in dressing and makeup areas in private homes.

Several additions to the FlexTape SMD line from **Tresco Lighting** (trescolighting.com) offer a wide range of spool lengths up to 20 feet, five light colors choices, and 12 or 24 volt-ages. FlexTape is a high-density LED tape that delivers smooth, even illumination without pixelization. It's available in 2700, 3000, 3500, 5000 and 6500 Kelvin colors, where the lower K values are warmer, more comforting and lean toward yellow, while the higher numbers are whiter and bluish, which is more in line with bright daylight. The latter are usually used in offices and workshops. FlexTape is basically a plug and play system with a wide variety of connectors, which makes it quite flexible for cabinetmakers to hide wiring and follow curves.



Trim Fast is a peel and stick molding kit from Outwater Industries that lets a cabinetmaker add instant architectural details.

WELL HANDLED

H25 is a new 81-piece decorative hardware collection from **Häfele America** (hafele.com), intended to blend with modern, mid-century and industrial styles. A companion line, H23, features a range of handles, knobs and pulls in the latest urban, modern and mid-century styles.

The new Folklore collection from **Berenson** (berensonhardware.com) infuses modern style with a hint of nostalgia. Looking anything but

dated, it manages to invoke a certain feeling of quality that we relate to an earlier time. The Radial Reign line has also been expanded. Each pull has a knurled metallic rod that's held by clean, contemporary posts. Both the rods and posts come in a variety of metallic finishes, which allows a cabinetmaker to add dash, style, strength and grace.

The designers at **Jeffrey Alexander** (hardwareresources.com/decorative-hardware) have been busy this spring. The line has introduced four new decorative hardware collections:

Fontana, Griffin, Ivan, and Jules. The Fontana collection features a square shape with stepped feet and comes in six finishes, a variety of pull sizes, and one coordinating knob. The Griffin collection merges classic architectural elegance with contemporary sensibilities and includes six versatile pull lengths, two appliance handle sizes, and a coordinating knob, all available in six finishes. The Ivan cabinet pull is available in five designer finishes, including satin brass, and is a complement to mid-century modern and Scandinavian designs. It



Finished kitchen shown, designed using KCD Software® and manufactured by cabinotch® with CADCode Systems



The design to manufacture software solution for cabinet and closet professionals

Did you know you can do much more than kitchens and closets with KCD Software? Our powerful and easy to use design to manufacture software solution is also ideal for mudrooms, home offices, garage storage solutions, custom entertainment centers and much more. Let's discuss the solution that's just right for you.

Call 508-568-6271 or Visit KCDSoftware.com

DESIGNER

PROFESSIONAL

WORKSHOP

CNC COMMANDER



comes in an array of cabinet pull lengths and a coordinating knob. And the new Jules collection is a striking blend of architectural refinement and classic allure that comes in a satin bronze finish. There are six standard pull lengths, a coordinating knob, and two appliance handle sizes, all available in five finishes.

Modern Metal Pulls is a series of knobs and pulls from Richelieu that were inspired by specific artists where the lines, shapes and colors communicate values such as contrast, emotion, elegance or balance. This is unique, evocative, inspirational hardware that is available in a range of finishes.

The Craftsman Collection of solid wood utensil drawer inserts is coming soon from **Rev-A-Shelf** (rev-a-shelf.com). It addresses several needs including pullouts with foil

tresco
lighting



A whole new range of FlexTape SMD, an LED tape, has been added to the Tresco catalog in a wide range of colors and lengths.

and wrap holders; organizers for jars and bottles; utensil bins with knife block inserts; hairdryer and makeup holders; trash bins; cutlery and utensil drawer inserts; and even deep drawer organizers for base cabinets. The Craftsman Collection features quality construction details that include solid maple and Blum hardware, but it's the design geometry and luxurious looks that are going to attract the attention of cabinet clients.

Outwater Industries (outwater.com) has introduced a family of products called the Trim Fast Hampton Collection. This is peel and stick polystyrene molding that can be used to create the illusion of panels on a wall or a set of cabinet or passage doors. It's a pre-mitered kit of paintable white molding that can be purchased in various sizes.

Stronghold Brackets (stronghold-brackets.com) has come up with a bracket for woodworkers who need to hang something especially heavy. The SM-4 was actually designed for hunting mounts, but it can handle a wide variety of residential or commercial loads. It's forged from 10-gauge, cold-rolled steel and is rated for more weight than standard house framing. It's powder-coated in black but can be ordered in custom colors.

MAKING MOVES

Late last year, **Grass America** (grassusa.com) introduced a new anti-tipping solution for furniture that helps woodshops comply with the 2023 STURDY Act. The Rear Anti-tip System is a simple concept: only one



MX370P Automatic Edgebander

From cabinet parts to cabinet doors, this edgebander can do it all.

The Cantek MX370P Automatic Edgebander with Premilling and Corner Rounding is designed to be a compact and durable edgebander offered at an affordable price. User-friendly controls and adjustments allow for efficient changeovers of edge tape thicknesses between 0.4mm & 3mm



DURABLE | COMPACT | PRECISE | VERSATILE

Akhurst Machinery Group

cantekamerica.com

drawer can be opened at a time, and the remaining drawers are locked securely in place until the opened drawer is closed. It can be installed during manufacturing, or retroactively. Grass makes its TEC soft-close hinges, Zargen drawer systems, and Epoxy roller slides in the U.S., and the company notes that this means faster response times, reduced shipping costs, and personalized assistance. The hinges have an easy three-way adjustment system, and Grass has developed simple machines to provide rapid assembly solutions for its drawer system.

The past two years have seen some innovative hardware solutions from **Hettich America** (hettich.com). Among them are the slimline Avosys hinge for glass and mirror doors; the robust SAH 500 heavy-duty cabinet suspension bracket; and an upgrade for the AvanTech YOU Illumination design feature that brings changing light colors to both system and standard wooden drawers. But the idea that has caused the most conversation is FurnSpin, a swiveling fitting that caused a stir in 2023. It has since been updated with the new RoomSpin, which can transform an entire room designs at the swipe of a hand. It allows users to effortlessly rearrange room elements in a curated movement that resembles choreography. So, a meeting room can change into a personal space for a video conference or for focused, quiet work, just by spinning casework and walls around.

Drawer slides from **Fulterer USA** (fulterer.com) have a load capacity of up to 441 lbs. and come in slide lengths up to 59". The slides can be color matched with a power coat finish. And the company has developed relationships within its product categories that enhance a woodshop's options. For example, the FR 771A and FR 777A slides can be optionally upgraded with Fulterer's patented Easy Close Device (ECD). Those are progressive action, vertical pull-out slide systems that are ideal for vertical drawers in kitchens,



Neon Flexible Lighting from Task Lighting & Power is used here in Side Bend for curves and Top Bend under the counters.



panels easily snap in / out

SNAP PANEL SYSTEM

BUILD SMARTER. SNAP FASTER. DESIGN BOLDER

Engineered for 3/8" and 3/4" panels, our new Snap Panel System combines sleek design with rapid installation. Featuring our patent-pending MSNAP technology, panels snap securely into place - no lifting, no hassle.

Enjoy quick installs, easy replacements, and a modular system built to adapt. Complete with combined trims, reveals, and corners this system delivers the performance pros need and the clean lines designers love.

(Panels supplied by architectural millworkers or other providers).

LEARN MORE AT

monarchmetal.com/snap



MONARCH
METAL INC.



Because of its minimal force requirements and pull-free function, Accuride's 3832ETR meets ADA-compliance parameters.

tional (accuride.com) that eliminates the need for knobs or handles. It supports loads up to 100 lbs. for drawers up to 24" wide, and is specially opti-

now offers heavy-duty ball-bearing drawer slides that are equipped with its patented Force Management soft-close technology. The 8850FM

is a 200-lb. slide that combines low opening pull force with effective dampening that eliminates drawer slamming. The full-extension slides have traditional and 32mm hole patterns and a lever disconnect for easy drawer removal. They're recommended for drawers up to 42" wide.

The new 180SUS stainless-steel hinge from California-based **Sugatsune America** (sugatsune.com) comes with a built-in damper and is ideal for both high volume and outdoor locations. It has been tested to 30,000 cycles and has passed 72-hour salt spray testing, which is welcome news for boat builders, outdoor furniture manufacturers, and RV cabinet shops.

NEED A LIFT?

The latest generation of Aventos lifts from **Blum** (blum.com), the HKI, can be housed in 5/8" thick cabinet sides, making it virtually invisible for that refined, minimalist look in contemporary interiors – even with glass paneled doors when they're closed. It's tough, strong, and most important, easy to install. The system works for top-hinged doors up to 24" tall and 72" wide.



Berenson has introduced a new look at old standards by presenting the Folklore collection in popular sizes and finishes.



WWW.CASTALY MACHINE.COM



SAME STRENGTH. SMARTER PRICE.

SUPER OFFER! CNC 3 Spindles Machine Center Start at CNC-83-DU \$58,990.00	SUPER OFFER! Moulder SM-166D 6" 6 HEADS \$34,990.00 SM-236D 6" 9 HEADS \$52,990.00	SUPER OFFER! Dovetail Machine CM-A19 SEMI AUTO \$10,690.00 CM-600 CNC PROGRAM \$22,690.00
SUPER OFFER! CNC Router 404C 4'x4' \$9,690.00 408C 4'x8' \$12,990.00 510C 5'x10' \$15,290.00	SUPER OFFER! Wide Belt Sander WS-A2560 25'x60' \$11,990.00 WS-A3775 37'x75' \$20,990.00 WS-DA3760 37'x60' Two Heads \$25,990.00	SUPER OFFER! Two Side Planer PL-12S 12" Spiral Heads \$17,990.00 PL-24S 24" Spiral Heads \$33,990.00

USA: +1.626.968.6330
 West: 637 Vineland Ave, La Puente, CA 91746
 East: 331 Jim Cline Rd, Lawndale, NC 28090

Canada: +1.579.420.1794
 803 Rte 202 Ouest, Bedford, QC, Canada J0J 1A0

Email: info@castalymachine.com
 Website: www.castalymachine.com





The clever HIDDI is a lighting option from Richelieu Hardware that turns on and off automatically with an infra-red sensor.



Grass America has developed a clever anti-tipping mechanism that can be installed during assembly, or later at the jobsite.



Fulterer's heavy-duty slide systems such as the FR 771A shown, can be upgraded with the company's Easy Close Device.

SANDMAN Products

Sanding Tables, Sanding Booths, & Inspection Lighting



SAND PRO®

- Sanding Tables
- Sanding Booths
- Inspection Lighting

Phone: 800-265-2008 • info@sandmanproducts.com • www.sandmanproducts.com



These examples of the new Modern Metal Pulls line from Richelieu were inspired by the late Italian artist Alba Lisca Polenghi.

The company has also introduced a new family of box systems, Merivo-Box, which is flexible, attractive, and easy to build and adjust. For clients who wish to move away from wooden drawer boxes, this very standardized new option can achieve a number of different looks by using just a few basic components.

Hardware Resources (hardwareresources.com) has expanded its HR Max functional hardware product line to include new heavy-duty European lever-top hinges. The new soft-close 700 and self-close 725 Series hinges feature a U.S. patent-pending design that enables tool free installation and removal to

save time and frustration when removing doors for finishing.

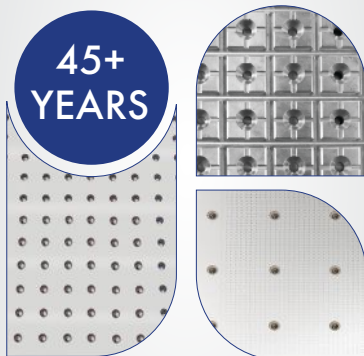
Rev-A-Shelf's sleek and trimmable Yo-Yo Pull-Down shelving system is a space-saver that's designed for wall cabinets. It offers gas-spring-assisted operation with a side-mount design that maximizes storage space.

The Exedra system from **Salice America** (salice.com) has been awarded the Best of the Best prize at Interzum 2025, which is held in Germany each year. The prize-winning Salice products, Exedra2 Star and Exedra2 Smart, enable the simultaneous movement of two linked doors using a very smooth, magnetically assisted, motion control system. The system eliminates the need for cables, tie rods, or springs. In the Star version, the mechanism remains concealed behind the cover panel, while the Smart version reveals the door edges when folded in the pocket.

Company contact information is available from our online Resource Guide at woodshopnews.com. **W**

CERTIFIED FLAT. BUILT TO HOLD.

Our vacuum tables deliver reliable holding force. No clamps required. Designed for precision airflow and consistent performance, they reduce setup time and retrofit seamlessly with your existing equipment. For expert guidance, custom solutions, and responsive support, contact us directly.



VACUUMTABLES
773.777.0909

WHAT'S YOUR TYPE?



BREAK THRU THE FRIEND ZONE

- Wood Projects That Last!
- Does Not Split The Wood
- Sharp Self Driving Points
- Deep Holding Threads



McFeely's

WoodWorking Supplies and Fasteners

mcfeelys.com | 800-443-7937

Safely Clear DEBRIS

Looking for a safer way to clear dust, fibers, and particles? Jet-Kleen delivers high-velocity, non-compressed air cleaning that's tough on particles, but gentle on people, equipment, and surfaces.



PROTECTS GEAR. DEFEATS DUST.

Jet-Kleen keeps your workspace clean and your team safe.



NO COMPRESSED AIR. NO RISK.
Jet-Kleen™ combines high-performance drying and debris removal with full OSHA compliance.



specializedsafetyproducts.com

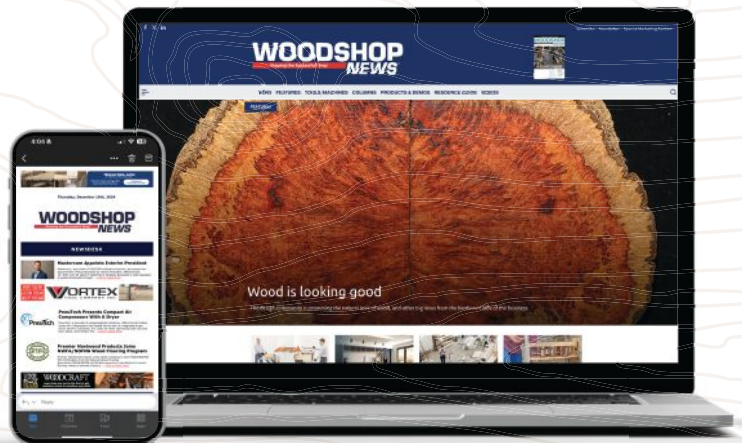
WOODSHOP NEWS



STAY UP TO DATE:

**Subscribe for Expert Advice Relevant for
Small to Mid-Sized Professional Woodshops.**

- Be the first to know about the latest news, business trends, advice, and new products for professional woodworkers.
- Exclusive Offers and Discounts
- Free & Easy to Join



Love what you're reading?
Sign up now for our Woodshop News e-newsletter.
It's quick, simple, and completely free!
Just scan or click on the QR code to get started.





DESIGNS OF DISTINCTION

introduces new Knurled Brass Foot Rail Kits. They feature 1.5" diameter tubes and fittings, scaled for home bars, kitchen islands, and built-in cabinetry. Available in 8' and 10' kits, each set includes lacquered polished brass components with a knurled texture engraved directly into solid cast brass. Custom lengths and finishes are available upon request. Learn more at brownwoodinc.com/dod.

IRON BULL MFG.

now offers a selection of hoppers with capacities from 1/2 to 3 cubic yards and Quick Ship convenience. Standard and heavy-duty models are available that can be customized with options like casters and options to allow an operator to dump the contents from the safety of a forklift. Self-dumping and drop-bottom designs are also available. Learn more at ibullmfg.com.



JEFFREY ALEXANDER

by Hardware Resources introduces the Jules Collection of decorative hardware. "The Jules Collection is a striking blend of architectural refinement and classic allure," the company explains. "Its softly tapered bar and sleek pedestal foot create a sophisticated focal point for cabinets and furniture." The collection includes six standard pull lengths, a coordinating knob, and two appliance handle sizes, all available in five finishes. Learn more at hardwareresources.com.





WOODPECKERS

presents the new Freehand Guard which quickly mounts to any Woodpeckers router lift and enhances safety while also removing over 90 percent of the shavings, according to the company. "The new and improved Freehand Guard is an update to their original version from a few years ago," the company explains. "This injection-molded version accommodates thicker material up to 1-3/4". Like the original design, the opening directs the chips towards the dust port and provides two fulcrum points to start the cut, much like a starter pin. A crystal-clear acrylic guard keeps your hands away from the bit without obstructing the view. The dust port efficiently removes the chips and is compatible with both 2-1/2" dust collection hose and 2-1/4" shop vac hose." Learn more at woodpeck.com.



GRIZZLY INDUSTRIAL

presents the G0991 Quiet Series horizontal cyclone dust collector that combines 1-micron filtration with a unique horizontal design and lockable casters for both point-of-use and permanent installations. "This collector is engineered for quiet operation and exceptional efficiency, offering features designed to significantly enhance dust management," said Pat Raynor, Grizzly Industrial's Product Manager. Learn more at grizzly.com.

Fellowship exhibition in Philly

By Jennifer Hicks

The Museum for Art in Wood in Philadelphia opened "A Plank in a Shipwreck" on Aug. 1, an exhibition created by the fellows of the 2025 Windgate Arts Residency Program in Wood (WARP Wood). It runs through Oct. 19 in the museum's main gallery.



Asem Kamal, a multifaceted artist from Giza, Egypt, with experience in motion, design, video, and DIY, is serving dual roles as artist and documentary fellow. Rounding out the cohort as the Student Artist is University of Arkansas MFA recipient and artist Arden Carlson.

The fellows determined the title and curatorial direction of the exhibition during the two-month residency. "The title is a direct translation of the Latin phrase *tabula in naufragio*, which has been

used in legal concepts to describe a final hope, a last life-line. The phrase is a metaphor for the bold leap each of the 2025 WARP wood fellows has made, crossing oceans and borders, letting go of safety, and trusting the collaborative, uncertain process," the museum explained.



The exhibition represents the culmination of the two-month international residency that supports artistic exploration, collaboration, and collegial exchange among artists and thinkers in wood, the museum explained.

"This year's cohort came to Philadelphia from three continents and five countries, and collectively represent wood-informed approaches including sculpture, performance, marquetry, furniture, sustainable practice, and social engagement, while bridging the gaps between these methods," said Jennifer-Navva Milliken, the museum's executive director, in a statement.

The fellows include Klara Knutsson, a marquetry artist from Stockholm, Sweden; Allen Laing, a sculptor from Pretoria, South Africa; Nifemi Ogunro, a designer, woodworker and sculptor from Brooklyn, N.Y., and Edgar Orlaineta, a sculptor from Mexico City.



PLAYING WITH FIRE

The Museum for Art in Wood is also presenting "Cinders: Burned, Scorched, & Pyrographed Works in Wood" through Sept. 21.

Curated by Amrut Mishra, the exhibition is comprised of 26 objects by 22 artists and drawn from the museum's permanent collection. Its purpose is to delve into the enigmatic tension between permanence and fragility that materializes in fire-treated wood, the museum said.

It includes works of installation, sculpture, and woodturning by artists who experiment with generative possibilities of fire.

Learn more at museumforartinwood.org. **W**

Organizations sponsoring meetings, classes or shows of interest to professional or hobbyist woodworkers are invited to submit items to editorial@woodshopnews.com.

Include name, dates, location, description of event and a contact address or telephone number. Calendar items, which should be typed or printed clearly, must be received at least 60 days before the event.

Please note that fees, as listed, might not include materials or shop fees. Check with a specific class for further details.

— Compiled by Jennifer Hicks

ARIZONA

Nov. 9-11 — Specialty Tools & Fasteners Distributors Association (STAFDA) annual convention and trade show. Location: Phoenix Convention Center. stafda.org

CALIFORNIA

Monthly — San Fernando Valley Woodworkers meetings are held on the third Thursday of each month at 7 p.m. at the Balboa Sports Center in Encino. sfvw.org

Monthly — Society of Wood Manufacturing, a chapter of AWFS consisting of educators, manufacturers, hardware and industrial suppliers, and machinery dealers, meets during the second week of each month. For location and dates, visit awfs.org.

Monthly — San Joaquin Fine Woodworkers Association meetings are open to all experience levels at members' shops. For locations and dates, visit sjfwa.com.

IOWA

Oct. 10-11 — Woodworking in America, hosted by Woodsmith, Popular Woodworking and Fine Woodworking, featuring presentations from experts, networking opportunities, product vendors, and more. Location: Iowa State Fairgrounds in Des Moines. finewoodworking.com

MAINE

Ongoing — The Center for Furniture Craftsmanship offers year-round classes in woodworking to the highest degree of craftsmanship. One- and two-week workshops from June through October; 12-week Furniture Intensives; a nine-month Comprehensive; eight-week Turning Intensives, and Fellowships. woodschool.org

MASSACHUSETTS

Oct. 11-13 — Paradise City Arts Festival Fall Show, featuring handmade work from over 200 juried artisans and makers. Location: Three County Fairgrounds, Northampton. paradisecityarts.com

Nov. 21-23 — Paradise City Arts Festival Fall Show, featuring handmade work from over 200 juried artisans and makers. Location: Royal Plaza Trade Center, Marlborough. paradisecityarts.com

MICHIGAN

Oct. 1-3 — Cabinet Makers Association's National Conference featuring keynote presentations, educational sessions, plant tours and more. Location: Westin Book Cadillac Detroit. cabinetmakers.org

MINNESOTA

Oct. 11 — Sixth annual Woodworkers Expo, hosted by the Minnesota Woodworkers Guild, featuring over 70 exhibitors showcasing custom work and products, demos, and more. Location: Minnesota State Fairgrounds Progress Center in St. Paul. mnwwwg.org

NEW HAMPSHIRE

Nov. 9 — Third annual New England Woodworking Competition hosted by the Guild of New Hampshire Woodworkers, featuring Tom McLaughlin as Master of Ceremonies, and keynote speakers Jeffrey Cooper, a professional carver, and Mike Pekovich, Editor of Fine Woodworking. Location: Granite State Room, MUB Center, University of New Hampshire in Durham. gnhww.org



RTA Cabinets & Skinny Shaker Doors

- 7-10 Day Lead Times
- Online Order System
- Miter Joint Construction
- Custom Finishing
- Made In Arkansas
- Custom Design Service
- Custom Sized
- Multiple Material Options
- KCD Users, send door report to AWD

Custom Cabinet Doors | Floating Shelves | RTA Cabinets

479-968-5486
order@arkansaswooddoors.com
www.arkansaswooddoors.com

NEW JERSEY

Monthly — The North Jersey Woodworkers Association meets the third Monday of every month. njwawoodworkers.org

Monthly — The Professional Woodworkers Guild of Upper New Jersey meets the third Wednesday of every month. njwoodguild.com

NEW YORK

Nov. 1-6 — The Art of Chairmaking: Dolese Rocking Chair with Alexis Dolese. Craft your own rocking chair from start to finish while learning advanced techniques like shaping elegant arms and mastering slip-tenon joinery. Fee: \$1,100, plus \$100 materials. Location: Wendell Castle Workshop in Scottsville. workshop.wendellcastle.org

Nov. 15-16 — Introduction to Wood Veneering with a Unique Chessboard with instructor Scott Grove. Create a highly-figured chessboard with a mother of pearl inlay with a water fall edge and a creative Wendell twist. Fee: \$385, plus \$50 materials. Location: Wendell Castle Workshop in Scottsville. workshop.wendellcastle.org

NORTH CAROLINA

Oct. 25-29 — Fall High Point Furniture Market. The

furniture industry trade show features showroom tours, vendors, speakers, educational seminars, and networking events. highpointmarket.org

RHODE ISLAND

Nov. 7-9 — 30th annual Fine Furnishings show featuring fine handcrafted furniture and other artwork for the home. Location: WaterFire Arts Center in Providence. Learn more at finefurnishingsshows.com.

TEXAS

Oct. 1-3 — National Hardwood Lumber Association's annual convention. Location: Marriott Rivercenter in San Antonio. nhla.com

Oct. 19-21 — Architectural Woodwork Institute's annual convention. Location: Hyatt Hill Country Resort in San Antonio. awinet.org

VIRGINIA

Oct. 10-13 — Society of American Period Furniture Makers' annual conference, featuring presentations, networking opportunities, and the Cartouche Award banquet. Location: Colonial Williamsburg. Register and learn more at sapfm.org. **W**

BEADED FACE FRAMES?

**WE WILL TAKE YOU FROM DRAWINGS TO "DONE".
NO TAPE MEASURE NEEDED!**

- All-in-One Combination includes positioning system, cut-off saw and MORSO notching machine

- Quickly design individual face frames on touch-screen or download complete job files

- Included software is compatible with most PLANIT software versions

- Videos and technical specs. online at www.hoffmann-usa.com



HOFFMANN

Hoffmann-USA.com
Toll-free: (866) 248 - 0100





ISLAND LEGS

100s of profiles • 10+ wood species




WWW.OSBORNEWOOD.COM • (800) 849-8876

CLASSIFIED MARKETPLACE


E-Mail marketplace@woodshopnews.com for Advertising Information

Clamp Hold

PROFESSIONAL EDGE CLAMP



PANEL CARRIER **HOFFMANN**



Hoffmann-USA.com Toll-free: (866) 248-0100

Doors Drawers

"Your Single Source Provider"



Doors, Drawers & More

- No Quantity Limits
- Over 70 Different Grades/Wood Species
- Design Flexibility
- Custom Sizes
- Finished or Unfinished
- Timely Delivery

WalzCraft

WalzCraft.com 800-237-1326

Hardwoods

RARE WOODS USA

www.rarewoodsusa.com • (207) 364-1520

120 species of exotic & domestic woods
Ebony, Olive, Rosewood, Satinwood, etc.
\$3 million inventory – buy 1 plank or 1000!

STEVE WALL LUMBER CO.
Quality Hardwoods and Woodworking Machinery
For The Craftsman and Educational Institutions.

The trusted supplier from the Heart of North Carolina Furniture County.

- HARDWOODS • EXOTICS • THIN CRAFTWOOD • AROMATIC CEDAR
- HARDWOOD PLYWOOD • CUSTOM PANEL DOORS • HARDWOOD FLOORING

See Our Catalog on the WEB: walllumber.com

BOX 287 • MAYODAN, N.C. 27027
336-427-0637 • 1-800-633-4062
Email: wood@walllumber.com
SEND \$1.00 FOR CATALOG

Place
your
AD
here!

THE ULTIMATE VACUUM-POWERED, ROTATING & FINISHING STAND!



PS-1

QR code

Fasteners

MONARCH
METAL FABRICATION

Easy Wall Panel System

Simple, decorative aluminum trim



(631) 750-3000
monarchmetal.com

Lumber

LET'S GET WOODWORKING

HARDWOOD LUMBER & PLYWOOD

KILN DRIED
HARDWOODS: Domestic, Imported, Figured & Quartersawn

PLYWOOD: Domestic, Imported, Cabinet & Marine Grade

LL JOHNSON LUMBER MFG CO & JOHNSON'S WORKBENCH

theworkbench.com | 800-292-5937

Doors Drawers

Custom
Components
to Complete
Cabinetry



EliasWoodwork

1-800-665-0623
www.eliaswoodwork.com

WOODSHOP NEWS

Advertise Here!

Call 203-952-6790 or email: rbeglin@aimmedia.com

CALL
203-952-6790

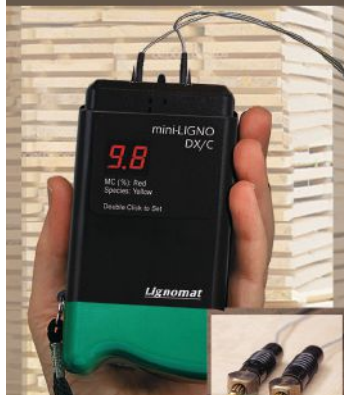
CLASSIFIED MARKETPLACE

E-Mail marketplace@woodshopnews.com for Advertising Information

Moisture Meters

Moisture Meters

multiple use
in-kiln and everywhere else



Call
800-227-2105
www.Lignomat.com

Services

EXPERT ROUTER SPINDLE REPAIR



CALL TODAY (833) 854-2579

Services

CNC ROUTER BIT SHARPENING

*Spiral & Compression Router Bits
Sharpened to Factory Specifications,
using 5 Axis CNC Grinder*

DISCOUNTED PRICING
ON CNC TOOLING FROM:



*100% Satisfaction
Guaranteed*

**FAST TURN-AROUND &
FREE SHIPPING ONE WAY!**



**CONNECTICUT
SAW & TOOL**

800.404.1220

140 Avon Street • Stratford, CT 06615
info@ctsaw.com • www.CTSAW.com

Veneer

SUPERIOR VENEER Artisan Thick

**1/16" Artisan Thick domestic &
exotic veneers**

4 x 8 & 4 x 10
5 x 8 & 5 x 10

Available as:

Face
Paperbacked
MDF, Particle Board, Veneer Core
substrates



www.superiorveneer.com
ph: 855.940.7827 fax: 812.941.8780
1819 Dewey St. New Albany, IN 47150



**The classifieds have
what you need.**

Call: 203-952-6790

Scraping & Sanding

**THE HANDY
HEAVY-DUTY
EDGEBAND
TRIMMING TOOL**



SNX
www.snxtechnologies.com
(320) 380-3800

**Give Your
Marketing
A
Boost!**



Call TODAY!

203-952-6790 or

rbeglin@aimmedia.com

**WOODSHOP
NEWS**
Shaping the Successful Shop



Find everything you need to build your dream wood home — all under one roof!



Meet with the industry's foremost log and timber home producers. See first-hand how various building systems are constructed.



BECOME A KNOW-IT-ALL!

Attend our **Log & Timber University** for detailed, step-by-step instructions on budgeting, planning and building your dream home.

The course is \$95 per person or \$129 per couple (plus \$30 for each additional attendee with the group). This fee covers the Course Guide, a comprehensive textbook to guide you through the entire homebuilding process; a notepad and assorted log & timber magazines; continental breakfast or snacks; plus FREE Lifetime Alumni Pass to the Log & Timber Home Shows.

presented by
LOG HOME
LIVING
Timber Home Living
Cabin LIFE .com

Visit www.LogHome.com/shows to find a show near you!

SEPTEMBER 2025

55

WOODSHOPNEWS

ADVERTISING INDEX

Amana Tool	www.amanatool.com	C4	Maksiwa USA.....	www.maksiwa.com/en/	17
Anderson America Corp.....	www.andersonamerica.com	2	MARTIN Woodworking Machines	www.martin-usa.com	4
Arkansas Wood Doors	www.ArkansasWoodDoors.com	51	McFeelys.....	www.mcfeelys.com	46
Cabinet Pro LLC	www.cabinetpro.com	5	Monarch Metal Fabrication	www.monarchmetal.com	43
Cantek America Inc.....	www.cantekamerica.com	42	New England Drawer	www.newenglanddrawer.com	24
Castaly Machine	www.castalymachine.com	44	Oneida Air Systems Inc	www.oneida-air.com	7
Colonial Saw / Lamello	www.csaw.com	40	Osborne Wood Products, Inc	www.osbornewood.com	52
Connecticut Saw & Tool.....	www.ctsaw.com	26	Resource Guide	http://resourceguide.woodshopnews.com	C3
Create-A-Bed	www.wallbed.com	18	Richelieu	www.richelieu.com/us/en/	22
Elias Woodwork	www.eliaswoodwork.com	23	Rockler Woodworking & Hardware.....	www.rockler.com	11
Grizzly Industrial, Inc	www.grizzly.com	28-29	SandMan Products	www.sandmanproducts.com	45
Guffey Systems.....	www.guffeysystems.com	13	Shop Fox.....	www.shopfox.biz	C2
Hafele America Co.....	www.hafele.com/us	9	Vacuum Tables.....	www.vacuumtables.com	46
Hettich	www.hettich.com	1	Vexor Custom Woodworking Tools.....	www.vexorcwt.com	25
Hoffmann Machine Company.....	www.hoffmann-usa.com	52	Vortex Tool Co., Inc.....	www.vortextool.com	16
JET KLEEN	www.specializedsafetyproducts.com	46	Wagner Meters.....	www.wagnermeters.com	21
KCD Software	www.KCDsoftware.com	41	Wood Pro Expo.....	woodproexpo.com	19
KLINGSPOR Abrasive	www.klingspor.com	3	Woodworking in America	www.WoodworkingInAmerica.com	27
Lignomat USA, LTD	www.lignomat.com	12			
Macoser, Inc	www.macoserwood.com	20			

Expanding the historic preservation trades

The Michigan Historic Preservation Network (MHPN) and Sam Beauford Woodworking Institute (SBWI) in Adrian, Mich., have announced a partnership aimed at revitalizing historic preservation trades education in Michigan.

This collaborative initiative will offer a series of specialized hands-on workshops, covering essential preservation skills such as historic sash window construction, wood bending techniques, and timber frame engineering.



Students learning a variety of preservation skills at the Sam Beauford Woodworking Institute.

The initiative is funded in part by a grant from the Michigan Arts and Culture Council.

"MHPN is proud to partner with SBWI, an institution known for excellence in trade education," said Brenda Rigdon, executive director of the MHPN. "Together, we're not just preserving historic buildings, we're preserving the specialized knowledge that makes such preservation possible."

Learn more at sbwi.edu and mhpn.org. **W**

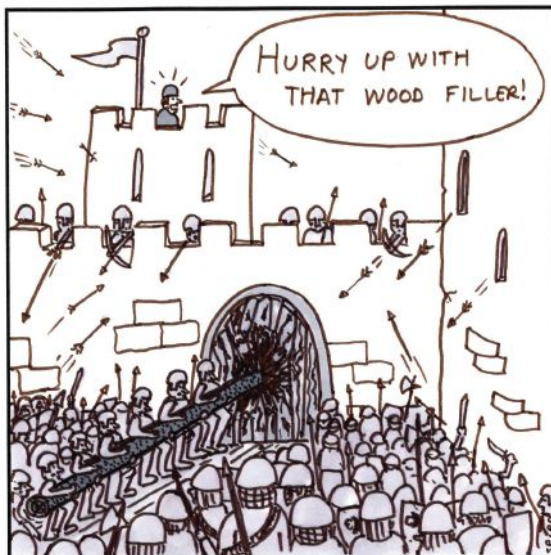
—Jennifer Hicks

"This partnership represents a major step forward for preservation trades," Luke Barnett, president of SBWI, said in a statement. "Skilled trades are the backbone of heritage conservation, yet many of these critical skills are at risk of disappearing. By teaming up with MHPN, we are providing accessible, high-quality training opportunities, preparing a new generation of craftspeople to preserve and protect Michigan's historic architecture."



60 Grit

Rough humor by Steve Spiro



Courtesy of MHPN

Your online solution to finding the products you need

Over 300 companies listed, covering well over 250 products and services categories.
If you are looking for it, we can help you find it.

Link through our website www.WoodshopNews.com or go direct
Resourceguide.WoodshopNews.com



Resource Guide Showcase Sponsors



A fast and easy research tool to help you determine which companies can
supply the products and services you are looking for.



2025 Resource Guide

For marketing information,
sales@woodshopnews.com

THE ORIGINAL *colorful* EXTREME COATED ROUTER BITS



**HARDER
CARBIDE**



UP TO
2.5X
LONGER LIFE
COMPARED TO UNCOATED BITS

The original colorful extreme coated Industrial Spektra™ router bits feature a micro-thin nACo ceramic coating that enables the tool's cutting edge to retain crucial sharpness and lubricity. This provides longevity and produces cutting results of the highest quality. Coating prevents high heat and oxidation which is detrimental to cutting tool performance.

THE ONLY
SPEKTRA™
EXTREME TOOL LIFE COATING

INSAND™
CNC SANDER

The #61299 IN-SAND™ CNC Sander is a precision-engineered, non-random orbital CNC sanding tool designed for sanding wood and resin surfaces. It features a 1/2" shank, making it compatible with many CNC machines. The sander is dynamically balanced to ensure smooth operation and reduce vibration during use.



Amana Tool®

1-800-445-0077

www.amanatool.com