

# WOODSHOP

SHAPING THE SUCCESSFUL SHOP™

www.woodshopnews.com

January 2025

# NEWS®

## Preserving the future

Terry Fasnacht ponders the next chapter of Conestoga Valley Custom Kitchens

New jigs & cutting guides

Exploring the options:

- Small-shop dust collectors
- Material handling equipment

Cherry is ripe for picking

## NEW TOOLS

- iCARB countersinks
- Laguna desktop CNC
- MTC's Gemini split-bridge CNC
- Oliver benchtop planer

\$3.95 (Canada, \$5.95)



# EXCELLENT ACCURACY & RELIABILITY

*Quality machines with  
proven performance.*



***grizzly.com/shopfox***



*Available at these fine retailers:*

***grizzly.com***

**JB TOOLS**

**ACME TOOLS**

**THE TOOL NUT**

**& MORE!**  
*See website for details*



# THE TOP PERFORMER IN ITS CLASS



## Quadro 5D runner for wooden drawers



Find more  
information here:  
[hettich.com/short/  
7izegx9](https://hettich.com/short/7izegx9)

Make a statement with the newest member of the Quadro runner family. Featuring 5 adjustments and integrated Silent System, its exceptional running action sets a new standard. Enhance your experience with the optional push-to-open silent feature – a perfect blend of style and functionality. **IT'S ALL IN HETTICH.**



**Hettich**

# MARTIN

Woodworking Machines



Quality  
Made in  
Germany

# T12 T27

The T27 Flex simplifies setup with touchscreen control and tool conversion, while the compact T12 offers premium features and precision engineering for diverse applications.

Discover our range  
of machines and Accessoires  
for your workshop.



[www.martin-usa.com](http://www.martin-usa.com)

[info@martin-usa.com](mailto:info@martin-usa.com), 8715 Sidney Circle, Suite 100 Charlotte, NC 2829, 704-921-0360



# Table of Contents



Photos: Jennifer Hicks (top, cover)

30

## Features

- 8 PLAY FOR PAY:**  
New jigs and cutting guides to make woodworking more enjoyable and productive.
- 20 JUST THE FACTS ON VACS**  
Exploring the options and components of small-shop dust collectors.
- 30 PRESERVING THE FUTURE:**  
Terry Fasnacht ponders the next chapter of Conestoga Valley Custom Kitchens.
- 36 WHEN EVERY DAY IS MOVING DAY**  
Solutions and options for a shop's material handling needs.

## News Desk

- |  |  |
|--|--|
| <b>14 WOOD MARKETS:</b><br>Cherry is ripe for the picking. | <b>15 KCMA opens Design Awards competition.</b>    |
| <b>15 Wendell Castle Workshop looks to expand in 2025.</b> | <b>16 Harbor Freight gives to trade educators.</b> |

Woodshop News, (ISSN 0894-5403, U.S.P.S. 000-966), Vol. XXXIX, NO. 2, is published monthly by Active Interest Media, Holdco, Inc. The known office of publication is 2143 Grand Ave., Des Moines, IA 50312. Periodicals postage paid at 2143 Grand Ave., Des Moines, IA 50318-9652, and additional mailing offices. \$21.95 for one year; \$35.95 for two years (Canadian subscribers add \$12 per year for postage; U.S. funds, foreign subscribers add \$14 per year for postage; U.S. funds). Postmaster: Send address changes to WOODSHOP NEWS, PO Box 37274, Boone, IA 50037-0274. Printed in the U.S.A. POSTMASTER: Send all UAA to CFS. (See DMM 507.1.5.2); NON-POSTAL AND MILITARY FACILITIES: Woodshop News, Circulation Department, PO Box 37217, Boone, IA 50037.

DISCOVER MODERN SOPHISTICATION WITH THESE GROOVY NEW RTF DOOR STYLES



*Quality Committed, Timely Delivered,  
Environmentally Driven*

**1-800-665-0623**

[www.eliaswoodwork.com](http://www.eliaswoodwork.com)

**Your Cabinetry Component Supplier!**

**Come see us! KBIS Booth #W1165**



**NEW YEAR  
NEW DEALS ARE HERE**

**ELEVATE  
YOUR WORKSHOP**

**BIG SAVINGS WITH OUR  
NEW YEAR SPECIALS  
CALL US TODAY!**

FELDER GROUP USA  
CALL TODAY FOR MORE INFO Toll free 866-792-5288  
sales-us@felder-group.com | [www.feldergroupusa.com](http://www.feldergroupusa.com)





18



44

## Tools & Techniques

- 17 Oliver updates its benchtop planer.
- 18 Increase output with Machine Tool Camp's Gemini split-bridge CNC.
- 18 A new twist on countersinks from Make it Snappy Tools.
- 19 Laguna adds a new desktop CNC.

45



## Departments

- 6 Taking Stock
- 44 At the Galleries
- 45 New Products
- 51 Calendar
- 53 Classified
- 55 Advertiser Index
- 56 Out of the Woodwork

Visit us online at [www.woodshopnews.com](http://www.woodshopnews.com)

### BLOGS



#### Over the Workbench

Talkin' shop with former editor A.J. Hamler

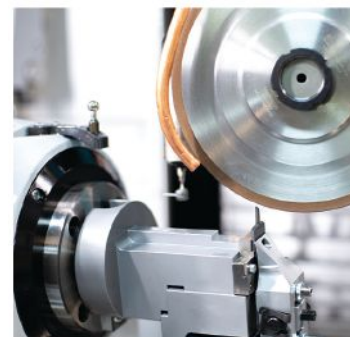
**2025 Online Resource Guide**  
<http://resourceguide.woodshopnews.com>

- **Contact Customer Service**  
[www.woodshopnews.com/subscribe](http://www.woodshopnews.com/subscribe)
- **Tools & Machinery**  
[www.woodshopnews.com/tools-machines](http://www.woodshopnews.com/tools-machines)
- **Contact the Staff**  
[www.woodshopnews.com/contact-us](http://www.woodshopnews.com/contact-us)
- **Advertising Information**  
[www.woodshopnews.com/advertise](http://www.woodshopnews.com/advertise)

## CUSTOM CARBIDE INSERTS

*Send us a sample and we will  
REVERSE ENGINEER your custom insert!*

- Creates a Precise & Consistent Profile
- Quickly change dull tools in place
- Fast lead times
- Discounts for quantity orders



## FAST LEAD TIMES & COMPETITIVE PRICING

Connecticut Saw & Tool offers custom carbide inserts with **fast lead times and exceptional precision**. Send us your insert and we will reverse engineer and produce it for you.

Our state of the art CNC manufacturing and inspection equipment allow for superior quality, competitive pricing, and fast delivery adding up to a service that is:

**100% satisfaction guaranteed!**

*We also stock thousands of standard replacement inserts for all types of woodworking machinery.*

*Call or email for up-to-date pricing & availability.*



**Call Today! 800.404.1220**

140 Avon Street • Stratford, CT 06615  
[info@ctsaw.com](mailto:info@ctsaw.com) • [www.CTSAW.com](http://www.CTSAW.com)



## Bringing you the Best of AIM

By Tod Riggio

Usually, when you roll out a new product or service, you make some kind of announcement. Well, I'm about three months late, but here goes:

In partnership with our sister publications – Fine Woodworking, Popular Woodworking and Woodsmith magazines – we've started a monthly newsletter called the Best of AIM. It's a collection of stories, videos and podcasts from the Woodworking Group of Active Interest Media (AIM). And it's free with your subscription to Woodshop News, assuming you're getting our regular bi-weekly newsletters. If not, you can sign up at [woodshopnews.com](http://woodshopnews.com).

Now the great thing about our group is that we have a magazine for every ability, from hobbyist to professional. That's reflected in the content of this new newsletter. So, keep an eye out for "Best of AIM" in the subject line as you scroll through your email. I'm confident you'll find something of interest.

The **Cabinet Makers Association** (CMA) has made changes to its leadership team with Hans Parker (Board Foot Co.) becoming Vice President and Jason Norvell (Norvell Inc.) joining the Board of Directors.

"These leadership changes follow the dedicated service of Lois Snyder (Periwinklers), who has resigned from the remainder of her term due to personal reasons," the CMA said in a statement. "Lois has been an invaluable asset to the CMA, bringing years of expertise and passion to the association's mission. The CMA extends its heartfelt gratitude to Lois for her contributions and commitment."

"Jason Norvell was hand-selected by the board to fill this key role, bringing his extensive industry experience and innovative perspective to the team. As the newest board member, Jason is poised to help guide the association in its ongoing mission to support and elevate the woodworking and cabinetry profession."

"Hans Parker, the newly appointed Vice President, has been a driving force within the CMA. His leadership and vision will play a critical role in advancing the association's objectives, ensuring the continued growth and success of its members and the broader industry."

This story caught my attention: **U.S. Customs and Border Protection** (CBP) recently intercepted over 3,000 counterfeit **Gibson** guitars at the Los Angeles/Long Beach Seaport. They would have retailed for nearly \$19 million.

CBP officers in coordination with Homeland Security and Los Angeles County Sheriff's Department investigators intercepted the suspected cargo arriving in ocean containers from Asia. Gibson confirmed that the guitars intercepted were in fact counterfeit, noting that legitimate Gibson guitars are only made in the U.S.

"We are grateful for the hard work that our U.S. CBP officers, HSI special agents, and the Los Angeles County Sheriff's Department investigators are doing to stop counterfeiting," said Cesar Gueikian, CEO of Gibson. "To our music lovers and customers, no matter which American brand you decide buy, always buy direct from the source, or from authorized dealers." **W**

PRESIDENT GARY DESANCTIS

EDITOR TOD RIGGIO  
ART DIRECTOR BRIANA SMITH  
STAFF WRITER JENNIFER HICKS  
CONTRIBUTING WRITERS  
JOHN ENGLISH, DAVID GETTS AND TED BRUNING

SALES & MARKETING

PUBLISHER  
RORY BEGLIN  
203-952-6790; [rory@woodshopnews.com](mailto:rory@woodshopnews.com)

CLASSIFIED MARKETPLACE ADVERTISING  
203-952-6790  
[marketplace@woodshopnews.com](mailto:marketplace@woodshopnews.com)



SENIOR VICE PRESIDENT, CONTENT ROB YAGID  
DIRECTOR, SALES OPERATIONS HEATHER GLYNN GNIAZDOWSKI

DIGITAL DEVELOPMENT MANAGER MATTHEW BOYLES  
PRODUCTION MANAGER SUNITA PATEL  
PRODUCTION COORDINATOR MARISSA WOODS  
ADVERTISING OPERATIONS COORDINATOR ARIANA PINTO  
CIRCULATION, FULFILLMENT MANAGER JAMES JACKSON



ACTIVE INTEREST MEDIA



CHAIRMAN & CEO ANDREW W. CLURMAN  
CHAIRMAN EMERITUS EFREM ZIMBALIST III  
CHIEF OPERATING OFFICER BRIAN VAN HEUVERSWYN  
CHIEF FINANCIAL OFFICER ADAM SMITH  
CHIEF REVENUE OFFICER GARY DESANCTIS  
SENIOR VICE PRESIDENT, MARKETING ERICA MOYNIHAN  
VICE PRESIDENT, MARKETING AMANDA PHILLIPS  
VICE PRESIDENT, CIRCULATION PAIGE NORDMEYER  
VICE PRESIDENT, SALES OPERATIONS CHRISTINE NILSEN  
VICE PRESIDENT, EVENTS JULIE JARVIE  
VICE PRESIDENT, DIGITAL PRODUCT DEVELOPMENT ASHLEY MACDONALD  
VICE PRESIDENT, STRATEGY & RESEARCH KRISTINA SWINDELL  
DIRECTOR, HUMAN RESOURCES SCOTT ROEDER  
DIRECTOR, PRODUCTION PHIL GRAHAM  
DIRECTOR, RETAIL SALES SUSAN A. ROSE  
DIRECTOR, INFORMATION TECHNOLOGY ANDREW SHATTUCK

### HEADQUARTERS:

35 Industrial Park Road, Unit 10 Centerbrook, CT 06409  
(860) 767-3200 • Fax (860) 767-0642  
Editorial E-mail: [editorial@woodshopnews.com](mailto:editorial@woodshopnews.com)  
Advertising E-mail: [sales@woodshopnews.com](mailto:sales@woodshopnews.com)  
Website: [www.woodshopnews.com](http://www.woodshopnews.com)  
Advertising Billing Questions: (661) 965-9925

### SUBSCRIPTION SERVICES:

For questions, problems, or changes to your Woodshop News subscription,  
Online: [www.woodshopnews.com/customerservice](http://www.woodshopnews.com/customerservice)  
call: 800-243-9177

EMAIL: [Marinesubs@aimmedia.com](mailto:Marinesubs@aimmedia.com)  
write: Woodshop News, PO Box 433212, Palm Coast, FL 32143-3212  
Canada Post Return Address undeliverable to:  
APC-PLI, P.O. Box 503, RPO West Beaver Creek,  
Richmond Hill, ON L4B 4R6.  
Canada Post Publication Mail Agreement No 40624074.



## WEIMA AMERICA TURNS 25

WEIMA America Inc. marked a significant milestone, celebrating its 25th anniversary in the North American market with a two-day event at its headquarters in Fort Mill, S.C. The occasion was attended by team members, partners, and esteemed guests, including Peter Rössler, founder of WEIMA, and Managing Partner, Martin Friz.

Founded in 1999 in Fort Mill, WEIMA America was the vision of Peter Rössler, who saw immense potential in the North American market. Rössler, having established WEIMA Maschinenbau, GmbH in Germany nearly two decades earlier, recognized Fort Mill's strategic location near East Coast ports and major interstates as ideal for importing and distributing large machinery, according to the company.

Since then, WEIMA has grown to serve a broad range of industries, providing shredders for plastics, paper, waste-to-energy, metals, and more. With the addition of briquette and drainage presses, WEIMA has solidified its global leadership in size reduction technology.

The event commenced with a day of live demonstrations at the North American headquarters, attracting vendors, dealers, OEMs, business partners, and prospective clients. Ten live demonstrations showcased WEIMA's versatile machinery, including applications such as aluminum can compression, wood dust briquetting, and bathtub shredding.

"We are so proud of the accomplishments we have achieved in the first 25 years of our existence in North America. With the solid team we have in place, the future is unlimited and exciting," said Madison Burt, CEO of WEIMA America.

Learn more at [weima.com/us](http://weima.com/us).

## THERMWOOD PROMOTES MIKE IUBELT

Thermwood Corp. announces the appointment of Mike Iubelt to the Vice President of Sales position. In his new role, Mike will lead the Machining Products Division, overseeing sales and operations to drive growth and innovation within the organization.

"Mike brings a wealth of experience to the position, having dedicated over 22 years to Thermwood in various sales and service capacities. His deep understanding of the industry and proven leadership make him uniquely suited to this key role," the company said in a statement.

"Mike lives with his wife and family in Southern Indiana. We wish Mike much success in his new position at Thermwood!"

Thermwood, based in the United States, is a manufacturer of CNC machining centers and additive manufacturing systems. Learn more at [thermwood.com](http://thermwood.com).

New England  
**Drawer**

**3 DAY** \* Turnaround on beautiful  
Dovetail Drawers

- The gold standard of Dovetail Drawers
- Fast turnaround times
- Competitive pricing
- 2 Drawer grades available
- High customer satisfaction
- Undermount slides available
- USA Made
- Ships nation wide

### ORDERS & INFORMATION:

603-926-2588 | 866-391-3863  
[www.newenglanddrawer.com](http://www.newenglanddrawer.com)

\*Restrictions apply



Made by  
cabinetmakers  
for cabinetmakers



# Play for pay

New jigs and cutting guides to make woodworking more enjoyable and productive

By John English

**Jigs are fun.** Sure, they're incredibly useful, improve accuracy and make us safer, but the bottom line is that they're just plain cool. The difference between a jig and a fixture is that you can usually hang a jig on the wall between uses, while a fixture stays with the machine. Of course, that can be confusing. For example, the MatchFit system from MicroJig uses a fixture (a table with sliding dovetail grooves) to hold all kinds of clamps and jigs. So, what's important is not so much

what we call them, but what they do.

Suppliers such as Incra and Woodhaven have been making precision guides for decades. And there are so many resources online for building shop-made jigs that just doing the research can become addictive. In fact, making jigs can be even more fun than buying them, which is why woodworking consumer magazines have been publishing plans and ideas for shop-built jigs for more than a century.

That makes for a lot of jigs and cutting guides, and they keep on coming. Here's a quick look at some of the most recent ones.

## SPECIALTY JIGS

The new **MortiseMate** from Kreg Tool ([kregtool.com](http://kregtool.com)) lets a woodworker create loose tenon joints using just a drill. There's no need for a router. The device is built around a special cutter that's a hybrid between a drill and a router bit, and the operator





uses a cam-action handle to move the bit sideways to make elongated holes. It's very adjustable, requires minimal setup, and eats into the wood with 1/16" passes. The mortise can be set for a tight or loose tenon fit, and the jig is cleverly designed for clamping and dust collection. The standard bit is 6mm, but Kreg also offers 8mm and 10mm cutters, plus hardwood loose tenons.

Do a search for jigs on the **Rockler** website ([rockler.com](http://rockler.com)) and it will kick out over a hundred results. Among the new ones are a pair of board flattening devices (large and small, item Nos. 59943 and 60808), and a couple of interesting miter sleds (31593, 61373) that let a woodworker make repeated cuts at specific angles for segmented work.

MatchFit Grr-rip Clamps from MicroJig slide into a 1/2" dovetail groove and have pads that hold odd-shaped parts.



The **Jig and Sled Square** from Katz-Moses ([kmttools.com](http://kmttools.com)) is an aluminum square with tabs on one edge that fit into a saw kerf. That allows a woodworker to locate a fence so it sits at precisely 90 degrees to the kerf. The jig can be used to perfect the cut on miter gauges and miter saws, or build the 'ultimate' table saw crosscut sled. It can also be used with a portable circular saw to lay out cuts that are at right angles to an existing kerf, so it can be quite useful when breaking down full sheets of plywood on sawhorses before trimming them on the table saw.

The **Twin Pocket Hole Jig** from Massca Products ([masscaproducts.com](http://masscaproducts.com)) is a simple pocket screw jig with a twist. It has a magnetic quick-adjust base that lets the woodworker locate the screws the perfect distance from an edge.

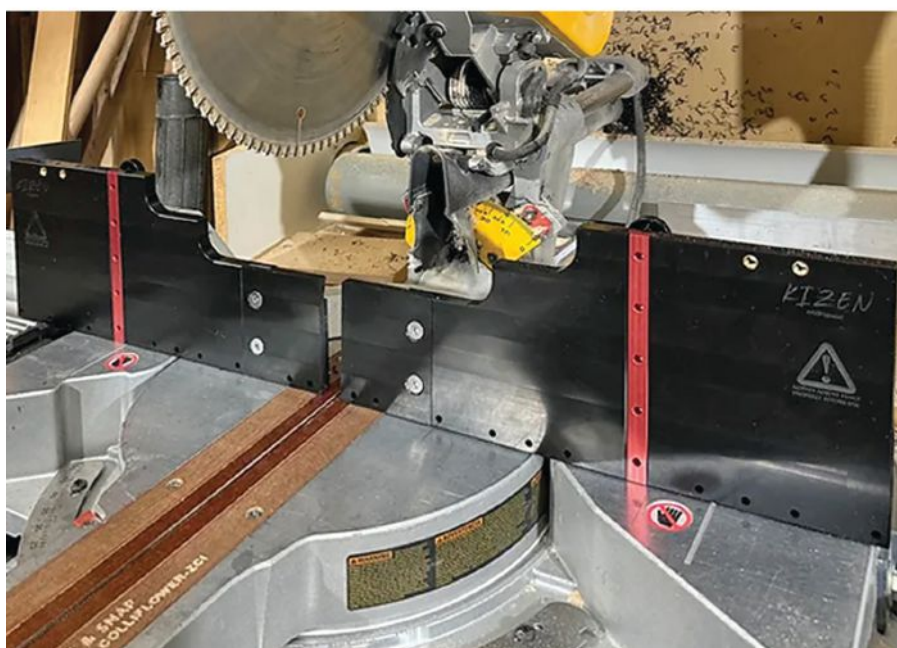
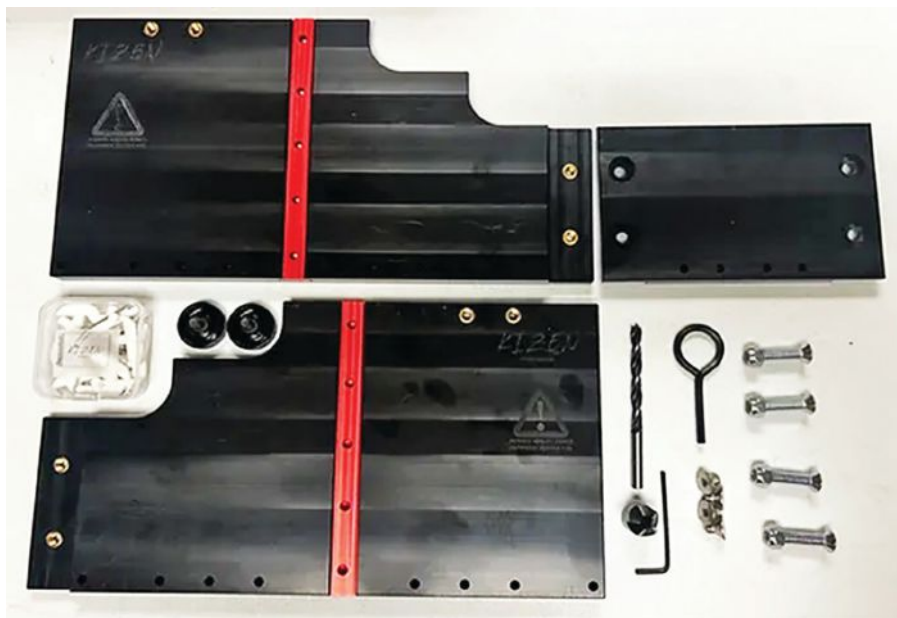
**Bourbon Moth** ([bourbonmoth.com](http://bourbonmoth.com)) is offering plans for a 20" x 20" tenoning jig for a table saw that rides along the fence and can be adjusted for angled tenons. The YouTuber also makes a Universal Table Saw Jig that facilitates the cutting of raised panels, bridal joints, castle joints and other

joinery that requires tall set-ups.

The Kiwi Woodshop in San Diego ([kiwiwoodshop.com](http://kiwiwoodshop.com)) offers a **Juice Groove Jig** that makes it easy to mill a drainage groove in the top of cutting boards. It uses adjustable jig



The Jig and Sled Square from Katz-Moses helps set a fence 90° to a kerf.



Kizen Enterprise makes a fence system for miter saws that improves work-holding and safety on most models.

sides and a set of spacers between the board and the jig walls to locate the groove.

### CLAMPING AND CUTTING

The new **Grr-rip Clamp** from Micro-Jig ([microjig.com](http://microjig.com)) is ideal for building jigs because it's designed to work in any 1/2", 14-degree dovetail groove. The clamping pad is 2-1/4" deep and there's 6-1/4" of travel. A large anti-mar pad protects workpieces from damage and holds odd shapes in two directions.

**TigerStop** ([shop.tigerstop.com](http://shop.tigerstop.com)) has a new online store for woodworkers looking for cutting guides. TigerStop's products push, pull and position material automatically for repeatable accuracy.

Kizen Enterprise ([kizenenterprise.com](http://kizenenterprise.com)) turns an ordinary miter saw into a precision production tool. The company makes a variety of fence packages and its newest product is the **Plastic Kizen Miter Fence**, a system for saws with siding factory fences. The fence is made from a marine-



The new Bow Master Tablesaw Pack from Infinity Tools offers infeed, hold-down and feather-board support.

grade plastic, and the system accepts Kizen's accessories, including a 45-degree insert that lets the saw cut some extreme angles that it normally can't handle safely.

Among the newer jigs and cutting guides from Woodpeckers ([woodpeck.com](http://woodpeck.com)) are the **Add-an-Inch**





**Block and the Compact Auxiliary Rip fence.** The Block clamps to a table saw fence and prevents the trapping of small parts between the blade and fence. It's an old idea, but Woodpeckers has added two features. First, the Block is exactly one inch thick, which lets the woodworker use the table saw's rip scale by just subtracting an inch from the reading. And second, it offers a couple of low-profile ways to clamp the



Milescraft's new HoldDown clamps (top) help make it easier to build jigs and guide cuts on saws and CNCs; Grizzly's set of jigs for corners comes with enough templates to form 12 different radii using a router table.

Block, so it never gets in the way. The other jig is an add-on fence for a band saw that now comes in a compact size for smaller and older saws. It adds a longer straightedge and more support before and after the table, plus it can be used on its side for a low profile. And in its vertical orientation, the fence and the clamping blocks add exactly two inches of width, which again makes for easier calculations during setups.

The new **Bow Master Table Saw Pack** from Infinity Tools ([infinitytools.com](http://infinitytools.com)) is a long auxiliary fence that clamps to the table saw's regular fence and accepts a number of attachments. Called the XT XTender Fence, it's 5" tall and attaches with

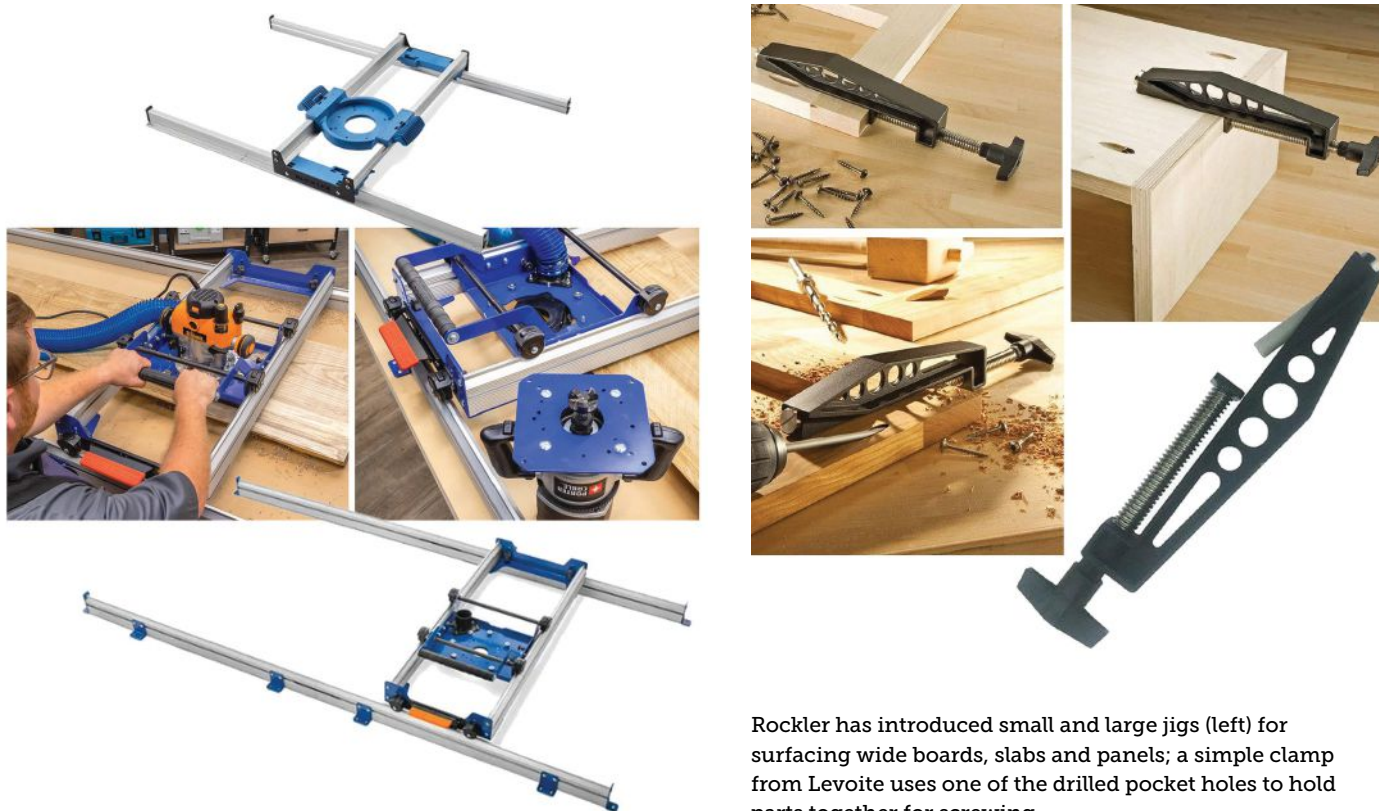
two T-track clamps. The attachments apply downward and inward pressure and feed support.

## HOLD-DOWNS & MORE

Some new clamps from Milescraft ([milescraft.com](http://milescraft.com)) may be of interest to CNC operators. The **HoldDown 200** is 5-1/4" long and holds parts up to 2-1/2" thick, while the 100 version is 3-1/8" long and handles stock up to 1-1/2" thick.

Both of these clamps have removable rubber tips, a triangulated geometry for maximum torque, a self-centering mechanism, a solid metal bar that won't flex, and a 1/2" x 20 T-bolt that works with almost any T-groove.






Rockler has introduced small and large jigs (left) for surfacing wide boards, slabs and panels; a simple clamp from Levoite uses one of the drilled pocket holes to hold parts together for screwing.


## BE A BETTER CRAFTSMAN WITH GREX® 23 GAUGE HEADLESS PINNERS

**CORDLESS** or **AIR**-powered; be a better craftsman with proven precision built GREX tools. When you choose a GREX, you're investing in a better built, longer lasting, more powerful tool with the best considered set of features and ergonomics. It's the same award-winning robust build quality users have trusted in GREX tools for 30 years.

And every new GREX pinner adds innovations that enable you to do more, easier and faster. GREX continues to lead the industry's innovation of 23 Gauge Pinner. Don't be fooled by look-alikes. The difference is in the details. Learn how GREX precision crafted tools just work better and longer for you.

### FIND YOUR DEALER

 888-447-3926

 866-633-7788

[www.grextools.com](http://www.grextools.com)



Celebrating with  
a new sale  
every month.  
Scan for details.

1995 - 2025

**30**  
YEARS

**GREX**  
USA®





**Grizzly Industrial** ([grizzly.com](http://grizzly.com)) has added a four-piece set of jigs for routing corner radii. The set (item T32712) includes three rubber-bottomed templates and a handle, and it's intended for use on a router table that's equipped with a flush trim bit. It's designed to create a corner with a radius between 1/8" and 2".

Grizzly also makes a production-grade jig for shaping cabinet door panels safely on a shaper, including arched panels. These heavy-duty jigs have pneumatic clamps to hold the work in place, and the various door style templates can be switched quickly and easily. The huge advantage is that they keep hands away from the cutters while providing excellent control. And beyond panels, they can be used for stile and rail joinery, finger joints and tenon forming. They will clamp parts up to 2" thick and, depending on the jig, up to 11-1/2" (T10460), 16" (T10462) or 24" (T10464) wide.

Most of the circular saw manufacturers have created guide systems that can be used to break down sheet goods in the shop or rip a thin strip on the jobsite. There's the **Bora Clamp Edge** ([boratool.com](http://boratool.com)); Kreg's **Rip-Cut** and **Accu-Cut**; the **Track Guide** from Skil ([skil.com](http://skil.com)); **SawGuide** from Milescraft; **Makita's** ([makitatools.com](http://makitatools.com)) Plunge Saw Guide Rail; **Wen's** ([wenproducts.com](http://wenproducts.com)) Track Saw Track Guide; Track and Plunge Saw System from **Bosch** ([boschtools.com](http://boschtools.com)); options from **True Trac** ([true-trac.com](http://true-trac.com)) and **Powertec** ([powertec-products.com](http://powertec-products.com)); **DeWalt's** ([dewalt.com](http://dewalt.com)) Track Saw Track; 31", 55" and 106" Guide Rails from **Milwaukee** ([milwaukeeetool.com](http://milwaukeeetool.com)), and guiderails, stops and accessories from **Festool** ([festoolusa.com](http://festoolusa.com)).

There are lots of other jigs and cutting guides on the market. But no matter how many new ideas come along, woodworkers seem to have a particular fondness for gadgets and widgets that help us get the job done right – while still reminding us that we get to play, as the world around us goes to work. **W**



Two fixed value miter cutting guides from Rockler (22-1/2 and 45 degrees) lend accuracy to segmented work.



## D405ANC 1-Axis Sliding Table Saw

**Stop walking around your saw with the programmable rip fence.**

Tired of walking around your saw? The Cantek D405ANC with a programmable rip fence offers high accuracy cutting of sheet material with maximum repeatability. Precision at your fingertips!



**POWERFUL | EFFORTLESS | VERSATILE | PRECISE**

Akhurst Machinery Group

[cantekamerica.com](http://cantekamerica.com)

# Cherry is ripe for picking

By Jennifer Hicks

**There's not much demand for cherry** (*prunus serotina*) at the wholesale level, since those that buy in bulk are specifying other species, according to suppliers interviewed by Woodshop News. That leaves more for the retailers.

"Every time we get cherry in, it moves. It's just not moving with the truckload and half truckload orders," says Chad Muterspaw of C.R. Muterspaw Lumber in Xenia, Ohio. "The big kitchen manufacturers aren't using it. But on the retail side and on the hobby end, guys still love cherry."

"We're not seeing as much of the figured stock like we used to. So that's been a little bit challenging. Since sales have been down, some [mills] haven't dried any cherry in maybe six months because they've got stock."

"Cherry, on the wholesale market, is down significantly, but there still seems to be consumer demand for it," says Lou Irion of Irion Lumber in Wellsboro, Pa., "and the more specialized material you have, rather than just run of the mill, the better chance you're going to have people interested."

"We've been doing quite well with cherry. We really push it. The price is down so the logs are really good. We're cutting beautiful wide sets. We can't find any other log that has that kind of yield. Because we're in cherry country and because we have access to such good logs, we've really focused on it. We have a lot of interest in our matched sets, wide lumber, and the figured cherry."

"On the veneer side, we're not seeing a whole lot with cherry," says Matt Gilland of Superior Veneer in East Aurora, N.Y. "We get the occasional request, but still oak and walnut are the two biggies. We've seen a little bit here and there for plain sliced cherry, but it's been pretty limited."

"It's a beautiful wood. I'd love to see more of it being utilized. Hopefully these trends change, and people start picking it up again." **W**



Woodshop News

14 JANUARY 2025 WOODSHOPNEWS

## Moisture Meters

Pinless, Pin and RH

Choose Lignomat for Reliability, Accuracy and Competitive Prices.

800-227-2105

[www.Lignomat.com](http://www.Lignomat.com)



Scan for info on D2-M package and other meters from Lignomat.



## Quality Control

High, low or uneven moisture is often a reason for imperfect wood products.

Package D2-M is a good choice. The mini-Ligno DX/C has a wide measuring range and multiple corrections for wood species and panel products.

Slide-hammer E12 detects moisture from surface to core up to 2" deep.







## Wendell Castle Workshop looks to expand in 2025

By Jennifer Hicks

**The Wendell Castle Workshop**, a fine woodworking school in Scottsville, N.Y., has expanded since opening in April 2024. It started with a class taught by former Castle employee and veneer expert Scott Grove and finished the first year with 15 classes. With so much momentum, the school's leaders have decided to add artist residencies.

"We had a total of 83 students in 2024. We had four sold-out classes and some classes with just a few students. We're encouraged by the excitement of our students working in the long-time studio of the master, Wendell Castle. It's a magical place. In addition to the classes, students have appreciated seeing Castle's work on display in our onsite gallery and getting a full tour of his studio," says interim director Ken Page.

"We've decided to add artist residencies from January through March and to only hold classes April through December. We have two bedrooms onsite, including what was originally Wendell and Nancy's bedroom. We plan to add a resident shop coordinator posi-

tion in 2025 coinciding with our class calendar."

Page adds that the residency position, which will be posted this month [January], will be given to a recent woodworking or art school graduate who has significant experience with typical woodworking shop equipment. Their responsibility will be to prepare class materials and be the assistant during classes. They will have full access to utilize the shop for their own projects and will be given a bedroom onsite and a stipend with access to kitchen and laundry facilities.

The school is part of the Wendell Castle Project (WCP), a nonprofit that celebrates the intersection of art, woodworking and furniture design by educating the public about Castle, teaching skills inspired by his work, and encouraging makers and designers to keep his legacy alive through their own practice.

The school's leaders also hope to start work on the Wendell Castle Archives this year, according to Page. Learn more at [wendellcastle.org](http://wendellcastle.org). **W**



KITCHEN CABINET  
MANUFACTURERS ASSOCIATION®

## KCMA opens Design Awards competition

By Jennifer Hicks

**The Kitchen Cabinet Manufacturers Association (KCMA)** is accepting entries for its 2025 Design Awards competition through the end of January.

"We're very excited about the kickoff of the 2025 KCMA Design Awards," Betsy Natz, CEO of the KCMA, said in a statement. "Beyond recognizing outstanding kitchen designs, the overarching goal of the program is to promote public interest in cabinet design excellence. Last year's competition, which marked the program's debut, was a success beyond all expectations. The competition will continue to focus on the quality of the cabinet environments within kitchens, while promoting the important role woodworking professionals play in the process."

"This competition is a great opportunity for design professionals to showcase their best designs, gain recognition among their peers, and build exposure for their work and firm. But it's not all about winning – it's also a way to spark community engagement by shining a spotlight on innovation, quality and originality."

The winner of the top award, Best Kitchen Design, earns a trip to the 2025 KCMA Spring Leadership Conference.

For entry details and prize information, visit [kcmadesignawards.com](http://kcmadesignawards.com). **W**

# Harbor Freight gives to trade educators

By Jennifer Hicks

**The Harbor Freight Tools** for Schools Prize for Teaching Excellence has awarded \$1.5 million in cash prizes to 25 teachers and their skilled trade programs in 19 states.

"We are thrilled to honor these 25 dedicated teachers who are making such an important difference in the lives of their students every day," Danny Corwin, executive director of Harbor Freight Tools for Schools, said in a statement.

"They have earned this prize be-

tural mechanics, advanced manufacturing, and industrial technology.

Eric Smidt, owner and founder of Harbor Freight, started the program in 2017.

To date, more than \$8.9 million has been awarded to over 150 teachers and their programs.

There were five grand prize winners, each receiving \$70,000 for their program and \$30,000 for the teacher. The remaining 20 winners received \$35,000 for their program

## HARBOR FREIGHT TOOLS FOR SCHOOLS®

cause they are highly knowledgeable about the skilled trades, have a deep belief in the potential of their students, and have built programs that prepare students for a multitude of opportunities after high school."

The winners teach a variety of trades, including construction, carpentry, welding, automotive, agricul-

and \$15,000 for the teacher.

There were more than 900 applications for the 2024 prizes. The process included three rounds of judging, each by an independent panel of experts from education, industry, nonprofits, and philanthropy.

For a list and descriptions of the winners, visit [hftforschools.org](http://hftforschools.org). **W**

### DURA SUPREME HOLDS ANNUAL KIDS SWITCH DAY

Dura Supreme Cabinetry recently celebrated its 32nd annual Kid's Switch Day with a record-sized class of 30 students. What started out as a Cub Scout project in the early 1990s, in November of 1992, is now a highly anticipated company event every year. Each year 5th graders who are children or grandchildren of a Dura Supreme employee have the opportunity to participate in the event, the company explained.

The day is filled with fun educational games, a factory tour of the Dura Supreme factory where they learn first-hand what their parents and grandparents do each day, discuss what it means to be a good employee, learn about manufacturing and cabinet making, movie time, and more. The day wraps up with a hands-on activity where each child gets to build their own cabinet to take home as a keepsake to remember their day at Dura Supreme.

"The kids appeared to thoroughly enjoy the day while learning about Dura Supreme and getting to see where their parents and grandparents work. It was evident many of the children had a sense of pride that their parent or grandparent worked here. This is a great event supporting community outreach and it represents the overall culture at Dura Supreme," said Karen Wistrom, Vice President of Marketing for Dura Supreme Cabinetry, in a statement.

Learn more at [durasupreme.com](http://durasupreme.com).

"Our new kitchen looks incredible... and we love how the cabinets started

**warping!"**  
Said No One Ever.

80% of all problems in wood projects are caused by moisture content issues. A quick and simple, non-damaging moisture meter reading can save you from angry customer calls, unnecessary repair time, and a bad reputation. Call today and learn why Wagner's industry-leading Orion meters may just be the most important tool for your shop.



(888) 266-8093  
[WagnerMeters.com](http://WagnerMeters.com)



# Oliver updates its benchtop planer

By Jennifer Hicks

**Oliver Machinery** presents a new 13" benchtop planer, model 10045, an update of the company's 12-1/2" model 10044.

The new model features two feed speeds, a wider planing head, and an HCX helical cutterhead with 36 knives.

"Oliver is trying to give the consumer the highest quality benchtop machines that are available in the marketplace because not everyone has room or floor space for a larger machine. Space is limited, that's the reality," says Mike Doremus, Oliver's general manager.

"This (10045) was updated from the 10044, and the differences between the two are pretty substantial. The previous version had a single speed gear box, so your speed rate was only one speed. This new model gives you a two-speed gear box which is nice because the slower you go, the better the finish. It also has our helical cutterhead for a smoother finish, which is easier on your motor and dust collection, and runs much more quietly."



The planer weighs 82 lbs. and has a 13" x 10.2" steel top. It features a 2-hp motor, producing a cutter speed of 10,000 rpm, and feed settings of 17 or 26 feet per minute. It can accommodate stock up to 6" thick and 13" wide, according to the company.

Additional standard features include digital readout, adjustable infeed and outfeed tables, carry handles, and fold-up extension wings.

The 10045 retails for approximately \$999.99. Learn more at [olivermachinery.net](http://olivermachinery.net). **W**

Courtesy of Oliver Machinery

# Machinery That Just Makes Sense

**This is it.**

Equipment that's thoughtfully designed for ease of operation, practicality, and affordable value. It stands above the rest. Discover why Pro Edge Technology is your best choice.

- Five-year warranty on the case clamp!
- Two-year warranty on other products!
- Top-notch service

Reach out to us today. You'll be glad you did!

**PROEDGE**  
TECHNOLOGY



[www.proedgetechnology.com](http://www.proedgetechnology.com) • 844-738-3343  
[info@proedgetechnology.com](mailto:info@proedgetechnology.com)

EDGE BANDERS

CNC BORE AND DOWEL INSERTION MACHINES

AUTOMATIC FEED-THROUGH CASE CLAMPS

# New Gemini Split-Bridge CNC from Machine Tool Camp

By Jennifer Hicks

**Machine Tool Camp** introduces the Gemini Split-Bridge nesting machine with left and right bridges, each containing a router spindle and multi-spindle drill unit. The result is two spindles/drill units cutting simultaneously on a fully nested sheet of material.

"The split bridge nester has two bridges that run, each one of them having its own XYZ capability, so they can each run independent programs simultaneously on one sheet of material," says Scott Kauphusman, president of Machine Tool Camp.

"The advantage is if you have 1,000 linear inches of travel, instead of covering it at a given speed with one spindle, you cover half of that, with each of two spindles, and therefore your cycle time is a lot less.

"So you get double throughput for machine that costs about 40 to 50 percent more than a traditional CNC router, depending on options and configuration, and that doesn't



include advantages you get with automatic loading and unloading."

Standard features also include a 5'x10' vacuum table; 13-hp, 18,000 rpm, 3-axis spindle; dual eight-pocket automatic tool changers; part location rails and pins; 3,400 CFM vacuum system, and more.

Learn more about pricing and optional features at [machinetoolcamp.com](http://machinetoolcamp.com). **W**

# Snappy Tools puts a new twist on countersinks

By Jennifer Hicks

**Make it Snappy Tools** introduced its series of iCARB Indexable Carbide Countersinks at the 2024 IWF in August and won a Challenger's Award for innovation.

The series features solid carbide cutters that can be indexed to a fresh edge and replaced when necessary, a design that enhances tool performance and longevity, the company says.

"With this indexable carbide countersink, you have a solid carbide insert that's double sided. You can remove it with a screw, turn it around 180 degrees, and you have a fresh cutting edge again. It's also replaceable if you use up both sides of

the insert," says product manager Tim Quiring.

"This is the first of its kind on a small scale like this. Typically, what you find is a brazed insert that's one and done. So, once you use it up, you have to discard the entire bit."

The tool's wear resistance makes it perfect for use in the toughest and hardest of hardwoods and other abrasive materials, the company said.

The series includes four countersinks with a 1/2" counterbore size and twist drill sizes of 7/64", 1/8", 9/64" and 5/32". They sell for \$39.99 a piece.

Learn more at [snappytools.com](http://snappytools.com). **W**



The iCARB features a double-sided carbide insert.



# Laguna debuts KX/24 CNC

By Jennifer Hicks

**Laguna Tools** introduces its new KX/24 CNC router, an entry-level machine with a 15.1" touchscreen display, 1-hp electro spindle, and 2' x 4' work area.

The compact machine is built to deliver precision and user-friendly features, according to the company.

"We know that CNC machines can feel overwhelming for newcomers," said Austin Buck, sales manager for Laguna, in a statement. "That's why the KX/24 has been thoughtfully engineered to provide the perfect balance of power and simplicity. With a powerful electro spindle, integrated T-slots and user-friendly controls, the KX/24 is ideal for anyone looking to start CNC machining or expand their hobbyist workshop."

The touchscreen display eliminates the need for an external computer, while the spindle offers up to 24,000 rpm for handling a variety of materials such as wood, plastic and non-ferrous metals, the company said.

Other features include prismatic linear guides and ball screws; dual drive Y-axis and 24-volt high-torque stepper



motors; auto tool touch-off, and MDF spoil board.

Optional accessories include a machine stand and tool-box, overarm dust collection, magnetic dust shoe, hold-down clamps, and an LED light kit.

The KX/24 starts at \$5,999. Learn more at [lagunatools.com](http://lagunatools.com). **W**

## Schmidt Tooling For Shapers, Moulders, Tenoners, CNC Routers, Saws, Haunchers & Planers

### Standard & Custom

**Charles G.G. Schmidt & Co., Inc.**  
301 West Grand Ave., Montvale, NJ 07645 [www.cggschmidt.com](http://www.cggschmidt.com)  
Call: 1 800 SCHMIDT or Email: [sales@cggschmidt.com](mailto:sales@cggschmidt.com)  
for information or for your free Catalog  
Accessories, Grinding Room Supplies, Machinery and more Since 1926

# Just the facts on vacs

By John English

**It's easy to get mired in detail** when thinking about dust collection. And while microns and static pressure have their place, they're not the primary considerations. The type of machine, the power of the motor, and the style of ductwork are more relevant, so let's start with a look at the different kinds of small-shop machines.

The four choices are a shop vacuum, single-stage collector, two-stage collector, and a cyclone. A good rule of thumb is that shop vacuums serve portable power tools and dust collectors handle debris from stationary machines.

Shop vacuums can be quite loud and usually don't have much of a filtering system for fines (although that's changing), but they're generally inexpensive and always portable. These are high-velocity, low-volume machines, so they need to have a very small diameter hose to keep dust and debris in suspension. If the speed of the air in a pipe slows down, the particles in the stream can drop. So, a shop vacuum sucks a small amount of air at high speed. That makes them ideal for jobsite work, especially when they can be connected directly to tools such as sanders and routers.

A single-stage collector sucks debris from a machine into a chamber where the fan is housed and then sends it down into a collection bag. After the larger particles and chips drop out, the remaining air is pushed through a filter bag and scrubbed of fines before being returned to the shop. Some single-stage collectors only have one bag that works for both waste and filtering. As it fills up, there is less and less filtering material available, so the efficiency can drop significantly. Some single-stage units have a plastic bag below and a fabric bag above, where the plastic catches waste and the fabric is the filter. Units with two fabric bags (one top, one bottom) may offer more filter area, but again the lower bag fills quickly so it probably doesn't offer a lot of advantage over plastic. On the other hand, plastic ductwork and bags tend to store static electricity, which is never a great idea around fine dust. Some of the more powerful single-stage collectors can have two collection bags below and either two filter bags or two canisters up top.

The biggest advantage of moving up to a two-stage collector is that it will remove the larger debris before it reaches the impeller (fan). A two-stage basically diverts the airflow so that the chips never hit the fan. The simplest and least expensive two-stage is an aftermarket plastic hood that directs the airflow through a garbage bin before it gets to the collector. Some larger two-stage collectors offer drums that use plastic liners, which can make it easier to clean them out.



This 230-volt, wall-mounted, 3-hp cyclone from Oneida Air Systems has a HEPA cartridge filter.

Moving up to a two-stage cyclone collector adds another wrinkle. The funnel-shaped cyclone spins the air around until it slows down enough for the larger particles to fall out of the suspension stream. Cyclones are widely accepted as the best option because no large parts ever reach the vanes on the impeller. But be aware that this style of collector can cause a significant drop in airspeed in the ductwork – up to a third, in some cases. So, you'll need a bigger cyclone (in terms of CFM or horsepower) to get the same results as a standard two-stage. And where you place it makes a difference, too. Sanders make fine dust,



while jointers and planers make chips. So, it's a good idea to locate the dust collector closer to the chipmakers as large particles will have less distance to travel.

Deciding which type of collector to buy isn't just about performance. Sometimes, it's about space. These units can be quite large and cumbersome, and some of the cyclone collectors can be quite tall. Putting a collector on a platform above other machines or suspending it from the rafters are options for shops with high ceilings. Locating the collector in another room can reduce sound but locating it outdoors can be problematic. There may be issues with freezing, or zoning rules about noise. And venting outside doesn't make much sense for woodshops that have to pay



The single-stage G0548ZP canister collector from Grizzly Industrial moves 1,700 CFM with an aluminum impellor.

# THE KLINGSPOR TRIFECTA OF DUST EXTRACTION

## Hole Pattern, Abrasive Material & Backing.

In today's wood shop, the design and construction of each workpiece are key. Equally important are the sanding and finishing processes, including dust extraction.

Removing the waste material from the sanding process can leave you with a cleaner, more refined scratch pattern that is conducive to a smooth, even finish.

No matter which KLINGSPOR sandpaper product you're using, the vacuum holes in the sanding discs or sheets for your process must also be considered. We manufacture discs and sheets required for just about any sander brand and hole configuration. Simply select the vacuum hole pattern, the type of abrasive mineral, and the backing, and we'll find a solution for almost any application. Of course, the hole size and pattern will depend on the type of backing pad on your sander. Some require only four holes, while others can utilize discs with forty-four or more holes.

Contact us with your specific dust extraction and application requirements at 1-800-645-5555 or speak with your local factory sales representative today!



Call today to speak with one of our technical advisors for details on which sandpaper is best for your application.

– Nick, Technical Advisor



# KLINGSPOR

The Most Sanding Power for Your Money Since 1893!

800-645-5555 • [www.klingspor.com](http://www.klingspor.com)



Midaco's model M264V industrial vacuum's three motors can create up to 250 mBar of vacuum.



The Stealthsonic shop vacuum from DeWalt.



Nordfab supplies automated blast gates that open when a machine is turned on.



The B|Flux single-stage collector from Laguna Tools.



ROCKLER

Rockler makes an optional filter for its Dust Right system that places a clear bag below the canister.

to heat or cool the air in the shop, if their dust collector continuously exhausts the treated air. These are all elements best considered before the collector is purchased.

### FILTER FACTS

Everyone has heard of HEPA, but many woodworkers don't know exactly what it means. The acronym stands for High Efficiency Particulate Air, and the efficiency refers to this type of filter's ability to capture up to 99.7 percent of all airborne particles that measure 0.3 microns or less. The symbol for a micron is  $\mu\text{m}$ , and a micron is 1/1000 of a meter in diameter. That's about 1/25000". HEPA is important because fine dust presents the most potential for woodworkers developing nasal cancer or pulmonary problems such as chronic obstructive pulmonary disease (COPD) after years of exposure.

There's a harsh reality here – filters can be too fine. If the weave is too tight, contaminated air can't escape because the fines it carries will continuously clog the holes. So, there is a trade-off. As the weave tightens, the collector will require more filtering area (bigger bags).

A canister filter is preferable to a fabric filter, if for no other reason than it's easier to clean the caking from the inside walls. Turning the handle on the top of a canister beats whacking a fabric bag with a broom handle. By the way, a broom handle will be more efficient when the collector is turned off. If the collector is running, the inflated bag doesn't have much give, and the air pressure is still pushing through. Both of those factors make it harder for the cake to release and fall. Cartridges are efficient and effective for collecting fines, because their accordion design offers more square inches of filtration material. It also





On Rikon's two-stage 60-2500, large debris drops into the drum before fines are sent to the canister.

makes them smaller, which means they can often fit where a bag won't. Bags are preferred in larger shops where high volumes of dust are captured, but small- and medium-sized shops seem to prefer cartridges.

Once the collector and the filter have been chosen, it's time to match them to ductwork. Here's another quagmire, where woodworkers need to choose between metal or plastic, rigid or flexible, ribbed or spiral, stainless steel or galvanized, and so on. Suppliers such as Air Handling Systems ([airhand.com](http://airhand.com)) will not only address these issues but can help design a system that takes the most advantage of the collector's power, the machine locations, and the geographical location of the shop (where heat, cold and humidity can be factors). The company has also developed an online guide to designing your own air handling system. On the Support page, scroll down a little bit and click on the guides for designing and installing ductwork.

## VOLUME AND VELOCITY

Airflow is measured in cubic feet per minute (CFM). That's pretty self-explanatory, but it can be misleading. CFM at the collector can be a much higher reading than across the shop, after the air travels through several



The portable Shop-Vac 2-gallon wet/dry vacuum runs on a 2.0 Ah battery.

**LOBO Castaly**

The Logical, Reliable, & Affordable Solution!

**CNC 3 Spindles Machine Center**

CNC-83-DU  
Start at **\$58,990.00**

**Feed Through Ares CNC Machine Center**

- Three-Dimensional Wood Processing
- Cupboard Doors
- Wooden Doors
- Window Processing
- Video Game Cabinets
- Door Lite Cutting
- Steel Door Processing

Start at **\$79,990.00**

**Special Offer!**

**Moulder**

1. SM-166D 6" 6 HEADS **\$34,990.00**
2. SM-236D 9" 6 HEADS **\$52,990.00**

**CNC Router**

1. BASIC404C (4' x 4') **\$9,690.00**
2. BASIC408C (4' x 8') **\$12,990.00**
3. BASIC510C (5' x 10') **\$15,290.00**

**Two Side Planer**

1. PL-12S 12" Spiral Heads **\$17,990.00**
2. PL-24S 24" Spiral Heads **\$33,990.00**

**Dovetail Machine**

1. CM-A19 SEMI AUTO **\$10,690.00**
2. CM-600 CNC PROGRAM **\$22,690.00**

**Wide Belt Sander**

1. WS-A2560 25"x60" **\$11,990.00**
2. WS-A3775 37"x75" **\$20,990.00**
3. WS-DA3760 37"x60" **\$25,990.00** (Two Heads)

**Raised Panel Door Shaper**

1. CS-40PAME 40" Manual Sliding **\$22,990.00**
2. CS-55PAME 55" Manual Sliding **\$24,990.00**
3. CS-55PAAU 55" Automatic Sliding **\$30,990.00**

**Feed Through End Match**

SFJ-300A 12" Automatic Cycle **\$48,990.00**

**Boring Machine**

BR-2132 21 Bits Vertical-Horizontal Boring **\$5,990.00**

**Cut-Off Saw**

1. CS-18L 18" Cut-Off Saw **\$6,390.00**
2. CFS-100 Semi-Optimizing Defect Cut off Saw **\$50,990.00**

**WWW.CASTALY MACHINE.COM**

USA: +1.626.968.6330  
637 Vineland Ave.  
La Puente, CA 91746  
Email: [info@castalymachine.com](mailto:info@castalymachine.com)

Canada: +1.579.420.1794  
956 Rue André-Liné  
Granby QC J2J 1E2



Nederman's 300 E.

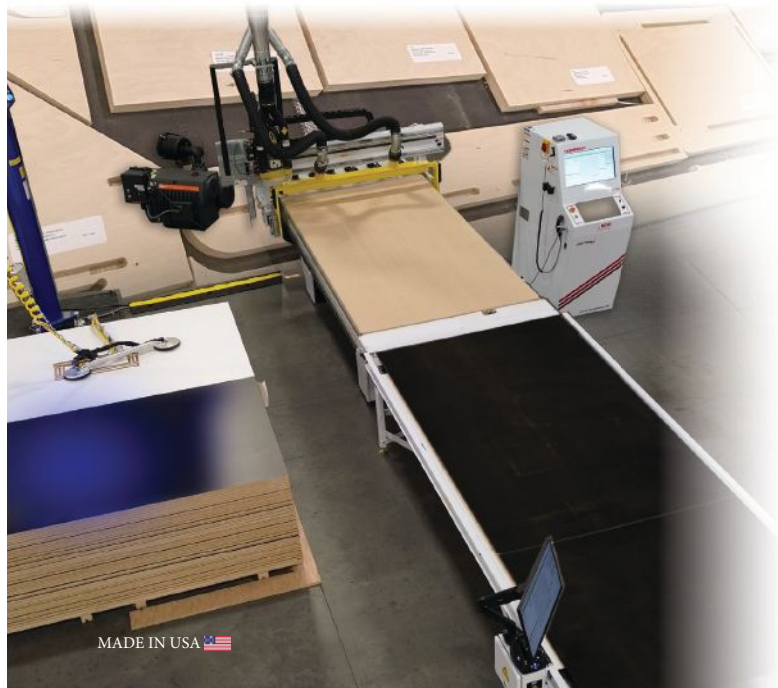
curves, ribbed hoses and blast gates. The collector's manufacturer will measure CFM at the machine's intake, but a woodworker needs to know how things are doing at the farthest point of the system. A hand-held anemometer can cost as little as \$30 and while it may not calculate the cubic volume, it will certainly measure the velocity of the airflow in feet per minute. That makes it easy to determine where the problems are in a system.

The volume of air and its speed depend on the strength of the vacuum being produced by the fan, and that's measured in terms of static pressure (SP). Well, SP actually measures resistance, not strength. If the vacuum is weak, one way to address that is to increase the static pressure. One of the traditional ways of explaining static pressure is to compare it to a gardener watering his roses. He wants to reach the flowers at the back of the bed, so he puts his thumb across part of the aperture in the hose. Less water gets through, but it travels farther. If the 6" diameter ductwork on a collector is compressed into a 4" duct, the pressure and the airflow speed will increase. Reduce the diameter too much, and you'll put undue strain on the fan: it will be working too hard. So, finding the right level is important, and there's an excellent guide to this on the Oneida website.

The ductwork is as important as the collector, and systems such as Nordfab's Quick-Fit (QF) duct clamps together in seconds without welds, bolts, screws, flanges, special tools or specialized skills. Options here include automatic energy-saving blast gates that kick in when a machine is turned on.

## CabinetShop 43 Nested Based Work Cell

Complete nested-based CNC routing system with smart-router technology, automatic off-load conveyor table system with remote monitor and labeler station. Designed for custom cabinet, closet, and furniture builders.



MADE IN USA

### Key Features:

- ▶ 13 HP HSD Spindle (3,000-24,000 RPM)
- ▶ 5'x8' table (on 5' x 10' base) with 21 tooling positions & dual pipe dust collection
- ▶ 5'x10' table (on 5'x12' base) with 21 tooling positions & dual pipe dust collection
- ▶ Manual Lift System with automatic sequence light sheet locator system
- ▶ Powered Out-Feed Conveyor (61" x 144")
- ▶ Remote Fully Functional Operator Station with Monitor and Label Printer
- ▶ Control Nesting for Better Yield
- ▶ Lifetime Machine Support from Thermwood's Legendary Service and Support



Drawers



Cabinets



Doors



Closets and More!



Scan QR Code for more information and videos.

## THERMWOOD

[www.thermwood.com](http://www.thermwood.com)

800-533-6901



Many woodworkers depend on horsepower rating to decide which unit to buy, and that's a legitimate choice. A more scientific method is to gather up all the manuals for all the dust-making machines in the shop and design a system based on their combined CFM ratings. That in turn will tell you how much horsepower you need to generate enough CFM.

Metal impellers have been replaced somewhat by plastic ones, and that's not all bad. Plastic can accumulate static, but the impeller is grounded so it's not a problem. If the collector picks up some metal (small screws, nails) along with the wood dust, metal vanes on a fan might cause a spark. Unlikely, but possible.

Noise is an element of the buying decision. Collectors often use quieter DC motors while shop vacuums run on louder AC power. Plus, the faster a motor spins, the louder it gets. Shop vacuums have small fans that need to spin fast to generate airflow. Dust collectors have larger impellers that rely as much on torque as speed. There are some shop vacuum noise suppression devices, sometimes referred to as silencers or mufflers, that pop into the exhaust hole and they can cut the decibels a bit.

Some collectors come with variable speed, remote control, paired apps and other electronics, all of which have different value for different buyers. The ability of a collector to turn on and off when a tool is activated is a valuable attribute.

If you have a collector with a steel frame where emptying the bottom bag is a pain in the elbow, invest in a few rare earth magnets. They'll hold that slippery sucker in



Design help from a supplier such as Air Handling Systems often introduces new components.

place like a second pair of hands until you get the retaining band located and secured.

Anyone designing a dust collection system should stop by Bill Pentz's website ([billpentz.com](http://billpentz.com)). The man is a font of knowledge.

And the final word on dust collection? If you're sanding, wear a mask. **W**

# MIDWEST Tool Expo & Auction

in conjunction  
with the  
**MIDWEST  
Health & Wellness  
EXPO**

## January 23, 24 & 25, 2025

Thursday 11-7, Friday 8-5 & Saturday 8-1

**LOCATED IN THE MEC**

455 E Farver St, Shipshewana, IN 46565

**EXPO:** Ervin Miller • 260.768.3033 • Fax: 260.768.3133  
Midwesttoolexpo@outlook.com

**AUCTION:** Robert Mishler • 260.336.9750  
Robert@schraderauction.com • Lic #AU8701553

[midwesttoolexpo.com](http://midwesttoolexpo.com) | [midwesthealthwellness.com](http://midwesthealthwellness.com)

**\$25,000 giveaway with \$5,000 cash given away on Thursday, January 23<sup>rd</sup> • Free Seminars**

Sponsored  
By:



**3 DAY SHOW!**



# Woodshops are not immune to cyberattacks

By George Thuo

**Data breaches and cyberattacks** are one of those things small- to medium-sized manufacturers think won't happen to them. Yet, according to the Verizon 2023 Data Breach Investigations Report, 43 percent of all cyberattacks are conducted against small businesses. If that doesn't grab your attention, consider this fact: manufacturing ranked fourth in the number of cyberattacks by industry, topped only by the public administration, information and finance industries.

Cybercriminals understand the vulnerability of manufacturers and target their businesses accordingly. In many cases, penetrating a manufacturer's security proves to be less of a challenge than larger companies. If hackers fail to penetrate a targeted manufacturer, they typically move on to the next small manufacturing business that has its guard down.

Cyberattacks are a malicious disruption of a company's systems and/or network. Hackers use harmful code to compromise your computer system so they can steal or hold your data hostage.

The type of attack deployed depends on what the hacker is seeking. For example, identity theft, fraud and extortion attacks seek money, but often the hacker is looking for sensitive data that could lead to more successful data breaches and a higher financial return.

## HOW TO PROTECT YOUR SHOP

No defense is perfect, but implementing these 12 steps can significantly reduce the odds that hackers will be able to penetrate your data and systems.

**1. Employee awareness and training** - Cyber hackers frequently send phony emails expecting some unaware user will take the bait. These often seem legitimate

to untrained employees, making it easy to fall into the hacker's trap. Train your employees to always:

- Check links before clicking them
- Check email addresses from received emails
- Use common sense before sending sensitive information
- If an email request seems odd or suspicious, call the person and verify the source and the request

**2. Use patch management** - Cybercriminals are professionals at exploiting system weaknesses to gain access to your network. Patch management is a process of applying updates to software, drivers, and firmware to protect against vulnerabilities. Designed to manage all your software and system updates, patch management also boosts productivity by ensuring optimal operating performance of your systems.

**3. Protect all your endpoints** - Endpoints consist of desktop computers, mobile devices, servers, embedded devices, and other physical devices that connect to and exchange information with a computer network. They also provide access paths to security threats but can be protected with endpoint protection software and anti-virus programs running on all computer systems.

**4. Build a firewall** - With so many sophisticated data breaching techniques, protecting your network with a firewall is essential. A computer network security system that restricts internet traffic within a private network, a firewall provides a highly effective defense against cyberattacks.

**5. Use of two factor authentication** - Two-factor authentication (2FA) is an identity and access man-

agement security method that requires two forms of identification to access data and resources. Enforce it on email and other commonly accessed applications.

**6. Perform penetration testing on systems** - Engage an independent cybersecurity company to perform yearly penetration testing on all internal systems to identify vulnerabilities or points that need better protection.

**7. Back up your data in remote locations** - Data hacks of full backups can result in significant down time, loss of data and devastating financial loss. Back up your data on a regular basis and store it in different locations in case your onsite backups are compromised.

**8. Control physical access to your systems** - Without a reliable perimeter security system someone could walk into your facility and infect your file or gain access to your entire network by inserting a hardware key that identifies an authorized user. Be very careful about who has access to your systems and how they get in.

**9. Don't overlook Wi-Fi security** - With thousands of Wi-Fi enabled devices in the world, the risk is any device can get infected by connecting to a network. An infected device that gets connected to your business network puts your entire system at risk. Securing your Wi-Fi networks is a vital safety feature for your systems.

**10. Use separate personal login accounts for all employees** - Every employee needs their own login for every application and program they use. Ensuring every staff member has separate logins helps reduce the number of potential attacks. Users should log in only once a day with their own personal set of logins.

**11. Have strict access management** - Allowing employees to install software on business owned devices could compromise your systems. Reduce risk by using managed administrative rights to prevent your staff from installing or even accessing certain data on your network.



**12. Use a different password setup for each application** - Never assign the same password setup for different applications. Otherwise, if hackers discover the password, it could provide access to any application you use. Using different password setups and changing them often will sustain high protection levels against external and internal threats. This can be made easier by using a password manager program.

### MINIMIZING THE DAMAGE

Keeping cyberattack damage to a minimum requires quick response with a plan of action worked out in advance. Be prepared to implement these six steps as soon as possible.

**1. Identify the attack** - Identifying the type of attack will help you determine its severity, and the measures needed to mitigate the damage. Some common types

of cyberattacks include ransomware, phishing, denial of service, and malware.

- 2. Isolate the affected systems** - Once you've identified the type of attack, disconnect the affected systems from the internet and your internal network to prevent the attack from spreading to other systems in your network. Complex networks may require more sophisticated isolation measures.
- 3. Contain the attack** - Determine the scope of the attack by identifying the systems and data that have been compromised. Identify any vulnerabilities that may have been exploited to carry out the attack.
- 4. Notify internal and external affected parties** - These include your senior management, IT department, and third-party vendors or service providers that may be affected. Contact law enforce-

ment officials if evidence of criminal activity exists.

- 5. Recover and restore your systems and data** - Use backups to bring systems and applications up to date with the latest security patches. Conduct a comprehensive review of your security policies and procedures to identify weak points in your security infrastructure.
- 6. Learn from the attack** - The final step involves researching and analyzing the attack to uncover any gaps in your security technology and procedures. Provide all employees with hands-on training for recognizing and responding to cyberattacks. Bring your systems and data back up as quickly as possible while minimizing the damage in the process. **W**

*George Thuo is the Director of Cloud ERP for Global Shop Solutions.*







# XTREME PERFORMANCE

COMPRESSION SPIRALS

## XP Tools Boost Production And Reduce Downtime And Waste

- Engineered For Cutting HPL/Melamine On Particle Board And MDF Core
- 3-5 **X** More Tool Life Compared To Standard Compression AND Coated Tools
- Precise, Clean Cuts By Design

5605 East Jelinek Avenue • Schofield, WI 54476  
1-800-355-7708 • fax 715-355-7353 • [WWW.VORTEXTOOL.COM](http://WWW.VORTEXTOOL.COM)



INSERTS / CUSTOM TOOLING / ACCESSORIES / SHARPENING / ROUTER BITS

# EVERYTHING

*for the Woodshop*



# *grizzly.com*®

## **800-523-4777 #GRIZZLYTOOLS**



FINANCING AVAILABLE



Please visit [grizzly.com](http://grizzly.com) for up-to-date pricing.

Due to rapidly changing market conditions, our advertised prices may be changed at any time without prior notice.

**⚠ WARNING! †: Cancer & Reproductive Harm**

Some products we sell can expose you to chemicals known to the State of California to cause cancer and/or birth defects or other reproductive harm. For more information go to [www.P65Warnings.ca.gov](http://www.P65Warnings.ca.gov)



**Purveyors of Fine  
Machinery® Since 1983**

# Grizzly Industrial®

**Quality Machines,  
Buy Direct & Save**

## 10" 5 HP 240V Cabinet Table Saw Ultimate cutting efficiency

- 60" Rip capacity
- Extra-large 44" x 27" extension table
- Shop Fox® Classic Fence
- Cast-iron trunnions and internals
- All sealed ball-bearing construction
- Cabinet footprint: 20½" x 20½"
- Shipping weight: ≈ 558 lbs.



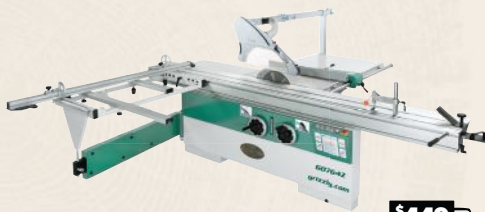
MADE IN AN ISO 9001 FACTORY C 177335 US

**G1023RLX5 ONLY \$2850**

**\$329**  
FREIGHT  
(POWER & DUTY)

## 14" 10 HP 3-Phase Sliding Table Saw With 124" Cutting Capacity

- Micro-adjustable rip fence
- Alloy crosscut fence for miter cutting 45° R & L
- Independent scoring motor
- 3 blade speeds from 3000-5000 RPM
- Table size: 39¼" W x 59½" D
- Footprint required: 279" x 203"
- Shipping weight: ≈ 1643 lbs.



**G0764Z ONLY \$10,995**

**\$449**  
FREIGHT  
(POWER & DUTY)

## 8" x 83" 3 HP Parallelogram Jointer Effortless table adjustments for accurate results

- 4-Row helical cutterhead with 36 indexable carbide inserts
- Parallelogram table adjustment
- Digital readout for infeed table height
- Heavy-duty center-mounted fence
- Fence stops at 45°, 90°, and 135°
- Footprint: 46" x 18"
- Shipping weight: ≈ 730 lbs.



MADE IN AN ISO 9001 FACTORY C 177370 US

**SB1091 ONLY \$3395**

**\$329**  
FREIGHT  
(POWER & DUTY)

## 20" 5 HP Helical Cutterhead Planer Industrial-strength performance

- 4-Row helical cutterhead with 92 indexable carbide inserts
- 5000 RPM cutterhead speed
- 16 & 28 FPM feed rates
- Precision-ground cast-iron table
- Adjustable bed rollers
- Footprint: 22" x 28"
- Shipping weight: ≈ 909 lbs.



MADE IN AN ISO 9001 FACTORY C 177370 US

**G1033X ONLY \$4195**

**\$369**  
FREIGHT  
(POWER & DUTY)

## 25" 15 HP 3-Phase Planer Engineered for power and precision

- 6-Row helical cutterhead with 174 indexable carbide inserts
- Digitally controlled table elevation
- 3-Speed feed rate
- Precision-ground cast-iron table
- Inch/metric readout
- Footprint: 47¼" x 22"
- Shipping weight: ≈ 2054 lbs.



MADE IN AN ISO 9001 FACTORY C 177335 US

**G0603X ONLY \$12,995**

**\$599**  
FREIGHT  
(POWER & DUTY)

## 17" 2 HP Bandsaw w/ Cast-Iron Trunnion Our best-selling 2 HP bandsaw

- 16¼" Left-cutting capacity
- 12" Resaw capacity
- Blade speeds: 1700, 3500 FPM
- Oversized cast-iron table
- 5° Left to 45° right table tilt
- Footprint: 27" x 18"
- Shipping weight: ≈ 421 lbs.



MADE IN AN ISO 9001 FACTORY C 181721 US

**G0513X2 ONLY \$2095**

**\$249**  
FREIGHT  
(POWER & DUTY)

## 5 HP Deluxe Spindle Shaper Two spindles for versatility

- Four spindle openings from 2½" to 7"
- Independent micro-adjustable fence
- DRO for height positioning
- Dual 4" dust ports
- 3 speeds: 5000, 7000, 10,000 RPM
- Footprint: 23½" x 25½"
- Shipping weight: ≈ 812 lbs.



MADE IN AN ISO 9001 FACTORY C 177370 US

**G0900 ONLY \$3995**

**\$369**  
FREIGHT  
(POWER & DUTY)

## 37" 10 HP Drum Sander Cut sanding time in half

- Dual 6" sanding drums
- Variable-speed conveyor
- Industrial-duty rubber conveyor belt
- Easy access control panel with load meter
- Computer-balanced drums
- Footprint: 45½" x 28½"
- Shipping weight: ≈ 1406 lbs.



MADE IN AN ISO 9001 FACTORY C 177335 US

**G0449 ONLY \$6450**

**\$449**  
FREIGHT  
(POWER & DUTY)

## 3 HP Cyclone Dust Collector Dual-filtration dust collection

- 360° Blower rotation
- BIA-certified cartridge filter
- 0.2-2 Micron filtration
- 55-Gallon collection capacity
- Brush cleaning mechanism
- Footprint: 32⅞" x 32⅞"
- Shipping weight: ≈ 400 lbs.



MADE IN AN ISO 9001 FACTORY C 201825 US

**G0441 ONLY \$2595**

**\$249**  
FREIGHT  
(POWER & DUTY)





Terry Fasnacht in the  
shop's showroom.





# PRESERVING THE FUTURE

Terry Fasnacht ponders the next chapter of  
Conestoga Valley Custom Kitchens

By Jennifer Hicks

Conestoga Valley Custom Kitchens in Narvon, Pa., is a turnkey shop that produces custom cabinetry for the residential market in the state's southeastern region. Established in 1974, the company was restructured in the early 90's when current owner Terry Fasnacht purchased it from the founders. A seasoned woodworker and businessman, Fasnacht helped get the business out of financial straits and find its 'sweet spot'.

"We've mainly, over a 10 to 15-year period, developed good relationships with architects within the Philadelphia area through a handful of remodeling contractors and interior de-

signers. Developing those relationships automatically grew us," says Fasnacht.

His team of 12 to 14 employees works in a 15,000-sq.-ft. former dairy barn on three acres of land. There's room to expand, but Fasnacht likes the scope of the current operation.

"Now I'm selective because I want to be this size. I don't want to be bigger. So, I do turn down work because if I grow much more, I have to add to a layer of management. We have the ability to run 30 to 40 percent more work through this shop because of its size and the equipment we have, but I don't want to do that."



Two views of an elaborate kitchen from the shop's extensive project portfolio.

## A STARTUP & ACQUISITION

Fasnacht grew up in the nearby town of Ephrata and has lived in the area his entire life. He aspired to be a furniture and cabinet maker in his formative years and sought training options through his high school curriculum.

"Back in the 70's they started the vo-tech schools and I spent three years doing half-days at the Brownstown program for cabinetmaking," he says.

In 1972, Fasnacht went to work for Conestoga Wood Specialties, a producer of cabinetry components, where he refined his woodworking skills and advanced to upper management before starting his own company.

"I worked for Conestoga Wood Specialties for 19 years, and when I left, I was in the executive group running the company," he says. "I started B&T Cabinet and Millwork. I actually started that in '86, before I left Conestoga, and when I bought Conestoga Valley Custom Kitchens, I rolled that into [B&T] and shut it down. By buying this, I got into a market where the customers wanted more high-end products. We're a middle to high-end company. By getting into that market, I was able to do more designing and just nicer projects."

"When I purchased it, we grew. I actually had less employees than they had when we got restarted, but I tripled the volume. It had been in bad shape financially."





## ADDING SERVICES

Fasnacht essentially had to start from scratch with getting the large business back on its feet. Right away, he hired design experts with the hopes of appealing to a new high-end clientele.

"My oldest designer was here from the beginning. He's 80 and he still does some projects. But my other two, I purposely looked for designers that had college degrees in interior design. I wanted that because the way we retail, they understand whole projects. If we're just doing cabinets, they can still put insight into the rest of the project, and I wanted that ability that the client felt we really understood what was going on with the whole project."

This approach also allowed Fasnacht to offer general contracting services to customers. The jobs run the gamut of home remodeling tasks.

"About 90 percent of my cabinetry goes into remodeling, and 10 percent into new homes. But we have, I'll call it a remodeling branch, and 20 percent of those projects we're taking from design to completion. We'll replace the walls, flooring, plumbing, electric... We do the whole nuts and bolts.

"That's why I wanted people with interior design skills. My designers, if we're doing a complete project, they'll take them to Fergusons (a local supplier) to pick out all the plumbing fixtures. We'll hand-hold them the whole way through the job."



# Transform Your Shop, Simplify Your Workflow!

*Say goodbye to wasted time, costly errors, and limited flexibility. With Cabinet Pro, you'll gain:*

- ✓ Shop Drawings & 3D Renderings
- ✓ CNC Integration
- ✓ Unlimited Cutlists & Reports
- ✓ Purchase or Rent-to-Own
- ✓ Expert Tech Support

*Schedule your demo today!*

**www.cabinetpro.com**  
**(702) 330-0775**





The shop takes on any style, from traditional to contemporary.

### MARKET FOCUSED

Fasnacht says his focus has always been residential. Established relationships with architects draw in most jobs, but direct calls from homeowners are welcomed.

"We mostly serve Downingtown, Philadelphia, the Main Line area, and some shore homes because a lot of people we do work for in the Main Line have shore places. We do a lot of Jersey Shore houses, usually one or two a year. But if somebody just wants a vanity, we'll do that, too."

A broad spectrum of design styles from traditional to contemporary are offered, along with an extensive selection of finishes, door styles, moldings, hardware and edge treatments. The company showroom displays various design lines.

"We do a lot of Shaker. I'll call it Shaker/European because we do

## SANDMAN Products

*Sanding Tables, Sanding Booths, & Inspection Lighting*

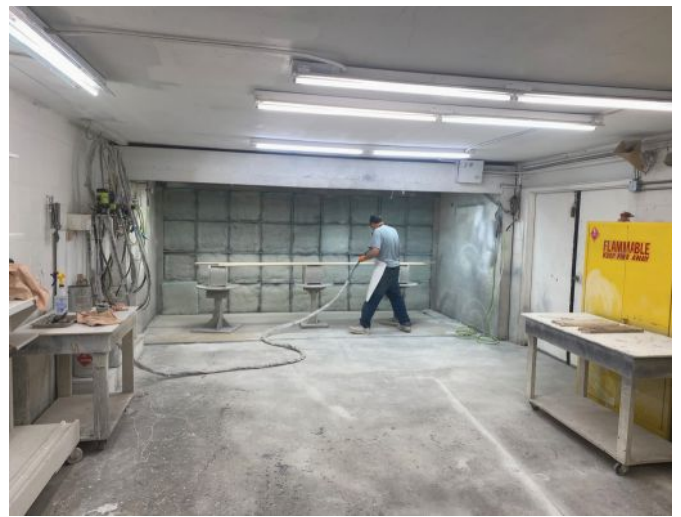
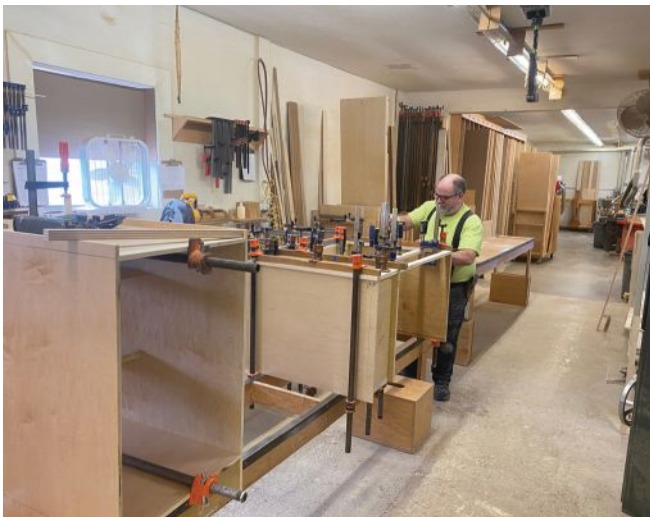


**SAND PRO®**

- Sanding Tables
- Sanding Booths
- Inspection Lighting

Phone: 800-265-2008 • [info@sandmanproducts.com](mailto:info@sandmanproducts.com) • [www.sandmanproducts.com](http://www.sandmanproducts.com)





The 10,000-sq.-ft. shop is staffed by eight cabinetmakers and finish specialists, four master installers, one field technician, and three designers.

some Shaker that's not near as deep," he says, adding that finishing trends gravitate heavily towards white paint.

All work is by referral. Fasnacht says stellar customer service is all the advertising he needs.

"We really pay attention to our customers. If they have an issue with a kitchen, even if it's 15, 20 years old, we'll go out and help them with it. We have a lot of repeat customers, some we've done two or three homes for.

"If it's an older kitchen and something went wrong, I go out myself and see what's going on. I normally don't charge for that stuff. I'll replace hinges and things, then next thing, we will get a call from their friends. We don't do any advertising. We don't do home shows anymore. Of course we have an internet presence, and we want to do a little more with social media."

### PREPARING FOR A TRANSITION

Now 68, Fasnacht is getting ready to wind down and retire. He's developing a succession plan. He had a double lung transplant about 10 years ago and was impressed

with how his staff was able to keep things going during his six-month recovery, a sure sign the business is in good hands.

"I want to pass it down to employees who know what they're doing because I want to see this survive. The guy I bought this from was very concerned about its future, and I've got the same concerns," he says.

Fasnacht has upgraded the shop with three new Saw-Stop table saws and makes sure the showroom is current.

"Too often owners know they're leaving so they don't bother replacing equipment, and they don't bother keeping the showrooms up. Here that's already taken care of.

"I know it's time to retire. There's no doubt in my mind. Frankly, it's strange because you get to the point where you're making real money, you have worked your whole life and have all the knowledge, then it's time to retire. How do you preserve that? The truth is my goal is to be around so hopefully I can help them get through some tough times, if they hit them."

Learn more at [cvck.com](http://cvck.com). [W](#)



Return conveyors from James L. Taylor allow a single operator to stay in position while operating a large machine.

# When every day is moving day

Solutions and options for a shop's material handling needs

By John English

## Even forklifts have gone electric.

**Wolter Inc.** is a materials handling specialist in the Midwest ([wolterinc.com](http://wolterinc.com)) that provides moving machinery to sawmills and large lumberyards, among other facilities. The company recently replaced an entire fleet of diesel and propane forklifts for PC Lumber in Indiana with electric lifts. In addition to lumber, PC distributes windows, doors and other architectural elements. The yard crew has discovered that their new Linde electric forklifts are quieter, smoother, respond faster, operate both indoors and out with no fumes, and the charging costs a small fraction of their former fuel costs (around 10 percent).

Not every woodshop needs a fleet of forklifts, but most need to move pallets of sheet goods or bunks of lumber on a regular basis. Several manufacturers build smaller electric forklifts that are ideal for a woodshop, especially in winter when the building is sealed and fossil fuel exhaust emissions are a challenge. **Carer** ([carerforklifts.com](http://carerforklifts.com)) has been building them for almost 40 years and the British

Columbia manufacturer specializes in lumber applications. Other suppliers include Bobcat, Toyota, Parker Hannifin, Hyster-Yale, Clark, Crown Equipment, Mitsubishi, Linde, and Caterpillar, to name a few.

Once a forklift or manual cart has delivered sheets or boards to a machine, material handling switches from gross to fine maneuvers. There are a lot of options when it comes to loading, unloading, stacking and tracking. Following is a tour of various options that is designed to help shop managers find options rather than simple solutions. Material handling is evolving rapidly, and factors such as artificial intelligence (AI) are affecting the way that software can be used to track, store, retrieve, move and place materials at machines.

## MOVING MATERIALS

The Mahros material handling line from **SCM Group North America** ([scmgroup.com](http://scmgroup.com)) includes the Stacker that can unload parts from a saw and read dimensions so it can orient



parts; the Speedy that feeds and stack with single or double stations; the Brush feeder and stacker that can cycle up to 20 times a minute in drilling, banding and coating situations; the fully automated Runner that feeds and stacks without an operator present; the Carrier that moves large panels with suction cups to load and unload machines; a Panel Rotation System that can, for example, rotate a door 90 degrees; a selection of flippers that can rotate parts crosswise and/or lengthwise 180 degrees; and a family of conveyors and air cushion tables that can be formatted for pretty much any dimension on any machine.

Conveying is a concept that uses roller tables to move large, awkward, numerous or heavy loads horizontally, eliminating the need to lift, orient or otherwise handle parts manually. **Atlantic Machinery** in New Milford, Conn. ([atlanticmach.com](http://atlanticmach.com)) has been importing and distributing high quality Italian machinery since 1984. Among the equipment are FIN brand manual and automatic roller or disc conveyors that are available in 4x8, 4x10 and 5x12 configurations. A woodworker can vary the speed on the automated ones from 15 to 95 feet per minute, and there's an electronic eye brake as an option.

**Uline** ([uline.com](http://uline.com)) may be a good conveyor solution for small shops on a tighter budget. The company is the leading distributor of shipping, industrial and packaging materials to businesses throughout North America, and the catalog carries light duty, heavy duty and extra-wide conveyors, along with expanding mobile units that can follow a curve. Uline's gravity skate wheel conveyors have axles every 3" to support even small parts such as drawer sides, and they come in lengths up to 36 feet and widths up to 30".

**Barbaric** ([barbaric.at](http://barbaric.at)) in Linz, Austria, has its U.S. headquarters in Wake Forest, N.C. Woodshop owners may be familiar with the company's booths at shows such as IWF Atlanta, where the family-run business has demonstrated several interesting material handling tools for woodworkers. The product line ranges from manual vacuum lifters for solid wood to fully automatic panel storage and retrieval systems for sheet stock. Barbaric makes a number of specialized lifting devices such as the RWL RackLifter that loads and unloads vertical panel saws. And the company also offers panel sorting and sheet good inventory management systems.

CNC operators are familiar with the concept of pendulum loading. **Biesse** ([biesse.com](http://biesse.com)) describes it as allowing an operator to load and unload parts at one end of the bed while the machine works at the other end. This means the machine is never sitting idle, and the operator isn't wasting time watching the machine and waiting for it to finish its cycle. Now Biesse has introduced multi-panel pendulum loading on its Rover series of CNC machines. The number of parts that can be worked on at any given time is limited only by the physical size of the bed or the number of pods and rails. So, a large machine may be able to accommodate up to eight workpieces (four on each side) at a time. This makes it viable to machine an entire unit (a cabinet for example), as a single batch rather than machining multiple quantities of each component part one after the other. In



Air tables from Doucet Machineries make it easier to handle large and heavy panels by floating them on a cushion of air.



Barth carts from Martin Woodworking allow a woodworker to handle awkward materials by lifting, raising or tilting.



Biesse's Rover CNCs can now be set up with multi-panel pendulum loading to reduce material handling times.



The Kentwood Advantage Rip Series from Stiles Machinery adds AI defect scanning and automation to rip operations.





The Canadian manufacturer, Carer, has been building electric forklifts for lumber handling for almost 40 years.



Among Barbaric's material handling systems are a panel picker (top) and sheetstock inventory system (bottom).

doing so, it dramatically reduces the amount of material handling required.

## VACUUMS AND STORAGE

**Dalmec** ([dalmec.com](http://dalmec.com)), an Italian manufacturer, has a location in Bloomingdale, Ill., and among its products is the Mandrel manipulator. This is a vacuum lift that can be steered around by hand, so the operator can place items easily without lifting. Dalmec makes 11 models that lift weights from 6 to 1,500 kg.

**Hendrick Mfg.** ([hendrickmanufacturing.com](http://hendrickmanufacturing.com)) offers the Vaculex vacuum lift designed to "help operators pluck heavy materials up and onto elevated surfaces much more easily, while offering maximum flexibility in movement, so they work in countless unique setups that a lift table may not accommodate," according to the company. Vaculex is part of the Swedish company TAWI AB, which offers a wide range of material handling solutions.

**Hermance Machine Co.** is now part of Wurth Baer ([wurthbaermachinery.com](http://wurthbaermachinery.com)), which offers a number of material handling options including vacuum lifts from Schmalz, material handling tables from TigerStop, panel carts, and sheet good skates.

The Store-Master 5110 from **Holz-Her USA** ([holzherusa.com](http://holzherusa.com)) is designed to minimize personnel and organizational expenses for handling panels in the woodshop, even for a wide variety of panels and decorative finishes. Panels are selected by a computer during removal, and they can be rotated easily and stored in any direction.

**JTL** ([jamesltaylor.com](http://jamesltaylor.com)) in Poughkeepsie, N.Y., offers a range of material handling return conveyors that allow one operator to tend a machine. They eliminate the need to catch and stack finished parts on edge banders, wide belt sanders, straight line rip saws, and more.

Carts can be so much more than a platform with wheels.



**Martin Woodworking Machine** ([martin-usa.com](http://martin-usa.com)) carries a line of Barth carts that have both vacuuming and lifting capabilities. There are two assembly tables and five lifting tables in the line, and they can all be adjusted to match the height of machines or employees. The Barth VakuuCar+ is a manual, mobile workbench with a power strip, mechanical clamps, vacuum clamps, a tilting table, a foot-controlled vacuum pump, an expandable work surface, and room for tool storage. Other options include drawers and containers. And the VacuuLift-S is a lifting table with three flat vacuum suction cups. Its foot pump can switch automatically between quick and lifting strokes, so the table can raise or lower quickly, or in a fine adjustment manner.

The new **Rangate Lift Cart 300** ([rangate.com](http://rangate.com)) can lift up to 660 lbs. It operates with a foot bar and has two locking wheels. It doesn't come with a top, as most users want to design their own. That's an increasingly popular option with worktables since the evolution of clamps that work in sliding dovetailed slots, or in tops that have a grid of drilled peg holes.

The **Bora PM-1850 Panel Carrier/Infeed Table** ([boratool.com](http://boratool.com)) allows a single woodworker to roll full sheets across the woodshop, tilt them on the swiveling platform, lock them in a horizontal position, and then slide them sideways to feed a machine such as a table saw. It has 7" wheels and the vertical orientation lets it pass through interior doorways. The PM-1850 can handle two sheets of 3/4" plywood simultaneously.

A trio of handy material handling devices from **Infinity Cutting Tools** ([infinitytools.com](http://infinitytools.com)) includes the Gorilla Gripper for picking up sheets of plywood or MDF; FastCap's Speed Skate ([fastcap.com](http://fastcap.com)) for rolling large sheets on edge across the woodshop; and Infinity's own Leg UP that clamps onto the left end of a table saw's rip fence guide, making use of the fact that the guide is a hollow metal tube. A long arm with a hook on the end hangs down, and the woodworker pops one side of a sheet of plywood onto this. Then it's just a matter of tilting the sheet onto the table with no heavy lifting involved.

## NO FORKLIFT, NO PROBLEM

One of the most challenging aspects of material handling for small shops without a forklift is moving panels, sheets and even countertops across thresholds, gravel and other obstacles. **Saw Trax Mfg.** ([sawtrax.com](http://sawtrax.com)) makes a range of jobsite and shop dollies and carts with large wheels and customizable retaining bars.

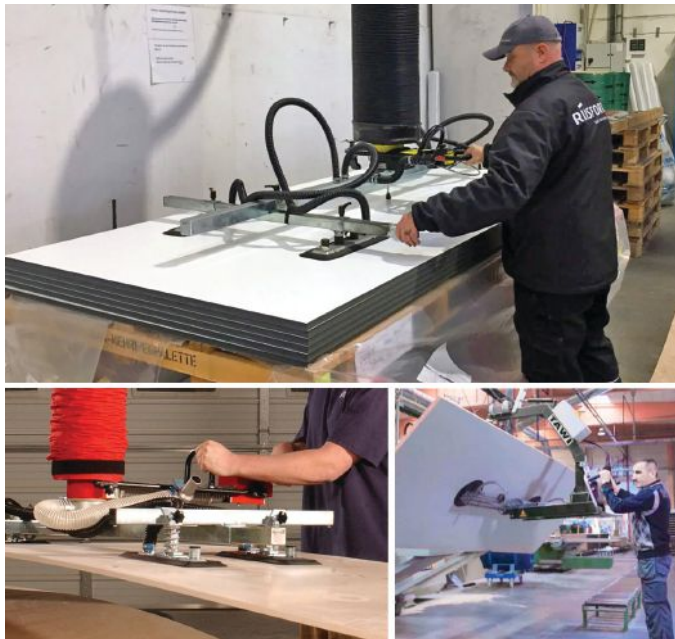
Material handling isn't just about moving loads vertically to load a machine, or horizontally to stack them across the shop. It's also about rotating. **Southworth Products** ([southworthproducts.com](http://southworthproducts.com)) points out how a simple device like an industrial turntable can increase worker productivity. Repositioning the load rather than the worker saves time, reduces fatigue and eliminates hazards caused by walking around the load. The Maine manufacturer offers a wide variety of industrial turntables, including manual versions that can be easily spun by a worker even when loaded to capacity. There are also electric turntables that rotate loads at the touch of a button. Either style can be placed



Dalmec's mandrel gripping system for handling and pneumatic tilting of wooden parts.



Grizzly Industrial offers an alternative to electric forklifts for shops on a budget. The Bear-Lift Pro can move up to two tons.



Vaculex vacuum lifts made by TAWI in Sweden are available through Hendricks Mfg. in Salem, Mass.

directly on the floor, on a fixed height platform, or mounted on a lift table. Southworth also makes a round turntable that sits on the shop floor, where a loaded pallet jack can be rolled onto it and then rotated so that long loads like plywood can be pushed around sharp corners.



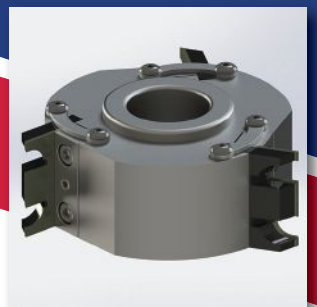
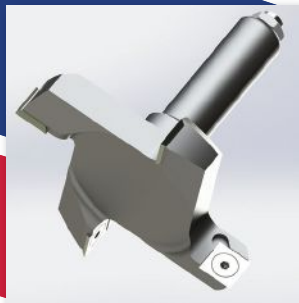
Southworth's new Production Ready package adds heavy-duty features to many of its material handling products.

**Stiles Machinery** ([stilesmachinery.com](http://stilesmachinery.com)) notes that as the number of automated machines increases on the shop floor, material handling equipment and practices are becoming a more crucial part of production. To respond to that need, Stiles carries a number of Doucet machines for



# VEXOR

Custom Woodworking Tools  
Denver, CO



Router bits, shaper cutters,  
insert tools, profile knives and  
more for the woodworking industry.  
Family owned and operated for over 40 years

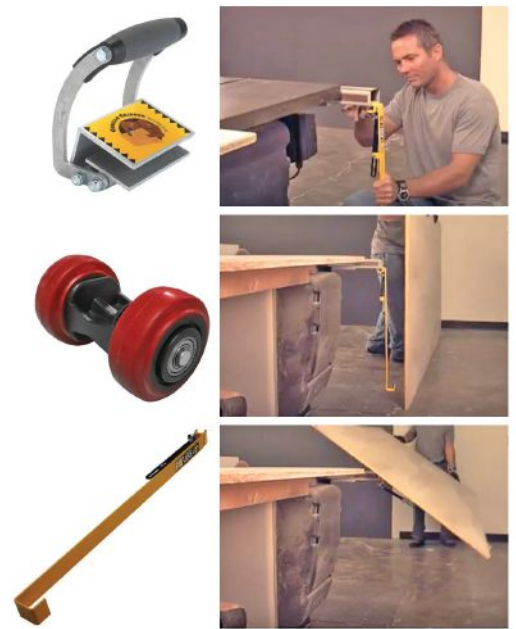
Vexorcwt.com | Toll Free: 877.879.8906





Uline offers budget-sensitive conveyors that can bend around machines or other obstructions in the woodshop.

flipping, returning, stacking, unstacking, feeding, storing, retrieving, lifting and moving whole and partial sheets, along with casework parts and fronts. Many of these solutions are machine specific, such as the Kentwood Advantage Rip Series which allows shops working with solid



Material handling solutions from Infinity Tools include the Gorilla Gripper, FastCap's Speed Skate, and the Leg UP.

wood to get the most from rip saws. It adds AI defect scanning, infeed and outfeed automation, and optimization software, among other features.

**Voorwood Precision Machinery** ([voorwood.com](http://voorwood.com)) makes several return conveyors in right or left configurations, 24"

## SAVE TIME & LABOR ON CUSTOM DOVETAIL DRAWER BOXES!



### From our factory in Louisiana to your next build...

Hardware Resources is fully equipped to build custom dovetail drawer boxes to save your company time and labor. Just send us your specs and species choice, then we'll put our team of specialists to work for you.

- Standard 5-day turnaround after order confirmation
- US-based production, assembly, and support teams
- Standard drawer, rollout, or high-back rollout boxes
- Assembled or unassembled
- Standard heights with custom depth & width
- 1/4" standard or 1/2" bottom
- Optional universal notch for undermount slides
- Optional undermount slide clip factory installed
- Complimentary laser engraving



Scan to view more info!

<https://delivr.com/2t5ww>

**Hardware<sup>™</sup>**  
**Resources**

1-800-463-0660  
[www.HardwareResources.com](http://www.HardwareResources.com)





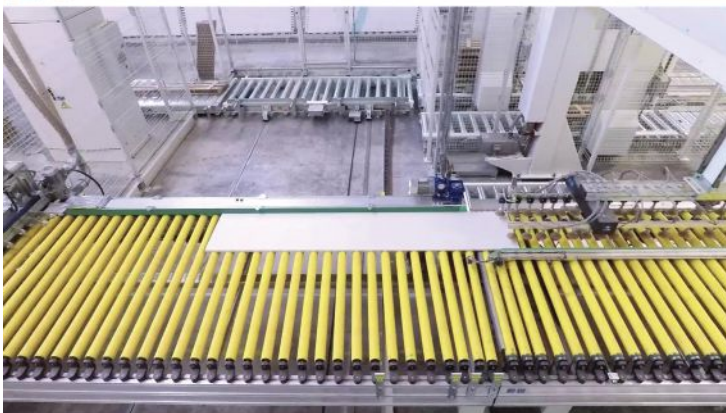
Woodshops can buy storage racks at the same place that the big box stores do at Warehouse Rack & Shelf.

or 36" widths, and for single-phase power needs. The steel rollers are individually driven by welded urethane belts, and speeds can range from 5 to 100 feet per minute.

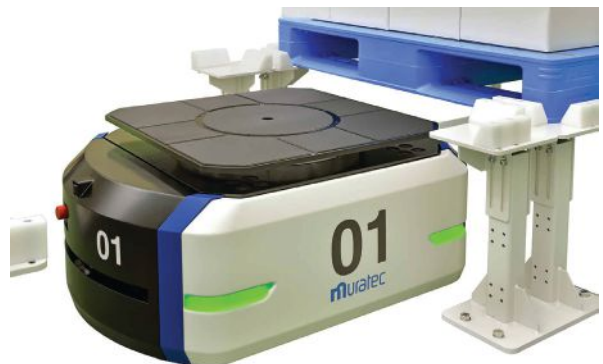
Air tables are a relatively expensive but very helpful op-

tion for material handling. They are typically used with an edge bander or panel saw, or at the end of a return conveyor. These are positive air pressure cabinets that let heavy parts glide effortlessly across their tops on a cushion of air. Quebec-based **Doucet Machineries** ([doucetinc.com](http://doucetinc.com)) offers air tables in different configurations for handling large and heavy panels. Some models include a variable height feature, which means that they can be used by an operator to transfer a panel from one piece of equipment to the next at different working heights. Doucet's air tables can also be custom designed in a variety of sizes and shapes (including an L) to suit specific needs.

Material handling solutions from the **Manitou Group** ([manitou.com](http://manitou.com)), a French company, are widely distributed in North America. They include forklifts, telescoping and rotating handlers, truck-mounted forklifts, articulated loaders, and skid



The Carrier from SCM Group (top) uses suction to load sheets, and the company also supplies custom conveyors.



The Compact Shuttle from Muratec is a pallet mover that hints at the future of material handling.



loaders with features that are adapted to wood handling work. This line is perhaps more familiar at the earlier stages of production in mills and yards, but Manitou products are also used to transport heavy loads and pallets, remove sawdust, and load pallets.

Shops that lay up veneer panels are already familiar with **Sweed Inc.**, ([sweed.com](http://sweed.com)) in southern Oregon. The company makes scrap choppers, recycling systems, and automated machines for veneer and panel manufacturers that use vacuum systems.

**Muratec** ([muratec-usa.com](http://muratec-usa.com)) is a harbinger of changes to come in the woodworking industry. The company makes a robotic Compact Shuttle that will pick up a pallet and take it where it needs to go. It can turn on a dime and operate in small spaces. It has independent 360-degree rotation and a turntable on top. Smart and compact, it has multi-unit controls to enable pallet loading from any direction, with a maximum capacity of 2,200 lbs.

Shop owners who are looking for ways to store solid wood and sheet goods might wish to visit the website of **Warehouse Rack & Shelf** ([rackandshelf.com](http://rackandshelf.com)). This company supplies lumber racks to big box stores – the ones that carry full bunks of plywood and long construction lumber. The catalog also includes other material handling solutions such as millwork racks with dividers for storing moldings, and lots of carts and rack systems.

And finally, **Grizzly Industrial** ([grizzly.com](http://grizzly.com)) offers a wide



Woodworkers make their own tabletop for the new Rangatge Lift Cart 300, which can lift and move 600 lbs. of material.

range of material handling solutions. One of those options is a 2-ton manual forklift called the Bear-Lift Pro Pallet Stacker (item T31643). This is perfect for small warehouses and allows stacking of pallets two-high without a forklift truck. It fits a standard 42" pallet, and the 35" long forks are adjustable to fit narrower pallets too. There's a welded steel chassis with heavy-duty smooth-rolling wheels, and a dual-action hydraulic lift that can easily move pallets up to 4,000 lbs. **W**

Courtesy of manufacturers

JANUARY 2025

43

WOODSHOPNEWS



*The Industry Leader in Dust Collection*

7.5-20HP DIRECT DRIVE SYSTEMS



LEARN HOW  
CHOOSING  
ONEIDA AIR  
SAVED TRIMJOIST  
\$8K A MONTH!



 **MADE IN THE U.S.A. FOR OVER 30 YEARS**

**oneida-air.com**



## Esherick exhibit opens at Brandywine Museum

By Jennifer Hicks

The Brandywine Museum of Art in Chadds Ford, Pa., is hosting the “Crafted World of Wharton Esherick” exhibition through Jan. 19, 2025. It explores the interdisciplinary creativity of Wharton Esherick (1887-1970), the American artist known as the father of the Studio Furniture Movement.

Pieces are from Esherick’s home and studio, now the Wharton Esherick Museum in Paoli, Pa., which features thousands of works from his seven decades of artistic practice.

“The Crafted World brings selections from this rich and rarely loaned collection to a broader public, including many objects never before seen except in Esherick’s home and studio. Detailing the artist’s career from his early woodcut illustrations for books by members of the avant-garde literati to his revolutionary reimagining of furniture forms as organic sculpture, works will be presented with thematic vignettes that invite visitors into Esherick’s story and bring the essence of his creative world into the gallery,” the museum said in a statement.

The exhibition will travel to the Chazen Museum of Art in Madison, Wis., from Feb. 17 to May 18, and the Taft Museum of Art in Cincinnati from June 7 to Sept. 7. Learn more at [brandywine.org](http://brandywine.org).

### MASTERS OF CARPENTRY

Japan House Los Angeles opened “Masters of Carpentry: Melding Forest, Skill and Spirit” on Nov. 20, a touring exhibition that honors the Japanese daiku, or master carpen-

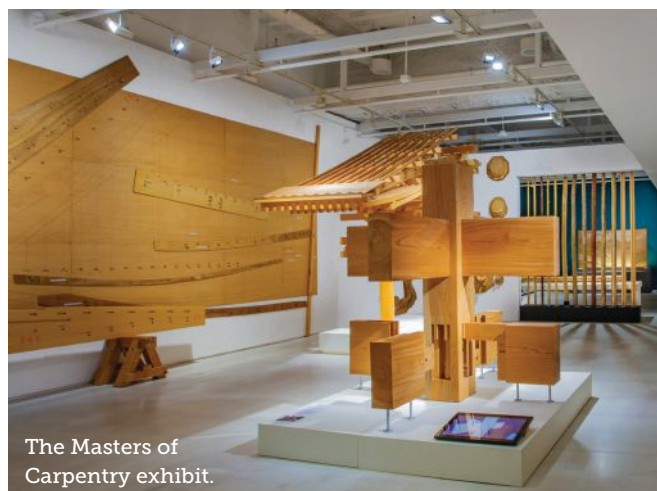
ters, who are revered as the guardians of timeless traditions and cultural heritage of Japan’s wood craft.

Produced in conjunction with the Takenaka Carpentry Tools Museum in Kobe, Japan, the exhibition will travel to Japan House locations in London and Sao Paulo through Jan. 22, 2025.

“In Japan, a rich tradition of carpentry and wood craftsmanship has flourished over centuries, nurtured by imperial and sacred architecture, and propelled by the nation’s economic and cultural development. Daiku, the revered masters of Japanese carpentry and woodcutting, have long honored nature, seeking the benevolence of mountain deities in gathering their materials,” the Japan House Los Angeles said in a statement.

“Central to their ethos is the imperative of sourcing wood in harmony with the forest, advocating for the meticulous selection of materials tailored to each application. Japanese woodworking practice, renowned for its precision, is thus rooted in a profound reverence for nature and environmental balance.”

Learn more at [japanhousela.com](http://japanhousela.com). **W**







#### DESIGNS OF DISTINCTION

plans to debut its new Mullion Collection at the Kitchen & Bath Industry Show (KBIS) in February 2025. The collection features laser-cut mullions from brass, carbon steel, hardwoods, and MDF. "The new Mullion Collection draws inspiration from a range of design aesthetics – from Art Deco and Art Nouveau to Mid-Century modern – creating a bold yet timeless look that enhances the beauty of any space," the company explained. "Whether you are crafting intricate cabinet doors or architectural accents, these mullions offer both form and function. Their scalable profiles are perfect for bespoke designs, with the ability to customize each piece to meet specific project needs." Learn more at [brownwoodinc.com/dod](https://brownwoodinc.com/dod).



## Used Woodworking Machinery Marketplace

Buyers, Sellers,  
Banks & Dealers  
Trust iBid for:

- ✓ Bank Repos
- ✓ Trade-Ins
- ✓ Machine Upgrades
- ✓ Shop Closures
- ✓ Turn-Key Service

CALL or TEXT:



**(678) 925-3556**

Ask About  
Section 179

**Tax  
Savings!**



*iBiD was able to quickly list and source buyers for our equipment. I will always use them as my first choice of equipment selling and purchasing."*

**S. Schueler, Lumbermen's**



SCAN ME

Edgebanders • CNCs • Saws • Dust Collection • Drilling • Sanders

[www.ibidmachinery.com](https://www.ibidmachinery.com)



**DOUG MOCKETT & CO.** presents the Easy Access Power Grommet, model PCS106A, with two power and two USB outlets. The grommet can be installed into headboards, entertainment centers, desks, or anywhere convenient power is needed. It is available in three finishes. Learn more at [mockett.com](http://mockett.com).



**PantoRouter**

## Elevate Your Craftsmanship

The PantoRouter<sup>®</sup> Joinery Machine is a game changer.

- ✓ Professional-level quality and accuracy
- ✓ Precision and speed
- ✓ Minimal setup without complicated jigs
- ✓ Predictable and repeatable results



[PantoRouter.com](http://PantoRouter.com)



## Compressed Air Filtration

Remove moisture and contaminants from compressed air lines to protect tools and improve finished products



### Common Uses:

- Finishing Booths
- CNC Machines
- Edgers
- Sanders
- Routers

### Features:

- Remove liquids & contaminants down to .01 micron
- Activated Carbon to absorb oil mists & vapors
- Automatic Float Drain Standard
- Mounting hardware included



800-348-2463  
[www.laman.com](http://www.laman.com)





#### **LITTLE GIANT LADDER SYSTEMS**

has introduced Fortress, a fiberglass ladder with a fully enclosed, elevated wraparound standing platform. "The Simple Setup and Storage One movement enables a user to deploy or fold Fortress with a single push or pull of the platform handle. It also offers expert-designed tool tray slots, holes, hooks and a closeable container to store fasteners and other small, loose items," the company explained. Learn more at [littlegiant-ladders.com](http://littlegiant-ladders.com).

Innovative. Light. Ergonomic.



#### **THE SATAjet K 1800 spray mix – High pressure coating has never been easier**

The new lightweight gun in this spray gun class with its well-balanced gun body combines an optimized ergonomic design with a finely-tuned nozzle range and with the innovative clampLock paint needle system.

- Ergonomic design with a well-balanced gun body
- High surface quality at a pressure in the range of 500 - 3625 psi
- Low weight
- Single-axis trigger system for low trigger forces



800-533-8016  
satajet@satausa.com  
[www.satausa.com](http://www.satausa.com)

INFO  
[www.sata.com/satajet-k-1800-spray-mix](http://www.sata.com/satajet-k-1800-spray-mix)

## *Decorative Wooden Tambour*

**FLEXIBLE DESIGNS IN 5 DIFFERENT WOOD TYPES  
12 DECORATIVE PATTERNS AVAILABLE!**



[WWW.OSBORNEWOOD.COM](http://WWW.OSBORNEWOOD.COM) • (800) 849-8876





**OLIVER MACHINERY** announces the addition of the 6301 6" x 48" benchtop edge sander. The 6301 features a 3/4-hp, single-phase, 15-amp, 115-volt motor and a table that can be used with the belt in the horizontal or vertical position, or any angle in between. Belt tracking and tension are easy to adjust, with full access to the belt for quick replacement, according to the company. Learn more at [olivermachinery.net](http://olivermachinery.net).



## You know cabinets. We know wood.

Excellence in cabinetry. That's what you're known for. You depend on premium wood of consistent quality. Our fine Appalachian hardwoods are your solution. Selected, sawn, and dried by experts in wood who are committed to serving you with excellence.



Contact Our  
Lumber Team

717-548-2668 x103

A division of:



## Do You HATE Sanding?

Sanding is a necessary evil for the woodworker who delivers professional, chatter-free product. But it is time consuming and takes a toll on your arms and hands.



The Chatternator™  
Stand Alone Profile  
Sander is the  
**SOLUTION!**

- Available with a 6" or 12" sanding hub
- Sands up to 16 feet per minute
- Small footprint makes the Chatternator™ a perfect addition to any shop
- Made in the USA

**Your hands will  
thank you!**



Bill Grom, Owner and Inventor

970-872-2322

[www.profilesander.com](http://www.profilesander.com) | [bgrom@tds.net](mailto:bgrom@tds.net)





## WOODPECKERS

introduces its new Compact Auxiliary Rip Fence, a 36" version of its popular Auxiliary Rip Fence, made for smaller saws. "The Compact Auxiliary Rip Fence clamps to your standard fence with two precision-machined clamping blocks and a pair of track clamps. Now you have a straighter, longer, and taller reference for your material," the company explained. "What's more, the clamping blocks attach anywhere along the length of the fence, meaning you can position the extra length exactly where you need it. The material supports hold up your workpiece on the infeed and the outfeed side of the table. And by attaching directly to the bottom of the fence they're automatically aligned with the table." The Compact Auxiliary Rip Fence is selling for \$109.99. Learn more at [woodpeck.com](http://woodpeck.com).

*Some clamps sold separately.*

JANUARY 2025





**Serving Small Custom Cabinet Makers Since 1982**  
**1-800-237-1326**      **WalzCraft.com**  
 Custom Doors, Drawer Boxes & Cabinet Components

Safe. Comfortable. Convenient.





**SATA® air vision 5000™**

The SATA air vision 5000 puts the focus on effective health protection and lets you experience a whole new and comfortable way of breathing, due to a completely re-designed breathing air supply system. With its modern, ergonomic design, the hood can be adapted to fit almost any head shape, allowing the individual adjustment of its circumference, height and position.

[f](#)
[v](#)
[i](#)
[in](#)

INFO  
 sata air vision 5000



**SATA USA Inc.**  
 1 Sata Drive • PO Box 46  
 Spring Valley, MN 55975  
 Phone: 800-533-8016  
 E-mail: [satajet@satausa.com](mailto:satajet@satausa.com)  
[www.satausa.com](http://www.satausa.com)

49

WOODSHOPNEWS



### WOODPECKERS

has introduced the 12-in-1 Tool based on the Hutchison Mfg. Co.'s tool of the same name. It consists of two scales connected to each other with a thumbwheel. "With precision-machined grooves and high contrast markings, you can align the two scales in different configurations to perform 12 essential layout and measurement functions. On top of all that, the tool folds up and stores conveniently in your pencil pocket," the company explained. The 12-in-1 Tool sells for \$49.99. Learn more at [woodpeck.com](http://woodpeck.com). **W**



## DOUBLE POCKET FACE FRAME SYSTEM

TWO Bits Are  
BETTER than One!



- The **only** Choice for a double pocket hole machine on the market
- Designed to increase productivity and efficiency by streamlining the face frame assembly process, reducing manual labor and minimizing errors

616-546-8225 — [RitterMachinery.com](http://RitterMachinery.com)

CHOICE MACHINERY GROUP



## From 1 Drawer to 1,000

Quality You Count On...  
And On And On And On!

At CCF Industries, we put you first!  
Every order is customized to fit your  
needs, the quality does not go down  
when the quantity goes up.



[www.ccfdrawers.com](http://www.ccfdrawers.com)

4716 Rt. 66 Apollo, PA 15613  
800.581.3683 phone: 724.727.2045



Organizations sponsoring meetings, classes or shows of interest to professional or hobbyist woodworkers are invited to submit items to [editorial@woodshopnews.com](mailto:editorial@woodshopnews.com).

Include name, dates, location, description of event and a contact address or telephone number. Calendar items, which should be typed or printed clearly, must be received at least 60 days before the event.

Please note that fees, as listed, might not include materials or shop fees. Check with a specific class for further details.

— Compiled by Jennifer Hicks

## ARIZONA

**April 29-May 1** — Woodworking Industry Conference, presented by the Wood Industry Association, featuring networking opportunities, presentations and more. Location: Fairmont Scottsdale Princess in Scottsdale. [woodindustry.org](http://woodindustry.org)

## CALIFORNIA

**Monthly** — San Fernando Valley Woodworkers meetings are held on the third Thursday of each month at 7 p.m. at the Highland Hall Waldorf

School's woodshop in Northridge. [sfvw.org](http://sfvw.org)

**Monthly** — Society of Wood Manufacturing, a chapter of AWFS consisting of educators, manufacturers, hardware and industrial suppliers, and machinery dealers, meets during the second week of each month. For location and dates, visit [awfs.org](http://awfs.org).

**Monthly** — San Joaquin Fine Woodworkers Association meetings are open to all experience levels at members' shops. For locations and dates, visit [sjfwa.com](http://sjfwa.com).

## FLORIDA

**Ongoing** — The Dunedin Fine Art Center is offering six-week woodturning classes at its Cottage Campus taught by AAW professional member Tony Marsh for beginners and intermediate-level participants. Full-day classes are held on Thursdays. Call 727-298-3322 or e-mail [education@dfac.org](mailto:education@dfac.org).

**Monthly** — Woodcrafters Club of Tampa meets every third Thursday evening at 3809 W. Broad St. in Tampa. [tampawoodcrafters.org](http://tampawoodcrafters.org)

**April 10-12** — Stairbuilders & Manufacturers Association's annual conference featuring educational presentations, networking, awards, and more. Location: Hilton Pensacola Beach, Pensacola. [stairways.org](http://stairways.org)

## LOUISIANA

**March 26-28** — 69th annual World of

**Having trouble holding parts?**  
**We can help!**



Vacuum cups for all CNC Routers

See our videos online at [www.greenbvc.com](http://www.greenbvc.com)

**BVC**

**BETTER VACUUM CUPS, INC.**  
[www.GreenBVC.com](http://www.GreenBVC.com)  
Call 877-872-2821

**MADE IN USA**  
U.S. Patents Held

**Contour Banding**  
**Made Simple.**

**The NEW**  
**nVision C1.5**  
**Machine!**



**Now only**  
**\$49,900!**

**SNX**

[www.snxtechnologies.com](http://www.snxtechnologies.com)  
(320) 380-3800



Wood Convention in New Orleans, hosted by the International Wood Products Association, featuring vendors, educational presentations, networking, and more. [iwpaewood.org](http://iwpaewood.org)

## MAINE

**Ongoing** — The Center for Furniture Craftsmanship offers year-round classes in woodworking to the highest degree of craftsmanship. One- and two-week workshops from June through October; 12-week Furniture Intensives; a nine-month Comprehensive; eight-week Turning Intensives, and Fellowships. [woodschoool.org](http://woodschoool.org)

## MARYLAND

**Monthly** — The Howard County Woodworkers Guild meets the first Saturdays of the month at the Bain Senior Center at 5470 Ruth Keeton Way in Columbia from 9 a.m. to 12 p.m. Contact: Manny Flecker at [aaron0641@hotmail.com](mailto:aaron0641@hotmail.com).

## MINNESOTA

**Monthly** — The Minnesota Woodworkers Guild meets on the second Tuesday of each month at various locations. [mnwwwg.org](http://mnwwwg.org)

## NEVADA

**Feb. 25-27** — Kitchen & Bath Industry Show and International Builders' Show as part of Design and Construction Week. Annual gathering of residential construction and design industry professionals spotlighting new products, industry experts and networking opportunities. Location: Las Vegas Convention Center. [designandconstructionweek.com](http://designandconstructionweek.com)

**July 22-25** — AWFS Fair, featuring over 500 exhibitors, educational seminars, networking opportunities, and more. Location: Las Vegas Convention Center. [awfsfair.org](http://awfsfair.org)

## NEW JERSEY

**Monthly** — The North Jersey Woodworkers Association meets the third Monday of every month. [njwawoodworkers.org](http://njwawoodworkers.org)

**Monthly** — The Professional Woodworkers Guild of Upper New Jersey meets the third Wednesday of every month. [njwoodguild.com](http://njwoodguild.com)

## NEW YORK

**Monthly** — The Woodworkers of Central New York holds meetings on the first Thursday of each month at 6:30 p.m. at the Belgium Cold Springs Fire Department in Baldwinsville. [woodcny.org](http://woodcny.org)

**Monthly** — Northeast Woodworkers Association meetings held on the second Thursday of the month at various locations in the Albany area. [woodworker.org](http://woodworker.org)

**Monthly** — The Long Island Woodworkers meet on the first Wednesday of each month at 7 p.m. at the Frank Brush Barn of the Smithtown Historical Society in Smithtown. [liwoodworkers.org](http://liwoodworkers.org)

**April 5-6** — Wood Finishing Fundamentals weekend workshop with Mike Mascelli. Fee: \$375, plus \$50 materials. Location: Wendell Castle Workshop in Scottsville. [wendellcastle.org](http://wendellcastle.org)

**April 26** — Getting the Most from your Band Saw with Michael Fortune, a one-day workshop. Fee: \$200. Location: Wendell Castle Workshop in Scottsville. [wendellcastle.org](http://wendellcastle.org)

**April 28 — May 4** — Advanced Woodworking: Tables and Benches with Michael Fortune. Fee: \$1,400. Location: Wendell Castle Workshop in Scottsville. [wendellcastle.org](http://wendellcastle.org)

**May 18-20** — International Contemporary Furniture Fair. Location: Javits Convention Center. [icff.com](http://icff.com)

**June 26-28** — Furniture Society Conference, You Are Here: Makers, Place, & Impact, featuring workshops, artist talks, panel discussions, demos, and more. Location: Syracuse. [furnsoc.org](http://furnsoc.org)

## NORTH CAROLINA

**Monthly** — Triangle Woodworkers Association meetings held on the third Tuesday of each month at 7 p.m. at Klingspor's Woodworking Shop in MacGregor Village in Cary. [trianglewoodworkers.com](http://trianglewoodworkers.com)

**Monthly** — Charlotte Woodworkers Association meets the third Tuesday of each month, except December, at 6:15 p.m. Location: 8801 Park Road in Charlotte. [charlottewoodworkers.org](http://charlottewoodworkers.org)

**Feb. 21-23, 2025** — The 38th annual Arts & Crafts Conference and Shows. Location: Omni Grove Park Inn, Ashe-

ville. In wake of Hurricane Helene, event organizers ask those interested to visit [arts-craftsconference.com](http://arts-craftsconference.com) regarding lodging and transportation.

**April 15-17** — National Wood Flooring Assoc. NWFA Expo: Go the Distance. Trade show dedicated exclusively to wood flooring, representing all business types in the industry. Location: Charlotte Convention Center. [nwfa-expo.org](http://nwfa-expo.org)

## OHIO

**Ongoing** — Cincinnati Woodworking Club meets the second Saturday in the months of Jan., March, May, Sept. and Nov. from 8:30 a.m. to 12:30 p.m. at the E.B. Mueller in Reading. [cincinnatiwoodworkingclub.org](http://cincinnatiwoodworkingclub.org)

## PENNSYLVANIA

**Monthly** — Lehigh Valley Woodworkers Guild meets at 6:30 p.m. every third Tuesday of the month at the Woodcraft in Allentown. Various craftspeople provide presentations on their woodworking techniques. [lvwwwg.com](http://lvwwwg.com)

## SOUTH DAKOTA

**Monthly** — The South Dakota Woodworkers Guild meets the last Thursday of every month, except August, at various members' shops. The club has hand tool and woodturning groups. Learn more at [sdwoodworker.org](http://sdwoodworker.org).

## UTAH

**Feb. 5-7** — Wood Industry Association Networking & Snowsports, a blend of industry networking and mountain adventures. Location: Little America Hotel in Salt Lake City. [woodindustry.org](http://woodindustry.org)

## VERMONT

**Jan. 28 - Feb. 2** — Laser Cutting: The Layered Laser Cut with Sarah Pike, presented by the North Country Studio Workshops. Location: Bennington College in Bennington. [ncsw.org](http://ncsw.org)

## VIRGINIA

**Jan. 23-26** — 27th annual Working Wood in the 18th Century conference. Location: Colonial Williamsburg. [colonialwilliamsburg.org](http://colonialwilliamsburg.org) **W**



# CLASSIFIED MARKETPLACE

E-Mail marketplace@woodshopnews.com for Advertising Information

## Drawers & Doors

EST. 2005  
**STRATTON CREEK**  
WOODWORKS  
(DISTINCTIVE CRAFTSMANSHIP)

\*Thru & Blind  
\*Drawers & Pullouts  
\*Prefinishing  
\*Adjustable Tail Spacing  
\*Undermount Prep  
\*Prompt & Reliable

Compliment  
Your Best Work  
with the Finest  
Machine Cut  
Drawer Boxes  
Available!

330-876-0005  
mail@strattoncreek.com  
www.strattoncreekspecialtyproducts.com

"Your Single Source  
Provider"

Doors, Drawers & More

- No Quantity Limits
- Custom Sizes
- Over 70 Different Grades/Wood Species
- Finished or Unfinished
- Design Flexibility
- Timely Delivery

**WalzCraft**

WalzCraft.com 800-237-1326

Custom  
**Components**  
to Complete  
**Cabinetry**

**EliasWoodwork**

1-800-665-0623  
www.eliaswoodwork.com

## Clamp Hold

**SNX**  
ULTIMATE ROTATING  
VARIABLE FINISHING STAND



SCAN ME

Use Code  
"WOOD"  
for 10% off

(320) 380.3800  
www.snxtechnologies.com

## Fasteners

**MONARCH**  
METAL FABRICATION

**Easy Wall Panel System**

Simple, decorative  
aluminum trim

(631) 750-3000  
monarchmetal.com

## Hardwoods

**RARE WOODS USA**

www.rarewoodsusa.com • (207) 364-1520  
120 species of exotic & domestic woods  
Ebony, Olive, Rosewood, Satinwood, etc.  
\$3 million inventory – buy 1 plank or 1000!

## Hardwoods

**CR Muterspaw**  
LUMBER COMPANY

Specializing in  
Unique Hardwoods  
Exotic  
Figured  
Domestic  
Quartersawn  
&  
Live Edge Slabs  
in stock!

"The Woodworker's Candy Store"

937-572-9663  
sales@crlumber.com  
www.crlumber.com

**STEVE WALL LUMBER CO.**  
Quality Hardwoods and Woodworking Machinery  
For The Craftsman and Educational Institutions.

The trusted supplier from the Heart  
of North Carolina Furniture County.

- HARDWOODS • EXOTICS • THIN CRAFTWOOD • AROMATIC CEDAR
- HARDWOOD PLYWOOD • CUSTOM PANEL DOORS • HARDWOOD FLOORING

See Our Catalog on the WEB: walllumber.com

BOX 287 • MAYODAN, N.C. 27027  
336-427-0637 • 1-800-633-4062  
Email: wood@walllumber.com  
SEND \$1.00 FOR CATALOG

## Lumber

**LET'S GET  
WOODWORKING**

HARDWOOD  
LUMBER &  
PLYWOOD

KILN DRIED  
HARDWOODS: Domestic,  
Imported, Figured & Quartersawn

PLYWOOD: Domestic, Imported,  
Cabinet & Marine Grade

**LL JOHNSON LUMBER MFG CO  
& JOHNSON'S WORKBENCH**

theworkbench.com | 800-292-5937

**PLACE  
YOUR  
AD  
HERE!**

**CALL  
203-952-6790**

# CLASSIFIED MARKETPLACE

E-Mail marketplace@woodshopnews.com for Advertising Information

## Moisture Meters

**Moisture Meters**  
multiple use  
in-kiln and everywhere else



Call  
**800-227-2105**  
[www.Lignomat.com](http://www.Lignomat.com)

## Services

**CNC ROUTER BIT SHARPENING**  
*Spiral & Compression Router Bits  
Sharpened to Factory Specifications,  
using 5 Axis CNC Grinder*

DISCOUNTED PRICING  
ON CNC TOOLING FROM:

**VORTEX**  
1001 COMPANY INC.

**Amana Tool®**  
REDEFINING WOODWORKING

**LMT-ONSRUD** **ES TOOL**

100% Satisfaction  
Guaranteed

FAST TURN-AROUND &  
FREE SHIPPING ONE WAY!

**CONNECTICUT  
SAW & TOOL**

**800.404.1220**

140 Avon Street • Stratford, CT 06615  
info@ctsaw.com • www.CTSAW.com

## Vacuum Press

**VAKuum Press**

Frame Presses  
Custom sizes avail.  
Bags

Air Powered Electric

VAKuum Pumps

**Qualityvak.com**  
800-547-5484

## Veneers

**SUPERIOR VENEER  
Artisan Thick**

1/16" Artisan Thick domestic &  
exotic veneers

4 x 8 & 4 x 10  
5 x 8 & 5 x 10

Available as:  
Face  
Paperbacked  
MDF, Particle Board, Veneer Core  
substrates



[www.superiorveneer.com](http://www.superiorveneer.com)  
ph:855.940.7827 fax:812.941.8780  
1819 Dewey St. New Albany, IN 47150

**WOODSHOP  
NEWS**  
*Spreading the Woodworking Word*

## Scraping & Sanding

## Spray Booth & Finishing

**SNX**  
THE HANDY HEAVY-DUTY  
EDGE-BAND TRIMMING PUCK



SCAN ME



Use Code  
"WOOD"  
for 10% off

(320) 380.3800  
[www.snstechnologies.com](http://www.snstechnologies.com)

**NMR**  
Spray Equipment  
Sales & Service



C.A. Technologies

Binks • Graco  
Devlbiss  
Sames-Kremlin  
WIWA



NINO'S MACHINERY REPAIR

**973-672-2072**

Orange, NJ

[Sales@NMRspray.com](mailto:Sales@NMRspray.com)

*Advertise Here!*

**CONTACT**  
[rory@woodshopnews.com](mailto:rory@woodshopnews.com)





*Find everything you need to build your dream wood home — all under one roof!*



Meet with the industry's foremost log and timber home producers. See first-hand how various building systems are constructed.



## BECOME A KNOW-IT-ALL!

Attend our **Log & Timber University** for detailed, step-by-step instructions on budgeting, planning and building your dream home.

The course is \$95 per person or \$129 per couple (plus \$30 for each additional attendee with the group). This fee covers the Course Guide, a comprehensive textbook to guide you through the entire homebuilding process; a notepad and assorted log & timber magazines; continental breakfast or snacks; plus FREE Lifetime Alumni Pass to the Log & Timber Home Shows.

presented by  
**LOG HOME**  
LIVING  
**Timber Home Living**  
**Cabin** LIFE .com

Visit [www.LogHome.com/shows](http://www.LogHome.com/shows) to find a show near you!

## ADVERTISING INDEX

Amana Tool.....	<a href="http://www.amanatool.com">www.amanatool.com</a> .....	C4	MARTIN Woodworking Machines ...	<a href="http://www.martin-usa.com">www.martin-usa.com</a> .....	2
Better Vacuum Cups, Inc.....	<a href="http://www.GreenBVC.com">www.GreenBVC.com</a> .....	51	Midwest Tool Expo & Auction .....	<a href="http://www.ToolAuctionAndExpo.com">www.ToolAuctionAndExpo.com</a> .....	25
Cabinet Pro LLC.....	<a href="http://www.cabinetpro.com">www.cabinetpro.com</a> .....	33	New England Drawer.....	<a href="http://www.newenglanddrawer.com">www.newenglanddrawer.com</a> .....	7
Cantek America Inc.....	<a href="http://www.cantekamerica.com">www.cantekamerica.com</a> .....	13	Oneida Air Systems Inc .....	<a href="http://www.oneida-air.com">www.oneida-air.com</a> .....	43
Castaly Machine.....	<a href="http://www.castalymachine.com">www.castalymachine.com</a> .....	23	Osborne Wood Products, Inc .....	<a href="http://www.osbornewood.com">www.osbornewood.com</a> .....	47
CCF Industries.....	<a href="http://www.ccfdrawers.com">www.ccfdrawers.com</a> .....	50	Pro Edge Technology .....	<a href="http://www.ProEdgeTechnology.com">www.ProEdgeTechnology.com</a> .....	17
Charles GG Schmidt & Co.....	<a href="http://www.cggschmidt.com">www.cggschmidt.com</a> .....	19	Resource Guide .....	<a href="http://www.resourceguide.woodshopnews.com">www.resourceguide.woodshopnews.com</a> ..	C3
Chatternator.....	<a href="http://www.profilesander.com">www.profilesander.com</a> .....	48	Ritter Machinery Co. ....	<a href="http://www.rittermachinerycompany.com">www.rittermachinerycompany.com</a> .....	50
Connecticut Saw & Tool.....	<a href="http://www.ctsaw.com">www.ctsaw.com</a> .....	5	SandMan Products.....	<a href="http://www.sandmanproducts.com">www.sandmanproducts.com</a> .....	34
Elias Woodwork .....	<a href="http://www.eliaswoodwork.com">www.eliaswoodwork.com</a> .....	3	Sata Spray .....	<a href="http://www.satausa.com">www.satausa.com</a> .....	47, 49
Felder Group USA.....	<a href="http://www.feldergroupusa.com">www.feldergroupusa.com</a> .....	4	Shop Fox .....	<a href="http://www.shopfox.biz">www.shopfox.biz</a> .....	C2
Grex Power Tool .....	<a href="http://www.grexusa.com">www.grexusa.com</a> .....	12	SNX Technologies .....	<a href="http://www.snxtechnologies.com">www.snxtechnologies.com</a> .....	51
Grizzly Industrial, Inc .....	<a href="http://www.grizzly.com">www.grizzly.com</a> .....	28-29	Stoltzfus Forest Products. ....	<a href="http://www.stoltzfusforestproducts.net">www.stoltzfusforestproducts.net</a> .....	48
Hardware Resources .....	<a href="http://www.HardwareResources.com">www.HardwareResources.com</a> .....	41	Thermwood Corp .....	<a href="http://www.thermwood.com">www.thermwood.com</a> .....	24
Hettich .....	<a href="http://www.hettich.com">www.hettich.com</a> .....	1	Vexor Custom Woodworking Tools ..	<a href="http://www.vexorcwt.com">www.vexorcwt.com</a> .....	40
iBiDMachinery .....	<a href="http://www.ibidmachinery.com">www.ibidmachinery.com</a> .....	45	Vortex Tool Co., Inc .....	<a href="http://www.vortextool.com">www.vortextool.com</a> .....	27
KLINGSPOR Abrasive .....	<a href="http://www.klingspor.com">www.klingspor.com</a> .....	21	Wagner Meters .....	<a href="http://www.wagnermeters.com">www.wagnermeters.com</a> .....	16
La-Man Corp.....	<a href="http://www.laman.com">www.laman.com</a> .....	46	WalzCraft Industries Inc.....	<a href="http://www.WalzCraft.com">www.WalzCraft.com</a> .....	49
Lignomat USA, LTD.....	<a href="http://www.lignomat.com">www.lignomat.com</a> .....	14	Woodcraft Solutions / Pantorouter...	<a href="http://www.PantoRouter.com">www.PantoRouter.com</a> .....	46



## Customer appreciation

JANUARY 2025

56

WOODSHOPNEWS

**Colonial Saw**, a distributor of woodworking machinery and equipment, recently held a contest for customers owning one of the company's Striebig vertical panel saws, asking them to explain how the saw has helped boost their business. The winner, Dan Sadler of North Star General Contracting in Davis, Calif., won a free tune-up for his saw.

"Earlier this year we asked our Striebig customers how Striebig vertical panel saw helped streamline their business for a chance to win a free tune up. We had many great examples come in, but [Sadler's] stood out in particular. His story and beautiful custom work caught our attention," the company said in a statement.

Sadler purchased his Striebig in 2017 to help with a large custom cabinetry job and says the saw appealed to him for many reasons, such as safety and precision.

"I'm a general contractor so I do a wide variety of things. Lots of woodworking and custom one-off stuff. I started out as many guys do with a (Delta) Unisaw where you manhandle sheets through it. Some of the melamine boards and things are heavy, around 100 pounds a sheet, and muscling that toward an open blade really made me nervous. So, there's the safety aspect," Sadler tells Woodshop News.

"But it's also helpful for the quality of my work. You can only be so precise while trying to force a big piece of material against the fence, and with this you're just moving the beam so that helps take out the human error."

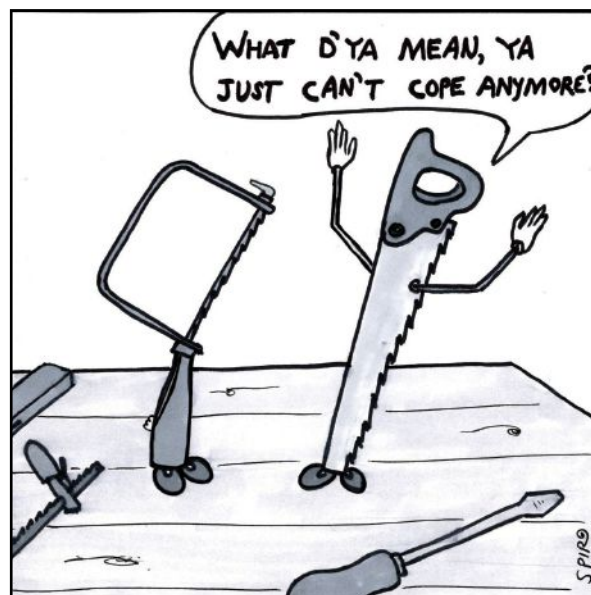
Colonial Saw is the exclusive North American importer of Striebig vertical panel saws, which include manual, semi-automatic, and automatic models. Learn more at [csaw.com](http://csaw.com).

-Jennifer Hicks

Dan Sadler, a general contractor in Davis, Calif., with his Striebig vertical panel saw. It was purchased in 2017 to help with a large custom cabinetry job shown in the photos above.

60 Grit

Rough humor by Steve Spiro



Courtesy of Colonial Saw



# Your online solution to finding the products you need

Over 300 companies listed, covering well over 250 products and services categories.  
If you are looking for it, we can help you find it.

Link through our website [www.WoodshopNews.com](http://www.WoodshopNews.com) or go direct  
[Resourceguide.WoodshopNews.com](http://Resourceguide.WoodshopNews.com)



## Resource Guide Showcase Sponsors



A fast and easy research tool to help you determine which companies can  
supply the products and services you are looking for.



2025 Resource Guide

For marketing information,  
[sales@woodshopnews.com](mailto:sales@woodshopnews.com)

# THE ORIGINAL *colorful* EXTREME COATED ROUTER BITS



The original colorful extreme coated Industrial Spektra™ router bits feature a micro-thin nACo ceramic coating that enables the tool's cutting edge to retain crucial sharpness and lubricity. This provides longevity and produces cutting results of the highest quality. Coating prevents high heat and oxidation which is detrimental to cutting tool performance.

UP TO  
**2.5X**  
LONGER LIFE  
COMPARED TO UNCOATED BITS

**HARDER  
CARBIDE**

— THE ONLY —  
**SPEKTRA™**  
EXTREME TOOL LIFE COATING

## Unleash Precision with Our Premium Saw Blades!

The Amana Tool® Prestige® Series saw blades are designed for superior performance, offering smoother cuts and longer-lasting sharpness.

Their precision-engineered design helps reduce vibration and enhances finish quality, making them a great choice for both professional and hobbyist woodworkers. Whether you're cutting hardwood, softwood, or composite materials, these blades provide consistent results and durability.



★ ★ ★  
**100% MADE IN  
GERMANY**  
HECHO EN ALEMANIA



**Amana Tool®**

[www.amanatool.com](http://www.amanatool.com)

1-800-445-0077