



SINGER

ORIGINAL SINCE 1851.

**With a full range
of stitches, add
dimension to your
next project with ease**

\$85+ included accessories

32 stitches for any fabric:
basic, stretch, decorative

Easy one-step buttonhole for
consistent results every time

Automatic needle threader
quickly threads machine
with ease

Free arm to sew hard-to-reach
areas



M3500

Sewing Machine

Better Homes & Gardens.

do it YOURSELF™

20 IDEAS
**UNDER
\$20**

dream it,
DO IT 38 FRESH UPDATES,
INSIDE + OUT

THIS WEEKEND!
**FRONT
DOOR
MAKEOVER**
—
p. 58

**PLANT A VERTICAL
VEGGIE GARDEN**

**DECLUTTER
YOUR GARAGE**

Summer 2020
VOL. 27/ISSUE 3
BHG.COM/DIYMAGAZINE

COLOR reinvention



Tap the power of color
to transform the everyday
decor around you. Apply
rich, ultra-matte color in
fast-drying **Design Master**
übermatte® spray.
The process is simple.
Spray. Craft. Smile.



fresh greenery packed with punch in übermatte
SALMON/MIST/LIGHT OCHRE



modern color update in übermatte
MIST

View our entire line of products,
find inspiration and watch video
Spray Tips® @ dmcolor.com



ordinary, no more in übermatte
BEACH/CREMA



THE **COLOR** DESIGN
RESOURCE

©2020 DESIGN MASTER colortool, inc.

p. 12



FEATURES

SUMMER 2020

48 MOVING UP

A New York magazine editor makes a big move to Michigan—and upgrades her home with inspiring projects and smart decorating ideas.

58 OH, HELLO YELLOW

Looking for instant curb appeal ideas? We've got you covered! Check out these projects to bring color and life to your front porch.

66 SHELF LIFE

Store your books in style with these four fun takes on a traditional bookcase.

72 MADE IN THE SHADE

Craft your own cabana, then deck it out in one of our three styles for your own mini backyard oasis.

80 HOME SWEET HOMEMADE

A dated ranch gets a total gut job—in a mere two weeks—transforming it into a funky family home.

90 BOX SPRINGS

Edible gardening goes to new heights with these three unique vertical planters + planting ideas for each project.

96 SHE SAID, SHE SHED

A purchased shed undergoes a makeover and becomes a relaxing hangout with bonus tool storage.



90



22



6

weekend
project: resin

trendy
terrazzo!
p.104



DEPARTMENTS

SUMMER 2020

6 TRY IT

Swirl and dip your way through these colorful techniques on how to work with resin.

14 MEET THE MAKER

Get your stitch fix with New York artist Christi Johnson. She walks us through basic embroidery skills and shares her passion for threads.

18 COOL TOOLS

Give your neighbors a bit of lawn envy with these tools geared toward perfecting your yard and landscape.

22 WHAT TO DO WITH...

String up some fun with straps and cords. We show you how to embellish existing items with colorful updates.

30 ORDER IN THE HOUSE

This garage packs a ton of storage into every corner. See all the make it, hack it, buy it ideas!

34 HANDY GIRL

Handy Girl tackles everyday issues to make your home function smarter, not harder.

38 ON OUR RADAR

Kits, products, and tools that will have you heading outdoors (and having a bit of fun indoors too!).

44 SEW EASY

Simple sewing—big impact. Learn how to stitch oilcloth into reversible place mats and a table runner.

104 TREND SITING

The ultimate '80s throwback—terrazzo! Check out these colorful finds featuring the speckled look.

ALSO IN THIS ISSUE

3 EDITOR'S LETTER

5 BHG.COM

101 RESOURCES + PROJECTS UNDER \$20

ON OUR COVER

PHOTOGRAPH DAVID A. LAND/PAT BATES



FROM THE EDITOR

Inspiration and energy always hit me like a creative tidal wave this time of year. Suddenly the days are just long enough, the weather just warm enough, and I feel ready to tackle the upgrades and updates I've been adding to my to-do list for months. (BTW, I recently digitized all my list-making with the free app AnyList. It's been a lifesaver! Give it a try if you're always losing or rewriting those paper lists.)

My top DIY priority? Curb appeal projects that I can finish in a weekend. In fact, I want to do all the front-door facelifts featured in "Oh, Hello, Yellow" (page 58), including the custom doormat and the mod hanging planters. I'm even testing sunny paint hues for my front door! And if outdoor building projects are your jam, don't miss our cozy shed ("She Said She Shed," page 96) or swoon-worthy cabana ("Made in the Shade," page 72). Both getaways will make you want to take up temporary residence in your backyard this summer. Dive in!

Brian

Brian Kramer
Editor, *Do It Yourself*™

PS: Speaking of creative tidal waves. The artwork featured here is tinted resin, poured on an angled canvas. If you prefer an indoor project, learn a quick and easy way to work with resin ("Try It: Resin," page 6).

GET OUTSIDE!

Make the most of summer temps with
DIY projects for your yard.

OUTDOOR FURNITURE IDEAS

WANT TO ADD DIY FLAIR TO
YOUR FRESH-AIR SPACES?
TRY YOUR HAND AT THESE
18 EASY FURNITURE
BUILDS. [BHG.COM/
OUTDOORFURNITURE](https://www.bhg.com/outdoorfurniture)

BUILD A RAILING PLANTER

Create crafty curb appeal with this planter that attaches directly to your railings. [BHG.com/Railing](https://www.bhg.com/Railing)

MAKE AN OUTDOOR MOVIE SCREEN

Turn your backyard into your own theater (just BYO snacks!) with this DIY movie screen. [BHG.com/
MovieScreen](https://www.bhg.com/MovieScreen)

PAINT METAL FURNITURE

Think your metal furniture is on its last legs? Think again with these tips on restoring tired, rusty furniture! [BHG.com/
PaintMetal](https://www.bhg.com/PaintMetal)





TRY IT

RESIN

Part chemistry lab, part art workshop, the process of coating and casting objects with the syrupy substance yields a multitude of water-inspired home decor projects.

PROJECTS **JODI HARRIS** PHOTOGRAPHS **NICOLAS GOURGUECHON** WORDS **BETH ESLINGER**

GET TO KNOW RESIN The mix of epoxy resin and hardener creates a magical, hard-as-nails finish over almost any material. Though resin is easy to use, prep is key—have your supplies and work space ready before the first mix. Cover the floors and worktable of a dust-free room or garage (ideally 65°F–70°F) with heavy-duty plastic. Wear old clothes and latex gloves, and use disposable cups and stir sticks for easy cleanup. Have a level on hand for flat projects such as artwork, *this photo*, so the resin spreads evenly. With your space prepared, it's time to play, starting with simple projects like coasters and glossy artwork. A resin kit covers multiple projects, so you'll have enough to perfect the technique.

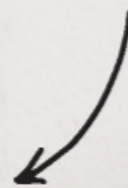


TURN UP THE FUN OF EVERYDAY OBJECTS. HERE, A CANDY MOLD FILLED WITH SUGAR SPRINKLES AND TOPPED WITH RESIN ADDS A SWEET ACCENT TO A WOODEN NAPKIN RING.



MAKING WAVES Resin mix, a clean artist canvas (ours is 24x24 inches), and a few crafts paints yield art so stunning you can almost hear the waves crashing, *this photo*. Using a separate plastic cup for each color, combine resin with a few drops of paint in the following colors: deep blue, teal, light blue, and white, reserving some clear resin. For our canvas, we used about 32 ounces total of mixed resin. Pour stripes or waves of clear resin on the canvas. Working in the same direction but keeping the colors separate, pour the blues and teals onto the canvas, mixing by finger if desired. Continue blending the colors with a heat gun. For sparkle, dust the canvas with teal or blue glitter. To create the look of foam, spread thin stripes of white resin, again applying heat to blend the colors. Cover with a large box or tub to protect the surface from dust while it dries flat for at least 24 hours.

TRIM YOUR ARTWORK
WITH A THIN FRAME
TO HIDE DRIPS ALONG
THE CANVAS EDGE
AND PROVIDE A
FINISHED LOOK.





DO IT BETTER

A HEAT GUN HELPS SPREAD COLORS IN THE RESIN; IT'S ALSO THE PERFECT TOOL FOR PREVENTING BUBBLES IN YOUR FINISHED PRODUCT. AFTER SPREADING THE MATERIAL, BLAST THE SURFACE OF YOUR PIECE WITH HEAT IN EVEN WAVES TO ELIMINATE BUBBLING.



ROCKY COAST Similar to split geodes, these easy-to-make coasters, *left*, are a perfect introduction to working with resin. To create a form for each coaster, on a silicone mat, pipe the outline of a rock shape using a glue gun and glue sticks. Apply several more layers to build up the edge, adding rocks and glitter if desired. Once dry, mix resin in individual small cups with a few drops of acrylic paint in purple, gold, blue, and white, stirring for even color. To form the look of rings, pour a small amount of one color in the center (A), repeating with remaining hues; the colors will spread and blend. Sprinkle with glitter. Finish with the white paint, swirling with a stir stick to create the look of movement. Apply a heat gun to blend colors and remove air bubbles. Let dry 24 hours, then paint the edges with gold metallic paint and line the bottoms with felt or clear feet to protect your furniture.



DO IT BETTER
KNOWN FOR CREATING A SHINY, TRANSLUCENT FINISH, RESIN CAN BE COLORED FOR ADDED INTEREST. CRAFTS PAINTS PROVIDE AN AFFORDABLE OPTION AND STORE WELL; POWDERED RESIN PIGMENTS CAN BE REPURPOSED TO MAKE SOAP AND EVEN MAKEUP.



RESIN MOLDS ALLOW YOU TO CAST INTRICATE SHAPES IN ANY COLOR. COAT WITH MOLD RELEASE SPRAY BEFORE FILLING WITH RESIN. ONCE THE MATERIAL STARTS TO HARDEN, INSERT A MACHINE SCREW IN THE BACK SO YOU CAN SECURE TO FURNITURE WITH A NUT.



DOODLE CRAFT Embellish a tabletop with a marking pen and drops of colorful resin, *above*. Draw organic shapes such as leaves, berries, and flowers, filling the surface with designs. If you're not sure of your doodling skills, opt for stamps or stencils. To create the three-dimensional effect, fill areas of the design by dipping the tip of an artist's brush into tinted resin and then gently tapping onto desired spot.

GLOSSY IMPACT Art paper, a canvas, and resin mix make for easy art, like the supersize succulent featured in the wall gallery, *this photo*. Working on a level, protected work surface, attach art paper to canvas with decoupage medium. Cover the paper with more decoupage medium, smoothing out bubbles. Let dry. Pour resin in the center of the art and let it run down the sides. Smooth the edges with your finger. Let dry for 24 hours, topping with a large box or plastic tub to prevent dust from penetrating the surface.



SECURE
BLUE

SW 6508

SHERWIN-WILLIAMS;
SHERWIN-WILLIAMS.COM



CUBIST DESIGN Dried and artificial foliage never fades when encased in resin, *right*. If working with one large object such as the artificial air plant and silk flower used here, center it in the bottom of a square mold. Mix resin. Before pouring into the mold, warm mixture with a heat gun to remove bubbles. Pour over the object; let sit 24 hours before removing from mold. For smaller flowers, fill the mold with resin, then insert foliage and blooms into the resin with a pointed stick.



PROTECT FAVORITE IMAGES WITH A CLEAR, DURABLE COVERING. TRIM YOUR PHOTO TO FIT INSIDE THE MOLD OF YOUR CHOICE, THEN POUR AND SPREAD RESIN UNTIL THE SURFACE IS COVERED.



DO IT BETTER

RESIN JEWELRY IS HOT HOT HOT! FIND OUT THE EASY WAY TO MAKE YOUR OWN WEARABLE ART ON PAGE 43.



RIVER STILL LIFE Capture the river rock table trend with this easy idea, *left*. Find a lamp with a glass base and removable top. Clean river rocks with soapy water and let dry. Arrange the rocks inside the lamp; pour resin over the center of the rocks so the material fills in around the rocks (A). Spray an artificial bloom with polycrylic spray; let dry and place over the rocks. Allow the resin to dry 24 hours.

FOR RESOURCES SEE PAGE 101.

FROM SMALL VOIDS TO BIG RIVERS



INTRODUCING MIRRORCAST™ AND RIVERCAST™ FROM **SYSTEMTHREE**

The epoxy for professional results. Trusted by skilled woodworkers all over the world for crystal clear casting projects. Learn more at systemthree.com



MADE IN LACEY,
WASHINGTON 98516



MEET THE MAKER

MIXED COLOR



Christi Johnson of Mixed Color takes us back to our roots with her nature-driven embroidery.

WORDS **RACHEL O'BRIEN**
PHOTOGRAPHS **JASON DONNELLY**



CHRISTI JOHNSON BEGAN WORKING ON TEXTILES AT A YOUNG AGE WITH HER MOM. ONE FASHION DEGREE AND 10 YEARS IN THE INDUSTRY LATER, SHE LAUNCHED A BUSINESS BASED ON CAREFULLY MAKING ONE ITEM AT A TIME.

THE MAKER: CHRISTI JOHNSON

This textile artist melds style and history with her sustainable fabric brand, Mixed Color.

Q: What's your favorite aspect of making embroidery?

A: I love developing the designs and choosing the colors. A lot of the time, the colors will really dictate the design. Sometimes I'll change the design based on the colors that I've selected after I've drawn it. I love that embroidery is this combination of drawing on clothes; it's basically painting with threads.

Q: What inspires the creation of your patterns?

A: Translating a story into an image is always really fun. Also, I love working with vintage

clothes because they kind of have a life of their own that they've already lived. When sitting with the pieces of clothing, they tend to tell a story of what they were and what they want to become. So certain pieces, like if there's a crazy vintage dress, I imagine who was the woman who used to wear this dress and what would she have loved to have on this dress.

Q: What is your favorite type of fabric to work with?

A: I always love working with denim. That's one of the things I'm drawn to—doing embroidery on jeans or denim jackets. That's one of my longtime loves.



embroidery
stencils!

A HANDMADE'S TALE

Talk about a maker: Christi creates each product herself. Rather than the fast pace she encountered in the fashion industry, she now considers herself part of the slow fashion movement, which aims for sustainability and reducing fabric waste. She often uses repurposed fabrics and dyes them with botanicals, such as dandelions and red onion skins. With a focus on getting back to basics, Christi also hopes to educate her consumers with plenty of information on botanical dyes and embroidery (along with beautiful buyables!) on mixedcolor.net.



MAKE IT

STITCH EMBROIDERY

MATERIALS

- Iron
- Fabric or garment of choice
- Iron-on embroidery transfer pattern
- Needle
- Embroidery floss in two or more colors

Step 1 Press the fabric you are embroidering. Place iron-on transfer sheet in desired location on fabric, and heat the design for a few seconds. Peel off the transfer sheet (A).

Step 2 Thread needle with 3 yards of floss and tie a knot in one tail. Starting from the back of fabric, push needle up through the fabric and pull thread taut. Apply a satin stitch to complete the pattern in that color (B).

Step 3 After completing one color, thread needle with another color and continue with a satin stitch (C) until the pattern is complete (D).

jazz up jeans!



"IN THE MODERN ERA WHERE EVERYTHING IS ALL ABOUT DOING THINGS AS FAST AS WE CAN, I THINK IT'S REALLY GREAT TO GO BACK TO THESE FORMS TO REMEMBER HOW TO MAKE THINGS WITH OUR HANDS."

CHRISTI JOHNSON, MAKER

HARBOR FREIGHT

QUALITY TOOLS AT RIDICULOUSLY LOW PRICES

1,000+ Stores Nationwide • HarborFreight.com

SUPER COUPON

6 FT. x 8 FT. ALUMINUM GREENHOUSE

NOW \$249.99
\$329.99

COMPARE TO PALRAM MODEL: 741353

SAVE \$350
ITEM 63354/47712 shown



LIMIT 1 - Coupon valid through 7/3/20*

Customer Rating



Root vent for climate control

Durable, all-weather aluminum frame

UV-coated polycarbonate panels for sunlight diffusion

Sliding door for easy access



SUPER COUPON

OVER 5,000 5 STAR REVIEWS
FREE WITH ANY PURCHASE

SUPER BRIGHT LED/SMD WORK LIGHT/FLASHLIGHT

- Super-Strong, Ultra-Lightweight Composite Plastic
- Magnetic Base & 360° Swivel Hook for Hands-Free Operation
- 3-AAA Batteries (included)
- 144 Lumens



ALL IN A SINGLE SUPER POWERFUL LIGHT

ITEM 63878/63991
64005/60566/69567
63601/67227 shown

COMPARE TO PERFORMANCE TOOL MODEL: W2364



Cannot be used with other discounts or prior purchases. Original coupon must be presented. Valid through 7/3/20 while supplies last. Limit 1 FREE GIFT per customer per day.

SUPER COUPON

20% OFF ANY SINGLE ITEM*



Limit 1 coupon per customer per day. Save 20% on any 1 item purchased. *Cannot be used with other discounts, coupon or any of the following items or brands: Inside Track Club membership, Extended Service Plan, gift card, open box item, 3 day Parking Lot Sale item, compression, floor jack, cables, storage cabinets, chains or cables, trailers, welders, Admiral, Ames, Atlas, Boser, Central Machinery, Cobra, CoverPro, Dayton, Diamondback, Earthquake, Fischer, Hercules, Icon, Jaxx, Lynx, Pulsion, Predator, Tailgator, Viking, Valcin, Zentech. Not valid on prior purchases. Non-transferable. Original coupon must be presented. Valid through 7/3/20.

HARDY

POWDER-FREE NITRILE GLOVES
PACK OF 100

• 5 mil thickness

SAVE 59%

COMPARE TO VENOM MODEL: VEN145

NOW \$5.99
\$7.99

AVAIL. IN SM, MED, LG, XL, XXL

ITEM 37050, 64417, 61363, 68496, 68497, 61360, 61359, 68498, 64418 shown



LIMIT 4 - Coupon valid through 7/3/20*

SUPER COUPON

Customer Rating



PITTSBURGH

130 PIECE TOOL KIT WITH CASE



SAE AND METRIC

Customer Rating



NOW \$29.99
\$39.99

LIFETIME WARRANTY

COMPARE TO ANVIL MODEL: A137HDS

SAVE 54%

ITEM 68998/63248/64080/64263/63091 shown



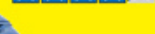
LIMIT 2 - Coupon valid through 7/3/20*

SUPER COUPON

7 FT. 4" x 9 FT. 6" ALL PURPOSE/WEATHER RESISTANT TARP



Customer Rating



NOW \$2.99
\$4.99

COMPARE TO BLUE HAWK MODEL: B68X10-Y

SAVE 65%

ITEM 69115/69121/69129/69137/69249/877 shown



LIMIT 4 - Coupon valid through 7/3/20*

U.S. GENERAL

30" 5 DRAWER MECHANIC'S CARTS

Customer Rating



NOW \$229.99
\$299.99

COMPARE TO Snap-on BLUE-POINT MODEL: KPBC10TBPS

Side tray sold separately.



ITEM 64031, 64720, 64722, 64721, 64033, 64059, 56429



LIMIT 1 - Coupon valid through 7/3/20*

ADMIRAL

12" DUAL-BEVEL SLIDING COMPOUND MITER SAW WITH LED AND LASER GUIDE

NOW \$179
\$199.99

COMPARE TO RYOBI MODEL: TSS120L

SAVE \$90

ITEM 64686



LIMIT 4 - Coupon valid through 7/3/20*

SUPER COUPON

HEAVY DUTY FOLDABLE ALUMINUM SPORTS CHAIRS

• Folding side table
• 3 side pockets

NOW \$19.99
\$29.99

YOUR CHOICE OF COLOR

BLUE GREEN **SAVE 50%**

ITEM 56719 ITEM 63066/62314 shown



LIMIT 4 - Coupon valid through 7/3/20*

SUPER COUPON

BIGFOOT PANEL WAGON

• 330 lb. capacity



NOW \$49.99
\$64.99

SAVE 45%

COMPARE TO ALEKO MODEL: TC4201

ITEM 69693/60570 shown



LIMIT 3 - Coupon valid through 7/3/20*

SUPER COUPON

SOLAR ROPE LIGHT

• 16 ft. of white LEDs

NOW \$7.99
\$12.99

SAVE 75%

COMPARE TO HAMPTON BAY MODEL: 84130

ITEM 63941/62533/64625/68353 shown



LIMIT 5 - Coupon valid through 7/3/20*

THUNDERBOLT

ALKALINE BATTERIES AA, AAA - 24 PK

Also available in C - 6 pk, D - 6 pk, and 9 volt - 4 pk sizes

SAVE 66%

COMPARE TO ENERGIZER MODEL: 551413526

\$14.94



Item 92404 shown

YOUR CHOICE \$4.99
\$7.99



LIMIT 5 - Coupon valid through 7/3/20*

CENTRAL PNEUMATIC

3 GALLON, 100 PSI OIL-FREE AIR COMPRESSORS

Air delivery: 0.6 CFM @ 90 PSI



NOW \$59.99
\$99.99

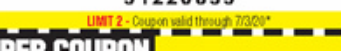
YOUR CHOICE

HOT DOG ITEM 69269 97080 shown

PANCAKE ITEM 61615/60637 95275 shown

COMPARE TO PORTER-CABLE MODEL: PCFP02003

SAVE 59%



LIMIT 2 - Coupon valid through 7/3/20*

HaulMaster

A. TWO TIER EASY-STORE STEP LADDER

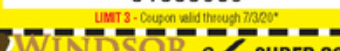
B. 18" WORKING PLATFORM STEP STOOL

YOUR CHOICE \$19.99
\$29.99

SAVE 40%

COMPARE TO WERNER MODEL: S322A-1

ITEM 67514



LIMIT 3 - Coupon valid through 7/3/20*

AVANTI

HVLP HANDHELD PAINT SPRAYER

Customer Rating



NOW \$69.99
\$99.99

SAVE \$30

ITEM 64934



LIMIT 2 - Coupon valid through 7/3/20*

PITTSBURGH SERIES 2

***1 SELLING JACKS IN AMERICA**

RAPID PUMP® 3 TON STEEL HEAVY DUTY FLOOR JACK

• Weighs 70 lbs.

NOW \$89.99
\$99.99

COMPARE TO POWERBUILT MODEL: 647593

SAVE \$45

ITEM 56621/56622/56623/56624 shown



LIMIT 2 - Coupon valid through 7/3/20*

SUPER COUPON

200 LUMEN LED SUPER BRIGHT FLIP LIGHT

• Wireless, tool-free and easy installation

Customer Rating



NOW \$3.99
\$1.99

COMPARE TO PROMIER MODEL: SW-SWITCH-12/24

SAVE 60%

ITEM 64189/64723/63922 shown



LIMIT 4 - Coupon valid through 7/3/20*

WINDSOR DESIGN

60" HARDWOOD WORKBENCH WITH 4 DRAWERS

Customer Rating



NOW \$119.99
\$149.99

COMPARE TO GRIZZLY MODEL: N723

Tools sold separately.

SAVE \$279

ITEM 63395/93454/69054/62603 shown



LIMIT 1 - Coupon valid through 7/3/20*

PITTSBURGH

32 PIECE SCREWDRIVER SET

LIFETIME WARRANTY

Customer Rating



NOW \$5.99
\$7.99

COMPARE TO PERFORMAX MODEL: 48021

SAVE 81%

ITEM 61259/90764 shown



LIMIT 5 - Coupon valid through 7/3/20*

*Original coupon only. No use on prior purchases after 30 days from original purchase or without original receipt. Valid through 7/3/20.

At Harbor Freight Tools, the "Compare to" price means that the specified comparison, which is an item with the same or similar function, was advertised for sale at or above the "Compare to" price by another national retailer in the U.S. within the past 90 days. Prices advertised by others may vary by location. No other meaning of "Compare to" should be implied. For more information, go to HarborFreight.com or see store associate.



COOL TOOLS

CUT LOOSE

Watching the grass grow becomes a pleasure with new, better lawn-control products.

WORDS **LINDSEY M. ROBERTS**



1. LANDSCAPER'S HORI HORI A tool no lawn enthusiast should be without, the hori hori is at once a knife, trowel, and saw—ready for any persistent weed. The aircraft alloy steel base is corrosion-resistant. \$58; shopterrain.com



2. SCOTTS WIZZ HAND-HELD SPREADER WITH EDGE GUARD TECHNOLOGY

Save your wrist with this battery-powered fertilizer spreader. The reservoir will hold enough grass seed, fertilizer, and weed-control products to cover up to 2,500 square feet of lawn. You can even use it for ice melt in the winter. \$20; amazon.com



3. WORX LANDROID M 20V CORDLESS ROBOTIC LAWN MOWER

Able to cut up to a quarter-acre on a charge, the Landroid is one smart mower. It mows when programmed, but if rain hits, it wisely retreats to its charging base and notifies you via a phone app. \$999; target.com



4. CLARINGTON FORGE TREADED SPADE

This is a spade that can tough out any project—solid steel extends far up the handle, preventing breakage. Blade treads help feet with digging, and the wood D-shape handle helps hands take care. \$88; shopterrain.com



5. DEWALT DCBL770X1 FLEXVOLT 60V MAX LITHIUM-ION BRUSHLESS HANDHELD BLOWER A power tool that's ergonomic and light on your arms? Yes, please. Blow debris with ease at an air volume of 129 miles per hour or with the included nozzle at 175 miles per hour. **\$299; [amazon.com](https://www.amazon.com)**

light & powerful

6. FISKARS LEAF RAKE

Do yardwork in double time with this lightweight aluminum rake. Pile leaves, then use the detachable head to scoop everything into bags. **\$25; [fiskars.com](https://www.fiskars.com)**



7. GORILLA CARTS POLY GARDEN DUMP CART WITH STEEL FRAME

A 600-pound weight limit means almost any gardening load can be hauled with this cart, while the quick-release system makes dumping quick. Pneumatic tires bump over all terrains with ease. **\$100; [target.com](https://www.target.com)**

8. REDUCTION RATIO ELECTRIC LEAF MULCHER

Get that leaf pile ripped to shreds. Sun Joe's shredder mulches any pile to one-sixteenth its original size—without the noise or fumes of a gas-powered shredder. **\$129; [gardeners.com](https://www.gardeners.com)**





9. THE WEED SNATCHER

Spraying or pulling aren't your only options for getting weeds out of driveway cracks. Ruppert Garden Tools developed a telescoping pole with two different heads that roll along, removing unwanted intruders. *\$36; thegrommet.com*

10. RYOBI ONE+ 18V LITHIUM-ION CORDLESS STRING TRIMMER/EDGER

This string trimmer becomes an edger with a tilt of the head. Adjust cutting width from 11 to 13 inches and don't worry about rushing the job—the battery has a long run time. *\$129; homedepot.com*



11. GREENWORKS PRO 60-VOLT BRUSHLESS LITHIUM ION PUSH 21-INCH CORDLESS ELECTRIC MOWER

Get to work early on a Saturday morning because this quiet electric mower has a 60-volt battery system that can take on tough projects without the hassle of gas or cords. It offers mulching, rear bagging, or side-discharge options. *\$399; lowes.com*



12. AEROCART 8-IN-1 WHEELBARROW

Tip up this lightweight wheelbarrow and it becomes a bag holder, dolly, extended dolly, or a cylinder carrier. Tip it back down and it's a yard cart, bag holder, plant mover, and trailer tote. *\$170; worx.com*



on-the-go
storage!

13. MOBILE TOOL STORAGE CADDY

Store and roll garden tools with a 5-gallon bucket on wheels. The fabric pocket organizer holds small tools, while a ring on the handle keeps tall tools steady. Throw plants or dirt in the bin and go. \$100; gardeners.com



14. B-HYVE WIFI TIMER Forget to schedule the sprinklers before vacation? Control your lawn watering from your phone with a smart sprinkler controller—so smart it can adjust even without you, delaying watering when rain is in the forecast. \$109; homedepot.com

Perfect for hems & home décor,
with no sewing or ironing required!



This permanent, press-on adhesive forms an instant bond on fabrics, felt and trim.

No need to sew or iron – simply press it on and go!

Machine washable and dryable.

©Katarzyna Bialasiewicz via Canva.com

Available at Amazon, Hobby Lobby, JoAnn & Walmart.



Learn more at thermoweb.com

therm·o·web
adhesives, interfacing and more...

WHAT TO DO WITH

CORDS & STRAPS

The same stuff that can help you scale a mountain or tie down a tarp reaches new heights when put to work embellishing your furniture, walls, and more decor.

PROJECTS **MOLLY REID SINNETT**
PHOTOGRAPHS **CARSON DOWNING**
WORDS **NICOLE SHAPIRO**



DOUBLE KNOT
PARACORD TO
COVER THE CLAMPS,
THEN HEAT-SEAL THE
ENDS TO FINISH.





CONSOLE COVER Stretchy cord adds a fun look to furniture while keeping items accessible, *left*. First, determine how much space you want to cover with the cord. Place masking tape on the top of the unit and mark an odd number of spots at 1-inch intervals for the holes. Repeat on the bottom of the unit. Using a bit slightly larger than your cord, carefully drill each hole, then remove the tape and wipe off any dust and splinters. Heat-seal one end of a length of 1/8-inch bungee cord, then thread the cord through the holes as shown, starting at the top. Add a decorative bead and knot at one end, then pull the cord taut, trim and repeat on the opposite end. Heat-seal both ends.

STRIKE A CORD Add a unique design to your walls with colorful cords, *opposite*. Use a pencil and a level to mark spots for the knobs (we used front-mount ceramic drawer pulls) 2 inches apart in vertical lines. For a 90-degree corner, first mark the location of the knob for the bottom line, then measure up 2 inches and over 2 inches (toward the inside of the angle) and mark again. Repeat for each line. Install the knobs. Run the cord (we used about 12 feet of 1/4-inch Para-Max cord for each line) along the pattern, wrapping it around each knob and leaving the ends free. To keep long expanses of cord from sagging, pin in place with a brass nail. To finish the ends, secure the cord in clear plastic 1/4-inch cable clamps and screw to the wall a few inches beyond the first and last sets of knobs.

KNOW YOUR KNOTS

You don't have to be a sailor to tie an impressive knot. These three may look complicated, but they are easy to learn.

Watching is the best way to learn to tie a knot, so we searched the name of the knot online, then watched a video on how to tie it. Search for yourself, then use these knots in your designs.

**CELTIC
BUTTON
KNOT**



**TWO HALF
HITCHES**



**DOUBLE
FISHERMAN'S
KNOT**





IN SUSPENSE Take shelving to new heights with this peg and cord technique, *left*. Cut solid maple boards to the desired length and seal with clear stain. When dry, mark three holes 2 inches in from each end: one centered widthwise and two 1 inch away on either side. Drill the holes using a bit slightly larger than your cord. Mount three coat pegs (we used Three by Three's Hob Knob wall pegs) in a random arrangement, centering one of the pegs directly above your shelf location. Working at one end of the board, thread lengths of 5 mm 750 paracord (you will need quite a bit of slack to tie the knots, so use at least 3 feet of each cord) down through the holes from the top and tie off using a decorative Celtic button knot (A). To hang the shelf, wrap the middle cord around the centered peg (B), then thread it through the opposite hole. Clamp the cord to hold it in place. Repeat with the other two cords. Adjust for length as needed, then tie a Celtic button knot at both ends of each cord. Trim excess and heat-seal the knots. Use a paracord smoothing tool to flatten and "lock" the knots in place.

WHY KNOT Use cords and cool knots to upgrade a simple chair, *right*. Decorate the back of the chair with 550 white paracord tied in a zigzag ringbolt hitch (for how-to, search online for zigzag ringbolt hitch instructions). Tying with three strands creates the cool pattern. Tie off the ends with a double knot and heat-seal.



LEG DAY To embellish the chair legs, *this photo and opposite, bottom right*, place a piece of masking tape vertically on the outside of each leg. On the first leg, mark for holes 1 inch apart starting 2 inches from the floor. Repeat on the diagonally opposite leg so the holes match. Do the same on the remaining legs but starting your marks 2½ inches from the floor so the cords can cross freely in the middle. Using a bit slightly larger than your cord, drill holes, making them parallel to the floor and in the direction of the opposite diagonal leg. Trim the end of a piece of 550 white paracord at an angle and heat-seal, then string through a pair of corresponding holes. Cut and tie the cord, pulling it taut. Repeat. Trim excess cord close to the knot then heat-seal, taking care not to get the flame too close or it will scorch the cord.

USE A TINY ALLEN WRENCH TO HELP PUSH THE CORD THROUGH THE HOLES.





LAWN CHAIR REFRESH Update an old lawn chair with bands of colorful cords, *right*. For each color, you'll need 100–150 feet of 550 paracord. First, cut or unscrew old webbing from your chair and clean the frame with a wet rag. Secure your first color to the support bar at the base of the back of the chair by tying the cord in a double knot. Loop the cord over the back of the chair, back to front. Pull the cord under the support bar and to the front of the seat, again looping from back to front. Wrap behind the center support bar again and repeat for desired number of loops (we used about 10 for each vertical color). Tie the second color to the first with a two half hitches knot, *page 23*, at the bottom of the chair so it's out of sight. Be careful not to pull the paracord too tight or the chair will not stay open. Repeat for all vertical rows, then double knot the cord to the support bar. For the horizontal colors, secure the cord to the chair frame and weave between the vertical sections, tightening as you go. When chair is complete, tie the cord to the frame, then trim and heat-seal all ends, flattening with a paracord smoothing tool to lock the knots in place.



DO IT BETTER

TO KEEP LONG LENGTHS OF CORD UNDER CONTROL, CONSIDER A WINDIT WIZARD (\$7; PARACORDPLANET.COM). THIS HANDY TOOL CAN EASILY HOLD 100 FEET OF CORD AND HAS FEATURES LIKE A RULER, A BLADE, AND A LOCK FOR LOOSE CORD ENDS.

PERKED-UP PENDANT

Gussy up a basic wire shade with nylon webbing strips, *this photo*. Our lampshade dictated the design of this project; adapt the design to fit your wire frame. First, determine the number of strips you'll need and the length. Ours are long enough to rest on the wire below when folded in half and glued in place. Cut strips of flat nylon webbing and heat-seal each end. Starting at the bottom of the frame, loop a strip around the wire and hot-glue it to itself. Repeat until the lampshade is complete. If your frame allows, finish the top by weaving a strip of webbing around the section and gluing it to itself.

BECAUSE THE NYLON STRIPS CAN MELT, USE AN LED LIGHTBULB AND MAKE SURE THE STRIPS DO NOT TOUCH THE BULB DIRECTLY.



WEAVE YOUR WAY Colorful woven strips brighten a plain bookcase, *this photo*. First, plan your pattern and determine the number of vertical webbing strips you'll need to cover the width of the area. To find the length of the strips, measure the height of the shelf and add 8 inches. Cut strips of flat nylon webbing and heat-seal each end. Starting in the center, wrap a strip around the bookcase frame and hot-glue the end of the strip to itself on the inside of the unit. Secure with clamps while the glue dries. Continue with remaining vertical strips. Repeat for the horizontal webbing, weaving between the vertical strips and gluing to the other strips if necessary.





MAD FOR PLAID We wove our straps using the classic over-and-under technique you learned in grade school, *left*. The finished design looks like plaid because we combined three strap widths: the white is 3 inches wide, the purple and pink are 1½ inch wide, and the olive green is 1 inch wide.

DO IT BETTER

REMOVE THE SHELVES FOR EASIER ACCESS WHEN WEAVING. FOR SHELVES THAT CAN'T BE REMOVED, CONSIDER SECURING THE STRIPS TO THE BOTTOM OF THE SHELF WITH HOT GLUE OR UPHOLSTERY TACKS (FOR WOODEN SHELVES).

SPECIAL THANKS TO PARACORD PLANET, STRAPWORKS

FOR RESOURCES SEE PAGE 101.

PULSE™ 62V BATTERY-POWERED TOOLS POWERED BY LIPO™ 62 VOLT INTERCHANGEABLE LITHIUM-ION BATTERIES



CHECK OUT OUR GROWING LINE! ► Lawn Mowers • Trimmer Mower • Snow Thrower • Blower • String Trimmer • Chainsaw • Pole Saw • Hedge Trimmer

FREE SHIPPING | **6 MONTH TRIAL** | **EASY FINANCING**

SOME LIMITATIONS APPLY. GO ONLINE OR CALL FOR DETAILS.

Go Online or Call for FREE Catalog & Special Offer!

DRbatterytools.com

TOLL FREE **888-212-8855**



SLEEK SYSTEM

Turn underused garage space into an organized haven for storing sports equipment, travel gear, pantry essentials, and more.

PROJECTS **SAMANTHA PREGENZER** PHOTOGRAPHS **PAUL DYER** WORDS **CHELSEA EVERS**



ON A ROLL When it comes to storing bulky gear, casters are a game changer. Simply slide out this wire mesh bin and toss balls, toys, and duffel bags inside. At more than 2 feet wide, it can handle loads of equipment. Silver Mesh Rolling Storage Bin, \$50; containerstore.com

WHEELS UP Save precious floor space when you use this clever hook to hang bicycles from the wall. With a 30-pound capacity and a vinyl-padded tip, it can safely hold your mountain bike or prized beach cruiser. Locking tabs keep the hook affixed securely to the corresponding track. Vertical Bike Hook, \$10 (affixes to GearTrack Channel, starting at \$24); gladiatorgarageworks.com



GOOD SPORT Clear and mesh bins make it easy to keep balls, gloves, and helmets accessible for the next game. Sort equipment in a way that makes sense for you—either by activity, size, or family member—then choose a closet shelving system that fits your needs. We organized gear by sport and used an Elfa system from The Container Store to create a custom sports storage solution.





ROOM TO GROW When creating a storage plan, think about access. Kids' toys should be stowed where it's easy for little hands to reach, while seasonal clothing and holiday decor can be placed up high. A bench offers a quick spot to put on sneakers, and a lightweight table gives little ones a place to play while parents work in the garage.





PANTRY PARTNER The garage is often an overlooked option for storing seldom-used kitchen appliances and bulky pantry items, but it's an easy way to double or triple tight storage space. Stock shelves with nonperishables like bottled water alongside food storage products, paper goods, and other items you've stocked up on. Take a hard look at the items you have stored in your kitchen cabinets—is that shelf full of vases and baskets really a good use of space? Relocate rarely used items to the garage to make the best use of drawers and cabinets inside.



IN THE CLEAR Sleek and streamlined, these plastic storage bins include handles for quick transport and a notched front for easy access. They're ideal for carrying cans and bottles inside to restock the fridge. Large Clear Plastic Storage Bin with Handles, \$6; containerstore.com



STOW & SLIDE Successful garage storage systems make room for all the odds and ends that come with homeownership—paintbrushes, glues, screws, and so much more. If you don't need or want a full tool bench, employ a few pullouts to organize small stuff. We installed a set of drawers from the Elfa closet system and used acrylic trays inside to keep supplies separated and easy to find.



DROP ZONE No mudroom? No problem. Just outside the door into your house, set up a get-ready zone with shelves for shoes, a corkboard for bills and permission slips, and hooks for bags, coats, or umbrellas. Bulky suitcases and bags stored on high shelves free up space in hall and bedroom closets.



SHOE IN Keep muddy footprints out of the house with a designated garage area for wet shoes. This durable polypropylene tray keeps moisture contained and hoses off for quick cleaning. Boot Tray, \$6; bedbathandbeyond.com



BASKET CASE Banish entryway clutter with this tall basket, which features sturdy handles and bamboo reinforcements that make it easy to carry. Swap contents each season—stack sandals in the summer, then stow scarves and hats when cold weather hits. Strapping Basket, \$12; containerstore.com

FOR RESOURCES
SEE PAGE 101.

DIY Q&A

HANDY GIRL

My DIY list this season is long and mighty, both inside and outside. But Handy Girls, we can do it together.

WORDS **KELLY ROBERSON** ILLUSTRATIONS **ANKE REGA**



BIG DREAMS, SMALL STEPS

Handy Girls, my head is in the clouds, dreaming up ways to make my home more functional, fun, and fresh. To get closer to those dreams, I'm taking small steps to fix things so I can create a more beautiful, welcoming home. Here's what's on my list.

Handy
Girl

ORDERING ONLINE

DURING OUR LAST BATHROOM RENO, WE ORDERED SEVERAL BIG-TICKET ITEMS. WE SHOPPED LOCALLY FOR SOME ITEMS, BUT FOR OTHERS, WE CHOSE ONLINE OPTIONS TO GET EXACTLY WHAT WE WANTED. HERE'S WHAT TO CONSIDER BEFORE YOU CLICK "BUY."

Measure, measure, measure. Read all the specs carefully and thoroughly. How big is the box? How big is the item, inside and out? Does that measurement include its feet? The worst thing is to be ready to install a sink and find out it doesn't fit.

Figure all the charges before you order. The vent hood might look like a great deal, but it may not be worth it if shipping more than doubles the cost.

Check that shipping dates align with your needs. If it comes early, do you have a safe spot to store it? Is delivery door-to-door, or will the shipping company bring it inside to the room where you need it?

Verify the return policy. Items break en route. Sometimes they just don't work in your space. What is your retailer's return policy and timeline?



Closet Clues

BURSTING AT THE SHELVES, HOOKS, AND HANGERS? IT MAY BE TIME TO SHOW YOUR CLOSET SOME LOVE AND REWORK STORAGE AND ORGANIZATION WITH THESE HANDY GIRL TIPS.

Give your floor a lift. Add a second layer of shoe shelving.

Where's your dead space? Maximize an odd empty area by installing a few hooks for slender items like belts.

Go high—on top of existing built-ins, for example.

➔ **Get organized!** Check out our inspiration for closet makeovers: [BHG.com/ClosetMakeover](https://www.bhg.com/closetmakeover)

CAN YOU BE GREENER OUTSIDE?

HEY, DIYERS, WE CAN ALL DO MORE TO GREEN OUR FIX-IT-UP ROUTINE. START WITH YOUR OUTDOORS FOR AN EASY SOLVE.

BUYING FOR YOUR OUTDOOR SPACE?

CHECK THE MATERIALS LIST. IS IT MADE OF SOMETHING NATURAL? GREAT! BIODEGRADABLE IS BETTER. BARK ADDS BACK TO THE SOIL AND HELPS SLOW WATER EVAPORATION AND AVOID RUNOFF. ELIMINATE USE OF ANYTHING OTHER THAN NATURAL COMPOST AS FERTILIZER.

PLANT FOR YOUR CLIMATE.

IF YOUR GREENERY CAN'T SURVIVE WITHOUT EXTRA WATER, IT'S NOT MADE FOR YOUR LANDSCAPE.

SAVE YOUR WOOD FLOORS?

IT DEPENDS.

If the floors have been refinished several times, they might be at the end of their lives and need replacement, not refinishing. Also, if more than one-third of the flooring is severely damaged—chipped, stained, or otherwise in bad shape—it might be better to replace it all.

If you decide your floors are worth saving and you're up for tackling the task yourself, great! You can rent all sorts of equipment and find plenty of help online. Whatever you do, remember you can't be on the floors until they're done drying—and that might be at least a week or two depending on your finish choice. Factor that into your project timeline.

LOVE FOR YOUR PAINTBRUSHES

I'VE TOSSED MORE PAINTBRUSHES THAN I CARE TO ADMIT. DON'T MAKE MY MISTAKES; PRACTICE PROPER BRUSH CARE.



➡ **CLEAN THE BRUSH EVERY TIME, NO MATTER WHAT. IT'S A FEW MINUTES THAT WILL SAVE YOUR BRUSH.**

➡ **WASH ALL THE WAY TO THE HANDLE END OF THE BRISTLES. PAINT CAN LODGE THERE.**

➡ **WORK A DROP OF DISH SOAP INTO THE BRISTLES TO LOOSEN PARTIALLY DRIED PAINT.**

➡ **STORE BRUSHES IN A CLEAN, DRY PLACE, PREFERABLY BY HANGING THEM FROM THE HANDLE.**

So You Want to Install a Shelf

HERE'S HOW, IN THREE EASY STEPS.

- 1** Find your spot. Use a stud finder to locate studs to screw shelf brackets to, boosting the weight of items you can safely display.
- 2** Mark placement and make it level. Lightly pencil marks at the shelf ends and the installation holes.
- 3** Drill starter holes, then attach the brackets. Install the shelf by screwing to the brackets.



HINGE HELP

YOU MIGHT HAVE THE MOST BEAUTIFUL CABINETS IN THE NEIGHBORHOOD, BUT IF YOUR HINGES ARE DATED AND WORN, THE CABINETS CAN FEEL DATED. NO NEED FOR NEW HARDWARE—PAINT COMES TO THE RESCUE. HERE'S HOW.

REMOVE ALL THE HINGES AND SCREWS.

TAKE PHOTOS TO REMIND YOU WHICH PIECES GO ON WHICH DOORS.

CLEAN THE HINGES.

DENATURED ALCOHOL WORKS WONDERS.

LAY THE HINGES ON A CLEAN SURFACE.

USING METAL PRIMER IN A WELL-VENTILATED AREA, SPRAY THE HINGES ON ONE SIDE. LET DRY AND SPRAY THE SECOND SIDE. SPRAY THE SCREWS TOO.

ONCE DRY, PAINT THE HINGES WITH A FINISH OF YOUR CHOOSING.

PLANT + POT = *PERFECTION*



1. **Pick a container** that's bigger than your plant's root ball by several inches; drainage holes are a must.
2. **Fill halfway** with potting soil.
3. **Remove the plant** from its original container.
4. **If the plant is root-bound**, scrape the sides of the root ball to loosen the roots.
5. **Place the plant in the new container.** Fill with additional potting soil to about a half inch from the top.
6. **Loosely pat down the soil.** Water thoroughly.

Yes, You Should Use Drip Irrigation!

IT'S A GREAT WAY TO HYDRATE PLANTS IN YOUR GARDEN WITHOUT WASTING WATER BY ENABLING YOU TO DIRECT WATER RIGHT TO THE ROOTS. THE SUPPLIES ARE PRETTY SELF-EXPLANATORY: HOSES CONNECT WITH T-SHAPE PIECES. PLUS, YOU CAN ADD TO THE SYSTEM AS NEEDED. YOU'LL FIND SUPPLIES AT ANY HOME IMPROVEMENT STORE.

EST 1928

WOODCRAFT®

Over 75 Stores Nationwide – Stop In And Visit With Us!

**QUALITY WOODWORKING TOOLS •
SUPPLIES • ADVICE®**



WoodRiver® Tools Make Gardening A Pleasure

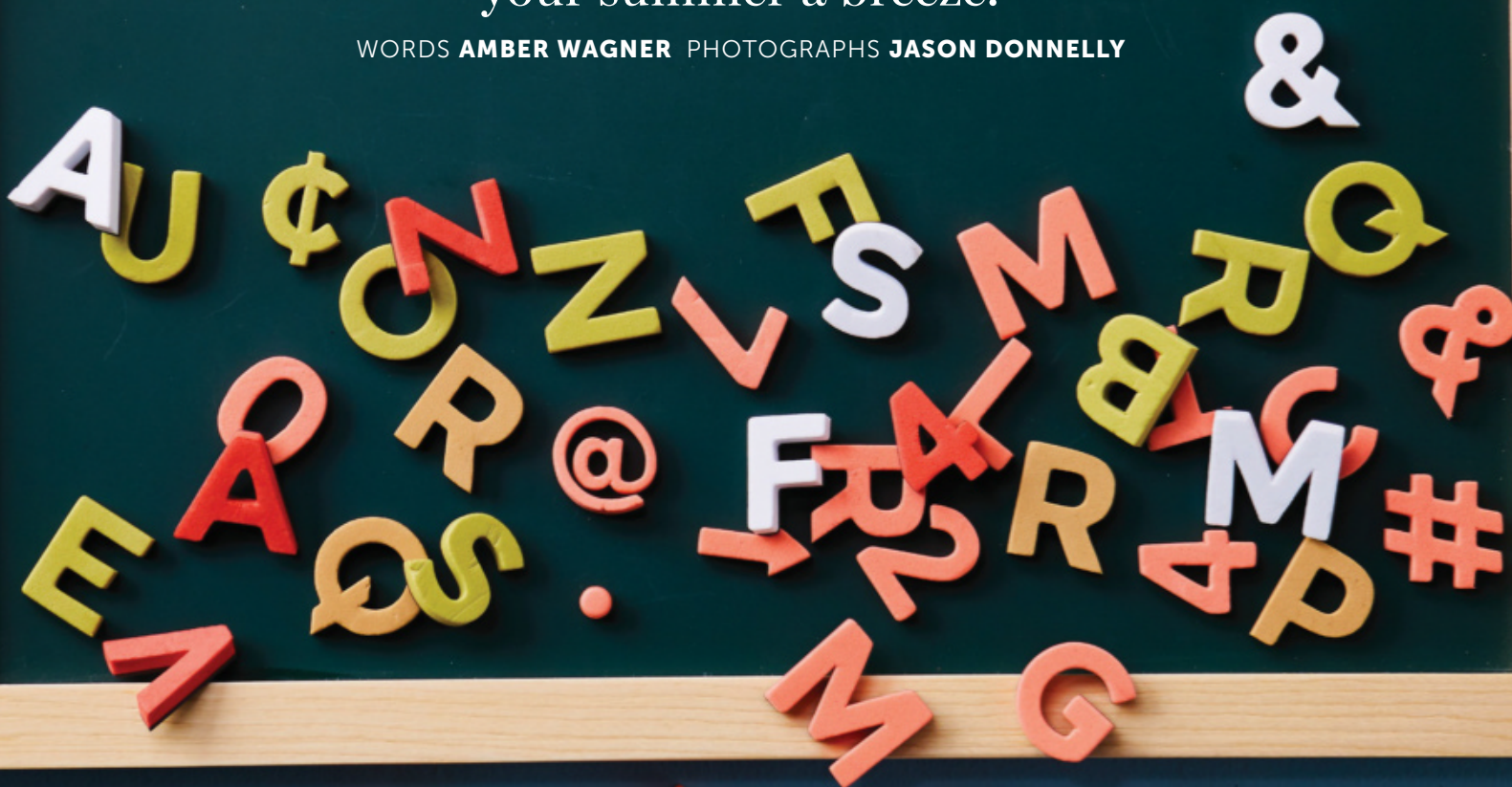
Build a garden transplanter, cultivator and weeder you can count on with this WoodRiver® Kit constructed from durable cast aluminum that has been polished to a high sheen. Turn a unique handle from wood or man-made material sold separately.

STUFF WE LOVE

ON OUR RADAR

Sunshine season is here and we have a whole collection of cool products to make your summer a breeze.

WORDS **AMBER WAGNER** PHOTOGRAPHS **JASON DONNELLY**



Attract attention with modern magnetic memos that spell fun for your space. Available in multiple colors and styles, these soft, flexible fonts will get your message across. **Magnetic Letters and Board**, from \$20; thetypesetco.com

1. Instant retro photos! No need to carry a bulky camera around to take those nostalgic square photos. This photo lab lets you print pictures straight from your phone. **Polaroid Lab, \$129;** us.polaroidoriginals.com

2. The dynamic duo is at it again, this time tackling all things creative. Amy Poehler and Nick Offerman, hosts of the hit show *Making It*, guide you through 25 projects sprinkled with punny quips to have you laughing while you craft. ***The Making It Guide to Crafting* book, \$25;** abramsbooks.com

3. Staying grounded was never easier. Sleek recycled-plastic anchors tether your gear for worry-free outdoor adventures. The protective cover slips into the top ring for added leverage while installing. **Orange Screw Ground Anchor, \$7;** orangescrew.com

4. Chic copper shines indoors and out. Portola Paints Coppersmith finish with real copper particles adheres to almost any surface. Leave it gleaming or patinate with the Patina Solution. **\$55 for quart;** portolapaints.com

5. The Ryobi 3/8-inch Crown Stapler is a cordless powerhouse. Anti-fatigue compression drive does the hard work for hands while adjustable drive depth and wire guide attachments help you get the job done right. **\$80 (tool only, as shown here);** homedepot.com



①

②



③



④



⑤





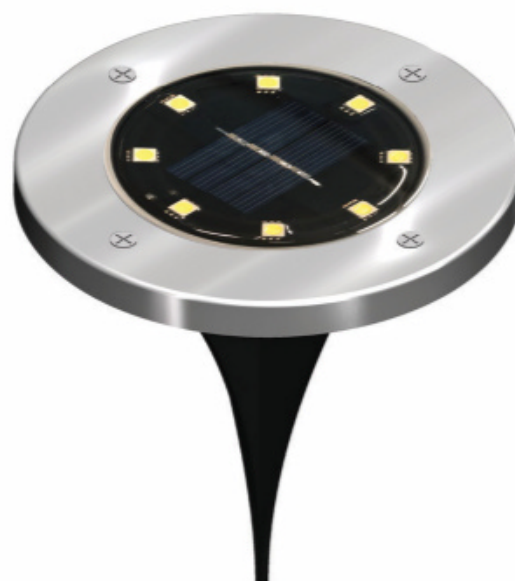
6

6. Where there's smoke there might be delicious grilled grub! Love smokers but don't want to fork over the cost for one? This reusable steel bag turns any grill into a smoky sensation. Fill with wood chips and toss on the grates for brag-worthy barbecue. **Smoking Pouch, \$20;** thesmokist.com



7

7. Beautiful photography takes you around the world as it guides you through 15 gorgeous knitting patterns. Global inspiration keeps the focus on slow fashion and conscious creating. **We Are Knitters book, \$25;** abramsbooks.com



8

8. Add drama to your outdoor space, no strings attached. In-ground solar LED fixtures install in minutes without the hassle of wiring. Weekend warriors will have a whole lot of extra time for other projects while their yard is looking fabulous. **In-Ground Solar LED Uplights, 12 for \$37;** suncolighting.com



9

9. Place and plug in a Smartpond fountain for a soothing light display in your backyard pond. Change the look of your water feature with 16 color options available on the remote. Sit back, relax, and enjoy the show! **Smartpond Floating Fountain, \$129;** lowes.com



10

10. Hanging art was never easier! Choose a frame size and style, then put some art in your cart or use your own. Magnetic wood frames snap together with ease for a light and modern way to spruce up your space. **Hanger Frames, from \$8;** hangerframes.com

11. Move over, bulky platform carts. The collapsible Dozop dolly weighs in at just under 6 pounds but holds up to 250. From carting boxes to hauling furniture, this workhorse will keep you moving. **\$50; dozop.com**

12. Glitter is guiltless when it's biodegradable. No microplastics here, just renewable plant-base glitz in a softer new way to add sparkle and shine. It's available in small and chunky pieces in 12 eco-friendly colors. **Biodegradable Glitter, from \$10; glitterrevolution.com**

13. Just blend and pour the expanding polyurethane foam to set posts, straighten mailboxes, and more. It sets in three minutes and does the job of two 50-pound bags of quick concrete. **Sika PostFix, \$15; retail.usa.sika.com**

14. Grow something beautiful out of yesterday's pollution. Bloem Ocean Series planters are made from recycled ocean plastics. Planters come in a variety of sizes and a variety of colors. **From \$2 to \$10 each; lowes.com**

15. Choose a different kind of screen time. Learn to make your own printing screen, then tackle 12 projects in this beautifully illustrated guide. ***Beginner's Guide to Screen Printing* book, \$16; penguinrandomhouse.com**



11



12



13



14



15



16



17



18



19



20

16. When painters tape won't do the job, Peel-Tek is here to help. Brush on this rubbery coating to shield surfaces from paint, chips, or scuffs, then peel away. It's available in a small crafter's version too.

Peel-Tek, from \$15;
peel-tek.com

17. For good, clean fun, learn the art of melt-and-pour soaps—no lye or messy chemicals needed.

Work your way through 50 recipes for easy soapmaking with natural herbal and essential oils.

Easy Homemade Melt & Pour Soaps book, \$22;
pagestreetpublishing.com

18. The honey scent of beeswax candles can't be beat, and this kit helps you make them yourself. Roll your way to candle creativity with the 12 sheets of natural or colored wax and wicks.

Taper Candle Making Kit, from \$22;
waxingmoonshine.etsy.com

19. Frustration-free watering is here! The lightweight FITT-flow hose features 60 feet of super-durable watering power. Complete with a handy storage bag and custom nozzle, this anti-kink hose will give you more time to focus on those pesky weeds. **FITT Flow, \$60;** fitt-usa.com

20. Flexible waterproof lighting goes wherever you do. Tie it, stick it, bend it—this magnetic strip is easily powered by any USB source. Stashed in its storage bag, it becomes a handy lantern.

Luminoodle, from \$20;
powerpractical.com

21. Preserve botanical beauty in wearable form. Mix and pour to design your own statement jewelry pieces. Kit includes resin, mold, and pressed flowers. Choose one of four styles, such as beads or bangles.

DIY Resin Jewelry Kit, from \$38; spotteddogfarm.com

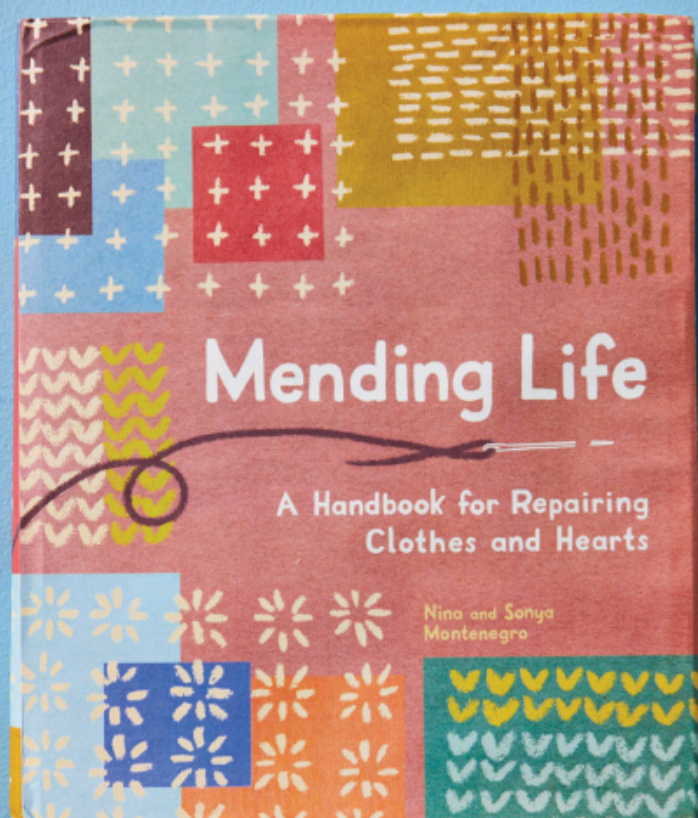
22. A flat-pack snack sack. The Bear Bowl cook pot is so light you might forget you're hauling it until you're eating a tasty hot meal on the trail. The thin folding cube is available in three sizes and can be used with most cookstoves. **From \$30; bearminimum.org**

23. Paint by number is all grown up. Kits are shipped with a personalized linen canvas and custom paint pots. Choose your favorite pooch, family photo, or memorable vacation shot to commemorate as art. **Paint Your Own Photo, \$80; masterpiecebynumbers.com**

24. Repair, reuse, renew! Don't toss that snagged sweater. Learn to cherish and mend torn clothes instead. Part instruction manual, part inspirational guide, *Mending Life* explores how fixing your stuff can strengthen your self as well. ***Mending Life* book, \$25; sasquatchbooks.com**



24



DR[®] Lawn & Garden Edger

PROFESSIONAL EDGES MADE EASY!

4 WHEEL DESIGN for stable and precise operation.

CURB HOP FEATURE lets you straddle a curb, with one wheel at street level, for stable, precise cuts.

PIVOTING BLADE allows for bevel cuts along garden borders (up to 15°).



TADA8X © 2020

FREE SHIPPING
6 MONTH TRIAL

Some Limitations Apply

Go Online or Call for **FREE Info Kit!**

DRpower.com/edger

TOLL FREE **877-220-1524**



SEW EASY

TABLE LINENS

Craft a set of place mats and a coordinating runner from today's oilcloth—a wipe-clean coated cotton that can stand up to messy eaters and drinkers (we're looking at you, red wine) and still look fabulous.

PROJECTS **LACEY HOWARD & SONJA CARMON**
PHOTOGRAPHS **JAY WILDE** WORDS **LACEY HOWARD**



MAKE IT

RUNNER & PLACE MATS

MATERIALS

- Oilcloth (we used 1 yard for 18x54-inch runner and 1 yard for four 12x18-inch place mats)
- Thin cotton (we used 1 yard for 18x54-inch runner and 1 yard for four 12x18-inch place mats)
- Straight pins
- L square or ruler
- Tailor's pencil or chalk
- Sewing machine
- Coordinating thread
- Iron
- Fringe

Step 1 Lay out 1-yard pieces of oilcloth and cotton combinations with right sides together. Pin around edges (A).

Step 2 Measure size for mats and/or runner, adding 1 inch to width and length of each for seam allowance (B) (our finished runner is 18x54 inches and each place mat is 12x18 inches). Mark measurements (C) and pin inside marks. Cut out shapes with the two fabrics pinned together.

Step 3 Stitch perimeters of each piece with $\frac{1}{2}$ -inch seam (D). Leave an opening of about 8 inches along one side. Be sure to stitch forward, reverse for a few stitches, then forward again at the start and stop of each run. Trim corners (E), being careful not to cut stitching!

Step 4 Turn pieces right side out. Press flat using your hands or gently using an iron on the cotton fabric only. Do not iron oilcloth.

Step 5 Turn under raw edges where left open (F) and pin. Add fringe, if desired. We used fringe on the short ends of the runner but not on the place mats. (Because, food.) Pin fringe in place, tucking under cut ends. Topstitch perimeter of the piece using the presser foot as a guide (G) $\frac{1}{4}$ inch from edge. The topstitching (H) will give you a finished look, close the opening used for turning, and attach the fringe (I).



AN 8-INCH OPENING
ALLOWS YOU TO
COMFORTABLY FIT
YOUR HAND INSIDE
WHEN TURNING THE
PIECE RIGHT SIDE OUT.

DO IT BETTER

USE QUILTER'S COTTON AS THE BACKING FOR YOUR OILCLOTH TABLE LINENS. PAIRING THE THIN MATERIAL WITH THICK OILCLOTH KEEPS EACH DUO—ESPECIALLY ONCE TRIM IS IN THE MIX—EASY TO SEW. CHOOSE TRIM DESIGNED TO BE SEWN INSIDE THE SEAM OR ON TOP (LIKE THE FRINGE WE USED HERE).



OILCLOTH TIPS

A MAINSTAY OF THE EARLY 20TH CENTURY, THIS RETRO FABRIC IS MAKING A COMEBACK! HERE'S A LITTLE HISTORY AND HOW TO BEST USE OILCLOTH.

1

Why is it called oilcloth?

When it was invented, oilcloth was a cotton or linen fabric treated with linseed oil to make it waterproof for things like luggage and clothing. Today's oilcloth is coated in vinyl and comes in both shiny and matte finishes.

2

In what projects should I use oilcloth?

This waterproof fabric is perfect for things like place mats, baby bibs, reusable food bags, or zipper-top totes for makeup or pens and pencils—anything that you want to be able to wipe clean.

3

How do I care for this fabric?

Do not put a hot iron directly on oilcloth—heat and vinyl are not friends! Use a press cloth, such as a kitchen towel, between the iron and the fabric or iron only on the cotton side of projects like these table linens that have a cotton backing. Some oilcloth can be machine-washed, but only occasionally and on the gentle cycle.

FOR RESOURCES SEE PAGE 101.

The perfect machine for quilting & home decor!

Sapphire™ 930

- The EXCLUSIVE SENSOR SYSTEM™ technology automatically and continuously senses any thickness of fabric for perfect fabric feed.
- The Exclusive SEWING ADVISOR® feature instantly sets everything for you.
- Hundreds of 7mm stitches, specialty stitches and four font styles.



Learn to make this stunning 3D Flower Pillow:
<http://www.husqvarnaviking.com/en-US/Be-Inspired/Blog/September-en/SAPPHIRE-3D-Flower-Pillow>

Now available at a retailer near you.

husqvarnaviking.com

OUR
COVER
STORY

moving up

After years of huddling in 500-square-foot apartments in New York City, a magazine editor moves home to Michigan and upsizes her house—and her life.

WORDS **SARAH WOLF HALVERSON**
PHOTOGRAPHS **DAVID A. LAND/PAT BATES**





BRINGING THE INDOORS OUT The small shed in Michelle Adams' Michigan backyard, *above right*, isn't just a spot to stash garden implements—"it's become my favorite little hangout," she says. Ordered at Home Depot and customized to her specifications, the Tuff Shed structure includes windows, a skylight, and paint that matches the main house. Michelle outfitted the interior, *above*, with pegboard (to hang tools), a trestle table crafted of IKEA parts, and a vintage wire Bertoia chair scored for \$20 at an antiques market. The shed can serve as an office or a shady spot for Rufus the pup as Michelle works in the garden.



"DON'T GET ME WRONG," SAYS MICHELLE ADAMS. "I HAD A LOVELY LIFE AND AN AMAZING CAREER IN NEW YORK." She was the editor in chief of *Domino* and cofounder of *Lonny* and by any estimation had "made it" in the big city by the time she turned 30. "But I also felt like I was actively choosing my career over my family," she says. "I was ready for a change of pace, and I was ready to have a life outside of work." She packed up her 475-square-foot apartment and moved to Ann Arbor, Michigan, just a few miles from her parents.

Her new digs? A 2,200-square-foot Colonial built in the 1920s that she actually owns—and that she put much thought and elbow grease into furnishing and decorating. "When you're renting," she says, "it's much easier to have a trendy place, as opposed to when you own a house and have to make expensive renovations. That was a huge eye-opener when I moved into this house. How do you design a home that feels relevant today but still timeless so you don't have to redo it in 10 years?"

The answer, it turns out, is to surround yourself with things you love, treat the outdoors as an extension of the interiors, and invite people over—often. That spacious square footage, after all, is meant to be shared.



THE SOFA AND
WHITE WING
CHAIRS ALL
HAVE WASHABLE
SLIPCOVERS SO
MUDDY PAW
PRINTS FROM
RUFUS WASH
(OR BLEACH)
RIGHT OUT.



THE ORIGINAL
HARDWOOD FLOORS
WERE IN GREAT SHAPE,
BUT THE YELLOWING
FINISH WAS UNSIGHTLY.
AFTER SANDING, CLEAR
POLYURETHANE LETS THE
WOOD'S RAW COLOR
SHINE THROUGH WHILE
PROTECTING IT
FROM SPILLS.

ELEGANT MIX Michelle modeled the living room, *left*, after the work of one of her favorite architects, Michele Bonan, who designed J.K. Place luxury hotels all over Europe. "He always uses the same formula from a layout standpoint and pairs midcentury modern pieces with highly traditional ones," she says—hence, wing chairs and a marble mantel mingle with a sleek coffee table and sculptural light fixtures. "I always wanted to live in one of his hotels, so I took the basic elements and put them in my living room!" Because the house has no foyer, the front door opens directly into the living room, *above*. To create a bit of transition from outside to in—and to catch jackets and keys—Michelle hung hooks on one wall and situated a shallow table and mirror on another.

A FRESH FACE Seriously dated when Michelle bought the house, the kitchen, *this photo*, was heavy-laden with brown cabinets and vinyl flooring. "I really had to choose where to spend my money and where to save," she says. On the "save" list are the cabinets purchased from Home Depot; they're elevated with pricey Restoration Hardware knobs and Carrara marble countertop.





HAPPY MEDLEY The breakfast room, *left*, hosts items from all over the world, and they coexist happily. An IKEA tulip table lurks under a custom-sewn indigo tablecloth, with leather chairs surrounding. In the corner is a quirky elephant sculpture by a French artist—years ago, Michelle borrowed it for a *Domino* shoot, and she got attached. “This is coming home with me,” she remembers thinking. “It’s wild but I love it.”

“OPEN SHELVES MAKE YOU EDIT YOUR THINGS,” MICHELLE SAYS. “THEY MAKE YOU BE PRETTY HONEST ABOUT WHAT YOU’VE GOT, AND THEY MAKE THE KITCHEN AIRIER, BRIGHTER, AND NICER TO BE IN.”

DO IT BETTER

LIGHTING MAKES ALL THE DIFFERENCE IN DECOR. EVERY ONE OF MICHELLE’S CEILING FIXTURES IS ON A DIMMER—ALL THE BETTER FOR SETTING THE MOOD AT AN EVENING GET-TOGETHER.



DO IT BETTER

RATHER THAN TOTING HOME SOUVENIR T-SHIRTS OR MUGS FROM A VACATION, INVEST IN ARTWORK (PHOTOS, PAINTINGS, TEXTILES) WHEN YOU TRAVEL. "TRY TO MEET LOCAL ARTISTS AND FIND COOL PIECES—THEY'LL REMIND YOU OF YOUR TRIP," MICHELLE SAYS.



MEMORY COLLECTOR

Michelle is careful to include meaningful items in every vignette in her home—things that are special to her and remind her of travels and family—and the living room bookcase, *above*, and living room nook, *left*, are brimming with them. The bottom shelf of the bookcase is piled with fabrics from all over the world (New York, Guatemala, France); the custom watercolor (an Etsy commission) on the gold-edged table is of her pup, Rufus.

"LIVING IN NEW YORK ALL THOSE YEARS MADE ME VALUE EVERY SQUARE INCH OF MY HOME. I TREASURE THE CLOSETS, THE BASEMENT, EVERYTHING—I TOOK ADVANTAGE OF EACH LITTLE SPACE!"

MICHELLE ADAMS, HOMEOWNER

DARING MENU "I didn't need a super fancy-pants dining room, but at the same time, the house called for something sophisticated," Michelle says. She toned down the room's inherent formality with edgier elements: a metal hutch and sleek square chairs. They gather around an 1800s Swedish trestle table alongside antique chairs reupholstered with vintage Guatemalan fabric for the right balance between edgy and elegant.



ATTENTION-GETTER The office, *this photo*, was hiding these gorgeous wood planks under drywall coated in neon green paint. The dropped ceiling also concealed original beaded board. Michelle happened to be at the house when the contractor uncovered both—she stopped him from putting up more drywall. It's here where Michelle works on her latest venture, *The Maryn* (themaryn.com), an online editorial destination "dedicated to the pursuit of living well."



MICHELLE APPLIED A ROLL OF CORK (BOUGHT ON AMAZON) LIKE WALLPAPER ON ONE WALL TO CREATE A GIANT BULLETIN BOARD WHERE SHE PINS IDEAS AND INSPIRATION FOR HER WORK.

DO IT BETTER

WHAT IS THE FIRST THING YOU SEE WHEN YOU WALK INTO A ROOM? IN HER OFFICE, MICHELLE WANTED TO FOCUS ON THE WARM WOOD WALL AND ANTIQUE OIL PAINTING RATHER THAN THE BUSY INSPIRATION BOARD.

BACK IN BLACK The walls of the master bedroom, *this photo*, are cloaked in almost-black grass cloth, which imparts the depth, darkness, and texture Michelle was after. White curtains, white bedding, and a white upholstered headboard offset the dramatic walls. "It is a cozy little cave," Michelle says.





YELLOW

Go bold with head-turning hues that crank curb appeal up a notch and let your personality shine.

PROJECTS **LESLIE POYZER** PHOTOGRAPHS **ADAM ALBRIGHT** WORDS **PAMELA PORTER**



MAKE AN ENTRANCE Fresh paint and thoughtful accents add instant character to a home's exterior, *this photo*. Start underfoot with a whimsical welcome stenciled on a plain coir doormat, *opposite*. Print letters onto cardstock and cut out. Spray back of letters with adhesive and press letters to the mat. Apply paint to the top of mat, around the letters. We used a stencil brush and latex paint, but spray paint would make this project even easier! Let dry and remove letters.





MAKE IT

HANGING PLANTER

MATERIALS

- 3 plastic window box planters
- 16 linear feet of 2x3 pine (Ripping to 1½x2½ inches like we did is optional.)
- Table saw
- Drill, drill bits, star-drive bit
- #9 2¾-inch star-drive screws
- #10 3¾-inch star-drive screws
- #8 2-inch star-drive screws
- Paint and paintbrush
- 8 carabiner clips
- 12 eyebolts
- Twelve ¼-inch nuts and washers
- 4 screw eyes

Step 1 Measure space where the planters will be hung. Purchase plastic window boxes to fit the width of the space allowing 8–10 inches extra. Our window boxes are 30 inches wide.

Step 2 For the short sides of the window box holder, measure the width of plastic planter right below the lip and add 2½ inches. Cut six pieces of pine to this length. For the long sides of the planter holder, measure the length of the planter right below the lip and add ¼ inch. Cut six pieces of pine to this length. To assemble, use 2¾-inch screws to secure two short boards and two long boards, predrilling all holes. Repeat with remaining boards to assemble three planter holders total.

Step 3 For the horizontal pieces of the frame, measure the long side of the planter box holder and cut six pieces of pine to this length. Predrill these pieces approximately 2 inches from the ends to accommodate two eyebolts. (Be sure the planters fit between the eyebolts.) Measure the height of the overall opening. Measure carabiner clip and eye of hardware, total these measurements, and multiply by four. Subtract the hardware total from the overall opening number, then divide by 3. Cut six pieces of pine to this length for the vertical pieces of the frame. To assemble a frame, use 3¾-inch screws to secure two horizontal boards and two vertical boards in a rectangle, predrilling all holes. Repeat with remaining boards to assemble a total of three frames.

Step 4 Use 2-inch screws to secure a planter box holder inside each of the three frames (A) in a position that allows the planter box to rest on the bottom frame board.

Step 5 Paint assembled pieces and let dry. Install eyebolts into each frame. Predrill and install screw eyes at top and bottom of where planter will hang. Connect the frames using carabiner clips and hang (B). Insert plastic planters.

DO IT BETTER

THIS VERTICAL PLANTER IS GREAT FOR AN HERB GARDEN, BUT IF PRIVACY IS YOUR GOAL, CHOOSE DENSE PLANTINGS THAT GROW TALL TO FILL THE ENTIRE FRAME. ADD TRAILING PLANTS TO FURTHER OBSCURE THE VIEW.



THE HANG OF IT Let this three-tier planter box, *opposite*, add life and architectural appeal to an underutilized outdoor space. With just 24 cuts, basic drilling, and painting, it's a doable project for even a novice DIYer. The key is to measure accurately to accommodate your space and planter boxes. If the thought of a permanent structure makes you nervous, you can relax knowing the carabiner clips, *left*, not only offer modern industrial appeal, but also make this structure easy to dismantle.

DO IT BETTER

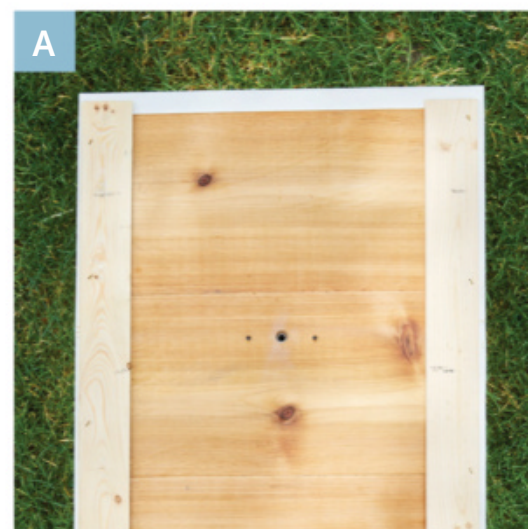
ADD A TOUCH OF TECHNOLOGY WITH A HOME SECURITY DOORBELL. THIS BATTERY-OPERATED RING MODEL IS EASY TO INSTALL—NO ELECTRICIAN NEEDED!

THOUGH WE LIKE THE CONTRAST OF THE BLACK METAL, YOU COULD VISUALLY LIGHTEN THE SPACE BY PAINTING THE PLANTER RING, MAILBOX, AND EVEN THE LIGHT MOUNTING WHITE.





FRAME OF MIND Give functional items the attention they deserve by creating a three-dimensional exterior work of art. Fashioned from cedar and pine, this wall plaque, *opposite*, corrals a light fixture, mailbox, and planter into one tidy and attention-grabbing exhibit. When measuring placement of each item, consider the height of growing plants as well as opening the lid of the mailbox. Resist the temptation to distribute the items evenly and instead allow for visual resting space in the composition as we did under the light. In keeping with a modern vibe, the steel ring bracket, *left*, gives the illusion the flowerpot is suspended midair. Consider a flowerpot with an attached drainage dish to keep water and soil from dripping onto the porch.



MAKE IT

WALL PLAQUE

MATERIALS

- 2x3 pine boards
- Table saw
- Miter saw
- Wood glue
- Clamps or strapping
- White semigloss paint
- Paintbrush
- 1x6 cedar boards
- Exterior-grade stain (We used oil-base Cabot Semi-Transparent Deck and Siding Stain in Natural.)
- Stain brush
- 1/4x2-inch lath
- Staple gun and staples
- 2 1/2-inch hole saw
- Screwdriver
- #9 2 3/4-inch star-drive screws

- Drill and star-drive bit
- Mailbox
- Plant hanger
- Exterior light fixture

Step 1 Measure the location and the size of your elements to determine the size of the plaque. If electrical wire does not already exist, run it in the wall for the light fixture or hire a professional to do so. For frame, use table saw to cut pine boards to desired size, mitering corners and rabbeting the back 1x1 1/2 inches.

Step 2 Glue the frame assembly, holding pieces together with clamps or strapping pulled taut around the length and width of the frame. Let glue dry, then paint the frame and let dry.

Step 3 Cut cedar boards to fit inside the rabbeted frame, allowing 1/4 inch for expansion and contraction at sides, top, and bottom. Coat with deck stain and let dry.

Step 4 Lay cedar boards into rabbeted side of frame, keeping them in place and allowing for expansion and contraction by stapling lath to the back of the frame (A).

Step 5 Using a hole saw, cut the opening for the electrical wires. Secure the plaque to wall using two screws that will be concealed behind the mailbox and light fixture. Screw the mailbox and plant hanger to the plaque, and install the light or hire an electrician to do so.



PULLING DOUBLE DUTY This multitasking planter box, *left*, displays house numbers and flowers all in one. To make the box, cut cedar boards for the front and back equal to the long side of the planter plus 2 inches, and the side boards equal to the short side plus ½ inch. Cut enough boards to run horizontally on all sides to the height desired and allowing for the foot if positioning on a step. Cut ¾×¾-inch pine corner blocks to join all cedar boards. (You will need six if your box fits on a step as ours does.) For the front panel, join the cedar boards to corner blocks at each end, predrilling and screwing through the blocks and into but not through the cedar boards and using two screws per board. Repeat for back panel. Cut two ¾-inch-square pine pieces the width of your plastic planter and screw one each to the inside of front and back panels to act as a shelf to hold the plastic planter (A). Determine placement of hidden-mount house numbers (B) and predrill before securing numbers to the front panel. To complete the box, screw the cedar side and foot boards to the front and back panels via the corner blocks. Add a filler piece of cedar at the top of each side to cover the gap created by the corner blocks.



SECURE THE SIDES OF THE BOX LAST OR YOU MAY NOT BE ABLE TO FIT THE DRILL INSIDE TO SECURE HOUSE NUMBERS AND PLANTER BOX SUPPORT PIECES.



TO MAKE INSTALLATION OF THE SELF-STICK WINDOW FILM A BREEZE, WE USED MASKING TAPE AS A GUIDE AND PURCHASED AN APPLICATION KIT THAT INCLUDES A SQUEEGEE, TRIM TOOL, LINT-FREE CLOTH, AND APPLICATION SOLUTION.

TO ACHIEVE A COHESIVE TRANSITION FROM DOOR TO FLOOR, WE COLOR-MATCHED THE PAINTED MAT TO THE YELLOW DOOR.



FOR RESOURCES
SEE PAGE 101.

THREE'S COMPANY Grouping flower pots of various sizes, *above*, is an inexpensive and versatile outdoor design solution that can be changed with seasonal plantings throughout the year. At this entry, the grouping also helps visually balance the plaque on the opposite side of the door. For privacy at the glass door and to filter natural light without blocking it entirely, use self-stick window film, which is easy to install and easy on your budget. Rather than apply film to the entire window, consider modest design elements like our border and horizontal divide. To ensure adhesion, clean the glass thoroughly and follow manufacturer instructions. While not required, a rotary cutter, straightedge, and cutting mat helped us make quick and precise cuts.

SHELF *life*

From rustic to sophisticated,
these creative bookshelves are
never a dull read.

PROJECTS **SARA PEREZ AND KAREN BRADY**
PHOTOGRAPHS **CARSON DOWNING**
WORDS **JENNY BRADLEY PFEFFER**





TOP YOUR TABLE
WITH GLASS FOR
A FINISHED LOOK.
GLASSTOPSDIRECT.COM
SELLS ROUNDS IN ONE-
INCH INCREMENTS.

MAKE IT

SPOOL TABLE BOOKSHELF

MATERIALS

- Cable spool
- Sander (optional)
- Four locking casters
- Drill/driver
- Paintbrush
- Primer and paint
- Bookends
- 1/2-inch screws
- Glass top (cut to fit the dimensions of your table)

Step 1 Comb local vintage shops or eBay for wood cable spools. (You may also find them at home improvement stores.) Ours was 32 inches in diameter and about 16 inches tall. Sand the spool, if necessary, to eliminate any rough patches or irregular edges.

Step 2 Choose which side you'd like to use as the top of your table. Turn the spool over and evenly space four casters around the bottom, attaching according to caster manufacturer instructions.

Step 3 Prime the table. When dry, paint the spool your desired color (you may need multiple coats); let dry.

Step 4 Map placement of bookends and attach to the lower shelf using 1/2-inch screws. We used bookends from a library supplier, but any type you can attach will do.

Step 5 Place glass on top, and stock your shelves.

LIBRARY TABLE Inject a hint of industrial appeal into your home with a painted spool table given new life as a library-in-the-round, *opposite* and *above left*. With wheels for easy maneuverability and a cheery coat of paint, a utilitarian spool becomes a delightful design focal point with dual purpose. Lined with an array of colorful books—stacked both upright and horizontally—it's part library cart, part pragmatic coffee table.



PRIME AND SPRAY-PAINT A CURTAIN ROD, FOUR EXTENDABLE CURTAIN BRACKETS, AND THREE SETS OF HAIRPIN LEGS OF VARYING LENGTHS (WE USED 10-, 22-, AND 34-INCH LEGS).



DO IT BETTER
BEFORE HANGING CURTAIN ROD BRACKETS ON THE WALL, MEASURE THE LENGTH OF THE LONGEST HAIRPIN LEG WITH SHELF ATTACHED TO ENSURE PROPER PLACEMENT OF YOUR SHELVES.

INSIDE THE BOX Upgrade a store-bought cube organizer with pretty paper and tapered legs, *above and opposite*. Cut a white shelf to match the dimensions of the organizer and attach the shelf to what will be the bottom of the organizer using 1-inch wood screws (two per short side and three per long side). Attach the six legs (ours are 10 inches) using 2-inch wood screws.

LEG UP Give hairpin legs new function with this eye-catching design, *this photo*. Paint the curtain rod and hairpin legs your desired color. Cut a 1x10 board into three lengths (ours are 18, 30, and 42 inches long). Center hairpin legs on either end of the boards—with the smallest legs paired with the shortest board—and mark the location. Drill through each board, using a bit slightly smaller than your #10-24 1-inch machine screws, and affix the hairpin legs to the boards with the screws and #10-24 cap nuts. Attach the curtain rod brackets to the wall, ensuring that you hit a stud or use drywall anchors. Thread the curtain rod through the hairpin legs and place in the curtain rod brackets. Attach 1x1½-inch corner brackets (two per shelf) to the boards and wall for added stability.





A SMALL LIP ON THE FRONT OF SHELVES MAKES FOR SLIP-FREE STACKING. WE USED A 1X2 BOARD FOR OUR 24-INCH-WIDE SHELVES.

SPECIAL THANKS
TO ROOM &
BOARD, WEST ELM,
CHRONICLE BOOKS,
ART TERRARIUM,
CRATE&KIDS, AND
MINTED

LEDGE-NDARY SHELVES Office shelving has never been so easy, *above*. Cut plywood to desired widths and heights. (The shelf backs shown here are ½-inch plywood cut to 24x18 inches and 24x12 inches. The horizontal shelf is 6 inches deep.) Once the pieces are cut, assemble by affixing the backing to the shelf with 1½-inch wood screws and wood glue. Attach the front ledge with wood glue and a nail gun. After assembly, we applied a whitewash stain.

MAKE IT

LADDER SHELF

MATERIALS

- 1x2 boards (Poplar if painting; pine or oak if staining. You'll need 30½ feet for a 5½-foot shelf unit.)
- 1x10 board (You'll need 10½ feet.)
- ¾-inch square dowels
- Measuring tape
- Saw
- Sanding block or sander
- Wood glue
- Pin nails and nailer
- Two 2x1¾-inch hinges
- Square
- Paint and primer (or stain and sealer)
- Paintbrush

Step 1 Cut the wood as specified in the cut list, *below right*, and lightly sand to smooth rough edges.

Step 2 On a flat surface, arrange two of the 1x2x69-inch pieces parallel to each other, with the narrow sides facing up. Mark each piece at the following measurements from the bottom:

17¼ inches, 18 inches, 28¼ inches, 29 inches, 39¼ inches, 40 inches, 50¼ inches, 51 inches, 62¼ inches, and 63 inches.

Step 3 Place five rungs between the two frame pieces, matching them with the five pairs of measured marks. Glue and nail the rungs between the two 69-inch lengths and allow the glue to dry.

Step 4 Repeat steps 2 and 3 with the two remaining 69-inch lengths to create the second side of the ladder.

Step 5 Stack the ladder sides on top of the other, and screw hinges to the top to form the A-frame.

Step 6 Put the bottom shelf on a flat surface and arrange the two cleats parallel to each other, 1 inch from either end. Secure using glue and pin nails.

Step 7 Paint or stain the unit.

Step 8 When dry, stand the ladder upright and set the bottom shelf on the bottom rungs with the cleats resting just outside the rungs to secure the legs. Set the other shelves in place.



STEP BY STEP Ideal for any space in which you want height, this ladder-style étagère is both decorative and utilitarian, *this photo*. Flank a sofa with a pair for high impact symmetry or pile a single piece with plants and tuck into a corner.

DO IT BETTER
TO SECURE SHELVES AND AVOID SLIPPAGE OR SPILLS, ADD CLEATS (WE USED 1-INCH SQUARE DOWELS) TO THE BOTTOM OF EACH SHELF—EITHER JUST INSIDE OR JUST OUTSIDE THE RUNGS.

CUT LIST

#	PART	LENGTH
4	A-FRAME STRUCTURE	1x2 at 69"
1	BOTTOM SHELF (SHELF 5)	1x10 at 37"
1	SHELF 4	1x10 at 31"
1	SHELF 3	1x10 at 25"
1	SHELF 2	1x10 at 20"
1	SHELF 1	1x10 at 13"
10	LADDER RUNGS	1x2 at 9½"
2	DOWEL CLEATS BOTTOM SHELF	¾x¾ at 9½"

FOR RESOURCES
SEE PAGE 101.

MADE IN THE

shade



One structure, three looks. Build and accessorize a backyard retreat, then kick back and enjoy the view.

PROJECTS **JENI WRIGHT** PHOTOGRAPHS **BLAINE MOATS**
WORDS **MARIA V. CHARBONNEAUX**



style tip

HANG LANTERNS USING
COMMAND OUTDOOR
LIGHT HOOKS—FOUND
WITH THE HOLIDAY
SUPPLIES—AND STRING,
ROPE, OR FISHING LINE.

LIGHT THE NIGHT A DIY cabana provides the destination. How you trick it out brings the atmosphere. If relaxing with a glass of wine after a long day is your idea of perfect, take a load off under the soft glow of pretty paper lanterns, *opposite*. To get this eclectic look, select lanterns in a variety of sizes, colors, patterns, and textures, and place a battery-operated LED tea light in each one. Up the comfort level for you and your guests with large floor cushions, cozy outdoor blankets, and citronella candles.



➡ *Out of the box!* Learn how to sew a box cushion. [BHG.com/Cushion](https://www.bhg.com/cushion)

MAKE IT

WINDOW WELL CABANA

MATERIALS

- Sixteen 8-foot lengths of 2x6 cedar
- Three 8-foot lengths of 2x8 cedar
- Two 8-foot lengths of 2x2 cedar
- Miter or circular saw
- Drill
- Kreg Jig
- Exterior wood glue
- Clamps
- 1½-inch Kreg Blue-Kote Pocket Hole Screws
- 2½-inch exterior wood screws
- Wood filler (We used Bondo.)
- Sandpaper and electric sander
- Paintbrush
- Exterior primer
- Exterior paint
- Canvas strapping
- Stapler and staples
- 44x70½x4-inch outdoor foam
- 5 yards outdoor fabric
- Zipper (optional)
- Three 24-inch galvanized window well sections
- 2-inch bolts, washers, and nuts

Step 1 Referring to cut list, *below*, cut all cedar boards.

Step 2 To prep the boards for the cabana front panel, drill sets of two pocket holes in both ends of the front rungs A, in both ends of the vertical front center support B, and at the top and bottom along the long edge of the vertical front side supports C. (Note: All pocket holes should be placed on the sides that will face the interior of the finished cabana.)

Step 3 Referring to the illustration, *opposite*, glue, clamp, and assemble A rungs and B support using screws. Add C supports to

each side of the assembly, making sure they're flush with the top A rung and the extra pocket holes are facing out (toward the eventual side panel) before securing with wood glue and screws.

Step 4 To prep the boards for the cabana side panel, drill sets of two pocket holes at each end of four horizontal side rungs D and the short apron E. To assemble, place the first D rung 3 inches up from the bottom of the vertical posts F; secure with wood glue and screws. Add the remaining three D rungs, spacing each rung 3 inches above the previous rung.

Step 5 Secure the top E apron between the posts, making sure all edges are flush at the top to complete the side panel.

Step 6 Repeat steps 4 and 5 to assemble the second cabana side panel.

Step 7 To prep the boards for the cabana back panel, drill sets of two pocket holes in both ends of each horizontal back rung G, and at the top and bottom along one long edge of two of the vertical back supports H. Referring to the illustration and beginning at the top so boards are flush, secure a horizontal G rung to two vertical H supports (one should have pocket holes facing outward and will be a side support; the other should have no pocket holes and will be the center support). Repeat with the remaining G rungs, spacing them 3 inches apart and gluing and clamping all pieces as you screw them together.

Step 8 To complete the back panel, repeat Step 7 to attach the remaining G rungs and H support to the assembly.



CUT LIST

KEY	#	PART	MATERIAL	LENGTH
A	2	FRONT RUNG	2x6 (1½x5½")	57⅝"
B	1	FRONT CENTER SUPPORT	2x6 (1½x5½")	27⅞"
C	2	FRONT SIDE SUPPORT	2x6 (1½x5½")	13"
D	8	SIDE RUNG	2x6 (1½x5½")	34½"
E	2	SHORT APRON	2x8 (1½x7¼")	34½"
F	4	POST	2x6 (1½x5½")	67⅞"
G	8	BACK RUNG	2x6 (1½x5½")	27"
H	3	BACK SUPPORTS	2x6 (1½x5½")	25⅞"
I	2	LONG APRON	2x8 (1½x7¼")	70½"
J	2	APRON SUPPORT	2x2 (1½x1½")	70½"
K	5	SEAT SLATS	2x6 (1½x5½")	38½"
L	5	SLAT SUPPORTS	2x6 (1½x5½")	9¾"

Note: All material is red cedar. Nominal lumber sizes are given. Actual sizes are listed in parentheses. Kreg screw length should match actual board depth.

(Be sure the pocket holes in H face outward toward the edge.)

Step 9 You should now have four completed cabana panels. To begin assembling them into one unit, clamp the front panel to your work surface, and then clamp one of the side panels to the front panel, making sure the bottom of the assembly is flush. Using the existing pocket holes from Step 2, glue and screw them together.

Step 10 Repeat the process on the opposite side with the remaining side panel.

Step 11 Add a set of two pocket holes at each end of both long aprons I. Clamp and glue one I apron in place at the top of the assembly between the two side panels so boards are flush; secure with screws. Set the other aside.

Step 12 Stand up the assembly on the floor, and screw the back panel to the assembly in the same way using existing pocket holes in the side supports, wood glue, and clamps. Repeat Step 11 using remaining I apron.

Step 13 Using wood screws, attach the upper apron supports J to the I aprons, so the boards are flush at the top of the assembly.

Step 14 To prep the boards for the seat, drill a set of two pocket holes in each end of each of the five seat slats K and in one end of each of the slat supports L.

Step 15 To assemble the seat, attach an L slat support at the center of each horizontal K seat slat. Space the five seat slat units evenly between and parallel to the cabana side panels; attach them to the A and G rungs second from the bottom on the front and back panels.

Step 16 Fill all visible pocket holes with wood filler; let dry. Sand smooth.

Step 17 Sand the entire cabana. Wipe away dust.

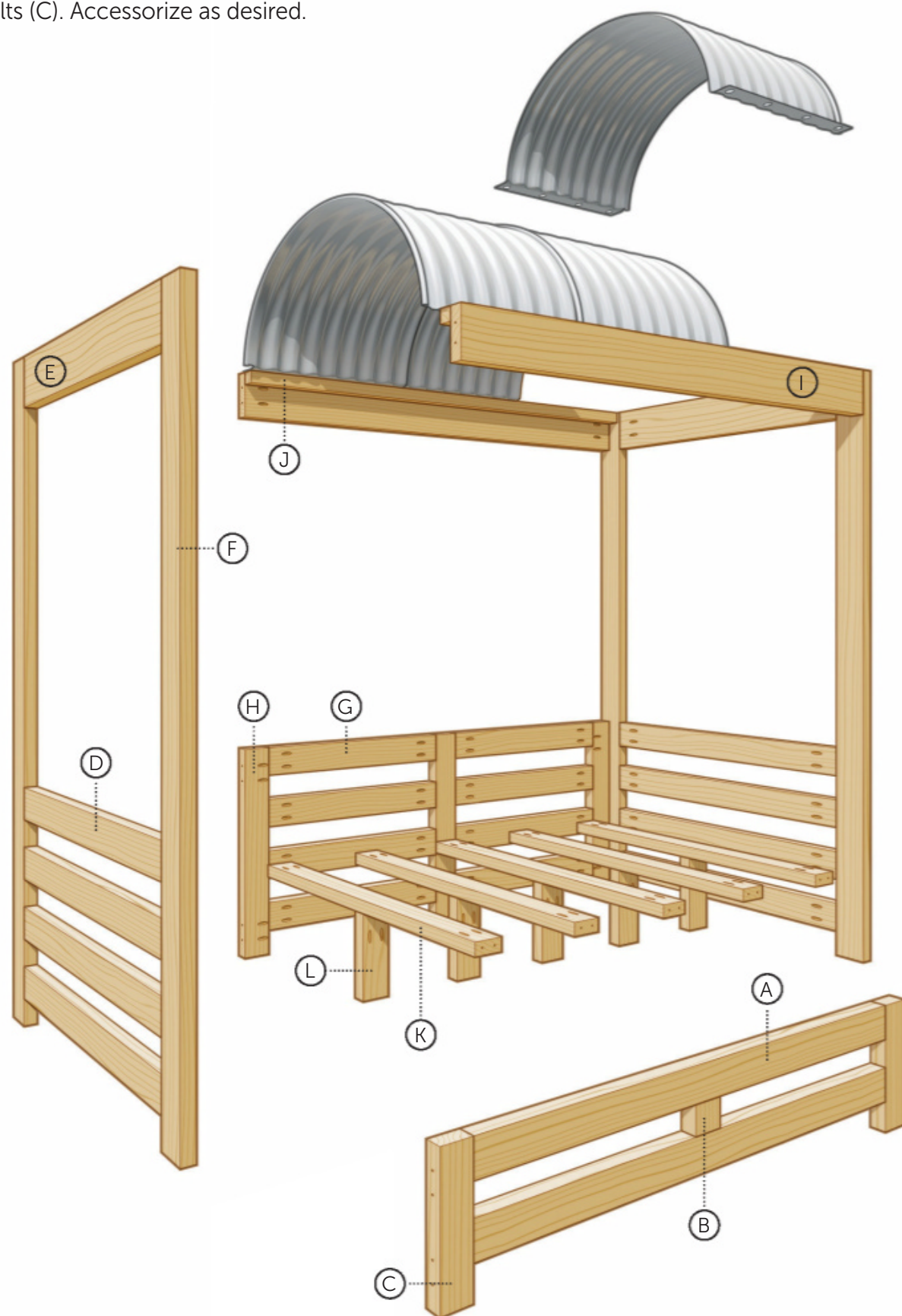
Step 18 Prime and paint the cabana, allowing to dry between coats.

Step 19 While the paint dries, cut the strapping into six 58-inch lengths. Once the paint is completely dry, staple one of the straps around a K seat slat at one end (A). Stretch the strapping across the seat, wrapping and stapling the other end to the K slat on the opposite end.

Step 20 Repeat with the remaining straps, spacing them evenly across the K slats.

Step 21 Using outdoor fabric, sew a box cushion cover for the foam cushion (B). Add a zipper if desired so you can remove and launder the cover.

Step 22 Place the three window well sections on top of the assembly, so they rest on the upper apron supports. Overlap the center section as needed. Secure with bolts (C). Accessorize as desired.

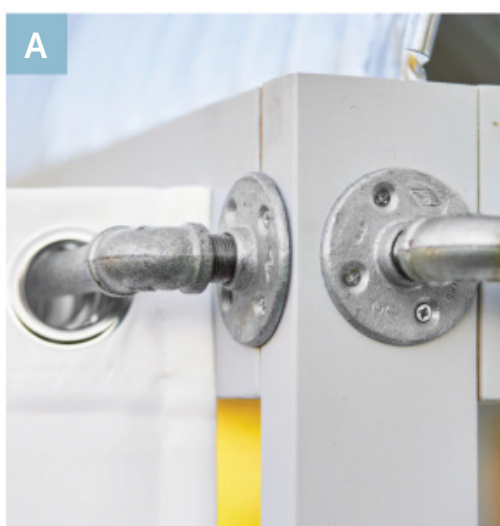




DO IT BETTER

GALVANIZED PIPE IS AVAILABLE IN MANY OFF-THE-SHELF SIZES, BUT IT CAN ALSO BE CUT TO YOUR DESIRED DIMENSIONS AND THREADED AT THE HARDWARE STORE.

EASY BREEZY Extra shade, privacy, and comfort are at your fingertips when you soften the structure with billowy white outdoor curtains, *left*. Galvanized pipes, elbows, nipples, and flanges come together to create curtain rods that can stand up to the elements. To assemble curtain rods for the short side of the cabana, attach 1-inch 90-degree galvanized elbows and 1-inch galvanized nipples on either end of two 1x36-inch galvanized pipes. Put the grommeted curtains on the rods, and then add galvanized floor flanges on either side. Secure the rod to the upper apron of the structure using 1-inch exterior wood screws (A). For the long curtain rods, repeat the process using 1x60-inch galvanized pipe. Complete the serene setting with neutral pillows and greenery.



style tip

OPT FOR READY-MADE CURTAINS OR MAKE YOUR OWN FROM WEATHER-RESISTANT GROMMETS AND OUTDOOR FABRIC THAT'S RESISTANT TO MILDEW AND FADING.







style tip

BRIGHT, PUNCHY COLORS MAKE THIS HANGOUT REMINISCENT OF A TROPICAL VACAY. LOW-MAINTENANCE CHOICES—LIKE A RESIN OUTDOOR SERVING CART THAT'S BUILT TO WITHSTAND THE ELEMENTS—KEEP THINGS FUSS-FREE.

BLOOMS AND BIRDS Embrace all that the outdoors offers when you surround yourself with lush foliage and fragrant, colorful flowers, *opposite*. Then put a bird on it with playful lawn ornaments and pillows in bright magenta and bold blue prints. A bar cart, *above*, keeps lemonade, fruit, and other refreshments at the ready for entertaining. We're fans of reusable ice cubes to keep punch cool without watering it down.

DO IT
BETTER
WHEN SELECTING ANNUALS,
FOLLOW THIS RULE OF (GREEN)
THUMB: THRILLER (HEIGHT
AND WOW FACTOR), FILLER
(FULLNESS AND DEPTH),
AND SPILLER (TRAILING
PERIMETER PLANTS).

FOR RESOURCES SEE PAGE 101.



WALL FLOWERS Line the walls of your cabana with a dozen ready-made, 24-inch-wide cedar planter boxes, *above*. Using 1x3 cedar boards and 1¼-inch wood screws, build a ladder structure—ours are about 42 inches tall and contain eight 32-inch rungs spaced about 1½ inches apart. Paint the planters and ladders to match the cabana structure; let dry. Attach the planters to the rungs using wood screws, and then screw the entire assembly to the cabana. Plant the boxes with flowering annuals.

THOUGH SHE HAD ZERO EXPERIENCE, JODI MOCKABEE HUNG NEARLY EVERY LIGHT FIXTURE IN THE HOME, LEARNING THE ELECTRICAL INS AND OUTS BY WATCHING NUMEROUS YOUTUBE TUTORIALS.



②

①

③

HOME SWEET HOMEMADE

Two weeks. \$15,000. One ambitious family. Here's how they went all in with their whole-house overhaul.

WORDS **CAROLINE MCKENZIE** PHOTOGRAPHS **DAVID TSAY** STYLING **SCOTT HORNE**



IF THERE WAS A DO-IT-YOURSELF HALL OF FAME, JODI AND JASON MOCKABEE WOULD BE SHOO-INS ON THE BALLOT.

Though the couple had little experience with home remodeling, they set out on the mother of all DIY feats: renovating an entire home on a strict \$15,000 and in a mere two weeks. Plus we're talking a rundown ranch home nestled in the heart of the Sierra Nevada foothills. With shag carpet and exposed cinder-block walls, it was a house plenty of people would (and did!) give a hard pass.

But the Mockabees, *left*, saw potential where others saw a past-its-prime disaster. It had a nice open floor plan and some hip midcentury details like a steep-pitched ceiling with original rafters. The large rooms and natural light were especially appealing to these parents of five children. They also fell hard for the property itself—three scenic acres with neighboring woods for the nature-loving family to explore.

Thanks to a round-the-clock work schedule—and frequent viewing of YouTube tutorials—they achieved their Herculean goal of turning the dark, dated house into a warm, rustic home in a mere 14 days. Talk about a feat!

1 Homeowner Jodi Mockabee crafted the open shelving from wood scraps (planed for an even surface) hung on inexpensive L brackets. **2** Standard White from Kelly-Moore Paints ("It's not cool or warm—it's just white!" says Jodi) was enlisted to brighten decor on the ceiling, cabinets, woodwork, and many walls. **3** An industrious uncle helped the Mockabees craft the dining table and kitchen cabinetry. The custom designs meant the couple could maximize efficiency in the work zone.



BEFORE

6



THE DISPLAY SHELF WAS MADE FROM A LOG FOUND ON THE PROPERTY. SUCCULENTS IN GLAZED POTS ADD TO THE EARTHY LOOK.

4

5



AN OLD HARDWARE STORE CRATE BECOMES A MOBILE TOY BOX WITH THE ADDITION OF CASTERS.

4 The Mockabees sought an alternative to covering the cinder-block walls with drywall, which would be too expensive. After pricing numerous options, plaster rang in the most economical. They saved even more by leaving the plaster skim unpainted. **5** Jodi's first decor project is proudly on display in the living room—she transformed a tree trunk into an end table using a chain saw to cut it to size and then removing the bark. "This house got me using power tools!" she says. **6** In the main living areas, the Mockabees laid laminate flooring that can take a beating from five pairs of muddy boots.



7 The room's numerous wood tones—both the midcentury furnishings and found decor—were inspired by the Mockabee children's love of the outdoors and the treasures they bring home from their nature walks.

8 Jodi had a local vendor make the faux-suede sofa. "It ended up being a lot less expensive than buying retail. And it perfectly fits the space," she says.

DO IT BETTER

TO KEEP THE HOUSE'S MANY WOOD ELEMENTS FRIENDLY FOR LITTLE HANDS, JODI COATED THE PIECES WITH BEESWAX—A NONTOXIC, SUPPLE FINISH.

9 An important part of Jodi's DIY education has been learning to leave well enough alone. Case in point: the metal lockers she found for a steal on Craigslist. She left the unit as-is (rust and all). **10** A milled piece of wood hangs on the side of the locker unit as a measuring stick to track the kids' growth (and to hide a few holes!).



11 Jodi gave the former floating stairs more presence by adding stair risers and chunky stained treads. "I love how they are wearing with time," she says. **12** A felled tree, discovered by the family on a hike, became a prominent design feature when installed at the base of the stairs. The quirky element bears no weight but plenty of sentiment. **13** Jodi capitalized on space by incorporating cabinets and drawers under the stairs.





GET IT DONE!

Jodi Mockabee, homeowner and mother of five, shares her tips for sticking to a (tight!) renovation schedule.

SQUEEZE IT IN

"This may sound like a no-brainer, but I promise you'll be surprised how much more you can get done if you clock a few extra work hours in the early morning and again after the kids are in bed."

BE CONSISTENT

"Using the same elements throughout the home—plaster or white painted walls, rustic wood accents, as examples—sped up the process. I quickly learned how to work with the materials, had plenty of everything, and didn't have to think through a new design scheme with each new room. Bonus: The house feels cohesive!"

WORK WITH WHAT YOU'VE GOT

"My repeated use of woodsy elements wasn't just for style. Though I do love the look! Being able to quickly grab something from the property is a whole lot faster than driving into town for it."



THE MOCKABEES TRIMMED THE LEGS OFF THE LOWER BUNK SO THE STRUCTURE WOULD SIT CLOSER TO THE FLOOR, PROVIDING MORE HEADROOM FOR THE TOP BED.

DELICATE FROST
6003-9A,
VALSPAR PAINT;
VALSPAR.COM

14 The white painted floors in one of the bedrooms serve up cottagey appeal. They are simply plywood planks adhered to the subflooring. "One of our least expensive projects," Jodi says. **15** Jodi added slim shelving (crafted of leftovers from the plywood flooring) along the perimeter of the room, creating a pretty, practical place to display childhood treasures.

16 Jodi and Jason turned the garage into a cheery boys' bedroom. They used salvaged windows to add ample sunshine to the once light-deprived space.

17 A stained piece of plywood was attached to the wall with L brackets to create a desk. Above it, a shipping pallet (painted white) serves as a makeshift bulletin board. **18** A salvaged door was painted a cool shade of aqua to coordinate with the lockers.





"IT'S BEEN NOTHING SHORT OF MAGICAL HOW THIS HOUSE THAT NO ONE WANTED HAS CONTINUED TO ACCOMMODATE OUR GROWING FAMILY."

JODI MOCKABEE, HOMEOWNER



DO IT BETTER
AN EASY WAY TO CUT COSTS? NO BASEBOARDS! THE MOCKABEES SAVED A SURPRISING AMOUNT OF MONEY BY SIMPLY SKIPPING BASEBOARDS THROUGHOUT THE HOUSE.



HANGING CLIPBOARDS ARE A SIMPLE WAY TO ADD STYLISH STORAGE ON A DIME.

- 19** No side table? No problem. Jodi fabricated a floating one using (surprise!) a chunky wood remnant and L brackets. She also hung the sconce above the petite perch.
- 20** The window valance is a strip of wood Jodi upcycled from a dilapidated fence.
- 21** Jodi took lighting by the horns, so to speak, and looped a corded plug-in light around an antelope taxidermy (gifted to them by a neighbor) for a one-of-a-kind fixture.
- 22** The bed for the master bedroom was made by a local craftsman. Savvy Jodi, who works as a photographer, traded it for a photo session.
- 23** A corner became a hardworking office space with the addition of two sheets of plywood that Jodi used to make a floating desk.

FOR RESOURCES SEE PAGE 101.

BOX *spring*s



Go vertical—and delicious! Check out
our clever containers for edible plants.

PROJECTS **SCOTT J. JOHNSON** PHOTOGRAPHS **MARTY BALDWIN**
WORDS **WENDY GRAY**

STACK 'EM UP This tower of plants might look complex, but it's actually made up of premade crates stacked on top of one another, *opposite*. Purchase your crates, secure them together with vertical side pieces and connectors, and stain to make your own wall of edible plants.

YOU HAVE TWO CHOICES IN GALVANIZED HARDWARE: ZINC-COATED AND HOT-DIPPED. ZINC-COATED (LEFT) WILL RUST EVENTUALLY; HOT-DIPPED (RIGHT) IS PRICIER BUT WILL HOLD UP LONGER. WE PLACED OUR BOLTS IN A CRISP X PATTERN FOR DESIGN PUNCH.



ITALIAN FLAIR Consider themes for your container gardens. These crates are filled with the makings of a tasty Italian dish. We included rosemary, cherry tomatoes, miniature eggplant, and several leafy herbs perfect for sauces. Curly (versus flat-leaf) parsley billows over the edge, *above*.



MAKE IT

CRATE PLANTER

MATERIALS

- Three 8-foot 1x4 cedar boards for vertical side pieces
- Chop saw
- Eight 18x12½x9½-inch wood crates
- Drill
- Thirty ⅝x2-inch galvanized hex bolts
- Thirty ⅝-inch galvanized washers
- Thirty ⅝-inch galvanized nuts
- Twenty-four 2½-inch galvanized deck screws
- 6-foot 1x4 cedar board for center in-box connectors
- Teak oil stain
- 3x50-foot roll of brown landscaping fabric
- ¼-inch staples and staple gun

Step 1 Cut 8-foot boards in half to create six 4-foot vertical side pieces. Place three crates on the ground with a handle side up and all opening in the same direction. Position three pieces of 4-foot cedar atop them, aligning the top of the first

crate and the bottom of the third crate with the ends of the boards. Center the middle crate between the other two.

Step 2 Drill five holes per box for hex bolts in an X pattern, *above*. Attach cedar to crates with hex bolts, washers, and nuts. Repeat with three more crates for the unit's other side.

Step 3 Stand each side up vertically. Cut 6-foot cedar into eight 9-inch connectors. Place one remaining crate between outside bottom crates with a 3-inch overlap.

Step 4 Drill holes, then screw 9-inch connectors through the center crate bottom into vertical side pieces of the outside boxes (A). Screw connectors through outside boxes into vertical side pieces of center crate. Repeat for second center crate.

Step 5 Stain all boxes. When dry, cut landscape fabric into eight 30x24-inch rectangles. Line crates with fabric and staple in place. Tip: The technique is like wrapping a gift but on the inside. Fill with potting soil and plants.

GET PACKING To make the most of your vertical garden, load it! Many vertical gardens are too small or sparsely planted to be practical. Here you see cucumbers, purple basil, lavender, chamomile, and celery on top, *this photo*. Next are lemon balm, cucumbers, marigolds, and nasturtium. Below that we planted dill, parsley, thyme, and oregano. Note: The hinges are purely for decoration, elevating the look of the entire unit.

PARTY THYME This vertical garden has a cocktail theme. We used popular drink ingredients for festive appeal. The celery and cucumbers work in a bloody mary; lemon balm adds tart punctuation to your beverages; and edible flowers can be uncommon garnishes. Experiment with herbs like basil and thyme muddled into your creations to set your next cocktail party apart from the ordinary.



MAKE IT

STACKED PILLAR PLANTER

MATERIALS

- Eight 8-foot red cedar decking planks
- Saw
- Bar clamps
- Twelve 8½-inch corner cleats (for vertical interior)
- Drill/driver
- 1½-inch galvanized deck screws
- Outdoor-grade plywood
- 1¾-inch hole saw
- Six 16-inch cleats (for bottom supports)
- Six 14½-inch cleats (for bottom supports)
- Four 1⅝-inch-diameter 6-foot metal line fence posts
- Hacksaw
- Twelve 1⅜-inch line post female hinges
- Twelve ⅝x3-inch galvanized hex bolts
- Twelve ⅝-inch galvanized nuts
- Twelve ⅝-inch galvanized washers
- Twelve 3½x3½-inch interior door satin-nickel hinges

Step 1 Cut cedar decking to lengths in cut list, below. Position two 18-inch and two 16-inch decking pieces to form a nearly square box. Hold together with bar clamps. Place 8½-inch cleat in an interior corner about 2 inches from bottom of the decking pieces, and screw cleat into decking with four 1½-inch screws. Repeat in three other corners.

Step 2 Add a second row of decking, with alternating corners overlapping (A). Screw cleats to decking boards with four 1½-inch screws.

Step 3 Cut four 1¾-inch post holes in plywood bottoms 2 inches in from the corners with a hole saw. Drill four ½-inch holes for hinge support bolts outside of the post holes in the corners. Drill five ¼-inch drainage holes, making a plus-sign pattern in the center.

Step 4 Position plywood bottom so it rests on corner cleats and screw the 16-inch and 14½-inch cleats into place to secure plywood (B). Repeat for two more boxes.

Step 5 Cut fence posts with hacksaw to 60 inches long. Put a post female hinge piece on each post 6 inches from bottom. You may have to use a hammer or mallet to snap them in place.

Step 6 Slide one box onto the posts so it rests atop the hinges and secure with hex bolts, nuts, and washers (C).

Step 7 Place hinge pieces at 28 inches for middle box. Slide box onto posts and secure with hex bolts. Place hinge pieces at 51 inches, slide on top box (D), and secure with hex bolts. Center decorative hinges in each box corner. Fill boxes with potting soil and plant.



CUT LIST

#	PART	USE	SIZE
4	CHAIN LINK FENCE POSTS	POST SUPPORT	60"
12	CEDAR DECKING PLANKS	BOX WALLS	18"
12	CEDAR DECKING PLANKS	BOX WALLS	16"
3	PLYWOOD	BOX BOTTOMS	15⅞x15⅞"
12	1-INCH SQUARE DOWEL	CORNER CLEATS	8½"
6	1-INCH SQUARE DOWEL	BOTTOM CLEATS	14½"
6	1-INCH SQUARE DOWEL	BOTTOM CLEATS	16"

MAKE IT

HANGING HERB BOXES

MATERIALS

- Two 30x8x8-inch teak window boxes
- Drill
- Twelve $\frac{5}{16}$ -inch screw pin shackles
- Twelve $\frac{1}{4}$ -inch quick links
- Four $4\frac{15}{16}$ -inch ceiling hooks
- 20 feet of $\frac{5}{8}$ -inch zinc-coated coil straight chain
- Bolt cutter

Step 1 Drill four $\frac{3}{8}$ -inch holes in both boxes 5 inches from each outside edge and 1 inch from top edge.

Step 2 On the top box, drill four $\frac{3}{8}$ -inch holes 5 inches from each outside edge and 1 inch from bottom edge.

Step 3 On the underside of the top box, drill four 1-inch holes 5 inches in from each outside edge and a half-inch in from the side edge to anchor the shackles.

Step 4 Install screw pin shackles and attach quick links to the shackles. Attach ceiling hooks with 20 inches between the two pairs. (Distance between hooks will depend on your beam but should be no more than 8 inches.)

Step 5 Using a bolt cutter, cut the chain to your desired length; four chains for the ceiling to the top box, four for the top box to the lower box.

Step 6 Hang your first four pieces of chain from the ceiling hooks (A) and attach to the top box's quick links. Hang the second four pieces of chain from the top box's bottom quick links (B) and attach them to the bottom box quick links.

Step 7 Fill with potting soil and plant.



TRUE COLORS This isn't your average basil. Contrasting markings on the leaves add visual interest. Whenever possible, choose variegated herbs for design consideration. Here we have tarragon, golden leaf sage, curly parsley, rosemary, spicy globe basil, blue sage, purple basil, and thyme up top. Below are parsley, lemon balm, purple basil, variegated oregano, sage, and Greek oregano.



WE AFFIXED SHACKLE HOOKS TO THE TOP BOX TO HOLD THE CHAIN FOR THE LOWER BOX. QUICK LINKS PROVIDE A HANDY AND STRONG ATTACHMENT TO MARRY CHAIN AND SHACKLE.

GARDEN VIEW When you don't have dedicated land for traditional gardening—or even if you do and just want to take a different approach—well-designed planter boxes can be as beautiful as they are functional, *opposite*. This hanging version is porch-perfect, giving city dwellers the option to always have fresh herbs on hand.



DO IT BETTER

THE WATERING NEEDS MAY VARY BETWEEN THE TWO BOXES. THE LOWER BOX MAY RECEIVE SOME RUNOFF WATER FROM THE TOP ONE. ALSO, THE AMOUNT OF SUNLIGHT MAY VARY BETWEEN THE TWO BOXES.



R&R

SHE SAID *she shed*

A woman's place is in the shed—especially when she builds it as a tiny getaway in her own backyard.

WORDS **LACEY HOWARD** PHOTOGRAPHS **PETE KRUMHARDT** STYLING **SCOTT J. JOHNSON**



“I GUESS I WAS BORED AND NEEDED A PROJECT,” KAREN ZIMMERMAN, A SELF-DIAGNOSED “TINY HOUSE FREAK,” SAYS OF HER BACKYARD SHED.

“I love decorating and many of the projects in my fixer-upper bungalow were done.” The Altoona, Iowa, resident’s stay-busy attitude landed an 8×14-foot shed in her backyard.

Karen personalized a stock building plan and hired a builder. “I wanted the roof to be more pitched and I wanted an overhang over the front door, like a house,” she says. “I drew up what I wanted and he built it, and we took it from there.”

Once the structure was built, Karen and her husband, Doug, wired the building for electricity and added insulation, then covered the interior with 4×8-foot wood panels that have the look of horizontal shiplap. “I’m fairly impatient to get things done,” Karen says. “I had the back half of the shed painted and pictures hung before my husband finished the walls at the front!”

On the exterior, Karen created a front porch by building a ground-level deck the width of the shed. Inspired by Pinterest, she decided her new shed was already in need of a makeover. “When it was first built it had regular siding on it. I loved the look of shake shingles and knew it needed to be changed.” The couple used real cedar shake, stapling each one in place. “I was told it wouldn’t take long, but let’s just say I was misinformed,” Karen says with a laugh. “I’d say it took about a week, and then I had to paint a sealer on top. That may not seem long, but to me it was an eternity!”

A half-light door painted teal blue is the finishing touch to Karen’s vision. “Adding the walkway and the deck makes it look like a cottage,” she says. “And the view of it from our main house is great. I appreciate my shed as much for the yard art it provides as the interior itself.”

KAREN BOUGHT OLD CORRUGATED TIN ON FACEBOOK MARKETPLACE. SHE USED IT ON THE UNDERSIDE OF THE PORTICO AND IN THE GARDEN CLOSET AT THE REAR OF THE SHED.



TINY HOUSE LOVE Karen and Doug Zimmerman (above left) built a shed in their Iowa backyard. Karen—inspired by Pinterest and her love of projects—dressed the shed with classic cottage details, including real cedar shakes, a teal front door, window boxes, a mailbox, and a front porch with seating and plants.



GUEST SPACE A loft that extends above the 2×8-foot outdoor-access closet at the back of the shed offers bonus sleeping space when needed, *this photo*. Karen carpeted the loft and adds a twin camper-style mattress for sleeping. Guests reach the space via a vintage ladder (not pictured).



SHIPLAP-LOOK WALL PANELS COME IN 4x8-FOOT SHEETS FOR EASY INSTALLATION. KAREN PAINTED THE WALLS SHERWIN-WILLIAMS DORIAN GRAY (SW 7017).

GATHERING PLACE “The furnishings are a collection of things,” Karen says of her shed’s interior, *above and opposite*. “I had the daybed. I bought the little table and painted it white. My husband got the locker, which I use to store crafts supplies, from a friend.” Windows offer a cross breeze.

DO IT BETTER

DECORATE WITH AN EYE FOR COMFORT TO BOOST ENJOYMENT OF YOUR PRIVATE SPACE. KAREN INCLUDED A TV WITH DVD PLAYER MOUNTED OVER THE DOOR—EASILY SEEN FROM THE DAYBED. SHE ALSO SURROUNDED HERSELF WITH PHOTOS OF HER “FAVORITE PEOPLE—FAMILY AND GOOD GIRLFRIENDS.”



WELCOME MAT Hooks and a bench just inside the door create a drop zone for shoes and coats. Karen uses the shed as her own personal getaway in which to relax alone or with friends. “It’s a great place to take a nap, work on crafts, or drink wine and watch movies with friends,” she says.

PEGBBOARD
ALLOWS YOU
TO CUSTOMIZE
STORAGE SPACES—
EVEN BACKS OF
DOORS—WITH
EASILY MOVABLE
HOOKS AND
SHELVES.



BUILT-IN STORAGE

"I use the storage closet at the back of the shed for gardening tools and outdoor decorations. It's nice to have a separate space for these things," Karen says of the pegboard-lined 2x8-foot closet. The back wall of the closet is shared with the interior of her cozy shed—it's the wall with the daybed. The ceiling of the closet is the underside of part of the sleeping loft.

FOR RESOURCES
SEE PAGE 101.

SHARED SHED BASICS

Homeowner Karen Zimmerman has advice about building your own shed, whether as an escape for finding R&R or for down-and-dirty storage.

GATHER IDEAS "I recently joined a Facebook group called She Shed Sisters. It is fun to communicate with people all over the world who have similar interests," Karen says. "This group, along with Pinterest, has great ideas."

CHECK THE RULES "When adding anything to your property, consult your city to find out what they will allow," Karen says. Her shed

meets the maximum square footage her city would allow without a permit.

BUDGET FOR BUILDING, THEN SOME "I would say the shed build was about \$2,600 and with other materials I probably have \$4,000 into it," Karen says of her finished shed. Of course, prices vary by location. But doing it yourself always saves on labor costs. Be sure

to account for materials such as insulation, wallcovering, and paint, as well as upgrades like the front door and other accessories.

DO OVER "If I had it to do over again, I would add water," Karen says of the one thing her shed is missing. A bathroom and kitchenette would turn this she shed into the ultimate hard-to-leave retreat.

RESOURCES

SHOPPING GUIDE

Here's where to find building materials, furnishings, and accessories shown in *Do It Yourself*™ magazine. We cannot guarantee the availability of items or services.

[P] Paint Color Because of the magazine printing process, paint colors depicted on our pages might vary slightly from manufacturers' colors. Use paint color names or numbers, when provided, as a starting point. To get a color as it appears in the magazine, take the page to a paint retailer for matching.

[T] To the Trade Contact a design professional to find more information about this product or service.

ON THE COVER

Table base Finnvard, **tabletop** Linnmon—IKEA; ikea.com. **Basket with handles** similar available as Round Handwoven Wicker Basket by Wholestory—Amazon; amazon.com. **Chair** vintage, similar available as Iseminger by Orren Ellis—Wayfair; 877/929-3247; wayfair.com.

TRY IT: RESIN

PAGES 6–13
THROUGHOUT

Casting resins used in these projects:

System 3 Mirror Cast by System Three Resins; 800/333-5514; systemthree.com.

Famowood by Glaze Coat; 800/767-4667; info@eclecticproducts.com; glazecoat.com.

ArtResin; 877/401-4001; artresin.com.

PAGES 6–9

Wood napkin ring similar available as Geometric Wood Napkin Rings, sold in set of four, **striped woven pillow**, **woven wall hanging** similar available as White Macrame Wall Hanging, **felt ball garland** Multicolor Felt Garland—World Market; 877/967-5362; worldmarket.com. **Linen duvet**—Target Stores; 800/800-8800; target.com. **Nightstand**, **task lamp**, **turquoise pillow**—HomeGoods; 800/888-0776; homegoods.com for a location near you.

PAGES 10–11

Wall paint Secure Blue SW 6508—The Sherwin-Williams Co.; 800/474-3794; sherwin-williams.com [P]. **Decoupage medium for photography** ModPodge—Plaid; 800/842-4197; plaidonline.com. **Succulent photograph on cardstock for project** by Park Lane Paperie, **black letter board with white letters**—Jo-Ann Stores; joann.com. **Bamboo chair**—World Market; 877/967-5362; worldmarket.com. **Black-and-white pillow**—Target Stores; 800/800-8800; target.com. **Rug**—HomeGoods; 800/888-0776; homegoods.com for a location near you.

PAGES 12–13

Square- and diamond-shape silicone resin molds for projects from the DIY Silicone Resin Casting Molds and Tools set by EuTengHao, **hexagonal silicone mold for small tray** from the Resin Casting Silicone Art Molds set by West Bay, **dried flowers for cube projects** by Aunifun—Amazon; amazon.com. **Wood desk organizer for project**, **shelf**, **black fish framed artwork**—HomeGoods; 800/888-0776; homegoods.com for a location near you. **Lamp** Fillable Glass Accent Lamp in clear, **lampshade** Gold Lined Lampshade in black, both from the Threshold collection—Target Stores; 800/800-8800; target.com.

WHAT TO DO WITH: CORDS & STRAPS

PAGES 22–29

PAGES 22–23

Wall paint Cay SW 6772—The Sherwin-Williams Co.; 800/474-3794; sherwin-williams.com [P]. **Cord for wall art** ¼-inch Para-Max cord in teal, black, and green, **cord for console project** ⅛-inch Shock cord with reflective tracers—Paracord Planet; paracordplanet.com. **White ceramic knobs** White Ceramic Knob AQ-18wht from the Basics collection by Amerock—D. Lawless Hardware; dlawlesshardware.com. **Brass-plated nails**—Menards; for locations throughout the Midwest, visit menards.com. **Clear plastic ¼-inch cable clamps**—Lowe's;

lowes.com. **Turquoise-color beads**, **silver-color spacers**—Michaels Stores, Inc.; michaels.com. **Console** Chew Stoke—All Modern; 844/871-6431; allmodern.com. **Rug** Zags denim—Dash & Albert, an Annie Selke company; 877/586-4771; annieselke.com. **Headphones** Been There Bluetooth by Jam—Amazon; amazon.com. **Framed microphone artwork**—Getty Images; gettyimages.com. **Frame** Black Float Frame from the Better Homes & Gardens Collection®—Walmart Stores, Inc.; walmart.com.

PAGES 24–25

Wall paint Greening SW 6448—The Sherwin-Williams Co.; 800/474-3794; sherwin-williams.com [P]. **Cord for projects** 5 mm paracord in White, Urban Camo, and Solid Orange—Paracord Planet; paracordplanet.com. **Wall pegs** Hob Knob, **orange stapler** Poppin—The Container Store; 888/266-8246; containerstore.com. **Orange chair** Dedrick—Wayfair; 877/929-3247; wayfair.com. **Desk** Flynn midcentury modern desk from the Better Homes & Gardens Collection®—Walmart Stores, Inc.; walmart.com. **Rug** Jamie—Surya; 877/275-7847; surya.com. **Tote** Ava in Tobacco—Annie Selke; 877/586-4771; annieselke.com. **Green storage box** from the Hearth & Hand collection, **clock**, **lidded jar candle**, **faux plant in cement pot**—Target Stores; 800/800-8800; target.com.

PAGES 26–27

Cord for projects 4 mm 550 Diamonds paracord in Rose Pink/Fuchsia, Cream/International Orange, Kelly Green/Cream, Baby Blue/Midnight Blue, Acid Purple/Cream, Turquoise/Teal, Lavender/Neon Turquoise—Paracord Planet; paracordplanet.com. **Table** Roundabout in White—Hide+Seek Supply Co.; hideandseeksupplyco.com. **Vintage aluminum lawn chair**—Etsy; etsy.com, search: folding aluminum lawn chair. **Blanket** Beach and Picnic Blanket in Blue Bell by Roebury—Amazon; amazon.com. **Lampshade** Black Metal Flare by

Ashland—Michaels Stores, Inc.; *michaels.com*. **Nylon electrical cord set**—West Elm; 866/428-6468; *westelm.com*. **Webbing** 1-inch Flat Nylon Webbing in Silver Gray—Strapworks; *strapworks.com*.

PAGE 28

Webbing for bookcase project 1½-inch Flat Nylon Webbing in Raspberry and Purple, 1-inch Flat Nylon Webbing in Olive Drab, 3-inch Heavyweight Polypropylene in White—Strapworks; *strapworks.com*. **Bookcase** Evonna—All Modern; 844/871-6431; *allmodern.com*. **Rug** Antigua—Surya; 877/275-7847; *surya.com*. **Gray raffia basket, white serving tray**—The Container Store; 888/266-8246; *containerstore.com*. **Green velvet chair, small potted cacti in window**—World Market; 877/967-5362; *worldmarket.com*. **Small vases on top shelf, cactus planter, pink tote**—Target Stores; 800/800-8800; *target.com*.

ORDER IN THE HOUSE: SLEEK SYSTEM

PAGES 30–33

Professional organization: Samantha Pregoner, SO Home/Simply Organized, P.O. Box 916, Alamo, CA 94507; *simplyorganized.me*.

Wall-mounted ventilated shelving, mesh drawers, mesh drawer divider inserts, side-mounted shelf hooks, utility track with bike brackets, shelf labels, drawer labels, rolling mesh carts, clear plastic storage bin with handles, medium and large hanging baskets Intermetro shelf baskets, lidded storage boxes, weathertight plastic storage bins Iris, boot trays, woven storage bins with handles Loft, **bulletin board** U-Brands Natural Square Bulletin Board, **woven strapping basket** in Slate Blue and White—The Container Store; 888/266-8246; *containerstore.com*. **Gray striped rug** Perma Tuft Tonal Stripe Rug from the Maples washable rugs collection—Target Stores; 800/800-8800; *target.com*. **White wall hook**—Ace Hardware; 866/290-5334; *acehardware.com*. **Counter stool** Weldon in teal, **cushion for bench** Natural Bench Cushion—Pier 1 Imports; 800/245-4595; *pier1.com*. **Red table and chairs** Mammot—IKEA; *ikea-usa.com*. **Scooter stand** by ScooterPort—Amazon; *amazon.com*.

SEW EASY: TABLE LINENS

PAGES 44–46

Blue circle fabric Aria in Aqua Caviar by Kelly Ventura for Windham Fabric, **floral fabric with blue background** similar available—Lily Rose Quilts; *lilyrosequilts.etsy.com*. **Oilcloth**—Ben Franklin; *benfranklinonline.com*. **Trim** similar available as unbleached cotton tassel fringe—Kraam by Siri; *kraambysiri.etsy.com*. **Round plates** Collins Porcelain Salad Plate from the Better Homes & Gardens Collection®—Walmart Stores, Inc.; *walmart.com*. **Napkins**—

HomeGoods; 800/888-0776; *homegoods.com* for a location near you.

MOVING UP

PAGES 48–57

Visit Michelle Adams' lifestyle blog, The Maryn; *themaryn.com*.

Design: Michelle Adams, Adams Creative Studio; *adamscreativestudio.com*.

General contracting: William Charles, William Charles Custom Homes, Saline, Michigan; 734/429-2605; *facebook.com*, search: William Charles Custom Homes.

Landscaping: K&P Landscaping, Saline, Michigan; 734/717-7871; *kplsolutions.com*. **THROUGHOUT**

Wall paint Tibetan Jasmine RL 1007—Ralph Lauren Home; *ralphlaurenhome.com* [P].

PAGES 48–49

Outdoor wire chairs Modern—Rejuvenation; 888/401-1900; *rejuvenation.com*. **Firepit**—

Stahl Firepit; *stahlfirepit.com*. **Table base in shed** Finnvard, **tabletop** Linnmon—IKEA;

ikea.com. **Basket with handles** similar available as Round Handwoven Wicker Basket by Wholestory—Amazon; *amazon.com*. **Chair** vintage, similar available as Iseminger by Orren Ellis—Wayfair; 877/929-3247; *wayfair.com*. **PAGES 50–51**

Light fixtures 3 Arm Ceiling Lamp—Apartment Therapy Marketplace; *marketplace.apartmenttherapy.com*. **Hurricane**—Ralph Lauren Home; *ralphlaurenhome.com*. **Small shaded lamp on mantel** Terri Round Accent Lamp—Circa Lighting; *circalighting.com*.

Sofa Miramar in Cloud, **chairs** Lowell Wingback—Serena & Lily; *serenaandlily.com*.

Large yellow-striped pillows Marigold—Heather Taylor Home; *heathertaylorhome.com*. **White pillow with dark stripes** Santiago

Atitlan I—Archive New York; *archivenewyork.com*. **Indigo pillows on chairs** Kampala—D. Bryant Archie; *dbryantarchie.com*. **End table**

at sofa Noguchi Prismatic in white—Design Within Reach; *dwr.com*. **Rug** Baxter in gray wool—Crate & Barrel; *crateandbarrel.com*.

Coffee table Desi—Katy Skelton; *katyskelton.com*. **Vase on table** Cylinder—Studio Yaara; *studioyaara.co.il*. **Throw in basket** Maryn

Stripe with fringe—Tensira; *tensira.com*. **Throw on chair** Yucatan Pink Throw—

Caroline Z Hurley; *carolinezhurley.com*. **Side table flanked by chairs** Chrome Oval, **white lamp** Lisbon—Flair; *flairhomecollection.com*.

Mirror at entry antique—Les Puces de Saint-Ouen Flea Market; *marcheauxpuces-saintouen.com*.

PAGES 52–53

Sink faucet similar available as Rowe Edwardian—Rohl; 800/777-9762; *rohlhome.com*. **Range**—Thermador; 800/735-4328; *thermador.com*. **Light fixture** Robert Ogden

Pendant—John Derian Co. Inc.; *johnderian.com*. **Butcher-block cutting board** similar

available—John Boos Butcher Block Co.; 877/845-5597; *butcherblockco.com*. **Framed fig artwork** *Fig Tree* by Hugo Guinness—John

Derian; *johnderian.com*. **Framed ocean waves artwork at far right** *Smooth Sailing* by Brynn

Weiermiller Casey—Artfully Walls; *artfullywalls.com*. **Rug runner** Charcoal Striped Runner—

Far + Wide Collective; *farandwidecollective.com*. **Wall paint at breakfast nook**

Silversmith RL 1114—Ralph Lauren Home; *ralphlaurenhome.com* [P]. **Drapery** Belgian

Textured Linen Drapery in white—Restoration Hardware; *rh.com*. **Table** Docksta—IKEA;

ikea.com. **Chairs** Saddle Leather Dining Chair—Garza Marfa; *marfa.myshopify.com*.

Serving bowl—March; *marchsf.com*. **Small bowl**—Studio Yaara; *studioyaara.co.il*.

PAGES 54–55

Front pillow in basket Santiago Atitlan I—Archive New York; *archivenewyork.com*.

Framed dog artwork similar available—Dwella Mahoney Art; *dwellamahoneyart.etsy.com*.

Decanter, gray dining chairs—Original Roundtop Antiques Fair;

roundtopexasantiques.com. **Lamp** Giacometti-style Gesso lamp—RT Facts;

rtfacts.com. **Basket** Braided Hyacinth Basket—Wayfair; 877/929-3247; *wayfair.com*. **Owl**

print on center shelf Owl by Karyn Lyons—Artfully Walls; *artfullywalls.com*. **Small**

square print in stand—Artifact Uprising; *artifactuprising.com*. **Chairs** Asymmetric

Low Back Dining Chair by Mark Grattan, Jr.—CustomMade, *custommade.com/by/markgrattan/*. **Dining table**—1stDibs;

1stdibs.com. **Black chair** Fronzini '64 Sedie—Cappellini; *cappellini.it*. **Rug**—Cost-Plus

World Market; *worldmarket.com*. **Drapery** Belgian Textured Linen in white—Restoration

Hardware; *rh.com*. **Black cabinet**—Crate & Barrel; *crateandbarrel.com*. **Pendant light** The

Double Arm Pendant by Nickey Kehoe—The Urban Electric Co.; *urbanelectric.com*.

PAGES 56–57

Chairs, table lamp—Original Round Top Antiques Fair; *roundtopexasantiques.com*.

Black desk—Calvin Klein; *calvinklein.com/home*. **Cork for wall**—Amazon; *amazon.com*.

Lamp Giacometti-style Gesso lamp—RT Facts; *rtfacts.com*. **Painting** vintage—

homeowner's collection. **Wallcovering at bed** Acacia Grass in Ebony—Ralph Lauren

Home; *ralphlaurenhome.com*. **Drapery** Belgian Textured Linen in white—Restoration

Hardware; *rh.com*. **Bed** Savasana—ABC Carpet & Home; *abchome.com*.

OH, HELLO YELLOW

PAGES 58–65

Front door paint Kingdom Gold SW 6698—The Sherwin-Williams Co.; 800/474-3794; *sherwin-williams.com* [P]. **Ceiling light**

Hawthorne One-Light Hanging Lantern in black by Progress Lighting—The Home Depot;

homedepot.com. **Wicker pendant cover**

Vincente Seagrass Teardrop—World Market; 877/967-5362; *worldmarket.com*. **Round lights flanking door** Portfolio Outdoor Wall Light in black, **mailbox** Townhouse Black Wall Mount Mailbox—Lowe's; *lowes.com*. **Flowerpot** wall-mount ring by Useful, **house numbers for planter box** brushed stainless steel by ECShop, **window film application kit** by Gila—Amazon; *amazon.com*. **Blue planter** Bishop Pedestal in Midnight—West Elm; 866/428-6468; *westelm.com*. **Gray concrete planter, small terra-cotta cylinder pot**—Hobby Lobby; *hobbylobby.com*. **White ribbed planter** Geared in white from the Project 62 collection—Target Stores; 800/800-8800; *target.com*. **Window film** Stripes—Brewster Wallcovering; 800/366-1700; *brewsterwallcovering.com*.

SHELF LIFE

PAGES 66–71

THROUGHOUT

Books—Chronicle Books; *chroniclebooks.com*.

PAGES 66–67

Flooring Historic Oak in Ash laminate 22100—Mannington; 800/482-9527; *mannington*

.com. **Library bookends on spool shelf** Economy Steel Book Supports—Demco;

demco.com. **Chair** Vance in Rose—Room & Board; 800/301-9720; *roomandboard.com*.

Chair pillow, planter—Anthropologie; 800/309-2500; *anthropologie.com*. **Plant**—Art Terrarium; *artterrarium.com*.

PAGES 68–69

Wall paint Peach Fuzz SW 6344—The Sherwin-Williams Co.; 800/474-3794; *sherwin-williams*

.com [P]. **Flooring** Historic Oak in Ash laminate 22100—Mannington; 800/482-9527;

mannington.com. **Chair** Glen Swivel Rocker in Tepic Cement—Room & Board; 800/301-

9720; *roomandboard.com*. **Rug** Hazy Lattice, **plate on shelf, vase**—West Elm; 866/428-

6468; *westelm.com*. **Pillow, throw, nesting animals on shelf**—Anthropologie; 800/309-

2500; *anthropologie.com*. **Framed artwork**—Minted; *minted.com*. **Paint for hairpin**

legs Cobalt—Rust-Oleum; 877/385-8155; *rustoleum.com*. **Hairpin legs**—DIY Hairpin

Legs; *diyhairpinlegs.com*. **Cube shelf storage** Three-Cube Organizer Shelf from the Room

Essentials collection—Target Stores; 800/800-8800; *target.com*. **Wallpaper lining book table**

Darcy—Lulie Wallace; *luliewallace.com*.

PAGE 70

Desk—Room & Board; 800/301-9720; *roomandboard.com*. **Calendar, planter,**

organizer, rubber band ball—Target Stores; 800/800-8800; *target.com*.

PAGE 71

Pillow, plant containers—West Elm; 866/428-6468; *westelm.com*. **Plants**—Art Terrarium;

artterrarium.com.

MADE IN THE SHADE

PAGES 72–79

PAGES 72–73

Golden lanterns, blue lanterns—Terrain; 877/583-7724; *shopterrain.com*. **White and**

blue-flowered lanterns—Party City; *partycity.com*. **White-striped blue pillow**—Annie Selke;

877/586-4771; *annieselke.com*. **Red-tasseled throw, long blue pillow with multicolor**

stripes, blue floor cushion with white chevrons—HomeGoods; 800/888-0776;

homegoods.com for a location near you.

Large solid blue pillow—Serena & Lily;

serenaandlily.com. **Blue pillow with tie-dye ends**—Target Stores; 800/800-8800; *target*

.com. **Cushion fabric**—Duralee; 800/275-3872; *duralee.com* [T].

PAGES 76–77

Cushion fabric—Duralee; 800/275-3872;

duralee.com [T]. **Ribbed, galvanized planter**—Terrain; 877/583-7724; *shopterrain.com*.

Small gray pillow with one stripe, white beaded pillow—Pottery Barn; 800/922-5507;

potterybarn.com. **Large blue patterned pillows with fringe**—HomeGoods; 800/888-0776;

homegoods.com for a location near you.

PAGES 78–79

Seat cushion fabric—Duralee; 800/275-3872; *duralee.com* [T]. **Serving cart**—IKEA; *ikea-usa*

.com. **Fabric for flamingo pillows**—Jo-Ann Stores; *joann.com*. **Blue parrot pillow**—

Grandin Road; 866/668-5962; *grandinroad.com*. **Flamingos**—Flowerama; *flowerama*

.com. **Solid pink pillow with fringe**—

HomeGoods; 800/888-0776; *homegoods.com* for a location near you. **Large solid blue**

pillow—Serena & Lily; *serenaandlily.com*.

Pink-and-white patterned pillows, pink throw—Annie Selke; 877/586-4771; *annieselke*

.com. **Drink pitcher, colored ice cubes**—World Market; 877/967-5362; *worldmarket.com*.

HOME SWEET HOMEMADE

PAGES 80–89

PAGES 80–85

Cabinet knobs Allison—Amerock Corp.;

800/618-9559; *amerock.com*. **Knob stain**

Aged Leather Oil by Cabot—Lowe's; *lowes*

.com. **Faucet** similar available as Bolden—Kräus USA; 800/775-0703; *kraususa.com*. **Pendant**

light collection at table Lazy Susan Wire

Pendants—Wayfair; 877/929-3247; *wayfair*

.com. **Wall paint** Standard White—Kelly-Moore Paint Co., Inc.; 888/562-6567; *kellymoore*

.com [P]. **Flooring** Timberline in Lumberjack Hickory laminate—Shaw Industries; 800/441-

7429; *shawfloors.com*. **White chairs** Baxton Azzo by Baxton Studio—Walmart Stores, Inc.;

walmart.com.

PAGES 86–87

Girls' bedding from the Chic White

collection—Beddy's; *beddys.com*. **Back entry door paint** Delicate Frost 6003-9A—Valspar;

valspar.com. **Ceiling pendant in girls' room**

1100 Industrial Pendant by Trans Globe

Lighting—Lighting Direct; 800/375-3410; *lightingdirect.com*.

PAGES 88–89

Ceiling light 1100 Industrial Pendant by Trans

Globe Lighting—Lighting Direct; 800/375-3410; *lightingdirect.com*.

BOX SPRINGS

PAGES 90–95

PAGES 90–91

Brown chair similar available as Dilan Safari

Chair—Safavieh; *safavieh.com*. **Pillow fabric**

similar available as Harbor View—Ralph Lauren Home; 888/475-7674; *ralphlaurenhome.com*.

Planter by chair Concrete Fluted—Pottery Barn; 800/922-5507; *potterybarn.com*.

PAGE 95

Navy blue chair on porch similar available as Fort Walton—Target Stores; 800/800-8800;

target.com. **Fabric for ikat pillow** similar available as Adras—The Pattern Collective;

patterncollective.com.

SHE SAID, SHE SHED

PAGES 96–100

Shed—Gold Dome Buildings, Des Moines; 515/243-8554; *golddomebuildiowa.com*.

Hydrangeas Endless Summer—Bailey

Nurseries; for a local retailer, visit

baileynurseries.com. **Gray planters by shed door**—White Flower Farm; 800/503-9624;

whiteflowerfarm.com.

PROJECTS UNDER \$20

Resin napkin ring **7**

Resin coasters **9**

Resin-cast knobs **10**

Embellished tabletop **10**

Resin photo display **12**

Embroidered jeans **16**

Cord wall treatment **22**

Cord console embellishment **23**

Corded shelves **24**

Cord chair embellishment **24**

Woven outdoor chair **26**

Woven shelf embellishment **28**

Oilcloth place mat **45**

Oilcloth runner **45**

Spray-painted doormat **58**

Door window film **65**

Plywood shelves **70**

DIY crate **83**

Branch window treatment **86**

Clipboard organizers **89**

1. This sophisticated print takes inspiration from the terrazzo trend. Terrazzo Woman Art Print, starting at \$19; society6.com/staydomio

2. These speckled beauties offer an instant update to a backsplash. Terrazzo Ceramic Tile, \$14 per 4¼x4¼-inch tile; zazzle.com



3. Stay warm and stay on trend by cuddling up in this graphic throw. The sherpa fleece backing is super cozy and a great addition of texture. Terrazzo Pattern Throw Blanket, \$60 for 51x60-inch size; society6.com

1



2



4. Pamper your pet with dapper dishes. These ceramic food and water bowls are available in two sizes. Terrazzo Print Ceramic Dog Bowls, \$26; shouldwego.etsy.com

5. Add appeal to white walls with peel-and-stick terrazzo-pattern wallpaper. Terrazzo Repositionable Removable Wallpaper, \$42 for 23.5x60 inches; ifyourwallswouldtalk.etsy.com

6. Want to try terrazzo but not sure you're ready to totally commit? This collection of vinyl stickers will dress up an accent wall in minutes. Wall Decal Muted Terrazzo Wall Stickers, \$59 per roll; thelovelywall.etsy.com



TREND SITING

TERRAZZO

The terrazzo look is flecked with cosmopolitan character. These pieces combine hues to add worldly sophistication to any space.

WORDS **RACHEL O'BRIEN**
PHOTOGRAPHS **JASON DONNELLY**





When you need it done right, do it with DR®.



The ORIGINAL Trimmer on Wheels!



Trim and Mow the EASY Way with a DR® Trimmer Mower!

GAS...



...and BATTERY!



5X THE POWER of a hand-held trimmer without the backstrain!

THICKEST, LONGEST-LASTING cord (up to 255 mil) takes seconds to change!

10 MODELS including Self-Propelled, Tow-Behind (for ATV) and PTO!

DRtrimmers.com

TADAAA © 2020

World's Most Powerful Leaf Vacuum!



Perfect for SPRING CLEAN-UP!

Tow-Behind

- Rated #1 in vacuum power!
- Huge capacity.
- Stores flat in minutes.
- Easy, one-handed dumping.



Walk-Behind

- Easy on/off collector bags hold up to 8 bushels!
- Perfect for landscaped areas & smaller properties.
- Self-propelled model is available.



NEWLY REDESIGNED with More Power and Capacity!

DRleafmachines.com

TADAAAB © 2020

Yard Cleanup is EASY with a DR® CHIPPER SHREDDER!



Three models to choose from!



Towable and PTO models too!

CHIP branches up to 5" in diameter. SHRED yard & garden waste up to 1.5" thick. POWERFUL ENGINES spin massive flywheels and shredding hammers to reduce everything FAST.

DRchipper.com

TADAAAC © 2020

FREE SHIPPING | **6 MONTH TRIAL** | **EASY FINANCING**

SOME LIMITATIONS APPLY. GO ONLINE OR CALL FOR DETAILS.

*Assembled in the USA using domestic and foreign parts.

Go Online or Call for FREE Info Kit!

Includes product specifications and factory-direct offers.

TOLL FREE **888-212-8855**